

**Figure 6**  
Inside Configuration of the EUT



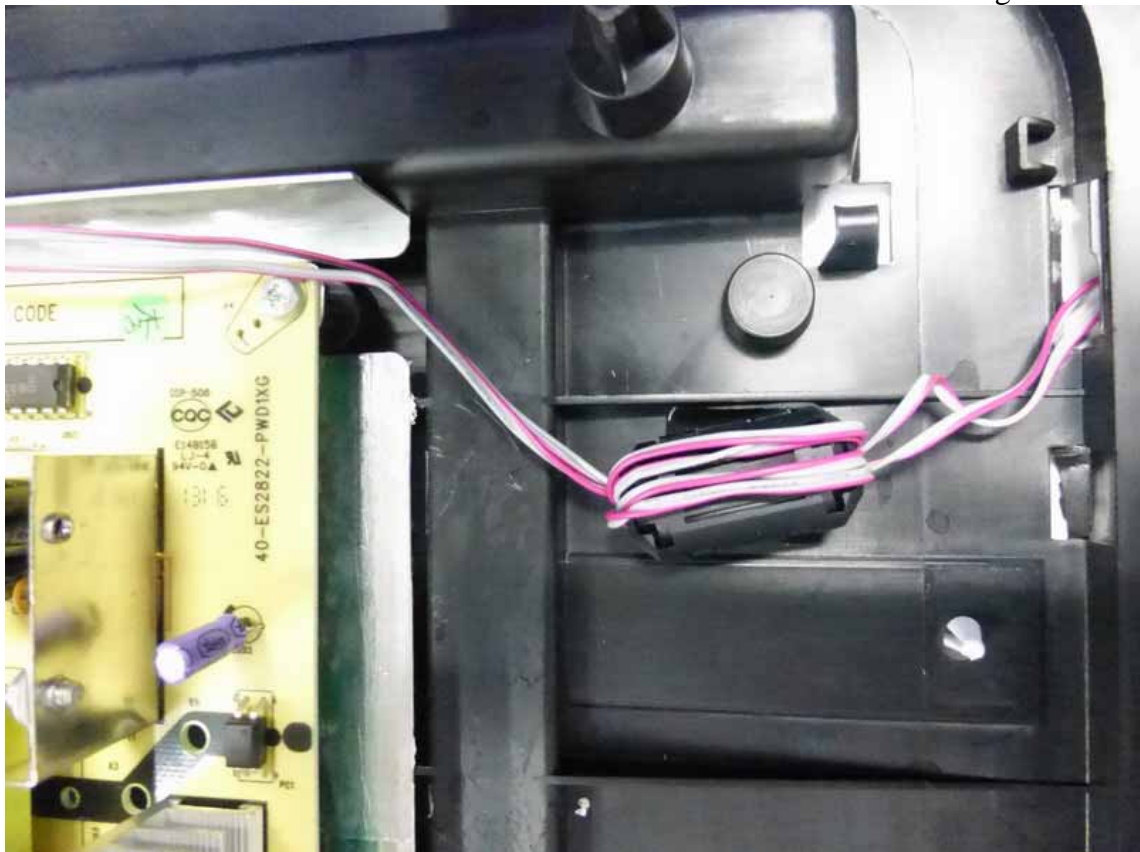
**Figure 7**  
Inside Configuration of the EUT



**Figure 8**  
Inside Configuration of the EUT



**Figure 9**  
Inside Configuration of the EUT



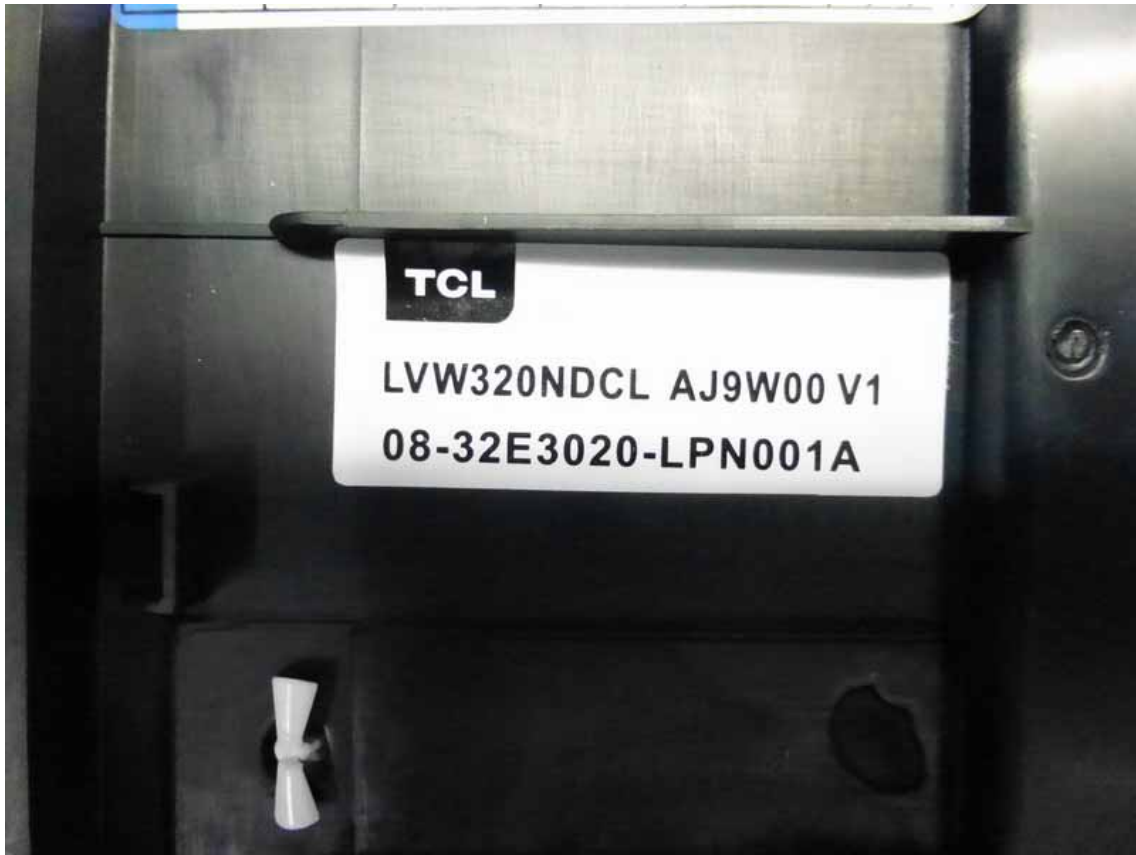
**Figure 10**  
Frontside of the LCD Panel



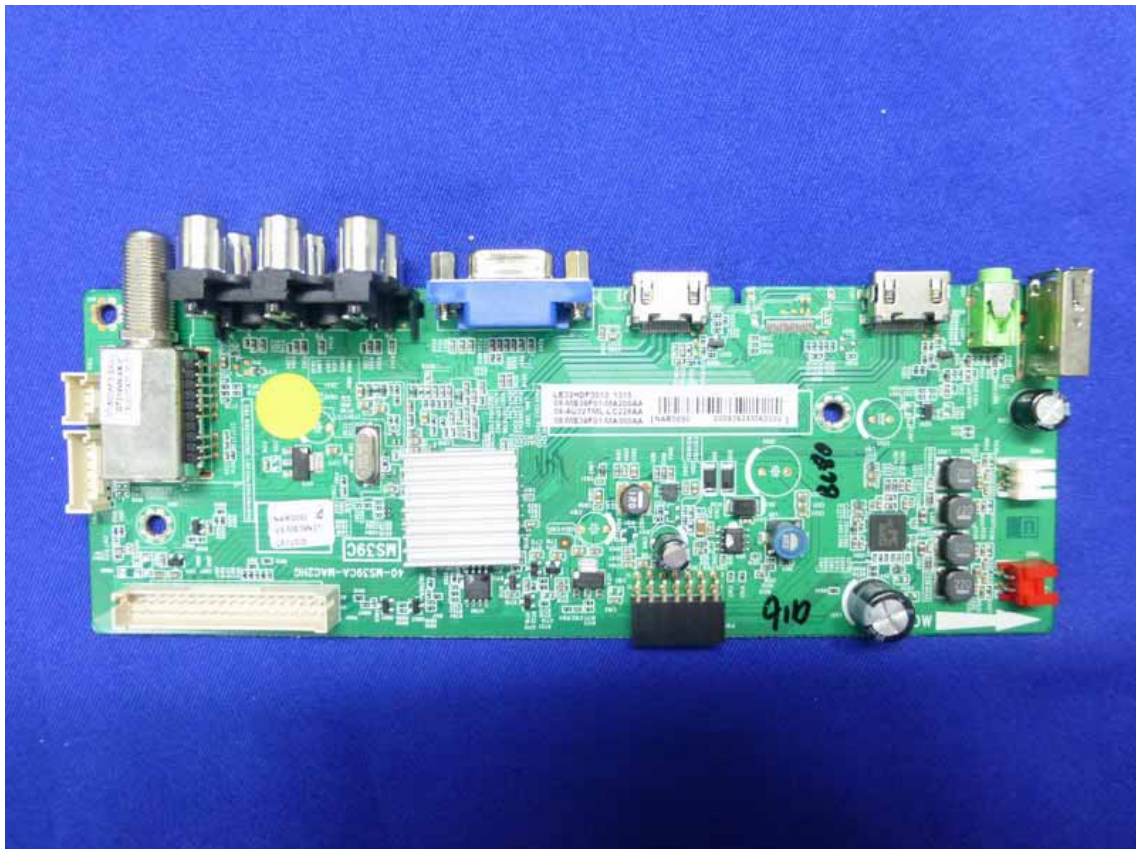
**Figure 11**  
Backside of the LCD Panel



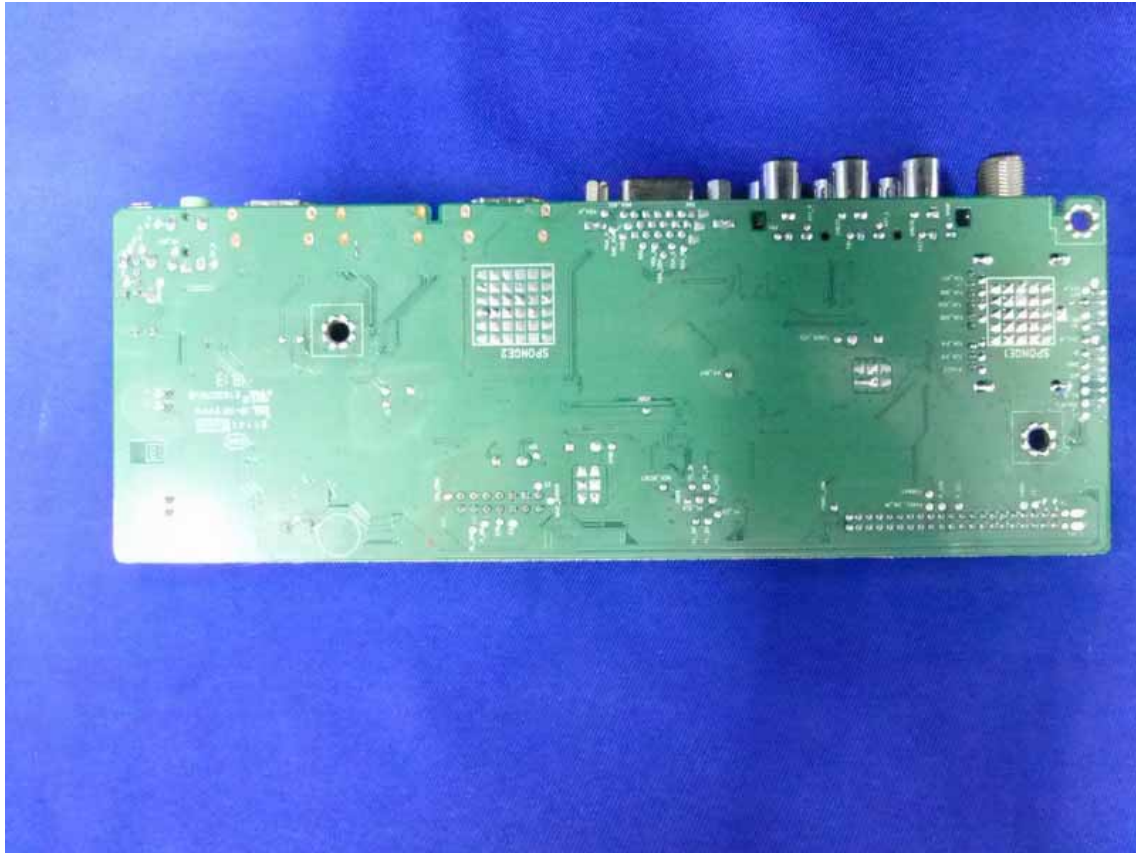
**Figure 12**  
Label of the LCD Panel



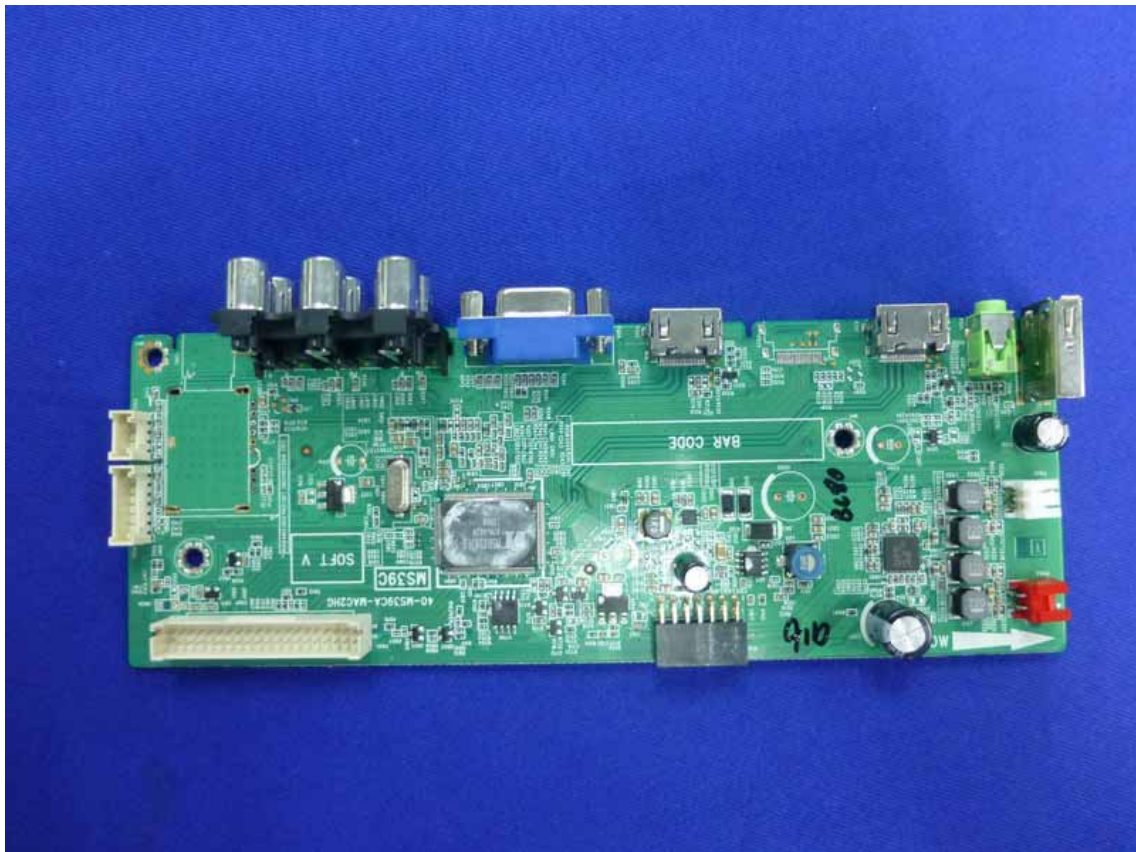
**Figure 13**  
Frontside of the Main Board



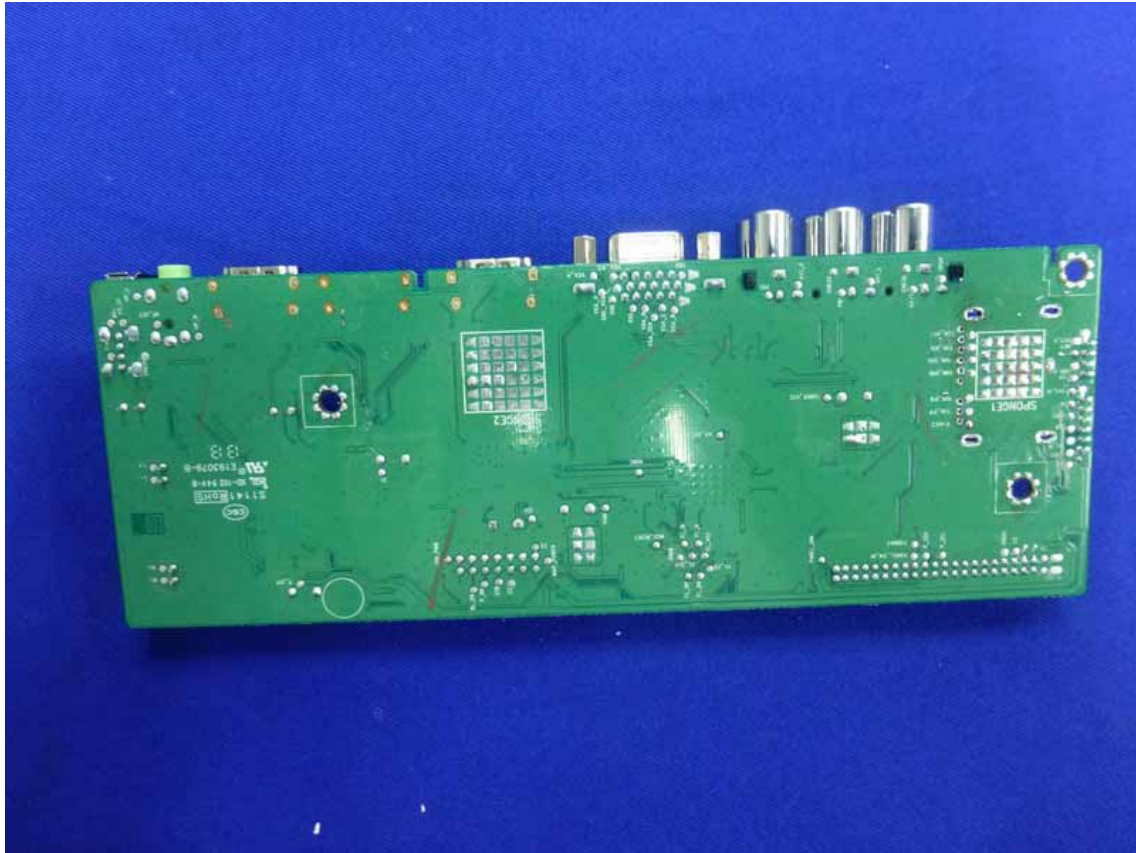
**Figure 14**  
Backside of the Main Board



**Figure 15**  
Frontside of the Main Board



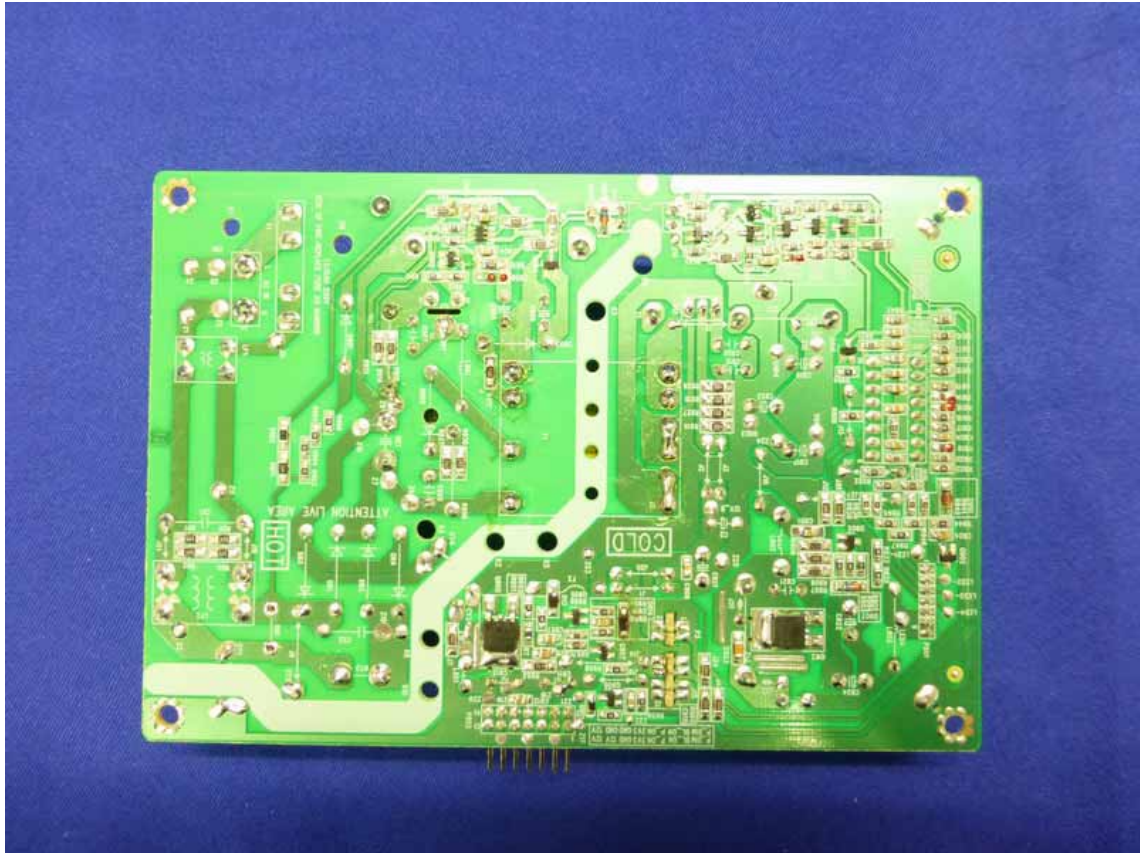
**Figure 16**  
Backside of the Main Board



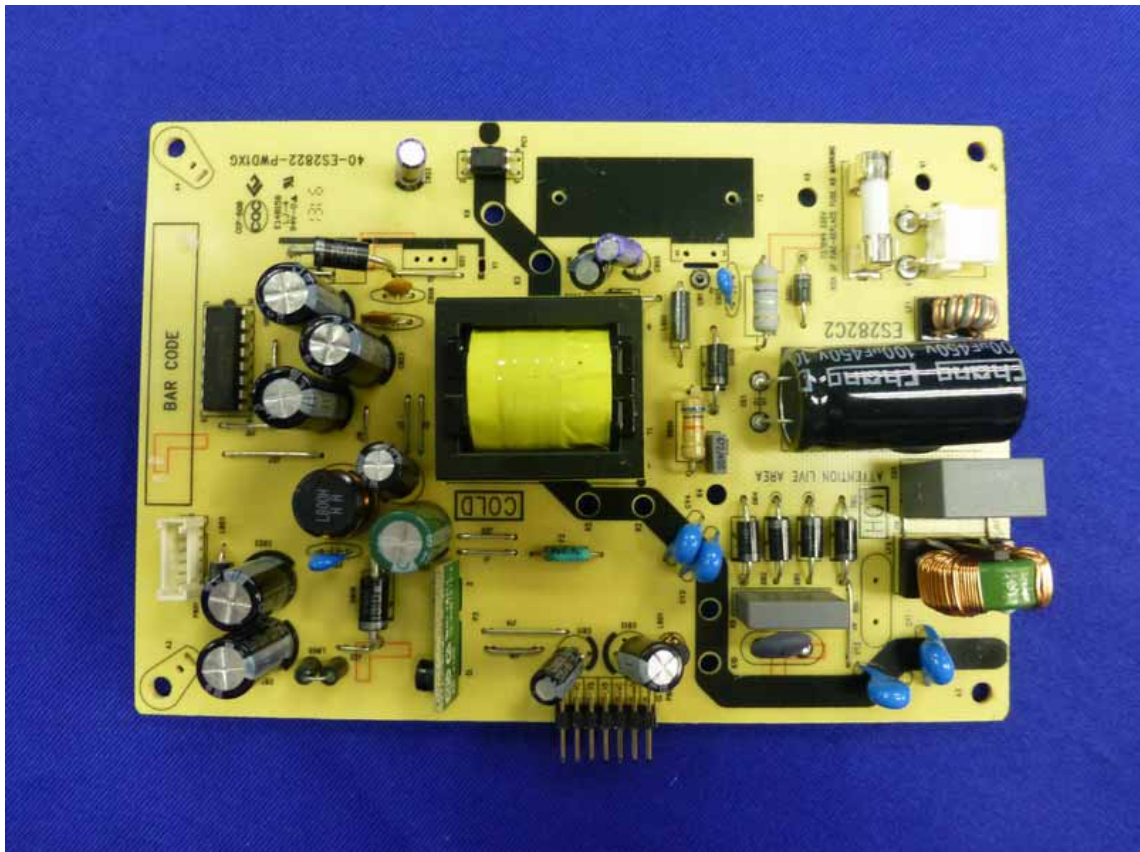
**Figure 17**  
Frontside of the Power Board



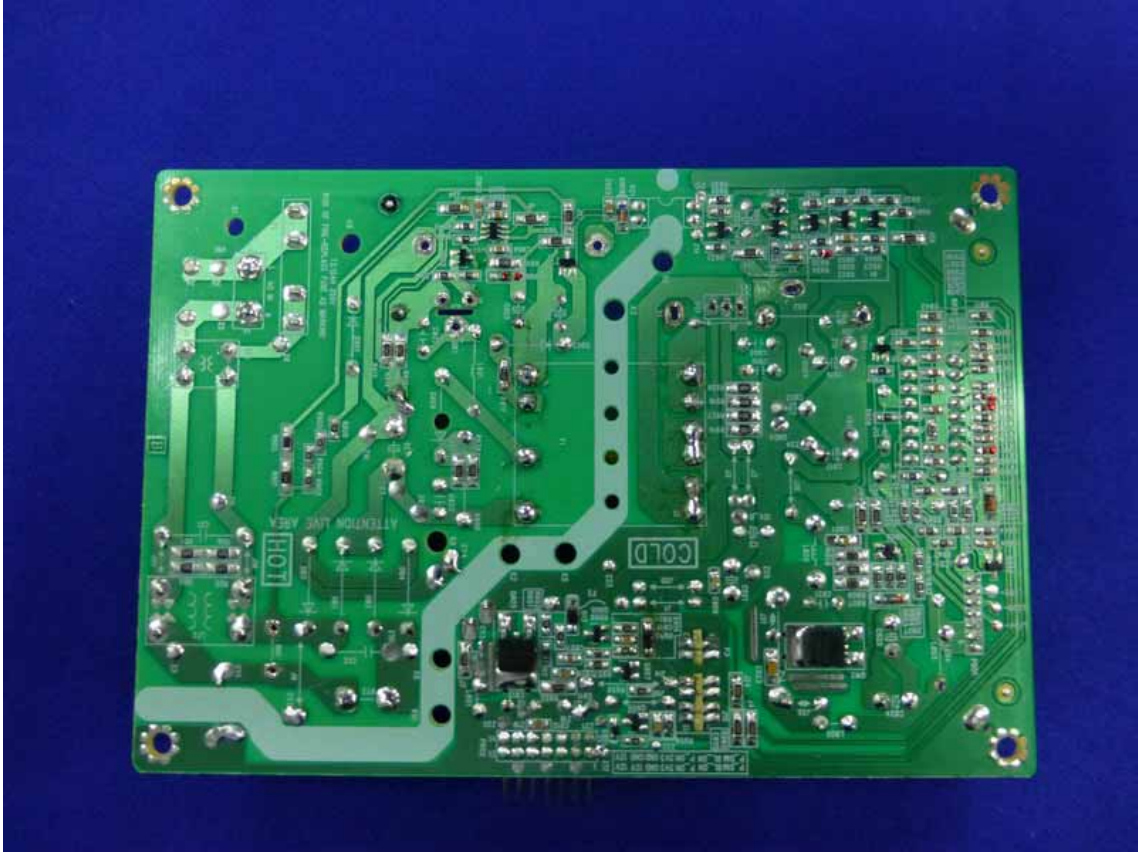
**Figure 18**  
Backside of the Power Board



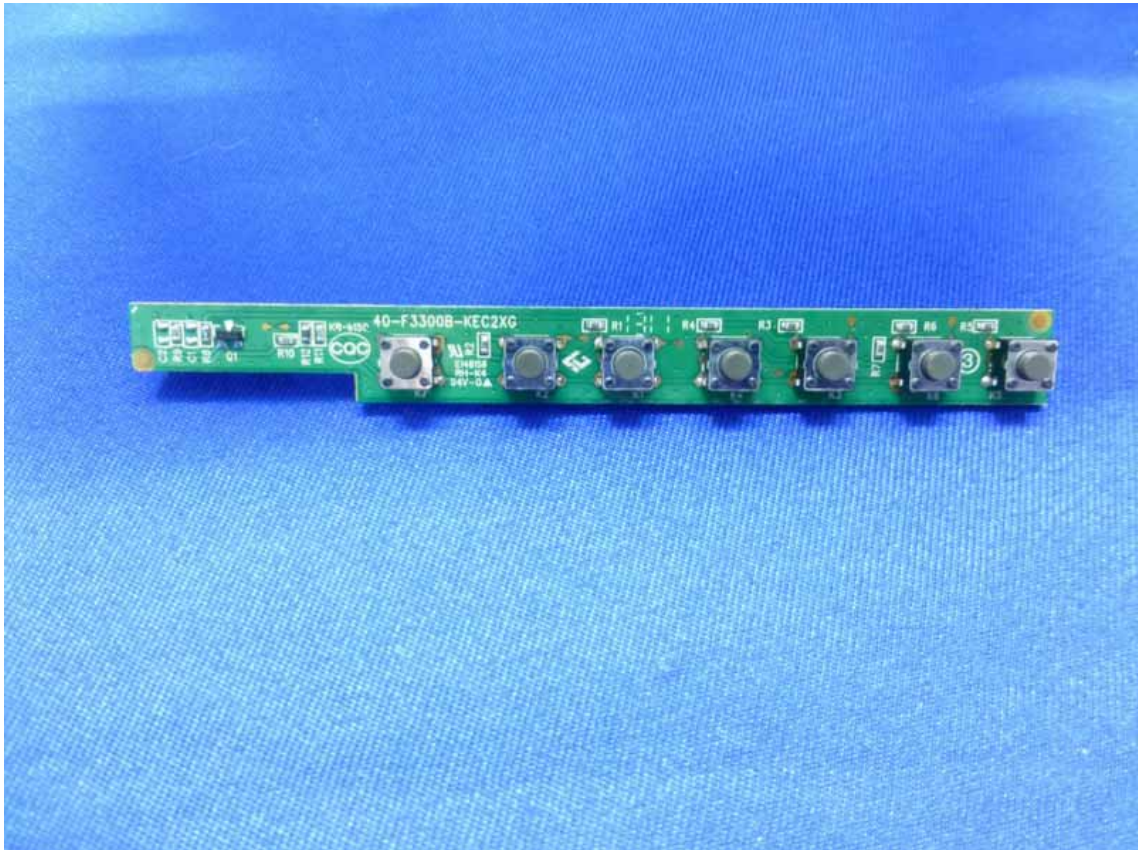
**Figure 19**  
Frontside of the Power Board



**Figure 20**  
Frontside of the Power Board

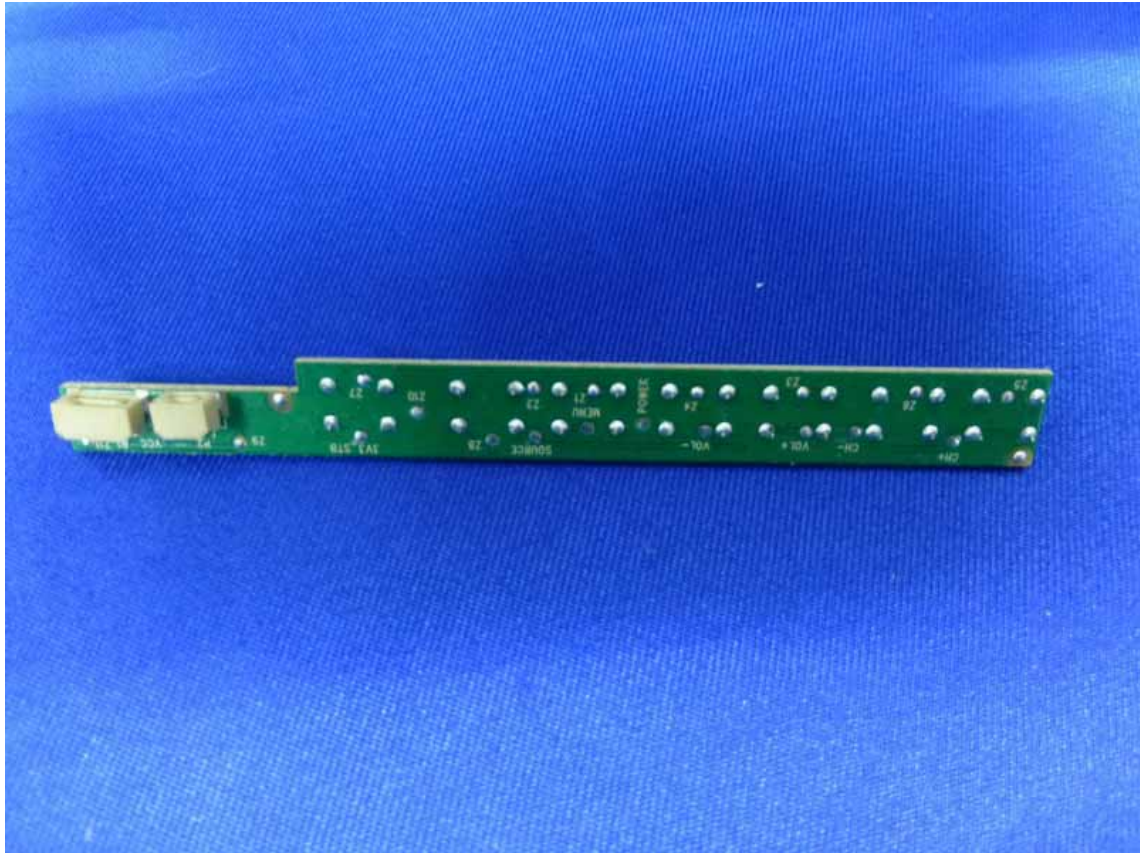


**Figure 21**  
Frontside of the PCB Board

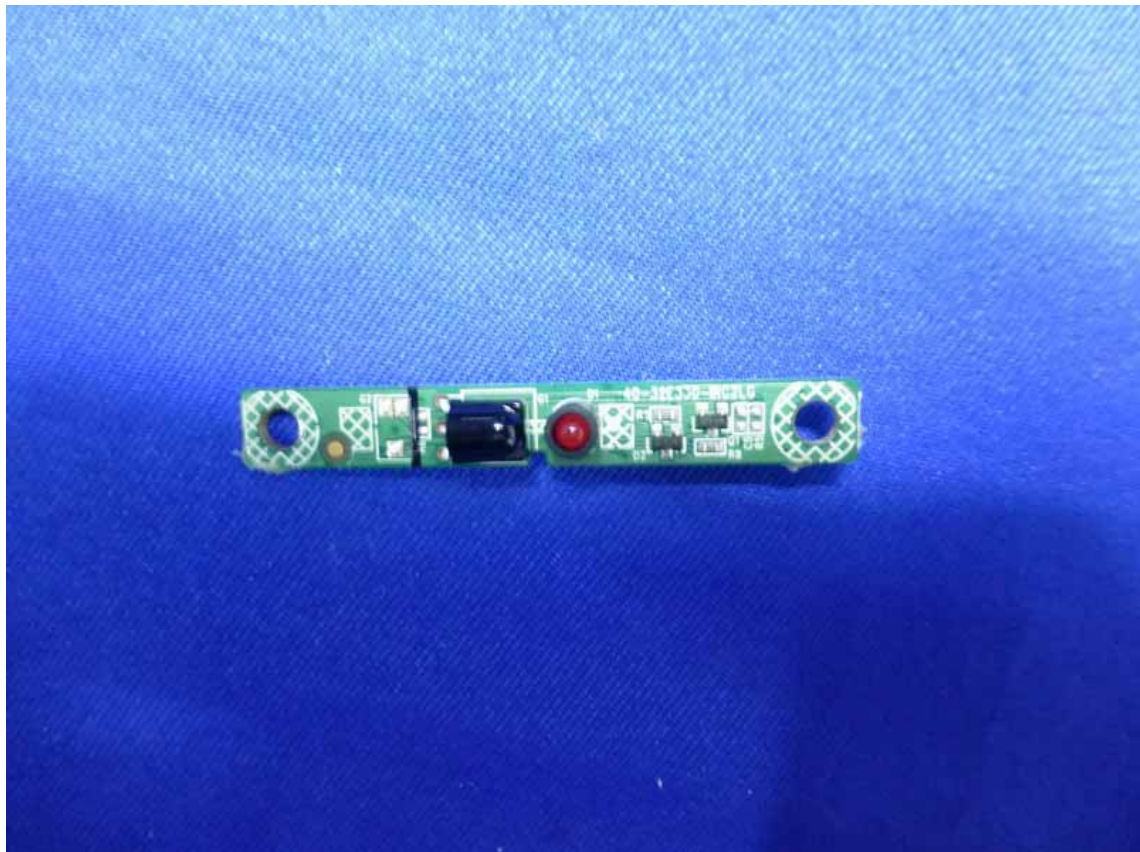




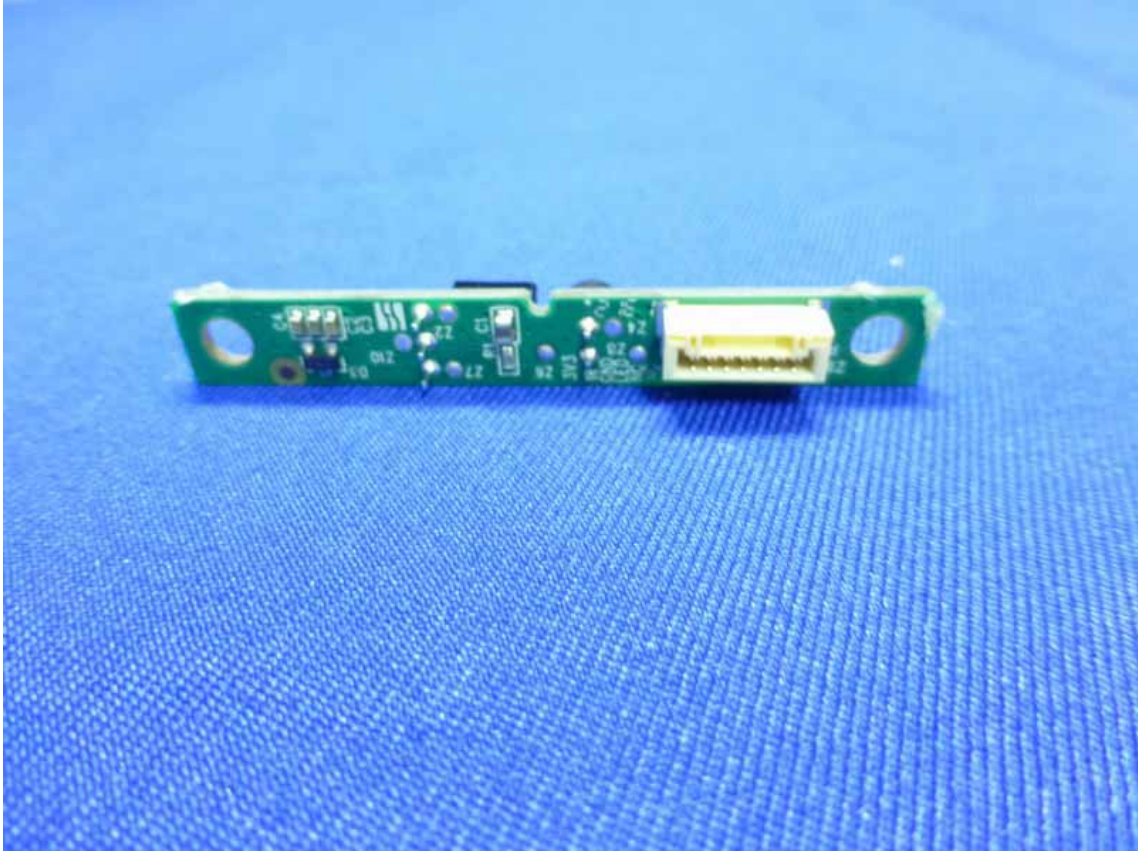
**Figure 22**  
Backside of the PCB Board



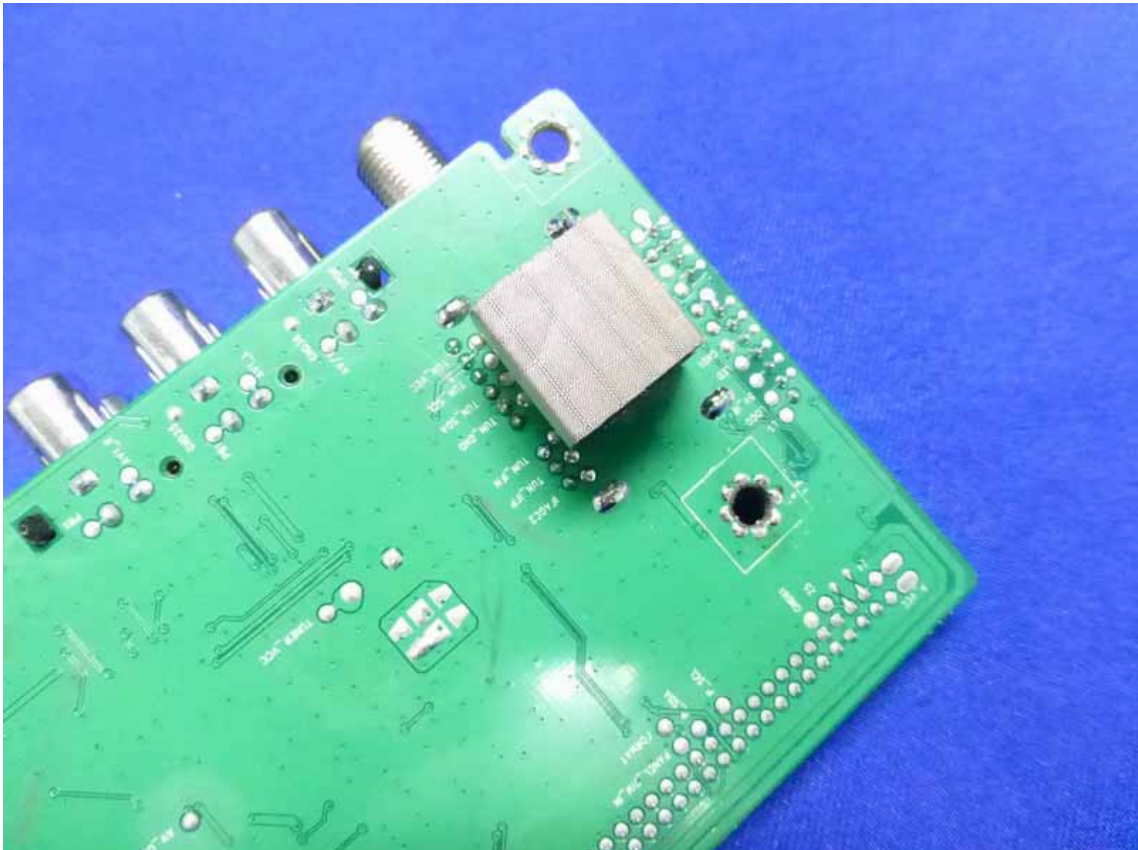
**Figure 23**  
Frontside of the PCB Board



**Figure 24**  
Backside of the PCB Board



**Figure 25**  
Backside of the PCB Board



**Figure 26**  
TV Tuner



**Figure 27**  
Speaker



**Figure 28**  
Speaker

