

Figure 7
Signal Port of the EUT



Figure 8
Inside Configuration of the EUT



Figure 9
Inside Configuration of the EUT



Figure 10
Inside Configuration of the EUT

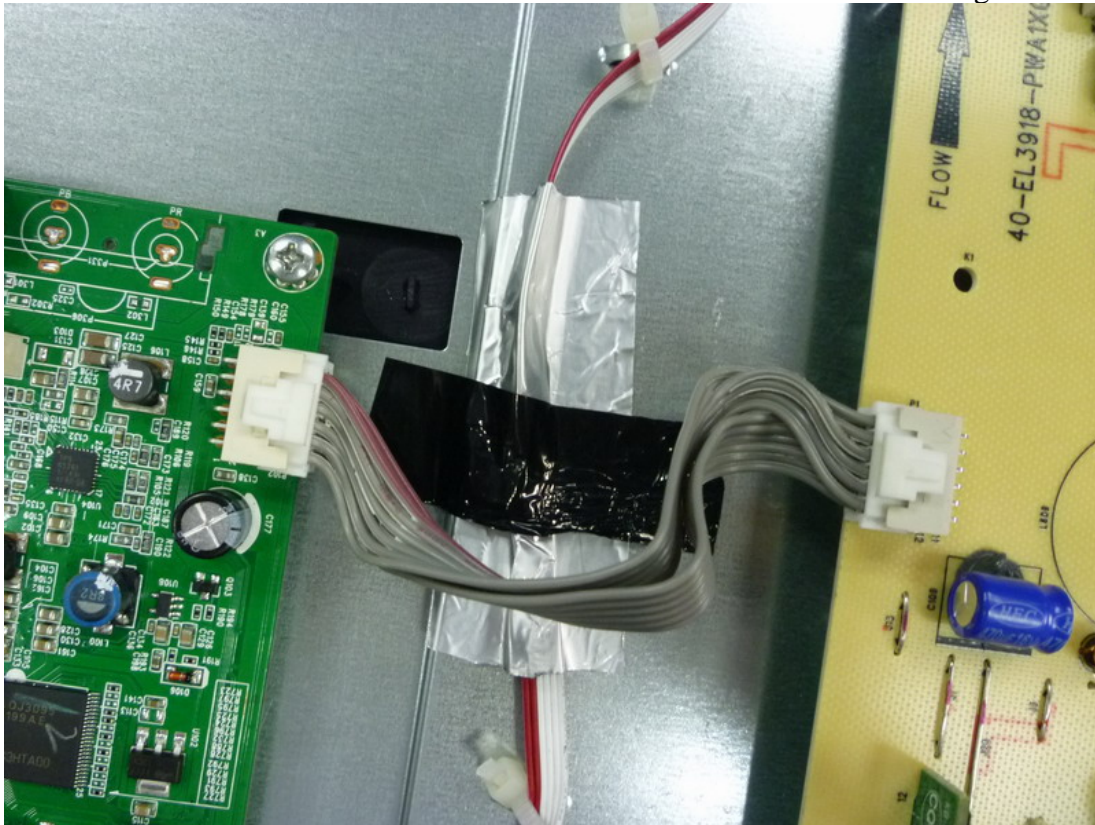


Figure 11
Inside Configuration of the EUT

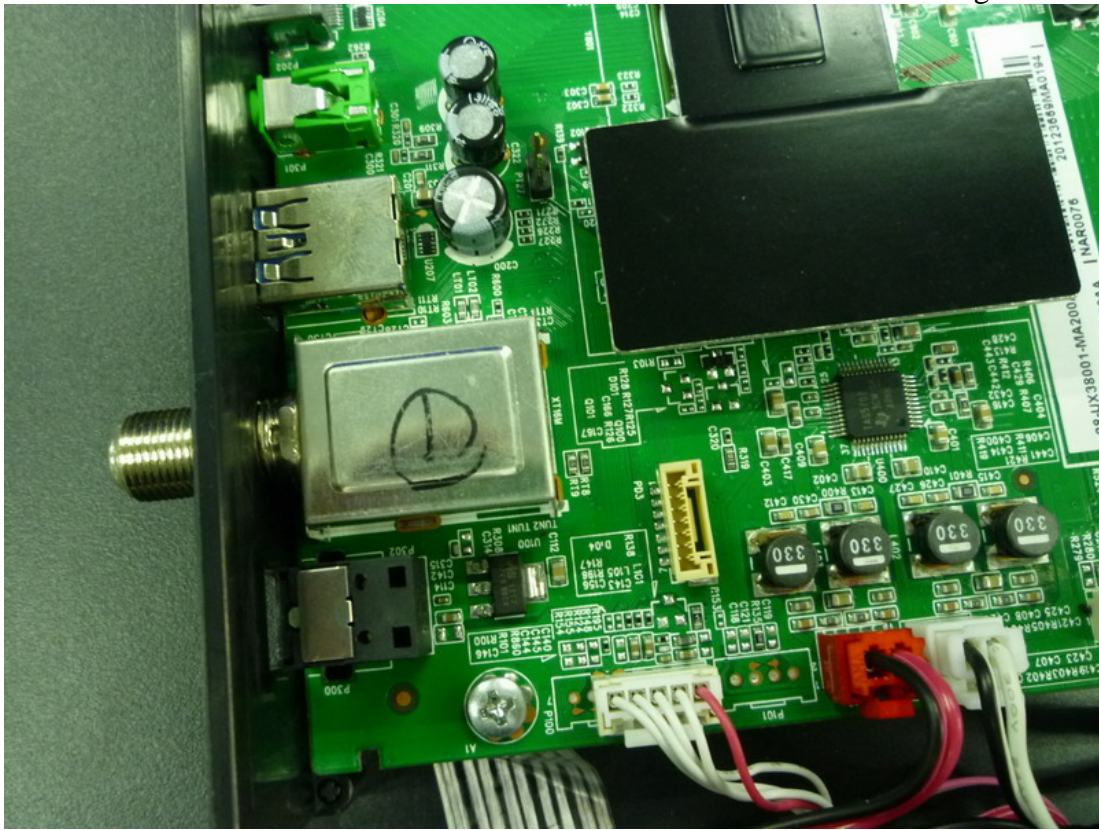


Figure 12
Inside Configuration of the EUT

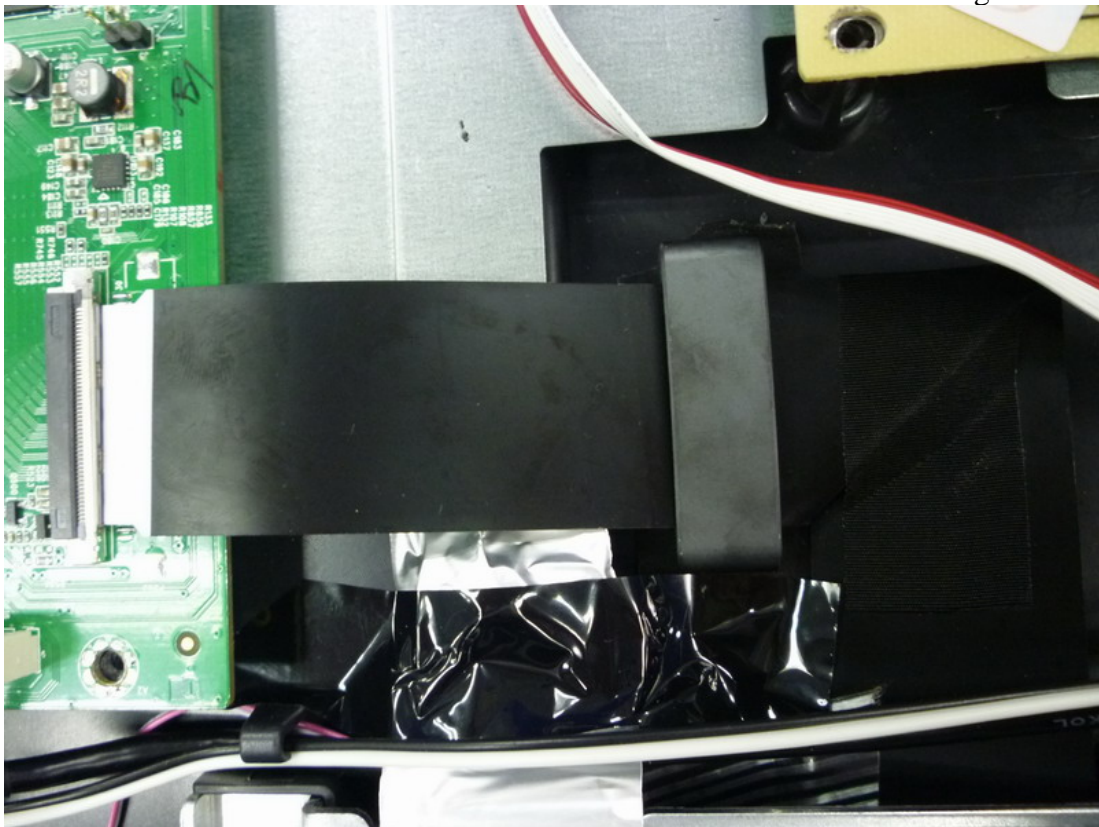


Figure 13
Inside Configuration of the EUT



Figure 14
Frontside of the LCD Panel



Figure 15
Backside of the LCD Panel

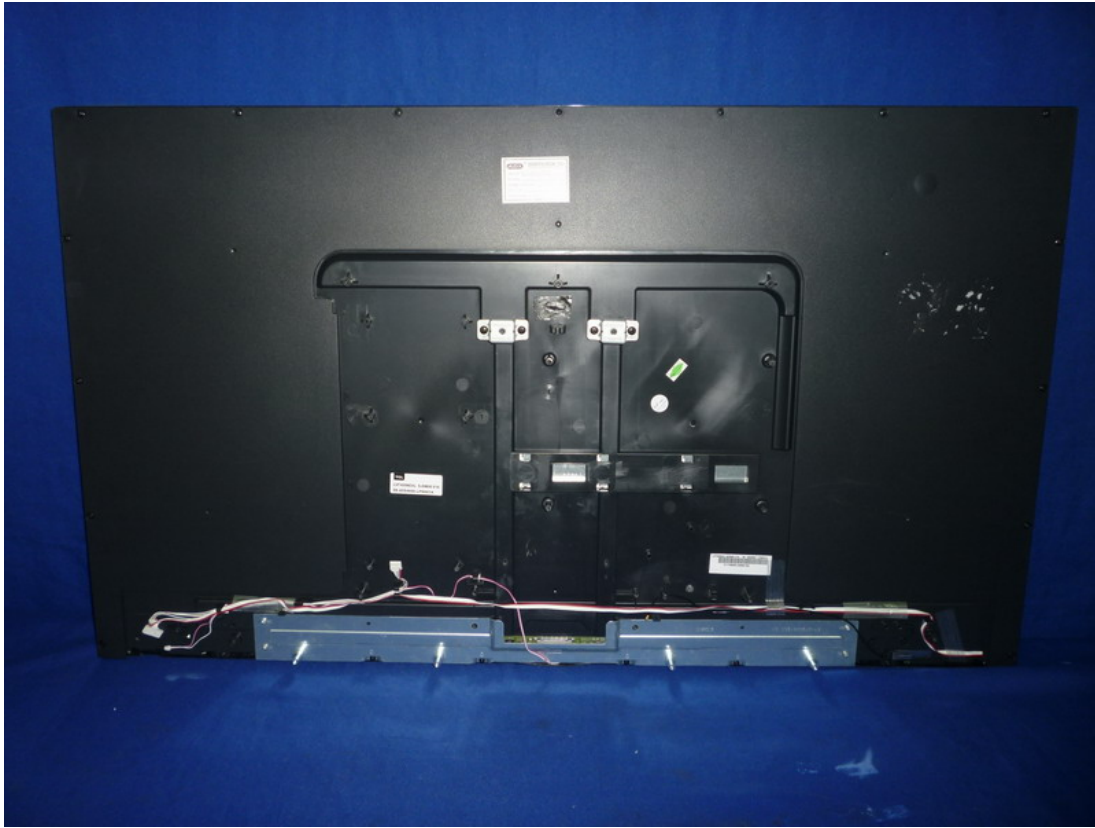


Figure 16
Label of the LCD Panel

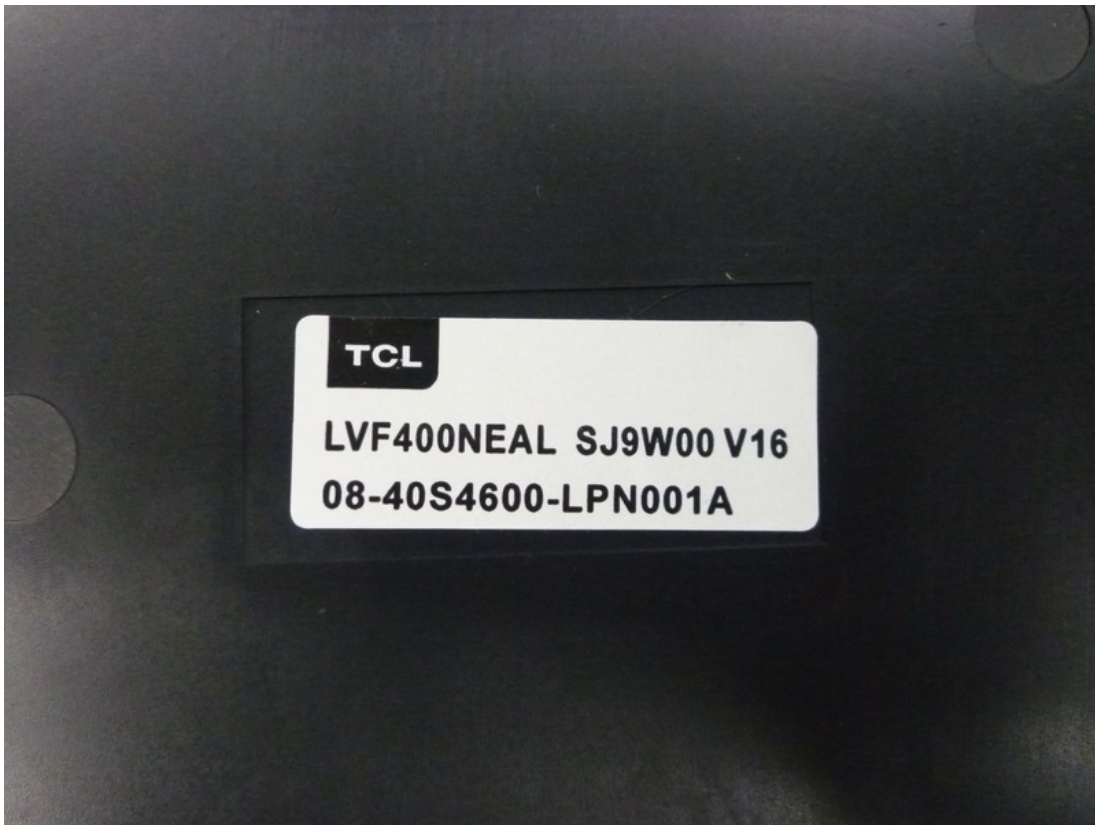


Figure 17
Frontside of the Main Board

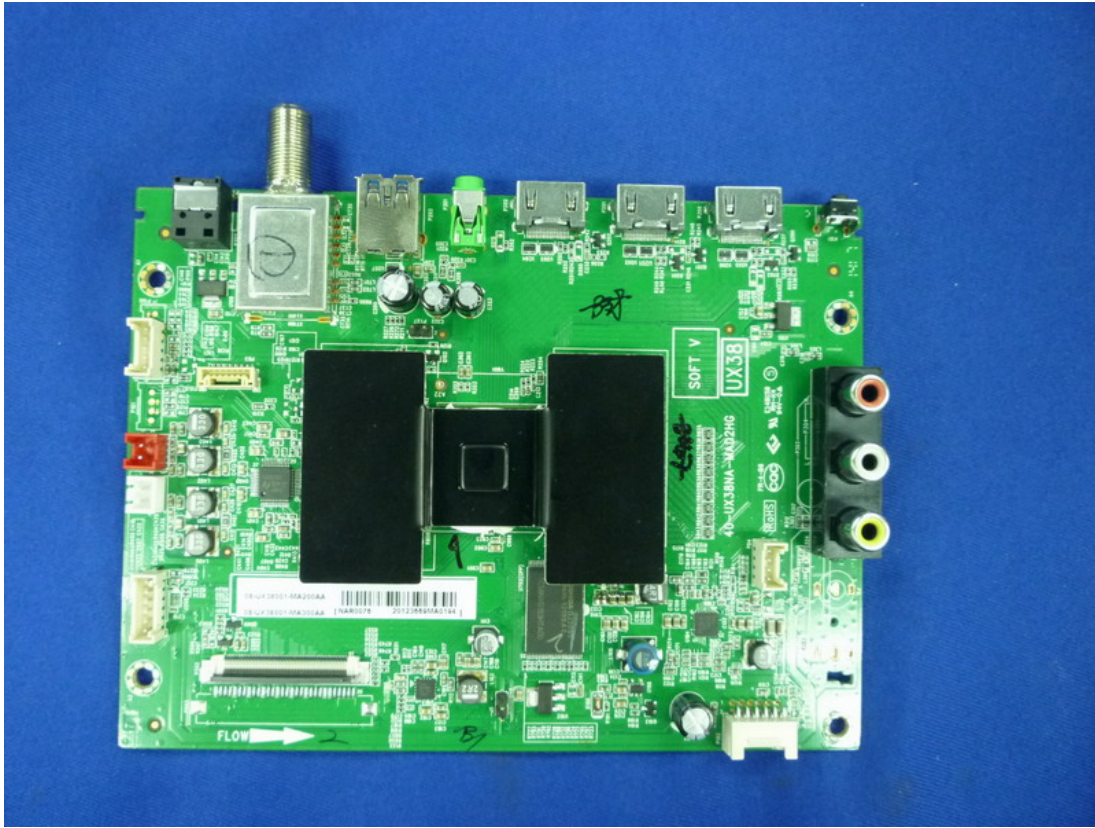


Figure 18
Backside of the Main Board

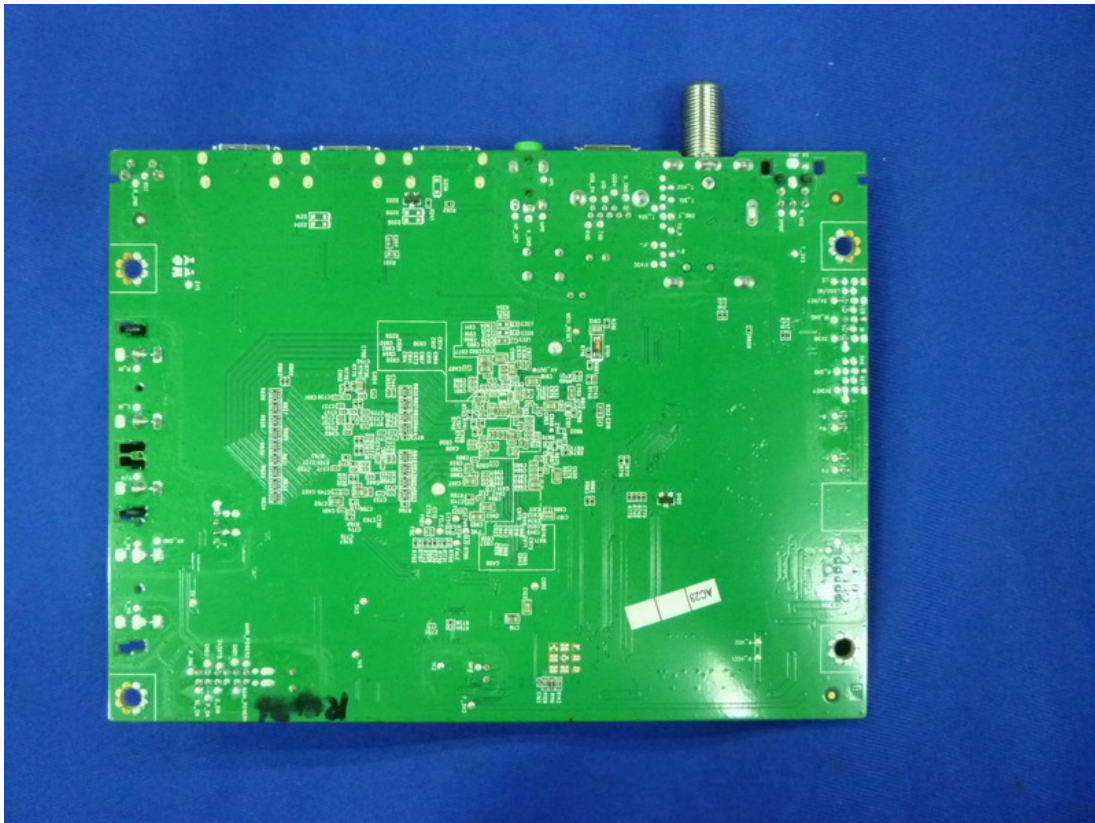


Figure 19
Frontside of the Main Board

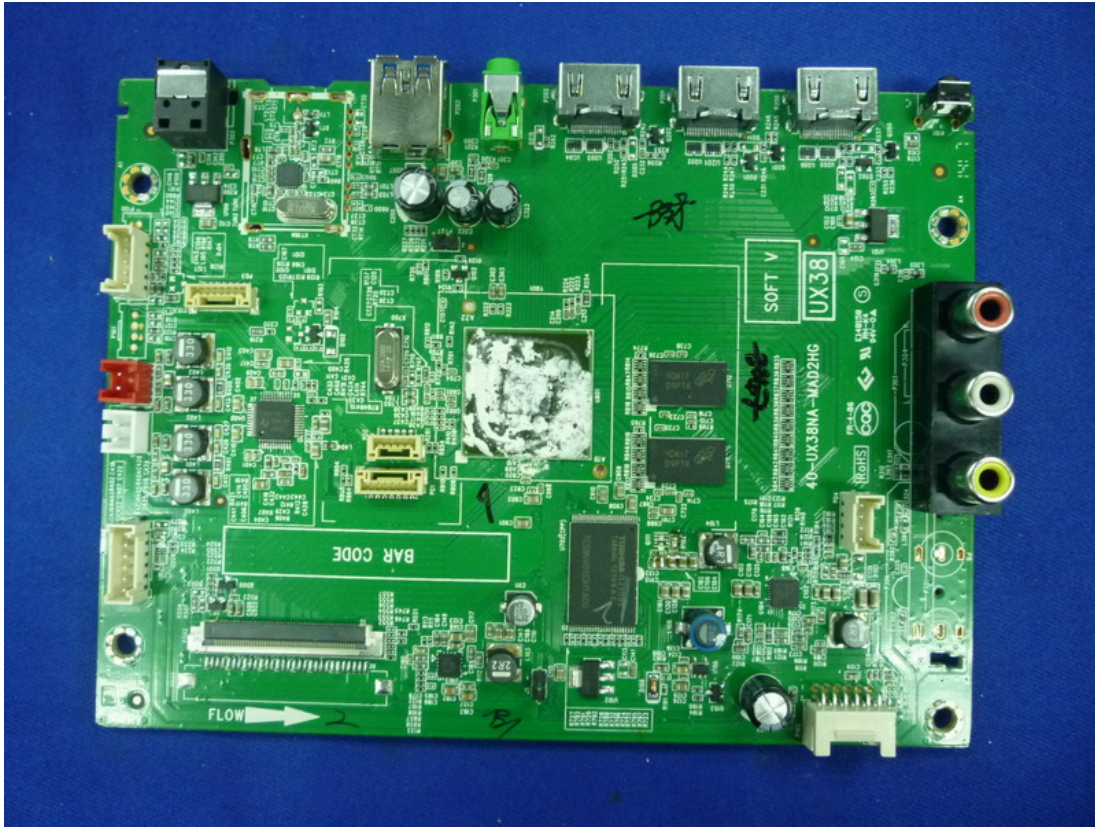


Figure 20
Backside of the Main Board

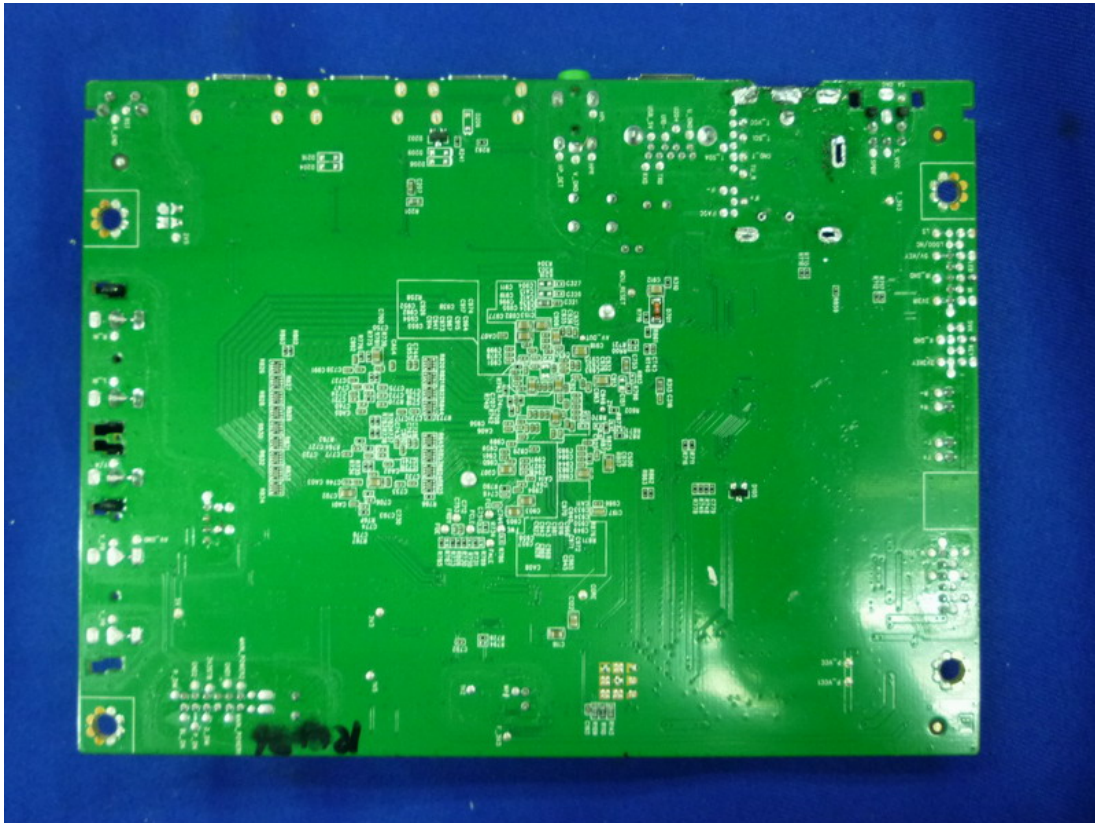


Figure 21
Frontside of the Power Board

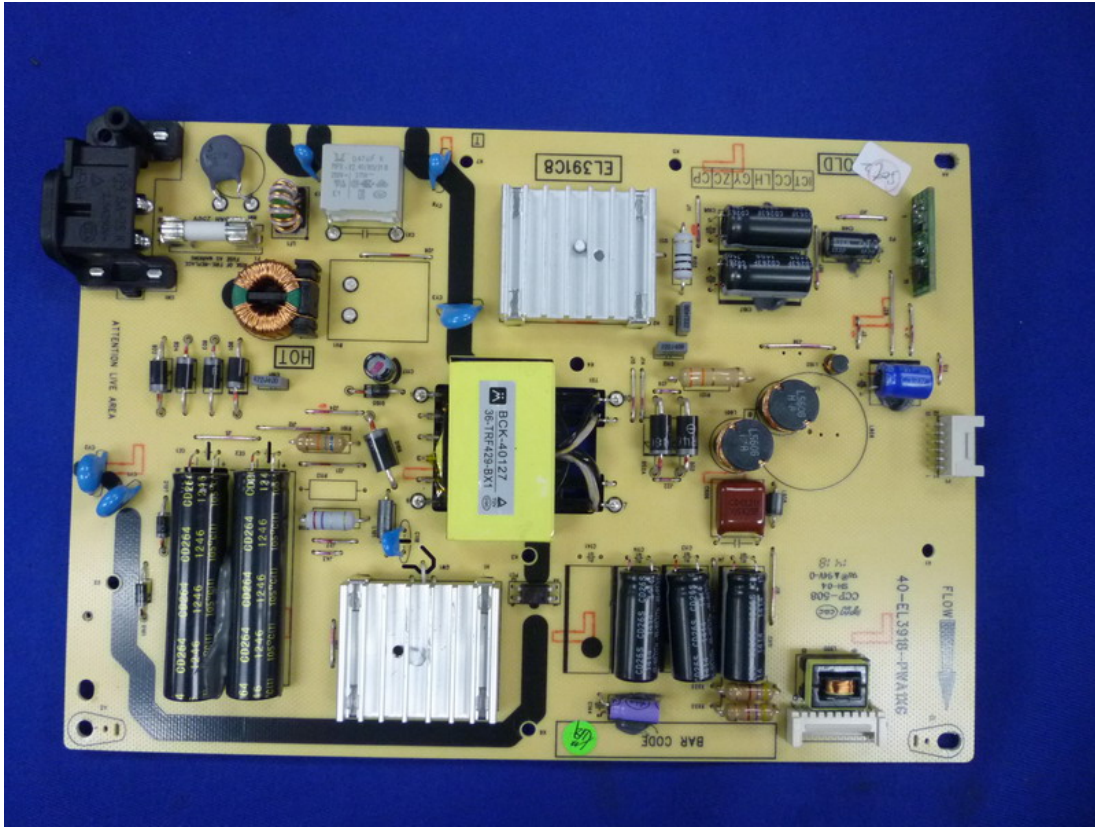


Figure 22
Backside of the Power Board

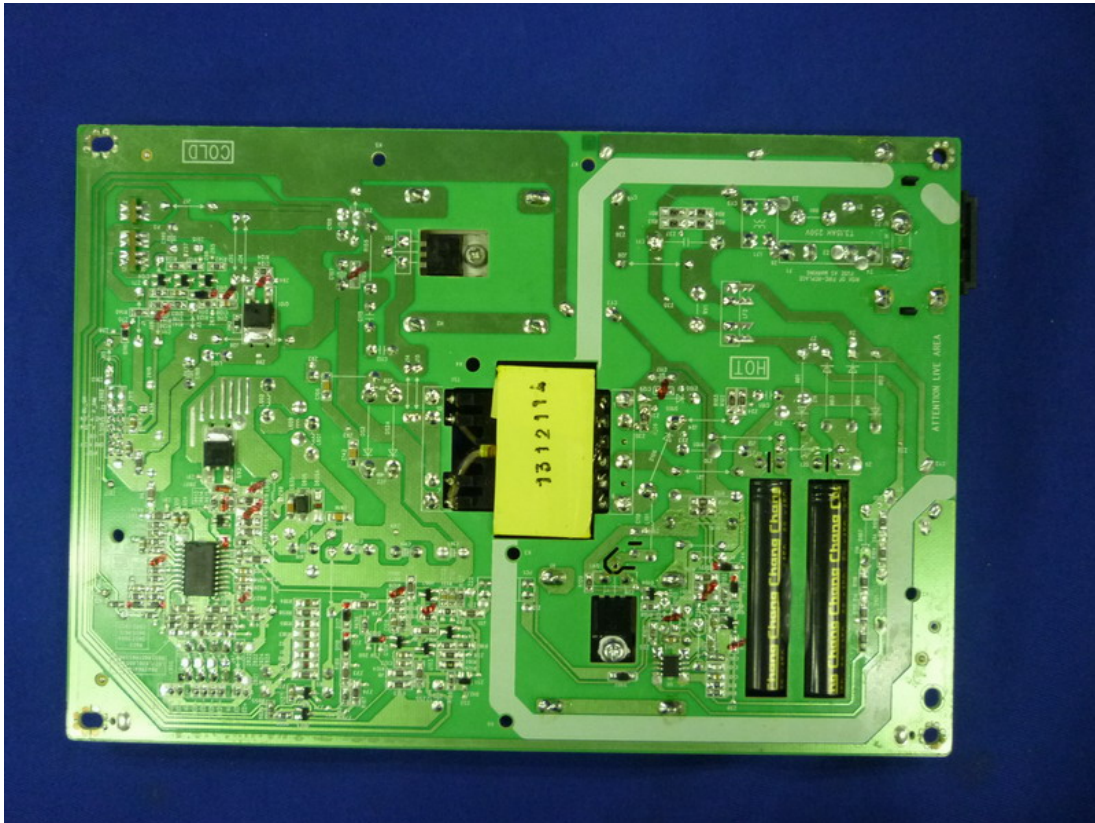


Figure 23
Frontside of the Power Board

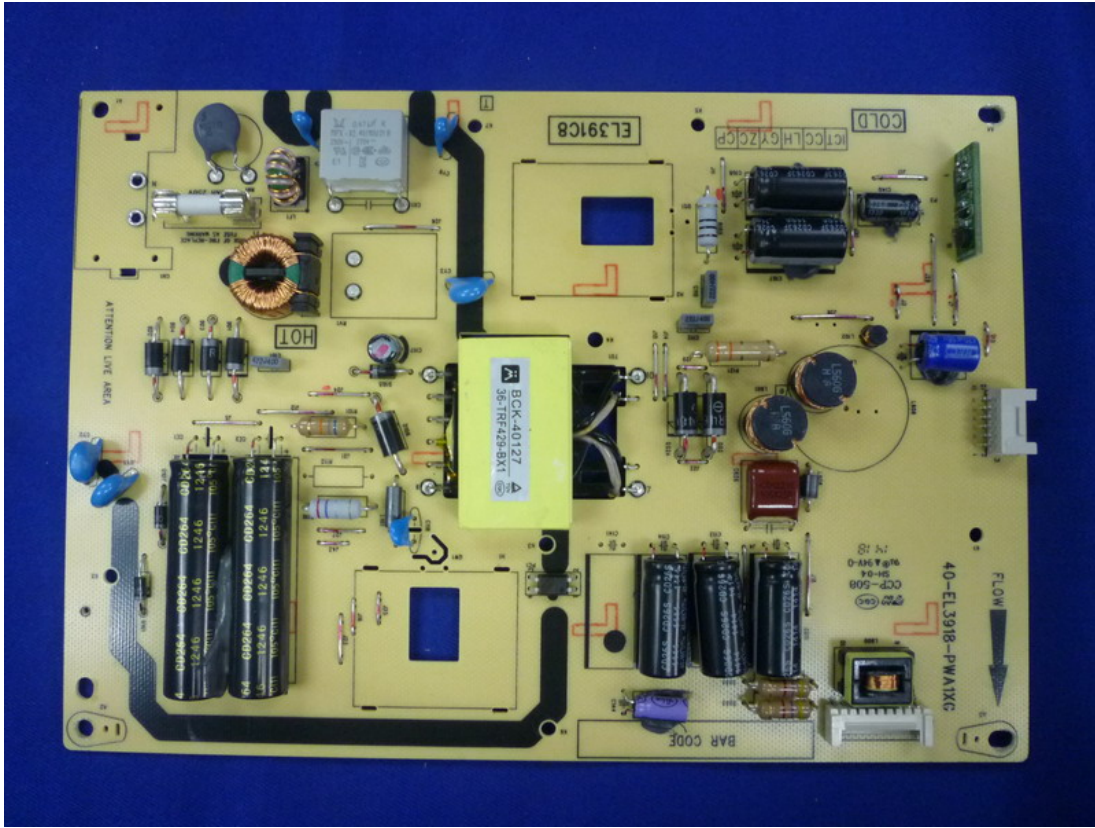


Figure 24
Backside of the Power Board

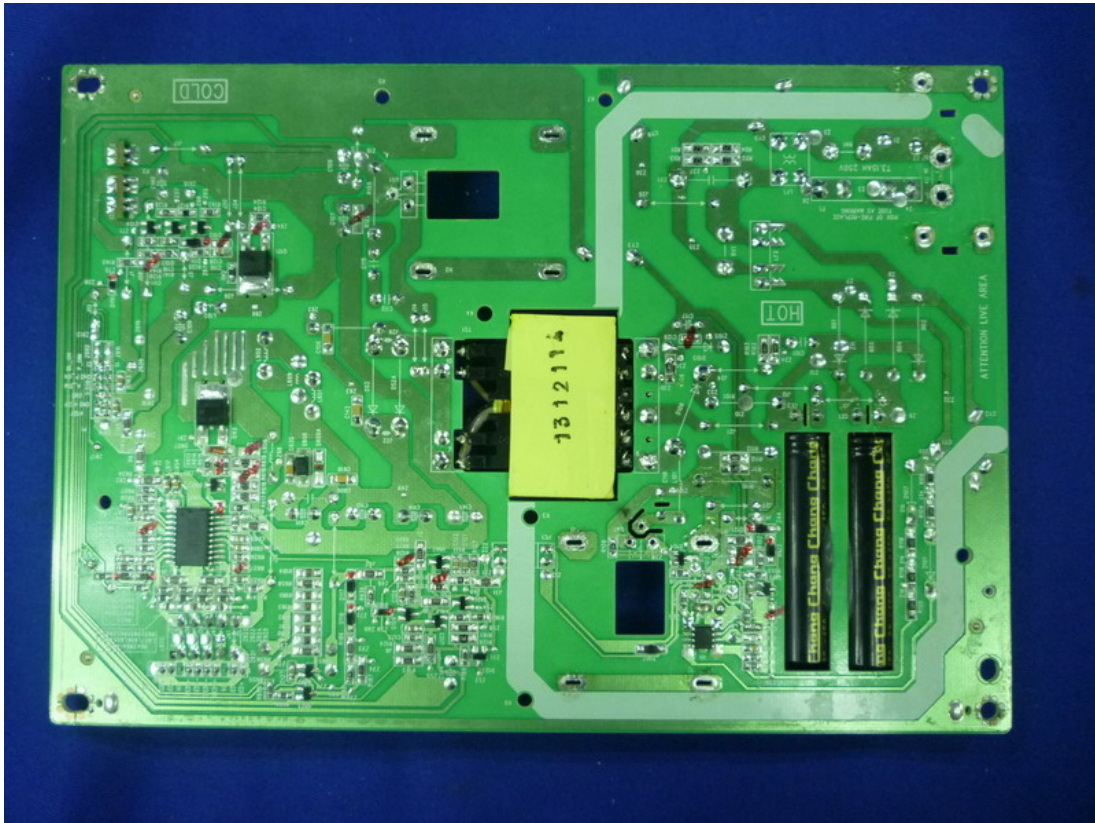


Figure 25
Frontside of the PCB Board



Figure 26
Backside of the PCB Board

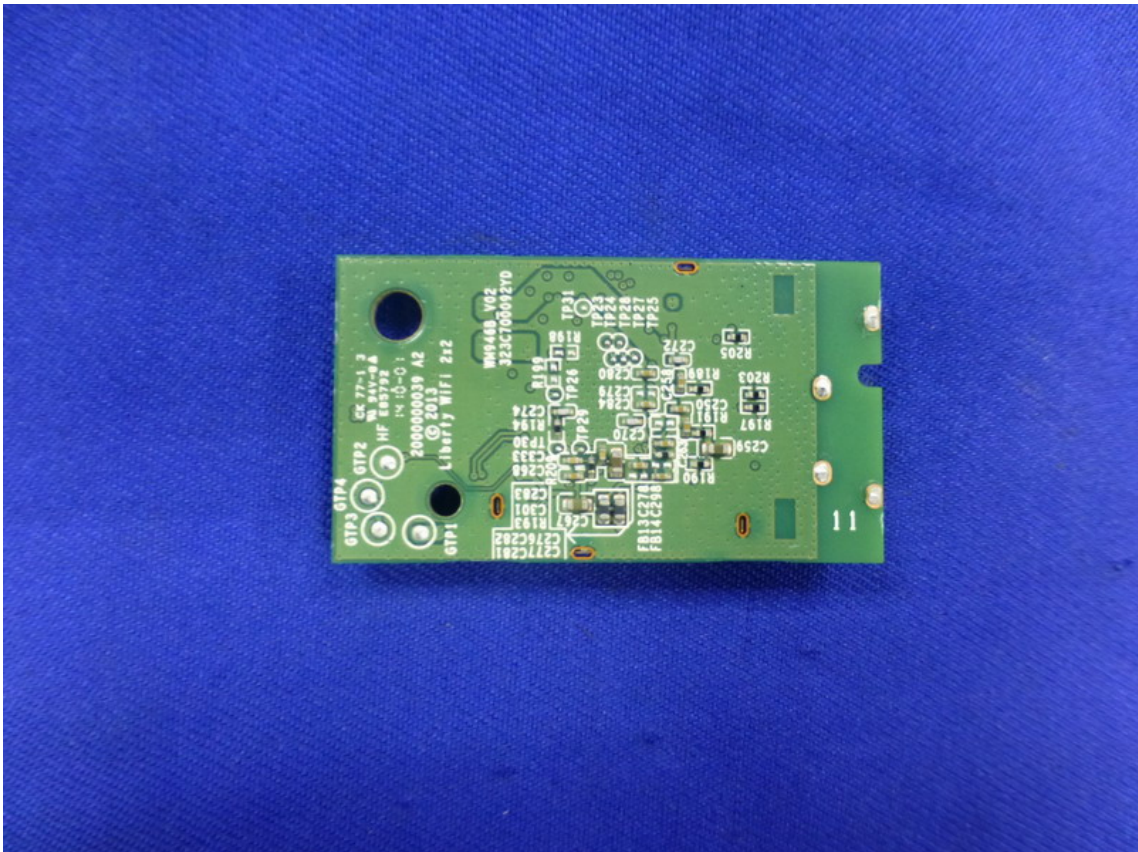


Figure 27
Frontside of the PCB Board

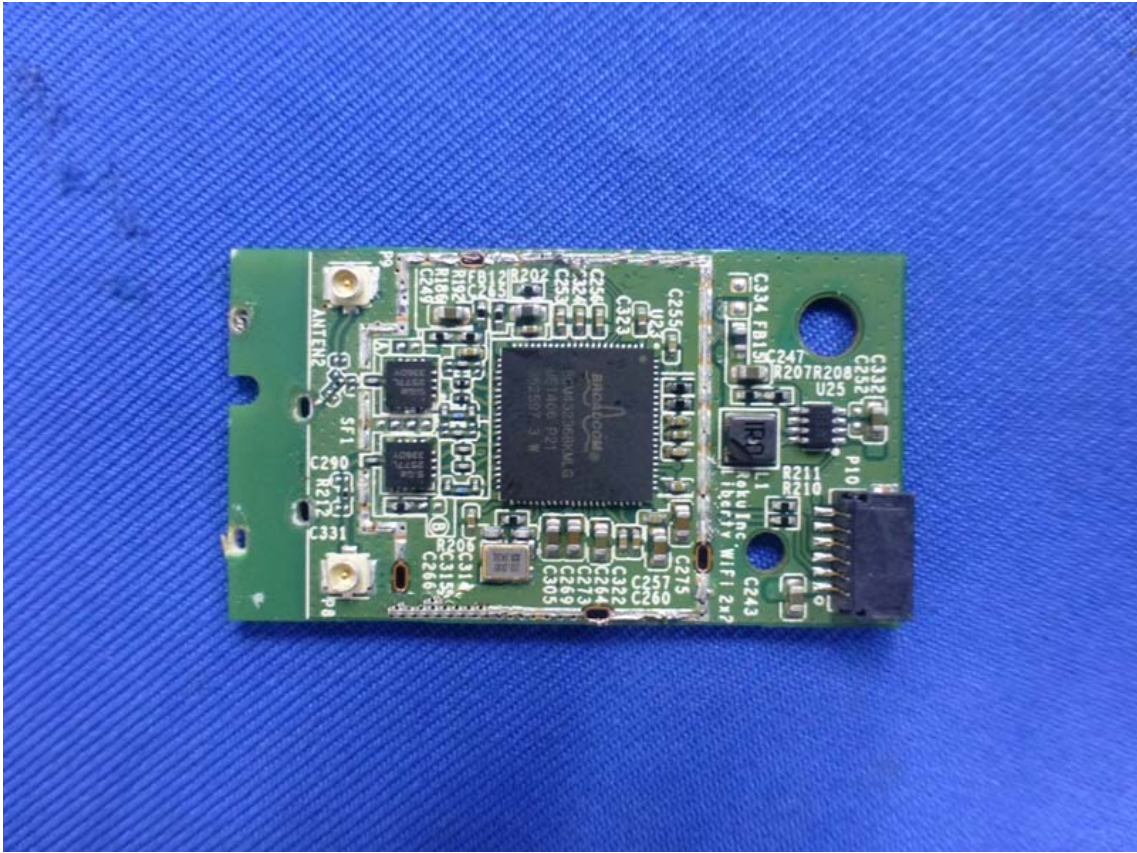


Figure 28
Backside of the PCB Board

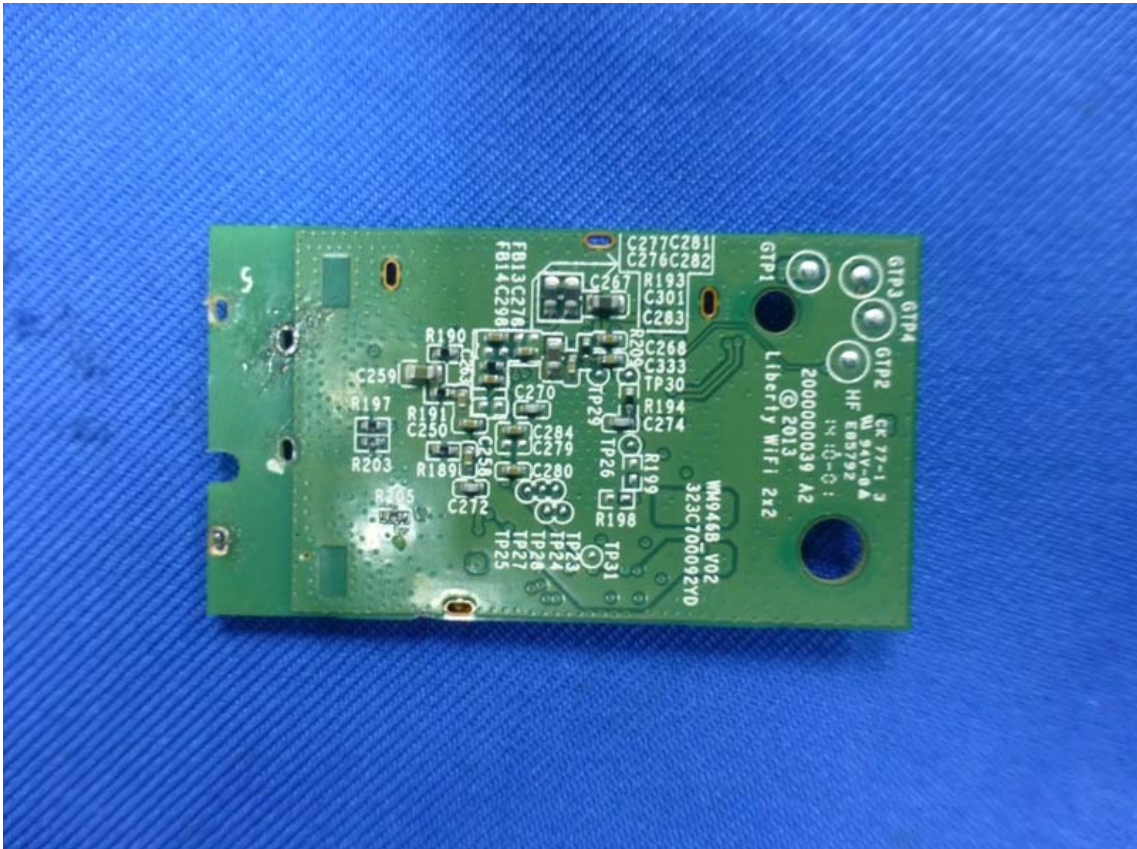


Figure 29
Frontside of the PCB Board

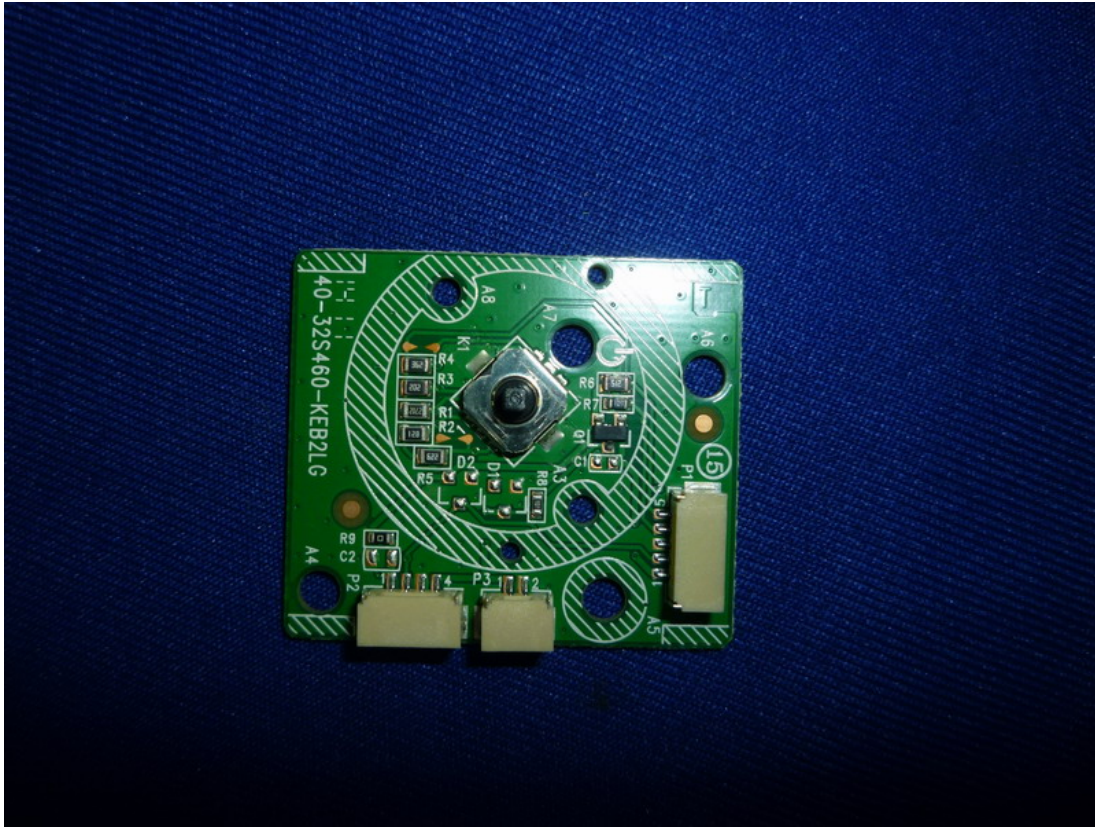


Figure 30
Backside of the PCB Board

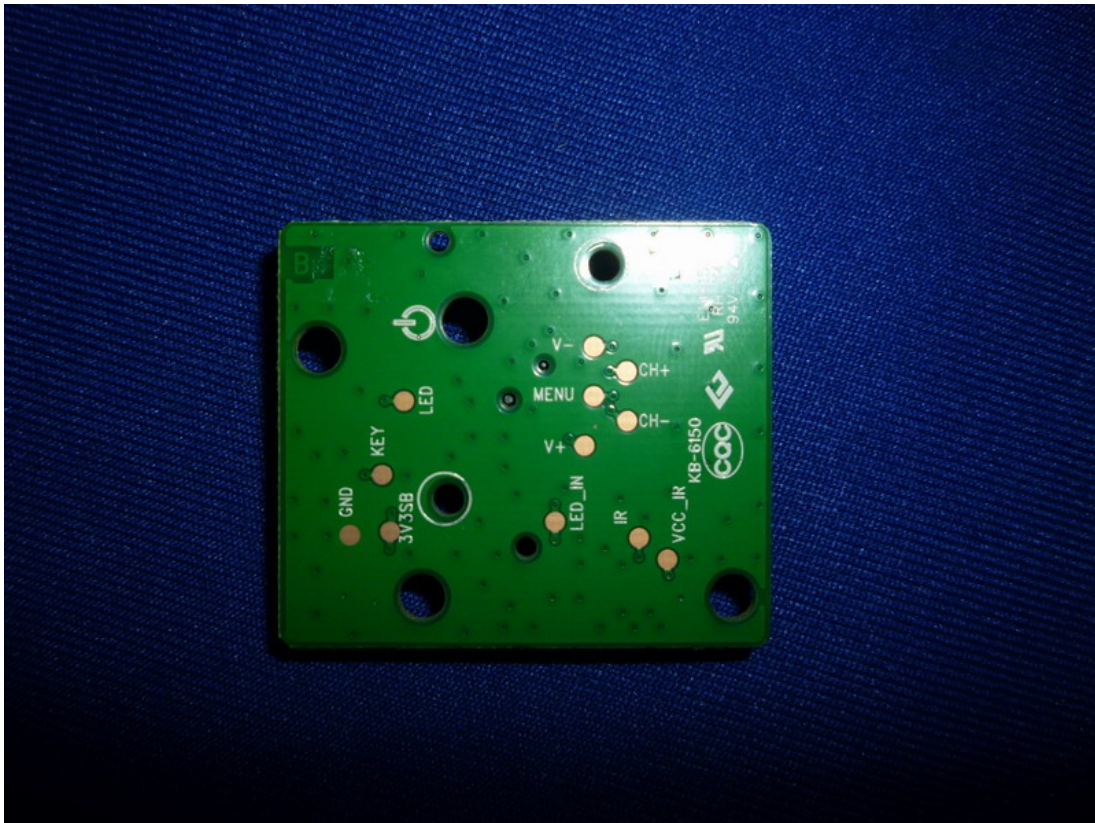


Figure 31
Frontside of the PCB Board

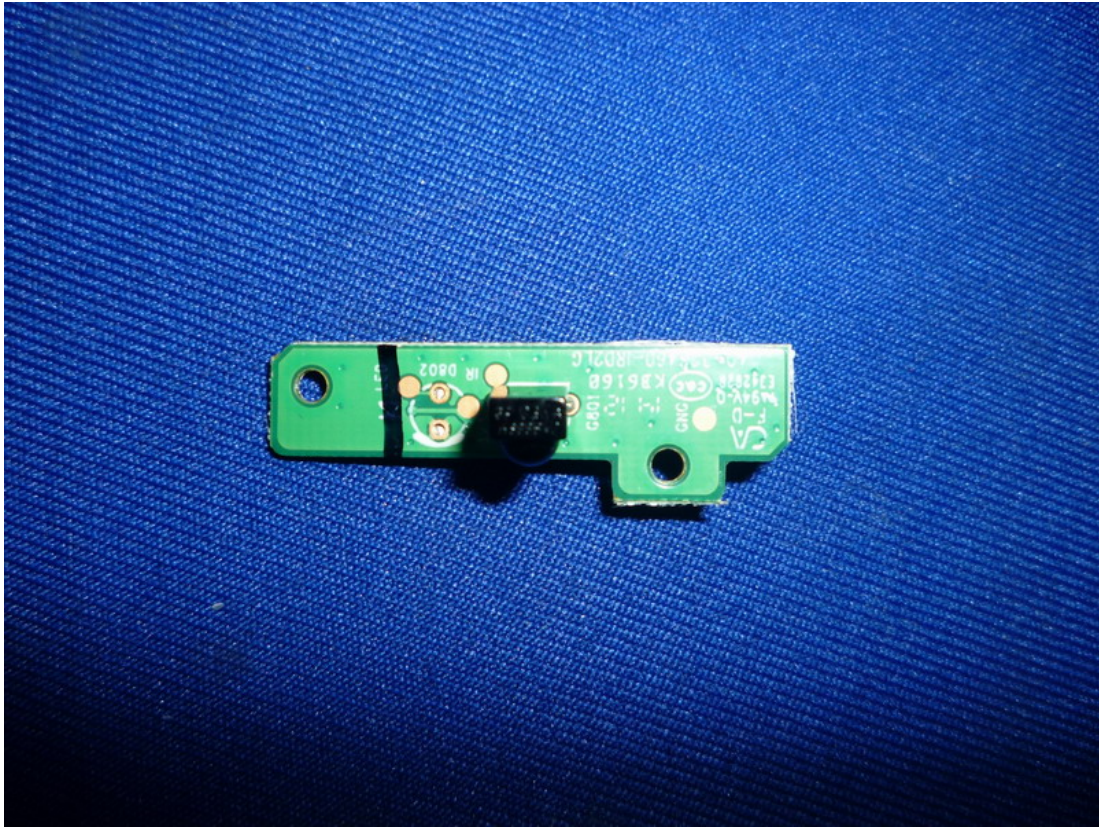


Figure 32
Backside of the PCB Board

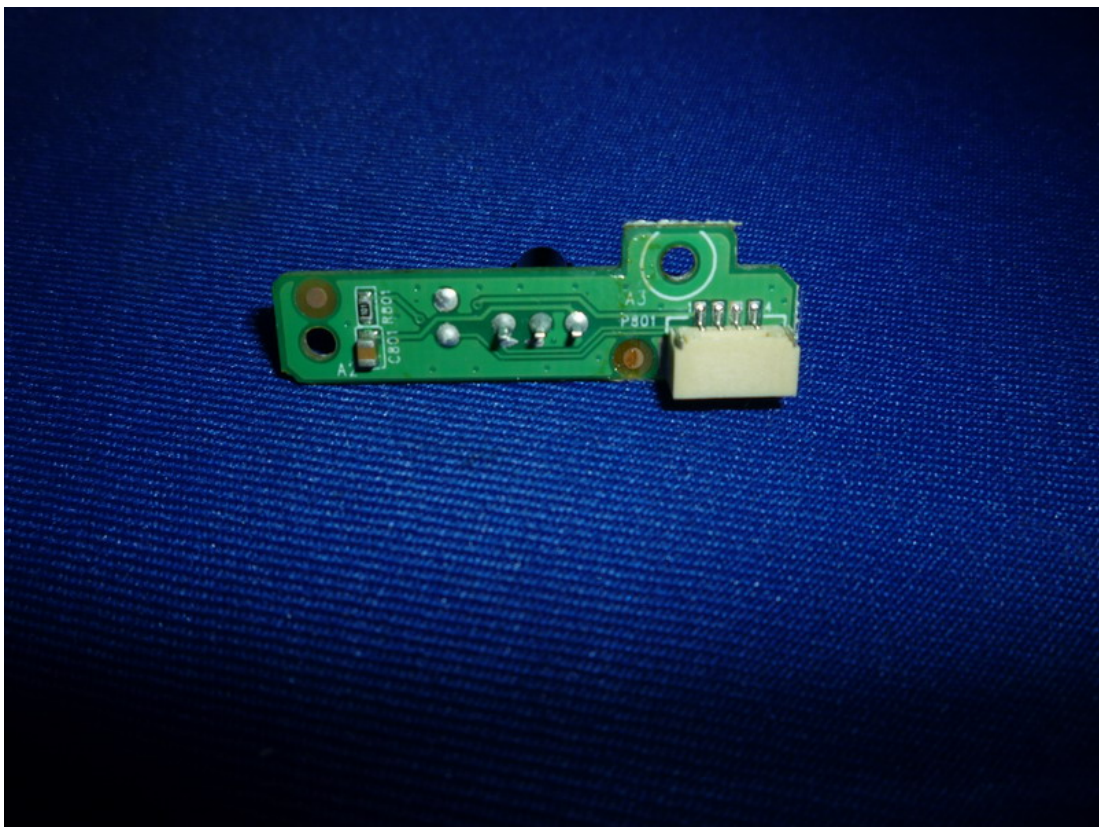


Figure 33
Speaker

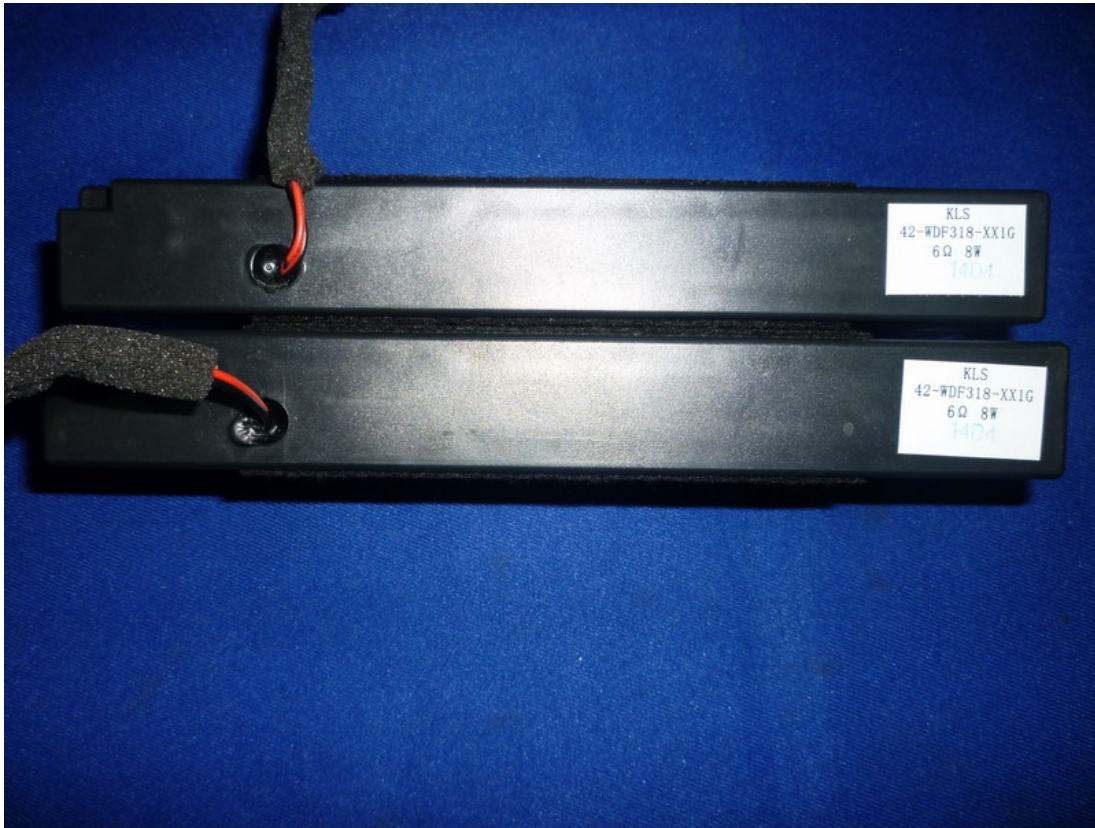


Figure 34
Speaker



Figure 35
Remote



Figure 36
Remote

