

**Figure 5**  
Signal Port of the EUT



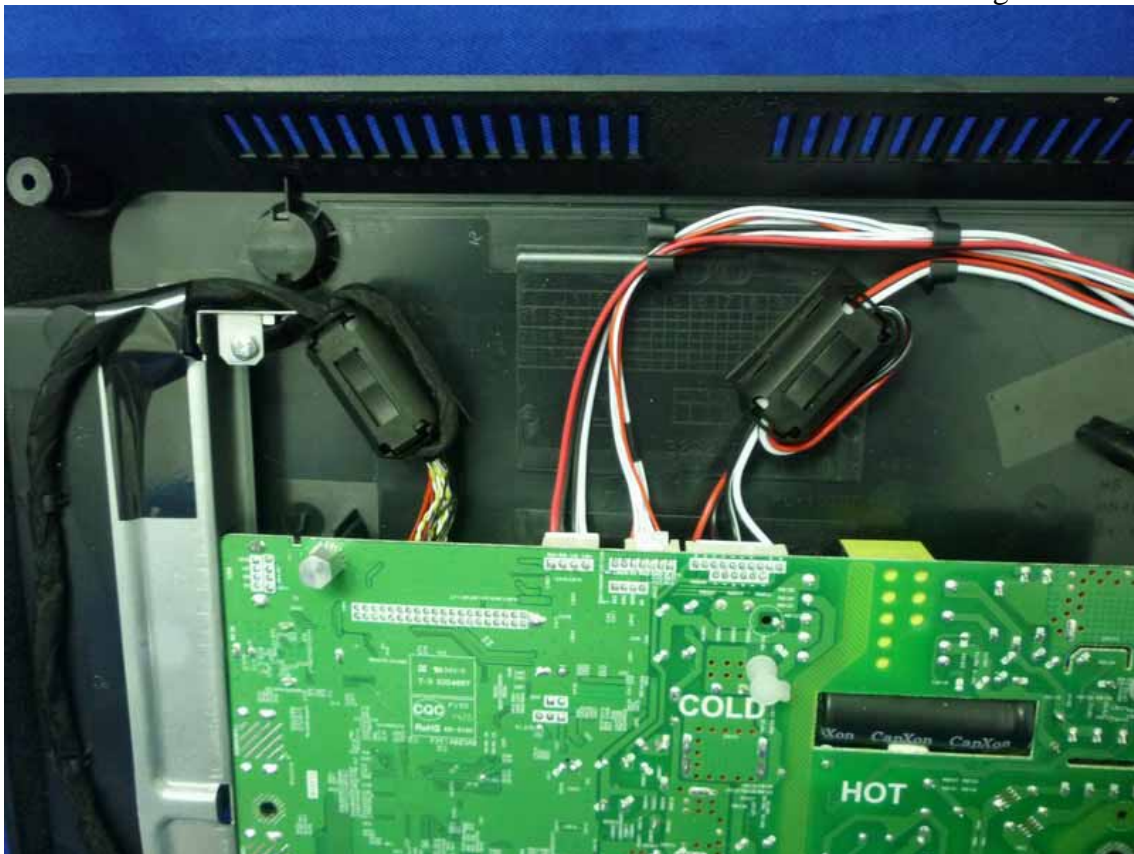
**Figure 6**  
Inside Configuration of the EUT



**Figure 7**  
Inside Configuration of the EUT



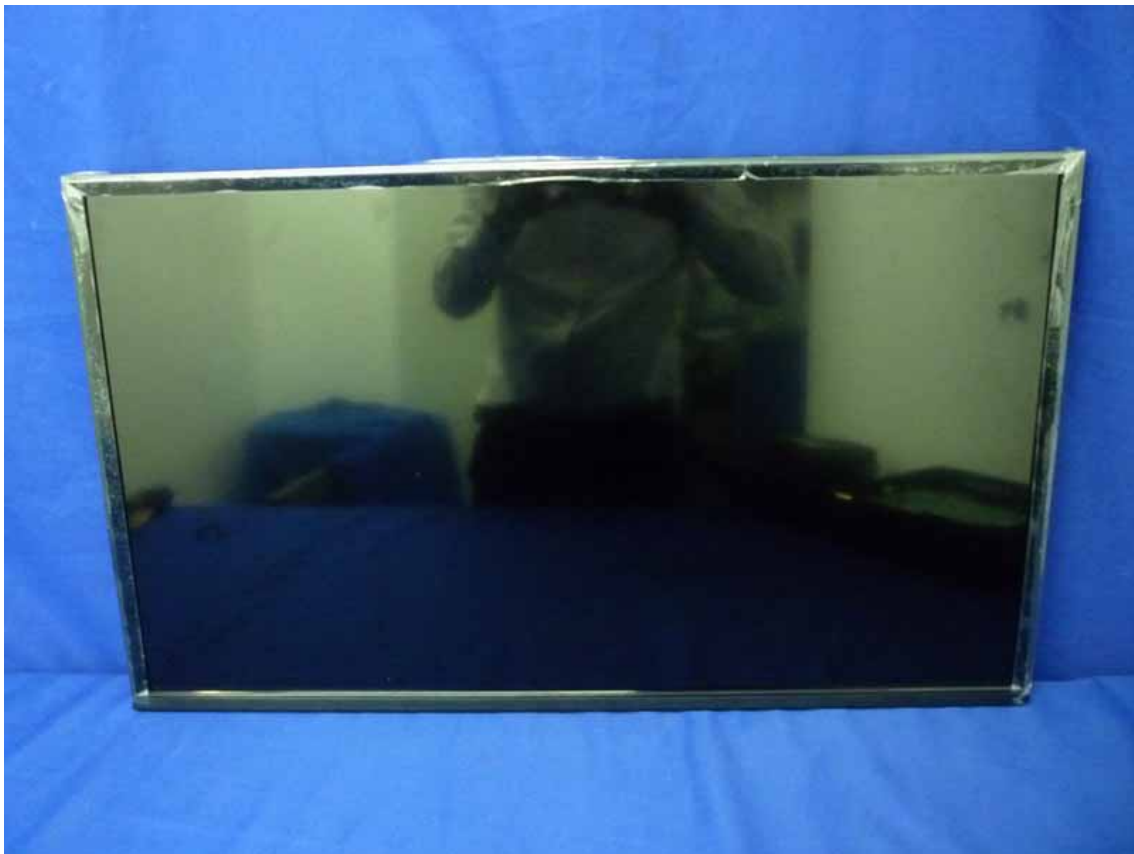
**Figure 8**  
Inside Configuration of the EUT



**Figure 9**  
Inside Configuration of the EUT



**Figure 10**  
Frontside of the LCD Panel





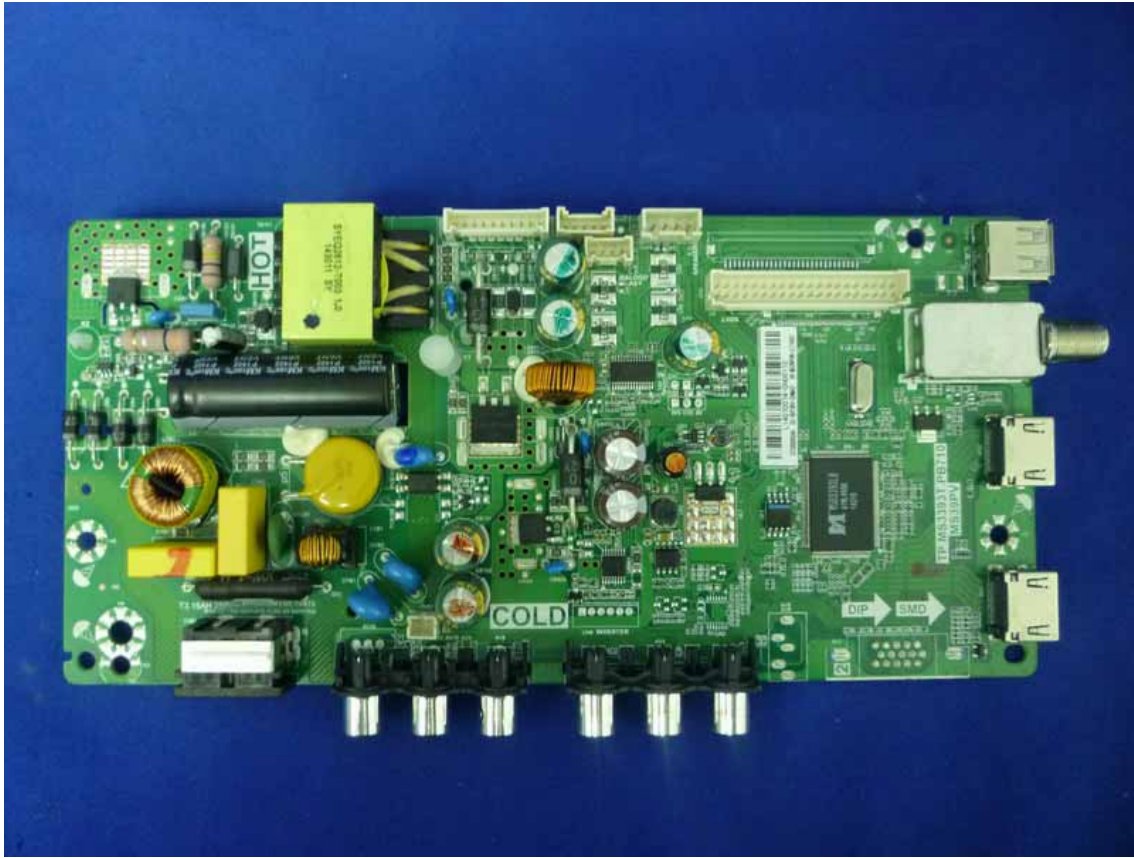
**Figure 11**  
Frontside of the PCB Board



**Figure 12**  
Backside of the PCB Board



**Figure 13**  
Frontside of the Main Board

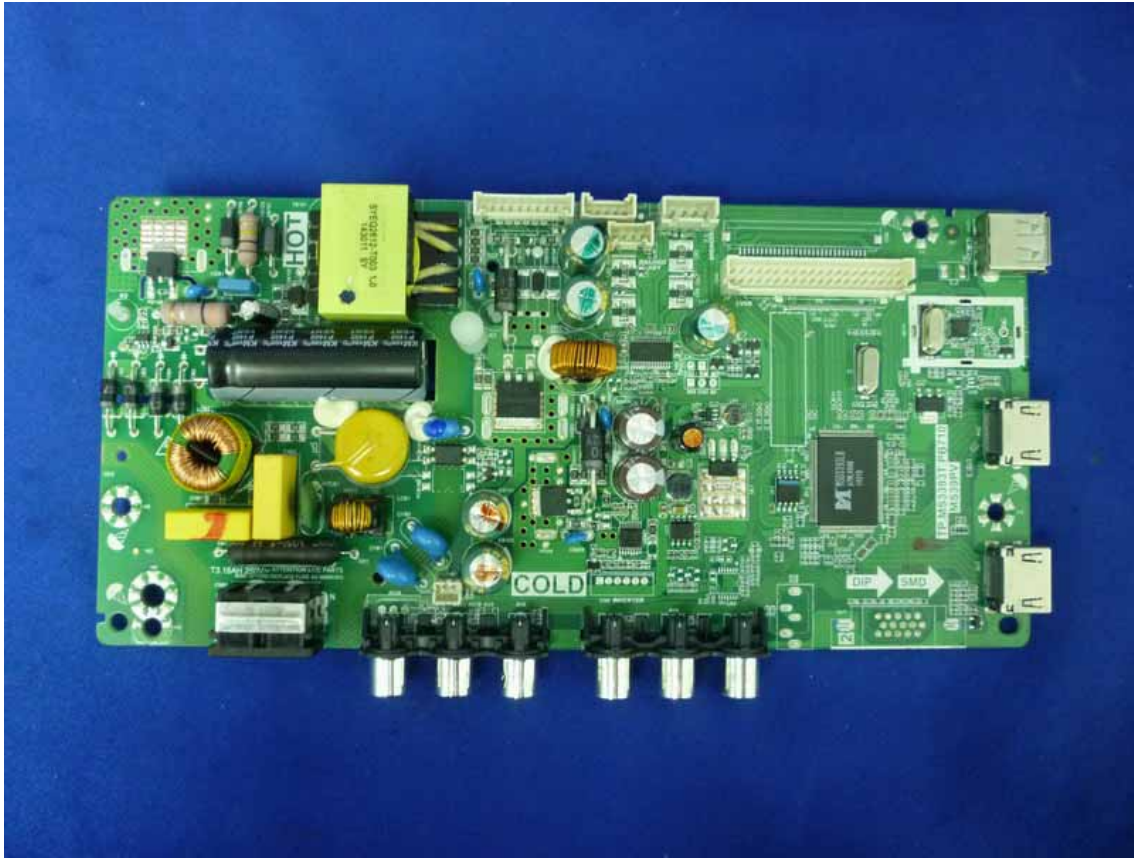


**Figure 14**  
Backside of the Main Board





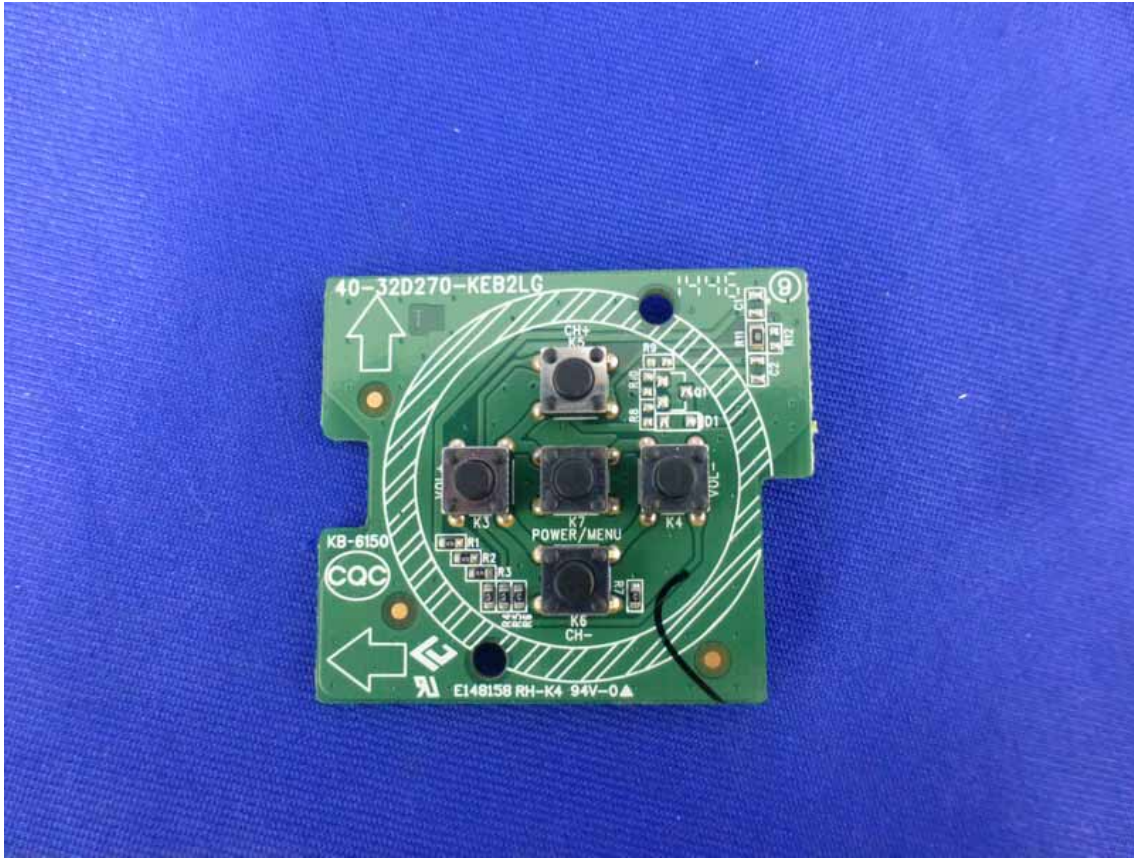
**Figure 15**  
Frontside of the Main Board



**Figure 16**  
Backside of the Main Board



**Figure 17**  
Frontside of the PCB Board



**Figure 18**  
Backside of the PCB Board

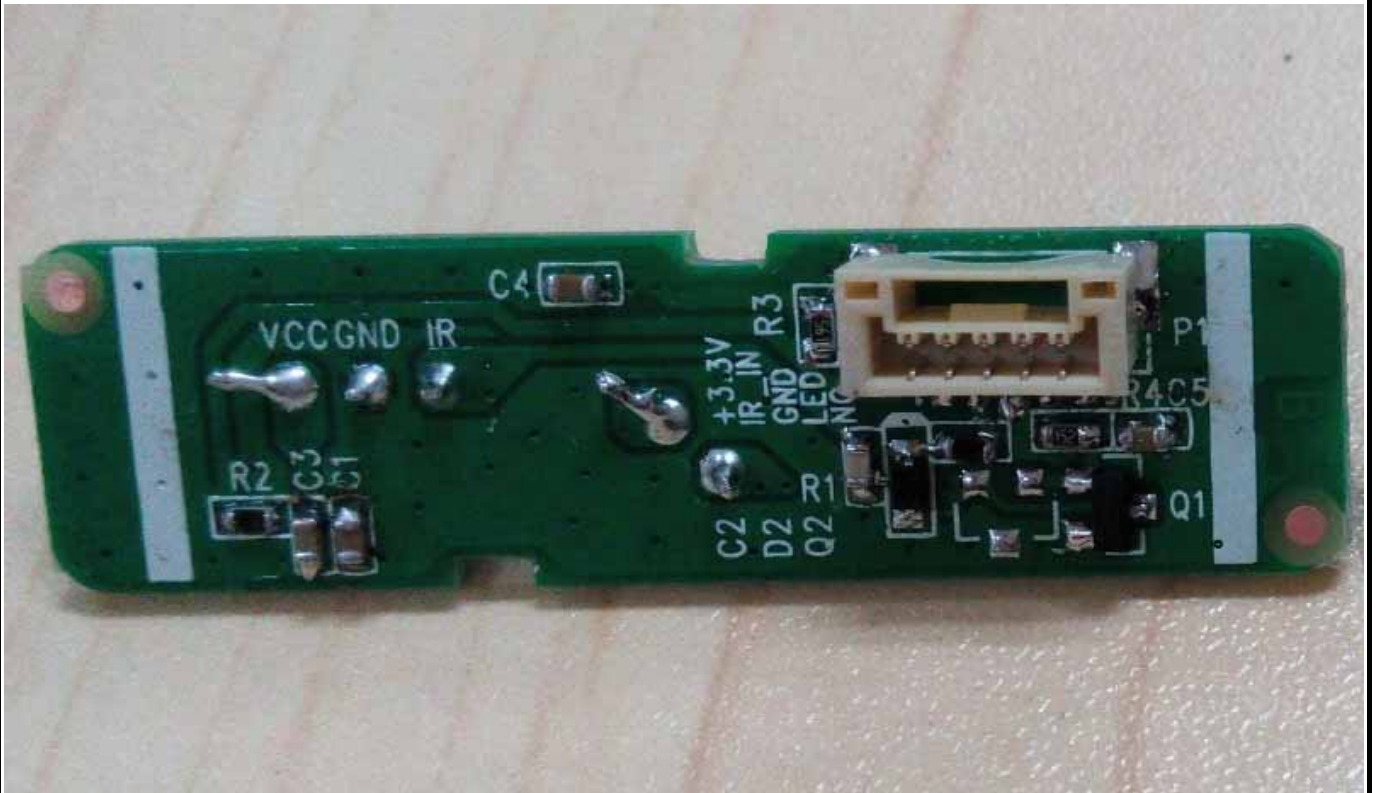




**Figure 19**  
Frontside of the PCB Board



**Figure 20**  
Backside of the PCB Board





**Figure 21**  
Speaker



**Figure 22**  
Speaker

