

Figure 7
Signal Port of the EUT



Figure 8
Inside Configuration of the EUT



Figure 9
Inside Configuration of the EUT

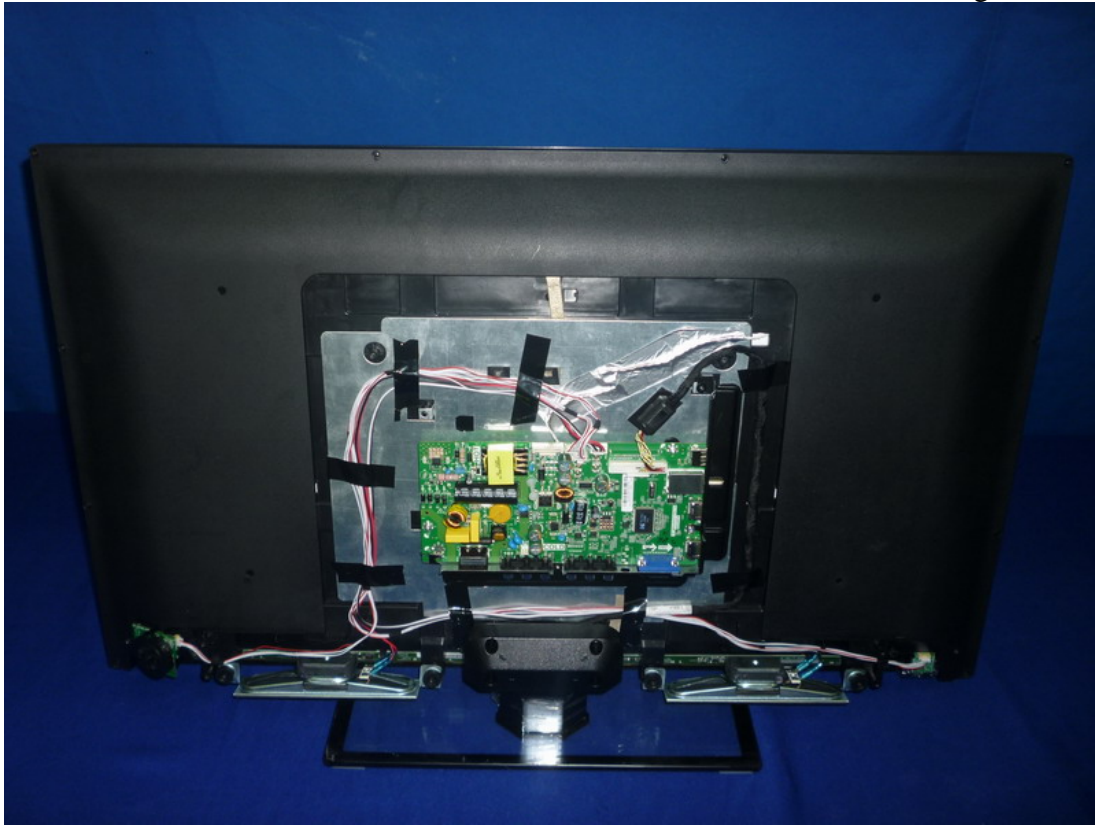


Figure 10
Inside Configuration of the EUT



Figure 11
Inside Configuration of the EUT

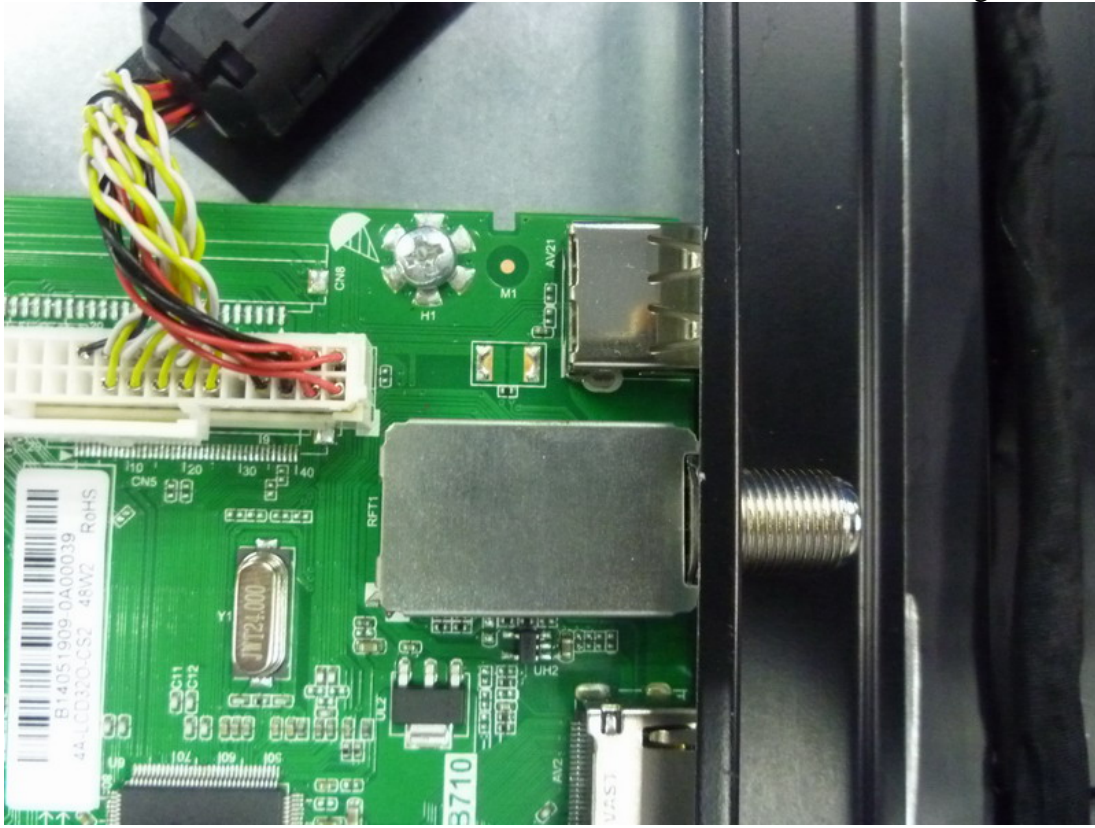


Figure 12
Inside Configuration of the EUT



Figure 13
Inside Configuration of the EUT



Figure 14
Frontside of the LCD Panel



Figure 15
Backside of the LCD Panel



Figure 16
Label of the LCD Panel



Figure 17
Backside of the PCB Board

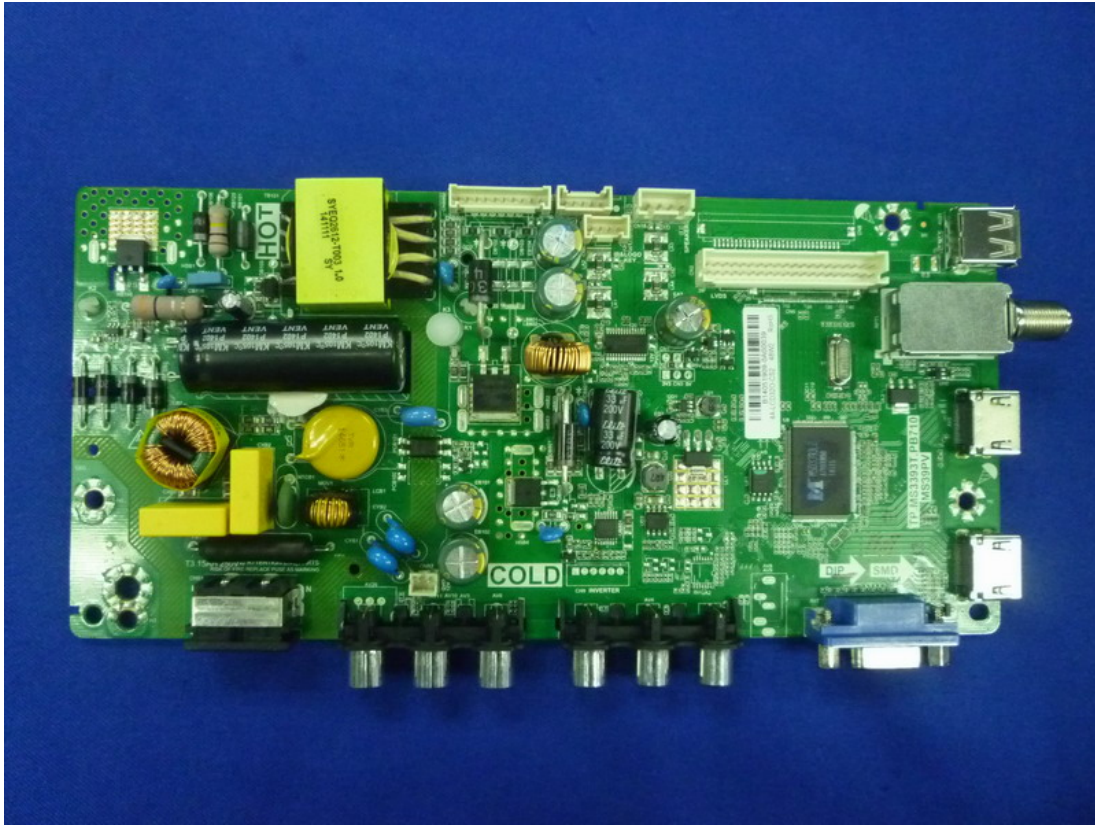


Figure 18
Backside of the PCB Board

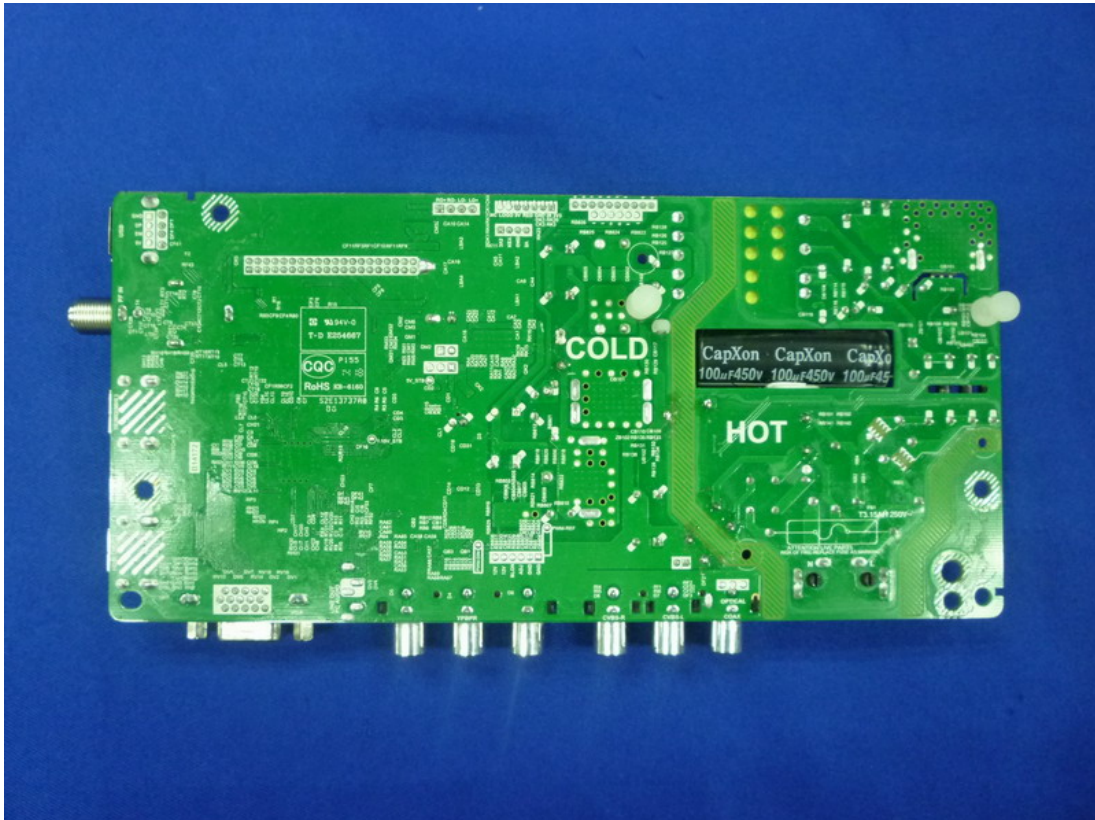


Figure 19
Backside of the PCB Board

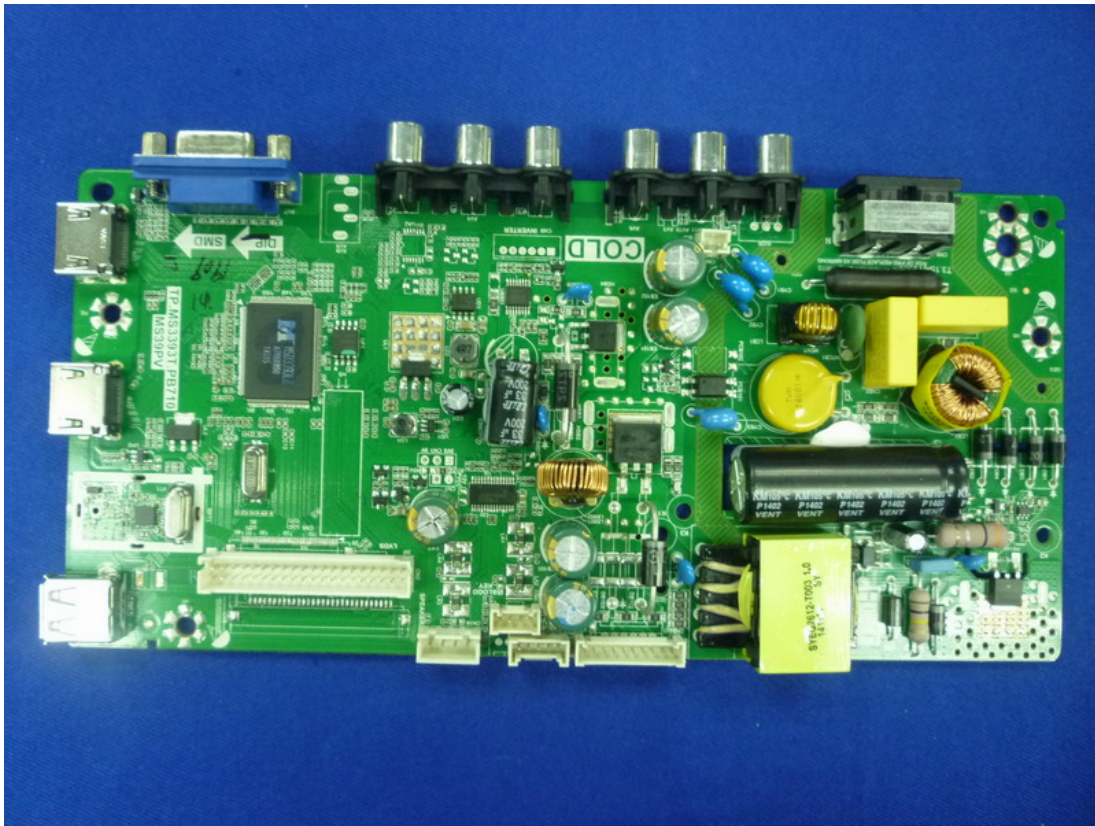


Figure 20
Backside of the PCB Board

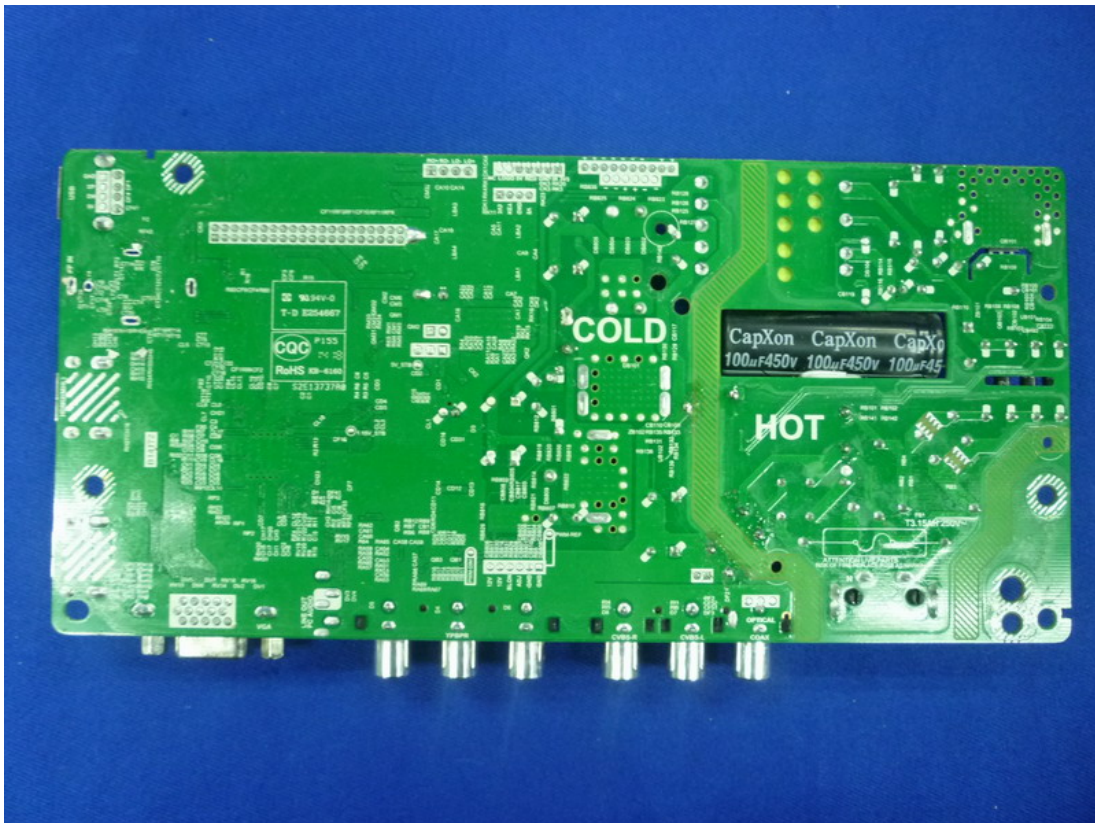


Figure 21
Backside of the PCB Board

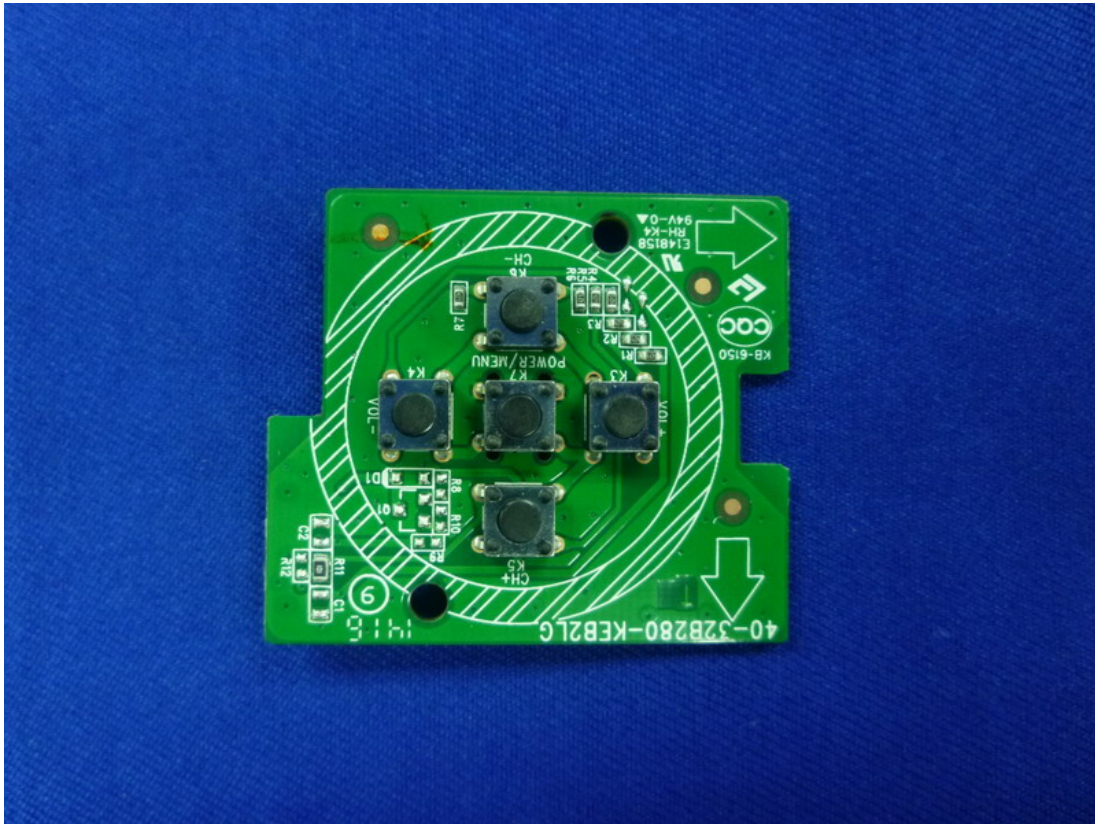


Figure 22
Backside of the PCB Board

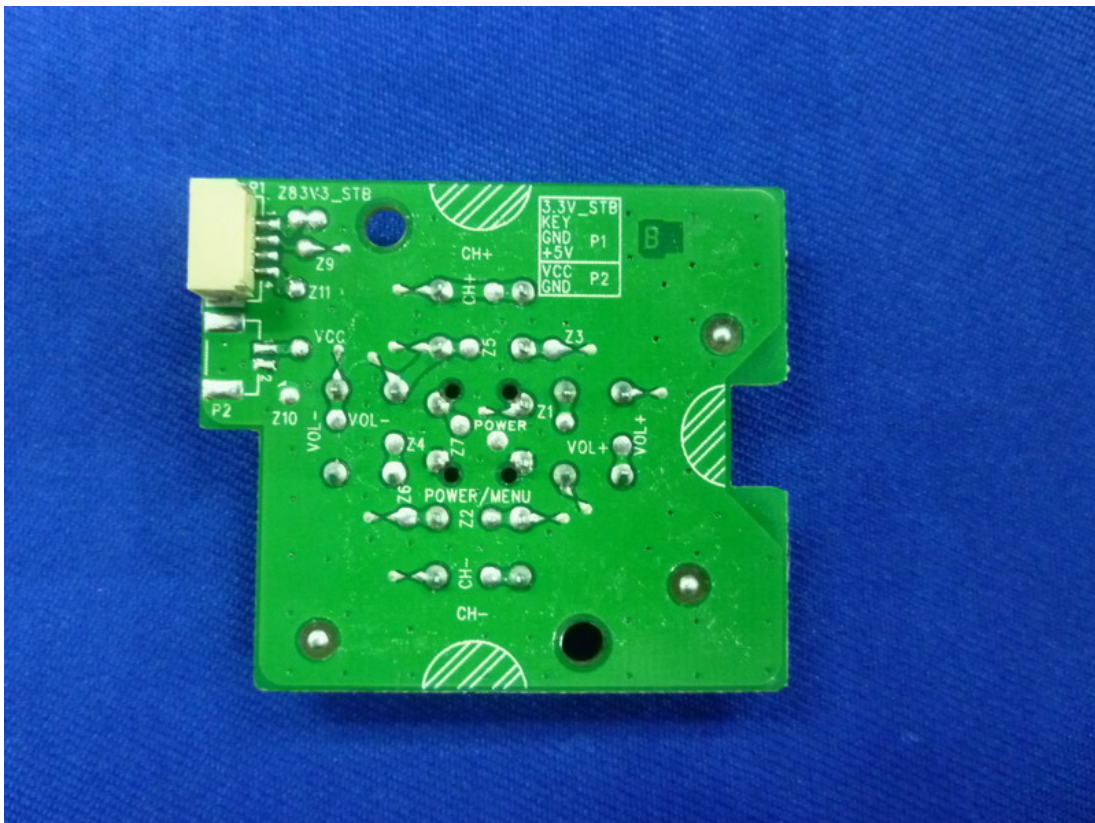


Figure 23
Backside of the PCB Board

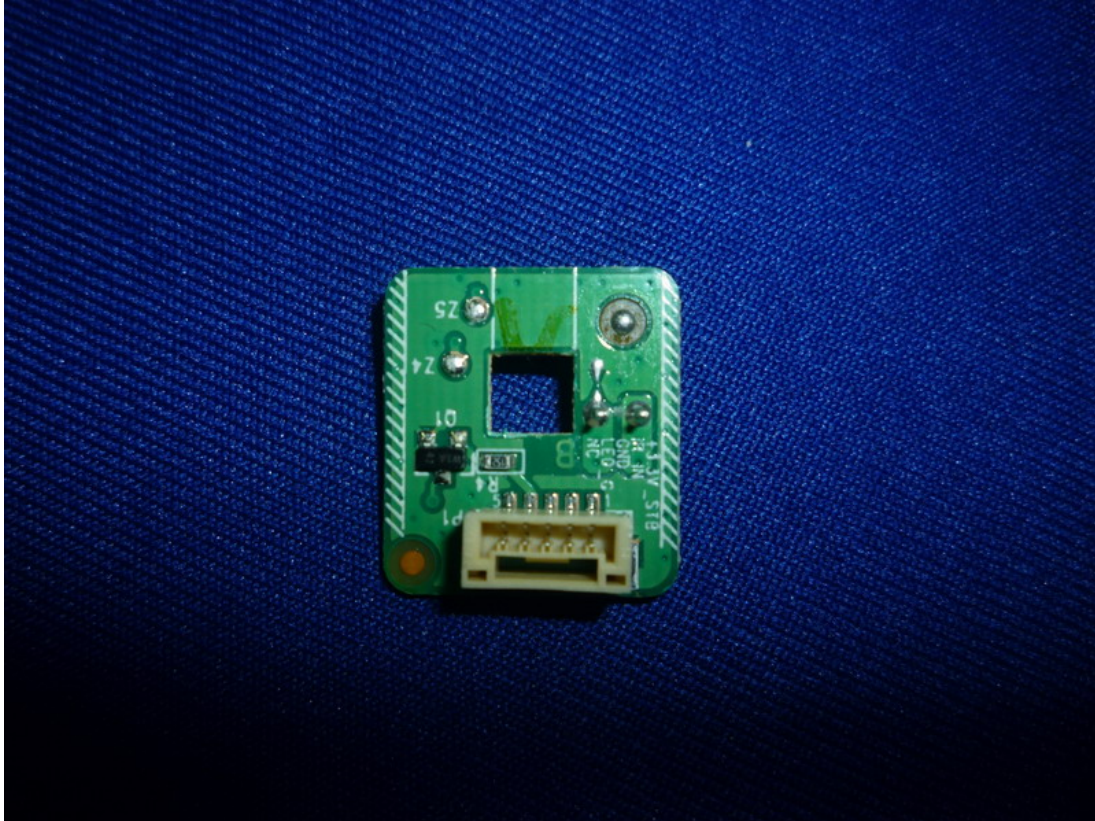
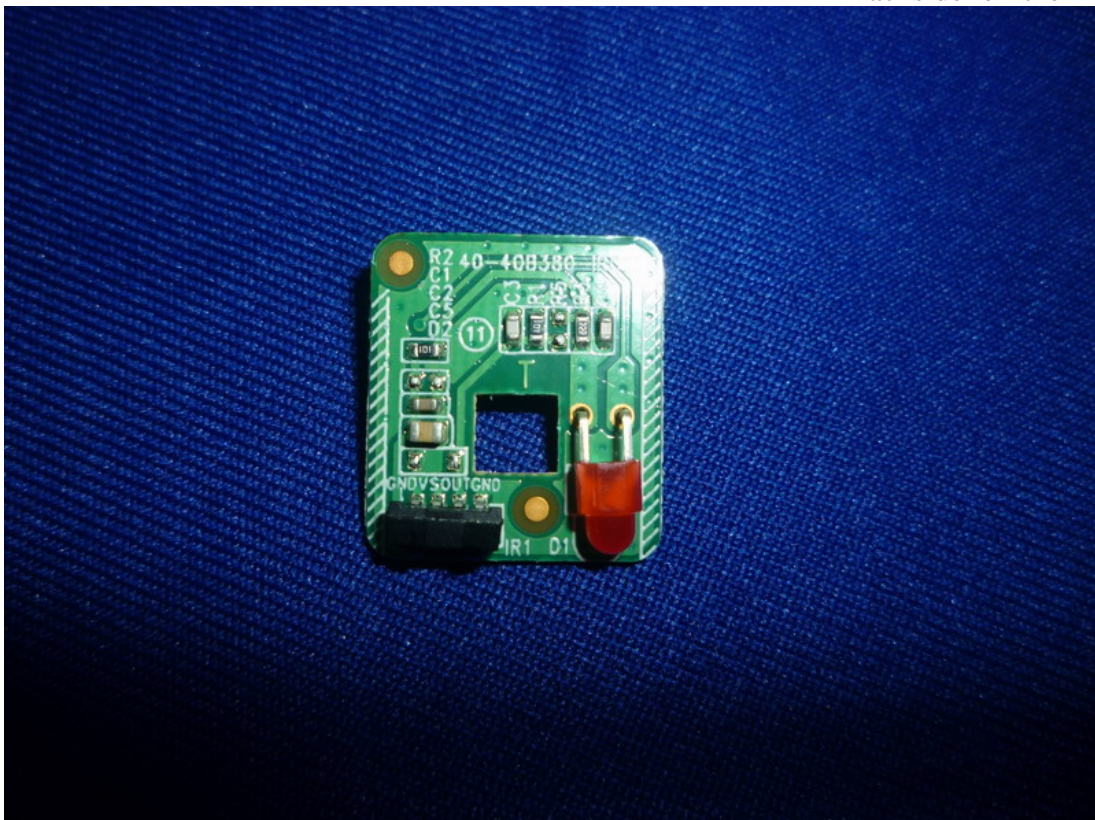


Figure 24
Backside of the PCB Board





FCC ID: W8U32B280

AUDIX Technology (Shenzhen) Co., Ltd.

Page

7-13

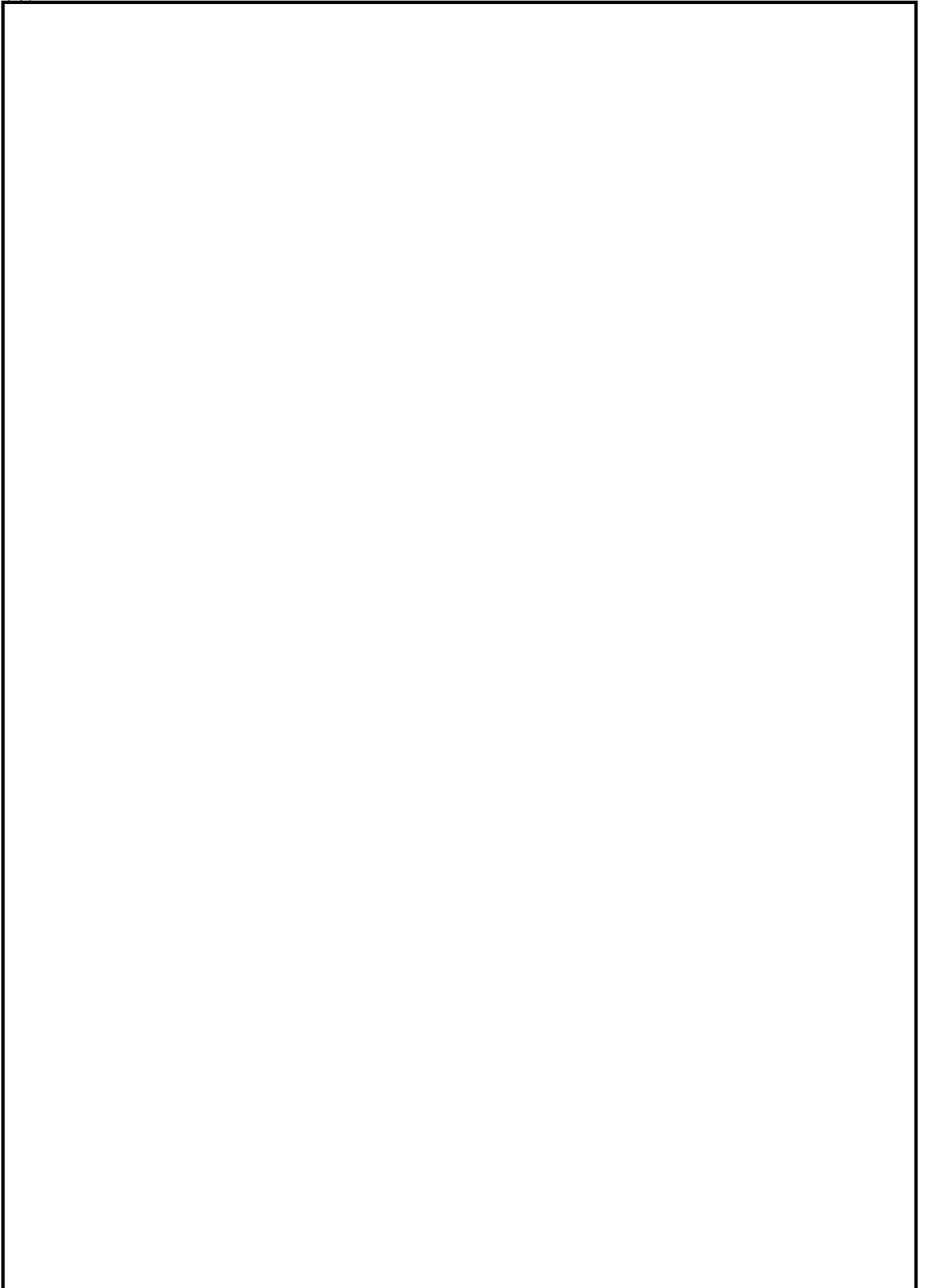


Figure 25
Speaker



Figure 26
Speaker

