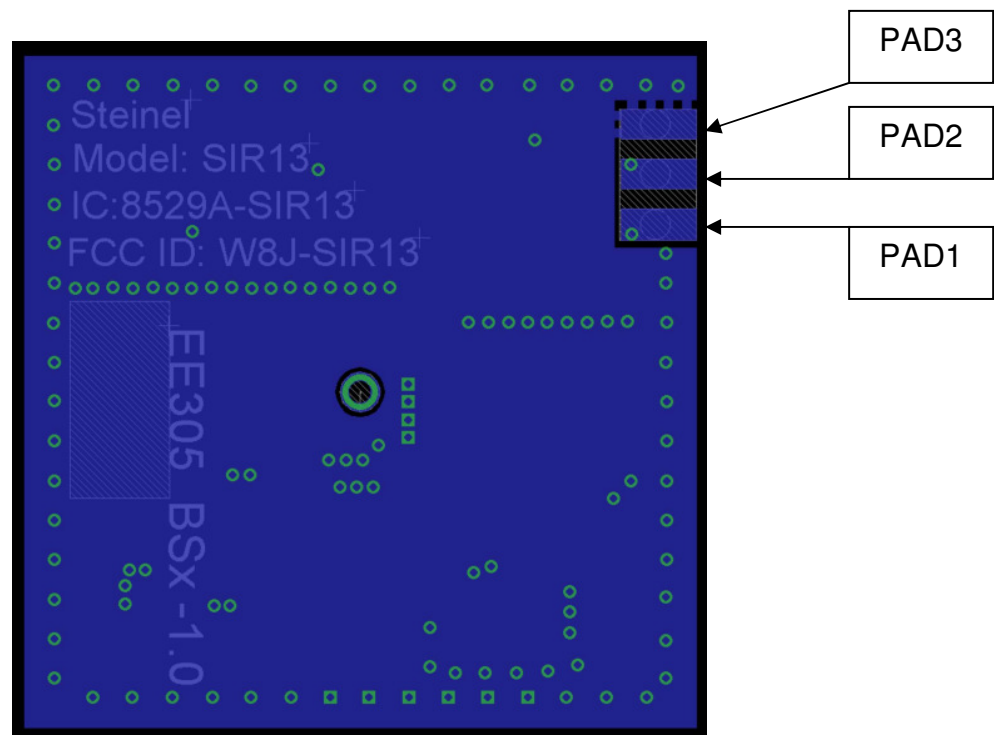




Installation Instructions SIR13

- 1) Provide 5V DC on pad 1 (4.25V-5.75V)
- 2) Provide a low impedance RF and DC ground onto pad 3
- 3) Connect pad 2 (IF) to the μ PC for signal processing
- 4) Operating temperature: 0-50 °C



NOTICE:

This device complies with Part 15 of the FCC Rules and with RSS-210 of Industry Canada.

Operation is subject to the following two conditions:

- (1) this device may not cause harmful interference, and
- (2) this device must accept any interference received, including interference that may cause undesired operation.

NOTICE:

Changes or modifications made to the equipment not expressly approved by Steinel GmbH may void the FCC / IC authorization to operate this equipment.

The use of the transceiver is authorized into mobile or fixed devices taking into account the conditions listed below :

- OEM Integrator may be sure that the end user manual may not contain any information about the way to install or remove the module from the final product.
- Depends on final host configuration additional authorization requirements for the non-transmitter functions on the transmitter module may be required (i.e., Verification, or Declaration of Conformity) OEM integrator is responsible for ensuring that after the module is installed and operational into the host, it continues to be compliant with the Part 15B unintentional radiator requirements.
- The information on label and user manual is required to be incorporated in the user manual of the final system. see 47 CFR15 requirements for more details (e.g. 15.19 / 15.21 / 15.101 / 15.105 / RSS-GEN / ICES)
- Additional label with the words 'Contains FCC ID:W8J-SIR13' and 'Contains IC:8529A-SIR13' shall be applied and visible from the outside of the end product.
- The module must be installed and used in strict accordance with the manufacturer's instructions as described in the user documentation that comes with the product.
- The antenna of the module may not be removed, replaced nor modified. The antenna must not be co-located or operating in conjunction with any other antenna or transmitter. No additional antenna must be used.