

SPECIFICATIONS

All specifications are subject to change without notice

Frequency

Band	FM Frequency
Quality	Hi-Fi stereo
Range	88.1-107.9MHz
Interval	0.1MHz
Stability	10ppm (-10°C → +55°C)
Clutter & Harmonic	<60dB
Effective Range	About 5m

Power

Working voltage	DC 12-24V
USB Output Voltage	DC 5V 2.4A

Audio

Stereo separation	40dB
Frequency response	20Hz-16KHz
Audio Distortion	<0.1% (F=75KHz, f=1KHz)
SNR	>45dB (1KHz 100%)

Physical

Product size	59.0 x 29.0 x 8.0(mm)
Weight	35g

▲ Attention items

- Try to adjust radio to be suitable volume;
- Avoid to use the strong local frequency to make sure better tone;
- Don't try to tear down or repair this products otherwise the warrant will be invalid;
- Don't try to use the non-belong this product's accessory to connect;
- Please monitor when around children;
- This product will not cause any harmful electromagnetic interference.

CE Made in China

USER MANUAL

FM Transmitter



Thank you for purchasing this products.
Please carefully read this instruction manual for properly setup instructions.
Compatible with virtually any smartPhone and mp3/ mp4.

PRODUCTS FEATURES

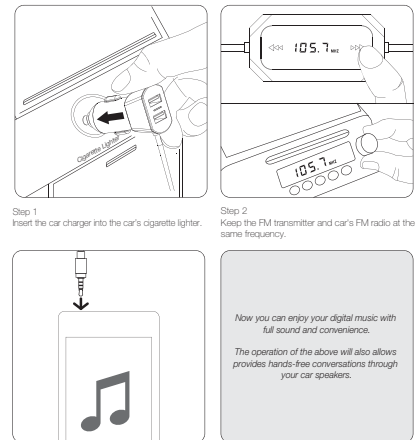
Talk, Charge and Play music on the go!

- Perfect audio transmission function.
- Provides hands-free conversations through your car speakers.
- Full frequency range design effectively avoids interruption.
- Dual USB output charging for Mobile Phones, GPS, and other devices.

DEVICE APPEARANCE



OPERATING GUIDE



Charge

Use USB cable Connect car charger to charging your device (not includes USB cable).

NOTE: This equipment has been tested and found to comply with the limits for a Class B digital device, pursuant to part 15 of the FCC Rules. These limits are designed to provide reasonable protection against harmful interference in a residential installation. This equipment generates, uses and can radiate radio frequency energy and, if not installed and used in accordance with the instructions, may cause harmful interference to radio communications. However, there is no guarantee that interference will not occur in a particular installation. If this equipment does cause harmful interference to radio or television reception, which can be determined by turning the equipment off and on, the user is encouraged to try to correct the interference by one or more of the following measures:

- Reorient or relocate the receiving antenna.
- Increase the separation between the equipment and receiver.
- Connect the equipment into an outlet on a circuit different from that to which the receiver is connected.
- Consult the dealer or an experienced radio/TV technician for help.

This device complies with part 15 of the FCC rules. Operation is subject to the following two conditions:

- (1) this device may not cause harmful interference, and
- (2) this device must accept any interference received, including interference that may cause undesired operation.

Changes or modifications to this unit not expressly approved by the party responsible for compliance could void the user's authority to operate the equipment.