

Bluetooth FM Transmitter USER MANUAL

Model No.: OKIT-F53



Please carefully read this instruction manual for properly set up instructions.

Thank you for purchasing this product.

Product Features

- Power supply from car cigarette lighter;
 - Bluetooth hands-free, one-touch answering
 - Wireless music playback
 - FM frequency, Bluetooth pairing
- USB output for powering mobile phones or other devices
- Compatible with most of Smart Phones / iPhone / ... and digital products that use a USB charging cable (not include USB cable).

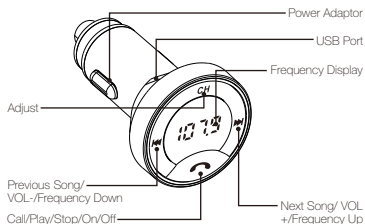
Specifications

All specifications are subject to change without notice.

Power

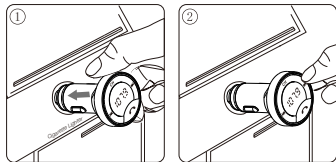
Input Voltage:	DC 12V~24V
Output Current:	5V 2.4A
Working Temperature:	-10 ~ +55 °C
FM emission distance:	About 5m
FM frequency range:	88.1-107.9MHz
Maximum call duration:	1999s

Component introduction



Operating Guiding

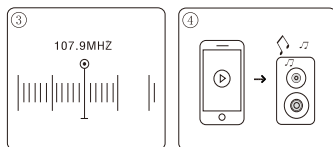
1. Insert the car charger into the cigarette lighter. The indicator light is blue and shows the FM frequency.
2. Adjust the FM frequency by rotating the "Volume/Frequency /Up/Down" encoder to make the car charging frequency match the car radio frequency.



3. Before pairing with the mobile phone Bluetooth, see if the car charging blue indicator light flashes, and the blue indicator light flashes to indicate that the current unpaired connection. The mobile phone Bluetooth search "OKT-F53" is paired again, no password is required for pairing, and the blue

indicator light is on after the pairing is successful.

4. Open the mobile music app, the car audio starts to play music normally.



Precautions

- Don't put the this product on direct intense sunlight;
- Don't put this product in liquid or store in moist environment;
- Don't touch fire or smoking or naked light;
- Don't beat ,throw or press heavy as the behavior will becaused damage;
- Please use dry cloth without chemical agent;
- If you don't use this product for the moment ,please put it on dry or ventilated place to avoid to flammable and chemical agent.

⚠ WARNING

Don't try to tear down or repair this product otherwise
the warrant will be invalid;

Please monitor when around children.

Made in China

NOTE: This equipment has been tested and found to comply with the limits for a Class B digital device, pursuant to part 15 of the FCC Rules. These limits are designed to provide reasonable protection against harmful interference in a residential installation. This equipment generates uses and can radiate radio frequency energy and, if not installed and used in accordance with the instructions, may cause harmful interference to radio communications. However, there is no guarantee that interference will not occur in a particular installation. If this equipment does cause harmful interference to radio or television reception, which can be determined by turning the equipment off and on, the user is encouraged to try to correct the interference by one or more of the following measures:

- Reorient or relocate the receiving antenna.
- Increase the separation between the equipment and receiver.
- Connect the equipment into an outlet on a circuit different from that to which the receiver is connected.
- Consult the dealer or an experienced radio/TV technician for help

Changes or modifications not expressly approved by the party responsible for compliance could void the user's authority to operate the equipment.

This device complies with Part 15 of the FCC Rules. Operation is subject to the following two conditions:

- (1) this device may not cause harmful interference, and
- (2) this device must accept any interference received, including interference that may cause undesired operation.