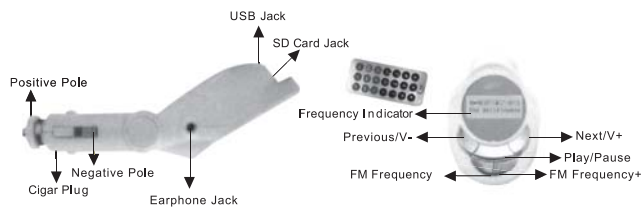


MP3 WIRELESS FM MODULATOR 12V/24V Wireless

- SD card, USB.
- 206 FM channels.
- volume control.
- 24 votl wireless transmission.
- LCD show the volume and ordinal number of song.

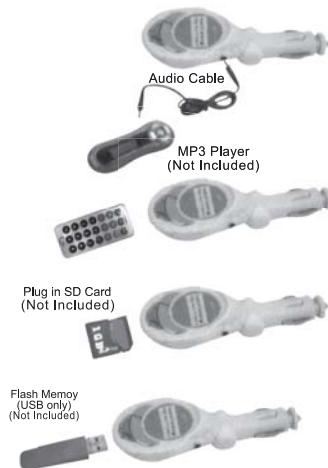


Turn your car stereo on and tune the frequency the same as your car MP3 player. Press the play button of the Car MP3 player to enjoy your music.

Save MP3 file to U Port. Plug in U Port.

Plug car MP3 player into cigarette lighter of your car directly. Plug USB Drive into car MP3 player.

Plug in SD Card. Enjoy your favourite music.



CE FC Made in China

Apply to Flash Drive and MP3 PLAYER

FCC ID:W8D-C-1

This device complies with Part 15 of the FCC Rules. Operation is subject to the following two conditions: (1) this device may not cause harmful interference, and (2) this device must accept any interference received, including interference that may cause undesired operation.

changes or modifications not expressly approved by the party responsible for compliance could void the user's authority to operate the equipment.

NOTE: This equipment has been tested and found to comply with the limits for a Class B digital device, pursuant to Part 15 of the FCC Rules. These limits are designed to provide reasonable protection against harmful interference in a residential installation. This equipment generates, uses and can radiate radio frequency energy and, if not installed and used in accordance with the instructions, may cause harmful interference to radio communications. However, there is no guarantee that interference will not occur in a particular installation. If this equipment does cause harmful interference to radio or television reception, which can be determined by turning the equipment off and on, the user is encouraged to try to correct the interference by one or more of the following measures:

- Reorient or relocate the receiving antenna.
- Increase the separation between the equipment and receiver.
- Connect the equipment into an outlet on a circuit different from that to which the receiver is connected.
- Consult the dealer or an experienced radio/TV technician for help.