

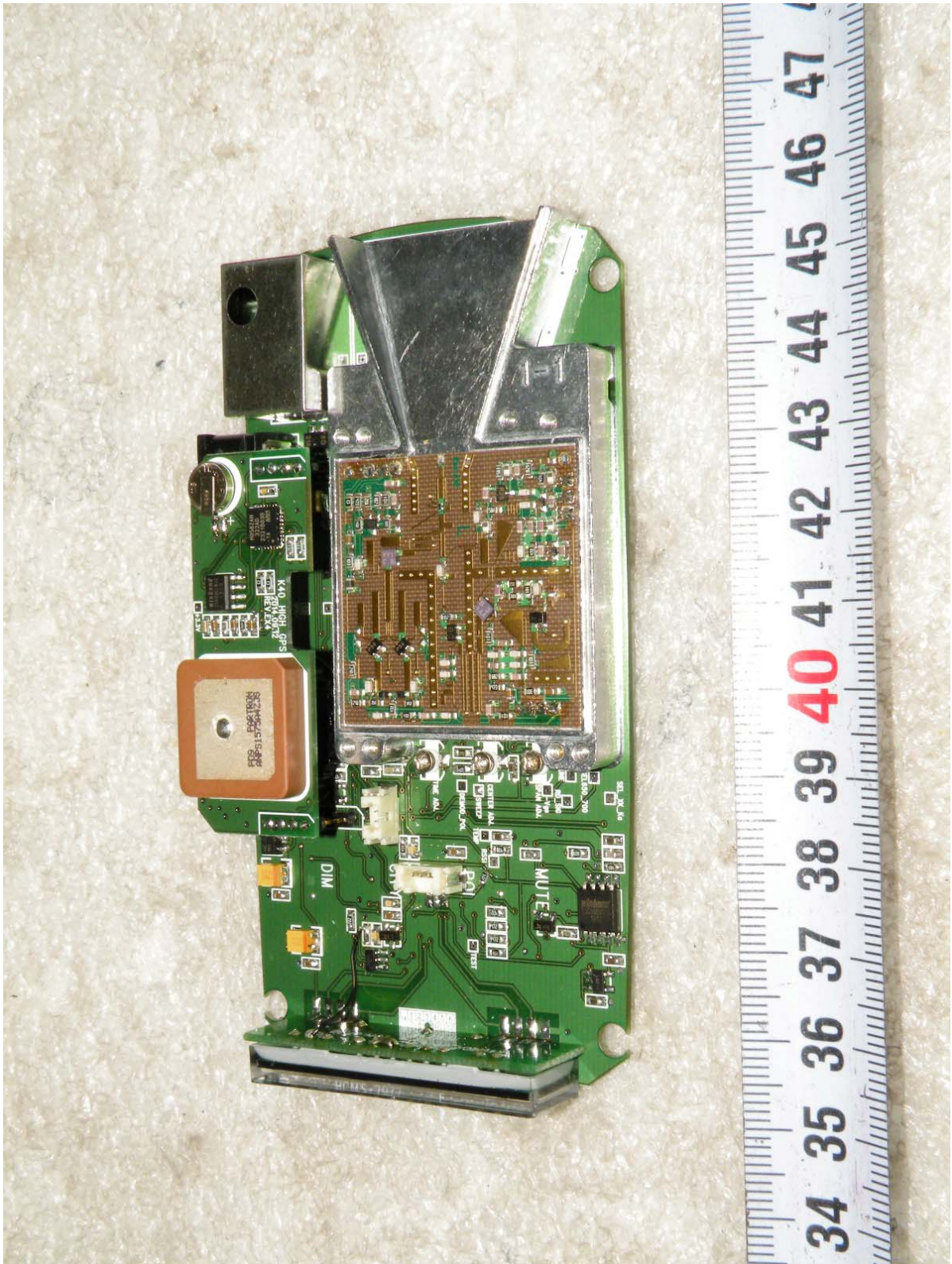
Inside view of EUT



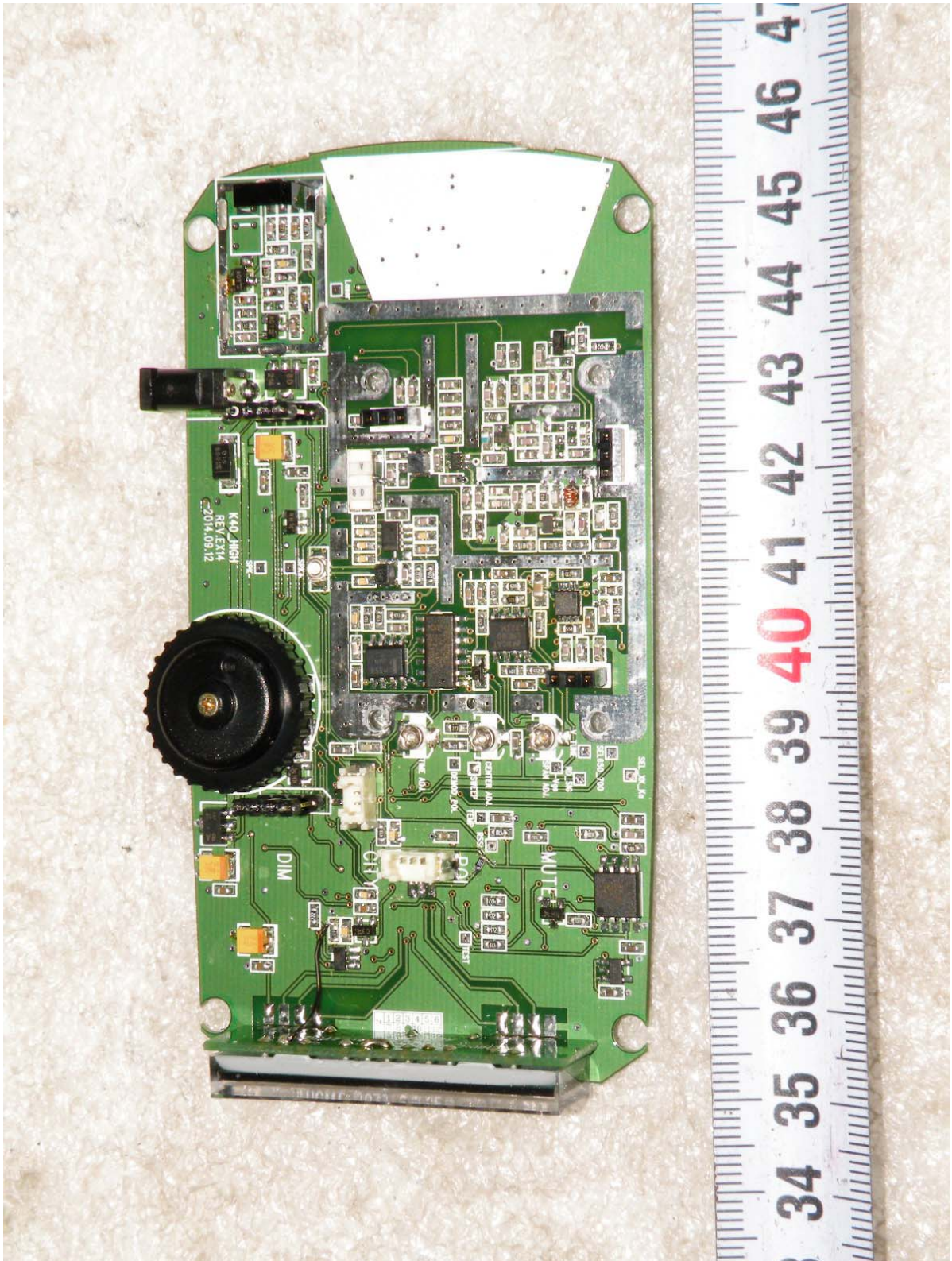
Top side view of main board #1



Top side view of main board #1-1 (without case)



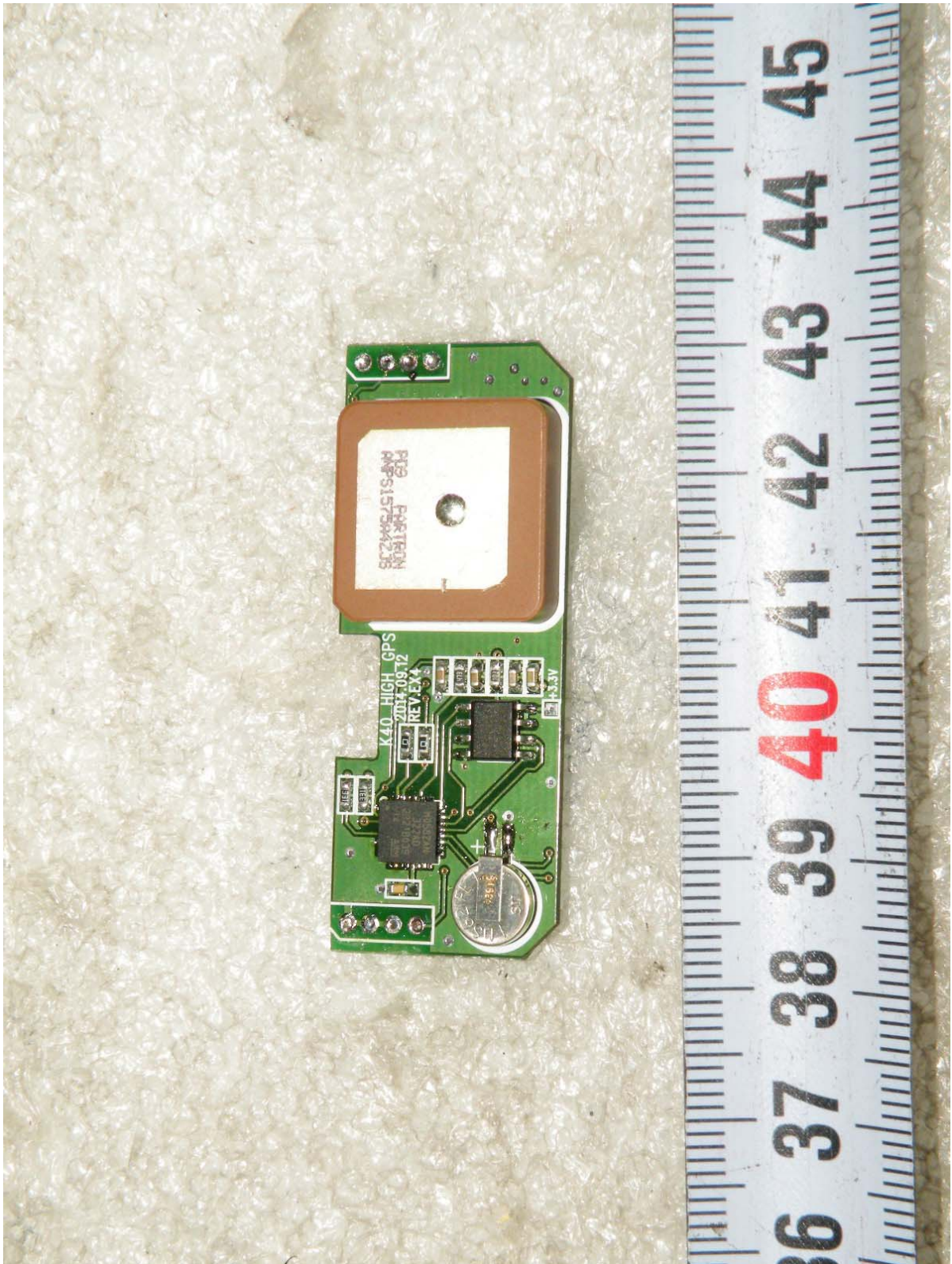
Top side view of main board #1-2 (without case and GPS board)



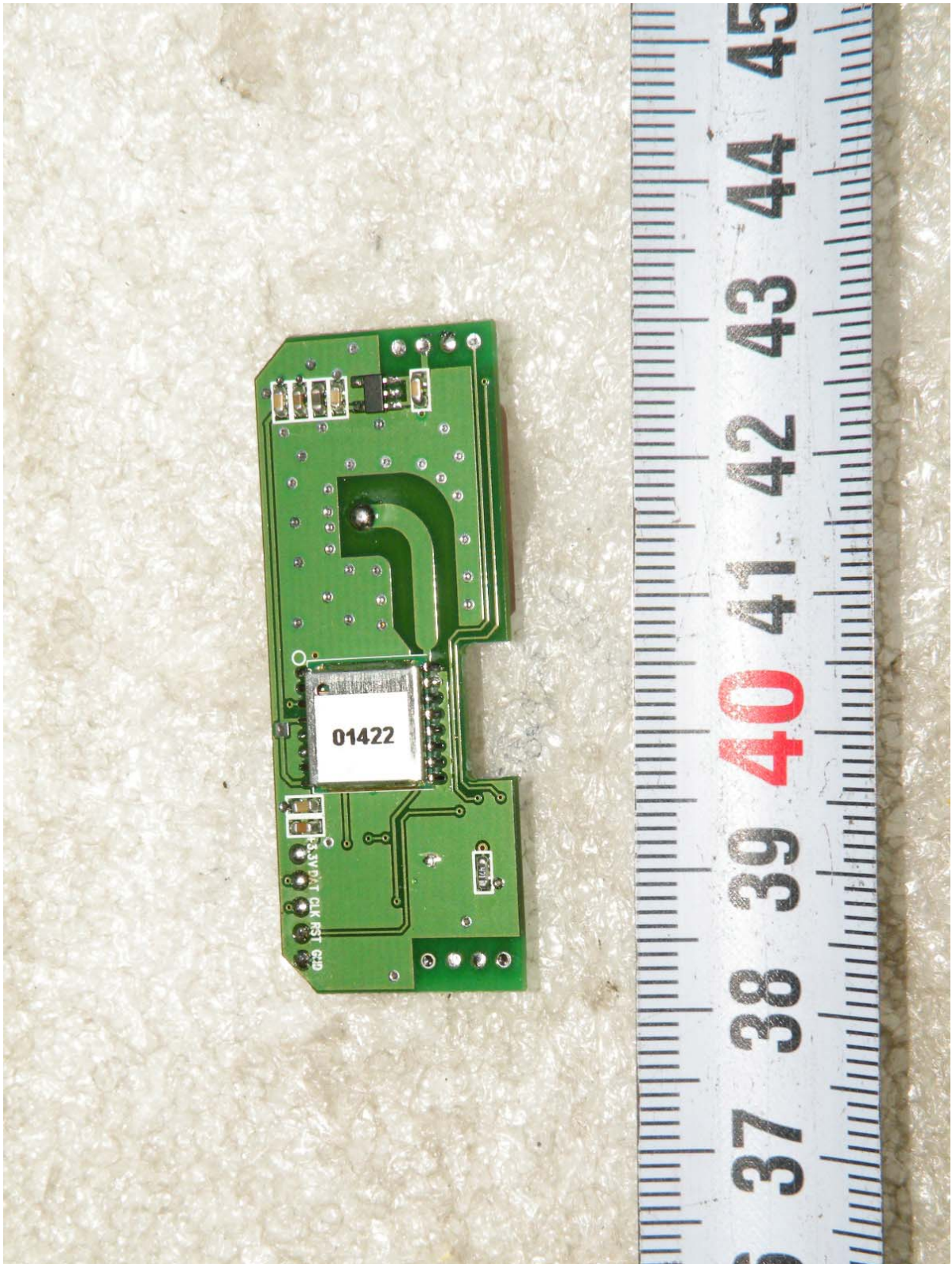
Bottom side view of main board



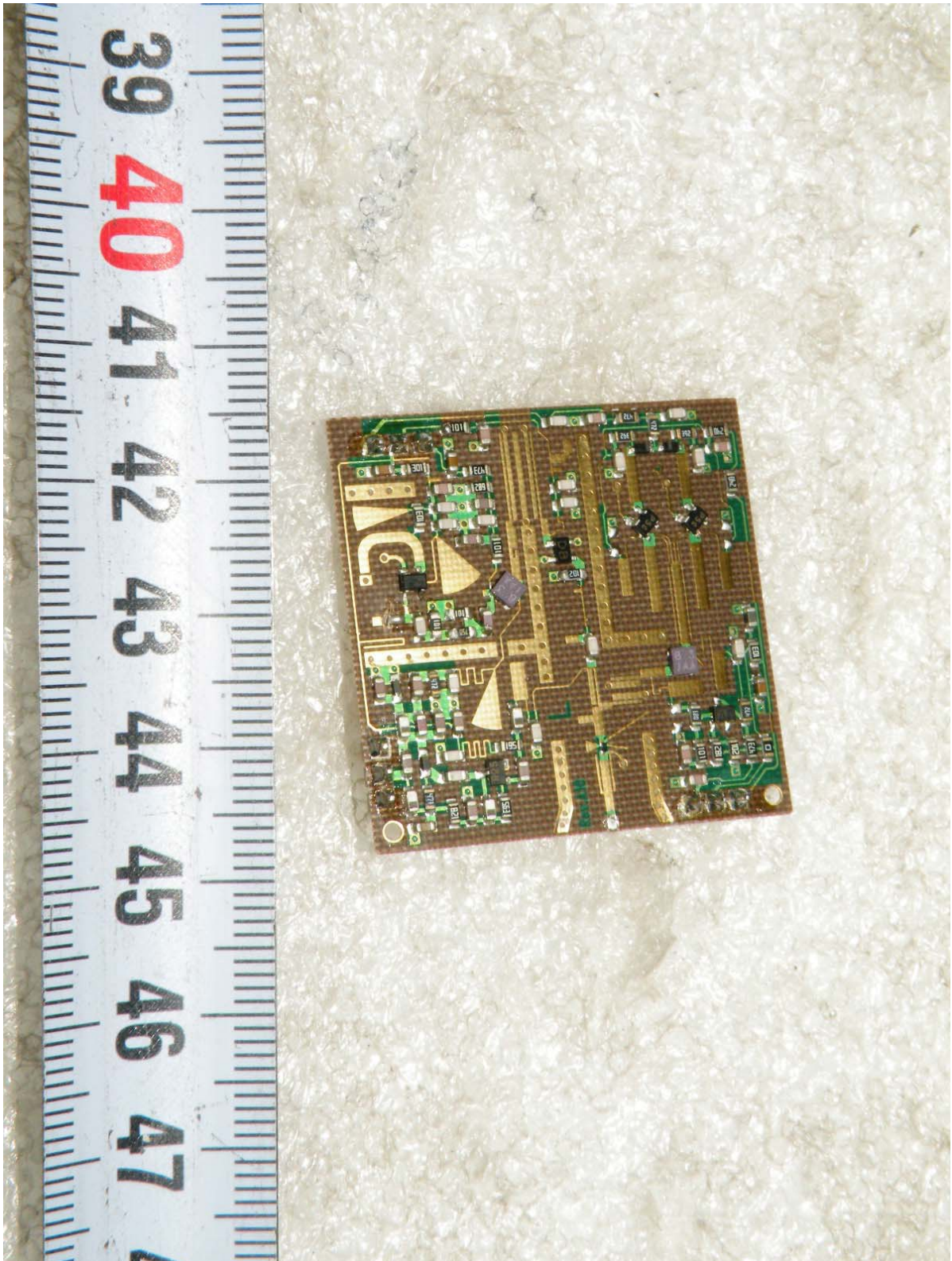
Top side view of GPS board



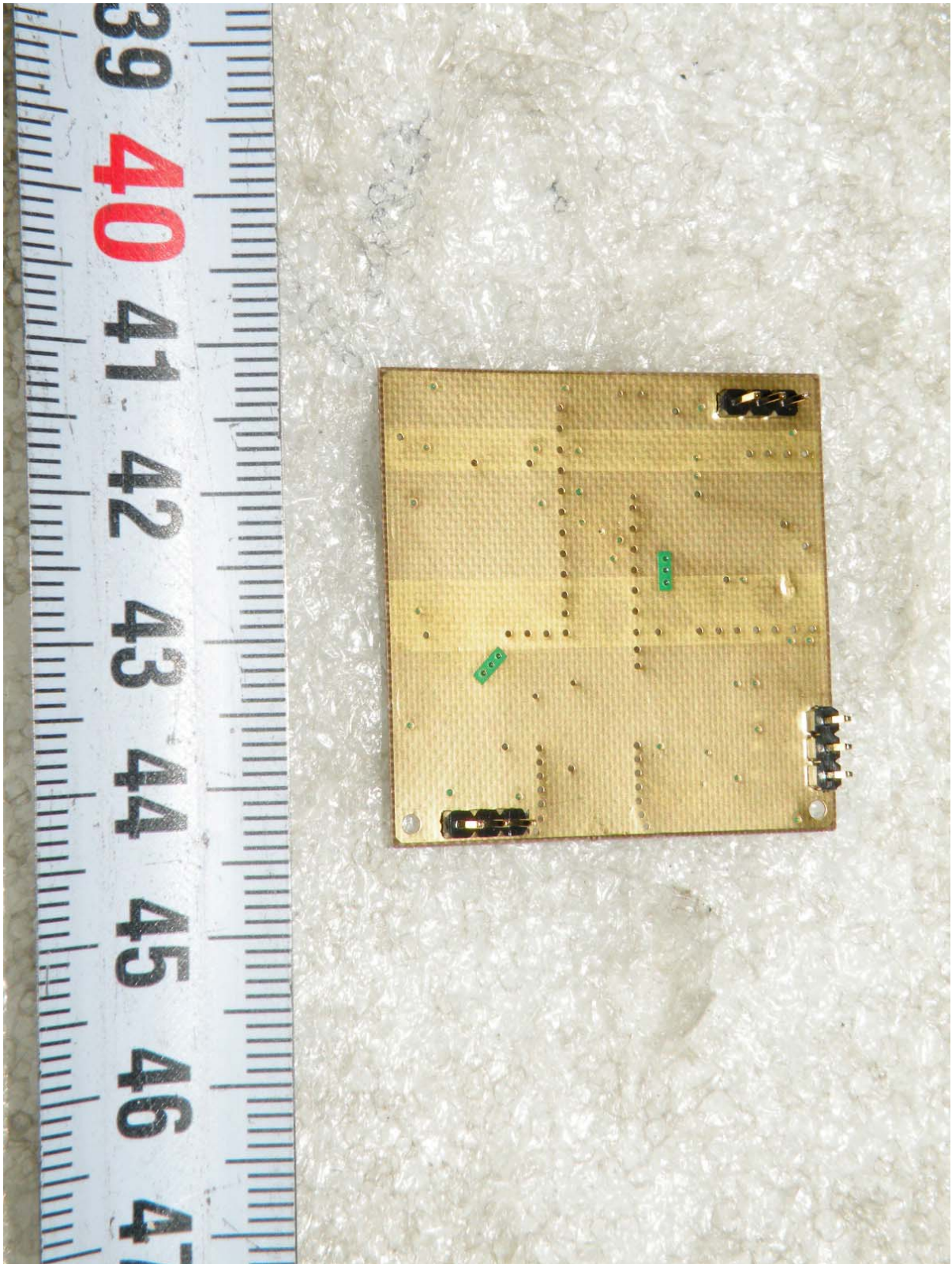
Bottom side view of GPS board



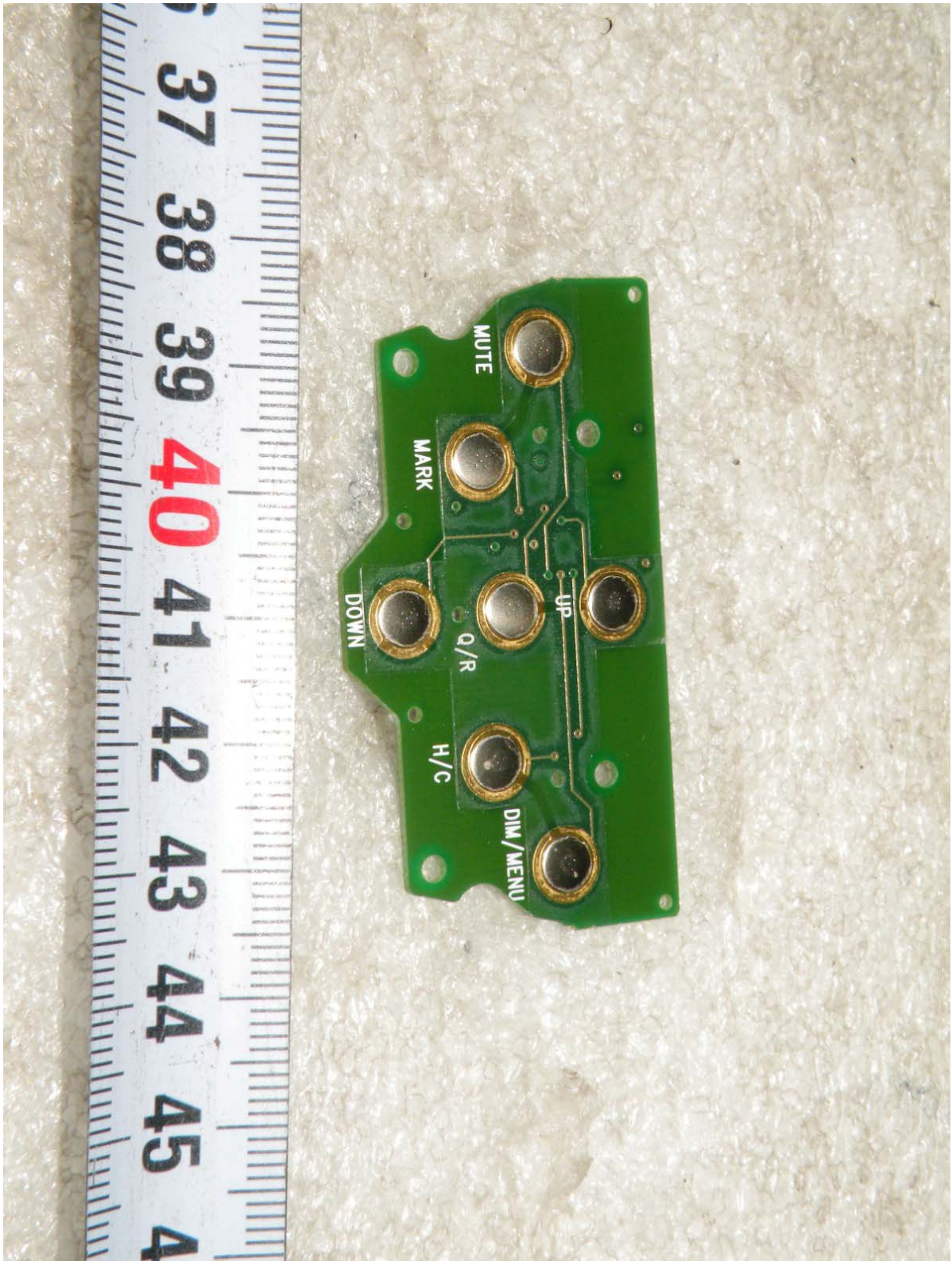
Top side view of Antenna main board



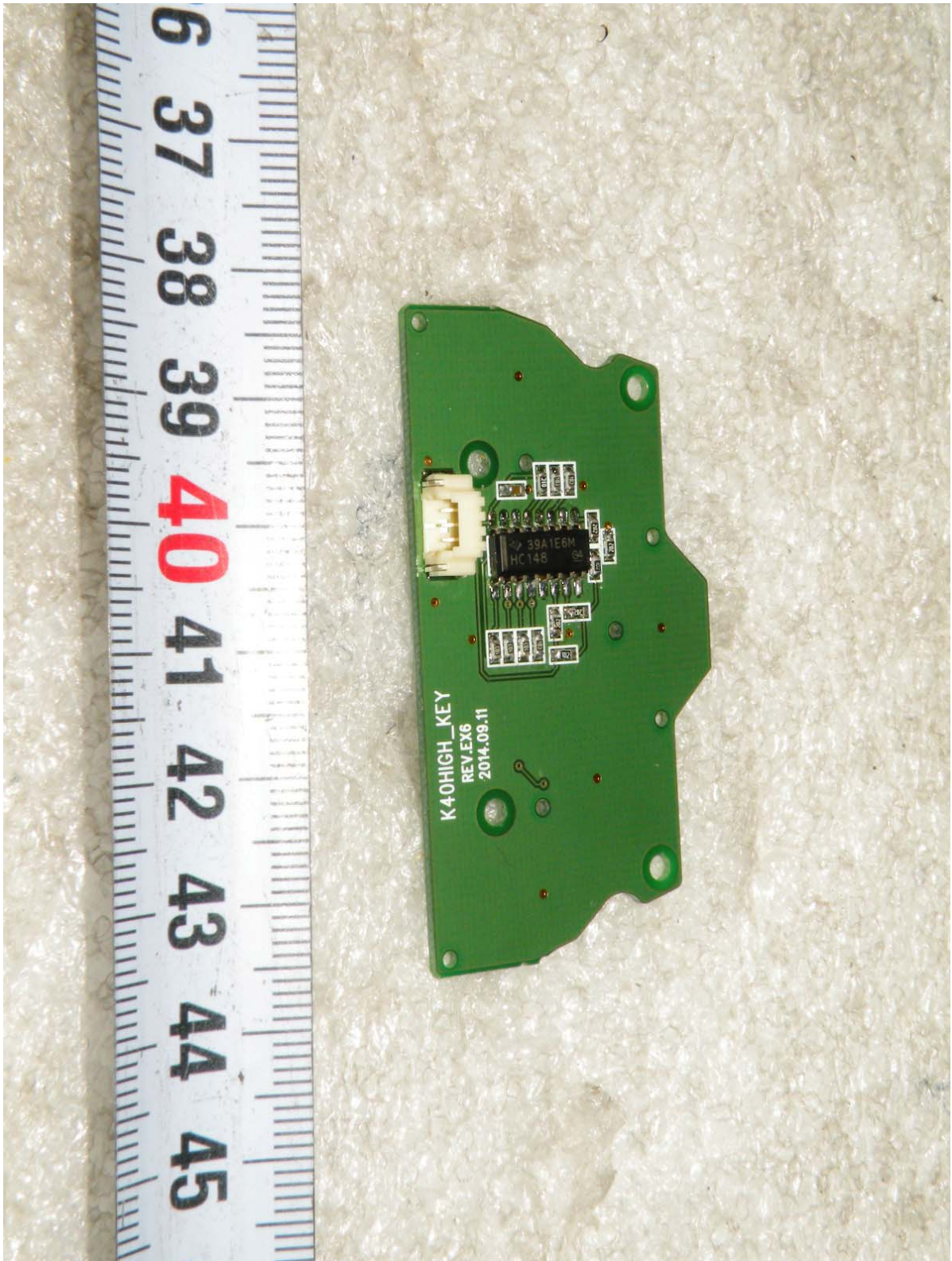
Bottom side view of Antenna main board



Top side view of key board



Bottom side view of key board



View of speaker

