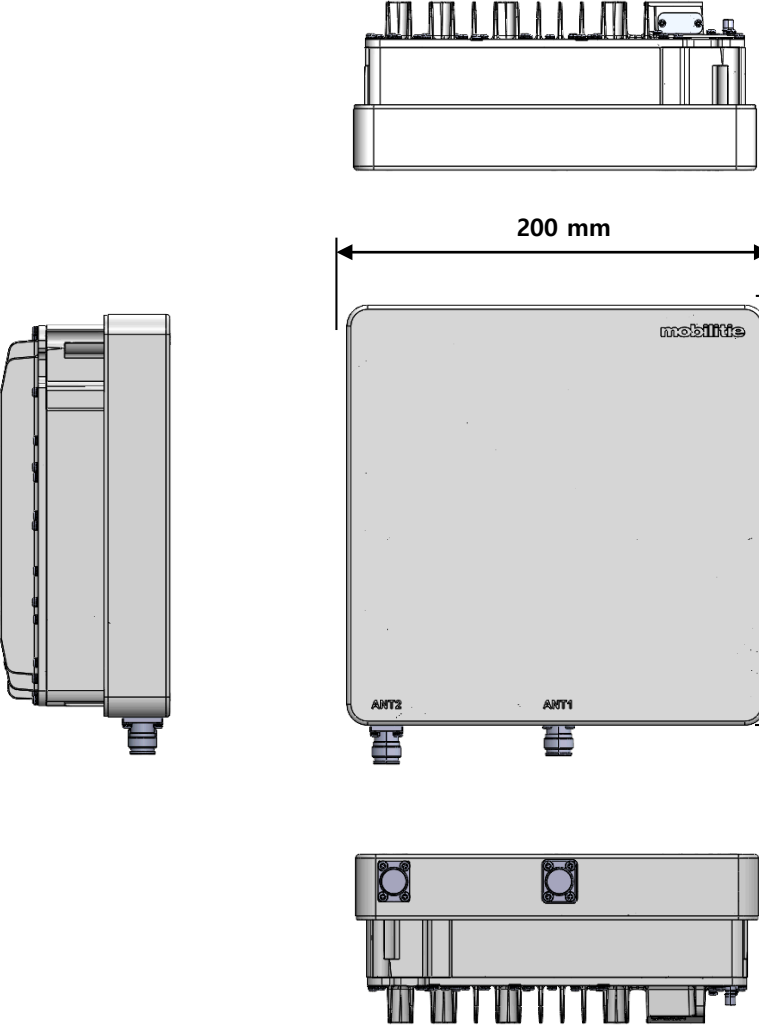


# eROU\_67835L2\_X



MODEL : eROU\_67835L2\_X  
RATING : 39-57V  $\bar{\square}$  , 0.82-0.58A  
S/N :

SOLID 01110M666G3221100029

**SOLiD ALLIANCE™**

FCC ID : W6UEROU67835L2  
IC : 9354A-EROU67835L2

Made in KOREA  
**SOLiD, Inc**

10,9th Floor, SOLiD Space, 220, Pangyoeyeok-ro, Bundang-gu, Seongnam-si, Gyeonggi-do, Republic of Korea, 13493

This device complies with part 15 of the FCC Rules. Operation is subject to the following two conditions:  
(1) This device may not cause harmful interference, and (2) this device must accept any interference received, including interference that may cause undesired operation.

Part 90 and Part 20 Signal Boosters  
WARNING: This is NOT a CONSUMER device. It is designed for installation by FCC LICENSEES and QUALIFIED INSTALLERS. You MUST have an FCC LICENSE or express consent of an FCC Licensee to operate this device. You MUST register Part 90 Class B signal boosters (as defined in 47 CFR 90.219) online at [www.fcc.gov/signal-boosters/registration](http://www.fcc.gov/signal-boosters/registration). Unauthorized use may result in significant forfeiture penalties, including penalties in excess of \$100,000 for each continuing violation.

THIS IS A 90.219 CLASS B DEVICE

WARNING : This is NOT a CONSUMER device. It is designed for installation by an installer approved by an ISSED licensee. You MUST have an ISSED LICENCE or the express consent of an ISSED licensee to operate this device.

UL US E324601 I.T.E.  
LISTED  
CAN ICES-3(A)/NMB-3(A)

