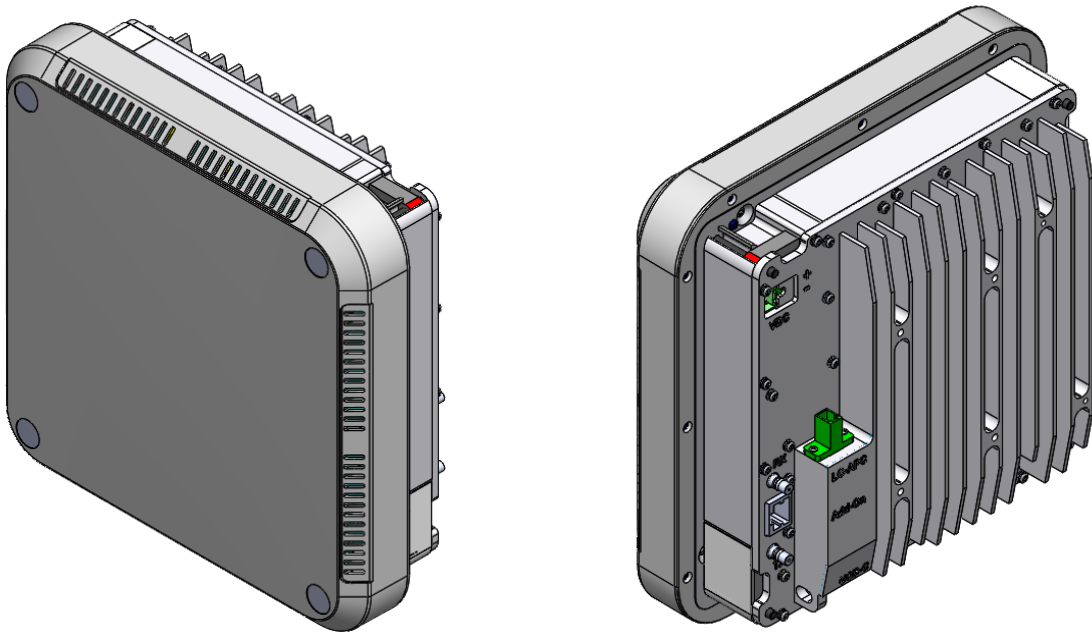


# Alliance\_eROU

## User Manual

---



### Document Reference:

Version:	V1.0
Document Status:	Release 1
Issue Date:	July 21, 2021
Author:	Dong-Kwon Yeo
Department:	R&D Division Team 2
Authorizing Manager:	hyun-suk Chae

---

## REVISION HISTORY

Version	Issue Date	No. of Pages	Initials	Details of Revision Changes
V 1.0	July 21, 2021		Original	

### Technical Support

SOLiD serial numbers must be available to authorize technical support and/or to establish a return authorization for defective units. The serial numbers are located on the back of the unit, as well as on the box in which they were delivered. Additional support information may be obtained by accessing the SOLiD Tehcnology, Inc. website at [www.solid.co.kr](http://www.solid.co.kr) or send email at [sjkim@solid.co.kr](mailto:sjkim@solid.co.kr)

This manual is produced by Global Business Division Business Team Printed in Korea.

---

## Contents

<b>Section1</b>	<b><i>Safety &amp; Certification Notice .....</i></b>	<b><i>4</i></b>
<b>Section2</b>	<b><i>System configuration and Functions .....</i></b>	<b><i>8</i></b>
<b>2.1</b>	<b>eROU(edge Remote Optic Unit) .....</b>	<b>8</b>
<b>2.1.1</b>	<b>Specifications of eROU .....</b>	<b>9</b>
<b>2.1.2</b>	<b>Port on eROU .....</b>	<b>10</b>
<b>2.1.2.1</b>	<b>Functions .....</b>	<b>10</b>
<b>Section3</b>	<b><i>System Installation .....</i></b>	<b><i>11</i></b>
<b>3.1</b>	<b>eROU Installation .....</b>	<b>11</b>
<b>3.1.1</b>	<b>eROU Enclosure installation .....</b>	<b>11</b>
<b>3.1.2</b>	<b>eROU(Internal Antenna) Mount Installation_ Case .1 .....</b>	<b>13</b>
<b>3.1.3</b>	<b>eROU(Internal Antenna) Mount Installation_ Case .2 .....</b>	<b>14</b>
<b>3.1.4</b>	<b>eROU(Internal Antenna) Mount Installation_ Case .3 .....</b>	<b>14</b>
<b>3.1.5</b>	<b>eROU(External Antenna) Mount Installation.....</b>	<b>15</b>
<b>3.1.6</b>	<b>Installation Cable Gland .....</b>	<b>16</b>
<b>3.1.7</b>	<b>Power cabling .....</b>	<b>17</b>
<b>3.1.8</b>	<b>Ground cabling .....</b>	<b>17</b>

# ***Section1***

## **Safety & Certification Notice**

**“Only qualified personnel should handle the DAS equipment. Any person involved in installation or service of the DAS should understand and follow these safety guidelines.”**

- Obey all general and regional installation and safety regulations relating to work on high voltage installations, as well as regulations covering correct use of tools and personal protective equipment.
- The power supply unit in repeaters contains dangerous voltage level, which can cause electric shock. Switch the mains off prior to any work in such a repeater. Any local regulations are to be followed when servicing repeaters.
- eROU equipment is exclusive to the indoor.
- Use this unit only for the purpose specified by the manufacturer. Do not carry out any modifications or fit any spare parts which are not sold or recommended by the manufacturer. This could cause fires, electric shock or other injuries.
- Any DAS system or Fiber BDA will generate radio (RF) signals and continuously emit RF energy. Avoid prolonged exposure to the antennas. SOLiD recommends maintaining a 40 cm minimum clearance from the antenna while the system is operating.
- Do not operate this unit on or close to flammable materials, as the unit may reach high temperatures due to power dissipation.
- Do not use any solvents, chemicals, or cleaning solutions containing alcohol, ammonia, or abrasives on the DAS equipment. Alcohol may be used to clean fiber optic cabling ends and connectors.
- To prevent electrical shock, switch the main power supply off prior to working with the DAS System or Fiber BDA. Never install or use electrical equipment in a wet location or during a lightning storm.
- Do not look into the ends of any optical fiber or directly into the optical transceiver of any digital unit. Use an optical spectrum analyzer to verify active fibers. Place a protective cap over any radiating transceiver or optical fiber connector to avoid the potential of radiation exposure.
- Allow sufficient fiber length to permit routing without severe bends.
- For pluggable equipment, make sure to install the socket outlet near the equipment so that it is easily accessible.
- A readily accessible disconnect device shall be incorporated external to the equipment.
- This power of this system shall be supplied through wiring installed in a normal building.

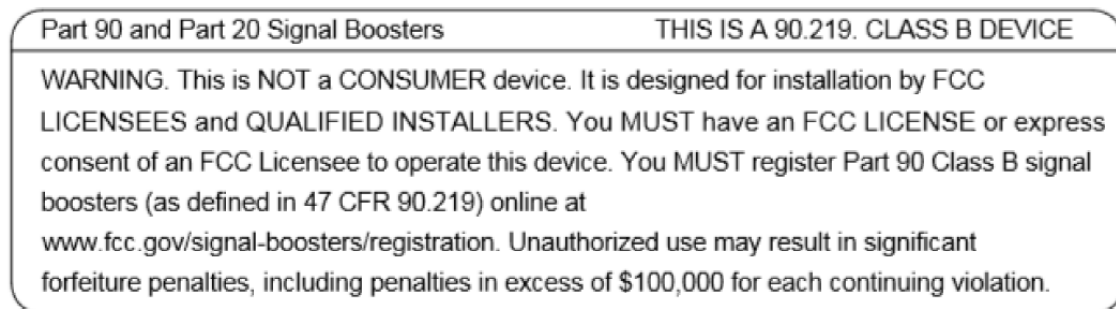
If powered directly from the mains distribution system, it shall be used additional protection, such as

overvoltage protection device

- Only 50 ohm rated antennas, cables and passive equipment shall be used with this remote. Any equipment attached to this device not meeting this standard may cause degradation and unwanted signals in the bi-directional system. All components connected to this device must operate in the frequency range of this device.
- Only 50 ohm rated antennas, cables and passive components operating from 150 - 3 GHz shall be used with this device.
- The head end unit must always be connected to the Base Station using a direct cabled connection. This system has not been approved for use with a wireless connection via server antenna to the base station.
- Access can only be gained by SERVICE PERSONS or by USERS who have been instructed about the reasons for the restrictions applied to the location and about any precautions that shall be taken; and
- Access is through the use of a TOOL or lock and key, or other means of security, and is on trolled by the authority responsible for the location.
- Notice! Be careful not to touch the Heat-sink part due to high temperature.



- Signal booster warning label message should include



- Certification

- FCC: This equipment complies with the applicable sections of Title 47 CFR Parts 15,24,27 and 90(Class B)
  - Use of unauthorized antennas, cables, and/or coupling devices not conforming with ERP/EIRP and/or indoor-only restrictions is prohibited.
  - Home/ personal use are prohibited.
- UL/CUL: This equipment complies with UL and CUL 62368-1 Standard for safety for information technology equipment,including electrical business equipment
- FDA/CDRH: This equipment uses a Class 1 LASER according to FDA/CDRH Rules.This product conforms to all applicable standards of 21 CFR Chapter 1, Subchapter J, Part 1040

## Section2

### System configuration and Functions

#### 2.1 eROU(edge Remote Optic Unit)

eROU receives TX optical signals from eHUB and converts them into RF signals. The converted RF signal is radiated to the antenna port via the AMP and Multiplexer.

When receiving RX signals through the antenna port, this unit filters out-of-band signals in a corresponding Multiplexer and sends the results to OPTIC to make electronic-optical conversion of them. After converted, the signals are sent to a upper device of eHUB.

The eROU supports up to 4 bands.

In addition, if band extension is required, another eROU can be added up to three using optical splitters and RF ports. However, the band expansion equipment will be developed in the future.

And eROU is divided into an Internal product with an antenna and an External product without an antenna.

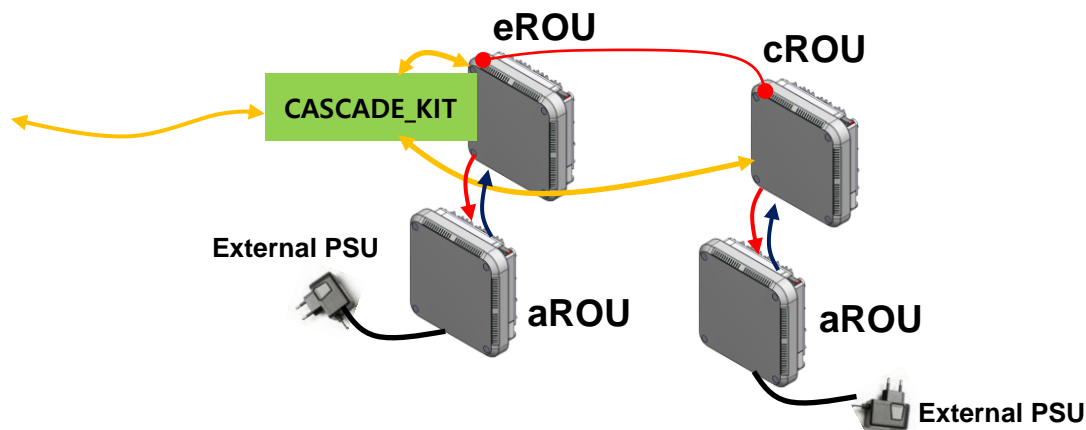


Figure 1. eROU Configuration Diagram



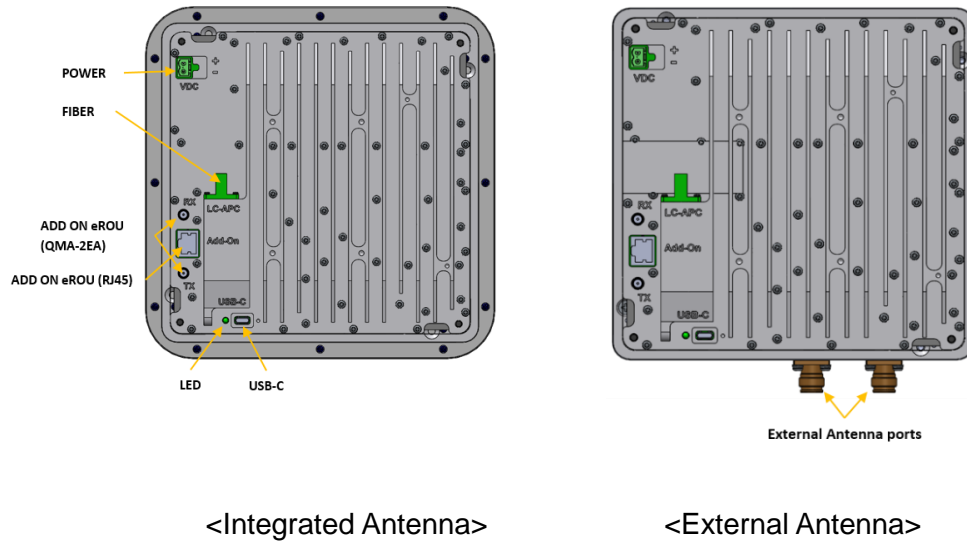


Figure 2. eROU outer Look

### 2.1.1 Specifications of eROU

Item	Spec.		Remark	
	eROU			
The rated mean output Power per band	700LTE	+19dBm		
	2500_100TDD 1900P	+23dBm		
	AWS13	+23dBm		
The nominal downlink bandwidth	700LTE_FN	39MHz		
	2500_100TDD	194MHz		
	1900P	65MHz		
	AWS13	70MHz		
The nominal uplink bandwidth	700LTE	700FN B1 : 17MHz 700FN B2 : 21MHz		
	2500_100TDD	194MHz		
	1900P	65MHz		
	AWS13	70MHz		
The nominal passband gain	Downlink	700LTE_FN	63dB	
		2500_100TDD	67dB	

		1900P	67dB	
		AWS13	67dB	
	Uplink	700LTE_FN 2500_100TDD 1900P AWS13	45dB	
Input/ Output Impedance	50 ohm			
Weight	2.6 kg(Internal)			Common Part
	3.0 kg(External)			
Power consumption	35W			
Temperature range	-5°C to +50°C			Ambient Temperature
Humidity Range	5% ~ 90%			Non-condensing
Sealing (Remote Unit)	IEC/UL/CSA 62368-1			
Size(mm)	220 x 220 x 90			Integrated Antenna
	200 x 200 x 73			External Antenna

## 2.1.2 Port on eROU

### 2.1.2.1 Functions

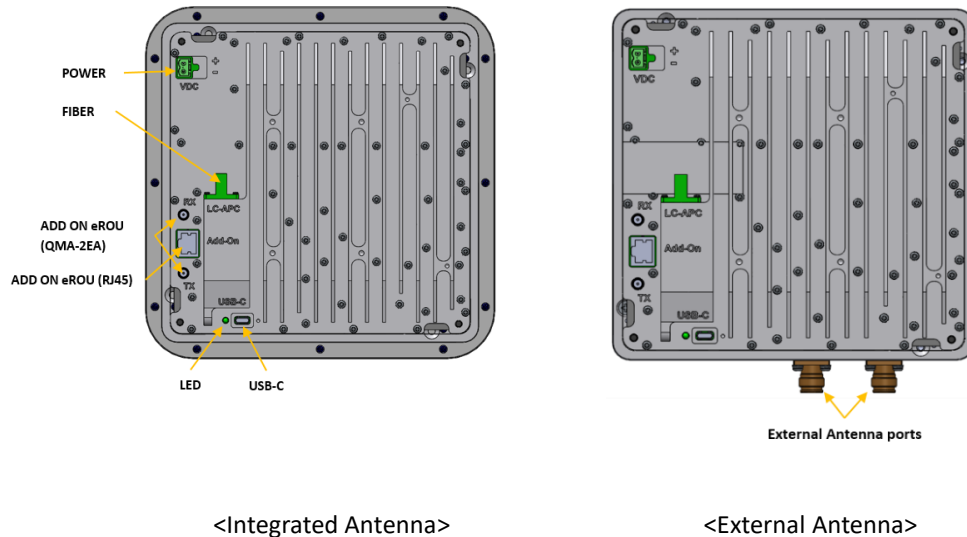



Figure 3. The name of each port on eROU

No	Port	Quantity	Remark
1	Optical Port	1EA	LC/APC
2	ANTENNA PORT(External Only)	1EA	2.2-5 type female
3	Power IN	1EA	Terminal_Block_CONN_2P(TLPS-302V-02P-G)
4	ADD ON eROU Port	2EA	QMA-type female
5	ADD ON eROU Port	1EA	RJ45
6	USB Port	1EA	USB-C Type

## Section3 System Installation

### 3.1 eROU Installation

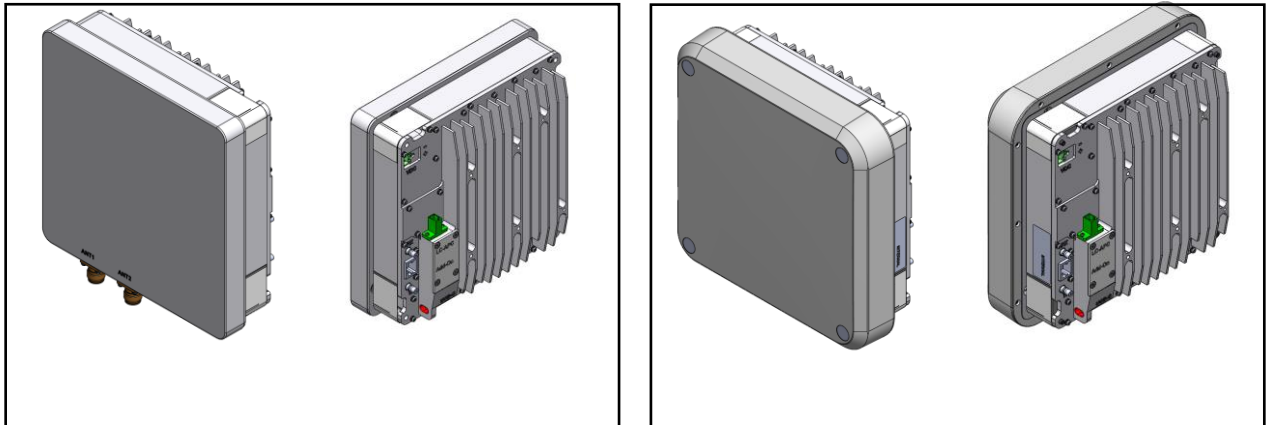
The following table shows the required accessories and tools for installing eROU.

No	Tools	Q'ty	Specification	Remark
1		1	(+), Ø3.0 Length is more than 20mm	For fixing

#### 3.1.1 eROU Enclosure installation

The eROU can be mounted on a wall or ceiling.

and divided into the version of External Antenna and the version of Internal Antenna.



**Figure 4. eROU appearance (Left : External Antenna, Right : Internal Antenna)**

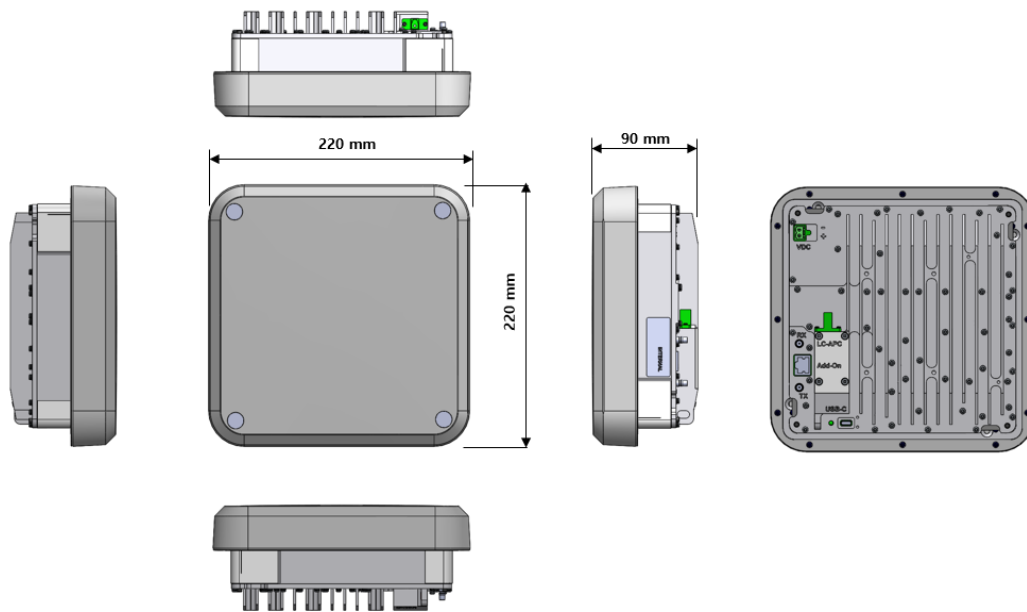
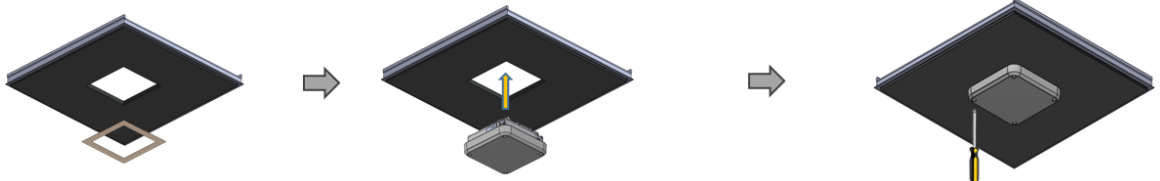


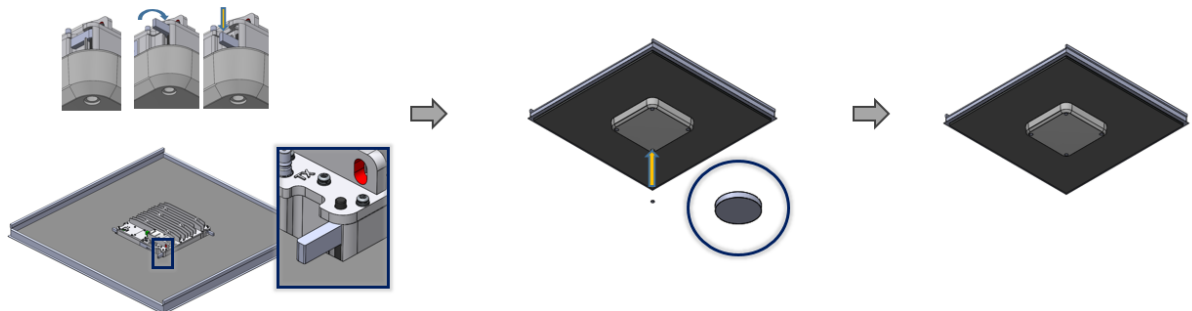
Figure 5. Dimension used to install eROU (internal)

### 3.1.2 eROU(Internal Antenna) Mount Installation\_ Case .1

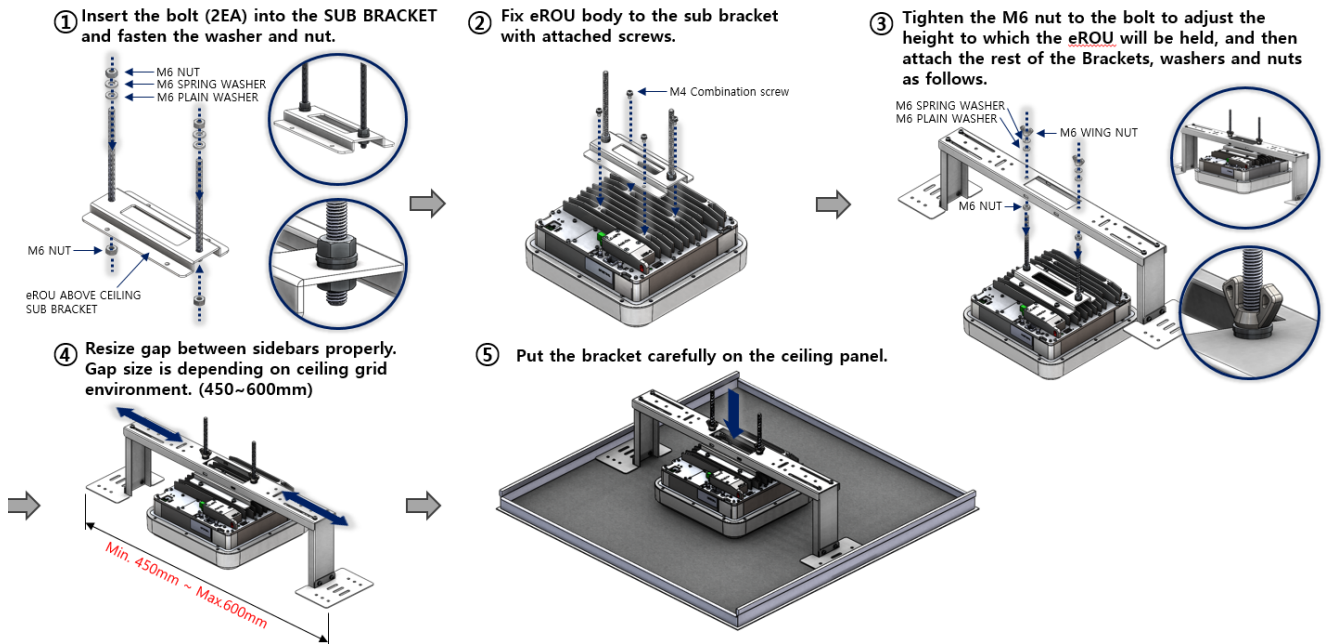
- ① Make a square hole in the ceiling panel. Use the packaged installation plate.
- ② Insert the eROU into the pierced square hole.
- ③ Tighten the screws to the four corners.



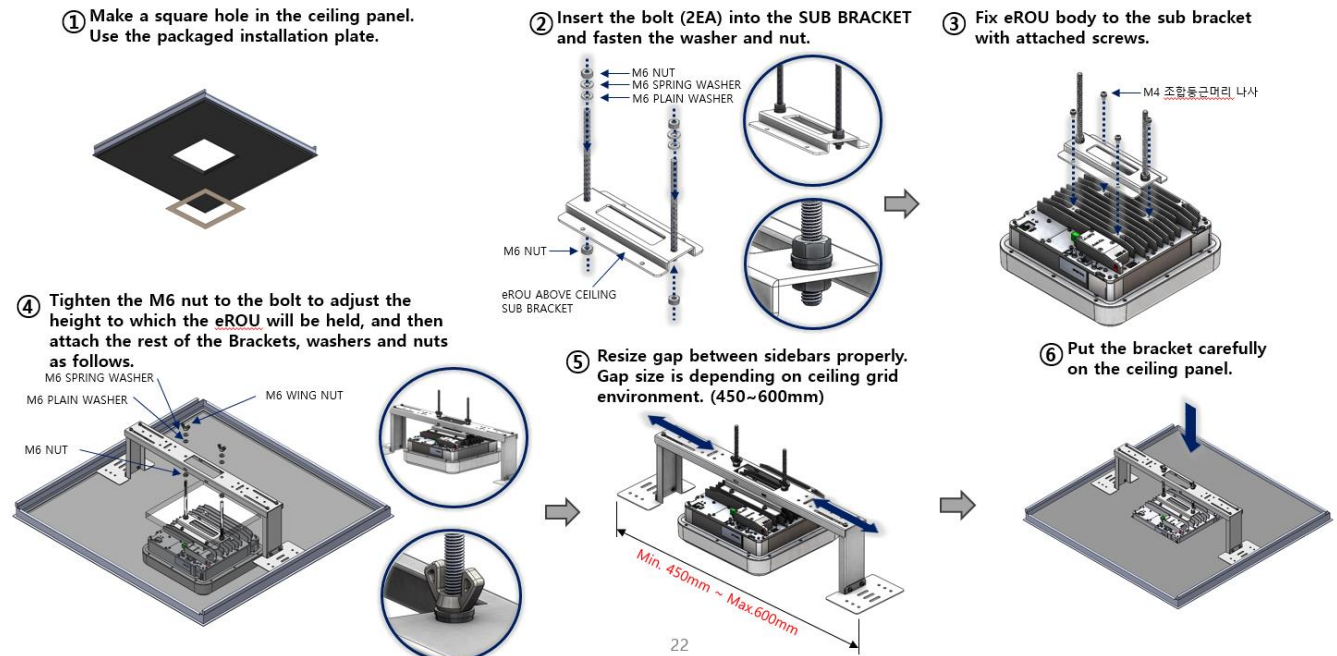
- ④ When the screws are turned, the inner blocks rotate together and are secured to the ceiling panel.
- ⑤ Cover the screw hole with a wrapped gauze. (4EA)



### 3.1.3 eROU(Internal Antenna) Mount Installation\_ Case .2

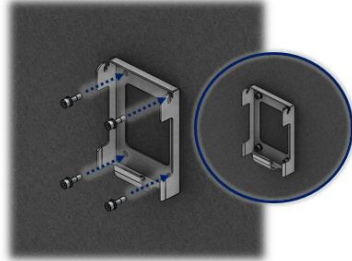


### 3.1.4 eROU(Internal Antenna) Mount Installation\_ Case .3

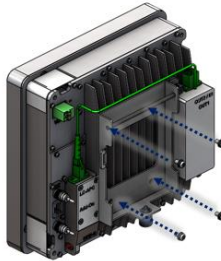


### 3.1.5 eROU(External Antenna) Mount Installation

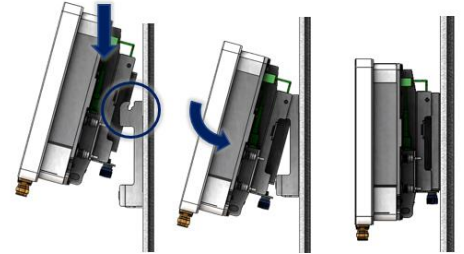
- ① Tighten the BRACKET\_WALL and M6 anchor bolts to the wall.



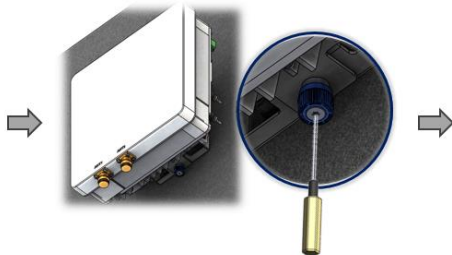
- ② Fix eROU body to the bracket with attached screws.



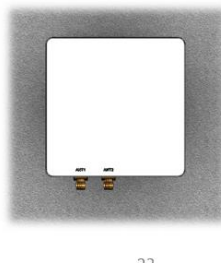
- ③ After the eROU bracket ring is passed through the wall bracket groove, Tighten so that the Captive screw is jammed.



- ④ Use 2.5mm Hex driver to fix the captive screw.

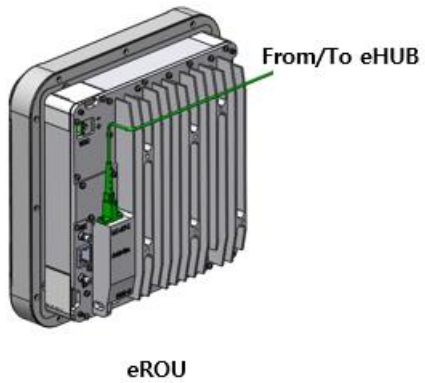


- ⑤ Check the features in the installed direction.

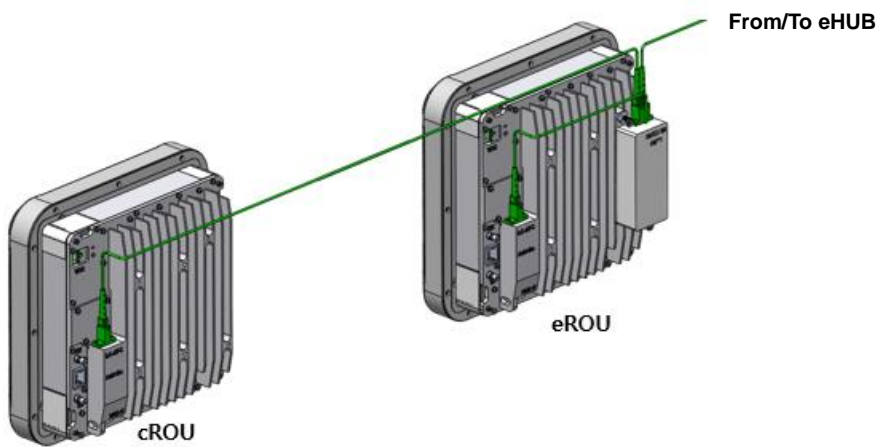


### 3.1.6 Installation Cable Gland

#### 3.1.6.1 eROU

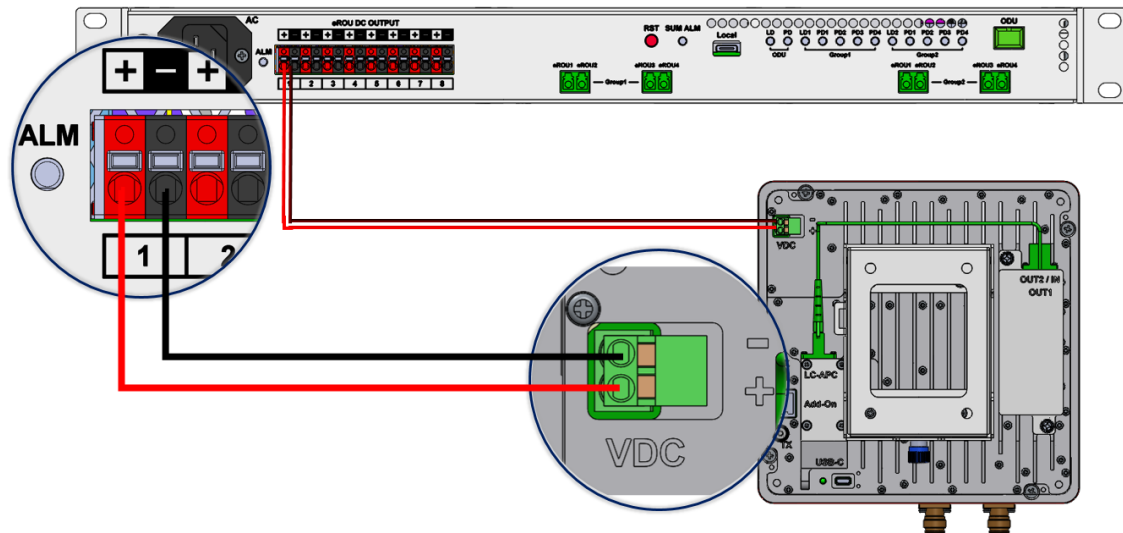


#### 3.1.6.2 Combine of eROU and cROU





### 3.1.7 Power cabling



1. The eROU receives DC power from the eHub or external adapter.
2. Cable length between eHub and eROU supports up to 2.4 km.(Cable specifications recommend AWG14.)
3. If the maximum length between the eHub and the eROU is exceeded, the use of the External Adapter is recommended.

\*\* Adaptor is extra purchases. Specified below shall be used only adapter.

## ***FCC Statement***

### **RF Radiation Exposure**

This equipment complies with RF radiation exposure limits set forth for an uncontrolled environment. This equipment should be installed and operated with a minimum distance of **40 cm** between the radiator and your body. This transmitter must not be co-located or operating in conjunction with any other antenna or transmitter. RF exposure will be addressed at time of installation and the use of higher gain antennas may require larger separation distances.

### **FCC Part 15.105 statement**

This equipment has been tested and found to comply with the limits for a Class A digital device, pursuant to part 15 of the FCC Rules. These limits are designed to provide reasonable protection against harmful interference when the equipment is operated in a commercial environment. This equipment generates, uses, and can radiate radio frequency energy and, if not installed and used in accordance with the instruction manual, may cause harmful interference to radio communications. Operation of this equipment in a residential area is likely to cause harmful interference in which case the user will be required to correct the interference at his own expense.

### **FCC Part 15.21 statement**

Any changes or modifications not expressly approved by the party responsible for compliance could void the user's authority to operate this equipment.

For external & Internal antenna type, the following antenna gain must be applied.

Band Name	Downlink (MHz)	Max. Peak gain (dBi) Internal antenna type	Max. Peak gain (dBi) External antenna type
Lower 700 MHz	728 ~ 746	2.78 (Ant 1)	8
Upper 700 MHz	746 ~ 757	2.78 (Ant 1)	
FirstNet	758 ~ 768	2.78 (Ant 1)	
Broadband PCS	1 930 ~ 1 995	3.69 (Ant 2)	
AWS13	2 110 ~ 2 180	3.3 (Ant 1)	
BRS/EBS	2 496 ~ 2 690	6.67 (Ant 2)	