

Rosewill[®]



AC1200 Wireless USB Adapter

RNX-AC1200UBv2

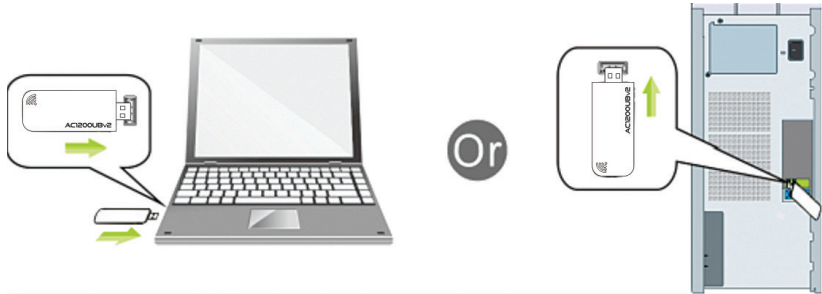
Quick Installation Guide

Dear Customer,

Please follow the below steps to install your RNX-AC1200UBv2 WiFi USB adapter; Thanks for purchasing Rosewill WiFi products!

1. Hardware Installation

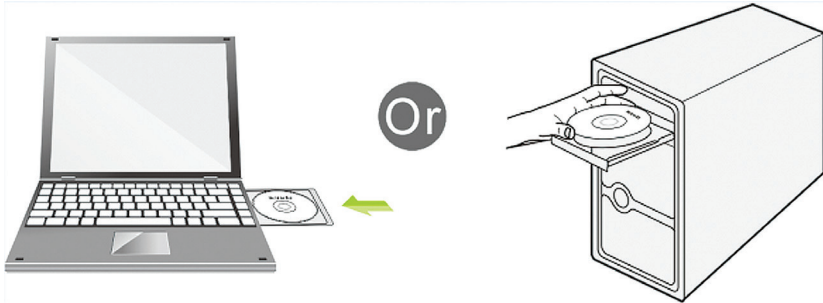
1.1 Turn on your PC, insert RNX-AC1200UBv2 into the USB port of your PC.



Note: After you insert the RNX-AC1200UBv2 into USB port of your PC, in case you see the below interface, please click the Cancel button.



- 1.2 Insert the driver CD from the package into the CD-ROM of your PC, find the corresponding driver for the operating system of your PC.



2. Install Driver on Your PC

- 2.1 **Important Notice:** In order to successfully install the driver, please uninstall the WiFi driver of your other WiFi adapter before installing driver of RNX-AC1200UBv2; In case you install two or more WiFi adapter drivers in one PC, it may cause conflicts between these drivers and cause the WiFi adapter fail to work. You can find the installed WiFi adapter drivers and un-install it in the Control Panel ➔ Install and Un-Install Software.

In case your PC has integrated WiFi adapter, please also turn it off before installing driver for RNX-AC1200UBv2. Otherwise, you will not know which WiFi adapter is working for you and these WiFi adapters may cause conflict with each other.

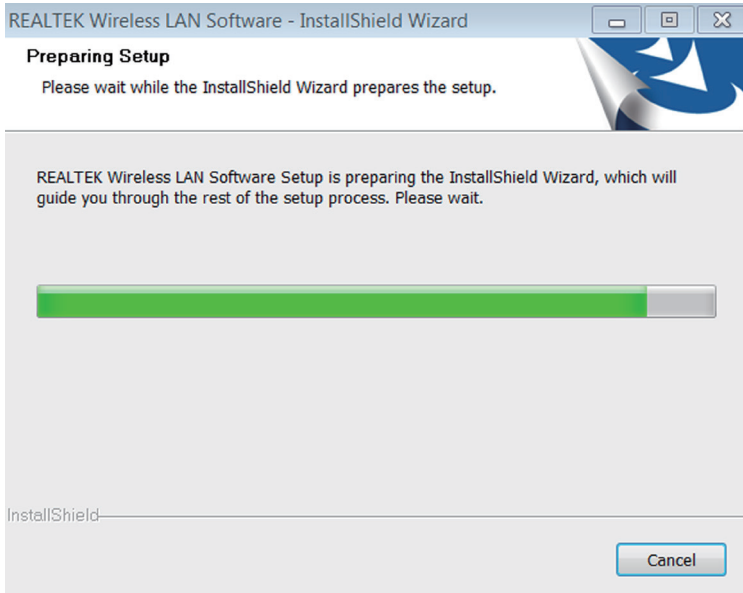
Below are steps for installing RNX-AC1200UBv2 driver on your Windows PC:

- 2.2 In the CD, please find the correct driver for your operating system, open the folder to find and double click this Setup button:

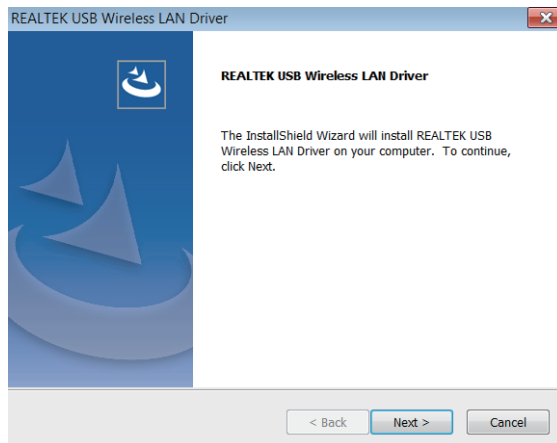


2.3 Please follow the on-screen instruction to finish the installation of driver.

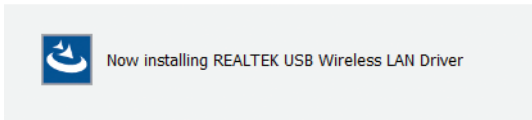
2.3.1 In the below interface, please wait, please do NOT click the “**Cancel**” button; otherwise, installation will stop;



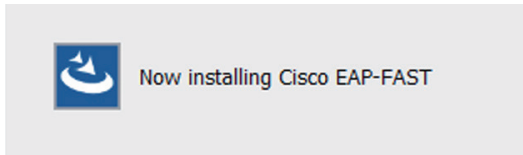
2.3.2 In the below interface, please click "Next" button to continue with the installation;



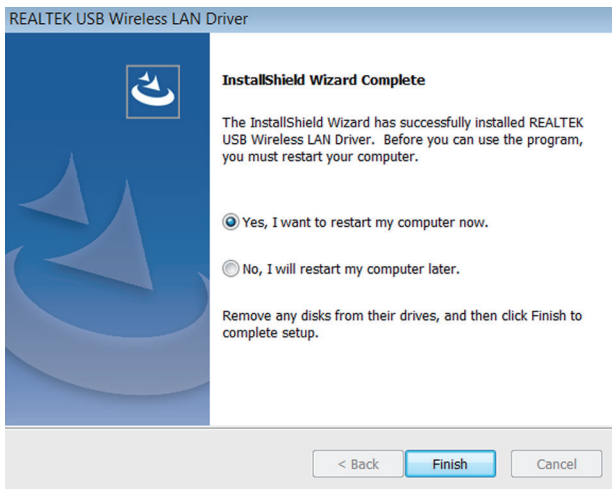
2.3.3 In the below interface, please wait;



2.3.4 In the below interface, please wait;




2.3.5 In the below interface, please select "Yes, I want to restart my computer now." and then click the "Finish" button to restart your computer. When your computer is turned on again, the driver will be installed on your computer successfully and you can start to use RNX-AC1200UBv2;



3. Connect to Your WiFi Broadband Network

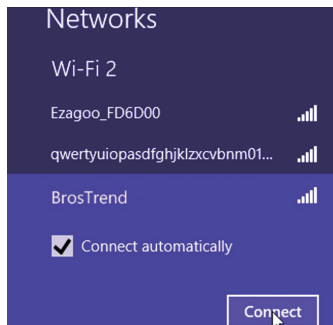
You can manage your RNX-AC1200UBv2 and connect it to your WiFi broadband network by using the Windows Integrated WiFi network management tool. And for Windows OS versions of Windows 8.1/8/7/Vista/XP/10, you can also use the RNX-AC1200UBv2 integrated Realtek WiFi Management tool to manage your WiFi network.

3.1 Use Windows Integrated WiFi Network Management to connect your RNX-AC1200UBv2 to your WiFi Network. We here take Windows 8 as example.

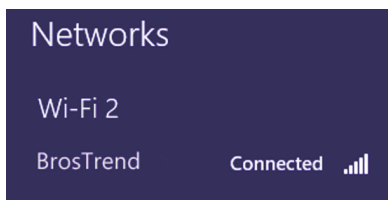
3.1.1 Click the icon  on the bottom right corner of your desktop.




3.1.2 Select your wireless network from the list, click Connect and then follow onscreen instructions. You need to input your WiFi key to connect to your WiFi network.




3.1.3 When your wireless network is connected successfully, the following screen will appear.



3.1.4. Note:

- 3.1.4.1 If you cannot find the icon  , please move your mouse to the top right corner of your desktop, select **Settings** ➔ **Control Panel** ➔ **Network and Internet** ➔ **Network and Sharing Center** ➔ **Change Adapter Settings**, right click Wi-Fi and select Connect / Disconnect.
- 3.1.4.2 If you cannot find your wireless network from the list, please make sure that your PC is not under Airplane mode as Airplane mode disables your Wi-Fi function.
- 3.1.4.3 If the Wi-Fi network which you connect to does not have the Internet access, then you will get a Restricted status and a yellow exclamation mark will appear in the wireless icon in your system tray (lower-right corner).
- 3.1.4.4 If you are using Windows XP and cannot find its wireless management function, please make sure that you have enabled its wireless management function which is called Wireless Zero Configuration services on your XP.

3.2 Use WiFi Management tool to connect your RXN-AC1200UBv2 to your WiFi Network

- 3.2.1.1 You can also use the “Realtek 11n USB Wireless LAN Utility” to manage and connect it to your WiFi network.
- 3.2.1.2 Please double click the icon of  to open the software, follow the on-screen instruction to Search your WiFi network, Input the WiFi Key (WiFi Password), and then connect to the WiFi Network.
- 3.2.1.3 Once you are connected to the WiFi network successfully, your information for this Network will be stored in this software, you can find it in “Profile”; Every time when you turn on your PC, RXN-AC1200UBv2 will connect to your WiFi network automatically with these information stored. In case you connect to more than one WiFi networks successfully, you can choose the corresponding Profile of them in this software.



Rosewill[®] **Technical Support Information**
techsupport@rosewill.com 1-800-575-9885

*Thank you for purchasing a quality Rosewill product.
Please register your product at: www.rosewill.com
for complete warranty information and support for your product.*

Warning Statement

This device complies with part 15 of the FCC Rules. Operation is subject to the following two conditions: (1) This device may not cause harmful interference, and (2) this device must accept any interference received, including interference that may cause undesired operation.

Any Changes or modifications not expressly approved by the party responsible for compliance could void the user's authority to operate the equipment.

Note: This equipment has been tested and found to comply with the limits for a Class B digital device, pursuant to part 15 of the FCC Rules. These limits are designed to provide reasonable protection against harmful interference in a residential installation. This equipment generates uses and can radiate radio frequency energy and, if not installed and used in accordance with the instructions, may cause harmful interference to radio communications. However, there is no guarantee that interference will not occur in a particular installation. If this equipment does cause harmful interference to radio or television reception, which can be determined by turning the equipment off and on, the user is encouraged to try to correct the interference by one or more of the following measures:

- Reorient or relocate the receiving antenna.
- Increase the separation between the equipment and receiver.
- Connect the equipment into an outlet on a circuit different from that to which the receiver is connected.
- Consult the dealer or an experienced radio/TV technician for help.

The device has been evaluated to meet general RF exposure requirement. The device can be used in portable exposure condition without restriction.