

# TEST REPORT

**Reference No.**..... : WTD16S0754994E  
**FCC ID**..... : W6JTH3  
**Applicant**..... : TIMOTION Technology Co., Ltd  
**Address**..... : Shiyong Minying Industrial Zone, Hengli Town, Dongguan City  
Guangdong Province 523465, China  
**Manufacturer**..... : The same as above  
**Address**..... : The same as above  
**Product Name**..... : Handset  
**Model No.** ..... : TH3  
**Standards**..... : FCC CFR47 Part 15 Section 15.231: 2015  
**Date of Receipt sample**.... : Jul. 05, 2016  
**Date of Test**..... : Jul. 06 – 21, 2016  
**Date of Issue**..... : Jul. 27, 2016  
**Test Result**..... : **Pass**

Remarks:

The results shown in this test report refer only to the sample(s) tested, this test report cannot be reproduced, except in full, without prior written permission of the company. The report would be invalid without specific stamp of test institute and the signatures of compiler and approver.

**Prepared By:**

**Waltek Services (Shenzhen) Co., Ltd.**

Address: 1/F., Fukangtai Building, West Baima Road, Songgang Street, Baoan District, Shenzhen,  
Guangdong, China

Tel :+86-755-83551033

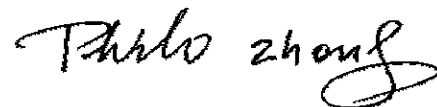
Fax:+86-755-83552400

Compiled by:



Zero Zhou /Test Engineer

Approved by:



Philo Zhong / Manager

## 2 Contents

	Page
<b>1 COVER PAGE.....</b>	<b>1</b>
<b>2 CONTENTS.....</b>	<b>2</b>
<b>3 REVISION HISTORY.....</b>	<b>3</b>
<b>4 GENERAL INFORMATION.....</b>	<b>4</b>
4.1 GENERAL DESCRIPTION OF E.U.T.....	4
4.2 DETAILS OF E.U.T.....	4
4.3 TEST MODE.....	4
4.4 TEST FACILITY.....	4
<b>5 EQUIPMENT USED DURING TEST.....</b>	<b>5</b>
5.1 EQUIPMENTS LIST.....	5
5.2 MEASUREMENT UNCERTAINTY.....	6
5.3 TEST EQUIPMENT CALIBRATION.....	6
<b>6 TEST SUMMARY.....</b>	<b>7</b>
<b>7 RADIATED SPURIOUS EMISSIONS.....</b>	<b>8</b>
7.1 EUT OPERATION.....	8
7.2 TEST SETUP.....	9
7.3 SPECTRUM ANALYZER SETUP.....	10
7.4 TEST PROCEDURE.....	11
7.5 SUMMARY OF TEST RESULTS.....	12
<b>8 PERIODIC OPERATION.....</b>	<b>13</b>
<b>9 EMISSION BANDWIDTH.....</b>	<b>16</b>
9.1 TEST PROCEDURE.....	16
9.2 TEST RESULT.....	16
<b>10 ANTENNA REQUIREMENT.....</b>	<b>17</b>
<b>11 RF EXPOSURE.....</b>	<b>18</b>
11.1 REQUIREMENTS.....	18
11.2 THE PROCEDURES / LIMIT.....	18
<b>12 PHOTOGRAPHS – MODEL TH3 TEST SETUP PHOTOS.....</b>	<b>19</b>
12.1 PHOTOGRAPH – RADIATION SPURIOUS EMISSION TEST SETUP.....	19
<b>13 PHOTOGRAPHS - CONSTRUCTIONAL DETAILS.....</b>	<b>21</b>
13.1 MODEL TH3- EXTERNAL PHOTOS.....	21
13.2 MODEL TH3- INTERNAL PHOTOS.....	24

**3 Revision History**

<b>Test report No.</b>	<b>Date of Receipt sample</b>	<b>Date of Test</b>	<b>Date of Issue</b>	<b>Purpose</b>	<b>Comment</b>	<b>Approved</b>
WTD16S0754994E	Jul. 05, 2016	Jul. 06 – 21, 2016	Jul. 27, 2016	original	-	Valid

## 4 General Information

### 4.1 General Description of E.U.T.

Product Name	:Handset
Model No.	:TH3
Model Difference	: N/A
Type of Modulation	: ASK
Frequency Range	: 315.00 MHz
The Lowest Oscillator	: 315.00 MHz
Antenna installation	: Integrated Antenna

### 4.2 Details of E.U.T.

Technical Data	: DC 12V by ALKALINE BATTERY
----------------	------------------------------

### 4.3 Test Mode

All test mode(s) and condition(s) mentioned were considered and evaluated respectively by performing full tests, the worst data were recorded and reported.

Test mode	Lower channel	Middle channel	Upper channel
Transmitting	315.00MHz	/MHz	/MHz

### 4.4 Test Facility

The test facility has a test site registered with the following organizations:

- **IC – Registration No.: 7760A-1**

Waltek Services (Shenzhen) Co., Ltd. has been registered and fully described in a report filed with the Industry Canada. The acceptance letter from the Industry Canada is maintained in our files. Registration 7760A-1, October 15, 2015

- **FCC Test Site 1#– Registration No.: 880581**

Waltek Services(Shenzhen) Co., Ltd. EMC Laboratory `has been registered and fully described in a report filed with the (FCC) Federal Communications Commission. The acceptance letter from the FCC is maintained in our files. Registration 880581, April 29, 2014.

- **FCC Test Site 2#– Registration No.: 328995**

Waltek Services(Shenzhen) Co., Ltd. EMC Laboratory `has been registered and fully described in a report filed with the (FCC) Federal Communications Commission. The acceptance letter from the FCC is maintained in our files. Registration 328995, December 3, 2014.

## 5 Equipment Used during Test

### 5.1 Equipments List

<b>3m Semi-anechoic Chamber for Radiation Emissions Test site 1#</b>						
<b>Item</b>	<b>Equipment</b>	<b>Manufacturer</b>	<b>Model No.</b>	<b>Serial No.</b>	<b>Last Calibration Date</b>	<b>Calibration Due Date</b>
1	EMC Analyzer	Agilent	E7405A	MY45114943	Sep.15,2015	Sep.14,2016
2	Active Loop Antenna	Beijing Dazhi	ZN30900A	-	Sep.15,2015	Sep.14,2016
3	Trilog Broadband Antenna	SCHWARZBECK	VULB9163	336	Apr.19,2016	Apr.18,2017
4	Coaxial Cable (below 1GHz)	Top	TYPE16(13M)	-	Sep.15,2015	Sep.14,2016
5	Broad-band Horn Antenna	SCHWARZBECK	BBHA 9120 D	667	Apr.19,2016	Apr.18,2017
6	Broad-band Horn Antenna	SCHWARZBECK	BBHA 9170	335	Apr.19,2016	Apr.18,2017
7	Broadband Preamplifier	COMPLIANCE DIRECTION	PAP-1G18	2004	Mar.17,2016	Mar.16,2017
8	Coaxial Cable (above 1GHz)	Top	1GHz-25GHz	EW02014-7	Apr.10,2016	Apr.09,2017
<b>3m Semi-anechoic Chamber for Radiation Emissions Test site 2#</b>						
<b>Item</b>	<b>Equipment</b>	<b>Manufacturer</b>	<b>Model No.</b>	<b>Serial No</b>	<b>Last Calibration Date</b>	<b>Calibration Due Date</b>
1	Test Receiver	R&S	ESCI	101296	Sep.15,2015	Sep.14,2016
2	Trilog Broadband Antenna	SCHWARZBECK	VULB9160	9160-3325	Sep.15,2015	Sep.14,2016
3	Amplifier	Compliance pirection systems inc	PAP-0203	22024	Sep.15,2015	Sep.14,2016
4	Cable	HUBER+SUHNER	CBL2	525178	Sep.15,2015	Sep.14,2016
<b>RF Conducted Testing</b>						
<b>Item</b>	<b>Equipment</b>	<b>Manufacturer</b>	<b>Model No.</b>	<b>Serial No.</b>	<b>Last Calibration Date</b>	<b>Calibration Due Date</b>
1.	EMC Analyzer (9k~26.5GHz)	Agilent	E7405A	MY45114943	Sep.15,2015	Sep.14,2016
2.	Spectrum Analyzer (9k-6GHz)	R&S	FSL6	100959	Sep.15,2015	Sep.14,2016
3.	Signal Analyzer (9k~26.5GHz)	Agilent	N9010A	MY50520207	Sep.15,2015	Sep.14,2016

## 5.2 Measurement Uncertainty

Test Item	Frequency Range	Uncertainty	Note
Conducted Emissions	150kHz~30MHz	±3.64dB	(1)
Radiated Spurious Emissions	30MHz~1000MHz	±5.03dB	(1)
	1000M~5000MHz	± 5.47 dB	(1)

(1) This uncertainty represents an expanded uncertainty expressed at approximately the 95% confidence level using a coverage factor of  $k=2$ .

## 5.3 Test Equipment Calibration

All the test equipments used are valid and calibrated by CEPREI Certification Body that address is No.110 Dongguan Zhuang RD. Guangzhou, P.R.China.

## 6 Test Summary

Test Items	Test Requirement	Result
Radiated Spurious Emissions	15.205(a) 15.209 15.231(a)	C
Periodic Operation	15.231(a)	C
Emission Bandwidth	15.231(c)	C
Antenna Requirement	15.203	C
Maximum Permissible Exposure (Exposure of Humans to RF Fields)	1.1307(b)(1)	C
Note: C=Conform; NC=Not Conform; NT=Not Tested; N/A=Not Applicable.		

## 7 Radiated Spurious Emissions

Test Requirement: FCC Part15 Paragraph 15.231(a)  
 Test Method: ANSI C63.10:2013;ANSI C63.4:2014  
 Test Result: PASS  
 Measurement Distance: 3m

Limit:

Fundamental Frequency (MHz)	Field Strength of Fundamental (uV/m)	Field Strength of Fundamental (dBuV/m)	Field Strength of Spurious Emission (uV/m)	Field Strength of Spurious Emission (dBuV/m)
44.66-40.70	2250	67	225	47
70-130	1250	62	125	42
130-174	1250 to 3750	62 to 71.48	125 to 375	42 to 51.48
174-260	3750	71.48	375	51.48
260-470	3750 to 12500	71.48 to 81.94	375 to 1250	51.48 to 61.94
Above 470	12500	81.94	1250	61.94
aa** linear interpolations				

### 7.1 EUT Operation

Operating Environment :

Temperature: 23.5 °C  
 Humidity: 51.1 % RH  
 Atmospheric Pressure: 101.2kPa

EUT Operation :

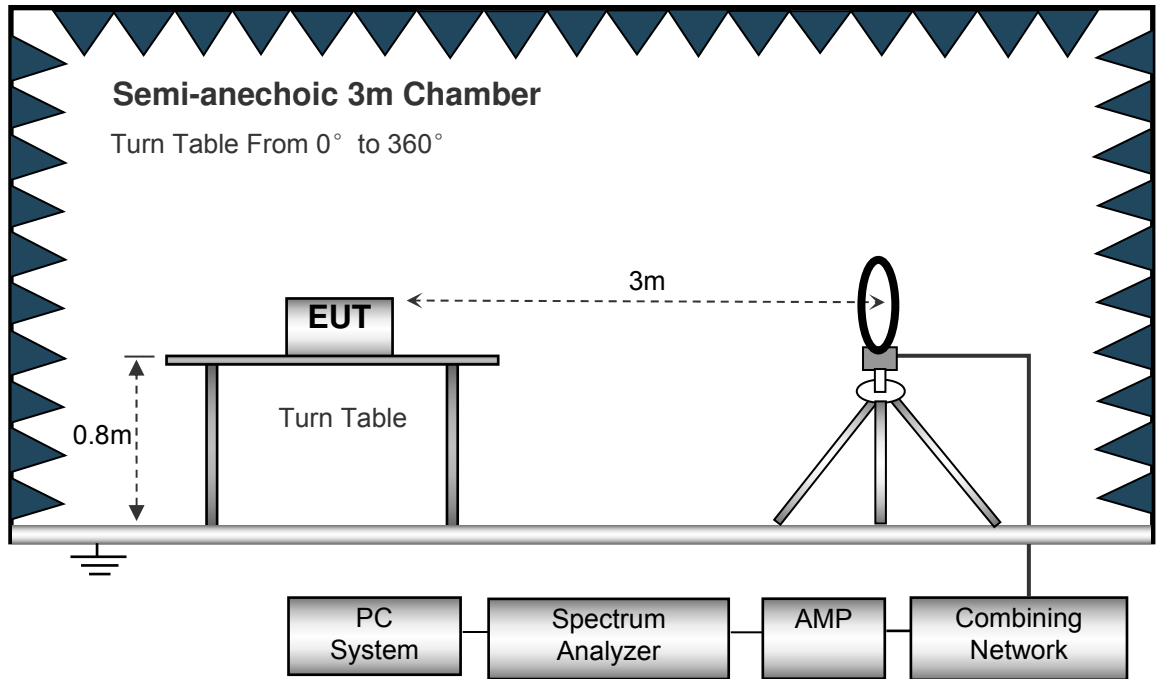
The test was performed in transmitting mode, the test data were shown in the report.



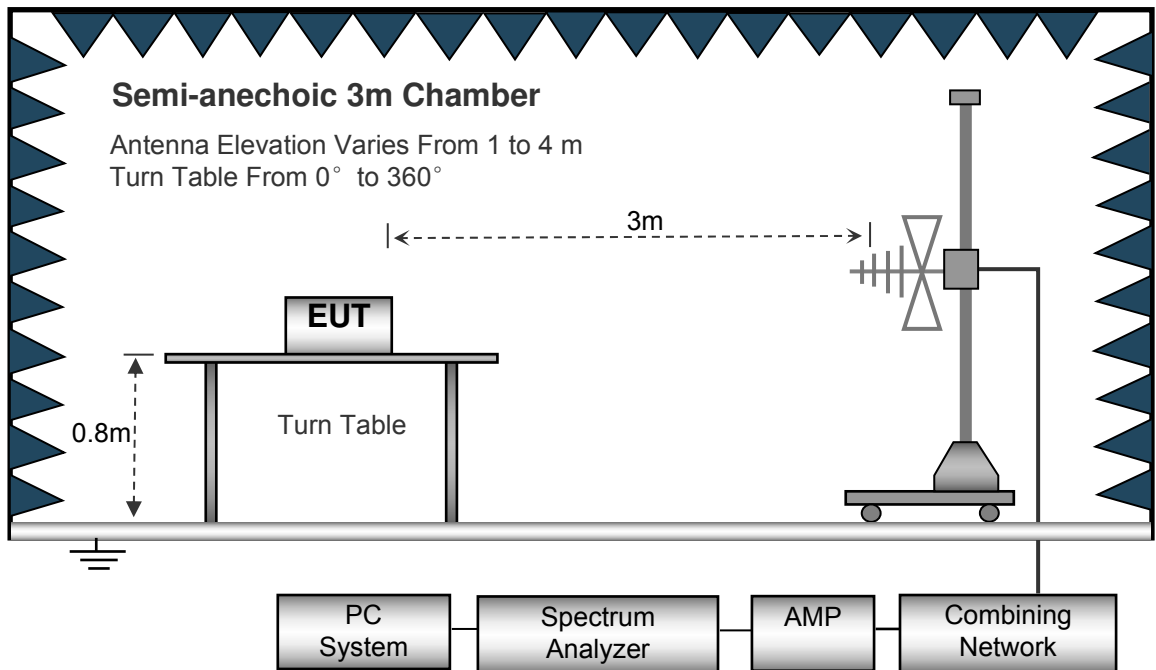
### 7.2 Test Setup

The radiated emission tests were performed in the 3m Semi- Anechoic Chamber test site, using the setup accordance with the ANSI C63.10.

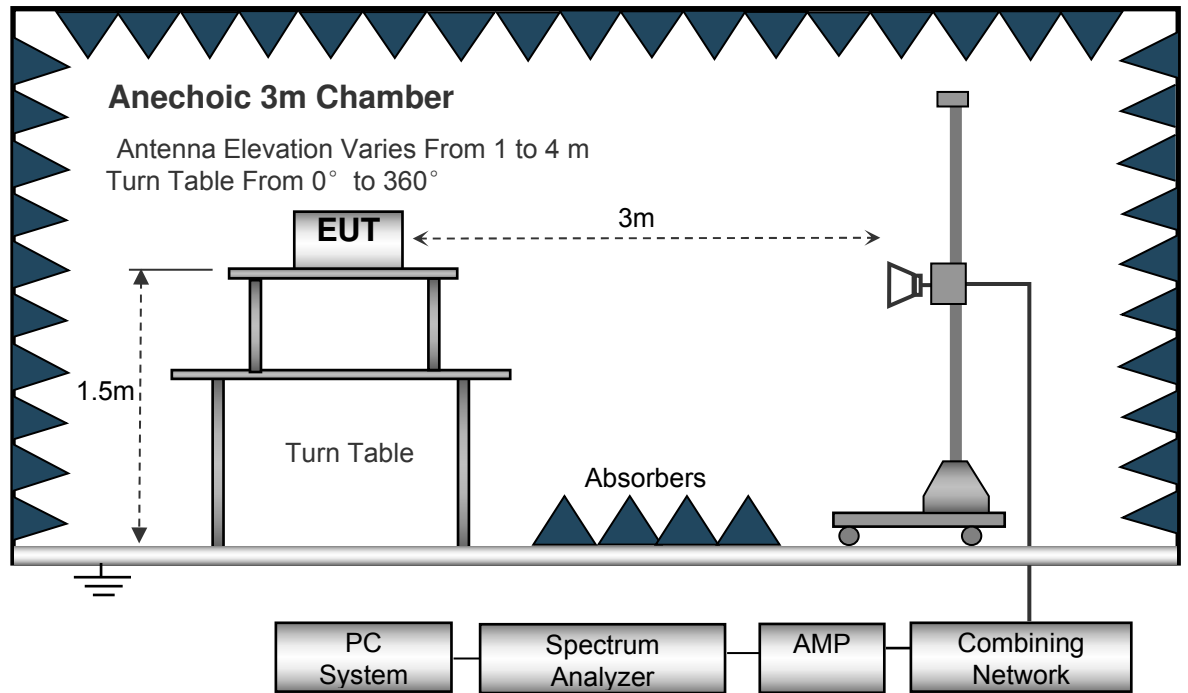
The test setup for emission measurement below 30MHz.



The test setup for emission measurement from 30 MHz to 1 GHz.



The test setup for emission measurement above 1 GHz.



### 7.3 Spectrum Analyzer Setup

Below 30MHz

Sweep Speed..... Auto  
 IF Bandwidth..... 10kHz  
 Video Bandwidth..... 10kHz  
 Resolution Bandwidth..... 10kHz

30MHz ~ 1GHz

Sweep Speed..... Auto  
 Detector .....PK  
 Resolution Bandwidth..... 100kHz  
 Video Bandwidth..... 300kHz

Above 1GHz

Sweep Speed..... Auto  
 Detector .....PK  
 Resolution Bandwidth..... 1MHz  
 Video Bandwidth..... 3MHz

## 7.4 Test Procedure

1. The EUT is placed on a turntable. For below 1GHz, the EUT is 0.8m above ground plane; For above 1GHz, the EUT is 1.5m above ground plane.
2. The turntable shall be rotated for 360 degrees to determine the position of maximum emission level.
3. EUT is set 3m away from the receiving antenna, which is moved from 1m to 4m to find out the maximum emissions. The spectrum was investigated from the lowest radio frequency signal generated in the device, without going below 9 kHz, up to the tenth harmonic of the highest fundamental frequency or to 40 GHz, whichever is lower.
4. Maximum procedure was performed on the six highest emissions to ensure EUT compliance.
5. And also, each emission was to be maximized by changing the polarization of receiving antenna both horizontal and vertical.
6. Repeat above procedures until the measurements for all frequencies are complete.
7. The radiation measurements are tested under 3-axes(X,Y,Z) position(X denotes lying on the table, Y denotes side stand and Z denotes vertical stand), After pre-test, It was found that the worse radiation emission was get at the X position. So the data shown was the X position only.

## 7.5 Summary of Test Results

Test Frequency : 30MHz ~ 4GHz

Frequency	Receiver Reading (PK)	Turn table Angle	RX Antenna		Corrected Factor	Corrected Amplitude (PK)	FCC Part 15.231/15.209/205	
			Height	Polar			Limit	Margin
(MHz)	(dB $\mu$ V)	Degree	(m)	(H/V)	(dB/m)	(dB $\mu$ V/m)	(dB $\mu$ V/m)	(dB)
315.00	81.63	317	1.1	H	-7.31	74.32	95.62	-21.30
315.00	81.28	309	1.1	V	-7.31	73.97	95.62	-21.65
630.00	58.74	46	1.5	H	0.04	58.78	75.62	-16.84
630.00	59.32	119	1.9	V	0.04	59.36	75.62	-16.26
1825.84	49.26	129	1.4	H	-16.38	32.88	74.00	-41.12
1825.84	50.87	317	1.6	V	-16.38	34.49	74.00	-39.51
2639.71	52.34	195	1.8	H	-14.87	37.47	74.00	-36.53
2639.71	53.29	268	1.8	V	-14.87	38.42	74.00	-35.58

**AV = Peak +20Log<sub>10</sub>(duty cycle) =PK+(-9.15)** [refer to section 8 for more detail]

Frequency	PK	RX Antenna Polar	Duty cycle Factor	Calculated AV	FCC Part 15.231/209/205	
					Limit	Margin
(MHz)	(dB $\mu$ V/m)	(H/V)	(dB)	(dB $\mu$ V/m)	(dB $\mu$ V/m)	(dB)
315.00	74.32	H	-9.15	65.17	75.62	-10.45
315.00	73.97	V	-9.15	64.82	75.62	-10.80
630.00	58.78	H	-9.15	49.63	55.62	-5.99
630.00	59.36	V	-9.15	50.21	55.62	-5.41
1825.84	32.88	H	-9.15	23.73	54.00	-30.27
1825.84	34.49	V	-9.15	25.34	54.00	-28.66
2639.71	37.47	H	-9.15	28.32	54.00	-25.68
2639.71	38.42	V	-9.15	29.27	54.00	-24.73

## 8 Periodic Operation

The duty cycle was determined by the following equation:

To calculate the actual field intensity, The duty cycle correction factor in decibel is needed for later use and can be obtained from following conversion

$$\text{Duty Cycle(\%)} = \text{Total On interval in a complete pulse train} / \text{Length of a complete pulse train} * \%$$

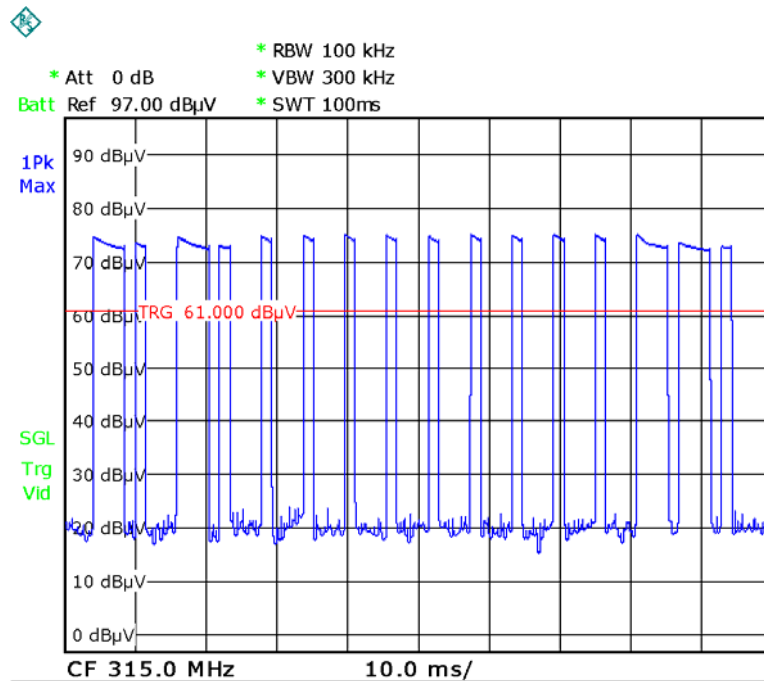
$$\text{Duty Cycle Correction Factor(dB)} = 20 * \text{Log}_{10}(\text{Duty Cycle(\%)})$$

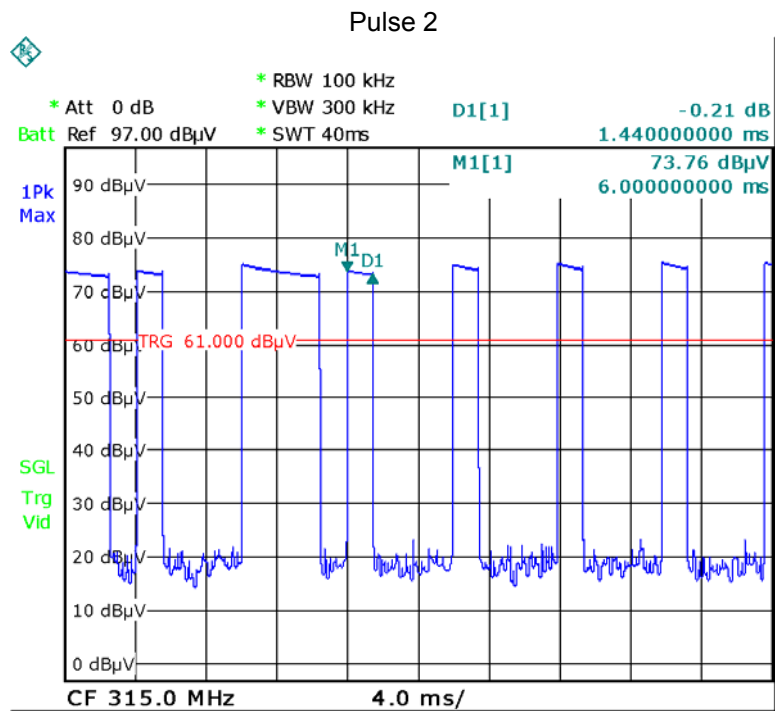
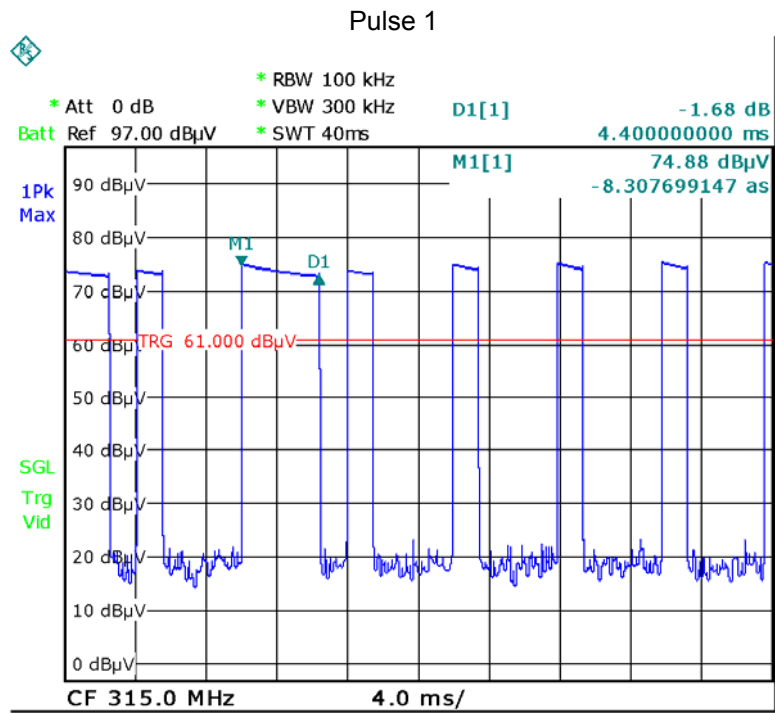
Total transmission time(ms)	4.4*4+1.44*12=34.88
Length of a complete transmission period(ms)	100
Duty Cycle(%)	34.88
Duty Cycle Correction Factor(dB)	-9.15

Refer to the duty cycle plot (as below), This device meets the FCC requirement.

Length of a complete pulse train:

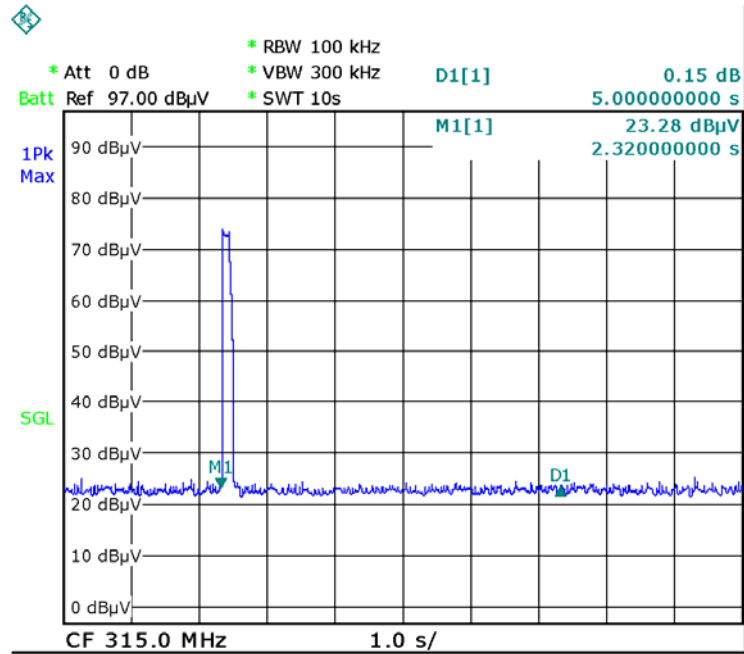
Remark: FCC part15.35(c) required that a complete pulse train is more than 0.1 seconds, the measured field strength shall be determined from the average absolute voltage during a 0.1 second interval during which the field strength is at its maximum value.





FCC Part15.231(a)(1) A manually operated transmitter shall employ a switch that will automatically deactivate the transmitter within not more than 5 seconds of being released.

(2)A transmitter activated automatically shall cease transmission within 5 seconds after activation.



## 9 Emission Bandwidth

Test Requirement: FCC Part15.231(c)  
 Test Method: FCC Part15.231(c);ANSI C63.10:2013  
 Limit The bandwidth of the emission shall be no wider than 0.25% of the center frequency for devices operating above 70 MHz and below 900 MHz. For devices operating above 900 MHz, the emission shall be no wider than 0.5% of the center frequency.

### 9.1 Test Procedure

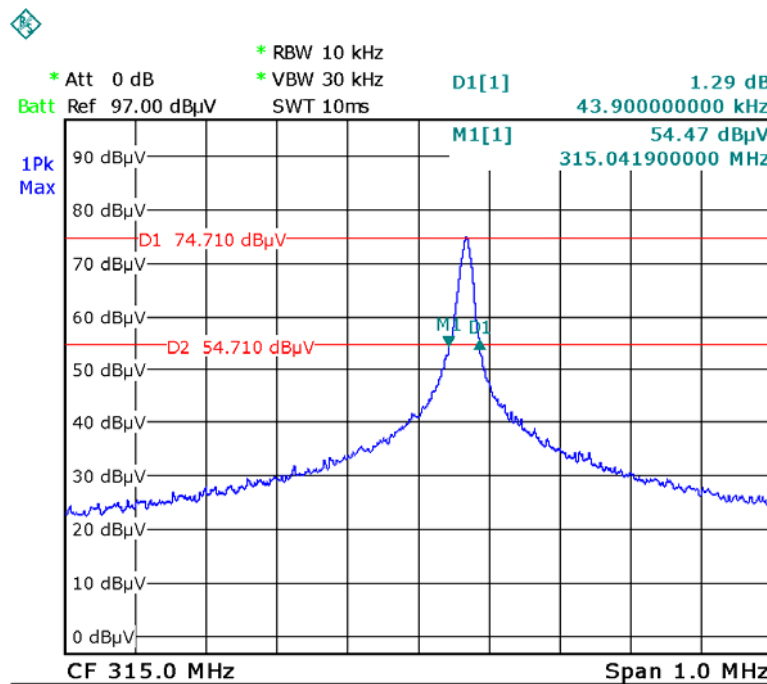
1. The transmitter output (antenna port) was connected to the spectrum analyzer.EUT and its simulators are placed on a table, let EUT working in test mode, then test it.
2. The bandwidth of the fundamental frequency was measure by spectrum analyser with 10kHz RBW and 30kHz VBW. The 20 dB bandwidth was recorded.

### 9.2 Test Result

Frequency (MHz)	20dB Bandwidth Emission(KHz)	Limit (KHz)	Result
315.00	43.90	787.50	Pass

Limit=Center Frequency\*0.25%

Test Plot





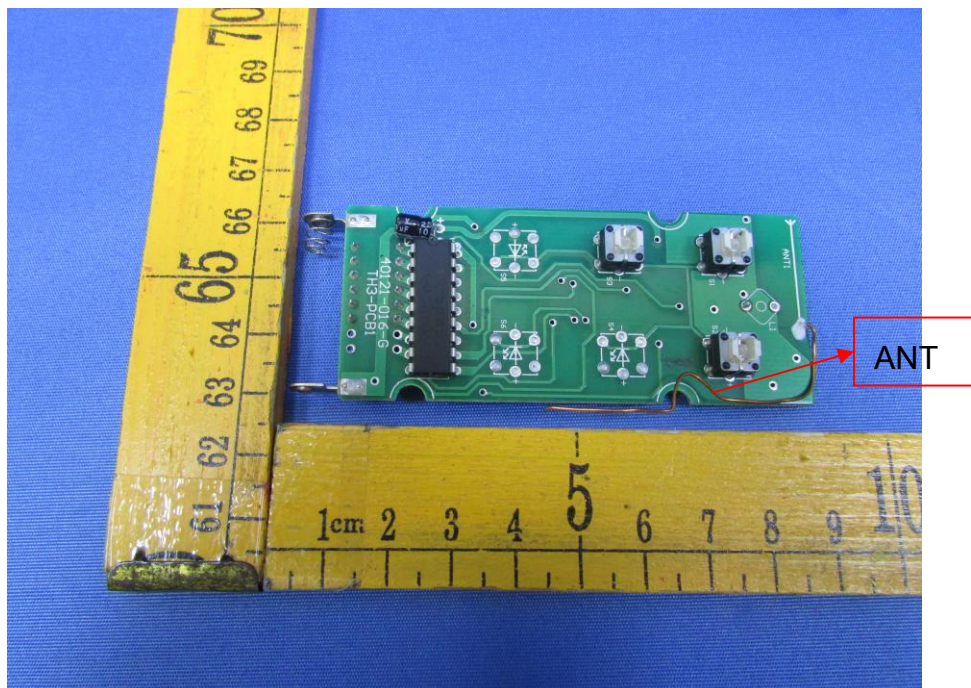
## 10 Antenna Requirement

An intentional radiator shall be designed to ensure that no antenna other than that furnished by the responsible party shall be used with the device. The use of a permanently attached antenna or of an antenna that uses a unique coupling to the intentional radiator shall be considered sufficient to comply with the provisions of this section. The manufacturer may design the unit so that a broken antenna can be replaced by the user, but the use of a standard antenna jack or electrical connector is prohibited. This requirement does not apply to carrier current devices or to devices operated under the provisions of §15.211, §15.213, §15.217, §15.219, or §15.221. Further, this requirement does not apply to intentional radiators that must be professionally installed, such as perimeter protection systems and some field disturbance sensors, or to other intentional radiators which, in accordance with §15.31(d), must be measured at the installation site. However, the installer shall be responsible for ensuring that the proper antenna is employed so that the limits in this part are not exceeded.

For intentional device, according to FCC 47 CFR Section 15.203, an intentional radiator shall be designed to ensure that no antenna other than that furnished by the responsible party shall be used with the device.

Result:

The EUT has one Integrated Antenna, the gain is 0dBi. meets the requirements of FCC 15.203.



## 11 RF Exposure

Test Requirement: FCC Part 1.1307

Evaluation Method 447498 D01 General RF Exposure Guidance v06

### 11.1 Requirements

1) The 1-g and 10-g SAR test exclusion thresholds for 100 MHz to 6 GHz at test separation distances  $\leq 50$  mm are determined by:

$[(\text{max. power of channel, including tune-up tolerance, mW})/(\text{min. test separation distance, mm})] \cdot [\sqrt{f(\text{GHz})}] \leq 3.0$  for 1-g SAR and  $\leq 7.5$  for 10-g extremity SAR where

1.  $f(\text{GHz})$  is the RF channel transmit frequency in GHz
2. Power and distance are rounded to the nearest mW and mm before calculation
3. The result is rounded to one decimal place for comparison

The test exclusions are applicable only when the minimum test separation distance is  $\leq 50$  mm and for transmission frequencies between 100 MHz and 6 GHz. When the minimum test separation distance is  $< 5$  mm, a distance of 5 mm is applied to determine SAR test exclusion.

### 11.2 The procedures / limit

Source-based time-averaged maximum output power(dBm)	Source-based time-averaged maximum output power(mW)	Minimum test separation distance required for the exposure conditions(mm)	SAR Test Exclusion Thresholds(mW)	Evaluation Result
-27.46	0.002	5	26.74	Complies

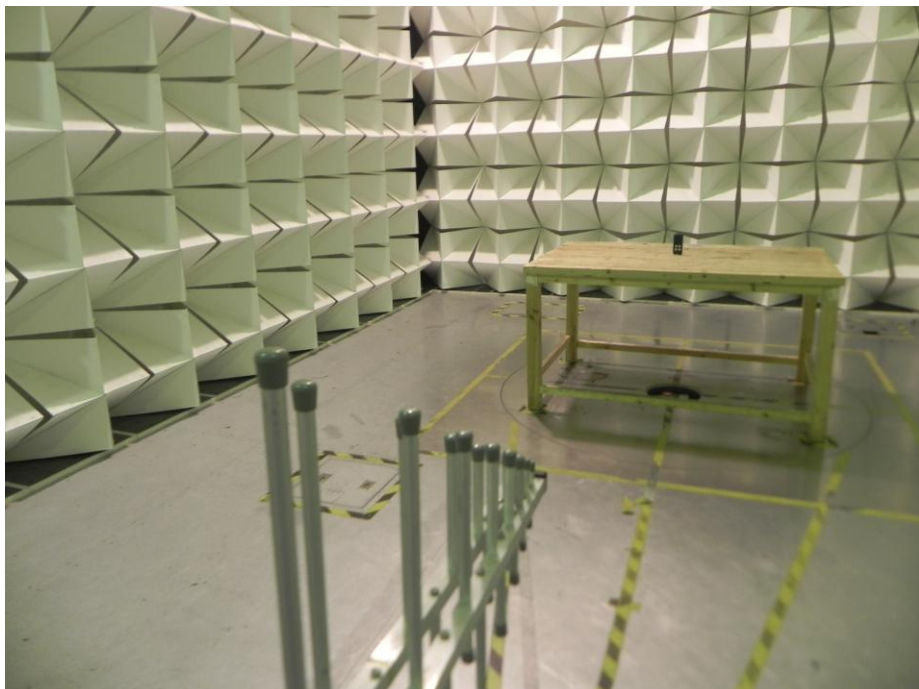
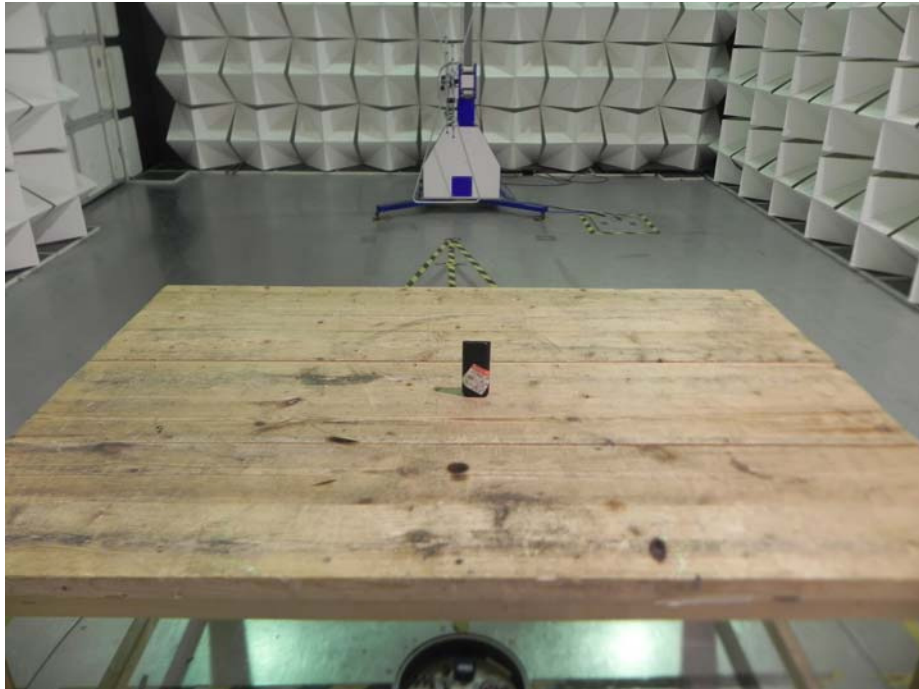
Note: the following is Source-based time-averaged maximum output power Calculation

Frequency	Source-based time-averaged maximum output power	Substituted (0dBm)	Source-based time-averaged maximum output power
(MHz)	(dB $\mu$ V/m)	(dB $\mu$ V/m)	(dBm)
315.00	74.32	101.78	-27.46

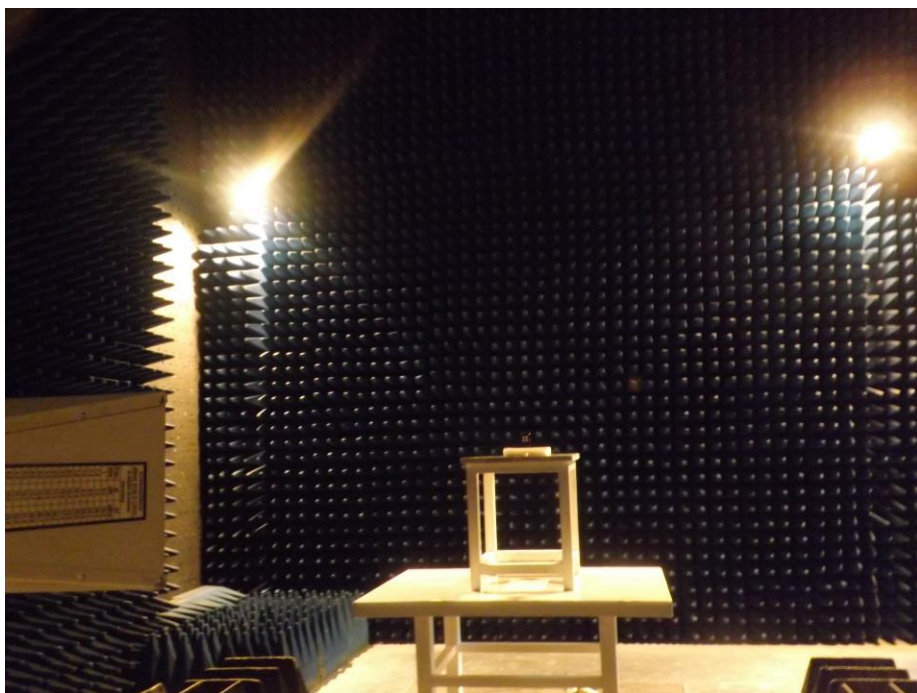
## 12 Photographs – Model TH3 Test Setup Photos

### 12.1 Photograph – Radiation Spurious Emission Test Setup

From 30MHz to 1GHz



From 1GHz to 4GHz



### 13 Photographs - Constructional Details

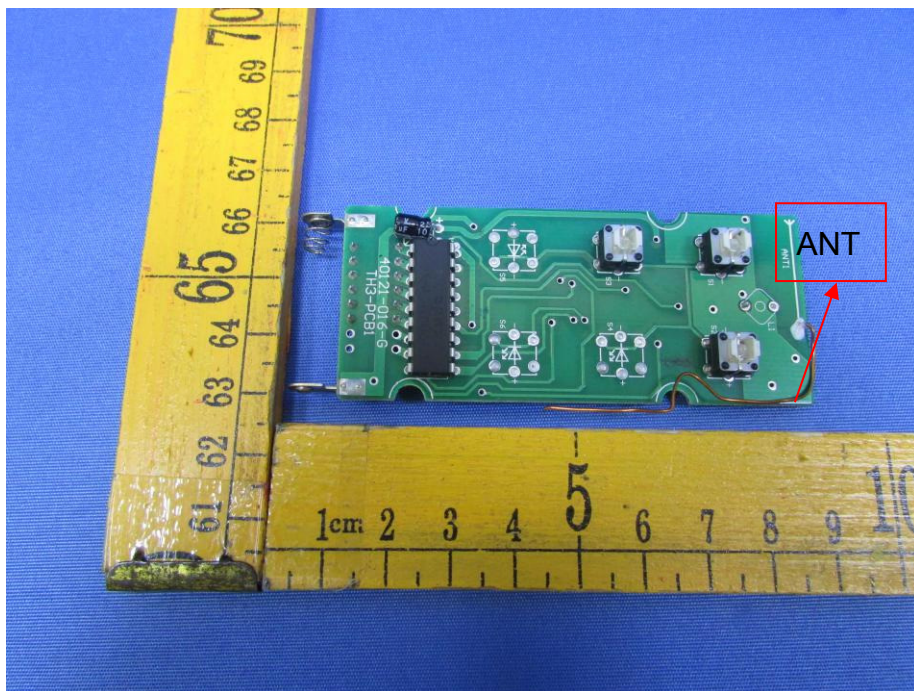
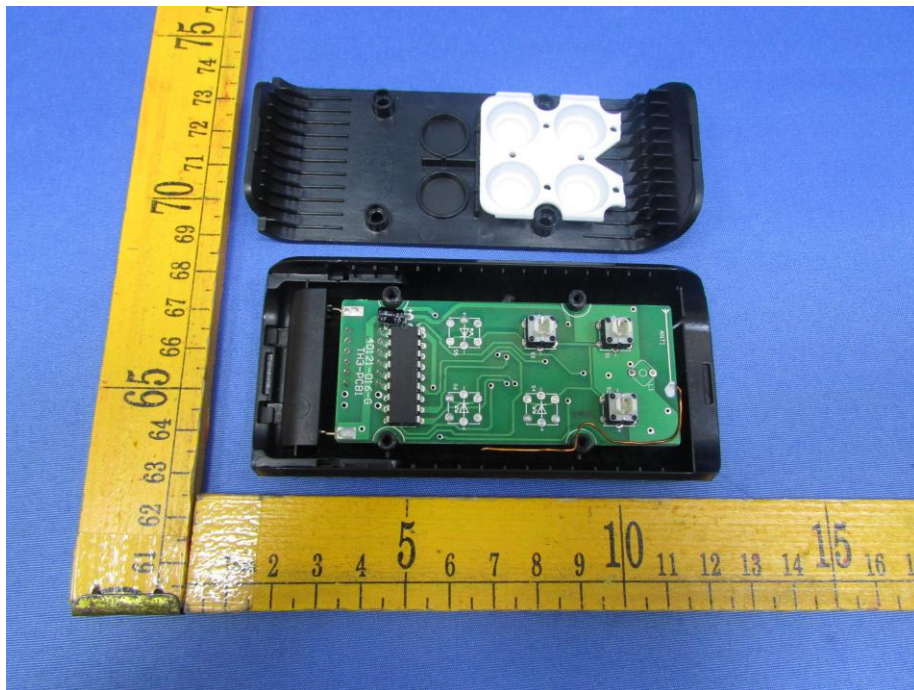
#### 13.1 Model TH3- External Photos



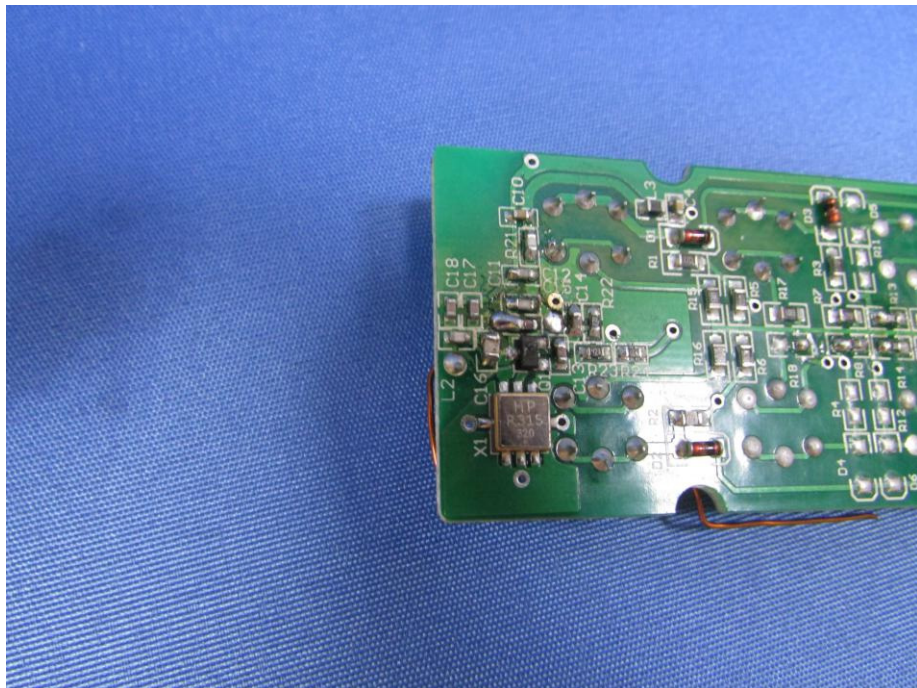
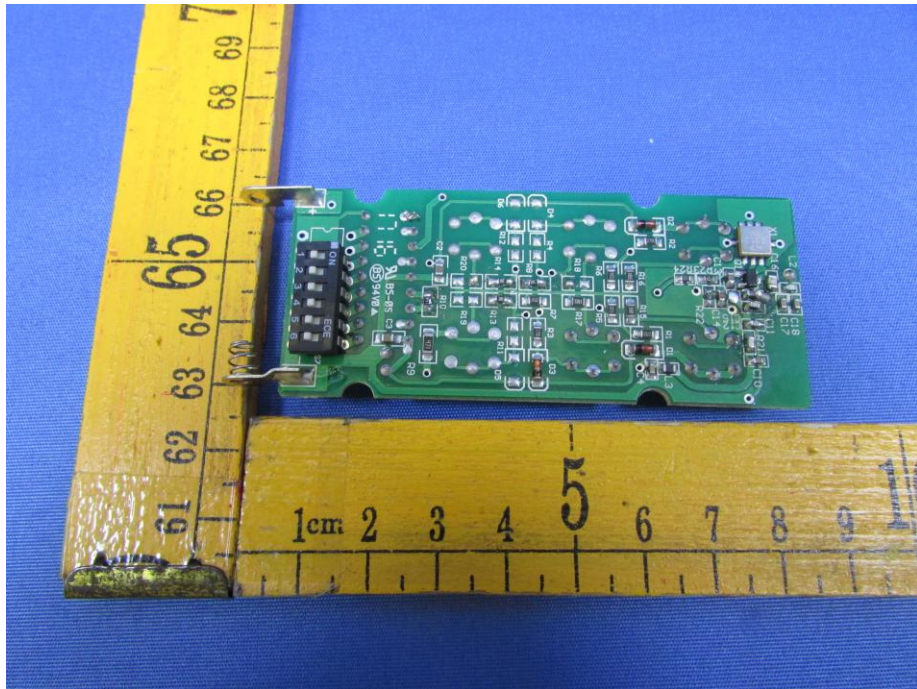




### 13.2 Model TH3- Internal Photos







====End of Report====