

DSS V3
Installation Guide

Contents

1	Introduction to AR-ES5430SM.....	3
	1-1 Description.....	3
	1-2 Packing List.....	3
	1-3 Main system.....	4
2	Procedure of Assembly/Disassembly.....	5
	2-1 Installing the 2.5"Hard Disk Drive(HDD)(SATA & IDE).....	5
	2-2 Installing CF card.....	10
	2-3 Installing SO-DIMM.....	11

1. Introduction to DSS V3 (AR-ES5430SM)

AR-ES5430SM is a system product mainly for ticket control, navigation, advertising, fleet management application. With fanless & dust-proof design, AR-ES5430SM can satisfy the user requirement in any application environment. AR-ES5430SM has diverse physical interface in the front panel, such as pluggable CF card, KB/MS connector, 6 USB Ports, 2 10/100/1000 LAN ports, VGA port, Audio output(3x3.5mm jack, stereo line-in & line-out, mono microphone-in), Two GPIO(2 x 5pin), Two 1394a Connector, One DB9/RS232 Connector, One WIFI Antenna Hole, One Fuse Hole, Input Power connector. In addition, the system provides the capacity for extending I/O device by adding DRAM, CF card depending on users needs.

1.1 Discrimination (included Rubber Foot)

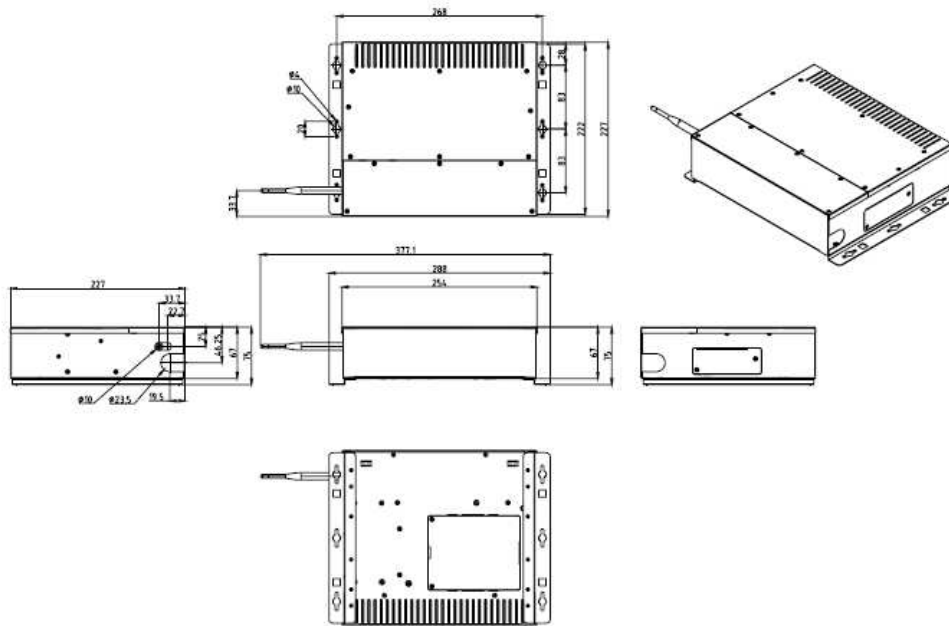
Description	AR-ES5430SM
CPU Board	AR-B5430 series
Dimensions	377.1×227×67 (mm)

1.2 Packing List

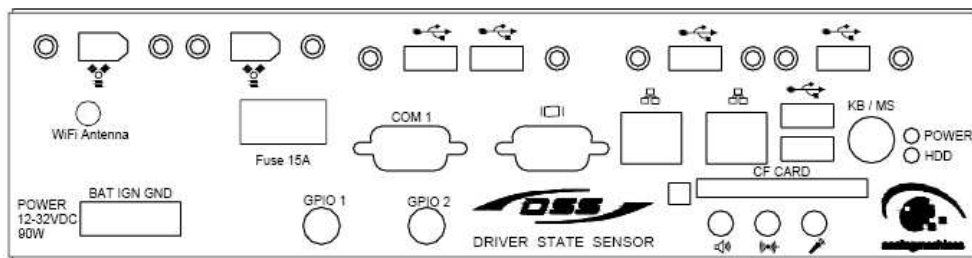
Description	Q'ty
AR-ES5430SM	1
Power Cord	1
KB/MS Cable	1
Mounting bracket	2
Mounting bracket Screw	4
CD	1
Quick User Guide	1

1.3 Main system

(1) Dimension



(2) Outlet (front side board)

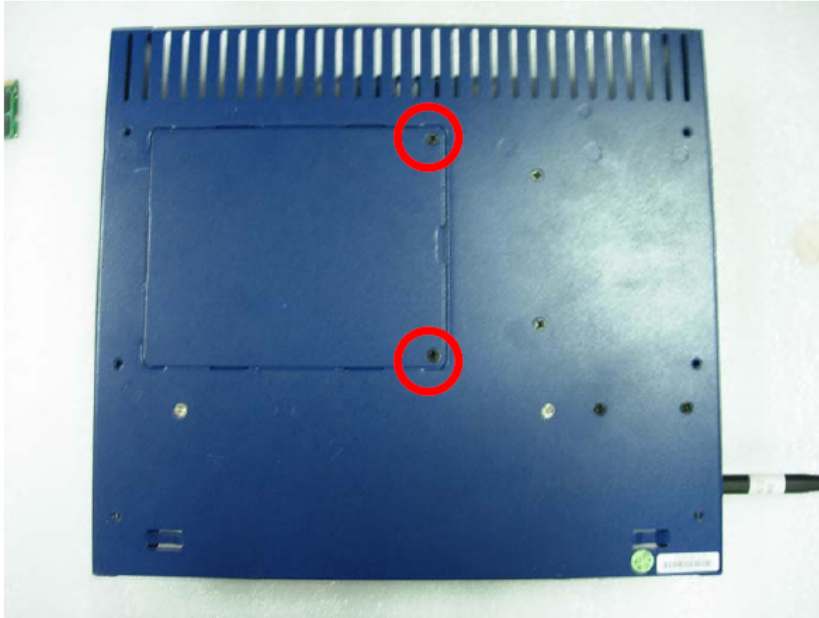


2. Procedure of Assembly/Disassembly

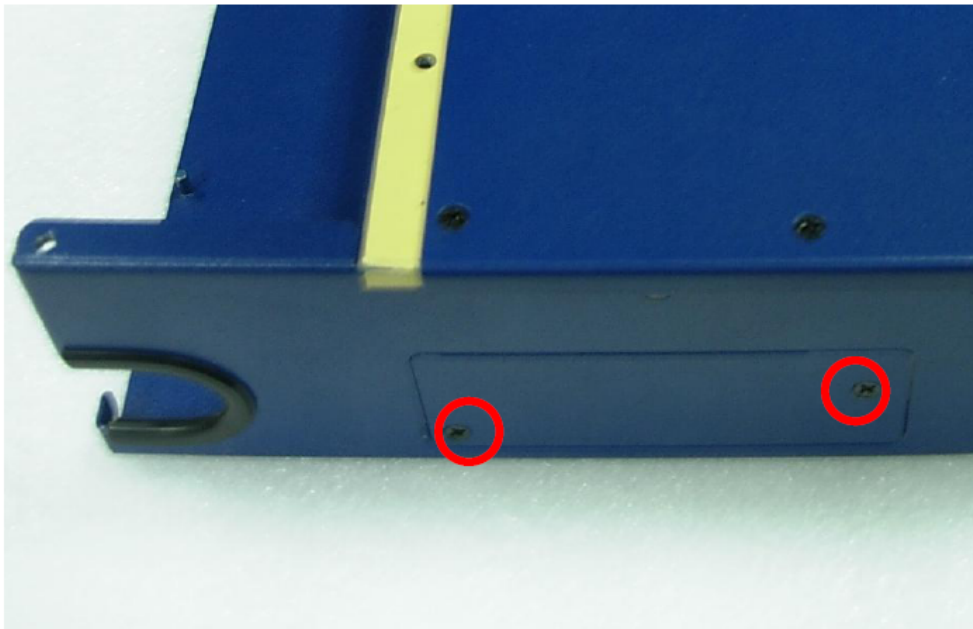
2-1 Installing the 2.5" Hard Disk Drive (HDD)

The following are procedure for install 2.5"HDD device

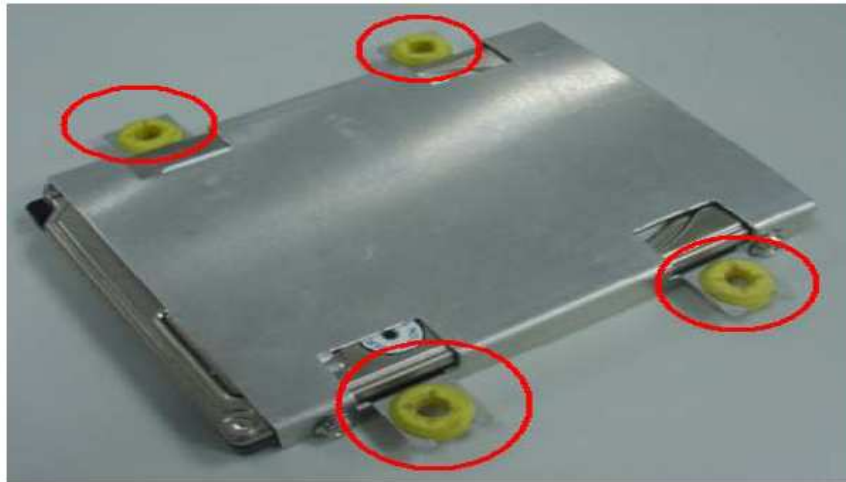
1. Remove bottom door screws (2pcs) in system bottom case



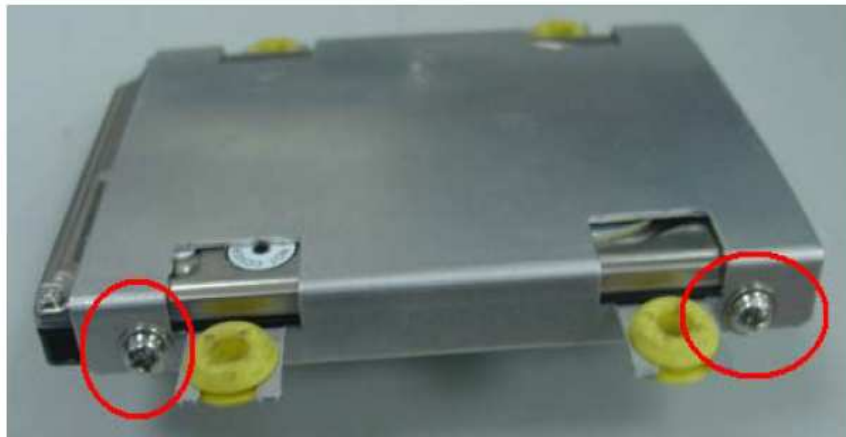
2. Remove right side door screws (2pcs) in system bottom case



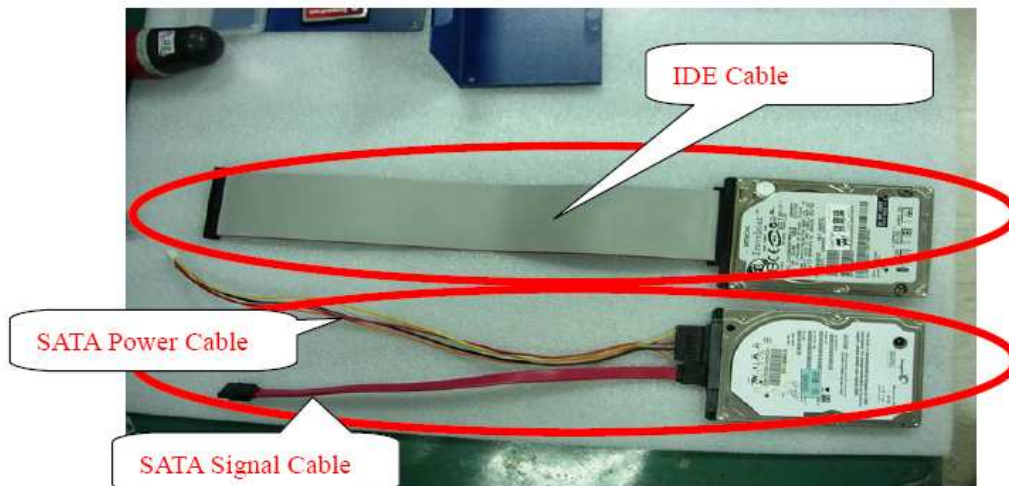
3. Insert the rubbers into the HDD bracket for each edges



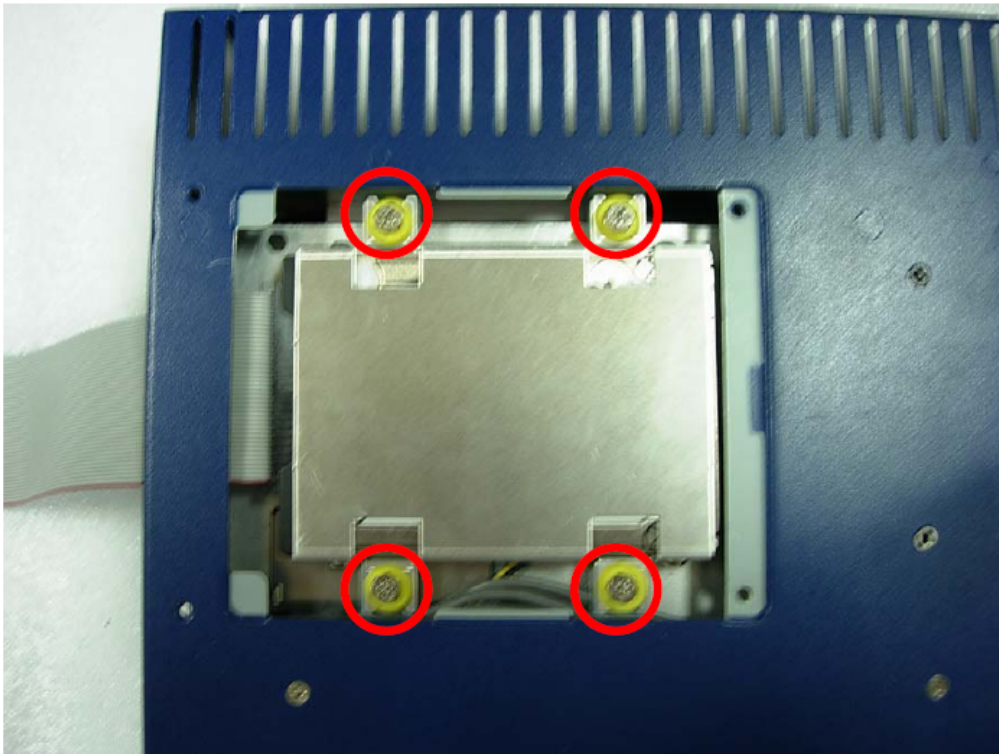
4. Lock HDD and Bracket together via screws (4pcs)



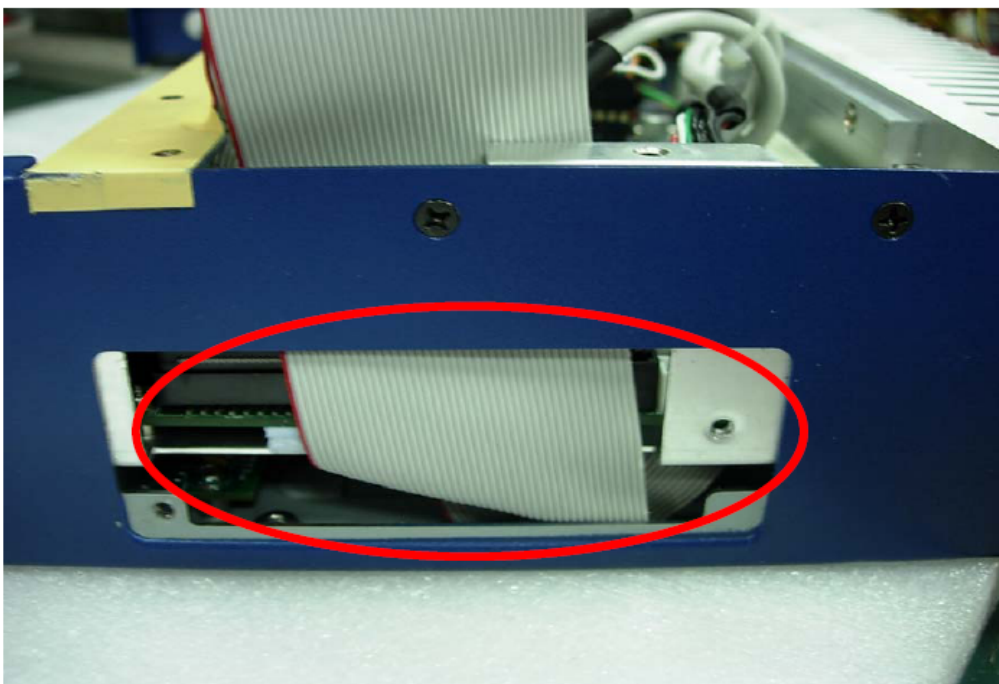
5. Insert HDD cable into the HDD module



6. Lock HDD bracket to the top case by four screws



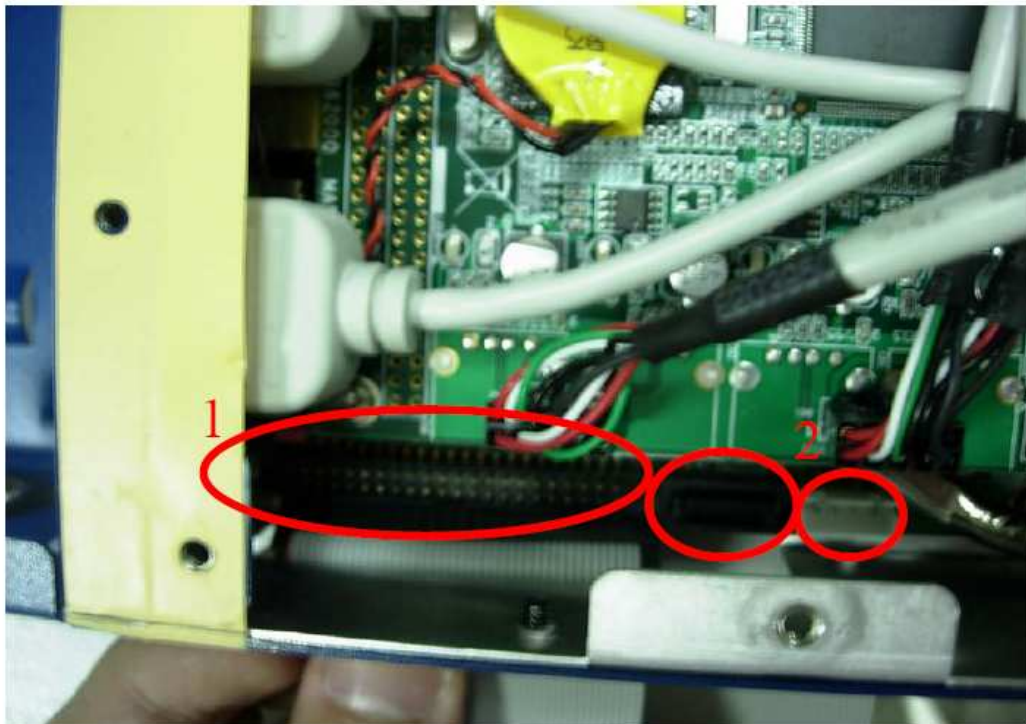
7. Route the HDD cable through the main board



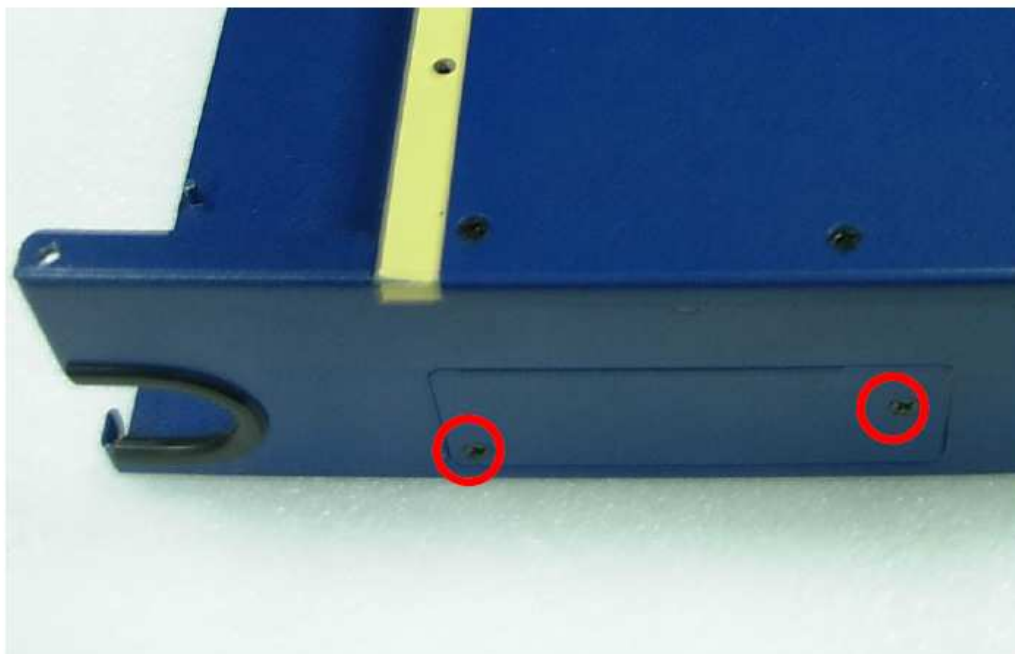
8. Plug the HDD cable :

(1) IDE Cable into the 44-pin header connectors in main board

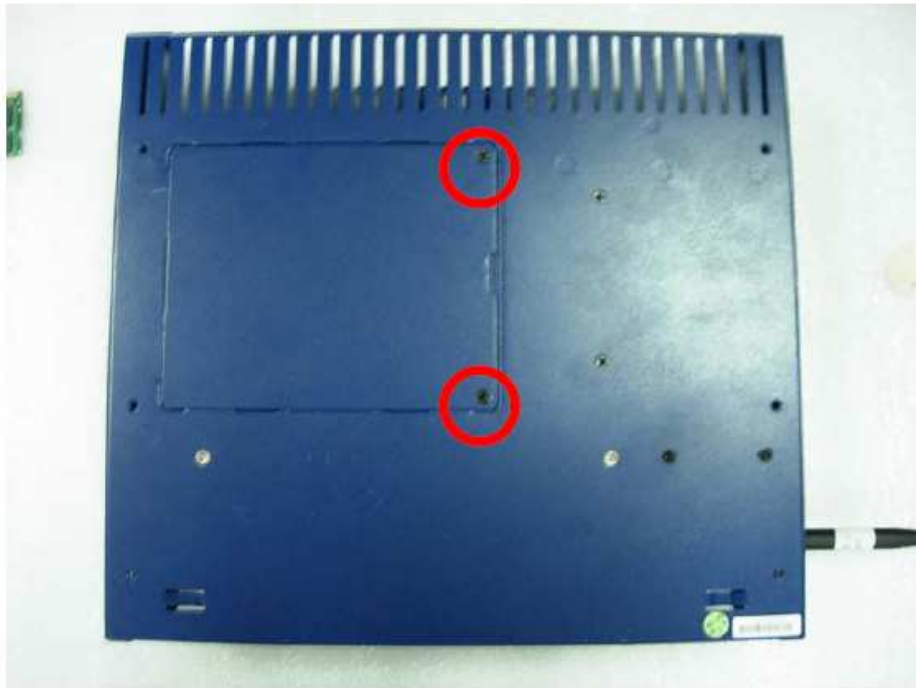
(2) SATA Cable into the SATA Power & SATA Signal header connectors in main board



9. Lock right side door screws (2pcs) in system bottom case



10. Lock bottom door screws (2pcs) in system bottom case



2-2 Installing CF card

The following are procedure for install CF card

1. Insertion CF card to CF card expansion slot



2. Push CF Card Bar to take out CF Card



2-3 Installing SO-DIMM

The following are procedure for install SO-DIMM

1. Remove HDD out from the system
2. Install the SO-DIMM into the SO-DIMM socket



3. Re-Install HDD device
4. Lock the bottom case Door screws

Federal Communication Commission Interference Statement

This equipment has been tested and found to comply with the limits for a Class B digital device, pursuant to Part 15 of the FCC Rules. These limits are designed to provide reasonable protection against harmful interference in a residential installation.

This equipment generates, uses and can radiate radio frequency energy and, if not installed and used in accordance with the instructions, may cause harmful interference to radio communications. However, there is no guarantee that interference will not occur in a particular installation. If this equipment does cause harmful interference to radio or television reception, which can be determined by turning the equipment off and on, the user is encouraged to try to correct the interference by one of the following measures:

- . Reorient or relocate the receiving antenna.
- . Increase the separation between the equipment and receiver.
- . Connect the equipment into an outlet on a circuit different from that to which the receiver is connected.
- . Consult the dealer or an experienced radio/TV technician for help.

FCC Caution: To assure continued compliance, any changes or modifications not expressly approved by the party responsible for compliance could void the user's authority to operate this equipment. (Example - use only shielded interface cables when connecting to computer or peripheral devices).

FCC Radiation Exposure Statement

This equipment complies with FCC RF radiation exposure limits set forth for an uncontrolled environment. This equipment should be installed and operated with a minimum distance of 20 centimeters between the radiator and your body.

This transmitter must not be co-located or operating in conjunction with any other antenna or transmitter.

The antennas used for this transmitter must be installed to provide a separation distance of at least 20 cm from all persons and must not be co-located or operating in conjunction with any other antenna or transmitter.

This device complies with Part 15 of the FCC Rules. Operation is subject to the following two conditions:

- (1) This device may not cause harmful interference, and
- (2) This device must accept any interference received, including interference that may cause undesired operation.