

PICTURES OF BSB00056

FCC ID: W5IBSB00056
IC ID: 8185A-BSB00056

internal pictures

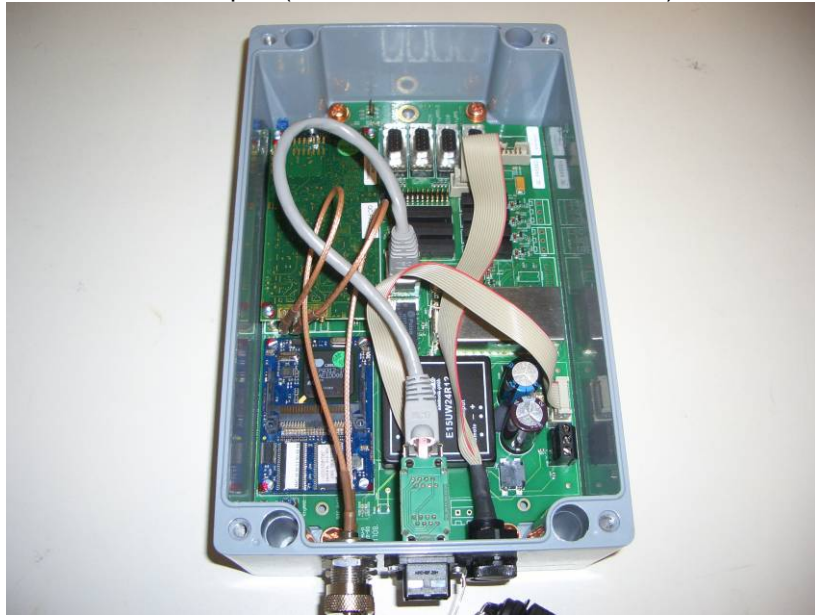
EUT open (version RS232 and relais)



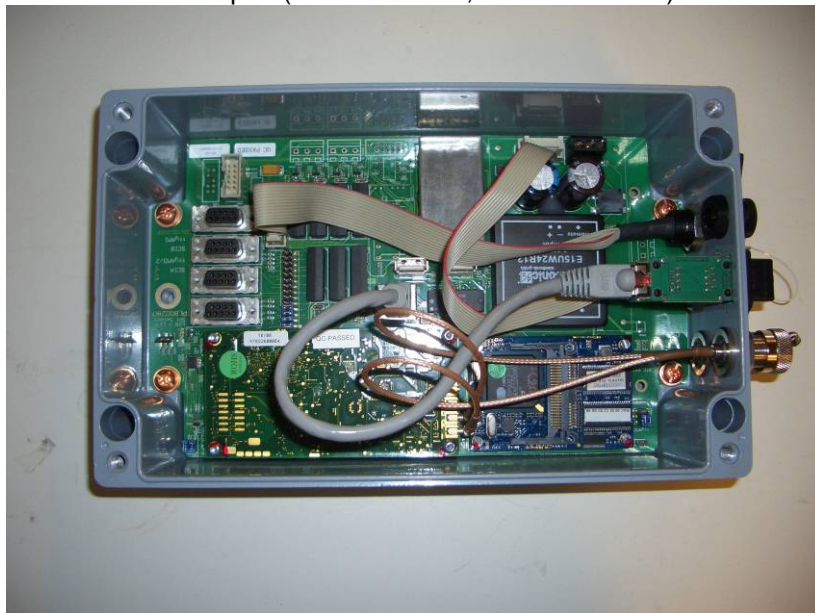
EUT open (version RS232 and relais)



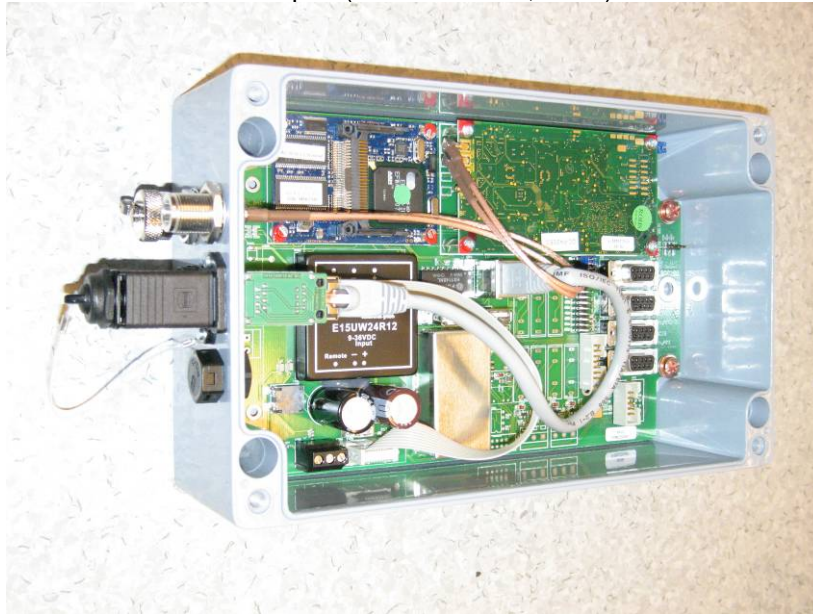
EUT open (version RS232, RJ45 and relais)



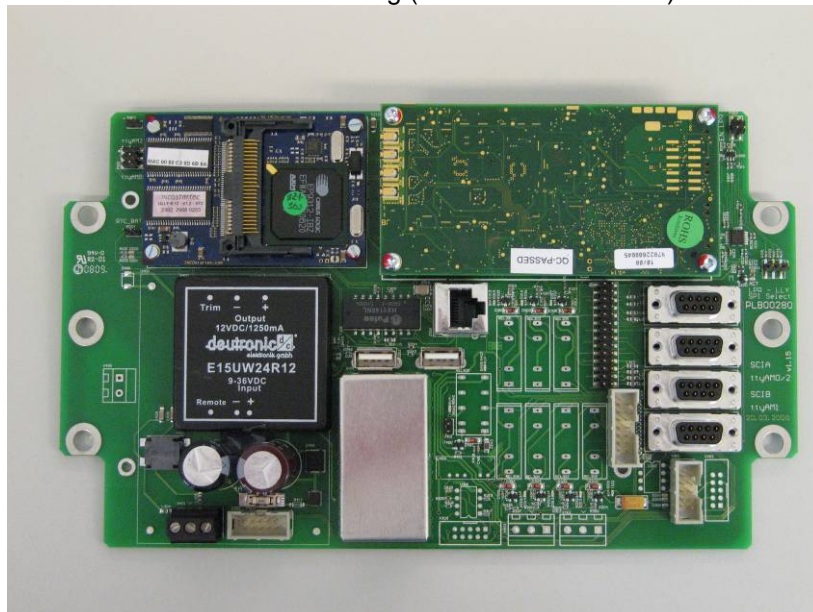
EUT open (version RS232, RJ45 and relais)



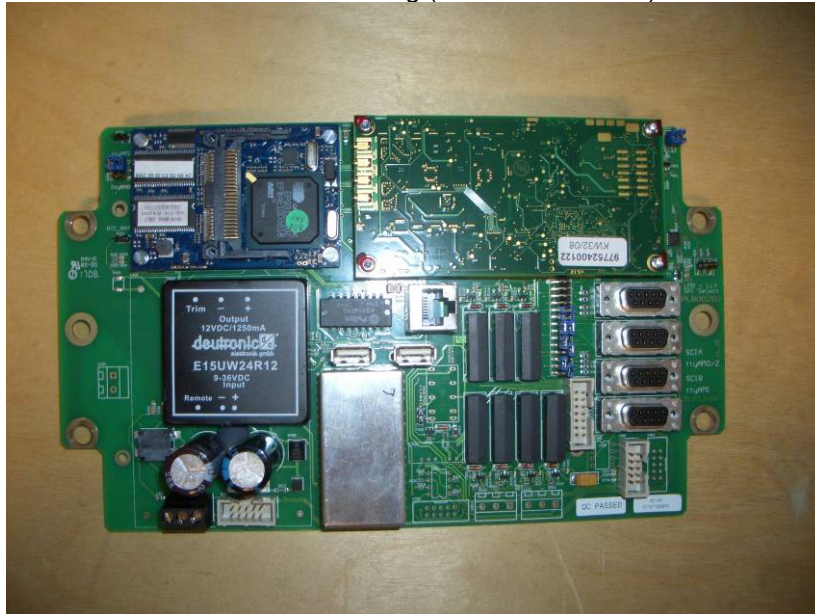
EUT open (version RS232, RJ45)



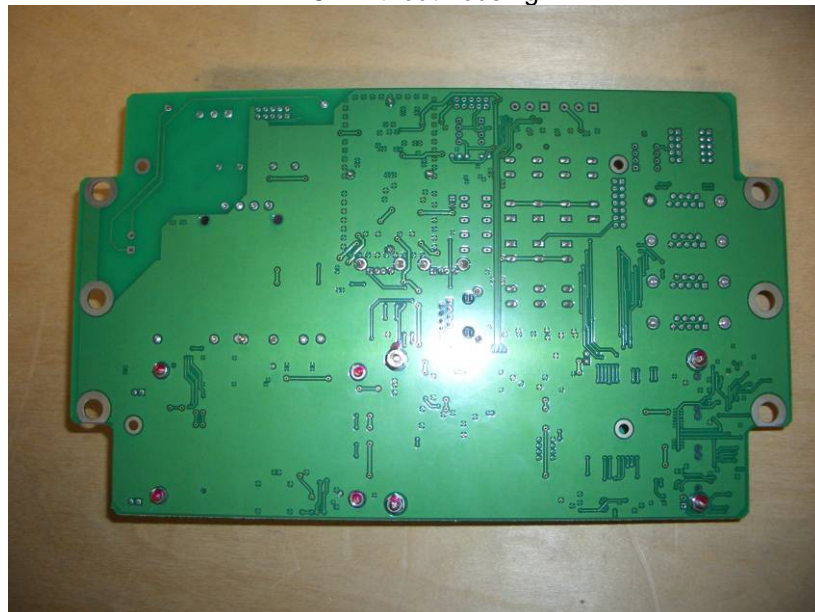
PCB without housing (version without relays)



PCB without housing (version with relays)



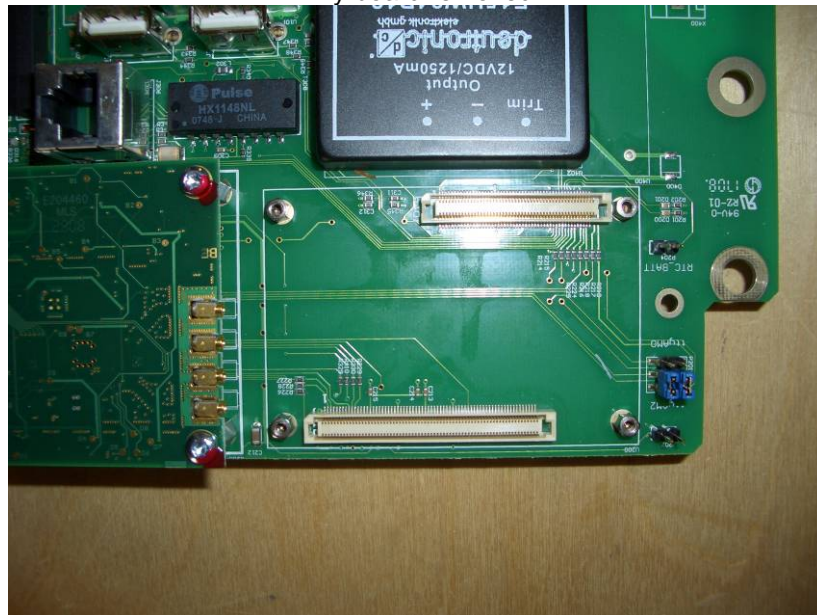
PCB without housing



Detail Lilly board and power supply



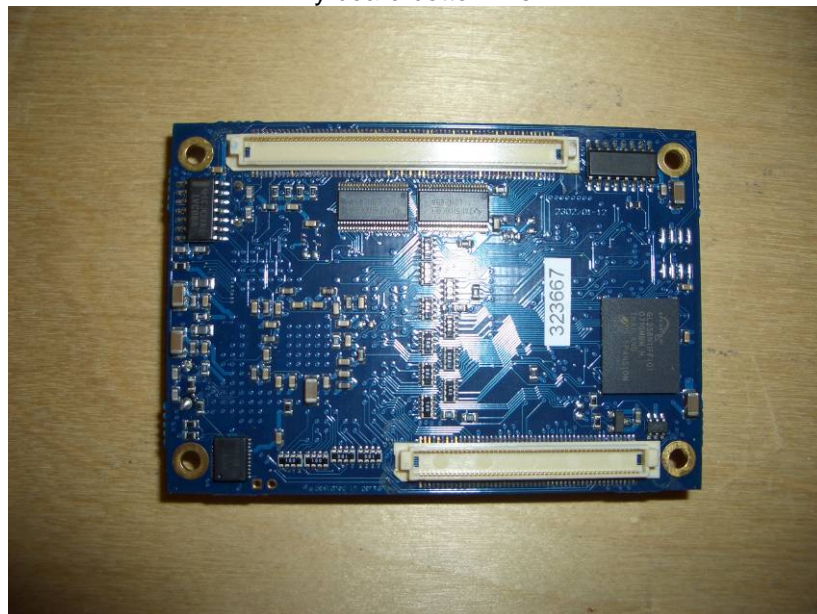
Lilly board removed



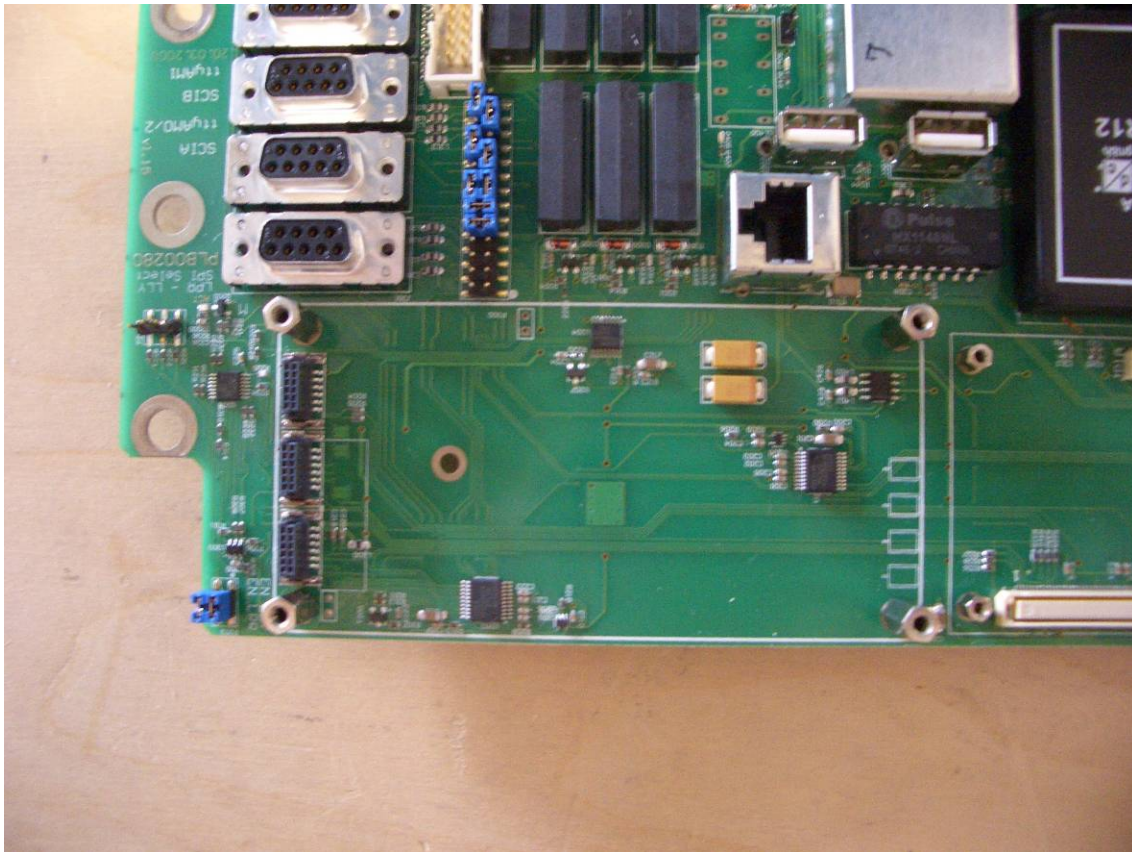
Lilly board top view



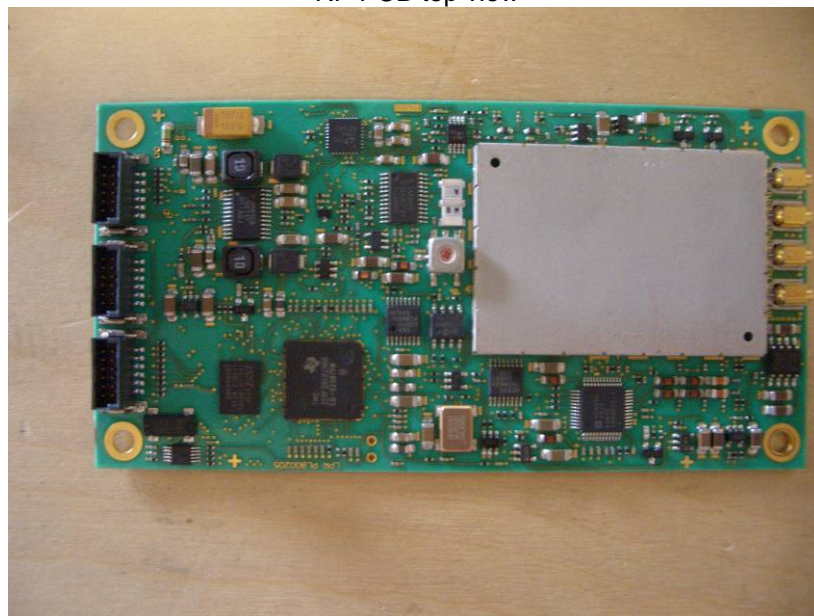
Lilly board bottom view



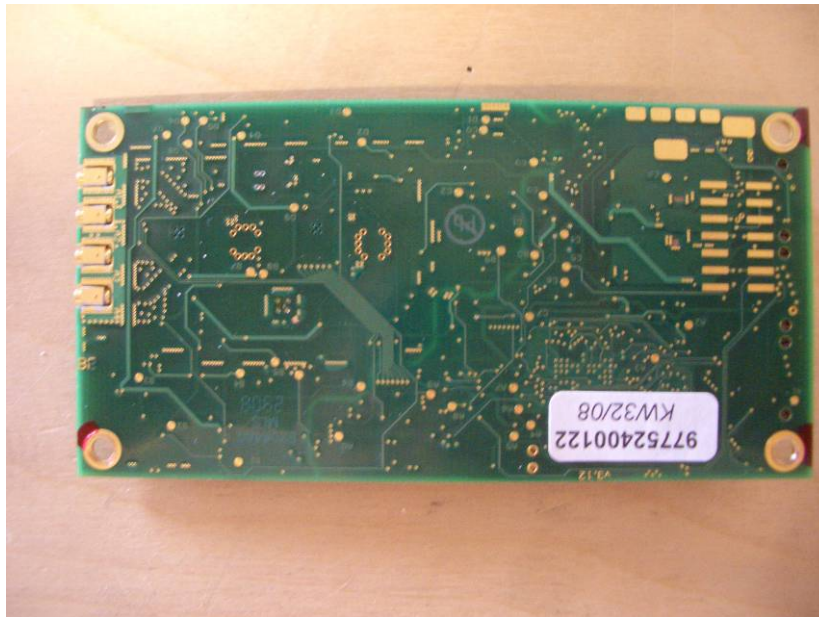
RF-PCB removed



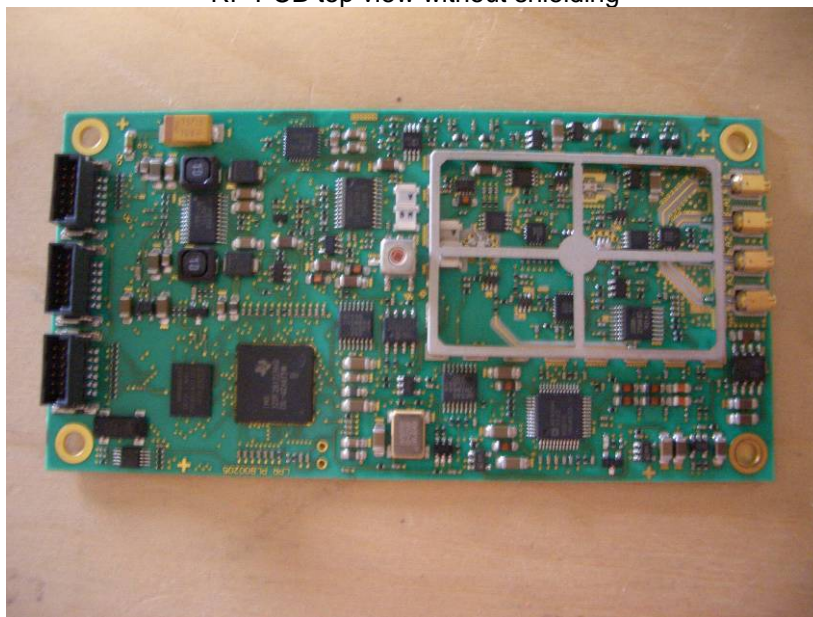
RF-PCB top view



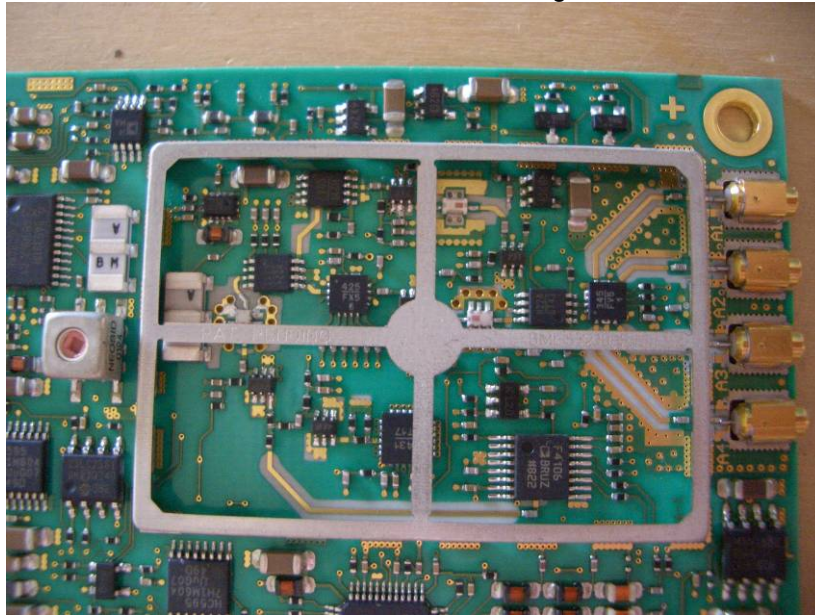
RF-PCB bottom view



RF-PCB top view without shielding



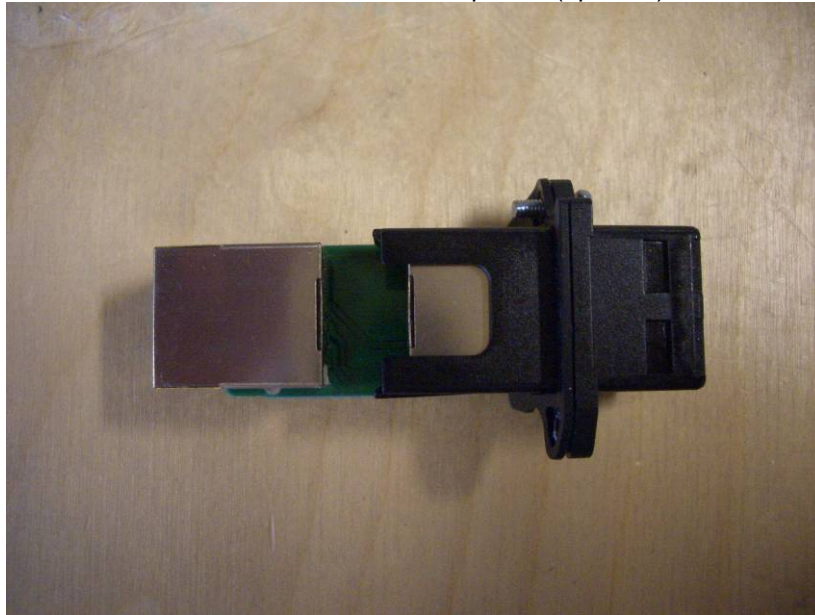
RF-PCB without shielding



Shielding of main PCB removed



PCB for LAN connector top view (optional)



PCB for LAN connector bottom view (optional)

