



翔鑫科技股份有限公司

Oro Technology Co., LTD

**無線胎壓監測器**

**Tire Pressure Monitoring System**

**Model : WT01**

# **ORO WT01 TPMS Manual**

To ensure correct operations and services please read these instructions before installing and operating the TPMS

## **NOTICE**

This device complies with Part 15 of the FCC Rules. Operation is subject to the following two conditions:

(1) This device may not cause harmful interference, and (2) This device must accept any interference received, including interference that may cause undesired operation.

# ORO WT01 TPMS

ORO-WT01 Tire Pressure Monitoring Systems (TPMS), can monitor and provide tire pressure, tire temperature and car battery information in real time to help the driver control and keep the normal tire pressure in order to reduce the fuel consumption and extend the tire life, and also through the battery information, the driver can change the battery before any incident occurs and reduce the possibility of vehicle breakdown on the roads.

ORO-W401 Tire Pressure Monitoring System, includes maximum 11 tire sensors and 1 receiver display, the TPMS can monitor the pressure/temperature by snap-in installation into the tire, and transmit the tire information to the receiver by wireless. The TPMS display will trigger an alarm when any abnormalities happen to the tire in order to prevent any possible accidents which may happen to the driver/vehicle.

## WT01 TPMS Specification

1.. Transmitter Module Specification	
Power Supply	3 V
Operating Humidity	Max 95 %
Storage Temperature	-40°C to 125 °C
Operation Temperature	-30 °C to 115 °C
Transmitting Power	Max 71 dBuv/m
Transmitting Frequency	433.92 MHz
Pressure Monitoring Range	0 ~ 203 psi (or 0 ~ 14 bar)
Pressure Reading Accuracy	±4 psi (±0.27 bar) @ -20°C~85°C±0.3bar
Temperature Monitoring Range	-30 °C to 115 °C
Temperature Reading Accuracy	±3°C
Module Weight	10g ± 1g

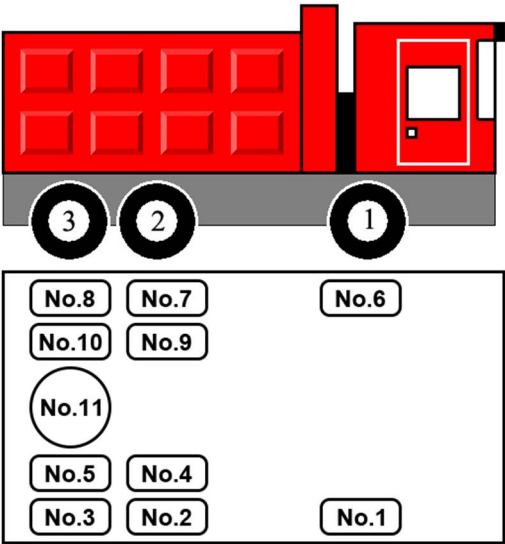
2. Receiver Module Specification	
Power Supply	DC 9V ~ 36V
Operating Humidity	Max 95 %
Operation Current	≤100mA
Storage Temperature	-30°C to 80 °C
Operation Temperature	-20°C to 70 °C
Pressure Display Range	0 ~ 13 bar
Temperature Display Range	-40 °C to 115 °C

## WT01 TPMS Accessories

Accessories	QTY	Accessories	QTY
Display	1	Battery	11
Power Cable	1	Tire Sensor	11
Antenna	1	Lock-Nut	11
Antenna Holder	1	Spanner	1
Adjustable Multi Angle Holder	1	Manual	1
Cable tie	10		

# WT01 TPMS Installation

## 1. Tire Sensor Installation

Step	Operation Process	Photographs
a	Take off the 11 tires and mark 1~11 for each tire position.	
b	Install CR1632 Battery into Tire Sensor ◦	
c	Insert the Lock-Nut into the valve.	
d	Tighten the Tire Sensor and use the spanner to lock the Lock-Nut back to the Tire Sensor and complete the installation.	

※This product is recommended with metal valve or replace the original valve regularly to ensure better quality.

## 2. Display Installation

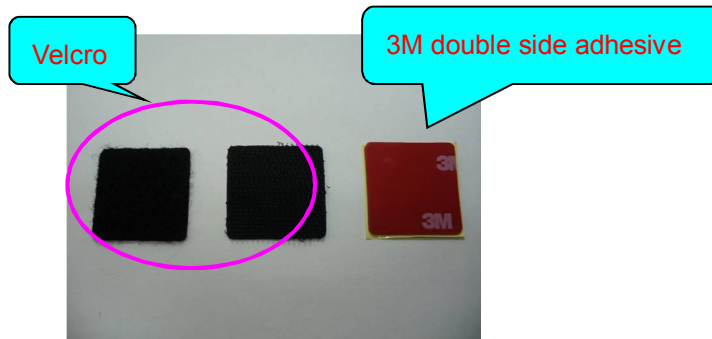
New adjustable multi angle holder (STANDING TYPE) assemble manual:



New adjustable multi angle holder (PASTE TYPE) assemble manual:



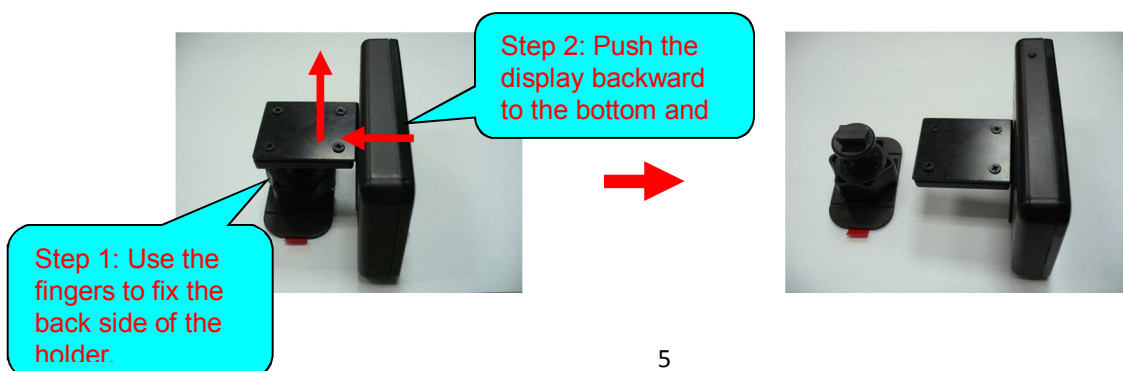
Upon decided where to paste, tear out 3M adhesive from the base and stick on the holder. The user can decide to use the adhesive in the box or 3M double side adhesive:



### NOTE

The display (STAND and PASTE type) shall be 180 degree reverse up and down with opposite direction when is using 3M double side adhesive.

The display and holder still can be separated or combined when the user is using 3M double side adhesive:



- a. Firmly secure the magnetic holder in a suitable place. (Suggested place as shown in the picture)
- b. Put the display on the magnetic holder.
- c. Keep 20cm of distance from GPS; digital TV; speed measure device or other automotive electronic devices while are installing TPMS in order to prevent any possible of interference.



d. Please solder the red cable to the AC power, the black cable is for grounding.