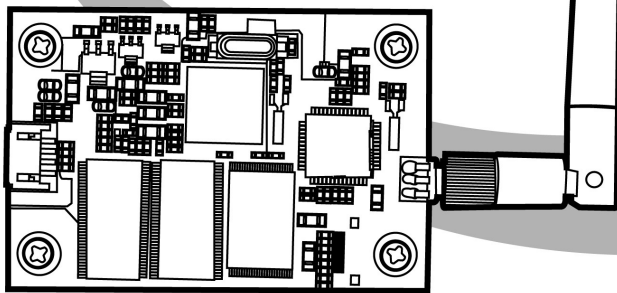




WMB510

Wireless Module

User Manual



HiTi Digital, Inc.
www.hiti.com

Federal Communications Commission (FCC) Statement

15.21

You are cautioned that changes or modifications not expressly approved by the part responsible for compliance could void the user's authority to operate the equipment.

15.105(b)

This equipment has been tested and found to comply with the limits for a Class B digital device, pursuant to part 15 of the FCC rules. These limits are designed to provide reasonable protection against harmful interference in a residential installation. This equipment generates, uses and can radiate radio frequency energy and, if not installed and used in accordance with the instructions, may cause harmful interference to radio communications. However, there is no guarantee that interference will not occur in a particular installation. If this equipment does cause harmful interference to radio or television reception, which can be determined by turning the equipment off and on, the user is encouraged to try to correct the interference by one or more of the following measures:

- Reorient or relocate the receiving antenna.
- Increase the separation between the equipment and receiver.
- Connect the equipment into an outlet on a circuit different from that to which the receiver is connected.
- Consult the dealer or an experienced radio/TV technician for help.

Operation is subject to the following two conditions:

- 1) this device may not cause interference and
- 2) this device must accept any interference, including interference that may cause undesired operation of the device.

FCC RF Radiation Exposure Statement

1. This Transmitter must not be co-located or operating in conjunction with any other antenna or transmitter.
2. This equipment complies with FCC RF radiation exposure limits set forth for an uncontrolled environment. This equipment should be installed and operated with a minimum distance of 20 centimeters between the radiator and your body.

(Also to be included in end-product manual)

Note: The end product exterior shall show the words:

"Contains Transmitter Module FCC ID: W5388D1235000"

Features:

1.0 SAMSUNG MCU S3C2410A-20 1.8V , 200MHz

2.0 32MB NAND Flash memory

3.0 128MB SDRAM memory

4.0 USB 1.1 port x 1 (Pin1 VCC, Pin2 D-, Pin3 D+,Pin4 GND)

5.0 WS178Q/WLAN 802.11b/g SiP Module

3.3V, 1.8V Power Supply

Highly Integrated System in Package (SiP) for IEEE 802.11b/g compatible WLAN

Operates in 2.4GHz frequency bands: 2.412-2.472GHz, 2.484GHz

Data rates of 1-54Mbps for 802.11g

Integrated Atheros AR6001GZ ROCm Integrated high performance Front

End Module (FEM), Band Pass Filter, 40MHz Crystal

4Mbit Flash memory(Flash version)

6.0 Antenna

Frequency range 2400 - 2500 MHz

Gain 2 dBi

VSWR 2.0 : 1 Max.

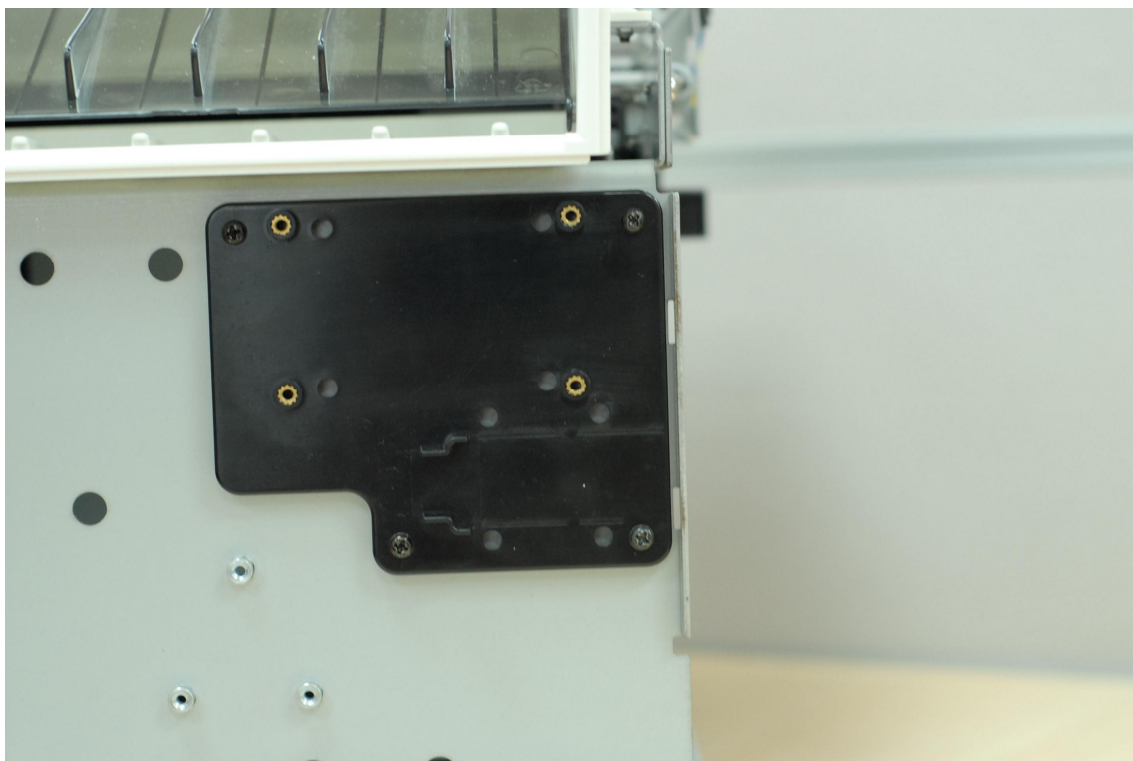
Polarization Linear, vertical

Impedance 50 ohms

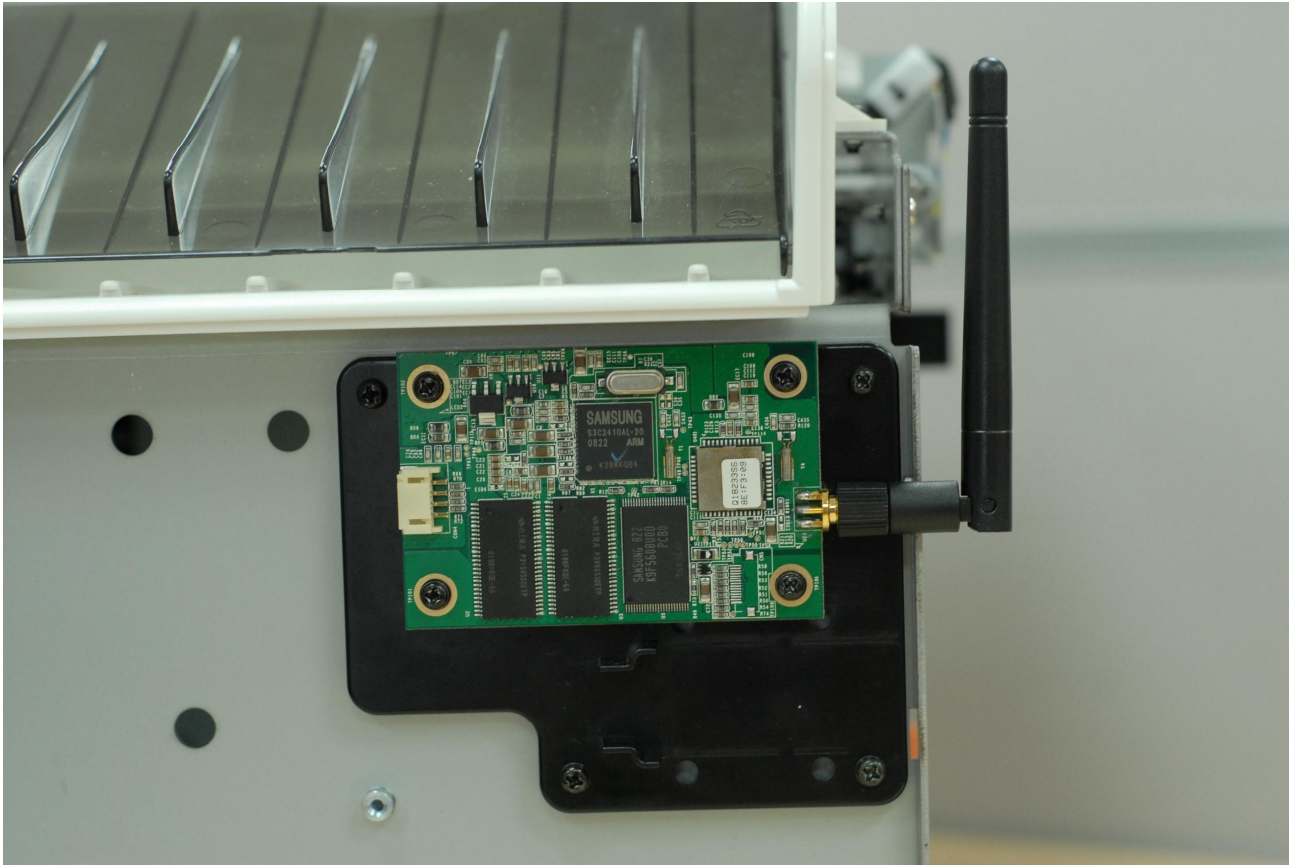
Connector RP SMA plug

Installation:

1.0 Please install a base board on a printer machine and fix with 4 screws as the sample.



2.0 Install a RF module on the base board and fix with 4 screws. Please also connect the aerial to the RF module and fasten the bolt.



3.0 Finally, please connect the electronic cable with RF module. It's done.

