

FCC SAR Test Report

FCC ID: W3QWIFIHDDJEW

Project No. : 1407C061
Equipment : Wi-Fi HDD
Model Name : Wi-Fi HDD/P600
Applicant : Dexxon Data Media
Address : 79 avenue Louis Roche 92238,Gennevilliers Cedex
France

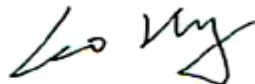
Date of Receipt : Jul. 14, 2014
Date of Test : Jul. 14, 2014 ~ Jul. 22, 2014
Issued Date : Jul. 24, 2014
Tested by : BTL Inc.

Testing Engineer :



(Super Jiang)

Technical Manager :



(Leo Hung)

Authorized Signatory :



(Steven Lu)

B T L I N C .

No.3, Jinshagang 1st Road, Shixia, Dalang Town, Dongguan, China.

TEL: +86-769-8318-3000 FAX: +86-769-8319-6000

Declaration

BTL represents to the client that testing is done in accordance with standard procedures as applicable and that test instruments used has been calibrated with the standards traceable to National Measurement Laboratory (**NML**), or National Institute of Standards and Technology (**NIST**) .

BTL's reports apply only to the specific samples tested under conditions. It is manufacture's responsibility to ensure that additional production units of this model are manufactured with the identical electrical and mechanical components. **BTL** shall have no liability for any declarations, inferences or generalizations drawn by the client or others from **BTL** issued reports.

BTL's reports must not be used by the client to claim product endorsement by the authorities or any agency of the Government.

This report is the confidential property of the client. As a mutual protection to the clients, the public and **BTL-self**, extracts from the test report shall not be reproduced except in full with **BTL's** authorized written approval.

BTL's laboratory quality assurance procedures are in compliance with the **ISO Guide 17025** requirements, and accredited by the conformity assessment authorities listed in this test report.

Limitation

For the use of the authority's logo is limited unless the Test Standard(s)/Scope(s)/Item(s) mentioned in this test report is (are) included in the conformity assessment authorities acceptance respective.

Table of Contents	Page
1 . GENERAL SUMMARY	6
2 . RF EMISSIONS MEASUREMENT	7
2.1 TEST FACILITY	7
2.2 MEASUREMENT UNCERTAINTY	7
3 . GENERAL INFORMATION	8
3.1 GENERAL DESCRIPTION OF EUT	8
3.2 THE MAXIMUM SAR _{1G} VALUES	9
3.3 LABORATORY ENVIRONMENT	9
3.4 MAIN TEST INSTRUMENTS	10
4 . SAR MEASUREMENTS SYSTEM CONFIGURATION	11
4.1 SAR MEASUREMENT SET-UP	11
4.2 DASY5 E-FIELD PROBE SYSTEM	12
5 . TISSUE-EQUIVALENT LIQUID	19
5.1 TISSUE-EQUIVALENT LIQUID INGREDIENTS	19
5.2 TISSUE-EQUIVALENT LIQUID PROPERTIES	19
6 . SYSTEM CHECK	20
6.1 DESCRIPTION OF SYSTEM CHECK	20
6.2 DESCRIPTION OF SYSTEM CHECK	21
7 . OPERATIONAL CONDITIONS DURING TEST	22
7.1 GENERAL DESCRIPTION OF TEST PROCEDURES	22
7.2 TEST POSITION	22
7.2.1 TEST POSITION REQUIREMENTS	22
7.2.2 SAR TEST REDUCTION AND EXCLUSION GUIDANCE	22
8 . TEST RESULT	25
8.1 CONDUCTED POWER RESULTS	25
8.2 SAR TEST RESULTS	27
APPENDIX	28
1. TEST LAYOUT	28
2. SYSTEM CHECK RESULTS	29
3. GRAPH RESULTS	30
4. PROBE CALIBRATION CERTIFICATE	36

Table of Contents	Page
5. (1) D2450V2 DIPOLE CALIBRATION CERTIFICATE	47
6. DAE4 CALIBRATION CERTIFICATE	55
7. EUT TESTING POSITION AND ANTENNA LOCATION	60

REPORT ISSUED HISTORY

Issued No.	Description	Issued Date
BTL-FCC-SAR-1407C061	Original Issue.	Jul. 24, 2014

1. GENERAL SUMMARY

Equipment	Wi-Fi HDD
Model Name	Wi-Fi HDD/P600
Brand Name	EMTEC
Model Difference	N/A
Power Source	#1 Supplied from PC USB port. #2 Supplied from Li-ion Battery.
Power Rating	#1 I/P: 5V 1.5A #2 DC 3.7V 3000mAh
Manufacturer	Dexxon Data Media
Address	79 avenue Louis Roche 92238,Gennevilliers Cedex France
Standard(s)	<p>FCC 47CFR §2.1093 Radio frequency Radiation Exposure Evaluation: Portable Devices</p> <p>ANSI C95.1, 1999 Safety Levels with Respect to Human Exposure to Radio Frequency Electromagnetic Fields, 3 kHz to 300 GHz.(IEEE Std C95.1-1999)</p> <p>IEEE 1528 2013: IEEE Recommended Practice for Determining the Peak Spatial-Average Specific Absorption Rate (SAR) in the Human Head from Wireless Communications Devices: Measurement Techniques</p> <p>KDB 248227 D01 v01r02 SAR meas for 802 11 a b g v01r02: SAR Measurement Procedures for 802.11a/b/g Transmitters</p> <p>KDB 447498 D01 General RF Exposure Guidance v05r02: Mobile and Portable Device RF Exposure Procedures and Equipment Authorization Policies.</p> <p>KDB 865664 D01 SAR measurement 100 MHz to 6GHz v01r03: SAR Measurement Requirements for 100MHz to 6GHz</p>

The above equipment has been tested and found compliance with the requirement of the relative standards by BTL Inc.

The test data, data evaluation, and equipment configuration contained in our test report (Ref No. BTL-FCC-SAR-1407C061) were obtained utilizing the test procedures, test instruments, test sites that has been accredited by the Authority of TAF according to the ISO-17025 quality assessment standard and technical standard(s).

2. RF EMISSIONS MEASUREMENT

2.1 TEST FACILITY

The test facilities used to collect the test data in this report is **SAR room** at the location of No.3,Jinshagang 1st Road, ShiXia, Dalang Town, Dong Guan, China.523792

2.2 MEASUREMENT UNCERTAINTY

Uncertainty Component	Uncertainty Value	Probability Distribution	Divisor	C _i (1g)	Standard Uncertainty ±1%	V _i or V _{eff}
Measurement System						
Probe Calibration (k=1)	5.9	Normal	1	1	5.9	∞
Axial Isotropy	4.7	Rectangular	$\sqrt{3}$	$\sqrt{0.5}$	1.9	∞
Hemispherical Isotropy	9.6	Rectangular	$\sqrt{3}$	$\sqrt{0.5}$	3.9	∞
Boundary Effect	1.0	Rectangular	$\sqrt{3}$	1	0.6	∞
Linearity	4.7	Rectangular	$\sqrt{3}$	1	2.7	∞
System Detection Limit	1.0	Rectangular	$\sqrt{3}$	1	0.6	∞
Readout Electronics	0.3	Normal	1	1	0.3	∞
Response Time	0.8	Rectangular	$\sqrt{3}$	1	0.5	∞
Integration Time	2.6	Rectangular	$\sqrt{3}$	1	1.5	∞
RF Ambient Conditions-Noise	3.0	Rectangular	$\sqrt{3}$	1	1.7	∞
RF Ambient Reflections	3.0	Rectangular	$\sqrt{3}$	1	1.7	∞
Probe Positioner Mechanical Tolerance	0.4	Rectangular	$\sqrt{3}$	1	0.2	∞
Probe Positioning with respect to Phantom Shell	2.9	Rectangular	$\sqrt{3}$	1	1.7	∞
Extrapolation, interpolation and integration Algorithms for Max. SAR Evaluation	1.0	Rectangular	$\sqrt{3}$	1	0.6	∞
Test Sample Related						
Test sample Positioning	2.9	Normal	1	1	2.9	145
Device Holder Uncertainty	3.6	Normal	1	1	3.6	5
Output Power Variation - SAR drift measurement	5.0	Rectangular	$\sqrt{3}$	1	2.9	∞
Phantom and Setup						
Phantom Uncertainty (shape and thickness tolerances)	4.0	Rectangular	$\sqrt{3}$	1	2.3	∞
Liquid Conductivity - deviation from target values	5.0	Rectangular	$\sqrt{3}$	0.64	1.8	∞
Liquid Conductivity - measurement uncertainty	2.5	Normal	1	0.64	1.6	∞
Liquid Permittivity - deviation from target values	5.0	Rectangular	$\sqrt{3}$	0.6	1.7	∞
Liquid Permittivity - measurement uncertainty	2.5	Normal	1	0.6	1.5	∞
Combined standard uncertainty		RSS	-	-	10.9	387
Expanded uncertainty		k=2	-	-	21.9	-

3. GENERAL INFORMATION

3.1 GENERAL DESCRIPTION OF EUT


Tested Mode(s)	WiFi(802.11b/g/ n)
Operation Frequency	2412 MHz ~2462 MHz
Modulation Technology	802.11b:DSSS 802.11g:OFDM 802.11n:OFDM
Bit Rate of Transmitter	802.11b (DSSS, CCK) 1, 2, 5.5, 11 Mbps 802.11g (OFDM) 6, 9, 12, 18, 24, 36, 48, 54 Mbps 802.11n (OFDM, MCS 0-7) 6.5, 7.2, 13.0, 14.4, 19.5, 21.7, 26.0, 28.9, 39.0, 43.3, 52.0, 57.8, 58.5, 65.0, 72.2 up to 150 Mbps
Number Of Channel	Please refer to note 1
Antenna Type	Please refer to note 2
Hard Disk	Please refer to note 3

Note:

1. Channel List

802.11b / g / n 20MHz/n 40MHz							
CH 01 – CH 11 for 802.11b, 802.11g, 802.11n(20MHz)							
CH 03 – CH 09 for 802.11n(40MHz)							
Channel	Frequency (MHz)	Channel	Frequency (MHz)	Channel	Frequency (MHz)	Channel	Frequency (MHz)
01	2412	04	2427	07	2442	10	2457
02	2417	05	2432	08	2447	11	2462
03	2422	06	2437	09	2452		

2. Table for Filed Antenna

Ant.	Brand	Mode No.	Antenna Type	Connector	Gain (dBi)	Note
1	 Eternal-Chip Semiconductor	2450AT18A100	Chip	N/A	0.5	TX/RX

3. Hard Disk Information

Number	Brand	Mode No.	Rotate Speed	Interface	Capacity
HD1	HGST	HTS545050A7E380	5400	3.0Gb/s SATA	500GB
HD2	HGST	HTS541010A9E680	5400	6.0Gb/s SATA	1TB
HD3	Seagate	ST500LT012	5400	NA	500GB

3.2 THE MAXIMUM SAR_{1G} VALUES

Body SAR Configuration

Test Mode	Frequency (MHz)	Test Position	Separation Distance	Limit SAR _{1g} 1.6W/kg	
				Measured Result SAR _{1g} (W/kg)	Reported Result SAR _{1g} (W/kg)
802.11b	2412	Test Position 2	0mm	0.228	0.25700

3.3 LABORATORY ENVIRONMENT

Temperature	Min. = 18°C, Max. = 25°C
Relative humidity	Min. = 30%, Max. = 70%
Ground system resistance	< 0.5Ω
Ambient noise is checked and found very low and in compliance with requirement of standards.	
Reflection of surrounding objects is minimized and in compliance with requirement of standards.	

3.4 MAIN TEST INSTRUMENTS

Item	Kind of Equipment	Manufacturer	Type No.	Serial No.	Calibrated until
1	Data Acquisition Electronics	Speag	DAE4	1390	Sep. 09, 2014
2	E-field Probe	Speag	EX3DV4	3932	Sep. 15, 2014
3	Electro Optical Converter	Speag	ECO90	1151	N/A
4	ELI Phantom	Speag	ELI Phantom V5.0	1222	N/A
5	System Validation Dipole	Speag	D2450V2	919	Sep. 05, 2014
6	Power Amplifier	Speag	ZHL-42W	N/A	N/A
7	Power Amplifier	Speag	ZVE-8G	N/A	N/A
8	ENA Network Analyzer	Agilent	E5071C	MY46102965	Mar. 29, 2015
9	Dielectric Probe Kit	Agilent	85070E	2593	N/A
10	P-series power meter	Agilent	N1911A	MY45100473	Mar. 29, 2015
11	wideband power sensor	Agilent	N1921A	MY51100041	Mar. 29, 2015
12	Power Meter	Anritsu	ML2487A	6K00004714	Mar. 16, 2015
13	Power Meter Sensor	Anritsu	MA2491A	34138	Mar. 16, 2015
14	MXG Analog Signal Generator	Agilent	N5181A	MY49060710	Nov. 09, 2014

Remark: " N/A" denotes no model name, serial No. or calibration specified.
 All calibration period of equipment list is one year.

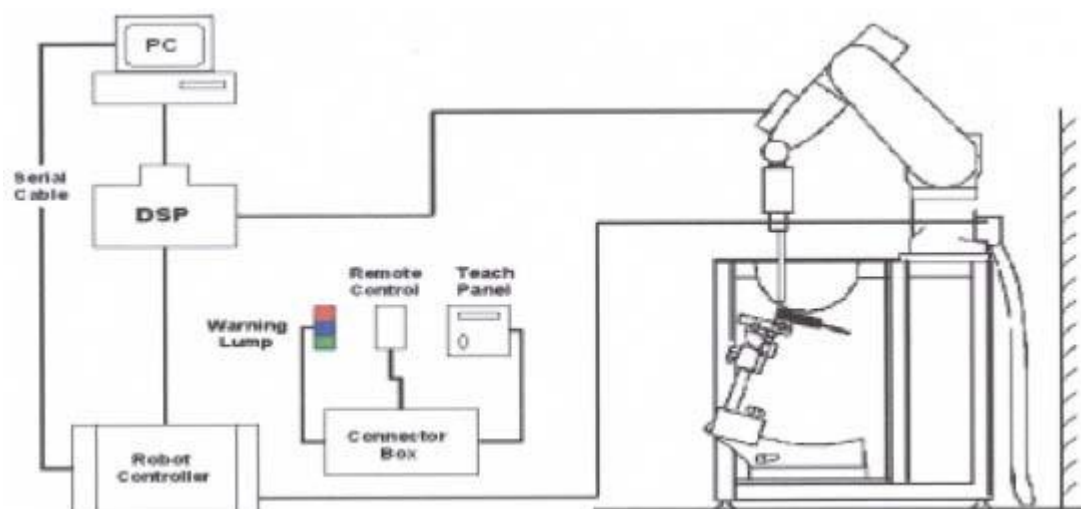
4. SAR MEASUREMENTS SYSTEM CONFIGURATION

4.1 SAR MEASUREMENT SET-UP

The DASY5 system for performing compliance tests consists of the following items:

1. A standard high precision 6-axis robot (Stäubli RX family) with controller and software. An arm extension for accommodating the data acquisition electronics (DAE).
2. A dosimetric probe, i.e. an isotropic E-field probe optimized and calibrated for usage in tissue simulating liquid. The probe is equipped with an optical surface detector system.
3. A data acquisition electronic (DAE) which performs the signal amplification, signal multiplexing, AD-conversion, offset measurements, mechanical surface detection, collision detection, etc. The unit is battery powered with standard or rechargeable batteries. The signal is optically transmitted to the EOC.
4. A unit to operate the optical surface detector which is connected to the EOC.
5. The Electro-Optical Coupler (EOC) performs the conversion from the optical into a digital electric signal of the DAE. The EOC is connected to the DASY5 measurement server.
6. The DASY5 measurement server, which performs all real-time data evaluation for field measurements and surface detection, controls robot movements and handles safety operation. A computer operating Windows 7
7. DASY5 software and SEMCAD data evaluation software.
8. Remote control with teach panel and additional circuitry for robot safety such as warning lamps, etc.
9. The generic twin phantom enabling the testing of left-hand and right-hand usage.
10. The device holder for handheld mobile phones.
11. Tissue simulating liquid mixed according to the given recipes.
12. System validation dipoles allowing to validate the proper functioning of the system.

4.1.1 Test Setup Layout



4.2 DASY5 E-FIELD PROBE SYSTEM

The SAR measurements were conducted with the dosimetric probe ES3DV3 (manufactured by SPEAG), designed in the classical triangular configuration and optimized for dosimetric evaluation.

4.2.1 ES3DV3 PROBE SPECIFICATION

Construction	Symmetrical design with triangular core Interleaved sensors Built-in shielding against static charges PEEK enclosure material (resistant to organic solvents, e.g., DGBE)
Calibration	ISO/IEC 17025 calibration service available
Frequency	10 MHz to 4 GHz Linearity: ± 0.2 dB (30 MHz to 4 GHz)
Directivity	± 0.2 dB in HSL (rotation around probe axis) ± 0.3 dB in tissue material (rotation normal to probe axis)
Dynamic Range	5 μ W/g to > 100 mW/g Linearity: ± 0.2 dB
Dimensions	Overall length: 330 mm (Tip: 20 mm) Tip diameter: 3.9 mm (Body: 12 mm) Distance from probe tip to dipole centers: 2.0 mm



EX3DV4 E-field Probe

4.2.2 E-FIELD PROBE CALIBRATION

Each probe is calibrated according to a dosimetric assessment procedure with accuracy better than $\pm 10\%$. The spherical isotropy was evaluated and found to be better than $\pm 0.25\text{dB}$. The sensitivity parameters (NormX, NormY, NormZ), the diode compression parameter (DCP) and the conversion factor (ConvF) of the probe are tested.

The free space E-field from amplified probe outputs is determined in a test chamber. This is performed in a TEM cell for frequencies below 1 GHz, and in a wave guide above 1 GHz for free space. For the free space calibration, the probe is placed in the volumetric center of the cavity and at the proper orientation with the field. The probe is then rotated 360 degrees.

E-field temperature correlation calibration is performed in a flat phantom filled with the appropriate simulated brain tissue. The measured free space E-field in the medium correlates to temperature rise in a dielectric medium. For temperature correlation calibration a RF transparent thermistor-based temperature probe is used in conjunction with the E-field probe.

$$\text{SAR} = C \frac{\Delta T}{\Delta t}$$

Where: Δt = Exposure time (30 seconds),

C = Heat capacity of tissue (brain or muscle),

ΔT = Temperature increase due to RF exposure.

Or
$$\text{SAR} = \frac{|E|^2 \sigma}{\rho}$$

Where: σ = Simulated tissue conductivity,

ρ = Tissue density (kg/m^3).

4.2.3 OTHER TEST EQUIPMENT

4.2.3.1. Device Holder for Transmitters

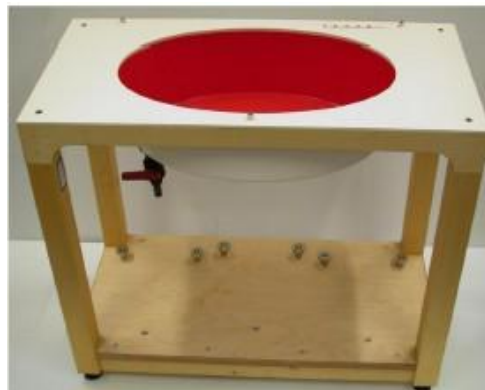
Construction: Simple but effective and easy-to-use extension for Mounting Device that facilitates the testing of larger devices (e.g., laptops, cameras, etc.) It is lightweight and fits easily on the upper part of the Mounting Device in place of the phone positioner. The extension is fully compatible with the Twin SAM, ELI4 and SAM v6.0 Phantoms.

Material: POM, Acrylic glass, Foam

4.2.3.2 Phantom

Phantom for compliance testing of handheld and body-mounted wireless devices in the frequency range of 30 MHz to 6 GHz. ELI is fully compatible all known tissuesimulating liquids. ELI has been optimized regarding its performance and can be integrated into our standard phantom tables. A cover prevents evaporation of the liquid. Reference markings on the phantom allow installation of the complete setup, including all predefined phantom positions and measurement grids, by teaching three points. The phantom is compatible with all SPEAG dosimetric probes and dipoles.

Shell Thickness	2±0.1 mm
Filling Volume	Approx. 30 liters
Dimensions	190 X 600 X 0 mm (H x L x W)
Aailable	Special



ELI4 Phantom

4.2.4 SCANNING PROCEDURE

The DASY5 installation includes predefined files with recommended procedures for measurements and validation. They are read-only document files and destined as fully defined but unmeasured masks. All test positions (head or body-worn) are tested with the same configuration of test steps differing only in the grid definition for the different test positions.

The “reference” and “drift” measurements are located at the beginning and end of the batch process. They measure the field drift at one single point in the liquid over the complete procedure. The indicated drift is mainly the variation of the DUT’s output power and should vary max. $\pm 5\%$.

The “surface check” measurement tests the optical surface detection system of the DASY5 system by repeatedly detecting the surface with the optical and mechanical surface detector and comparing the results. The output gives the detecting heights of both systems, the difference between the two systems and the standard deviation of the detection repeatability. Air bubbles or refraction in the liquid due to separation of the sugar-water mixture gives poor repeatability (above $\pm 0.1\text{mm}$). To prevent wrong results tests are only executed when the liquid is free of air bubbles. The difference between the optical surface detection and the actual surface depends on the probe and is specified with each probe. (It does not depend on the surface reflectivity or the probe angle to the surface within $\pm 30^\circ$.)

- Area Scan

The Area Scan is used as a fast scan in two dimensions to find the area of high field values before running a detailed measurement around the hot spot. Before starting the area scan a grid spacing of 10 mm x 10 mm is set. During the scan the distance of the probe to the phantom remains unchanged. After finishing area scan, the field maxima within a range of 2 dB will be ascertained.

- Zoom Scan

Zoom Scans are used to estimate the peak spatial SAR values within a cubic averaging volume containing 1 g and 10 g of simulated tissue. The default Zoom Scan is done by 7x7x7 points within a cube whose base is centered around the maxima found in the preceding area scan.

- Spatial Peak Detection

The procedure for spatial peak SAR evaluation has been implemented and can determine values of masses of 1g and 10g, as well as for user-specific masses. The DASY5 system allows evaluations that combine measured data and robot positions, such as:

- maximum search
- extrapolation
- boundary correction
- peak search for averaged SAR

During a maximum search, global and local maxima searches are automatically performed in 2-D after each Area Scan measurement with at least 6 measurement points. It is based on the evaluation of the local SAR gradient calculated by the Quadratic Shepard’s method. The algorithm will find the global maximum and all local maxima within -2 dB of the global maxima for all SAR distributions.

Extrapolation routines are used to obtain SAR values between the lowest measurement points and the inner phantom surface. The extrapolation distance is determined by the surface detection distance and the probe sensor offset. Several measurements at different distances are necessary for the extrapolation. Extrapolation routines require at least 10 measurement points in 3-D space. They are used in the Zoom Scan to obtain SAR values between the lowest measurement points and the inner phantom surface. The routine uses the modified Quadratic Shepard’s method for extrapolation. For a grid using 7x7x7 measurement points with 5mm resolution amounting to 343 measurement points, the uncertainty of the extrapolation routines is less than 1% for 1g and 10g cubes.

4.2.5 DATA STORAGE AND EVALUATION

4.2.5.1 Data Storage

The DASY5 software stores the acquired data from the data acquisition electronics as raw data (in microvolt readings from the probe sensors), together with all necessary software parameters for the data evaluation (probe calibration data, liquid parameters and device frequency and modulation data) in measurement files with the extension “.DAE4”. The software evaluates the desired unit and format for output each time the data is visualized or exported. This allows verification of the complete software setup even after the measurement and allows correction of incorrect parameter settings. For example, if a measurement has been performed with a wrong crest factor parameter in the device setup, the parameter can be corrected afterwards and the data can be re-evaluated.

The measured data can be visualized or exported in different units or formats, depending on the selected probe type ([V/m], [A/m], [°C], [mW/g], [mW/cm²], [dBrel], etc.). Some of these units are not available in certain situations or show meaningless results, e.g., a SAR output in a lossless media will always be zero. Raw data can also be exported to perform the evaluation with other software packages.

4.4.2 Data Evaluation by SEMCAD

The SEMCAD software automatically executes the following procedures to calculate the field units from the microvolt readings at the probe connector. The parameters used in the evaluation are stored in the configuration modules of the software:

Probe parameters:	Sensitivity	Normi, a ₁₀ , a ₁₁ , a ₁₂
	Conversion factor	ConvF _i
	Diode compression point	Dcp _i
Device parameters:	Frequency	f
	Crest factor	cf
Media parameters:	Conductivity	
	Density	

These parameters must be set correctly in the software. They can be found in the component documents or they can be imported into the software from the configuration files issued for the DASYS components. In the direct measuring mode of the multimeter option, the parameters of the actual system setup are used. In the scan visualization and export modes, the parameters stored in the corresponding document files are used.

The first step of the evaluation is a linearization of the filtered input signal to account for the compression characteristics of the detector diode. The compensation depends on the input signal, the diode type and the DC-transmission factor from the diode to the evaluation electronics.

If the exciting field is pulsed, the crest factor of the signal must be known to correctly compensate for peak power. The formula for each channel can be given as:

$$V_i = U_i + U_i^2 \cdot cf / dcp_i$$

With	V _i = compensated signal of channel i	(i = x, y, z)
	U _i = input signal of channel i	(i = x, y, z)
	cf = crest factor of exciting field	(DASY parameter)
	dcp _i = diode compression point	(DASY parameter)

From the compensated input signals the primary field data for each channel can be evaluated:

$$\text{E-field probes: } E_i = (V_i / \text{Norm}_i \cdot \text{ConvF})^{1/2}$$

$$\text{H-field probes: } H_i = (V_i)^{1/2} \cdot (a_{i0} + a_{i1} f + a_{i2} f^2) / f$$

With V_i = compensated signal of channel i (i = x, y, z)

Norm_i = sensor sensitivity of channel i (i = x, y, z)
[mV/(V/m)²] for E-field Probes

ConvF = sensitivity enhancement in solution

a_{ij} = sensor sensitivity factors for H-field probes

f = carrier frequency [GHz]

E_i = electric field strength of channel i in V/m

H_i = magnetic field strength of channel i in A/m

The RSS value of the field components gives the total field strength (Hermitian magnitude):

$$E_{\text{tot}} = (E_x^2 + E_y^2 + E_z^2)^{1/2}$$

The primary field data are used to calculate the derived field units.

$$\text{SAR} = (E_{\text{tot}})^2 \cdot \sigma / (\rho \cdot 1000)$$

With SAR = local specific absorption rate in mW/g

E_{tot} = total field strength in V/m
= conductivity in [mho/m] or [Siemens/m]
= equivalent tissue density in g/cm³

Note that the density is normally set to 1 (or 1.06), to account for actual brain density rather than the density of the simulation liquid. The power flow density is calculated assuming the excitation field to be a free space field.

$$P_{\text{pwe}} = E_{\text{tot}}^2 / 3770 \text{ or } P_{\text{pwe}} = H_{\text{tot}}^2 \cdot 37.7$$

With P_{pwe} = equivalent power density of a plane wave in mW/cm²

E_{tot} = total field strength in V/m

H_{tot} = total magnetic field strength in A/m

5. TISSUE-EQUIVALENT LIQUID

5.1 TISSUE-EQUIVALENT LIQUID INGREDIENTS

The liquid is consisted of water, salt and Glycol. The liquid has previously been proven to be suited for worst-case. The Table 2 shows the detail solution. It's satisfying the latest tissue dielectric parameters requirements proposed

Composition of the body Tissue Equivalent Matter

MIXTURE%	FREQUENCY 2450MHz
Water	73.2
Glycol	26.7
Salt	0.1
Dielectric Parameters Target Value	f=2450MHz $\epsilon=52.70$ $\sigma=1.95$

5.2 TISSUE-EQUIVALENT LIQUID PROPERTIES

Dielectric Performance of Tissue Simulating Liquid

Frequency (MHz)	Description	Dielectric Parameters		Temp °C
		ϵ_r	σ (s/m)	
2450	Target value $\pm 5\%$ within	52.70 50.07-55.34	1.95 1.85-2.048	22.0
	Measurement value 2014-07-21	51.41	2.01	21.8

6. SYSTEM CHECK

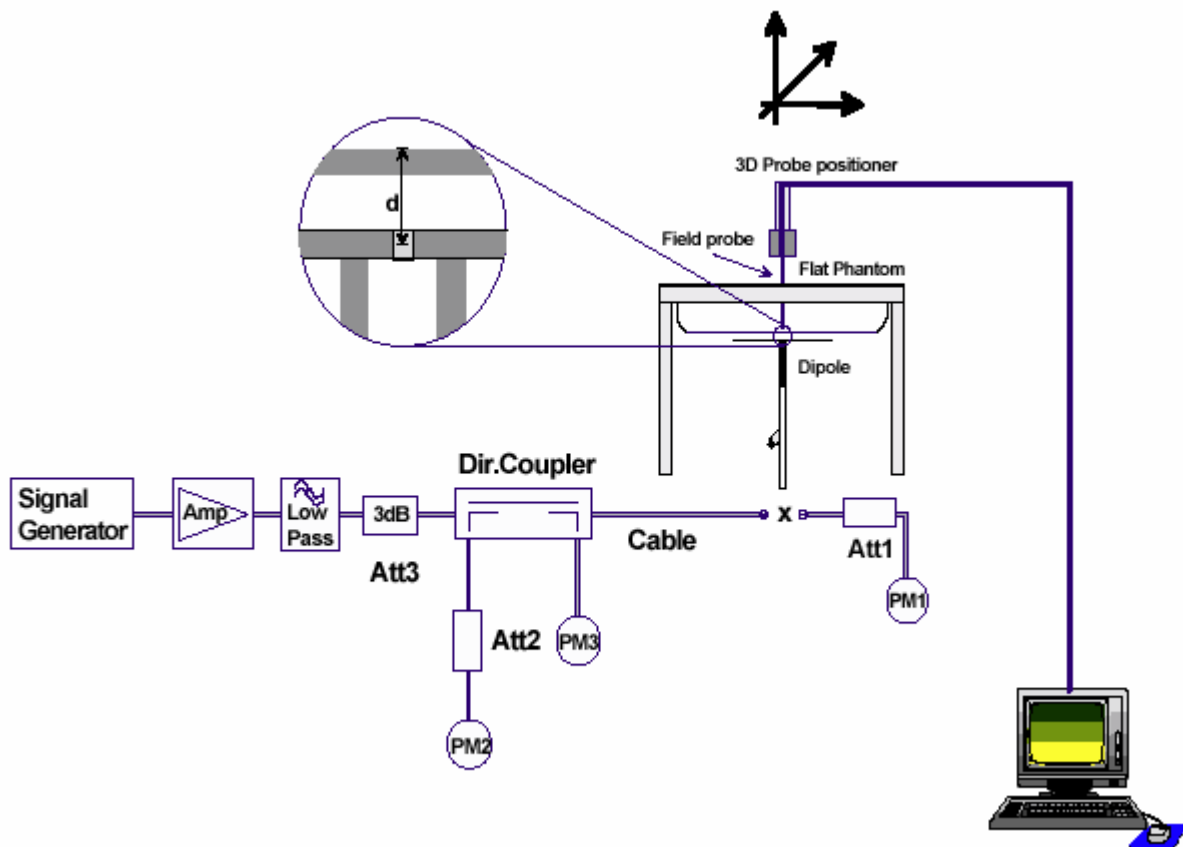
6.1 DESCRIPTION OF SYSTEM CHECK

The manufacturer calibrates the probes annually. Dielectric parameters of the tissue simulants were measured every day using the dielectric probe kit and the network analyzer. A system check measurement was made following the determination of the dielectric parameters of the simulant, using the dipole validation kit. A power level of 250 mW was supplied to the dipole antenna, which was placed under the flat section of the twin SAM phantom. The system check results (dielectric parameters and SAR values) are given in the 6.2.

System check results have to be equal or near the values determined during dipole calibration with the relevant liquids and test system ($\pm 10\%$).

System check is performed regularly on all frequency bands where tests are performed with the DASY5 system.

System Check Set-up



6.2 DESCRIPTION OF SYSTEM CHECK

System Check in Tissue Simulating Liquid

Frequency (MHz)	Test Date	Dielectric Parameters		Temp	250mW Measured SAR _{1g}	1W Normalized SAR _{1g}	1W Target SAR _{1g} (±10% deviation)
		ϵ_r	σ (s/m)	(°C)	(W/kg)		
2450	2014-07-21	51.41	2.01	21.80	12.8	51.20	49.30 (44.37~54.23)

Note: 1. The graph results see Appendix 2.
2. Target Value derives from the calibration certificate

7. OPERATIONAL CONDITIONS DURING TEST

7.1 General Description of Test Procedures

For WLAN SAR testing, WLAN engineering testing software installed on the DUT can provide continuous transmitting RF signal. This RF signal utilized in SAR measurement has almost 100% duty cycle and its crest factor is 1.

For the 802.11b/g/n SAR tests, a communication link is set up with the test mode software for WIFI mode test. During the test, at the each test frequency channel, the EUT is operated at the RF continuous emission mode. Each channel should be tested at the lowest data rate. Testing at higher data rates is not required when the maximum average output power is less than 0.25dB higher than those measured at the lowest data rate.

802.11b/g/n operating modes are tested independently according to the service requirements in each frequency band. 802.11b/g/n modes are tested on the maximum average output channel.

SAR is not required for 802.11g/n channels when the maximum average output power is less than 0.25dB higher than that measured on the corresponding 802.11b channels.

7.2 Test Position

7.2.1 Test Position Requirements

The SAR Exclusion Threshold in KDB 447498 D01 can be applied to determine SAR test exclusion for adjacent edge configurations. The closest distance from the antenna to an adjacent edge is used to determine if SAR testing is required for the adjacent edges, with the adjacent edge positioned adjacent the phantom and the edge containing the antenna positioned perpendicular to the phantom.

7.2.2 SAR test reduction and exclusion guidance

(1) The SAR exclusion threshold for distances < 50mm is defined by the following equation:

$$\frac{(\text{max. power of channel, including tune-up tolerance, mW})}{(\text{min. test separation distance, mm})} \sqrt{\text{Frequency (GHz)}} \leq 3.0$$

(2) The SAR exclusion threshold for distances > 50mm is defined by the following equation, as illustrated in KDB 447498 D01 Appendix B:

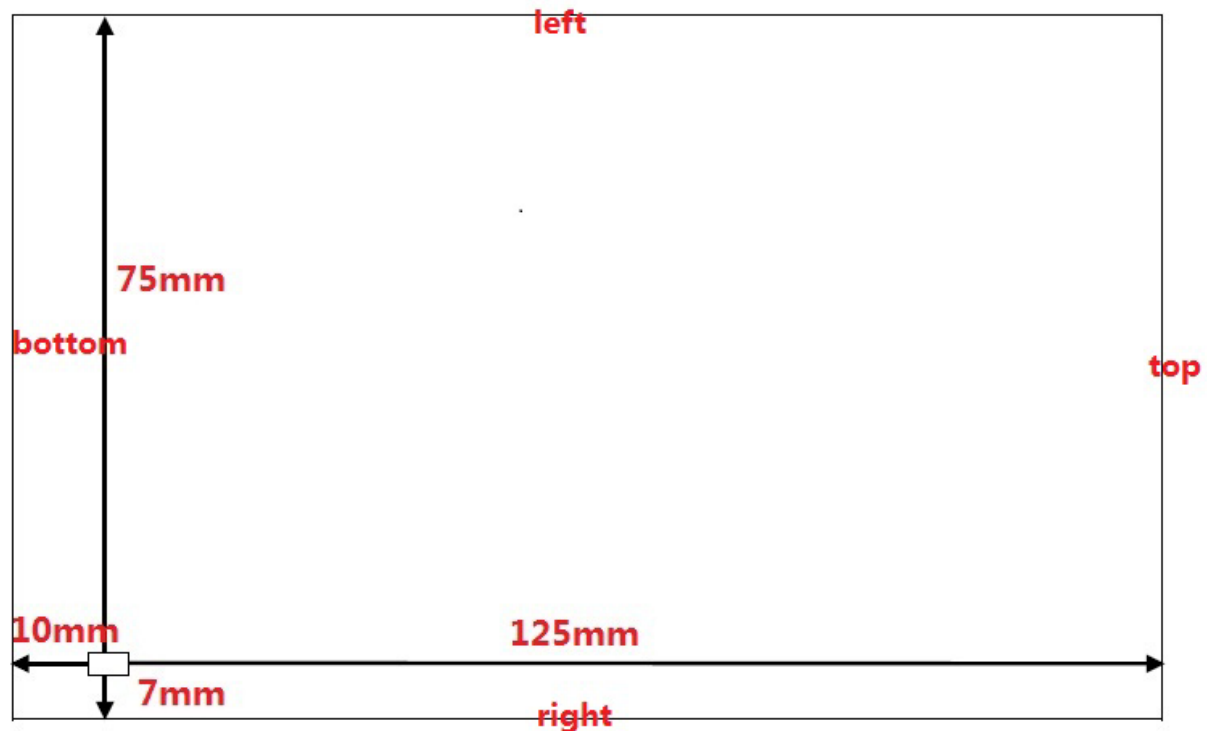
a) at 100 MHz to 1500 MHz

$$[\text{Power allowed at numeric Threshold at 50 mm in step 1}] + (\text{test separation distance} - 50 \text{ mm}) \cdot (f_{\text{(MHz)}}/150) \text{ mW}$$

b) at > 1500 MHz and ≤ 6 GHz

$$[\text{Power allowed at numeric Threshold at 50 mm in step 1}] + (\text{test separation distance} - 50 \text{ mm}) \cdot 10 \text{ mW}$$

The location of the antenna inside EUT is shown in APPENDIX 7.



Test Position 1: The front side of the EUT towards the bottom of the flat phantom distance 0mm.
(APPENDIX 7 Picture 1)

SAR is required for WiFi antenna in this position.

$$\text{Evaluation}_{\text{WiFi}} = [10^{(16.5/10)}/18] * (2.462^{1/2}) = 3.89 > 3.0$$

Test Position 2: The back side of the EUT towards the bottom of the flat phantom distance 0mm.
(APPENDIX 7 Picture 2)

SAR is required for WiFi antenna in this position.

$$\text{Evaluation}_{\text{WiFi}} = [10^{(16.5/10)}/8] * (2.462^{1/2}) = 8.76 > 3.0$$

Test Position 3: The right side of the EUT towards the bottom of the flat phantom distance 0mm.
(APPENDIX 7 Picture 3)

SAR is required for WiFi antenna in this position.

$$\text{Evaluation}_{\text{WiFi}} = [10^{(16.5/10)}/7] * (2.462^{1/2}) = 10.01 > 3.0$$

Test Position 4: The left side of the EUT towards the bottom of the flat phantom distance 0mm.

SAR is not required for WiFi antenna in this position.

$$\text{Evaluation}_{(\text{WiFi})} = 95.60 + (75 - 50) * 10 = 345.60 \text{ Mw} = 25.39 \text{ dBm} > 16.5 \text{ dBm (max. power)}$$

Test Position 5: The bottom side of the EUT towards the bottom of the flat phantom distance 0mm.
(APPENDIX 7 Picture 4)

SAR is required for WiFi antenna in this position.

$$\text{Evaluation}_{(\text{WiFi})} = [10^{(16.5/10)} / 10] * (2.462^{1/2}) = 7.01 > 3.0$$

Test Position 6: The top side of the EUT towards the bottom of the flat phantom distance 0mm.

SAR is not required for WiFi antenna in this position.

$$\text{Evaluation}_{(\text{WiFi})} = 95.60 + (125 - 50) * 10 = 845.60 \text{ Mw} = 29.27 \text{ dBm} > 16.5 \text{ dBm (max. power)}$$

8. TEST RESULT

8.1 CONDUCTED POWER RESULTS

Test Mode	Data Rate (Mbps)	Test Results (dBm)		
		Conducted AV		
		2412MHz	2437MHz	2462MHz
802.11b	1	15.98	15.73	15.27
	2	15.84	15.68	15.21
	5.5	15.77	15.59	15.18
	11	15.69	15.53	15.15

Test Mode	Data Rate (Mbps)	Test Results (dBm)		
		Conducted AV		
		2412MHz	2437MHz	2462MHz
802.11g	6	13.55	13.52	13.54
	9	13.51	13.44	13.46
	12	13.48	13.42	13.39
	18	13.42	13.38	13.36
	24	13.35	13.32	13.34
	36	13.27	13.26	13.27
	48	13.22	13.21	13.23
	54	13.16	13.12	13.14

Test Mode	Data Rate (Mbps)	Test Results (dBm)		
		Conducted AV		
		2412MHz	2437MHz	2462MHz
802.11n HT20	MCS0	13.54	13.37	13.67
	MCS1	13.51	13.31	13.63
	MCS2	13.47	13.26	13.61
	MCS3	13.42	13.24	13.58
	MCS4	13.39	13.17	13.55
	MCS5	13.35	13.15	13.51
	MCS6	13.28	13.12	13.49
	MCS7	13.25	13.05	13.44

Test Mode	Data Rate (Mbps)	Test Results (dBm)		
		Conducted AV		
		2422MHz	2437MHz	2452MHz
802.11n HT40	MCS0	13.63	13.53	13.47
	MCS1	13.58	13.47	13.41
	MCS2	13.55	13.42	13.39
	MCS3	13.52	13.38	13.35
	MCS4	13.49	13.34	13.31
	MCS5	13.44	13.31	13.26
	MCS6	13.41	13.27	13.21
	MCS7	13.37	13.24	13.16

8.2 SAR TEST RESULTS

Test Position	Channel Frequency (MHz)	Duty Cycle	Maximum Allowed Power (dBm)	Conducted power (dBm)	Drift ±0.21dB	Limit of SAR 1.6 W/kg			
					Drift (dB)	Measured SAR (W/kg)	Scaling factor	Reported SAR (W/kg)	Graph Results
Test Position of Body with HD1(HGST HTS5450A7E380), 802.11b (Distance=0mm)									
1	2412	1:1	16.5	15.98	-0.01	0.041	1.127	0.04622	1
Test Position of Body with HD2(HGST HTS5410A9E680), 802.11b (Distance=0mm)									
1	2412	1:1	16.5	15.98	0.07	0.043	1.127	0.04847	2
Test Position of Body with HD3(Seagate ST500LT012), 802.11b (Distance=0mm)									
1	2412	1:1	16.5	15.98	0.06	0.047	1.127	0.05298	3
2	2412	1:1	16.5	15.98	0.02	0.228	1.127	0.25700	4
3	2412	1:1	16.5	15.98	0.02	0.174	1.127	0.19613	5
5	2412	1:1	16.5	15.98	0.04	0.091	1.127	0.10257	6

Note: 1. The value with boldface is the maximum SAR Value of each test band.

2. Per FCC KDB Publication 447498 D01, if the reported (scaled) SAR measured at the middle channel or highest output power channel for each test configuration is ≤ 0.8 W/kg then testing at the other channels is not required for such test configuration(s).

3. KDB 248227-SAR is not required for 802.11g/n channels when the maximum average output power is less than 1/4dB higher than measured on the corresponding 802.11b channels.

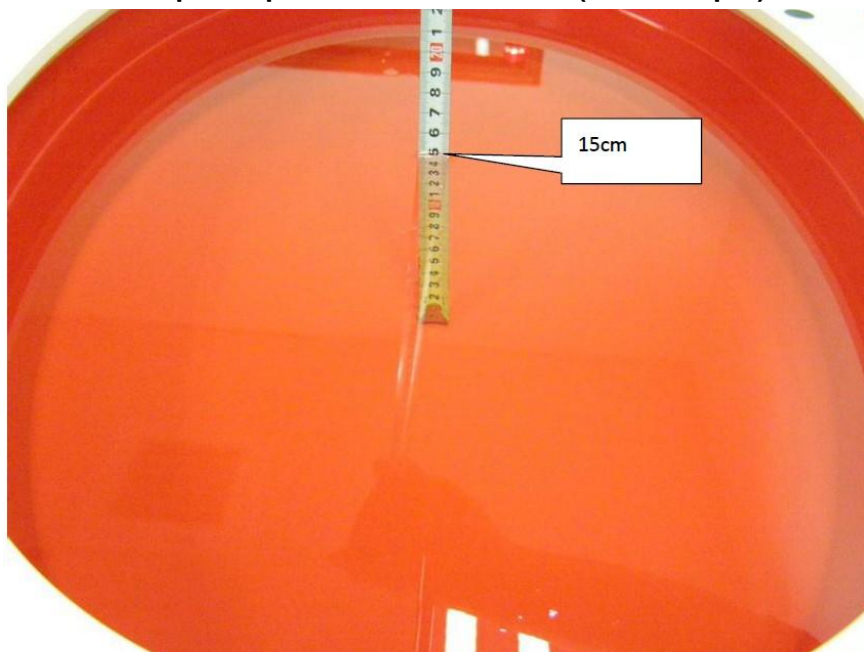
APPENDIX

1. Test Layout

Specific Absorption Rate Test Layout



Liquid depth in the flat Phantom ($\geq 15\text{cm}$ depth)



2. System Check Results

Date/Time: 07/21/2014 10:43:19

Test Laboratory: BTL Inc.

System Performance Check D2450 MHz

DUT: Dipole 2450 MHz D2450V2; Type: D2450V2; Serial: D2450V2 - SN:919

Communication System: UID 0, CW (0); Frequency: 2450 MHz

Medium parameters used: $f = 2450$ MHz; $\sigma = 2.01$ S/m; $\epsilon_r = 51.41$; $\rho = 1000$ kg/m³

Phantom section: Flat Section

Measurement Standard: DASY5 (IEEE/IEC/ANSI C63.19-2007)

DASY Configuration:

- Probe: EX3DV4 - SN3932; ConvF(7.4, 7.4, 7.4); Calibrated: 09/16/2013;
- Sensor-Surface: 2mm (Mechanical Surface Detection), $z = 1.0, 31.0$
- Electronics: DAE4 Sn1390; Calibrated: 09/10/2013
- Phantom: ELI v5.0; Type: QDOVA002AA; Serial: TP:1222
- DASY52 52.8.7(1137); SEMCAD X 14.6.10(7164)

System Performance Check at 2450MHz/d=10mm, Pin=250 mW, dist=2.0mm (EX-Probe)/Area Scan

(5x7x1): Measurement grid: $dx=10$ mm, $dy=10$ mm

Maximum value of SAR (measured) = 20.01 W/kg

System Performance Check at 2450MHz/d=10mm, Pin=250 mW, dist=2.0mm (EX-Probe)/Zoom Scan

(7x7x7) (7x7x7)/Cube 0: Measurement

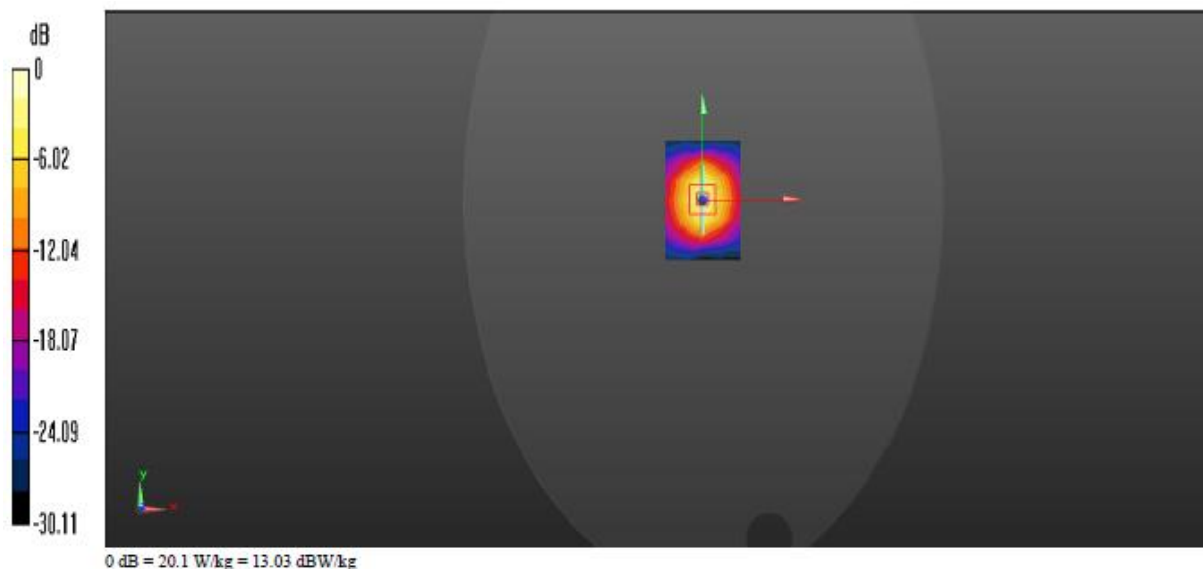
grid: $dx=5$ mm, $dy=5$ mm, $dz=5$ mm

Reference Value = 103.4 V/m; Power Drift = -0.03 dB

Peak SAR (extrapolated) = 26.21 W/kg

SAR(1 g) = 12.8 W/kg; SAR(10 g) = 6.33 W/kg

Maximum value of SAR (measured) = 20.1 W/kg



3. Graph Results

Date/Time: 07/21/2014 12:30:22

Test Laboratory: BTL Inc.

WiFi HDD P600 802.11b(HGST HTS5450A7E380) 2412MHz CH1 Test Position 1

DUT: WiFi HDD; Type: P600; Serial: NA

Communication System: UID 0, IEEE 802.11b WiFi 2.4GHz (DSSS,1Mbps) (0); Frequency: 2412 MHz

Medium parameters used (interpolated): $f = 2412$ MHz; $\sigma = 1.972$ S/m; $\epsilon_r = 52.39$; $\rho = 1000$ kg/m³

Phantom section: Flat Section

Measurement Standard: DASY5 (IEEE/IEC/ANSI C63.19-2007)

DASY Configuration:

- Probe: EX3DV4 - SN3932; ConvF(7.34, 7.34, 7.34); Calibrated: 09/16/2013;
- Sensor-Surface: 2mm (Mechanical Surface Detection), $z = 1.0, 31.0$
- Electronics: DAE4 Sn1390; Calibrated: 09/10/2013
- Phantom: ELI v5.0; Type: QDOVA002AA; Serial: TP:1222
- DASY52 52.8.7(1137); SEMCAD X 14.6.10(7164)

Test Position 1/WiFi HDD P600(HGST HTS5450A7E380) 802.11b CH1/Area Scan (13x17x1):

Measurement grid: $dx=10$ mm, $dy=10$ mm

Maximum value of SAR (measured) = 0.0538 W/kg

Test Position 1/WiFi HDD P600(HGST HTS5450A7E380) 802.11b CH1/Zoom Scan (7x7x7)

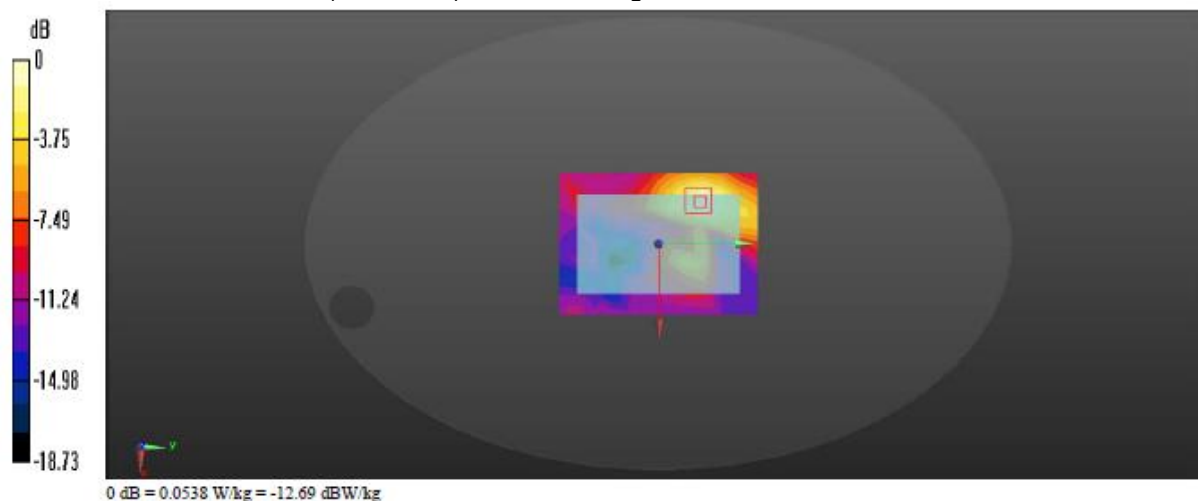
(7x7x7)/Cube 0: Measurement grid: $dx=5$ mm, $dy=5$ mm, $dz=5$ mm

Reference Value = 1.86 V/m; Power Drift = 0.01 dB

Peak SAR (extrapolated) = 0.0931 W/kg

SAR(1 g) = 0.041 W/kg; SAR(10 g) = 0.017 W/kg

Maximum value of SAR (measured) = 0.0676 W/kg



Date/Time: 07/21/2014 13:42:28

Test Laboratory: BTL Inc.**WiFi HDD P600(HGST HTS5410A9E680) 802.11b 2412MHz CH1 Test Position 1****DUT: WiFi HDD; Type: P600; Serial: NA**

Communication System: UID 0, IEEE 802.11b WiFi 2.4GHz (DSSS,1Mbps) (0); Frequency: 2412 MHz

Medium parameters used (interpolated): $f = 2412$ MHz; $\sigma = 1.972$ S/m; $\epsilon_r = 52.39$; $\rho = 1000$ kg/m³

Phantom section: Flat Section

Measurement Standard: DASYS5 (IEEE/IEC/ANSI C63.19-2007)

DASY Configuration:

- Probe: EX3DV4 - SN3932; ConvF(7.34, 7.34, 7.34); Calibrated: 09/16/2013;
- Sensor-Surface: 2mm (Mechanical Surface Detection), $z = 1.0, 31.0$
- Electronics: DAE4 Sn1390; Calibrated: 09/10/2013
- Phantom: ELI v5.0; Type: QDOVA002AA; Serial: TP:1222
- DASYS5 52.8.7(1137); SEMCAD X 14.6.10(7164)

Test Position 1/WiFi HDD P600(HGST HTS5410A9E680) 802.11b CH1/Area Scan (13x17x1):Measurement grid: $dx=10$ mm, $dy=10$ mm

Maximum value of SAR (measured) = 0.0601 W/kg

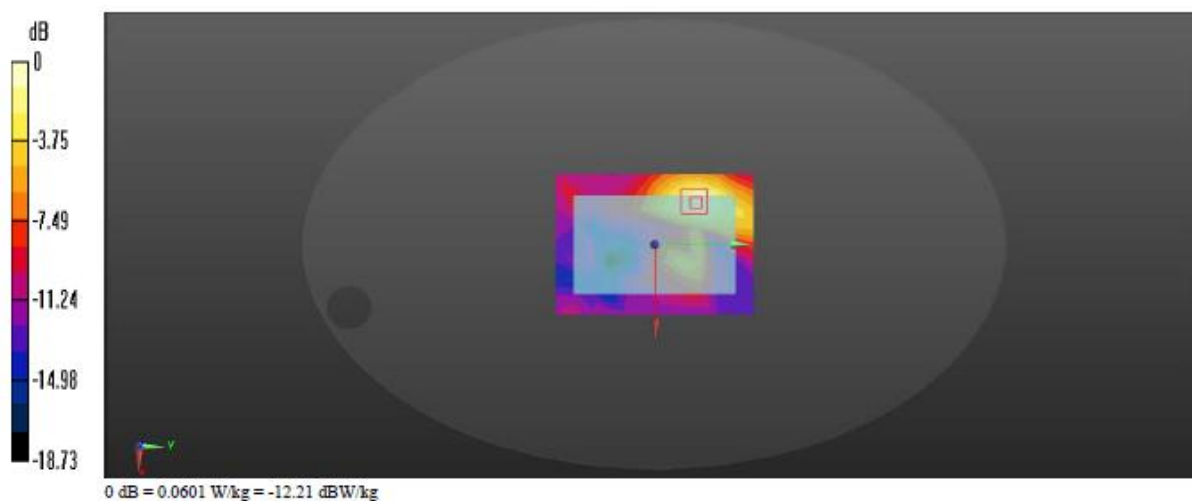
Test Position 1/WiFi HDD P600(HGST HTS5410A9E680) 802.11b CH1/Zoom Scan (7x7x7)**(7x7x7)/Cube 0:** Measurement grid: $dx=5$ mm, $dy=5$ mm, $dz=5$ mm

Reference Value = 1.775V/m; Power Drift = 0.07 dB

Peak SAR (extrapolated) = 0.0860 W/kg

SAR(1 g) = 0.043 W/kg; SAR(10 g) = 0.022 W/kg

Maximum value of SAR (measured) = 0.0702 W/kg



Date/Time: 07/21/2014 14:20:25

Test Laboratory: BTL Inc.**WiFi HDD P600(Seagate ST500LT012) 802.11b 2412MHz CH1 Test Position 1****DUT: WiFi HDD; Type: P600; Serial: NA**

Communication System: UID 0, IEEE 802.11b WiFi 2.4GHz (DSSS,1Mbps) (0); Frequency: 2412 MHz

Medium parameters used (interpolated): $f = 2412$ MHz; $\sigma = 1.972$ S/m; $\epsilon_r = 52.39$; $\rho = 1000$ kg/m³

Phantom section: Flat Section

Measurement Standard: DASYS5 (IEEE/IEC/ANSI C63.19-2007)

DASY Configuration:

- Probe: EX3DV4 - SN3932; ConvF(7.34, 7.34, 7.34); Calibrated: 09/16/2013;
- Sensor-Surface: 2mm (Mechanical Surface Detection), $z = 1.0, 31.0$
- Electronics: DAE4 Sn1390; Calibrated: 09/10/2013
- Phantom: ELI v5.0; Type: QDOVA002AA; Serial: TP:1222
- DASYS5 52.8.7(1137); SEMCAD X 14.6.10(7164)

Test Position 1/WiFi HDD P600(Seagate ST500LT012) 802.11b CH1/Area Scan (13x17x1):Measurement grid: $dx=10$ mm, $dy=10$ mm

Maximum value of SAR (measured) = 0.0546 W/kg

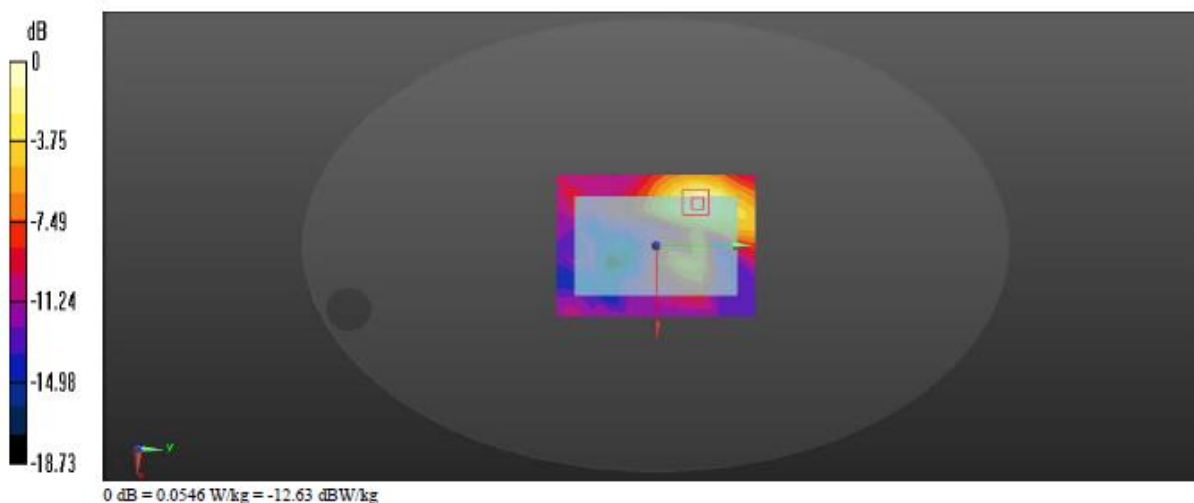
Test Position 1/WiFi HDD P600(Seagate ST500LT012) 802.11b CH1/Zoom Scan (7x7x7)**(7x7x7)/Cube 0:** Measurement grid: $dx=5$ mm, $dy=5$ mm, $dz=5$ mm

Reference Value = 1.874 V/m; Power Drift = 0.06 dB

Peak SAR (extrapolated) = 0.0960 W/kg

SAR(1 g) = 0.047 W/kg; SAR(10 g) = 0.025 W/kg

Maximum value of SAR (measured) = 0.0681 W/kg



Date/Time: 07/21/2014 15:08:06

Test Laboratory: BTL Inc.**WiFi HDD P600(Seagate ST500LT012) 802.11b 2412MHz CH1 Test Position 2****DUT: WiFi HDD; Type: P600; Serial: NA**

Communication System: UID 0, IEEE 802.11b WiFi 2.4GHz (DSSS,1Mbps) (0); Frequency: 2412 MHz

Medium parameters used (interpolated): $f = 2412$ MHz; $\sigma = 1.972$ S/m; $\epsilon_r = 52.39$; $\rho = 1000$ kg/m³

Phantom section: Flat Section

Measurement Standard: DASYS5 (IEEE/IEC/ANSI C63.19-2007)

DASY Configuration:

- Probe: EX3DV4 - SN3932; ConvF(7.34, 7.34, 7.34); Calibrated: 09/16/2013;
- Sensor-Surface: 2mm (Mechanical Surface Detection), $z = 1.0, 31.0$
- Electronics: DAE4 Sn1390; Calibrated: 09/10/2013
- Phantom: ELI v5.0; Type: QDOVA002AA; Serial: TP:xxxx
- DASYS5 52.8.7(1137); SEMCAD X 14.6.10(7164)

Test Position 2/WiFi HDD P600(Seagate ST500LT012) 802.11b CH1/Area Scan (13x17x1):Measurement grid: $dx=10$ mm, $dy=10$ mm

Maximum value of SAR (measured) = 0.243 W/kg

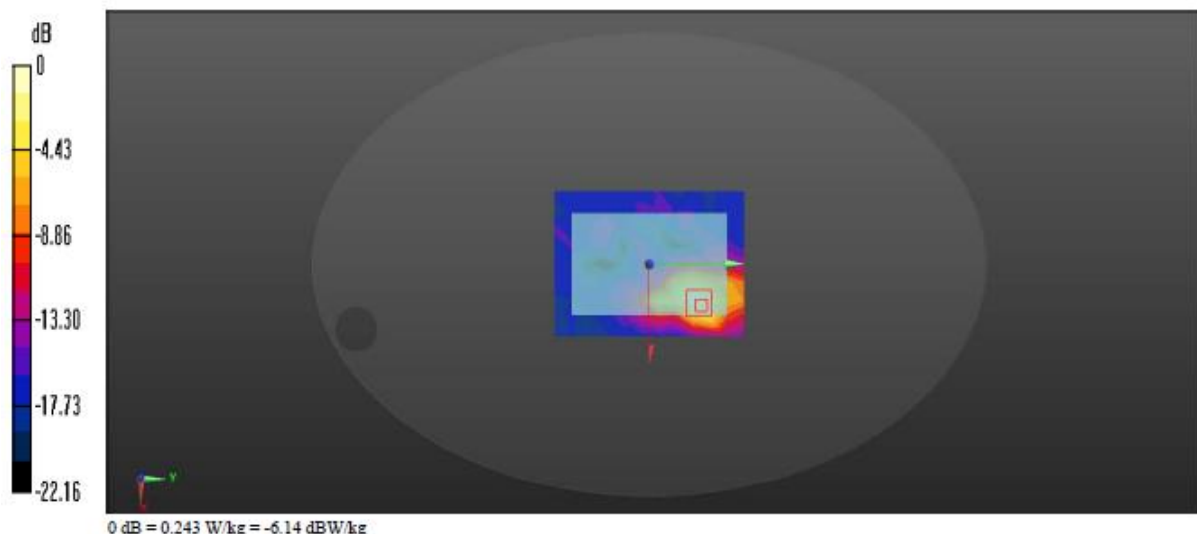
Test Position 2/WiFi HDD P600(Seagate ST500LT012) 802.11b CH1/Zoom Scan (7x7x7)**(7x7x7)/Cube 0:** Measurement grid: $dx=5$ mm, $dy=5$ mm, $dz=5$ mm

Reference Value = 1.543 V/m; Power Drift = 0.02 dB

Peak SAR (extrapolated) = 0.544 W/kg

SAR(1 g) = 0.228 W/kg; SAR(10 g) = 0.097 W/kg

Maximum value of SAR (measured) = 0.375 W/kg



Date/Time: 07/21/2014 16:43:57

Test Laboratory: BTL Inc.**WiFi HDD P600(Seagate ST500LT012) 802.11b 2412MHz CH1 Test Position 3****DUT: WiFi HDD; Type: P600; Serial: NA**

Communication System: UID 0, IEEE 802.11b WiFi 2.4GHz (DSSS,1Mbps) (0); Frequency: 2412 MHz

Medium parameters used (interpolated): $f = 2412$ MHz; $\sigma = 1.972$ S/m; $\epsilon_r = 52.39$; $\rho = 1000$ kg/m³

Phantom section: Flat Section

Measurement Standard: DASYS5 (IEEE/IEC/ANSI C63.19-2007)

DASY Configuration:

- Probe: EX3DV4 - SN3932; ConvF(7.34, 7.34, 7.34); Calibrated: 09/16/2013;
- Sensor-Surface: 2mm (Mechanical Surface Detection), $z = 1.0, 31.0$
- Electronics: DAE4 Sn1390; Calibrated: 09/10/2013
- Phantom: ELI v5.0; Type: QDOVA002AA; Serial: TP:1222
- DASYS5 52.8.7(1137); SEMCAD X 14.6.10(7164)

Test Position 3/WiFi HDD P600(Seagate ST500LT012) 802.11b CH1/Area Scan (7x17x1):Measurement grid: $dx=10$ mm, $dy=10$ mm

Maximum value of SAR (measured) = 0.182 W/kg

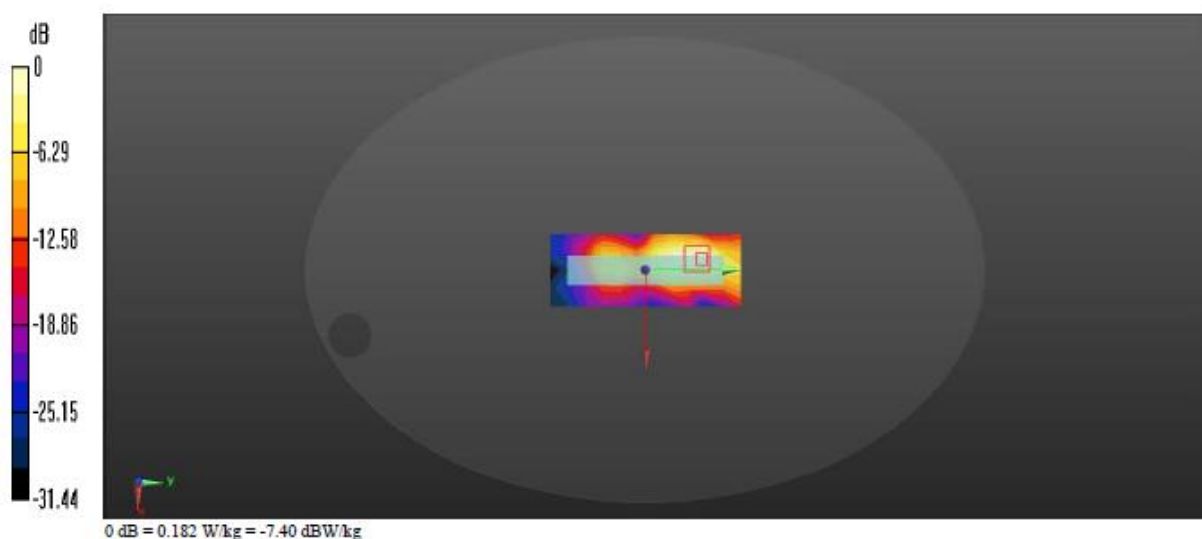
Test Position 3/WiFi HDD P600(Seagate ST500LT012) 802.11b CH1/Zoom Scan (7x7x7)**(7x7x7)/Cube 0:** Measurement grid: $dx=5$ mm, $dy=5$ mm, $dz=5$ mm

Reference Value = 3.781 V/m; Power Drift = 0.02 dB

Peak SAR (extrapolated) = 0.412 W/kg

SAR(1 g) = 0.174 W/kg; SAR(10 g) = 0.074 W/kg

Maximum value of SAR (measured) = 0.265 W/kg



Date/Time: 07/21/2014 20:09:34

Test Laboratory: BTL Inc.**WiFi HDD P600(Seagate ST500LT012) 802.11b 2412MHz CH1 Test Position 5****DUT: WiFi HDD; Type: P600; Serial: NA**

Communication System: UID 0, IEEE 802.11b WiFi 2.4GHz (DSSS,1Mbps) (0); Frequency: 2412 MHz

Medium parameters used (interpolated): $f = 2412$ MHz; $\sigma = 1.972$ S/m; $\epsilon_r = 52.39$; $\rho = 1000$ kg/m³

Phantom section: Flat Section

Measurement Standard: DASYS5 (IEEE/IEC/ANSI C63.19-2007)

DASY Configuration:

- Probe: EX3DV4 - SN3932; ConvF(7.34, 7.34, 7.34); Calibrated: 09/16/2013;
- Sensor-Surface: 2mm (Mechanical Surface Detection), $z = 1.0, 31.0$
- Electronics: DAE4 Sn1390; Calibrated: 09/10/2013
- Phantom: ELI v5.0; Type: QDOVA002AA; Serial: TP:1222
- DASYS5 52.8.7(1137); SEMCAD X 14.6.10(7164)

Test Position 5/WiFi HDD P600(Seagate ST500LT012) 802.11b CH1/Area Scan (7x17x1):Measurement grid: $dx=10$ mm, $dy=10$ mm

Maximum value of SAR (measured) = 0.0992 W/kg

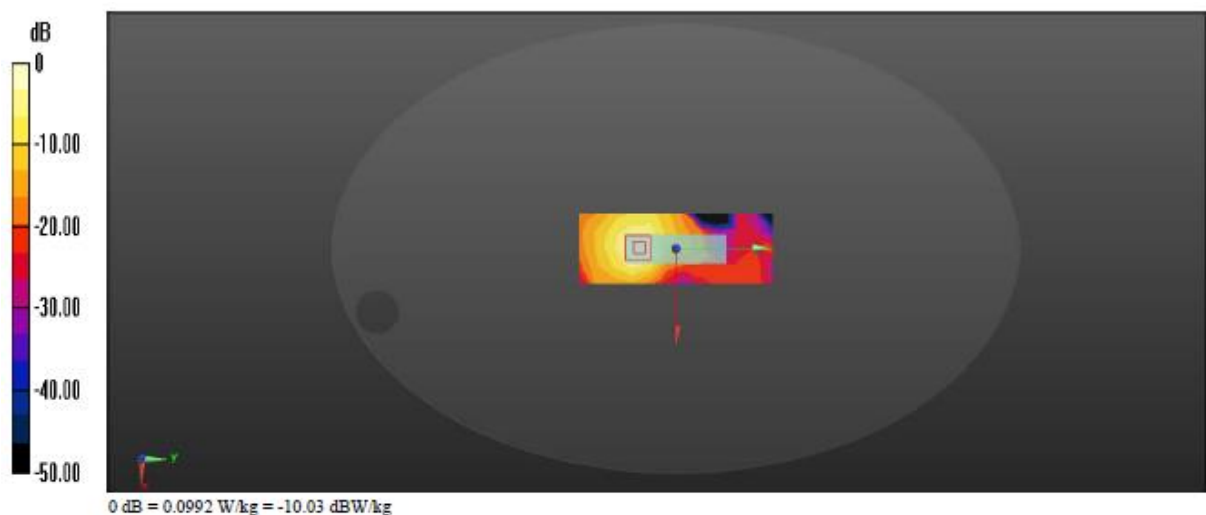
Test Position 5/WiFi HDD P600(Seagate ST500LT012) 802.11b CH1/Zoom Scan (7x7x7)**(7x7x7)/Cube 0:** Measurement grid: $dx=5$ mm, $dy=5$ mm, $dz=5$ mm

Reference Value = 1.266 V/m; Power Drift = 0.04 dB

Peak SAR (extrapolated) = 0.246 W/kg

SAR(1 g) = 0.091 W/kg; SAR(10 g) = 0.035 W/kg

Maximum value of SAR (measured) = 0.160 W/kg



4. Probe Calibration Certificate

EX3DV4

**Calibration Laboratory of
Schmid & Partner
Engineering AG**
Zeughausstrasse 43, 8004 Zurich, Switzerland



S Schweizerischer Kalibrierdienst
C Service suisse d'étalonnage
S Servizio svizzero di taratura
S Swiss Calibration Service

Accredited by the Swiss Accreditation Service (SAS)
The Swiss Accreditation Service is one of the signatories to the EA
Multilateral Agreement for the recognition of calibration certificates

Accreditation No.: **SCS 108**

Client **Neutron Engineering (Auden)**

Certificate No.: **EX3-3932_Sep13**

CALIBRATION CERTIFICATE

Object **EX3DV4 - SN:3932**

Calibration procedure(s) **QA CAL-01.v9, QA CAL-14.v4, QA CAL-23.v5, QA CAL-25.v6
Calibration procedure for dosimetric E-field probes**

Calibration date: **September 16, 2013**

This calibration certificate documents the traceability to national standards, which realize the physical units of measurements (SI).
The measurements and the uncertainties with confidence probability are given on the following pages and are part of the certificate.

All calibrations have been conducted in the closed laboratory facility: environment temperature (22 ± 3)°C and humidity < 70%.

Calibration Equipment used (M&TE critical for calibration)

Primary Standards	ID	Cal Date (Certificate No.)	Scheduled Calibration
Power meter E4419B	GB41293874	04-Apr-13 (No. 217-01733)	Apr-14
Power sensor E4412A	MY41498067	04-Apr-13 (No. 217-01733)	Apr-14
Reference 3 dB Attenuator	SN: S5054 (3c)	04-Apr-13 (No. 217-01737)	Apr-14
Reference 20 dB Attenuator	SN: S5277 (20x)	04-Apr-13 (No. 217-01735)	Apr-14
Reference 30 dB Attenuator	SN: S5129 (30b)	04-Apr-13 (No. 217-01738)	Apr-14
Reference Probe ES3DV2	SN: 3013	28-Dec-12 (No. ES3-3013_Dec12)	Dec-13
DAE4	SN: 660	4-Sep-13 (No. DAE4-660_Sep13)	Apr-14
Secondary Standards	ID	Check Date (in house)	Scheduled Check
RF generator HP 8648C	US3642U01700	4-Aug-99 (in house check Apr-13)	in house check: Apr-15
Network Analyzer HP 8753E	US37390585	18-Oct-01 (in house check Oct-12)	In house check: Oct-13

Calibrated by:	Name Leif Klysner	Function Laboratory Technician	Signature
Approved by:	Name Katja Pokovic	Function Technical Manager	Signature

Issued: September 17, 2013

This calibration certificate shall not be reproduced except in full without written approval of the laboratory.

Certificate No: EX3-3932_Sep13

Page 1 of 11

**Calibration Laboratory of
Schmid & Partner
Engineering AG**
Zeughausstrasse 43, 8004 Zurich, Switzerland



S Schweizerischer Kalibrierdienst
S Service suisse d'étalonnage
C Servizio svizzero di taratura
S Swiss Calibration Service

Accredited by the Swiss Accreditation Service (SAS)

Accreditation No.: **SCS 108**

The Swiss Accreditation Service is one of the signatories to the EA
Multilateral Agreement for the recognition of calibration certificates

Glossary:

TSL	tissue simulating liquid
NORM _{x,y,z}	sensitivity in free space
ConvF	sensitivity in TSL / NORM _{x,y,z}
DCP	diode compression point
CF	crest factor (1/duty_cycle) of the RF signal
A, B, C, D	modulation dependent linearization parameters
Polarization φ	φ rotation around probe axis
Polarization ϑ	ϑ rotation around an axis that is in the plane normal to probe axis (at measurement center), i.e., $\vartheta = 0$ is normal to probe axis

Calibration is Performed According to the Following Standards:

- a) IEEE Std 1528-2003, "IEEE Recommended Practice for Determining the Peak Spatial-Averaged Specific Absorption Rate (SAR) in the Human Head from Wireless Communications Devices: Measurement Techniques", December 2003
- b) IEC 62209-1, "Procedure to measure the Specific Absorption Rate (SAR) for hand-held devices used in close proximity to the ear (frequency range of 300 MHz to 3 GHz)", February 2005

Methods Applied and Interpretation of Parameters:

- **NORM_{x,y,z}**: Assessed for E-field polarization $\vartheta = 0$ ($f \leq 900$ MHz in TEM-cell; $f > 1800$ MHz: R22 waveguide). NORM_{x,y,z} are only intermediate values, i.e., the uncertainties of NORM_{x,y,z} does not affect the E^2 -field uncertainty inside TSL (see below ConvF).
- **NORM(f)_{x,y,z}** = NORM_{x,y,z} * frequency_response (see Frequency Response Chart). This linearization is implemented in DASY4 software versions later than 4.2. The uncertainty of the frequency response is included in the stated uncertainty of ConvF.
- **DCP_{x,y,z}**: DCP are numerical linearization parameters assessed based on the data of power sweep with CW signal (no uncertainty required). DCP does not depend on frequency nor media.
- **PAR**: PAR is the Peak to Average Ratio that is not calibrated but determined based on the signal characteristics
- **A_{x,y,z}; B_{x,y,z}; C_{x,y,z}; D_{x,y,z}; VR_{x,y,z}**: A, B, C, D are numerical linearization parameters assessed based on the data of power sweep for specific modulation signal. The parameters do not depend on frequency nor media. VR is the maximum calibration range expressed in RMS voltage across the diode.
- **ConvF and Boundary Effect Parameters**: Assessed in flat phantom using E-field (or Temperature Transfer Standard for $f \leq 800$ MHz) and inside waveguide using analytical field distributions based on power measurements for $f > 800$ MHz. The same setups are used for assessment of the parameters applied for boundary compensation (alpha, depth) of which typical uncertainty values are given. These parameters are used in DASY4 software to improve probe accuracy close to the boundary. The sensitivity in TSL corresponds to NORM_{x,y,z} * ConvF whereby the uncertainty corresponds to that given for ConvF. A frequency dependent ConvF is used in DASY version 4.4 and higher which allows extending the validity from ± 50 MHz to ± 100 MHz.
- **Spherical isotropy (3D deviation from isotropy)**: in a field of low gradients realized using a flat phantom exposed by a patch antenna.
- **Sensor Offset**: The sensor offset corresponds to the offset of virtual measurement center from the probe tip (on probe axis). No tolerance required.

EX3DV4 – SN:3932

September 16, 2013

Probe EX3DV4

SN:3932

Manufactured: July 24, 2013
Calibrated: September 16, 2013

Calibrated for DASY/EASY Systems
(Note: non-compatible with DASY2 system!)

Certificate No: EX3-3932_Sep13

Page 3 of 11

DASY/EASY - Parameters of Probe: EX3DV4 - SN:3932

Basic Calibration Parameters

	Sensor X	Sensor Y	Sensor Z	Unc (k=2)
Norm ($\mu\text{V}/(\text{V}/\text{m})^2$) ^A	0.52	0.55	0.46	$\pm 10.1 \%$
DCP (mV) ^B	102.3	102.8	101.8	

Modulation Calibration Parameters

UID	Communication System Name		A dB	B dB $\sqrt{\mu\text{V}}$	C	D dB	VR mV	Unc ^E (k=2)
0	CW	X	0.0	0.0	1.0	0.00	167.8	$\pm 3.0 \%$
		Y	0.0	0.0	1.0		179.9	
		Z	0.0	0.0	1.0		157.1	

The reported uncertainty of measurement is stated as the standard uncertainty of measurement multiplied by the coverage factor $k=2$, which for a normal distribution corresponds to a coverage probability of approximately 95%.

^A The uncertainties of NormX,Y,Z do not affect the E²-field uncertainty inside TSL (see Pages 5 and 6).

^B Numerical linearization parameter: uncertainty not required.

^E Uncertainty is determined using the max. deviation from linear response applying rectangular distribution and is expressed for the square of the field value.

DASY/EASY - Parameters of Probe: EX3DV4 - SN:3932

Calibration Parameter Determined in Head Tissue Simulating Media

f (MHz) ^C	Relative Permittivity ^F	Conductivity (S/m) ^F	ConvF X	ConvF Y	ConvF Z	Alpha	Depth (mm)	Unct. (k=2)
750	41.9	0.89	10.36	10.36	10.36	0.20	1.35	± 12.0 %
835	41.5	0.90	9.89	9.89	9.89	0.29	1.02	± 12.0 %
900	41.5	0.97	9.67	9.67	9.67	0.21	1.33	± 12.0 %
1750	40.1	1.37	8.47	8.47	8.47	0.33	0.89	± 12.0 %
1900	40.0	1.40	8.21	8.21	8.21	0.12	1.47	± 12.0 %
2100	39.8	1.49	8.31	8.31	8.31	0.80	0.50	± 12.0 %
2300	39.5	1.67	7.75	7.75	7.75	0.43	0.70	± 12.0 %
2450	39.2	1.80	7.40	7.40	7.40	0.36	0.81	± 12.0 %
2600	39.0	1.96	7.16	7.16	7.16	0.44	0.78	± 12.0 %

^C Frequency validity of ± 100 MHz only applies for DASY v4 4 and higher (see Page 2), else it is restricted to ± 50 MHz. The uncertainty is the RSS of the ConvF uncertainty at calibration frequency and the uncertainty for the indicated frequency band.

^F At frequencies below 3 GHz, the validity of tissue parameters (ϵ and σ) can be relaxed to ± 10% if liquid compensation formula is applied to measured SAR values. At frequencies above 3 GHz, the validity of tissue parameters (ϵ and σ) is restricted to ± 5%. The uncertainty is the RSS of the ConvF uncertainty for indicated target tissue parameters.

DASY/EASY - Parameters of Probe: EX3DV4 - SN:3932

Calibration Parameter Determined in Body Tissue Simulating Media

f (MHz) ^C	Relative Permittivity ^F	Conductivity (S/m) ^F	ConvF X	ConvF Y	ConvF Z	Alpha	Depth (mm)	Unct. (k=2)
750	55.5	0.96	9.92	9.92	9.92	0.21	1.47	± 12.0 %
835	55.2	0.97	9.92	9.92	9.92	0.30	1.12	± 12.0 %
900	55.0	1.05	9.67	9.67	9.67	0.51	0.79	± 12.0 %
1750	53.4	1.49	8.14	8.14	8.14	0.56	0.73	± 12.0 %
1900	53.3	1.52	7.80	7.80	7.80	0.42	0.80	± 12.0 %
2100	53.2	1.62	8.12	8.12	8.12	0.29	1.01	± 12.0 %
2300	52.9	1.81	7.57	7.57	7.57	0.59	0.68	± 12.0 %
2450	52.7	1.95	7.34	7.34	7.34	0.80	0.50	± 12.0 %
2600	52.5	2.16	7.08	7.08	7.08	0.80	0.50	± 12.0 %
5200	49.0	5.30	4.69	4.69	4.69	0.45	1.90	± 13.1 %
5300	48.9	5.42	4.48	4.48	4.48	0.45	1.90	± 13.1 %
5500	48.6	5.65	4.15	4.15	4.15	0.50	1.90	± 13.1 %
5600	48.5	5.77	4.07	4.07	4.07	0.45	1.90	± 13.1 %
5800	48.2	6.00	4.19	4.19	4.19	0.55	1.90	± 13.1 %

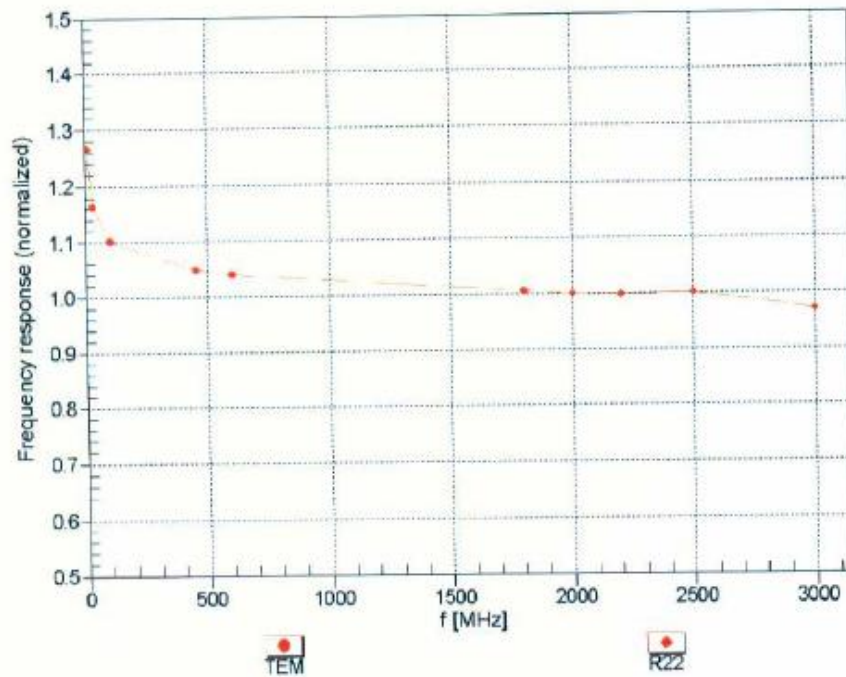
^C Frequency validity of ± 100 MHz only applies for DASY v4.4 and higher (see Page 2), else it is restricted to ± 50 MHz. The uncertainty is the RSS of the ConvF uncertainty at calibration frequency and the uncertainty for the indicated frequency band.

^F At frequencies below 3 GHz, the validity of tissue parameters (ϵ and σ) can be relaxed to ± 10% if liquid compensation formula is applied to measured SAR values. At frequencies above 3 GHz, the validity of tissue parameters (ϵ and σ) is restricted to ± 5%. The uncertainty is the RSS of the ConvF uncertainty for indicated target tissue parameters.

EX3DV4- SN:3932

September 16, 2013

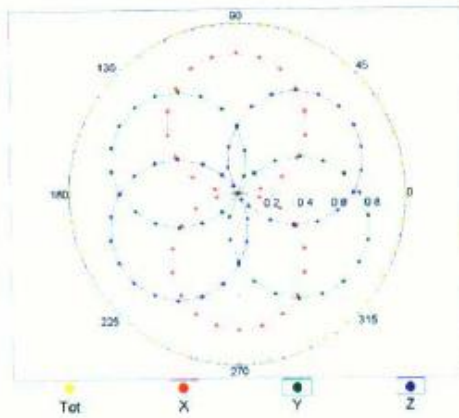
Frequency Response of E-Field (TEM-Cell:ifi110 EXX, Waveguide: R22)



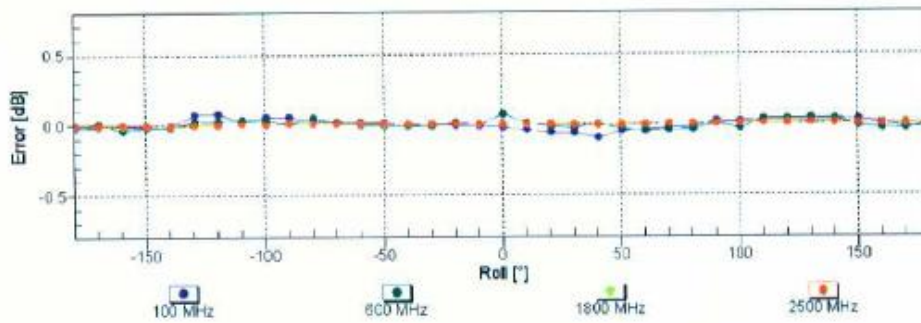
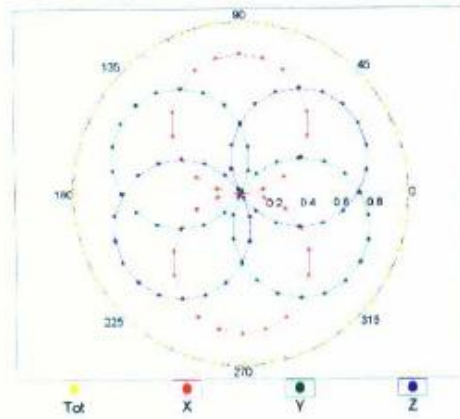
Uncertainty of Frequency Response of E-field: $\pm 6.3\%$ ($k=2$)

Receiving Pattern (ϕ), $\theta = 0^\circ$

f=600 MHz,TEM

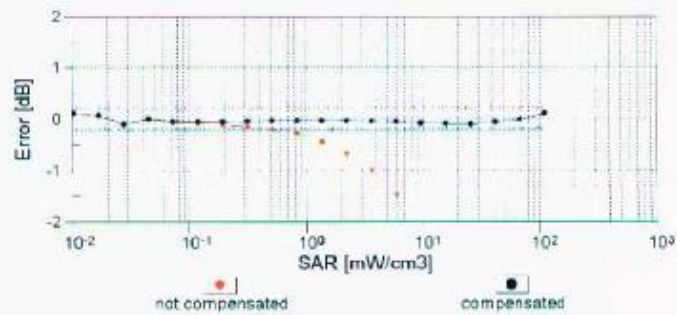
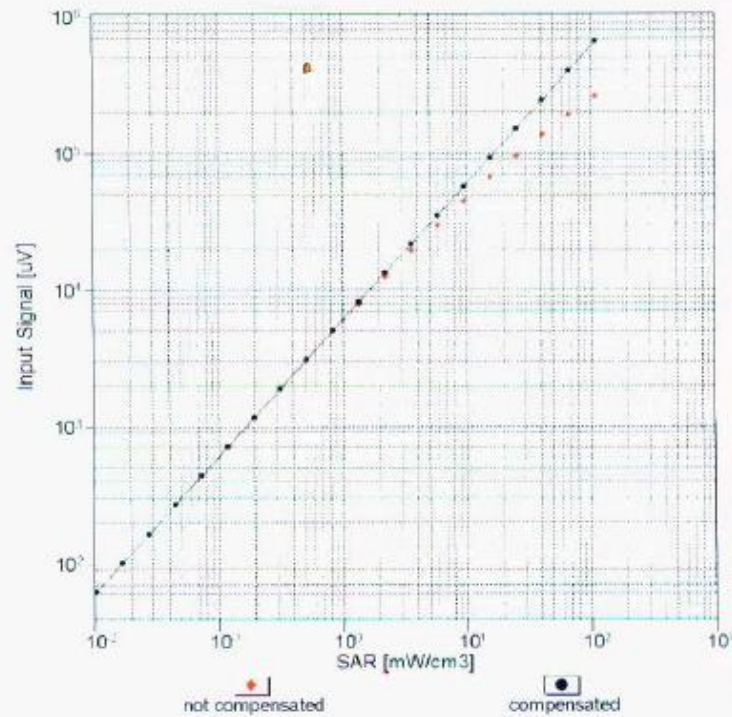


f=1800 MHz,R22



Uncertainty of Axial Isotropy Assessment: $\pm 0.5\%$ ($k=2$)

Dynamic Range $f(\text{SAR}_{\text{head}})$ (TEM cell , $f = 900 \text{ MHz}$)

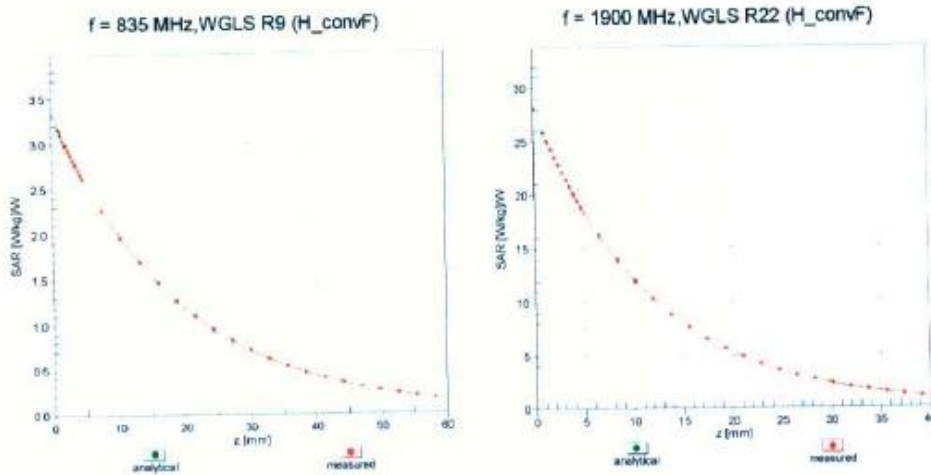


Uncertainty of Linearity Assessment: $\pm 0.6\%$ ($k=2$)

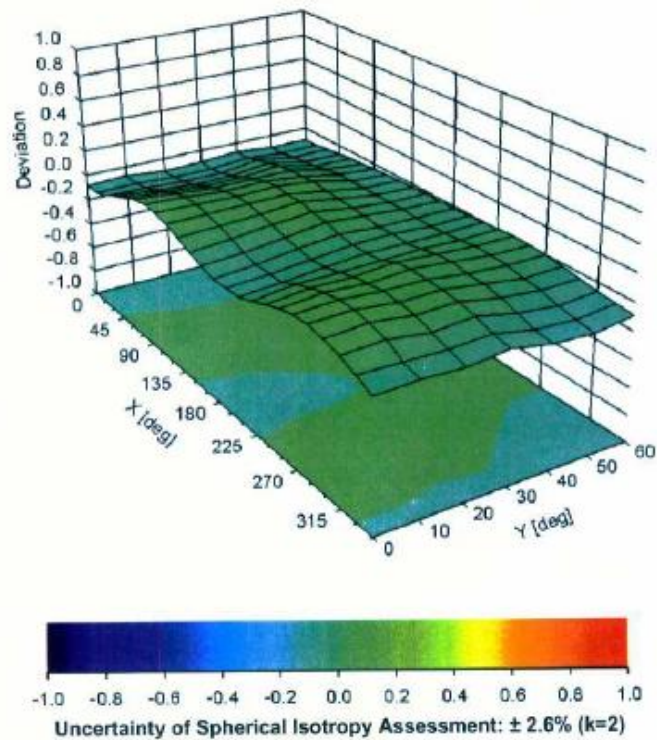
EX3DV4- SN:3932

September 16, 2013

Conversion Factor Assessment



Deviation from Isotropy in Liquid Error (ϕ, θ), $f = 900$ MHz



EX3DV4- SN:3932

September 16, 2013

DASY/EASY - Parameters of Probe: EX3DV4 - SN:3932**Other Probe Parameters**

Sensor Arrangement	Triangular
Connector Angle (°)	-109.5
Mechanical Surface Detection Mode	enabled
Optical Surface Detection Mode	disabled
Probe Overall Length	337 mm
Probe Body Diameter	10 mm
Tip Length	9 mm
Tip Diameter	2.5 mm
Probe Tip to Sensor X Calibration Point	1 mm
Probe Tip to Sensor Y Calibration Point	1 mm
Probe Tip to Sensor Z Calibration Point	1 mm
Recommended Measurement Distance from Surface	2 mm

5. (1) D2450V2 Dipole Calibration Certificate

**Calibration Laboratory of
Schmid & Partner
Engineering AG**
Zeughausstrasse 43, 8004 Zurich, Switzerland



S Schweizerischer Kalibrierdienst
C Service suisse d'étalonnage
S Servizio svizzero di taratura
S Swiss Calibration Service

Accredited by the Swiss Accreditation Service (SAS)
The Swiss Accreditation Service is one of the signatories to the EA
Multilateral Agreement for the recognition of calibration certificates

Accreditation No.: **SCS 108**

Client **Neutron Engineering (Auden)**

Certificate No: **D2450V2-919_Sep13**

CALIBRATION CERTIFICATE

Object **D2450V2 - SN: 919**

Calibration procedure(s) **QA CAL-05.v9
Calibration procedure for dipole validation kits above 700 MHz**

Calibration date: **September 10, 2013**

This calibration certificate documents the traceability to national standards, which realize the physical units of measurements (SI).
The measurements and the uncertainties with confidence probability are given on the following pages and are part of the certificate.

All calibrations have been conducted in the closed laboratory facility: environment temperature (22 ± 3)°C and humidity < 70%.

Calibration Equipment used (M&TE critical for calibration)

Primary Standards	ID #	Cal Date (Certificate No.)	Scheduled Calibration
Power meter EPM-442A	GB37480704	01-Nov-12 (No. 217-01640)	Oct-13
Power sensor HP 8481A	US37292783	01-Nov-12 (No. 217-01640)	Oct-13
Reference 20 dB Attenuator	SN: 5058 (20k)	04-Apr-13 (No. 217-01736)	Apr-14
Type-N mismatch combination	SN: 5047.3 / 06327	04-Apr-13 (No. 217-01739)	Apr-14
Reference Probe ES3DV3	SN: 3205	28-Dec-12 (No. ES3-3205_Dec12)	Dec-13
DAE4	SN: 601	25-Apr-13 (No. DAE4-601_Apr13)	Apr-14
Secondary Standards	ID #	Check Date (in house)	Scheduled Check
Power sensor HP 8481A	MY41092317	18-Oct-02 (in house check Oct-11)	In house check: Oct-13
RF generator R&S SMT-06	100005	04-Aug-99 (in house check Oct-11)	In house check: Oct-13
Network Analyzer HP 8753E	US37390585 S4206	18-Oct-01 (in house check Oct-12)	In house check: Oct-13

Calibrated by:	Name Israe El-Naouq	Function Laboratory Technician	Signature
Approved by:	Name Katja Pokovic	Function Technical Manager	

Issued: September 10, 2013

This calibration certificate shall not be reproduced except in full without written approval of the laboratory.

**Calibration Laboratory of
Schmid & Partner
Engineering AG**
Zeughausstrasse 43, 8004 Zurich, Switzerland



S Schweizerischer Kalibrierdienst
C Service suisse d'étalonnage
S Servizio svizzero di taratura
S Swiss Calibration Service

Accredited by the Swiss Accreditation Service (SAS)
The Swiss Accreditation Service is one of the signatories to the EA
Multilateral Agreement for the recognition of calibration certificates

Accreditation No.: **SCS 108**

Glossary:

TSL	tissue simulating liquid
ConvF	sensitivity in TSL / NORM x,y,z
N/A	not applicable or not measured

Calibration is Performed According to the Following Standards:

- a) IEEE Std 1528-2003, "IEEE Recommended Practice for Determining the Peak Spatial-Averaged Specific Absorption Rate (SAR) in the Human Head from Wireless Communications Devices: Measurement Techniques", December 2003
- b) IEC 62209-1, "Procedure to measure the Specific Absorption Rate (SAR) for hand-held devices used in close proximity to the ear (frequency range of 300 MHz to 3 GHz)", February 2005
- c) KDB 865664, "SAR Measurement Requirements for 100 MHz to 6 GHz"

Additional Documentation:

- d) DASY4/5 System Handbook

Methods Applied and Interpretation of Parameters:

- *Measurement Conditions:* Further details are available from the Validation Report at the end of the certificate. All figures stated in the certificate are valid at the frequency indicated.
- *Antenna Parameters with TSL:* The dipole is mounted with the spacer to position its feed point exactly below the center marking of the flat phantom section, with the arms oriented parallel to the body axis.
- *Feed Point Impedance and Return Loss:* These parameters are measured with the dipole positioned under the liquid filled phantom. The impedance stated is transformed from the measurement at the SMA connector to the feed point. The Return Loss ensures low reflected power. No uncertainty required.
- *Electrical Delay:* One-way delay between the SMA connector and the antenna feed point. No uncertainty required.
- *SAR measured:* SAR measured at the stated antenna input power.
- *SAR normalized:* SAR as measured, normalized to an input power of 1 W at the antenna connector.
- *SAR for nominal TSL parameters:* The measured TSL parameters are used to calculate the nominal SAR result.

The reported uncertainty of measurement is stated as the standard uncertainty of measurement multiplied by the coverage factor $k=2$, which for a normal distribution corresponds to a coverage probability of approximately 95%.

Measurement Conditions

DASY system configuration, as far as not given on page 1.

DASY Version	DASY5	V52.8.7
Extrapolation	Advanced Extrapolation	
Phantom	Modular Flat Phantom	
Distance Dipole Center - TSL	10 mm	with Spacer
Zoom Scan Resolution	dx, dy, dz = 5 mm	
Frequency	2450 MHz ± 1 MHz	

Head TSL parameters

The following parameters and calculations were applied.

	Temperature	Permittivity	Conductivity
Nominal Head TSL parameters	22.0 °C	39.2	1.80 mho/m
Measured Head TSL parameters	(22.0 ± 0.2) °C	39.4 ± 6 %	1.83 mho/m ± 6 %
Head TSL temperature change during test	< 0.5 °C	----	----

SAR result with Head TSL

SAR averaged over 1 cm ³ (1 g) of Head TSL	Condition	
SAR measured	250 mW input power	13.0 W/kg
SAR for nominal Head TSL parameters	normalized to 1W	51.6 W/kg ± 17.0 % (k=2)

SAR averaged over 10 cm ³ (10 g) of Head TSL	condition	
SAR measured	250 mW input power	6.04 W/kg
SAR for nominal Head TSL parameters	normalized to 1W	24.1 W/kg ± 16.5 % (k=2)

Body TSL parameters

The following parameters and calculations were applied.

	Temperature	Permittivity	Conductivity
Nominal Body TSL parameters	22.0 °C	52.7	1.95 mho/m
Measured Body TSL parameters	(22.0 ± 0.2) °C	52.2 ± 6 %	2.00 mho/m ± 6 %
Body TSL temperature change during test	< 0.5 °C	----	----

SAR result with Body TSL

SAR averaged over 1 cm ³ (1 g) of Body TSL	Condition	
SAR measured	250 mW input power	12.5 W/kg
SAR for nominal Body TSL parameters	normalized to 1W	49.3 W/kg ± 17.0 % (k=2)

SAR averaged over 10 cm ³ (10 g) of Body TSL	condition	
SAR measured	250 mW input power	5.83 W/kg
SAR for nominal Body TSL parameters	normalized to 1W	23.1 W/kg ± 16.5 % (k=2)

Appendix

Antenna Parameters with Head TSL

Impedance, transformed to feed point	55.6 Ω + 1.2 j Ω
Return Loss	- 25.3 dB

Antenna Parameters with Body TSL

Impedance, transformed to feed point	52.5 Ω + 2.8 j Ω
Return Loss	- 28.6 dB

General Antenna Parameters and Design

Electrical Delay (one direction)	1,159 ns
----------------------------------	----------

After long term use with 100W radiated power, only a slight warming of the dipole near the feedpoint can be measured.

The dipole is made of standard semirigid coaxial cable. The center conductor of the feeding line is directly connected to the second arm of the dipole. The antenna is therefore short-circuited for DC-signals. On some of the dipoles, small end caps are added to the dipole arms in order to improve matching when loaded according to the position as explained in the "Measurement Conditions" paragraph. The SAR data are not affected by this change. The overall dipole length is still according to the Standard.

No excessive force must be applied to the dipole arms, because they might bend or the soldered connections near the feedpoint may be damaged.

Additional EUT Data

Manufactured by	SPEAG
Manufactured on	December 19, 2012

DASY5 Validation Report for Head TSL

Date: 10.09.2013

Test Laboratory: SPEAG, Zurich, Switzerland

DUT: Dipole 2450 MHz; Type: D2450V2; Serial: D2450V2 - SN: 919

Communication System: UID 0 - CW; Frequency: 2450 MHz

Medium parameters used: $f = 2450$ MHz; $\sigma = 1.83$ S/m; $\epsilon_r = 39.4$; $\rho = 1000$ kg/m³

Phantom section: Flat Section

Measurement Standard: DASY5 (IEEE/IEC/ANSI C63.19-2007)

DASY52 Configuration:

- Probe: ES3DV3 - SN3205; ConvF(4.52, 4.52, 4.52); Calibrated: 28.12.2012;
- Sensor-Surface: 3mm (Mechanical Surface Detection)
- Electronics: DAE4 Sn601; Calibrated: 25.04.2013
- Phantom: Flat Phantom 5.0 (front); Type: QD000P50AA; Serial: 1001
- DASY52 52.8.7(1137); SEMCAD X 14.6.10(7164)

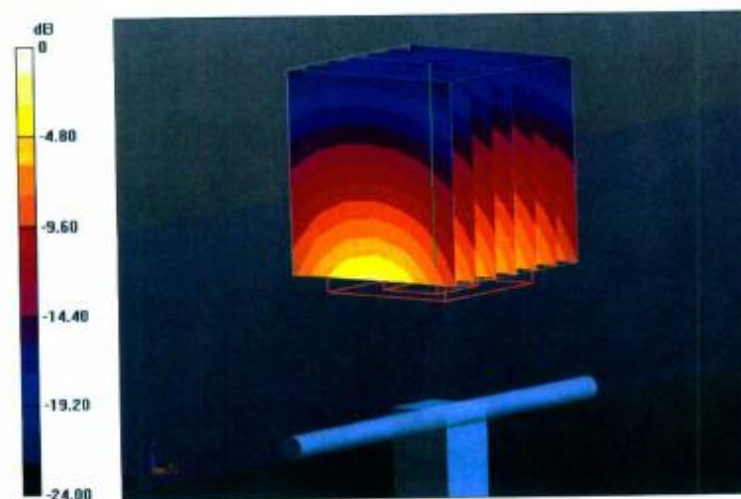
Dipole Calibration for Head Tissue/Pin=250 mW, d=10mm/Zoom Scan (7x7x7)/Cube 0:Measurement grid: $dx=5$ mm, $dy=5$ mm, $dz=5$ mm

Reference Value = 93.422 V/m; Power Drift = 0.02 dB

Peak SAR (extrapolated) = 26.9 W/kg

SAR(1 g) = 13 W/kg; SAR(10 g) = 6.04 W/kg

Maximum value of SAR (measured) = 17.1 W/kg

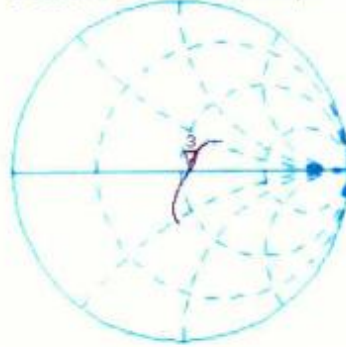


0 dB = 17.1 W/kg = 12.33 dBW/kg

Impedance Measurement Plot for Head TSL

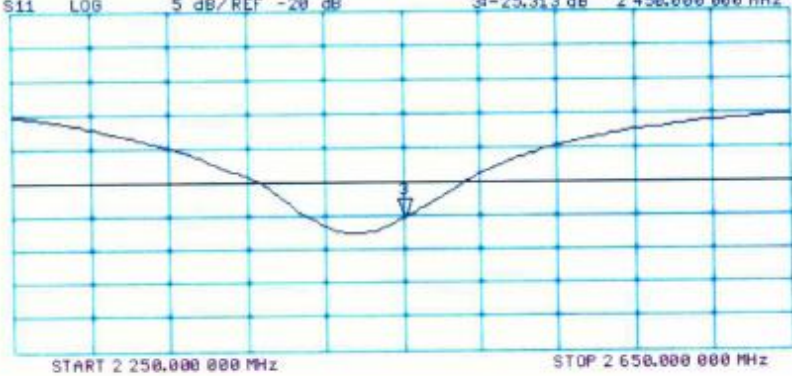
10 Sep 2013 09:02:07
CH1 S11 1 U FS \Re 55.594 Ω 1.2324 Ω 80.060 μ H 2 450.000 000 MHz

*
De1
Ca
Avg
16
H1d



CH2 S11 LOG 5 dB/REF -20 dB \Re -25.313 dB 2 450.000 000 MHz

Ca
Avg
16
H1d



DASY5 Validation Report for Body TSL

Date: 10.09.2013

Test Laboratory: SPEAG, Zurich, Switzerland

DUT: Dipole 2450 MHz; Type: D2450V2; Serial: D2450V2 - SN: 919

Communication System: UID 0 - CW; Frequency: 2450 MHz

Medium parameters used: $f = 2450$ MHz; $\sigma = 2$ S/m; $\epsilon_r = 52.2$; $\rho = 1000$ kg/m³

Phantom section: Flat Section

Measurement Standard: DASY5 (IEEE/IEC/ANSI C63.19-2007)

DASY52 Configuration:

- Probe: ES3DV3 - SN3205; ConvF(4.42, 4.42, 4.42); Calibrated: 28.12.2012;
- Sensor-Surface: 3mm (Mechanical Surface Detection)
- Electronics: DAE4 Sn601; Calibrated: 25.04.2013
- Phantom: Flat Phantom 5.0 (back); Type: QD000P50AA; Serial: 1002
- DASY52 52.8.7(1137); SEMCAD X 14.6.10(7164)

Dipole Calibration for Body Tissue/Pin=250 mW, d=10mm/Zoom Scan (7x7x7)/Cube 0:

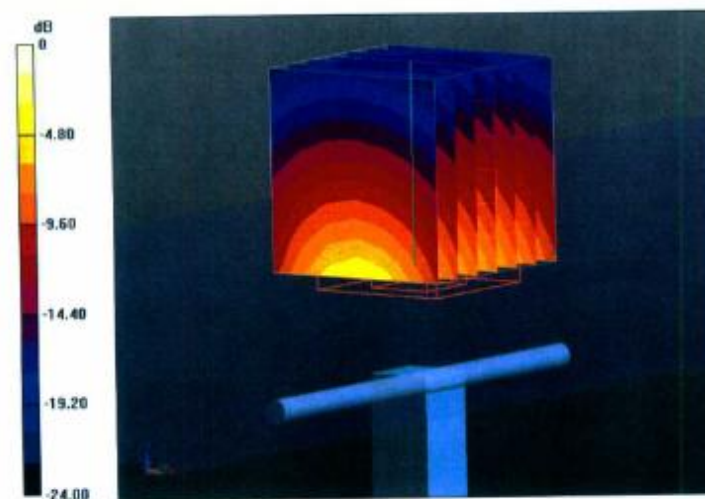
Measurement grid: dx=5mm, dy=5mm, dz=5mm

Reference Value = 93.422 V/m; Power Drift = 0.02 dB

Peak SAR (extrapolated) = 25.8 W/kg

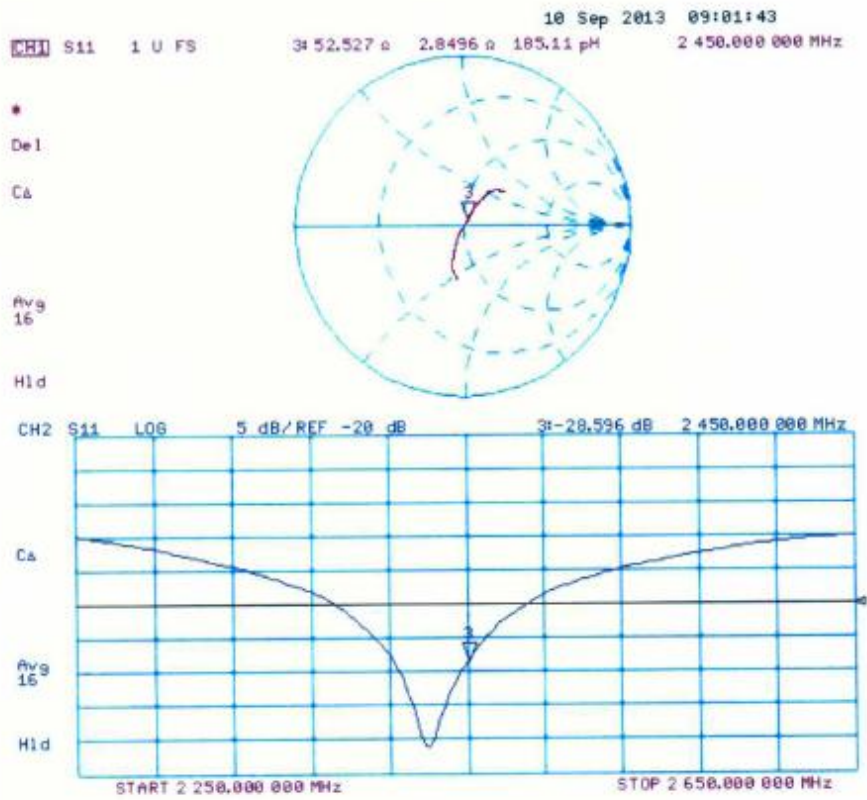
SAR(1 g) = 12.5 W/kg; SAR(10 g) = 5.83 W/kg

Maximum value of SAR (measured) = 16.5 W/kg



0 dB = 16.5 W/kg = 12.17 dBW/kg

Impedance Measurement Plot for Body TSL



6. DAE4 Calibration Certificate

**Calibration Laboratory of
Schmid & Partner
Engineering AG**
Zeughausstrasse 43, 8004 Zurich, Switzerland



S Schweizerischer Kalibrierdienst
C Service suisse d'étalonnage
S Servizio svizzero di taratura
S Swiss Calibration Service

Accredited by the Swiss Accreditation Service (SAS)
The Swiss Accreditation Service is one of the signatories to the EA
Multilateral Agreement for the recognition of calibration certificates

Accreditation No.: **SCS 108**

Client **Neutron Engineering (Auden)**

Certificate No: **DAE4-1390_Sep13**

CALIBRATION CERTIFICATE

Object **DAE4 - SD 000 D04 BM - SN: 1390**

Calibration procedure(s) **QA CAL-06.v26
Calibration procedure for the data acquisition electronics (DAE)**

Calibration date: **September 10, 2013**

This calibration certificate documents the traceability to national standards, which realize the physical units of measurements (SI).
The measurements and the uncertainties with confidence probability are given on the following pages and are part of the certificate.

All calibrations have been conducted in the closed laboratory facility: environment temperature (22 ± 3)°C and humidity < 70%.

Calibration Equipment used (M&TE critical for calibration)

Primary Standards	ID #	Cal Date (Certificate No.)	Scheduled Calibration
Keithley Multimeter Type 2001	SN: 0810278	02-Oct-12 (No:12728)	Oct-13
Secondary Standards	ID #	Check Date (in house)	Scheduled Check
Auto DAE Calibration Unit	SE UWS 053 AA 1001	07-Jan-13 (in house check)	In house check: Jan-14
Calibrator Box V2.1	SE UMS 006 AA 1002	07-Jan-13 (in house check)	In house check: Jan-14

Calibrated by:	Name R.Mayoraz	Function Technician	Signature
Approved by:	Name Fin Bomholt	Function Deputy Technical Manager	Signature

Issued: September 10, 2013

This calibration certificate shall not be reproduced except in full without written approval of the laboratory.

**Calibration Laboratory of
Schmid & Partner
Engineering AG**
Zeughausstrasse 43, 8004 Zurich, Switzerland



S Schweizerischer Kalibrierdienst
S Service suisse d'étalonnage
C Servizio svizzero di taratura
S Swiss Calibration Service

Accredited by the Swiss Accreditation Service (SAS)
The Swiss Accreditation Service is one of the signatories to the EA
Multilateral Agreement for the recognition of calibration certificates

Accreditation No.: **SCS 108**

Glossary

DAE data acquisition electronics
Connector angle information used in DASY system to align probe sensor X to the robot coordinate system.

Methods Applied and Interpretation of Parameters

- *DC Voltage Measurement*: Calibration Factor assessed for use in DASY system by comparison with a calibrated instrument traceable to national standards. The figure given corresponds to the full scale range of the voltmeter in the respective range.
- *Connector angle*: The angle of the connector is assessed measuring the angle mechanically by a tool inserted. Uncertainty is not required.
- The following parameters as documented in the Appendix contain technical information as a result from the performance test and require no uncertainty.
 - *DC Voltage Measurement Linearity*: Verification of the Linearity at +10% and -10% of the nominal calibration voltage. Influence of offset voltage is included in this measurement.
 - *Common mode sensitivity*: Influence of a positive or negative common mode voltage on the differential measurement.
 - *Channel separation*: Influence of a voltage on the neighbor channels not subject to an input voltage.
 - *AD Converter Values with inputs shorted*: Values on the internal AD converter corresponding to zero input voltage
 - *Input Offset Measurement*: Output voltage and statistical results over a large number of zero voltage measurements.
 - *Input Offset Current*: Typical value for information; Maximum channel input offset current, not considering the input resistance.
 - *Input resistance*: Typical value for information: DAE input resistance at the connector, during internal auto-zeroing and during measurement.
 - *Low Battery Alarm Voltage*: Typical value for information. Below this voltage, a battery alarm signal is generated.
 - *Power consumption*: Typical value for information. Supply currents in various operating modes.

DC Voltage Measurement

A/D - Converter Resolution nominal

High Range: 1LSB = 6.1 μ V, full range = -100...+300 mV

Low Range: 1LSB = 61nV, full range = -1.....+3mV

DASY measurement parameters: Auto Zero Time: 3 sec; Measuring time: 3 sec

Calibration Factors	X	Y	Z
High Range	403.648 \pm 0.02% (k=2)	403.367 \pm 0.02% (k=2)	404.248 \pm 0.02% (k=2)
Low Range	3.96280 \pm 1.50% (k=2)	3.98266 \pm 1.50% (k=2)	3.98218 \pm 1.50% (k=2)

Connector Angle

Connector Angle to be used in DASY system	70.5 $^{\circ}$ \pm 1 $^{\circ}$
---	------------------------------------

Appendix

1. DC Voltage Linearity

High Range	Reading (μV)	Difference (μV)	Error (%)
Channel X + Input	199997.35	0.91	0.00
Channel X + Input	20001.49	1.47	0.01
Channel X - Input	-20001.51	0.14	-0.00
Channel Y + Input	199996.87	0.53	0.00
Channel Y + Input	19998.65	-1.35	-0.01
Channel Y - Input	-20003.75	-2.14	0.01
Channel Z + Input	199996.57	0.03	0.00
Channel Z + Input	19998.48	-1.49	-0.01
Channel Z - Input	-20002.14	-0.43	0.00

Low Range	Reading (μV)	Difference (μV)	Error (%)
Channel X + Input	2000.37	0.14	0.01
Channel X + Input	200.69	0.09	0.04
Channel X - Input	-198.98	0.26	-0.13
Channel Y + Input	2000.03	-0.21	-0.01
Channel Y + Input	199.35	-1.26	-0.63
Channel Y - Input	-200.62	-1.31	0.66
Channel Z + Input	2000.23	0.08	0.00
Channel Z + Input	199.71	-0.80	-0.40
Channel Z - Input	-200.19	-0.80	0.40

2. Common mode sensitivity

DASY measurement parameters: Auto Zero Time: 3 sec; Measuring time: 3 sec

	Common mode Input Voltage (mV)	High Range Average Reading (μV)	Low Range Average Reading (μV)
Channel X	200	-3.16	-5.14
	-200	6.37	4.63
Channel Y	200	15.87	15.47
	-200	-18.18	-18.66
Channel Z	200	13.55	13.42
	-200	-15.48	-15.78

3. Channel separation

DASY measurement parameters: Auto Zero Time: 3 sec; Measuring time: 3 sec

	Input Voltage (mV)	Channel X (μV)	Channel Y (μV)	Channel Z (μV)
Channel X	200	-	1.53	-4.47
Channel Y	200	9.07	-	4.25
Channel Z	200	9.52	5.92	-

4. AD-Converter Values with inputs shorted

DASY measurement parameters: Auto Zero Time: 3 sec; Measuring time: 3 sec

	High Range (LSB)	Low Range (LSB)
Channel X	16203	14917
Channel Y	15819	16055
Channel Z	15731	15876

5. Input Offset Measurement

DASY measurement parameters: Auto Zero Time: 3 sec; Measuring time: 3 sec

Input 10M Ω

	Average (μ V)	min. Offset (μ V)	max. Offset (μ V)	Std. Deviation (μ V)
Channel X	-0.77	-1.57	0.21	0.34
Channel Y	-2.08	-2.71	-0.92	0.38
Channel Z	-1.18	-2.78	0.33	0.46

6. Input Offset Current

Nominal Input circuitry offset current on all channels: <25fA

7. Input Resistance (Typical values for information)

	Zeroing (kOhm)	Measuring (MOhm)
Channel X	200	200
Channel Y	200	200
Channel Z	200	200

8. Low Battery Alarm Voltage (Typical values for information)

Typical values	Alarm Level (VDC)
Supply (+ Vcc)	+7.9
Supply (- Vcc)	-7.6

9. Power Consumption (Typical values for information)

Typical values	Switched off (mA)	Stand by (mA)	Transmitting (mA)
Supply (+ Vcc)	+0.01	+6	+14
Supply (- Vcc)	-0.01	-8	-9

7. EUT Testing Position and Antenna Location

Test Position 1



Test Position 2



Test Position 3



Test Position 5



