

EUT Internal Photos

Figure 7

M/N: 880E, General Appearance (Removed USB Extend Seat)



Figure 8

M/N: 880E, USB Extend Seat, General Appearance



Figure 9
M/N: 880E, Internal View (Removed Battery Cover)



Figure 10
M/N: 880E, Internal View (Removed Cover)

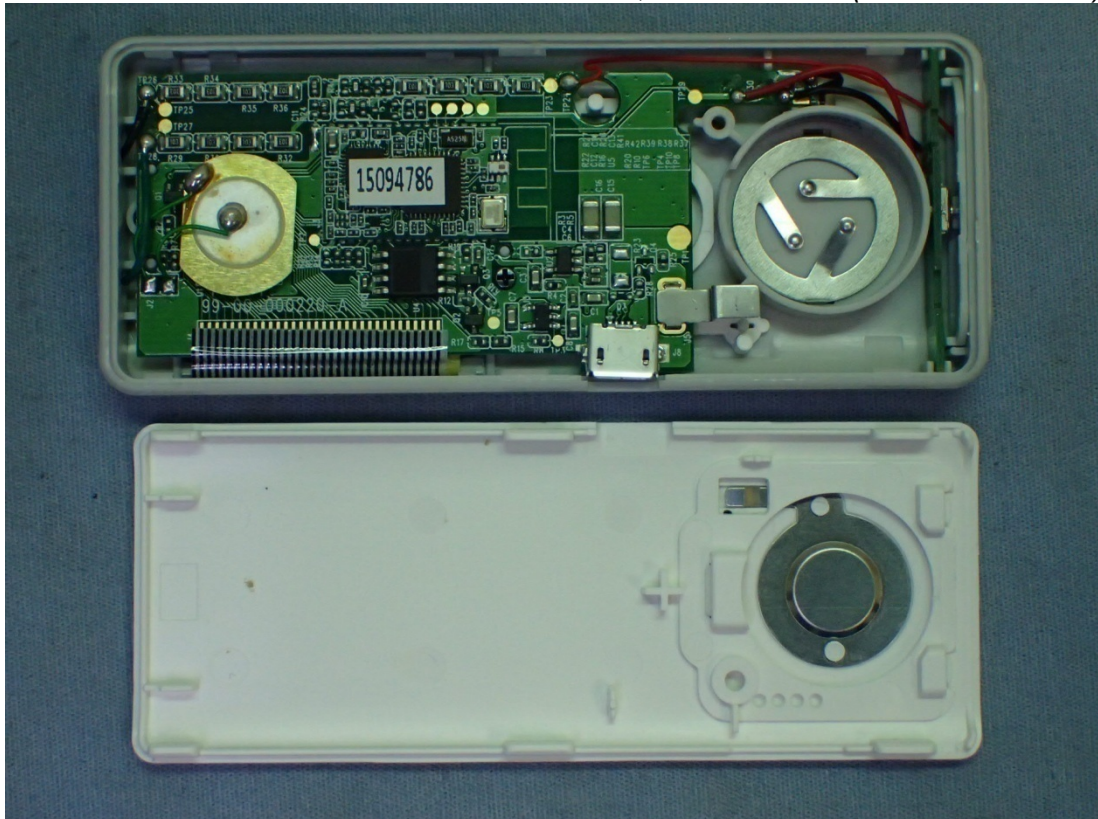


Figure 11
M/N: 870E, Internal View (Removed Battery Cover)



Figure 12
M/N: 870E, Internal View (Removed Cover)



Figure 13
M/N: 880E, Internal View (Main Board, Front View)(with USB Port)

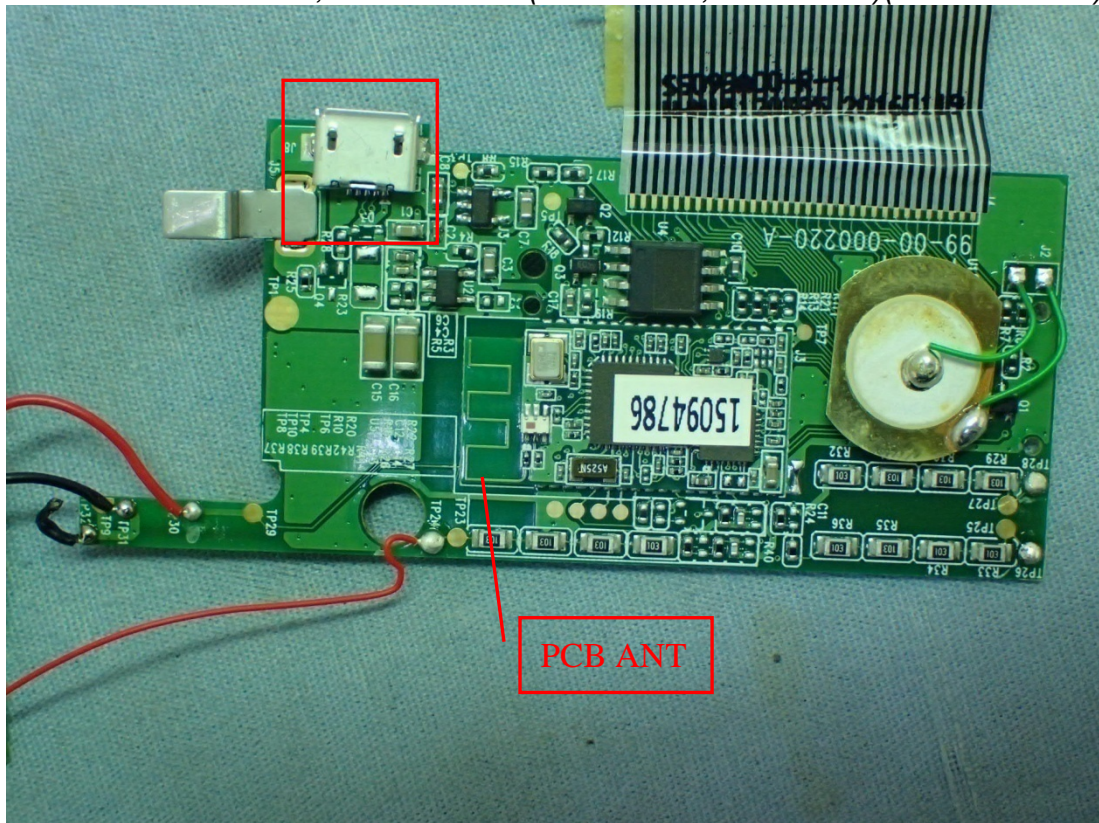


Figure 14
M/N: 870E, Internal View (Main Board, Front View)(without USB Port)

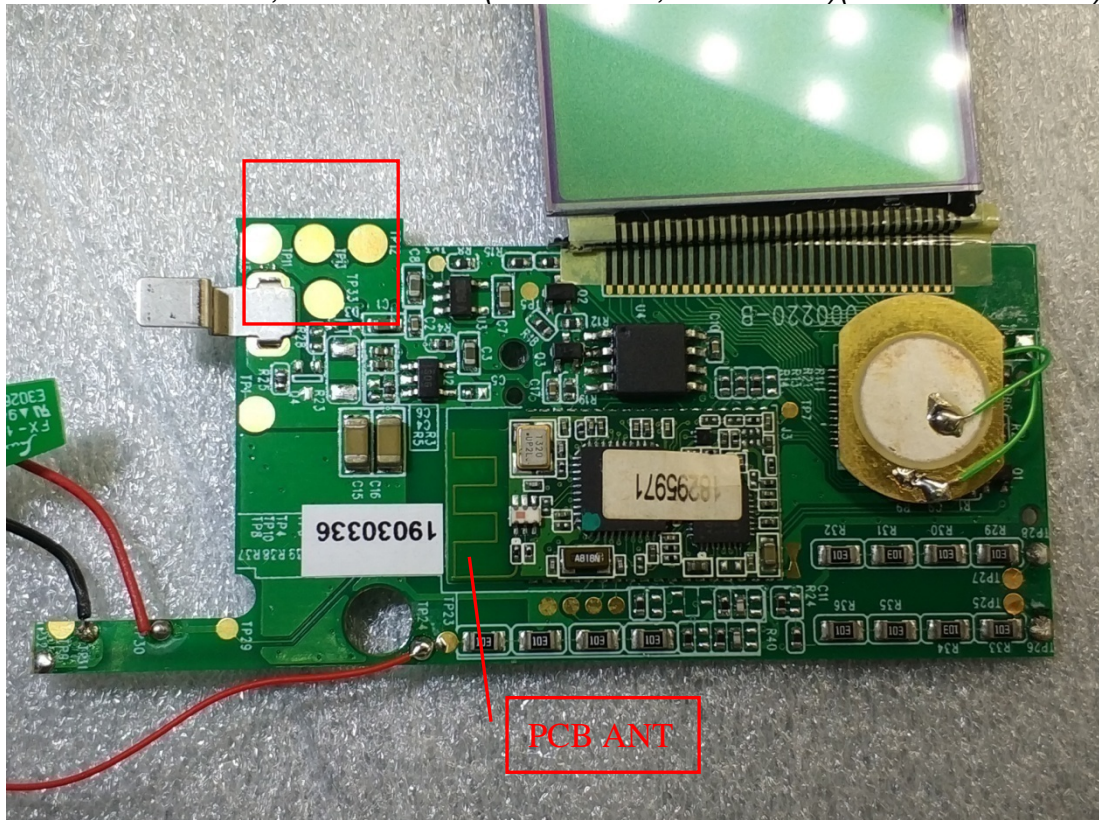


Figure 15
Internal View (Main Board, Back View)

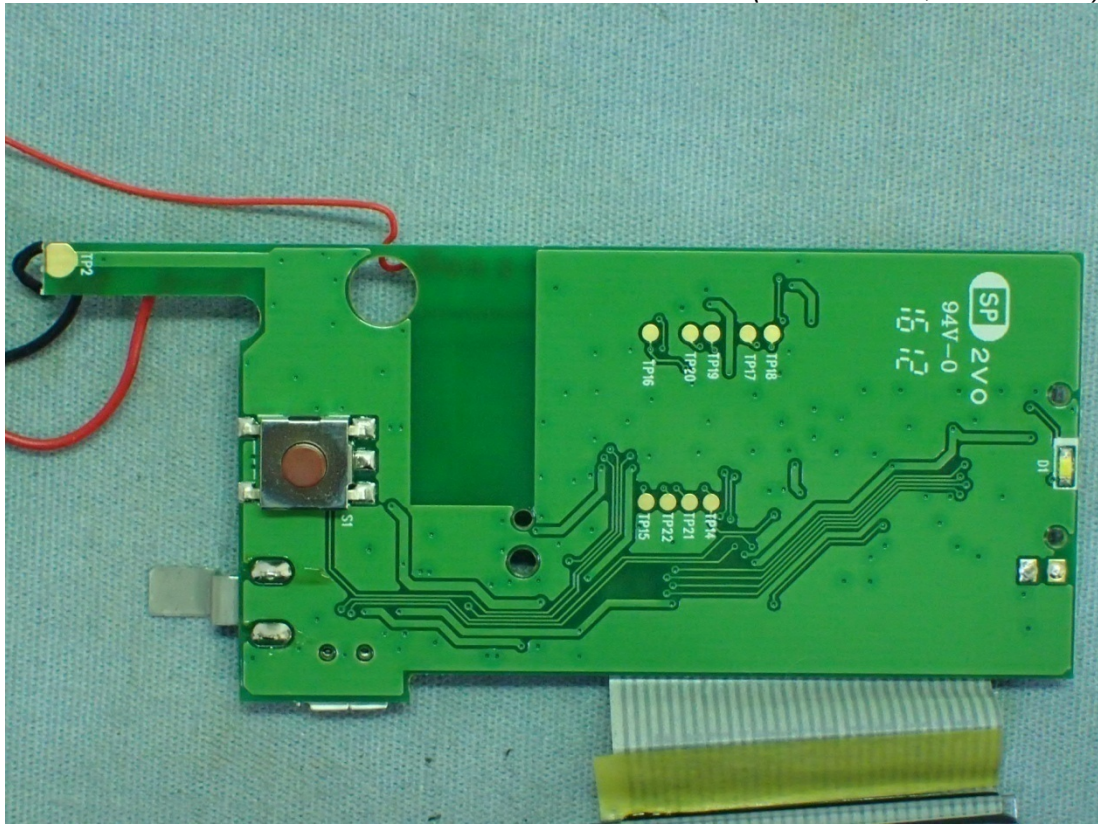


Figure 16
RF IC View

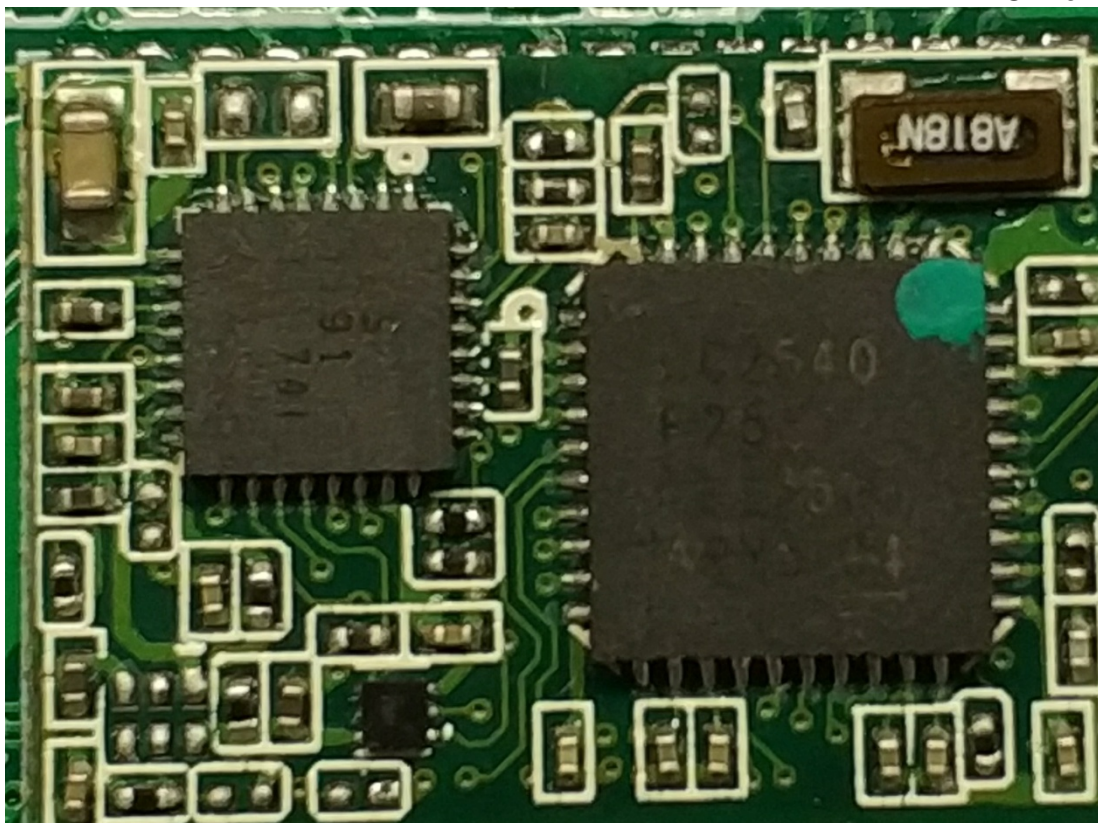


Figure 17
Internal View (Panel, Front View)

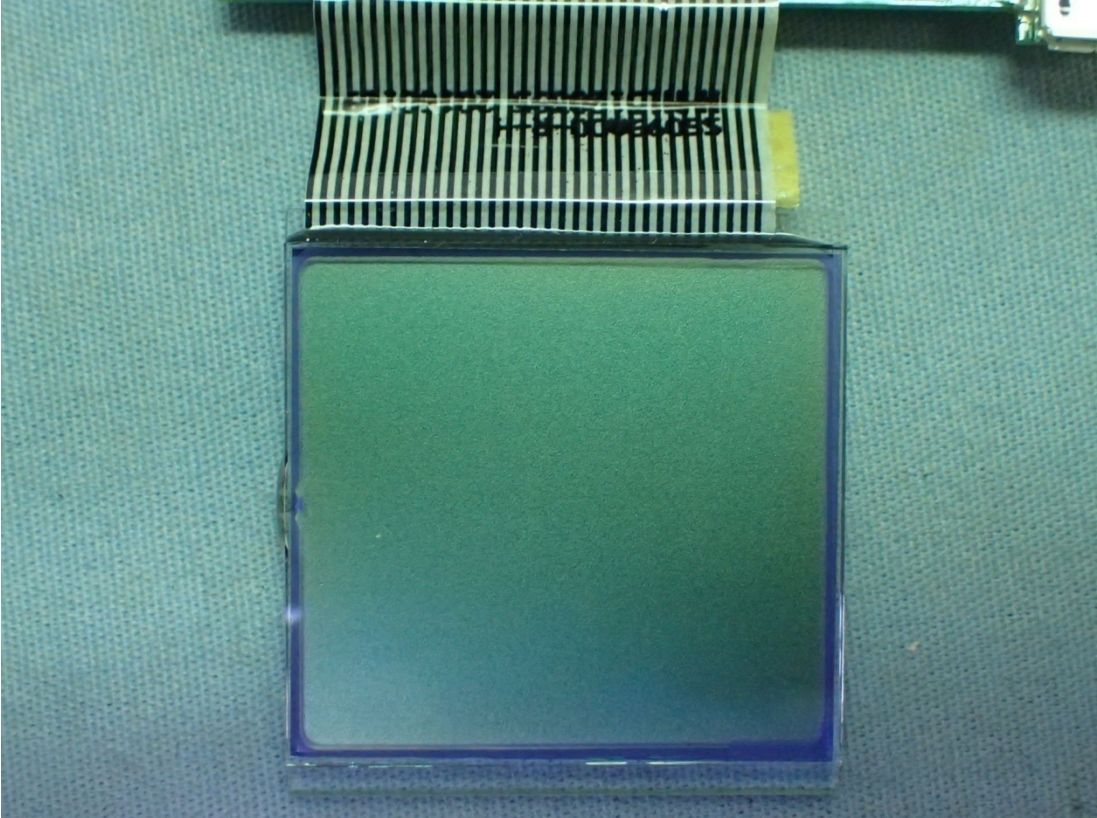


Figure 18
Internal View (Panel, Back View)

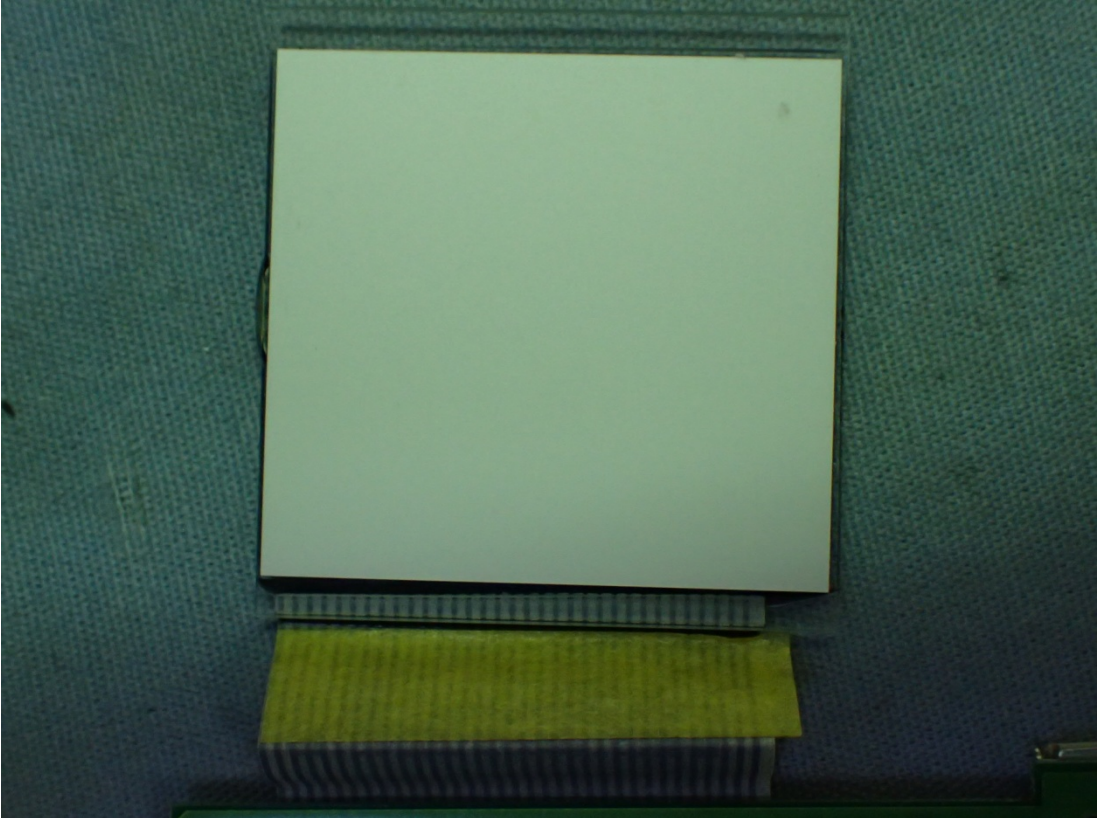


Figure 19
Internal View (Switch Board, Front View)

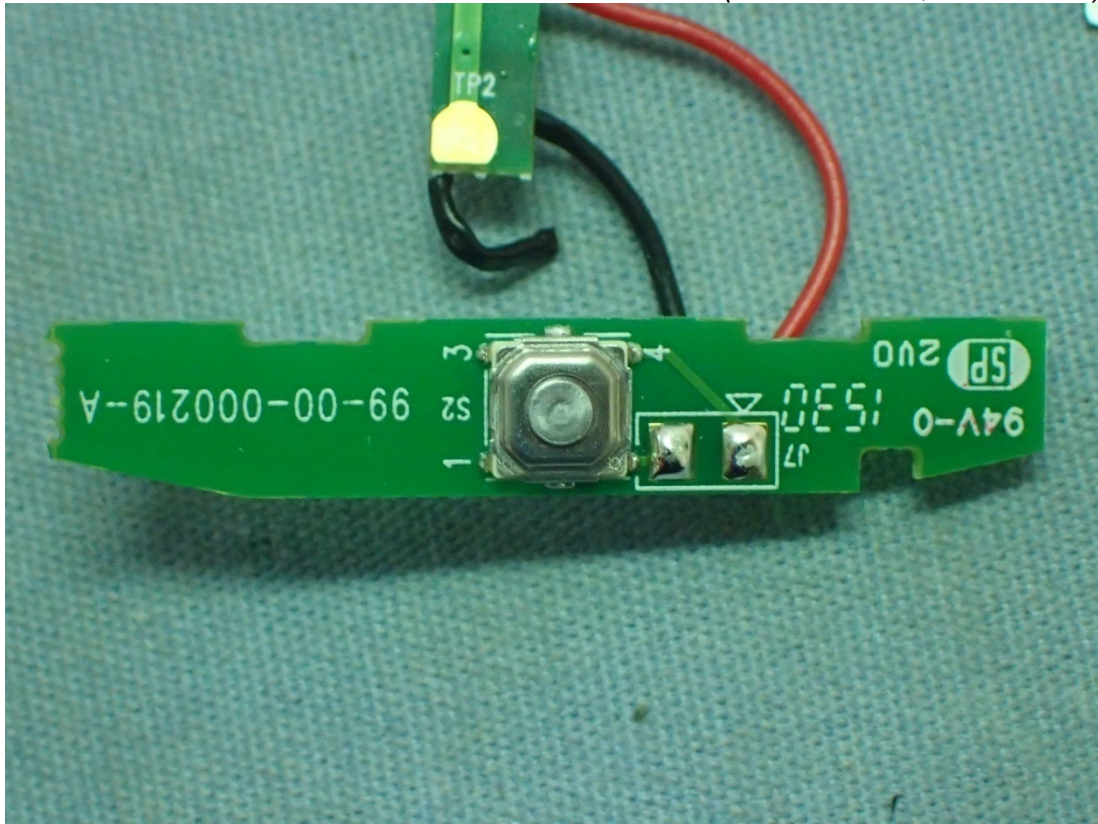


Figure 20
Internal View (Switch Board, Back View)

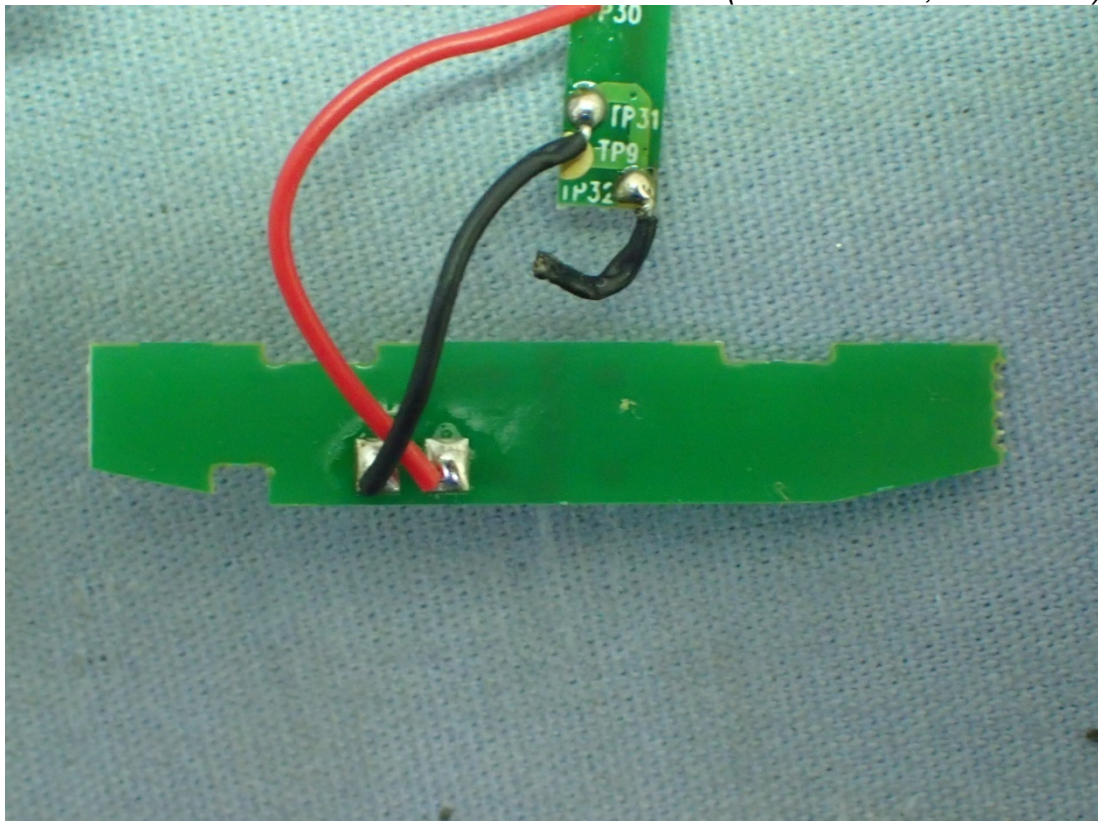


Figure 21
M/N: 880E, Internal View (Main Board, Front View)(with USB Port)
(RemovedRF Module)

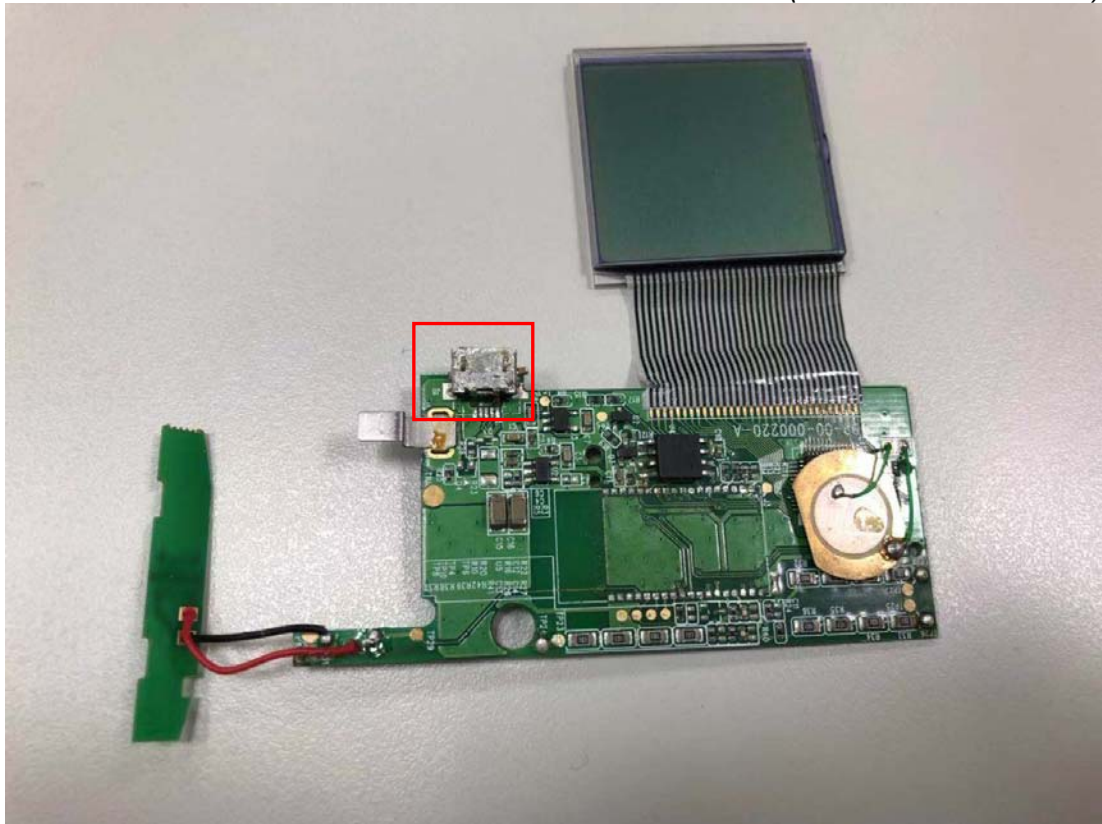


Figure 22
M/N: 870E, Internal View (Main Board, Front View)(without USB Port)
(RemovedRF Module)

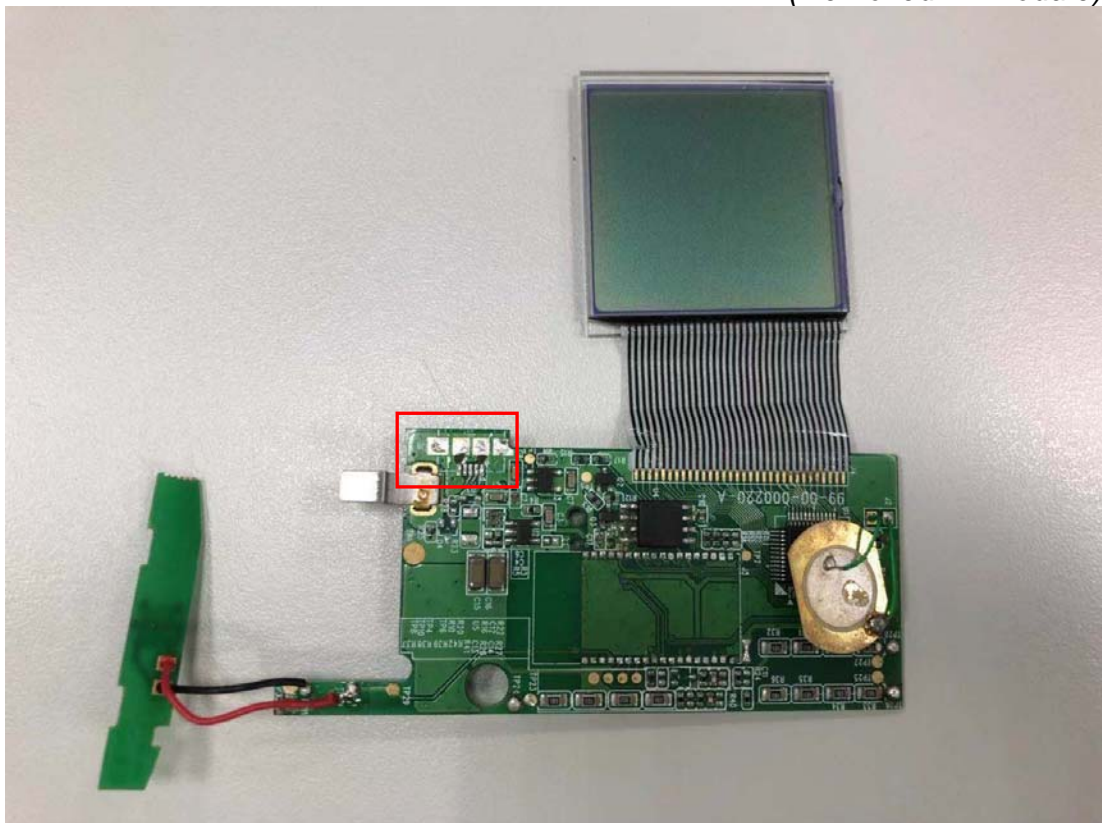


Figure 23
Internal View (RF Module, Front View)

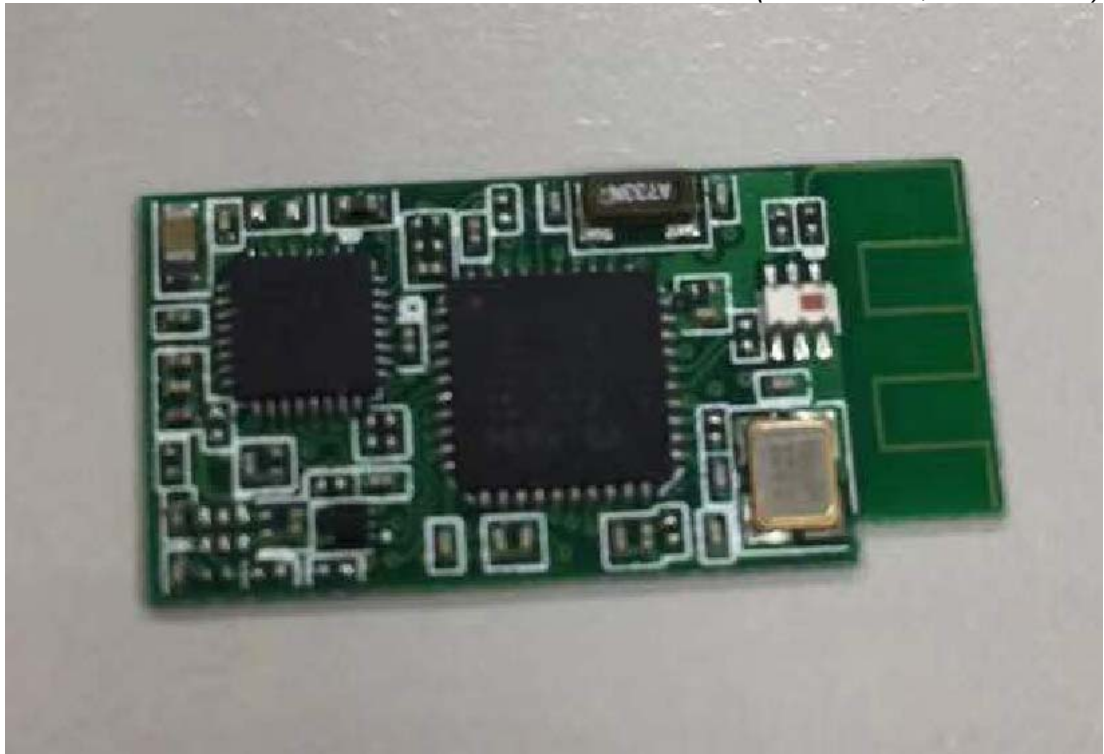


Figure 24
Internal View (RF Module, Back View)

