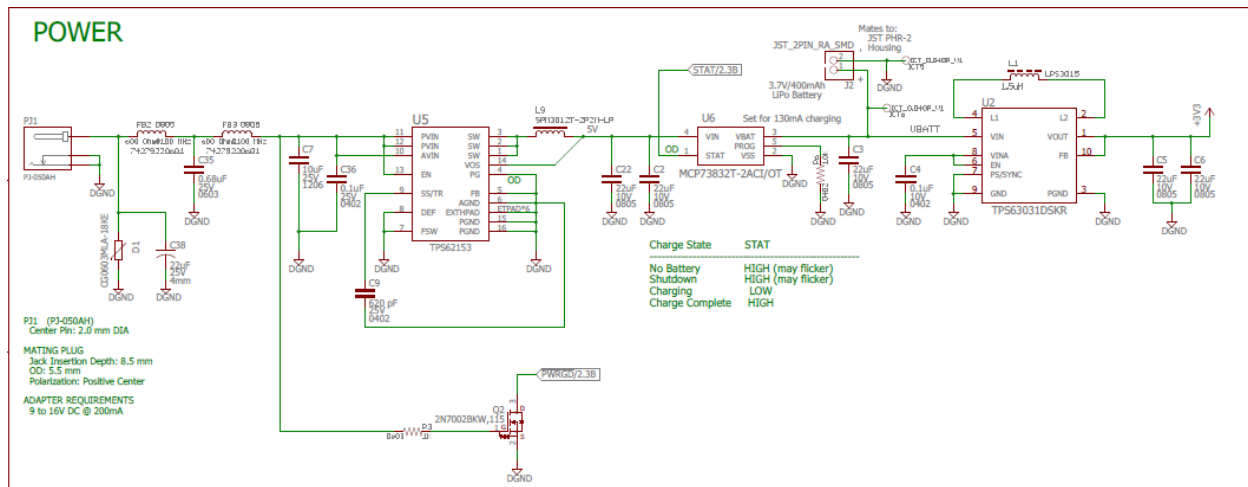
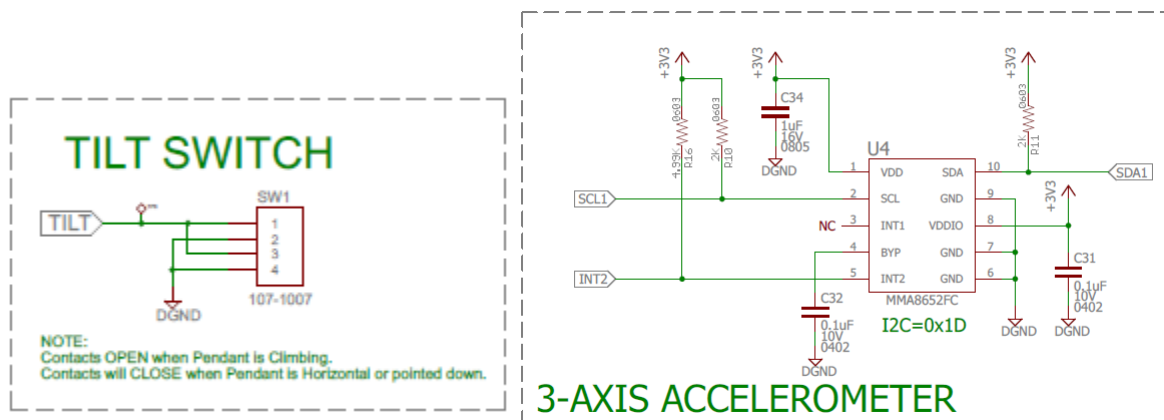


New Charging Circuit



The tilt switch was replaced with a 3-axis accelerometer. See below:



The Microprocessor ATMEGA328-AU was replaced with ATMEGA328PB-AU.

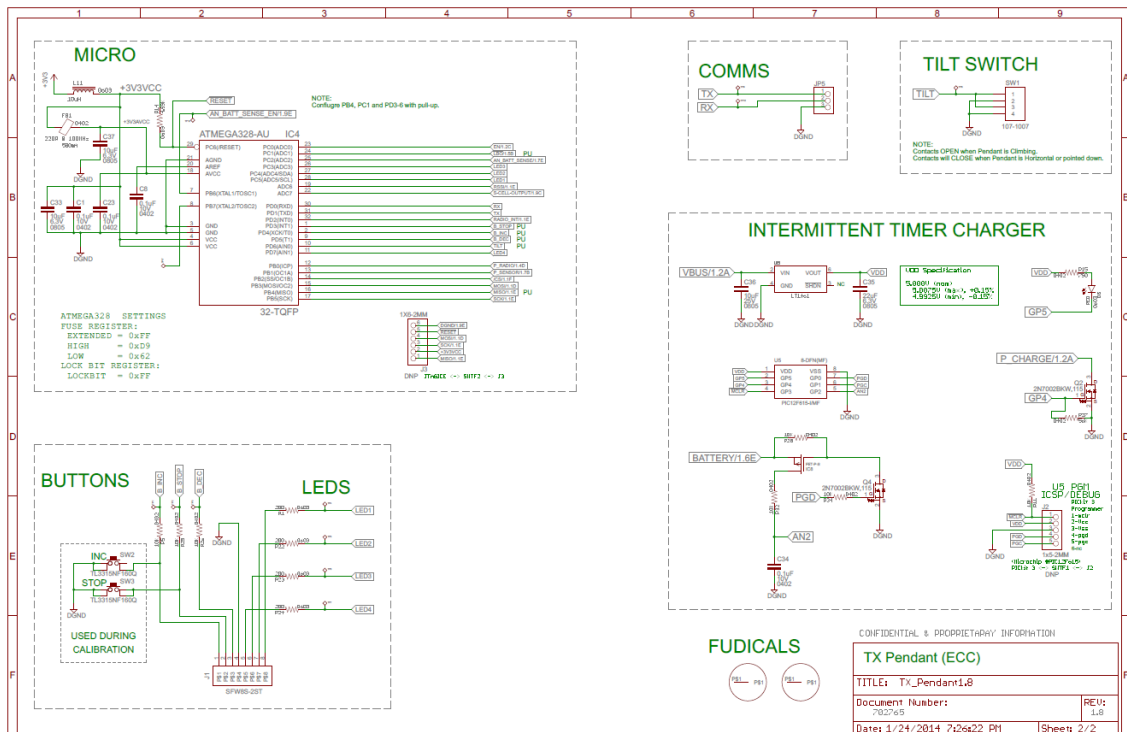
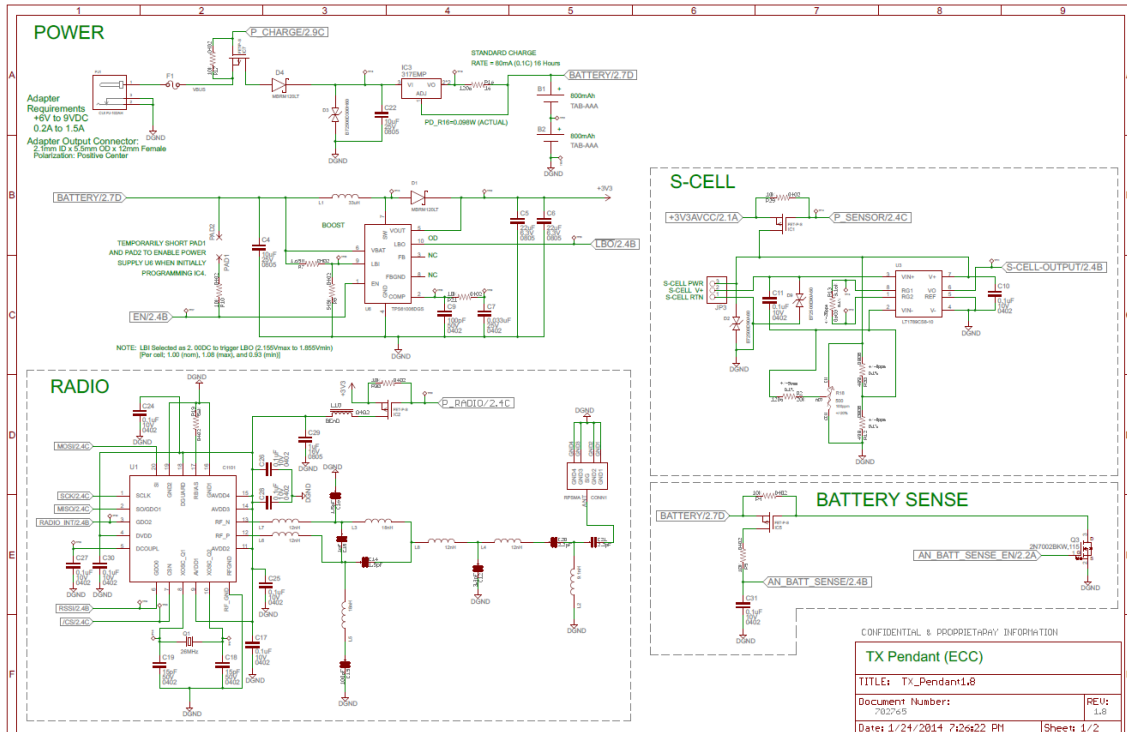
All RF properties have remained unchanged.

Best Regards,

Morgan Knickrehm, PE

Appendix

Old Schematic:



New Schematic:

