



Deutsche  
Akkreditierungsstelle  
D-PL-12053-01-00

**Annex acc. to FCC Title 47 CFR Part 15  
relating to  
s.m.s, smart microwave sensors GmbH  
UMRR-0C Type 42**

# **Annex no. 6**

## **Test Setup Photographs**

**Title 47 - Telecommunication  
Part 15 - Radio Frequency Devices  
Subpart C – Intentional Radiators  
ANSI C63.4-2014  
ANSI C63.10-2013**

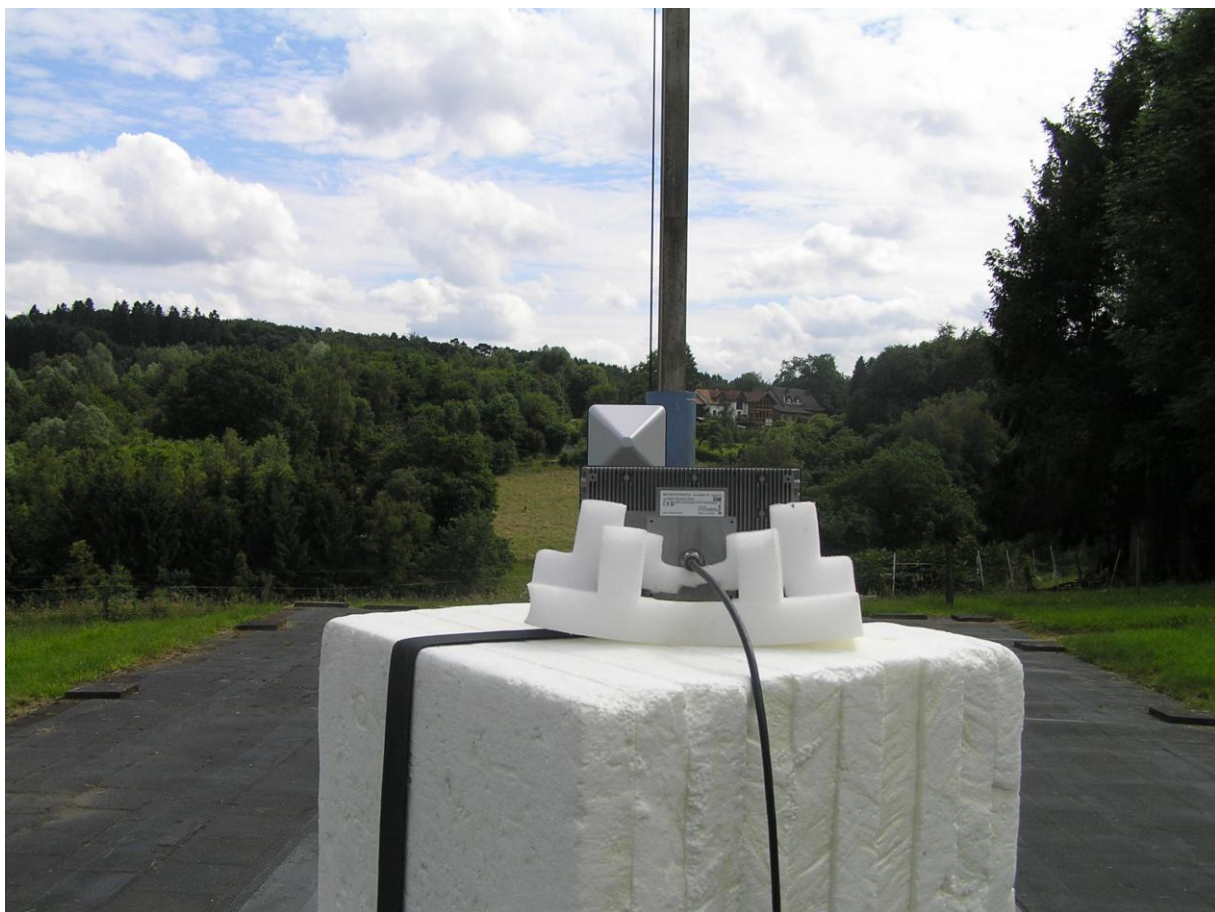
**Photo to the test: Restricted bands of operation / Radiated emission limits / Field Strength**

**Frequency range: 30 MHz – 1 GHz**



EUT: UMRR-0C Type 42    FCC ID: W34UMRR0C2AX    FCC Title 47 CFR Part 15 C    Date of issue: 2016-08-01

Frequency range: 1 GHz – 12.75 GHz



EUT: UMRR-0C Type 42    FCC ID: W34UMRR0C2AX    FCC Title 47 CFR Part 15 C    Date of issue: 2016-08-01

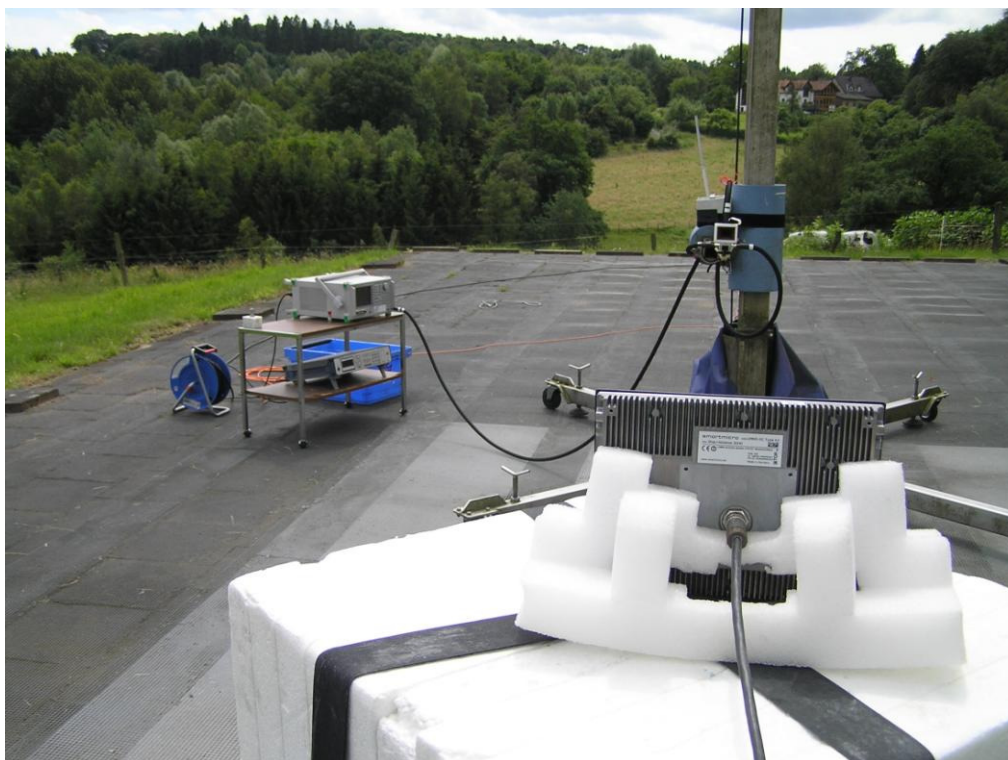
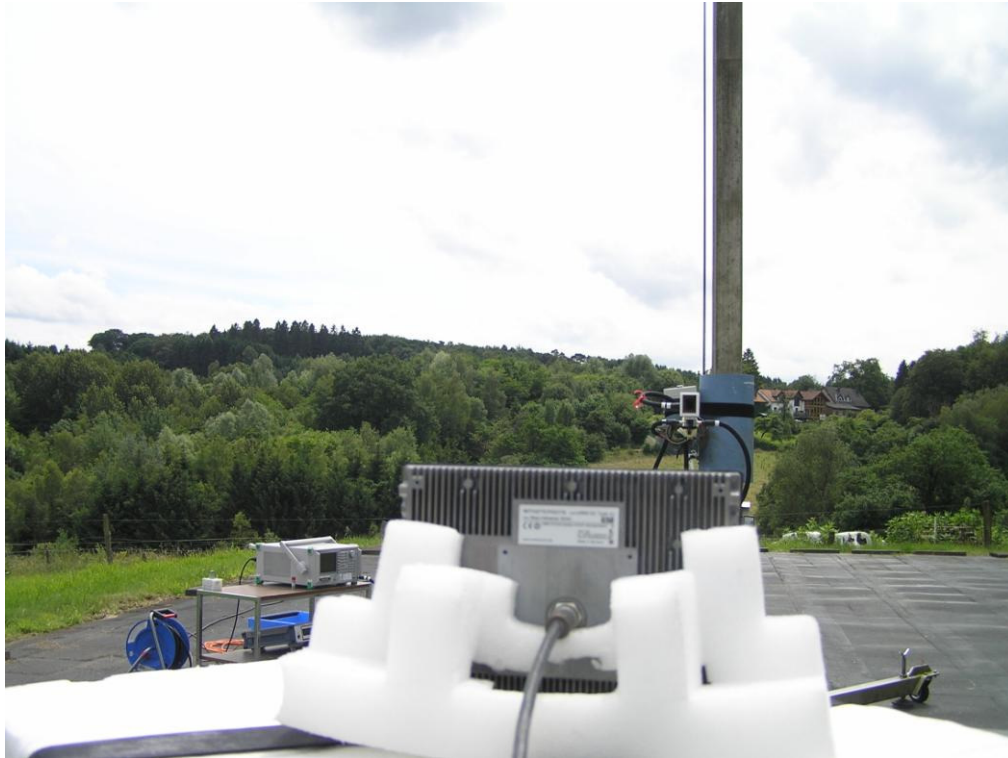
Frequency range: 12.75 GHz – 18 GHz





EUT: UMRR-0C Type 42    FCC ID: W34UMRR0C2AX    FCC Title 47 CFR Part 15 C    Date of issue: 2016-08-01

Frequency range: 18 GHz – 26.5 GHz



EUT: UMRR-0C Type 42    FCC ID: W34UMRR0C2AX    FCC Title 47 CFR Part 15 C    Date of issue: 2016-08-01

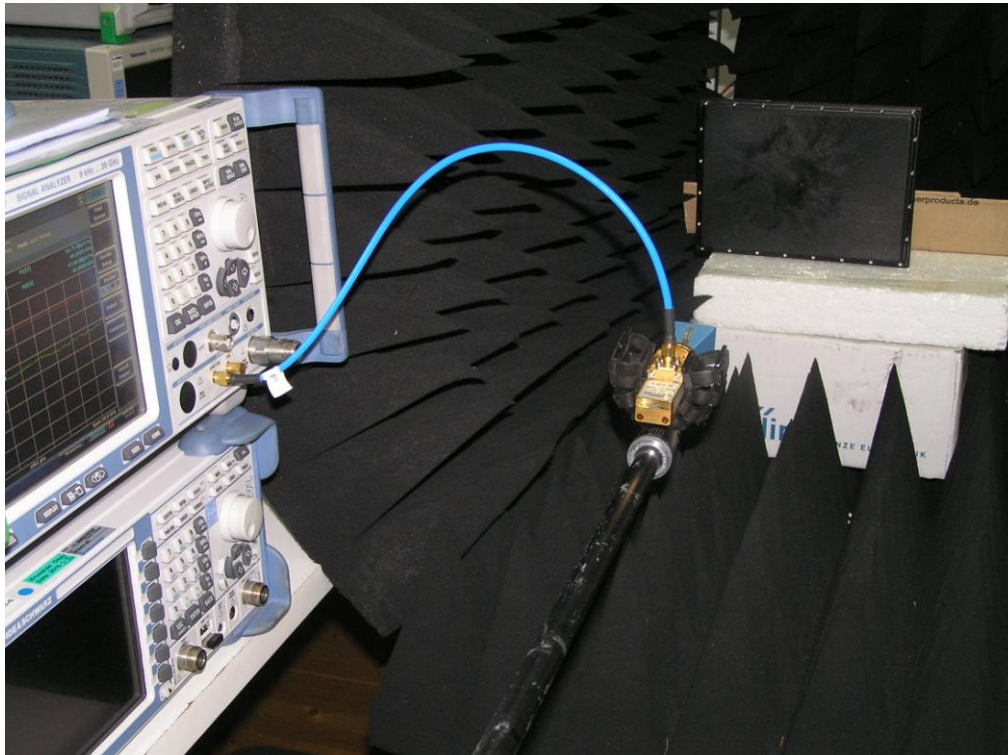
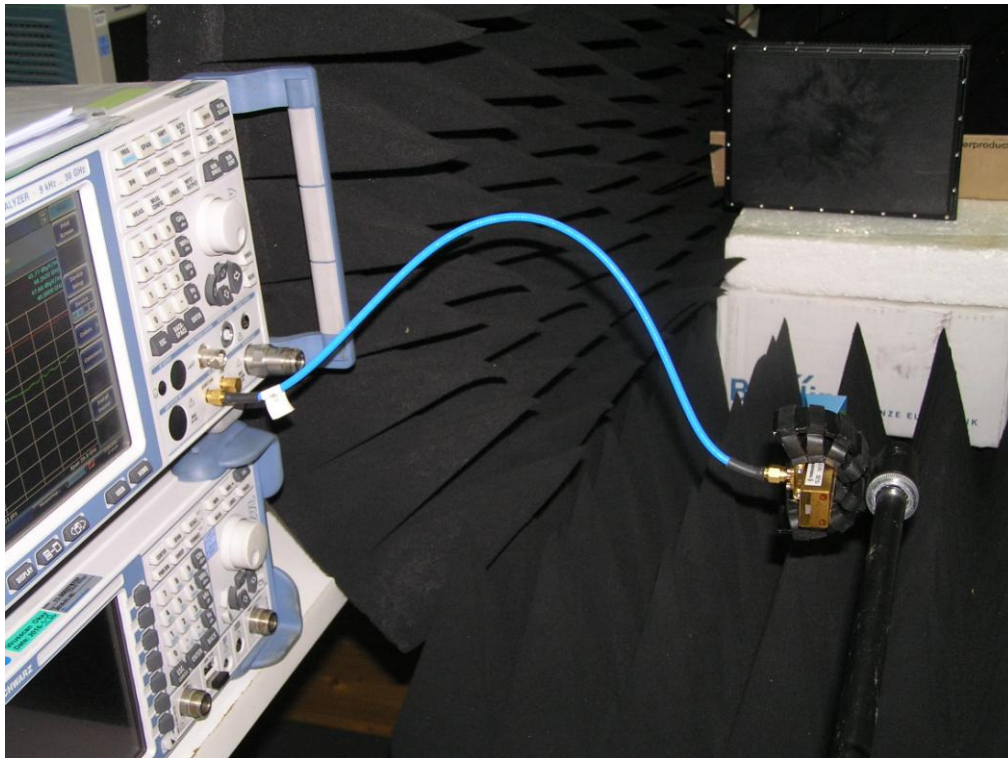
Frequency range: 26.5 GHz – 40 GHz





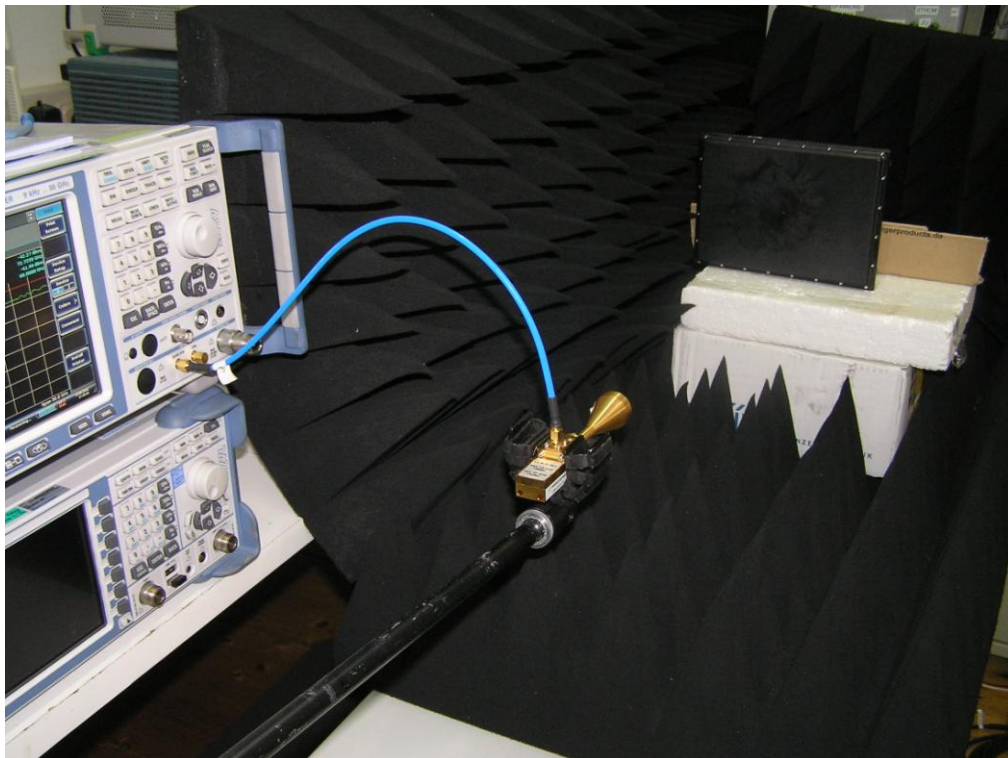
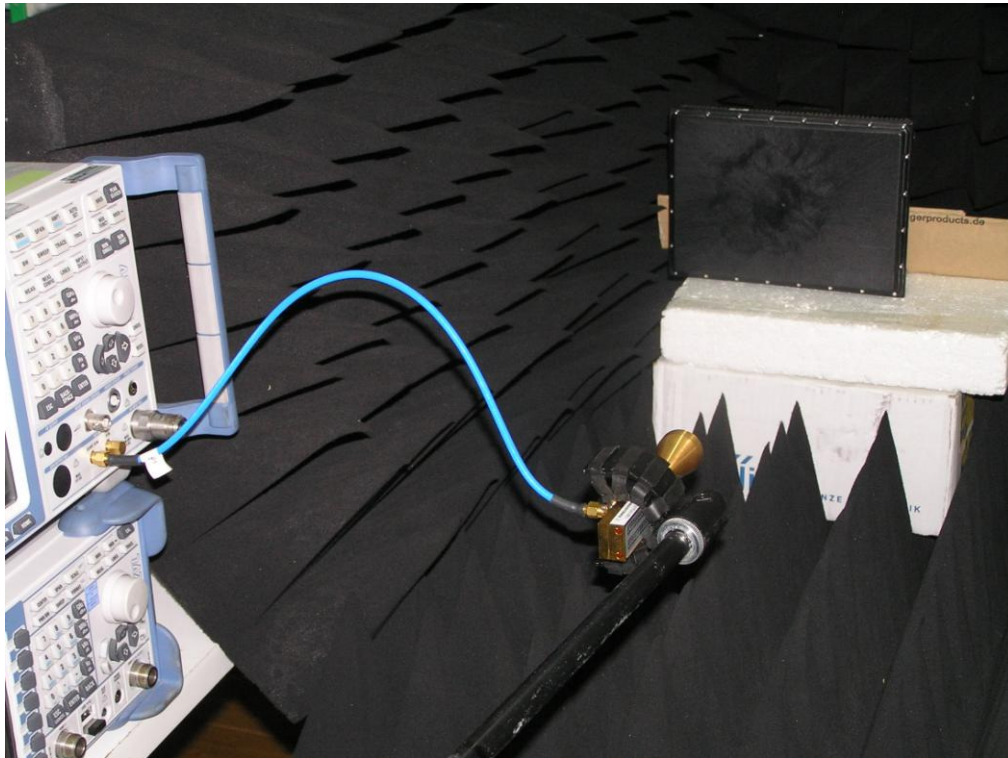
EUT: UMRR-0C Type 42    FCC ID: W34UMRR0C2AX    FCC Title 47 CFR Part 15 C    Date of issue: 2016-08-01

Frequency range: 40 GHz – 60 GHz



EUT: UMRR-0C Type 42    FCC ID: W34UMRR0C2AX    FCC Title 47 CFR Part 15 C    Date of issue: 2016-08-01

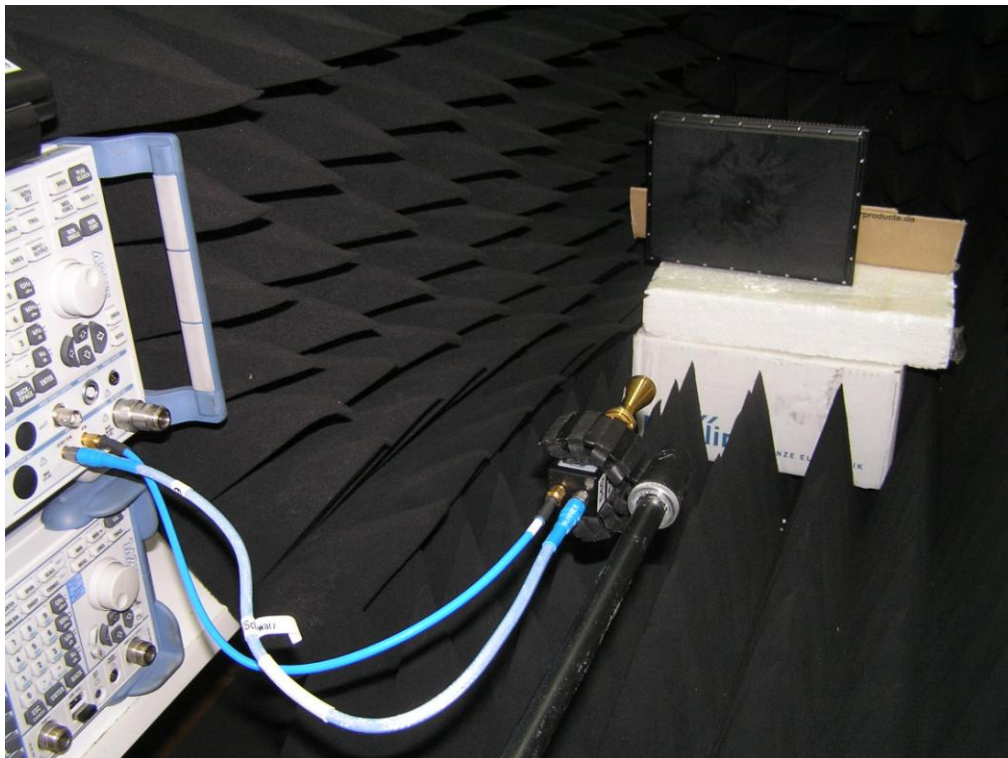
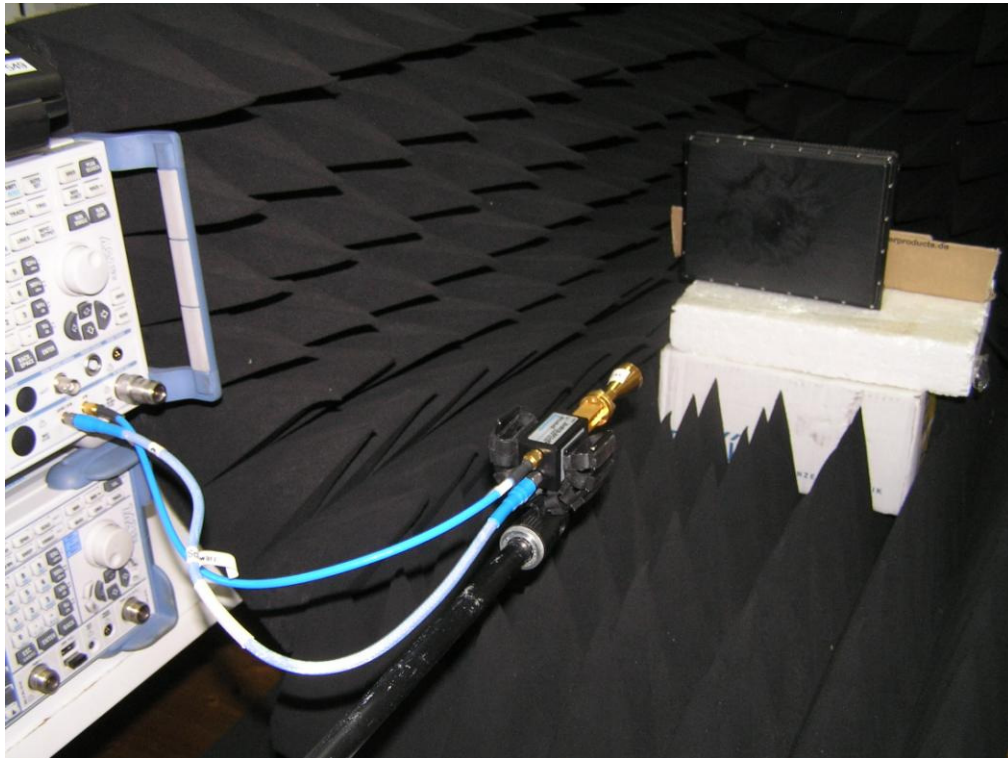
Frequency range: 60 GHz – 90 GHz





EUT: UMRR-0C Type 42    FCC ID: W34UMRR0C2AX    FCC Title 47 CFR Part 15 C    Date of issue: 2016-08-01

Frequency range: 90 GHz – 140 GHz



**Photo to the test: AC power line conducted emission**

**Serial port (RSS485)**



**LAN port**

