

WSDB-702GN

Setup Guide

Rev. 0.0

1. WLAN Function Quick Start Guide

Physical hardware configuration likes as figure1. Please follow the following procedure step by step to get starting WLAN function.

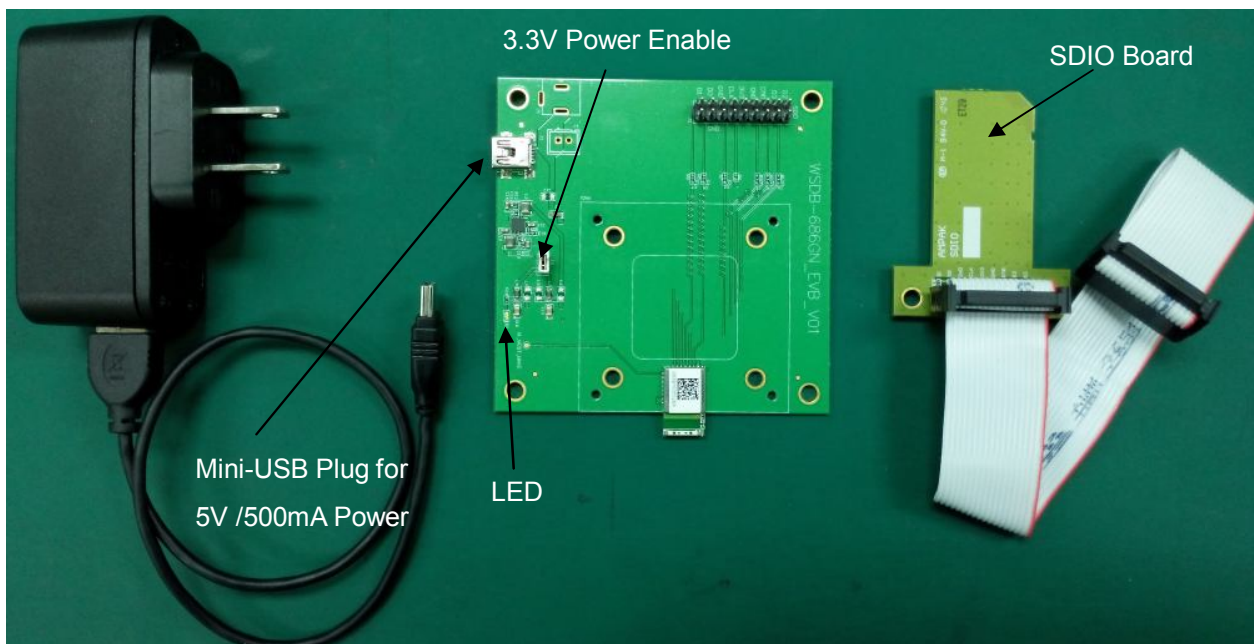


Figure1. Wi-Fi EVB

Hardware setup:

- ◆ Step1: Use the Mini-USB to A-type USB Cable to supply the power by PC USB Hub or 5V USB Adapter.
- ◆ Step2: Connects the SDIO board to WSDB-702GN Test board through the 18P IDE bus. (Or the NB with SDIO Interface)
- ◆ Step3: Insert the SDIO board into the Slot, the LED will flash one times. When the Module works normally, the LED will keep lighting

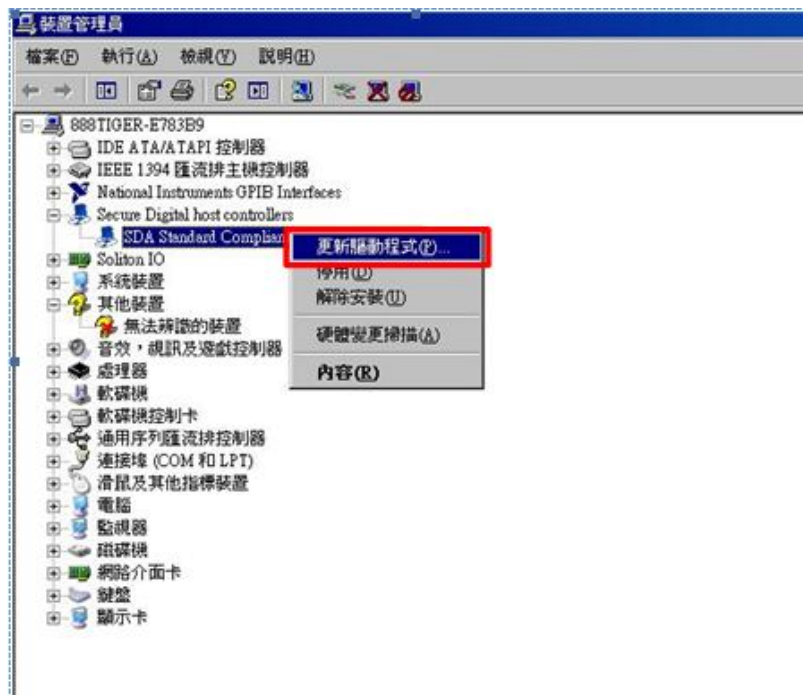
Software setup:

Follow driver installation procedure steps to install the WSDB-702GN driver on your PC (OS: XP).

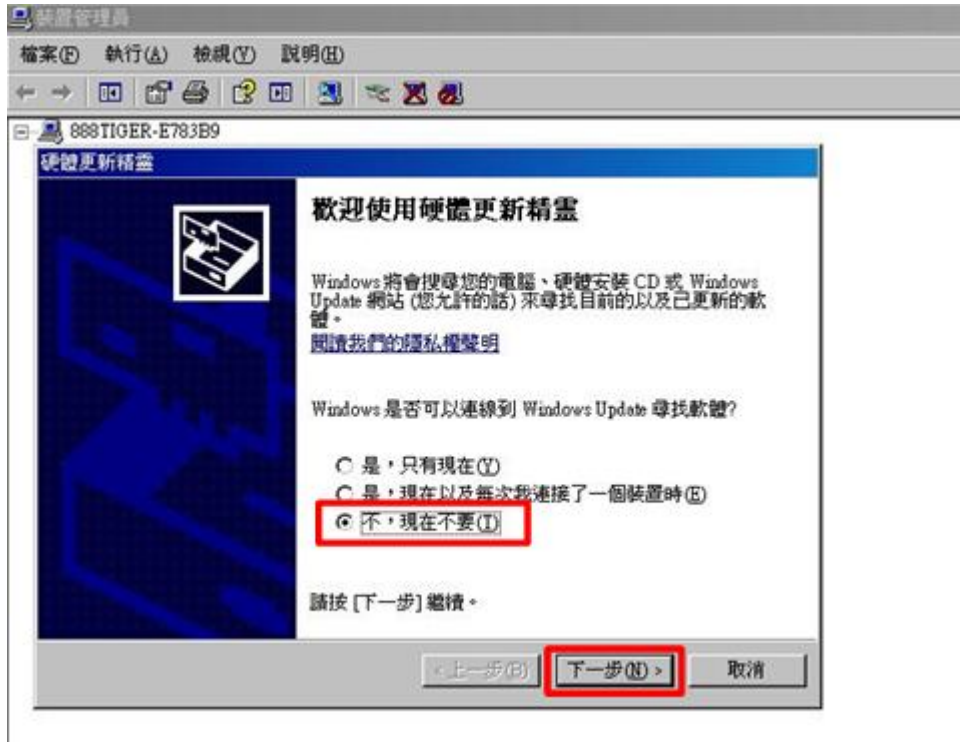
1-1. Copy WSDB-702GN_NVRAM_V1.0_20131025_KC.txt to
C:\Windows\system32\Drivers

1-2. Copy wl.exe to C:\Windows\system32\

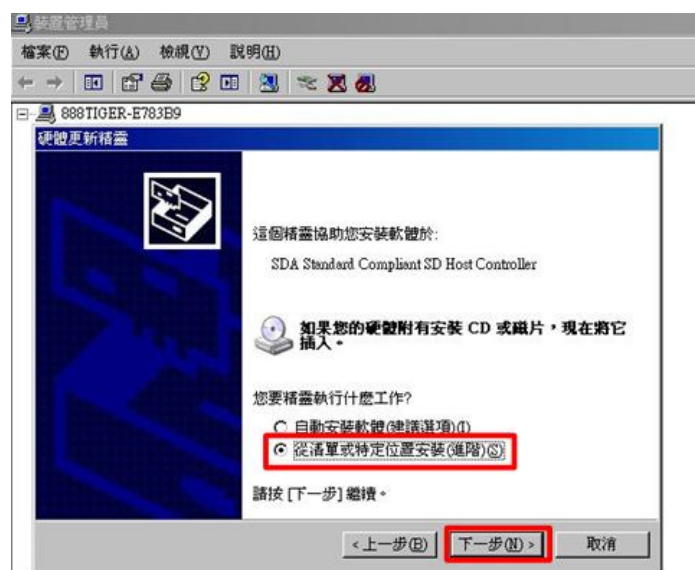
1-3. In Device Manager, choose SDA Standard Compliant SD Host Controller and click right button of mouse and then choose Update driver(更新驅動程式).



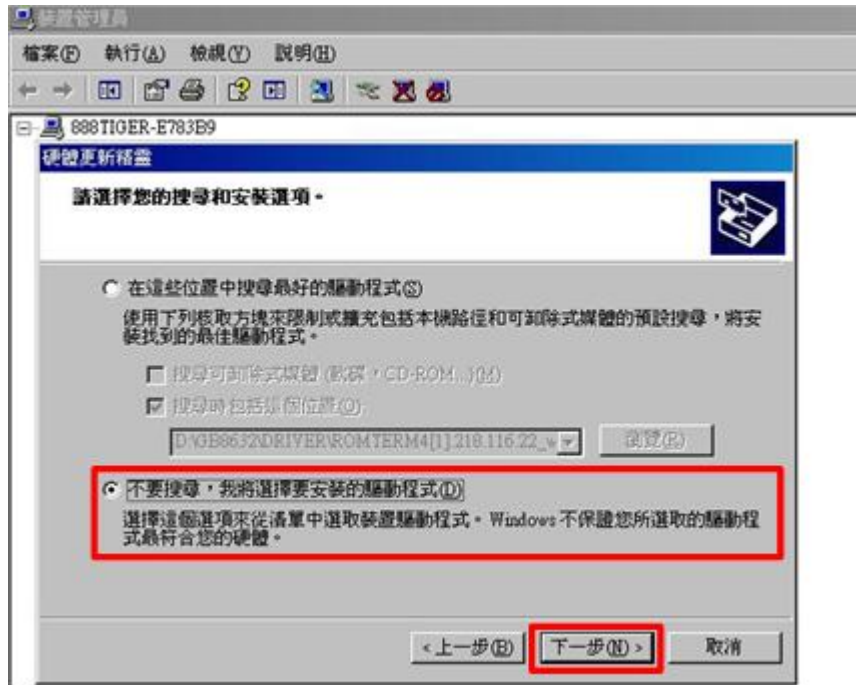
1-5. Choose No, not now(不，現在不要), and then click Next(下一步).



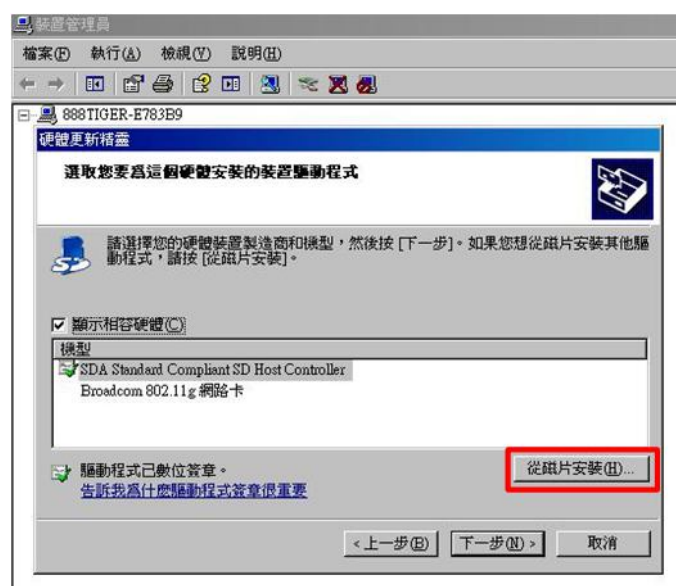
1-6. Choose install from a list or specific location (Advanced)(從清單或特定位置安裝(進階)), and then click Next(下一步).



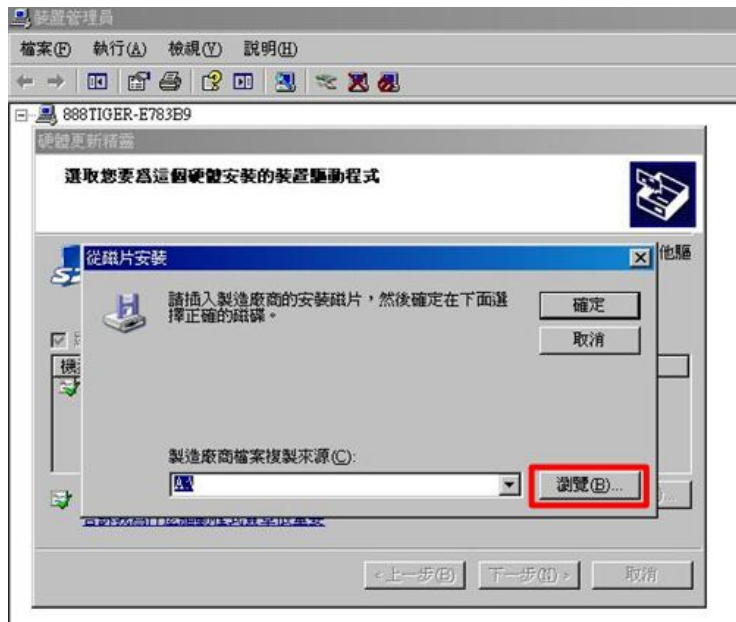
1-7. Choose Don't search, I will choose driver to install(不要收尋, 我將選擇要安裝的驅動程式), and then click Next(下一步).



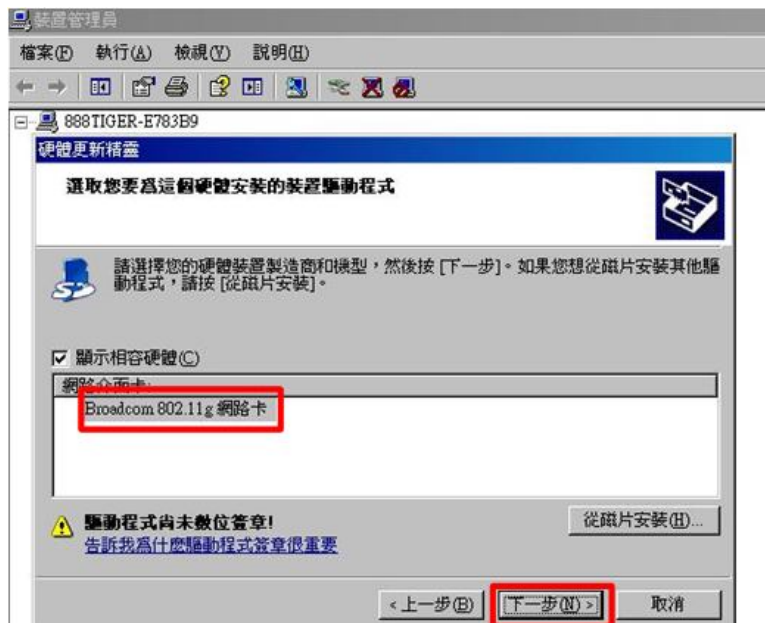
1-8. Click Have Disk(從磁片安裝).



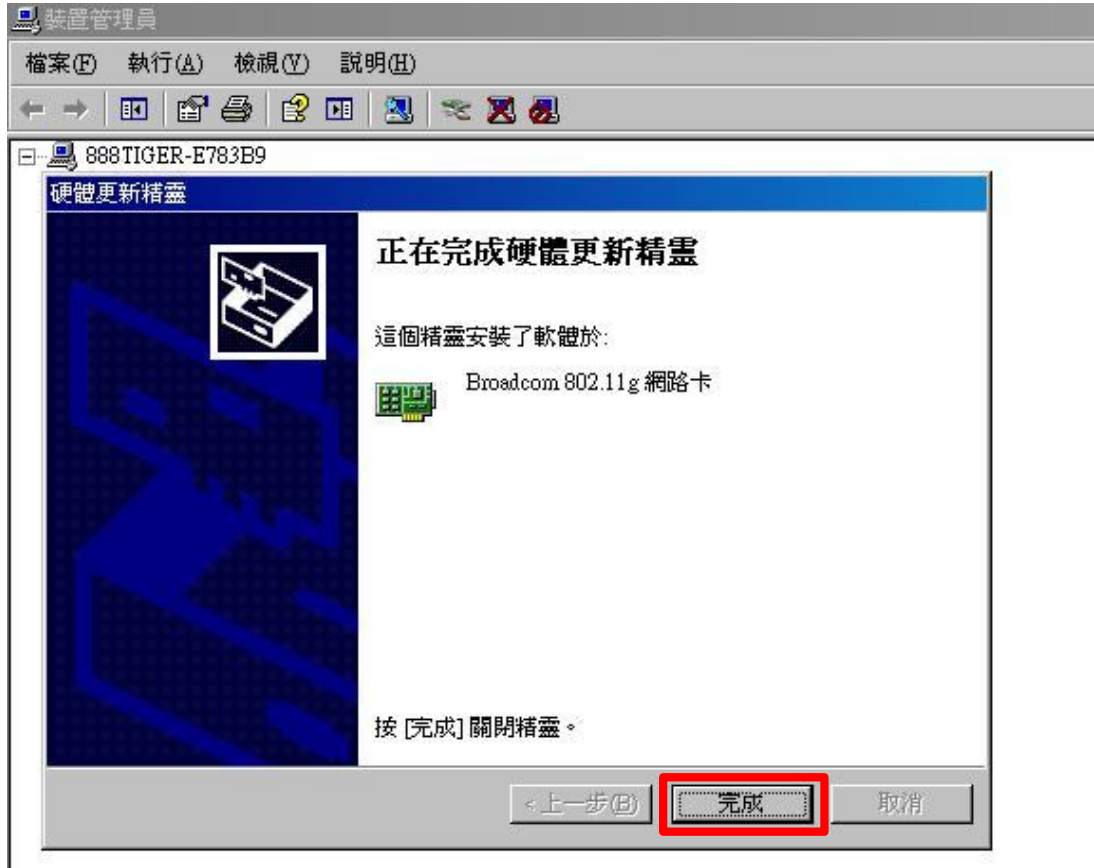
1-8. Click Browse to choose correct directory of Driver
(Your path)\bcmstdhd.inf and click OK to next step.



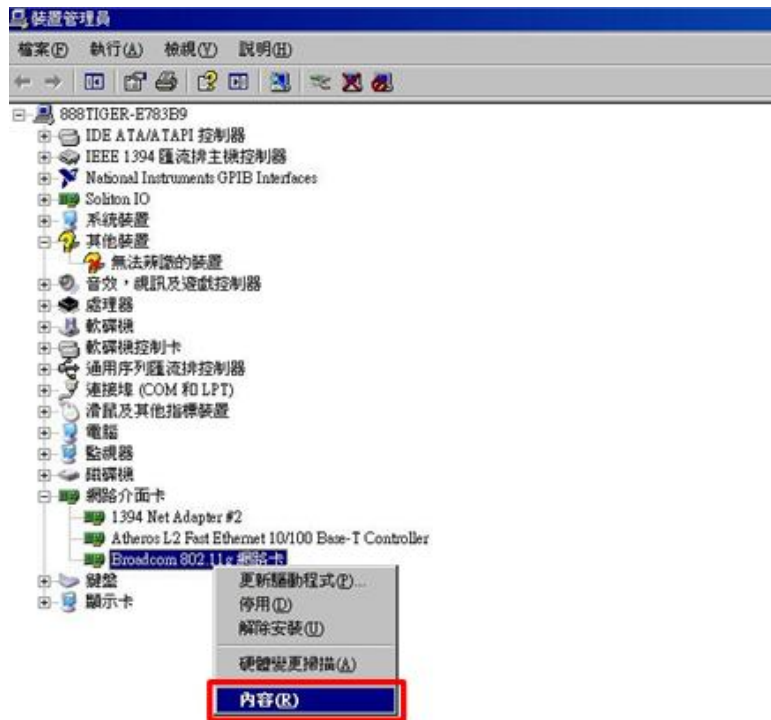
1-10. Choose Broadcom 802.11g Network Adapter(802.11g 網路卡) and click Next(下一步) to install driver.



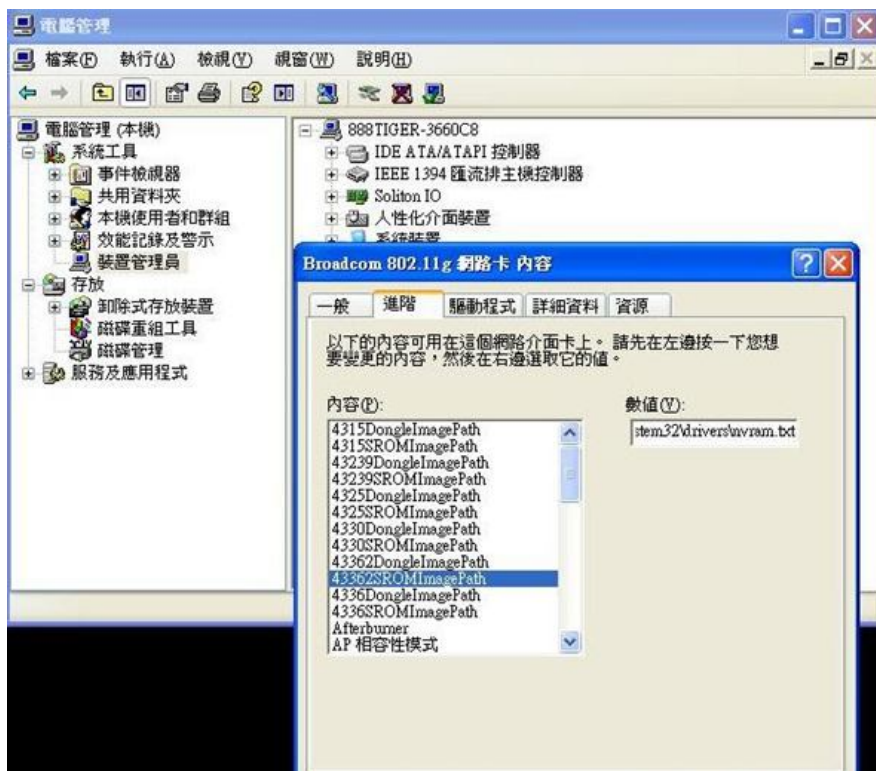
1-11. Click Finish(完成) and you can check the device is working fine in Device Manager.



1-12. In Device Manager, Choose Broadcom 802.11g Network Adapter (Broadcom 802.11g 網路卡) and click right button of mouse and then choose content(內容).



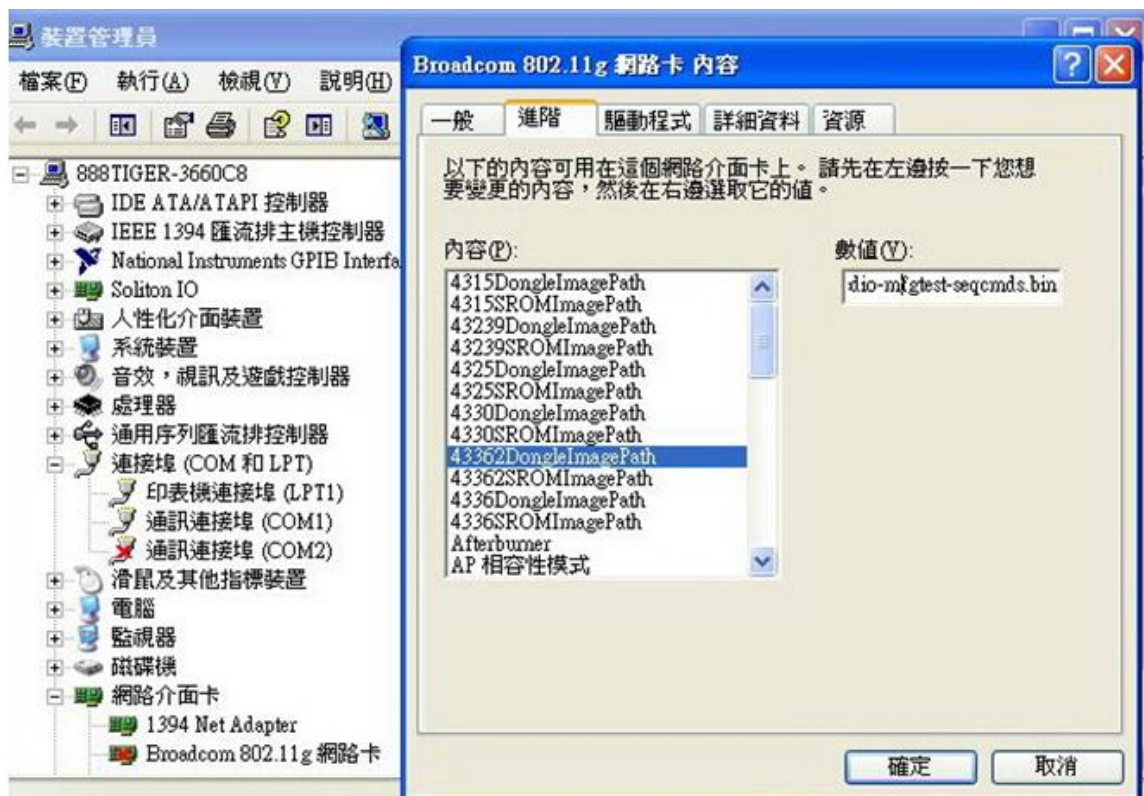
1-13. In the tab of Advanced, choose



1-14. In the tab of Advanced, choose 43362ROMImagePatch item and replace with
\\SystemRoot\system32\drivers\
WSDB-702GN_NVRAM_V1.0_20131025_KC.txt and then click OK(確定)
button.

1-15. Copy sdio-mfgtest-seqcmds_20121105.bin to
C:\Windows\system32\drivers

1-16. In the tab of Advanced, choose 43362DongleImagePatch item and replace with
\\SystemRoot\system32\drivers**sdio-mfgtest-seqcmds_20121105.bin** and then click
OK(確定) button



Federal Communication Commission

Interference Statement

This device complies with Part 15 of the FCC Rules. Operation is subject to the following two conditions: (1) This device may not cause harmful interference, and (2) this device must accept any interference received, including interference that may cause undesired operation.

This equipment has been tested and found to comply with the limits for a Class B digital device, pursuant to Part 15 of the FCC Rules. These limits are designed to provide reasonable protection against harmful interference in a residential installation. This equipment generates, uses and can radiate radio frequency energy and, if not installed and used in accordance with the instructions, may cause harmful interference to radio communications. However, there is no guarantee that interference will not occur in a particular installation. If this equipment does cause harmful interference to radio or television reception, which can be determined by turning the equipment off and on, the user is encouraged to try to correct the interference by one of the following measures:

- Reorient or relocate the receiving antenna.
- Increase the separation between the equipment and receiver.
- Connect the equipment into an outlet on a circuit different from that to which the receiver is connected.
- Consult the dealer or an experienced radio/TV technician for help.

FCC Caution: Any changes or modifications not expressly approved by the party responsible for compliance could void the user's authority to operate this equipment.

This transmitter must not be co-located or operating in conjunction with any other antenna or transmitter.

Radiation Exposure Statement:

The product comply with the FCC portable RF exposure limit set forth for an uncontrolled environment and are safe for intended operation as described in this manual. The further RF exposure reduction can be achieved if the product can be kept as far as possible from the user body or set the device to lower output power if such function is available.

For body-worn operating conditions please use belt-clips, holsters, and/or accessories that have no metallic component in the assembly and must provide at least 0.2cm separation between the device and the user's body.

This device is intended only for OEM integrators under the following conditions:

- 1) The module antenna must be installed to keep at least 0.2cm from the user body.
- 2) The transmitter module may not be co-located with any other transmitter or antenna.

As long as 2 conditions above are met, further transmitter test will not be required. However, the OEM integrator is still responsible for testing their end-product for any additional compliance requirements required with this module installed

IMPORTANT NOTE: In the event that these conditions can not be met (for example certain laptop configurations or co-location with another transmitter), then the FCC authorization is no longer considered valid and the FCC ID can not be used on the final product. In these circumstances, the OEM integrator will be responsible for re-evaluating the end product (including the transmitter) and obtaining a separate FCC authorization.

End Product Labeling

This transmitter module is authorized only for use in a devices where the antenna may be installed such that 0.2cm can be maintained between the antenna and users body The final end product must be labeled in a visible area with the following:“Contains FCC ID: W2Z-02100004”. The grantee's FCC ID can be used only when all FCC compliance requirements are met.

Manual Information To the End User

The OEM integrator has to be aware not to provide information to the end user regarding

how to install or remove this RF module in the user's manual of the end product which integrates this module.

The end user manual shall include all required regulatory information/warning as show in this manual.

Industry Canada statement:

This device complies with RSS-210 of the Industry Canada Rules. Operation is subject to the following two conditions: (1) This device may not cause harmful interference, and (2) this device must accept any interference received, including interference that may cause undesired operation.

Ce dispositif est conforme à la norme CNR-210 d'Industrie Canada applicable aux appareils radio exempts de licence. Son fonctionnement est sujet aux deux conditions suivantes: (1) le dispositif ne doit pas produire de brouillage préjudiciable, et (2) ce dispositif doit accepter tout brouillage reçu, y compris un brouillage susceptible de provoquer un fonctionnement indésirable.

Radiation Exposure Statement:

The product comply with the Canada portable RF exposure limit set forth for an uncontrolled environment and are safe for intended operation as described in this manual. The further RF exposure reduction can be achieved if the product can be kept as far as possible from the user body or set the device to lower output power if such function is available.

For body-worn operating conditions please use belt-clips, holsters, and/or accessories that have no metallic component in the assembly and must provide at least 0.2cm separation between the device and the user's body.

Déclaration d'exposition aux radiations:

Le produit est conforme aux limites d'exposition pour les appareils portables RF pour les Etats-Unis et le Canada établies pour un environnement non contrôlé.

Le produit est sûr pour un fonctionnement tel que décrit dans ce manuel. La réduction aux expositions RF peut être augmentée si l'appareil peut être conservé aussi loin que possible du corps de l'utilisateur ou que le dispositif est réglé sur la puissance de sortie la plus faible si une telle fonction est disponible.

This device is intended only for OEM integrators under the following conditions: (For module device use)

- 1) The module antenna must be installed to keep at least 0.2cm from the user body.
- 2) The transmitter module may not be co-located with any other transmitter or antenna.

As long as 2 conditions above are met, further transmitter test will not be required. However, the OEM integrator is still responsible for testing their end-product for any additional compliance requirements required with this module installed.

Cet appareil est conçu uniquement pour les intégrateurs OEM dans les conditions suivantes: (Pour utilisation de dispositif module)

- 1) Le produit peut être utilisé que dans des dispositifs d'exploitation de corps porte, par exemple dans une caméra sans le viseur, soit pour le corps ou le fonctionnement à main seulement et l'antenne du module doit être installée afin de maintenir au moins 0,2 cm à partir du corps de l'utilisateur.
- 2) Le module émetteur peut ne pas être coïmplanté avec un autre émetteur ou antenne.

Tant que les 2 conditions ci-dessus sont remplies, des essais supplémentaires sur l'émetteur ne seront pas nécessaires. Toutefois, l'intégrateur OEM est toujours responsable des essais sur son produit final pour toutes exigences de conformité supplémentaires requis pour ce module installé.

IMPORTANT NOTE:

In the event that these conditions can not be met (for example certain laptop configurations or co-location with another transmitter), then the Canada authorization is no longer considered valid and the IC ID can not be used on the final product. In these circumstances, the OEM integrator will be responsible for re-evaluating the end product (including the transmitter) and obtaining a separate Canada authorization.

NOTE IMPORTANTE:

Dans le cas où ces conditions ne peuvent être satisfaites (par exemple pour certaines configurations d'ordinateur portable ou de certaines co-localisation avec un autre émetteur), l'autorisation du Canada n'est plus considéré comme valide et l'ID IC ne peut pas être utilisé sur le produit final. Dans ces circonstances, l'intégrateur OEM sera chargé de réévaluer le produit final (y compris l'émetteur) et l'obtention d'une autorisation distincte au Canada.

End Product Labeling

This transmitter module is authorized only for use in device where the antenna may be installed such that 0.2cm can be maintained between the antenna and users body. The final end product must be labeled in a visible area with the following: "Contains IC:7736B-02100004".

Plaque signalétique du produit final

Ce module emetteur est autorise uniquement pour une utilisation dans un des dispositifs ou l'antenne peut etre installe de telle sorte que 0.2cm peut etre maintenue entre l'antenne et les utilisateurs corps. Le produit final doit être étiqueté dans un endroit visible avec l'inscription suivante: "Contient des IC: 7736B-02100004".

Manual Information To the End User

The OEM integrator has to be aware not to provide information to the end user regarding how to install or remove this RF module in the user's manual of the end product which integrates this module.

The end user manual shall include all required regulatory information/warning as show in this manual.

Manuel d'information à l'utilisateur final

L'intégrateur OEM doit être conscient de ne pas fournir des informations à l'utilisateur final quant à la façon d'installer ou de supprimer ce module RF dans le manuel de l'utilisateur du produit final qui intègre ce module.

Le manuel de l'utilisateur final doit inclure toutes les informations réglementaires requises et avertissements comme indiqué dans ce manuel.