

WiFi 2.4GHz_Edge 4_802.11b_Ch 11_0mm_Main

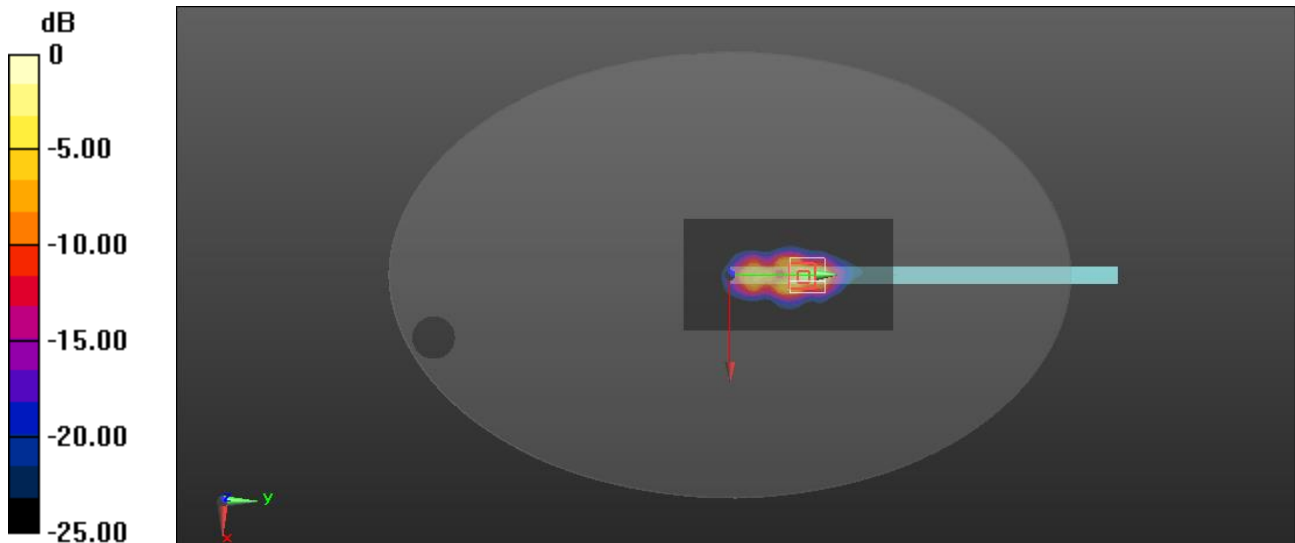
Frequency: 2462 MHz; Duty Cycle: 1:1; Room Ambient Temperature: 22.4°C; Liquid Temperature: 20.3°C
Medium parameters used : $f = 2462$ MHz; $\sigma = 1.885$ S/m; $\epsilon_r = 39.335$; $\rho = 1000$ kg/m³

DASY5 Configuration:

- Area Scan Setting: Find Secondary Maximum Within: 2.0 dB and with a peak SAR value greater than 0.0012W/kg
- Electronics: DAE4 Sn856; Calibrated: 2023/4/26
- Probe: EX3DV4 - SN3665; ConvF(7.35, 7.35, 7.35) @ 2462 MHz; Calibrated: 2023/8/18
- Sensor-Surface: 2mm (Mechanical Surface Detection)
- Phantom: ELI

Area Scan (81x151x1): Interpolated grid: dx=1.200 mm, dy=1.200 mm
Maximum value of SAR (interpolated) = 1.84 W/kg

Zoom Scan (7x7x7)/Cube 0: Measurement grid: dx=5mm, dy=5mm, dz=5mm
Reference Value = 31.40 V/m; Power Drift = -0.14 dB
Peak SAR (extrapolated) = 4.46 W/kg
SAR(1 g) = 1.15 W/kg; SAR(10 g) = 0.380 W/kg
Smallest distance from peaks to all points 3 dB below = 4 mm
Ratio of SAR at M2 to SAR at M1 = 31.5%
Maximum value of SAR (measured) = 2.21 W/kg



0 dB = 2.21 W/kg = 3.44 dBW/kg

WiFi 2.4GHz_Edge 3_802.11b_Ch 11_0mm_Aux

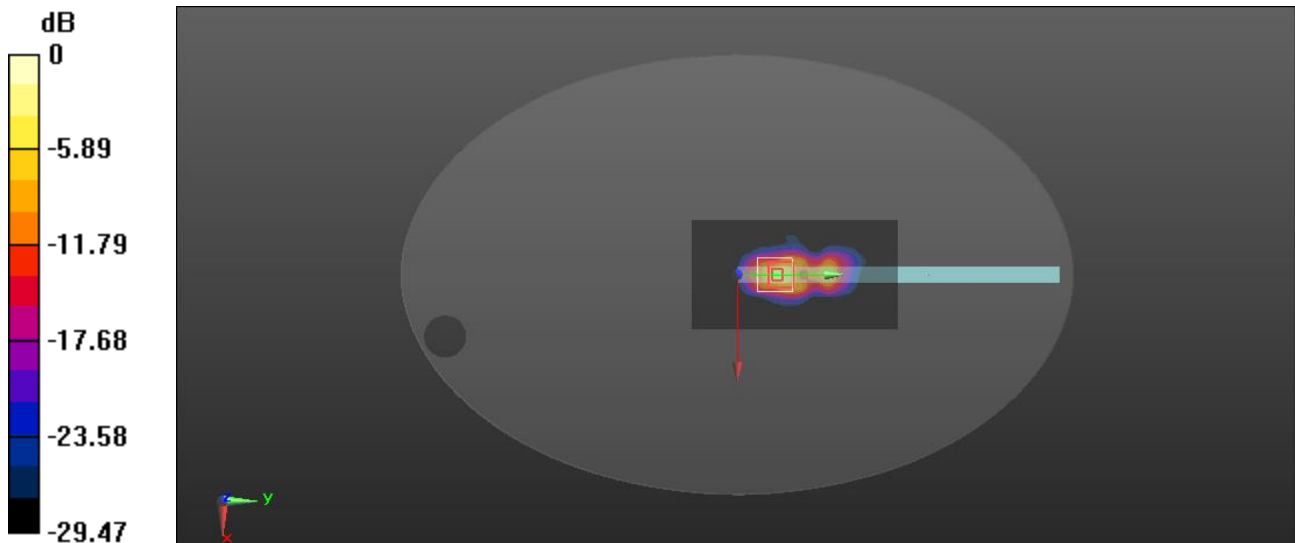
Frequency: 2462 MHz; Duty Cycle: 1:1; Room Ambient Temperature: 22.4°C; Liquid Temperature: 20.3°C
Medium parameters used : $f = 2462$ MHz; $\sigma = 1.885$ S/m; $\epsilon_r = 39.335$; $\rho = 1000$ kg/m³

DASY5 Configuration:

- Area Scan Setting: Find Secondary Maximum Within: 2.0 dB and with a peak SAR value greater than 0.0012W/kg
- Electronics: DAE4 Sn856; Calibrated: 2023/4/26
- Probe: EX3DV4 - SN3665; ConvF(7.35, 7.35, 7.35) @ 2462 MHz; Calibrated: 2023/8/18
- Sensor-Surface: 2mm (Mechanical Surface Detection)
- Phantom: ELI

Area Scan (81x151x1): Interpolated grid: dx=1.200 mm, dy=1.200 mm
Maximum value of SAR (interpolated) = 2.47 W/kg

Zoom Scan (7x7x7)/Cube 0: Measurement grid: dx=5mm, dy=5mm, dz=5mm
Reference Value = 35.52 V/m; Power Drift = -0.19 dB
Peak SAR (extrapolated) = 4.41 W/kg
SAR(1 g) = 1.17 W/kg; SAR(10 g) = 0.379 W/kg
Smallest distance from peaks to all points 3 dB below = 4.2 mm
Ratio of SAR at M2 to SAR at M1 = 31.9%
Maximum value of SAR (measured) = 2.58 W/kg



0 dB = 2.58 W/kg = 4.12 dBW/kg

WiFi 5.2GHz_Edge 4_802.11ac (VHT80)_Ch 42_0mm_Main

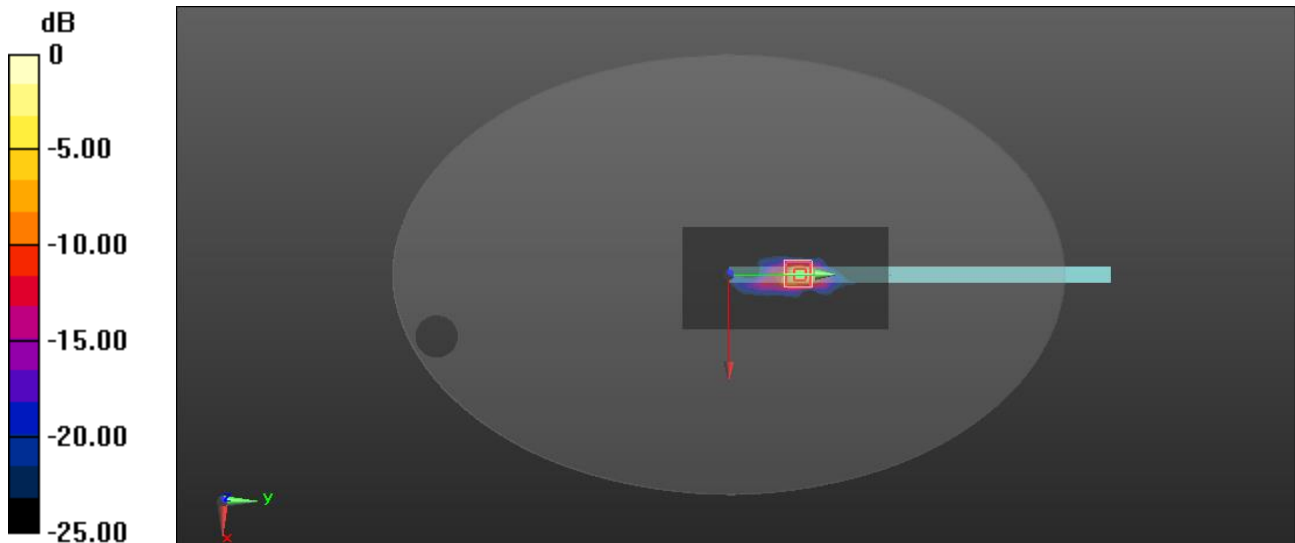
Frequency: 5210 MHz; Duty Cycle: 1:1; Room Ambient Temperature: 22.8°C; Liquid Temperature: 20.5°C
Medium parameters used: $f = 5210$ MHz; $\sigma = 4.868$ S/m; $\epsilon_r = 35.14$; $\rho = 1000$ kg/m³

DASY5 Configuration:

- Area Scan Setting: Find Secondary Maximum Within: 2.0 dB and with a peak SAR value greater than 0.0012W/kg
- Electronics: DAE4 Sn856; Calibrated: 2023/4/26
- Probe: EX3DV4 - SN3665; ConvF(5.44, 5.44, 5.44) @ 5210 MHz; Calibrated: 2023/8/18
- Sensor-Surface: 2mm (Mechanical Surface Detection)
- Phantom: ELI

Area Scan (91x181x1): Interpolated grid: dx=1.000 mm, dy=1.000 mm
Maximum value of SAR (interpolated) = 2.52 W/kg

Zoom Scan (7x7x12)/Cube 0: Measurement grid: dx=4mm, dy=4mm, dz=2mm
Reference Value = 21.40 V/m; Power Drift = -0.19 dB
Peak SAR (extrapolated) = 5.33 W/kg
SAR(1 g) = 1.03 W/kg; SAR(10 g) = 0.227 W/kg
Smallest distance from peaks to all points 3 dB below = 4.1 mm
Ratio of SAR at M2 to SAR at M1 = 55.6%
Maximum value of SAR (measured) = 2.58 W/kg



0 dB = 2.58 W/kg = 4.12 dBW/kg

WiFi 5.2GHz_Edge 3_802.11ac (VHT80)_Ch 42_0mm_Aux

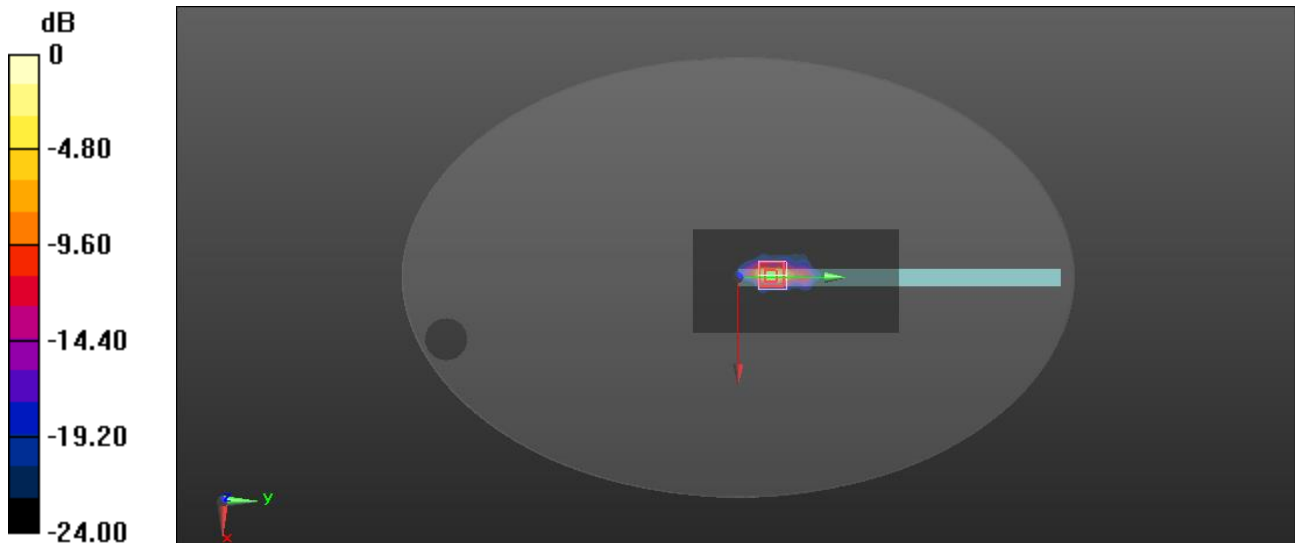
Frequency: 5210 MHz; Duty Cycle: 1:1; Room Ambient Temperature: 22.8°C; Liquid Temperature: 20.5°C
Medium parameters used: $f = 5210$ MHz; $\sigma = 4.868$ S/m; $\epsilon_r = 35.14$; $\rho = 1000$ kg/m³

DASY5 Configuration:

- Area Scan Setting: Find Secondary Maximum Within: 2.0 dB and with a peak SAR value greater than 0.0012W/kg
- Electronics: DAE4 Sn856; Calibrated: 2023/4/26
- Probe: EX3DV4 - SN3665; ConvF(5.44, 5.44, 5.44) @ 5210 MHz; Calibrated: 2023/8/18
- Sensor-Surface: 2mm (Mechanical Surface Detection)
- Phantom: ELI

Area Scan (91x181x1): Interpolated grid: dx=1.000 mm, dy=1.000 mm
Maximum value of SAR (interpolated) = 2.46 W/kg

Zoom Scan (7x7x12)/Cube 0: Measurement grid: dx=4mm, dy=4mm, dz=2mm
Reference Value = 23.60 V/m; Power Drift = 0.07 dB
Peak SAR (extrapolated) = 5.72 W/kg
SAR(1 g) = 1.01 W/kg; SAR(10 g) = 0.213 W/kg
Smallest distance from peaks to all points 3 dB below = 3.2 mm
Ratio of SAR at M2 to SAR at M1 = 51.1%
Maximum value of SAR (measured) = 2.50 W/kg



0 dB = 2.50 W/kg = 3.98 dBW/kg

WiFi 5.8GHz_Edge 4_802.11ac (VHT80)_Ch 155_0mm_Main

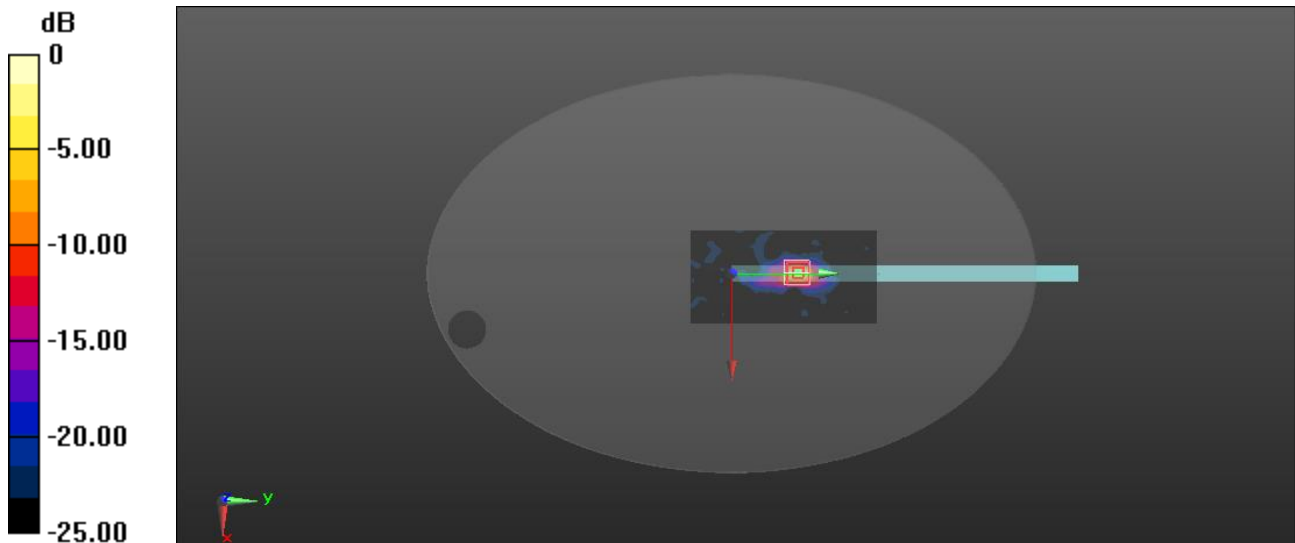
Frequency: 5775 MHz; Duty Cycle: 1:1; Room Ambient Temperature: 22.8°C; Liquid Temperature: 20.5°C
Medium parameters used : $f = 5775 \text{ MHz}$; $\sigma = 5.468 \text{ S/m}$; $\epsilon_r = 33.858$; $\rho = 1000 \text{ kg/m}^3$

DASY5 Configuration:

- Area Scan Setting: Find Secondary Maximum Within: 2.0 dB and with a peak SAR value greater than 0.0012W/kg
- Electronics: DAE4 Sn856; Calibrated: 2023/4/26
- Probe: EX3DV4 - SN3665; ConvF(5.05, 5.05, 5.05) @ 5775 MHz; Calibrated: 2023/8/18
- Sensor-Surface: 2mm (Mechanical Surface Detection)
- Phantom: ELI

Area Scan (91x181x1): Interpolated grid: $dx=1.000 \text{ mm}$, $dy=1.000 \text{ mm}$
Maximum value of SAR (interpolated) = 2.22 W/kg

Zoom Scan (7x7x12)/Cube 0: Measurement grid: $dx=4\text{mm}$, $dy=4\text{mm}$, $dz=2\text{mm}$
Reference Value = 18.51 V/m; Power Drift = 0.14 dB
Peak SAR (extrapolated) = 5.62 W/kg
SAR(1 g) = 0.919 W/kg; SAR(10 g) = 0.192 W/kg
Smallest distance from peaks to all points 3 dB below = 4 mm
Ratio of SAR at M2 to SAR at M1 = 50.1%
Maximum value of SAR (measured) = 2.30 W/kg



0 dB = 2.30 W/kg = 3.62 dBW/kg

WiFi 5.8GHz_Edge 3_802.11ac (VHT80)_Ch 155_0mm_Aux

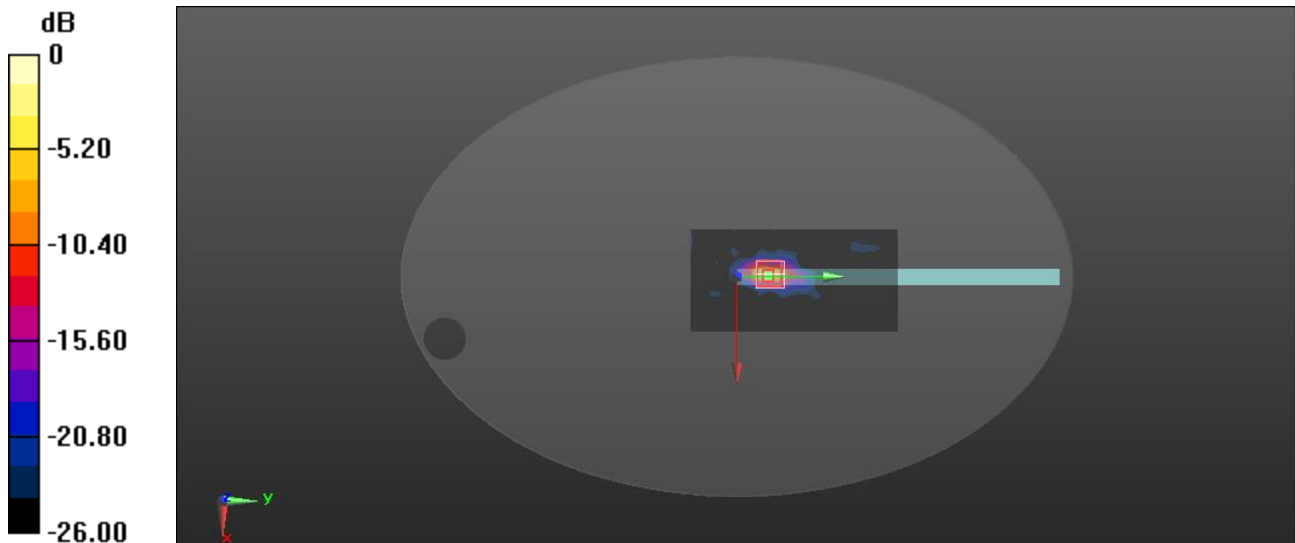
Frequency: 5775 MHz; Duty Cycle: 1:1; Room Ambient Temperature: 22.8°C; Liquid Temperature: 20.5°C
Medium parameters used : $f = 5775$ MHz; $\sigma = 5.468$ S/m; $\epsilon_r = 33.858$; $\rho = 1000$ kg/m³

DASY5 Configuration:

- Area Scan Setting: Find Secondary Maximum Within: 2.0 dB and with a peak SAR value greater than 0.0012W/kg
- Electronics: DAE4 Sn856; Calibrated: 2023/4/26
- Probe: EX3DV4 - SN3665; ConvF(5.05, 5.05, 5.05) @ 5775 MHz; Calibrated: 2023/8/18
- Sensor-Surface: 2mm (Mechanical Surface Detection)
- Phantom: ELI

Area Scan (91x181x1): Interpolated grid: dx=1.000 mm, dy=1.000 mm
Maximum value of SAR (interpolated) = 2.36 W/kg

Zoom Scan (7x7x12)/Cube 0: Measurement grid: dx=4mm, dy=4mm, dz=2mm
Reference Value = 22.31 V/m; Power Drift = -0.16 dB
Peak SAR (extrapolated) = 6.73 W/kg
SAR(1 g) = 1 W/kg; SAR(10 g) = 0.197 W/kg
Smallest distance from peaks to all points 3 dB below = 4 mm
Ratio of SAR at M2 to SAR at M1 = 46.7%
Maximum value of SAR (measured) = 2.53 W/kg



0 dB = 2.53 W/kg = 4.03 dBW/kg

WiFi 2.4GHz_Edge 4_802.11b_Ch 11_0mm_Main_Repeated one

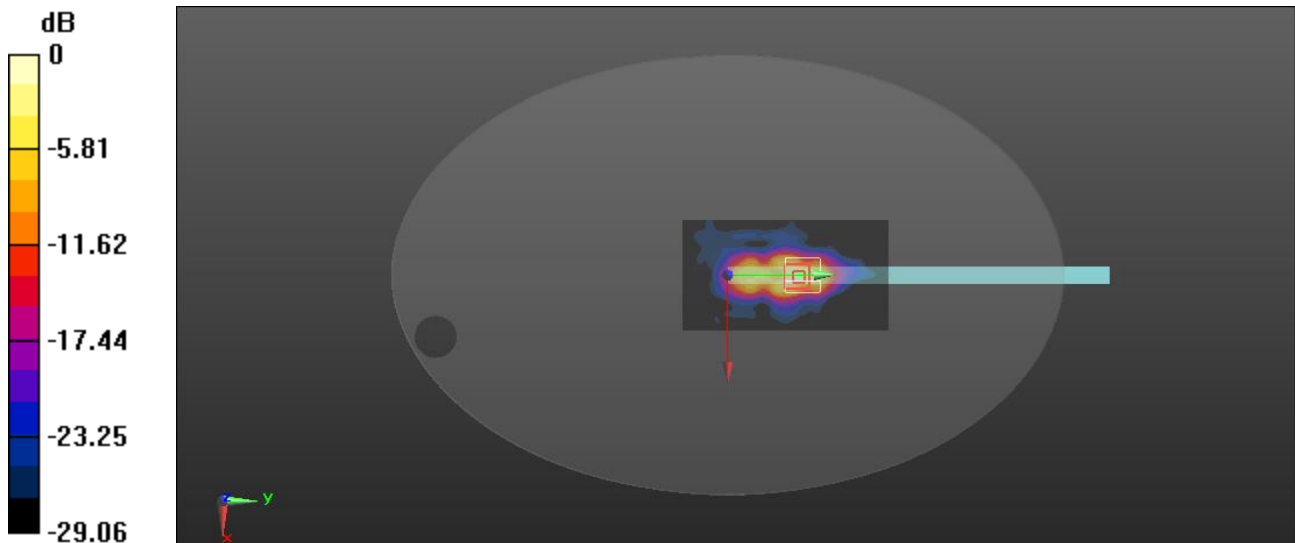
Frequency: 2462 MHz; Duty Cycle: 1:1; Room Ambient Temperature: 22.4°C; Liquid Temperature: 20.3°C
Medium parameters used : $f = 2462$ MHz; $\sigma = 1.885$ S/m; $\epsilon_r = 39.335$; $\rho = 1000$ kg/m³

DASY5 Configuration:

- Area Scan Setting: Find Secondary Maximum Within: 2.0 dB and with a peak SAR value greater than 0.0012W/kg
- Electronics: DAE4 Sn856; Calibrated: 2023/4/26
- Probe: EX3DV4 - SN3665; ConvF(7.35, 7.35, 7.35) @ 2462 MHz; Calibrated: 2023/8/18
- Sensor-Surface: 2mm (Mechanical Surface Detection)
- Phantom: ELI

Area Scan (81x151x1): Interpolated grid: dx=1.200 mm, dy=1.200 mm
Maximum value of SAR (interpolated) = 1.58 W/kg

Zoom Scan (7x7x7)/Cube 0: Measurement grid: dx=5mm, dy=5mm, dz=5mm
Reference Value = 28.81 V/m; Power Drift = -0.09 dB
Peak SAR (extrapolated) = 4.45 W/kg
SAR(1 g) = 1.14 W/kg; SAR(10 g) = 0.379 W/kg
Smallest distance from peaks to all points 3 dB below = 5 mm
Ratio of SAR at M2 to SAR at M1 = 32.2%
Maximum value of SAR (measured) = 2.15 W/kg



0 dB = 1.58 W/kg = 1.99 dBW/kg

WiFi 2.4GHz_Edge 3_802.11b_Ch 11_0mm_Aux_Repeated one

Frequency: 2462 MHz; Duty Cycle: 1:1; Room Ambient Temperature: 22.4°C; Liquid Temperature: 20.3°C
Medium parameters used : $f = 2462$ MHz; $\sigma = 1.885$ S/m; $\epsilon_r = 39.335$; $\rho = 1000$ kg/m³

DASY5 Configuration:

- Area Scan Setting: Find Secondary Maximum Within: 2.0 dB and with a peak SAR value greater than 0.0012W/kg
- Electronics: DAE4 Sn856; Calibrated: 2023/4/26
- Probe: EX3DV4 - SN3665; ConvF(7.35, 7.35, 7.35) @ 2462 MHz; Calibrated: 2023/8/18
- Sensor-Surface: 2mm (Mechanical Surface Detection)
- Phantom: ELI

Area Scan (81x151x1): Interpolated grid: dx=1.200 mm, dy=1.200 mm
Maximum value of SAR (interpolated) = 2.28 W/kg

Zoom Scan (7x7x7)/Cube 0: Measurement grid: dx=5mm, dy=5mm, dz=5mm

Reference Value = 34.50 V/m; Power Drift = 0.04 dB

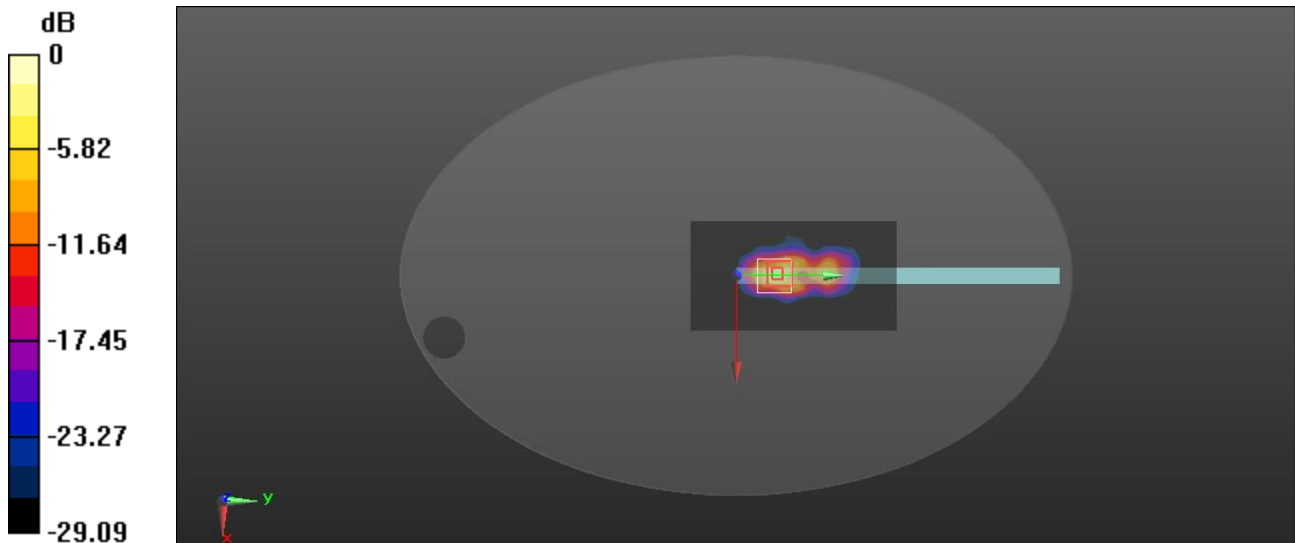
Peak SAR (extrapolated) = 4.26 W/kg

SAR(1 g) = 1.17 W/kg; SAR(10 g) = 0.379 W/kg

Smallest distance from peaks to all points 3 dB below = 4.5 mm

Ratio of SAR at M2 to SAR at M1 = 33.3%

Maximum value of SAR (measured) = 2.41 W/kg



0 dB = 2.41 W/kg = 3.82 dBW/kg

WiFi 5.2GHz_Edge 4_802.11ac (VHT80)_Ch 42_0mm_Main_Repeated one

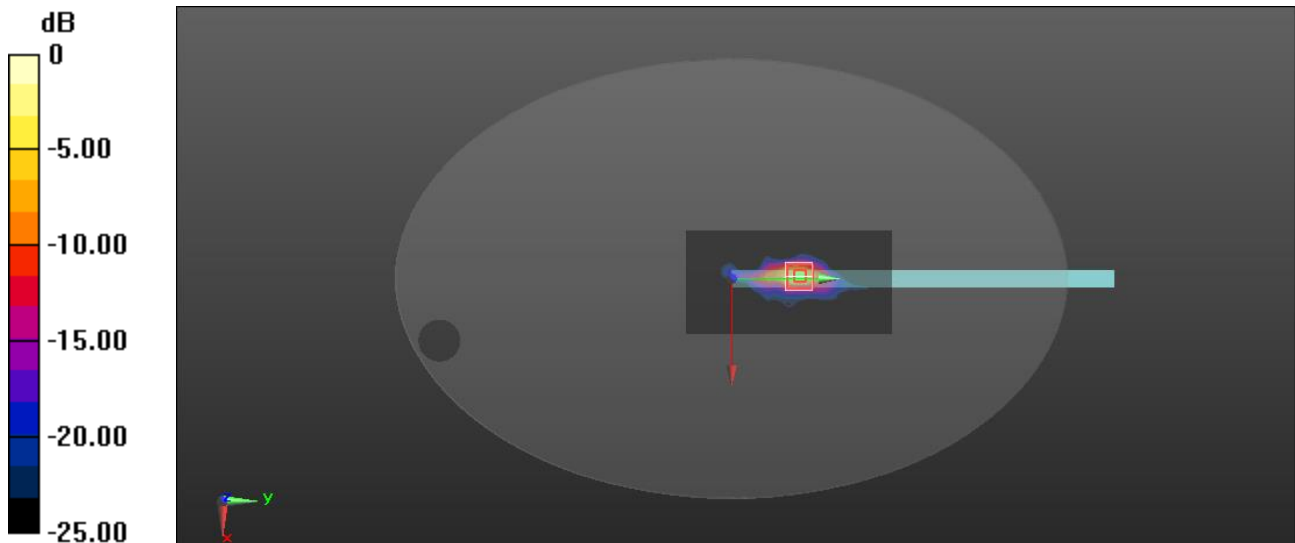
Frequency: 5210 MHz; Duty Cycle: 1:1; Room Ambient Temperature: 22.8°C; Liquid Temperature: 20.5°C
Medium parameters used: $f = 5210$ MHz; $\sigma = 4.868$ S/m; $\epsilon_r = 35.14$; $\rho = 1000$ kg/m³

DASY5 Configuration:

- Area Scan Setting: Find Secondary Maximum Within: 2.0 dB and with a peak SAR value greater than 0.0012W/kg
- Electronics: DAE4 Sn856; Calibrated: 2023/4/26
- Probe: EX3DV4 - SN3665; ConvF(5.44, 5.44, 5.44) @ 5210 MHz; Calibrated: 2023/8/18
- Sensor-Surface: 2mm (Mechanical Surface Detection)
- Phantom: ELI

Area Scan (91x181x1): Interpolated grid: dx=1.000 mm, dy=1.000 mm
Maximum value of SAR (interpolated) = 2.12 W/kg

Zoom Scan (7x7x12)/Cube 0: Measurement grid: dx=4mm, dy=4mm, dz=2mm
Reference Value = 21.40 V/m; Power Drift = -0.19 dB
Peak SAR (extrapolated) = 4.85 W/kg
SAR(1 g) = 0.927 W/kg; SAR(10 g) = 0.211 W/kg
Smallest distance from peaks to all points 3 dB below = 4 mm
Ratio of SAR at M2 to SAR at M1 = 55.4%
Maximum value of SAR (measured) = 2.10 W/kg



0 dB = 2.10 W/kg = 3.22 dBW/kg

WiFi 5.2GHz_Edge 3_802.11ac (VHT80)_Ch 42_0mm_Aux_Repeated one

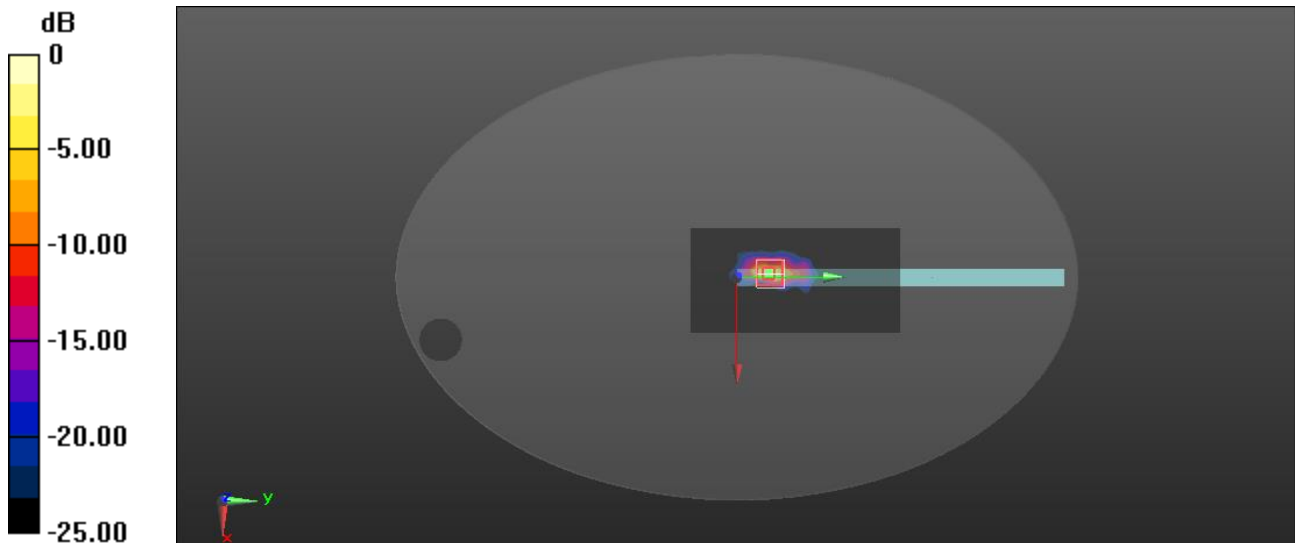
Frequency: 5210 MHz; Duty Cycle: 1:1; Room Ambient Temperature: 22.8°C; Liquid Temperature: 20.5°C
Medium parameters used: $f = 5210$ MHz; $\sigma = 4.868$ S/m; $\epsilon_r = 35.14$; $\rho = 1000$ kg/m³

DASY5 Configuration:

- Area Scan Setting: Find Secondary Maximum Within: 2.0 dB and with a peak SAR value greater than 0.0012W/kg
- Electronics: DAE4 Sn856; Calibrated: 2023/4/26
- Probe: EX3DV4 - SN3665; ConvF(5.44, 5.44, 5.44) @ 5210 MHz; Calibrated: 2023/8/18
- Sensor-Surface: 2mm (Mechanical Surface Detection)
- Phantom: ELI

Area Scan (91x181x1): Interpolated grid: dx=1.000 mm, dy=1.000 mm
Maximum value of SAR (interpolated) = 2.53 W/kg

Zoom Scan (7x7x12)/Cube 0: Measurement grid: dx=4mm, dy=4mm, dz=2mm
Reference Value = 23.60 V/m; Power Drift = 0.07 dB
Peak SAR (extrapolated) = 5.42 W/kg
SAR(1 g) = 0.973 W/kg; SAR(10 g) = 0.208 W/kg
Smallest distance from peaks to all points 3 dB below = 4 mm
Ratio of SAR at M2 to SAR at M1 = 51.8%
Maximum value of SAR (measured) = 2.50 W/kg



0 dB = 2.50 W/kg = 3.98 dBW/kg

WiFi 5.8GHz_Edge 4_802.11ac (VHT80)_Ch 155_0mm_Main_Repeated one

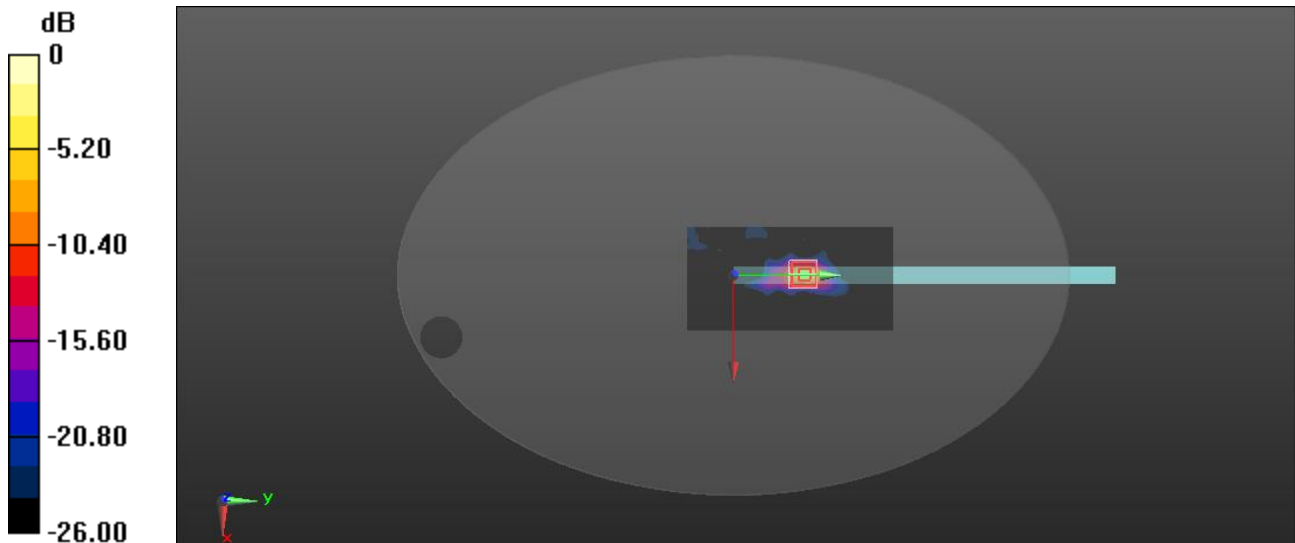
Frequency: 5775 MHz; Duty Cycle: 1:1; Room Ambient Temperature: 22.8°C; Liquid Temperature: 20.5°C
Medium parameters used : $f = 5775$ MHz; $\sigma = 5.468$ S/m; $\epsilon_r = 33.858$; $\rho = 1000$ kg/m³

DASY5 Configuration:

- Area Scan Setting: Find Secondary Maximum Within: 2.0 dB and with a peak SAR value greater than 0.0012W/kg
- Electronics: DAE4 Sn856; Calibrated: 2023/4/26
- Probe: EX3DV4 - SN3665; ConvF(5.05, 5.05, 5.05) @ 5775 MHz; Calibrated: 2023/8/18
- Sensor-Surface: 2mm (Mechanical Surface Detection)
- Phantom: ELI

Area Scan (91x181x1): Interpolated grid: dx=1.000 mm, dy=1.000 mm
Maximum value of SAR (interpolated) = 2.33 W/kg

Zoom Scan (7x7x12)/Cube 0: Measurement grid: dx=4mm, dy=4mm, dz=2mm
Reference Value = 21.69 V/m; Power Drift = 0.05 dB
Peak SAR (extrapolated) = 5.61 W/kg
SAR(1 g) = 0.943 W/kg; SAR(10 g) = 0.196 W/kg
Smallest distance from peaks to all points 3 dB below = 4 mm
Ratio of SAR at M2 to SAR at M1 = 51%
Maximum value of SAR (measured) = 2.36 W/kg



0 dB = 2.33 W/kg = 3.67 dBW/kg

WiFi 5.8GHz_Edge 3_802.11ac (VHT80)_Ch 155_0mm_Aux_Repeated one

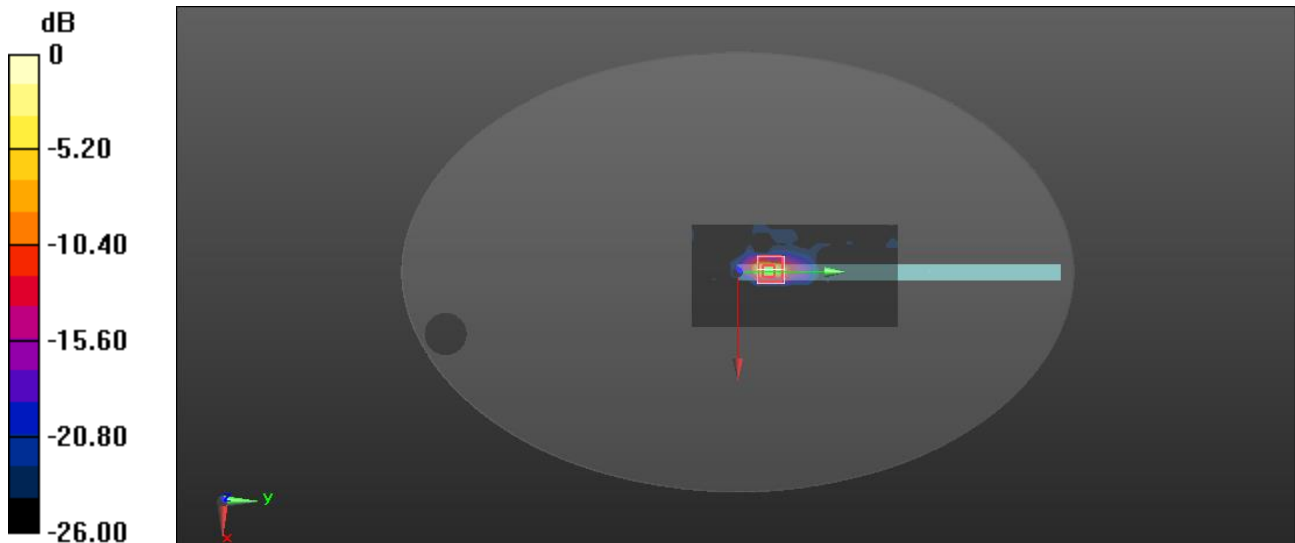
Frequency: 5775 MHz; Duty Cycle: 1:1; Room Ambient Temperature: 22.8°C; Liquid Temperature: 20.5°C
Medium parameters used : $f = 5775$ MHz; $\sigma = 5.468$ S/m; $\epsilon_r = 33.858$; $\rho = 1000$ kg/m³

DASY5 Configuration:

- Area Scan Setting: Find Secondary Maximum Within: 2.0 dB and with a peak SAR value greater than 0.0012W/kg
- Electronics: DAE4 Sn856; Calibrated: 2023/4/26
- Probe: EX3DV4 - SN3665; ConvF(5.05, 5.05, 5.05) @ 5775 MHz; Calibrated: 2023/8/18
- Sensor-Surface: 2mm (Mechanical Surface Detection)
- Phantom: ELI

Area Scan (91x181x1): Interpolated grid: dx=1.000 mm, dy=1.000 mm
Maximum value of SAR (interpolated) = 2.49 W/kg

Zoom Scan (7x7x12)/Cube 0: Measurement grid: dx=4mm, dy=4mm, dz=2mm
Reference Value = 22.37 V/m; Power Drift = -0.18 dB
Peak SAR (extrapolated) = 6.69 W/kg
SAR(1 g) = 1.01 W/kg; SAR(10 g) = 0.197 W/kg
Smallest distance from peaks to all points 3 dB below = 4 mm
Ratio of SAR at M2 to SAR at M1 = 46.3%
Maximum value of SAR (measured) = 2.54 W/kg



0 dB = 2.54 W/kg = 4.05 dBW/kg