

802.11ac WIFI Dongle

User Manual

Chapter 1: Product Information

1-1 Introduction

Thank you for purchasing jjPlus WMI6201 802.11ac wifi dongle, data transfer rates is 867Mbps.

With USB 2.0 interface - a very common expansion port of computers - plug this wireless network dongle into any empty USB port of your computer, easy to use!

Main Features

- 802.11bgn
- 802.11ac
- Antenna 2x2 for 2T2R
- Support USB 2.0
- Support 64/128-bit WEP, WPA (TKIP with IEEE 802.1x), WPA2 (AES with IEEE 802.1x)
- Supports operating system: Windows XP/Vista/7/8/8.1/10, and Linux

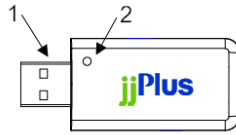
1-2 System Requirements

- CPU : Pentium III 1G above or similar
- Memory size : 256MB RAM
- Hard Disk : At least 100MB available space
- One available USB 2.0 port
- Operation System : Windows
XP/Vista/7/8/8.1/10 and Linux

1-3 Package Contents

- Wireless USB Dongle x1
- Quick Installation Guide x1

1-4 Appearance



1	USB Connector
2	Link/Activity LED

Chapter 2: Driver Install for Windows

2-1 Driver Download

[WiFi]:

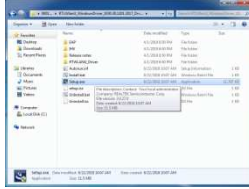
http://www.jjplus.com/dl/wmu6204/RTLWlanU_WindowsDriver_1030.30.1201.zip

[Bluetooth]:

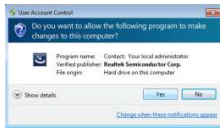
http://www.jjplus.com/dl/wmu6204/RTBlueR_Windows_887.905.0115.zip

2-2 Install WiFi Driver

- a. Click Setup.exe to install WiFi Driver



- b. From "User Account Control", click "Yes".

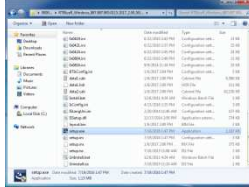


c. Install finished, please restart computer.

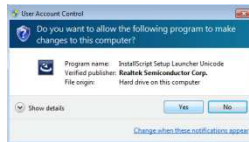


2-3 Install Bluetooth Driver

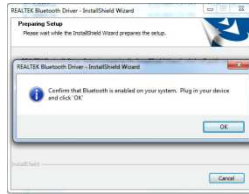
a. Click Setup.exe to install Bluetooth Driver



b. From “User Account Control”, click “Yes”



c. Install finished insert device, then type OK



d. Install finished, please restart computer



Chapter 3: Driver Install for Linux & Android

Please contact: wifi_support@jjplus.com

**Federal
Communication
Commission
Interference
Statement**

This device complies with Part 15 of the FCC Rules. Operation is subject to the following two

conditions: (1) This device may not cause harmful interference, and (2) this device must accept any interference received, including interference that may cause undesired operation.

This equipment has been tested and found to comply with the limits for a Class B digital device, pursuant to Part 15 of the FCC Rules. These limits are designed to provide reasonable protection against harmful

interference in a residential installation. This equipment generates, uses and can radiate radio frequency energy and, if not installed and used in accordance with the instructions, may cause harmful interference to radio communications. However, there is no guarantee that interference will not occur in a particular installation. If this equipment does cause harmful interference to radio or

television reception, which can be determined by turning the equipment off and on, the user is encouraged to try to correct the interference by one of the following measures:

- Reorient or relocate the receiving antenna.
- Increase the separation between the equipment and receiver.
- Connect the equipment into an outlet on a circuit

different from that
to which the receiver is
connected.

- Consult the dealer or an
experienced radio/TV
technician for help.

FCC Caution:

- Any changes or
modifications not
expressly approved by the
party responsible for
compliance could void the
user's authority to operate

this equipment.

- This transmitter must not be co-located or operating in conjunction with any other antenna or transmitter.

Radiation Exposure Statement:

The product comply with the FCC portable RF exposure limit set forth for an uncontrolled environment and are safe for intended operation as described in this manual. The

further RF exposure reduction can be achieved if the product can be kept as far as possible from the user body or set the device to lower output power if such function is available.

**FOR COUNTRY CODE
SELECTION USAGE (WLAN
DEVICES)**

Note: The country code selection is for non-US model only and is not available to all US model. Per FCC regulation, all WiFi product marketed in US must fixed to US operation channels only.

