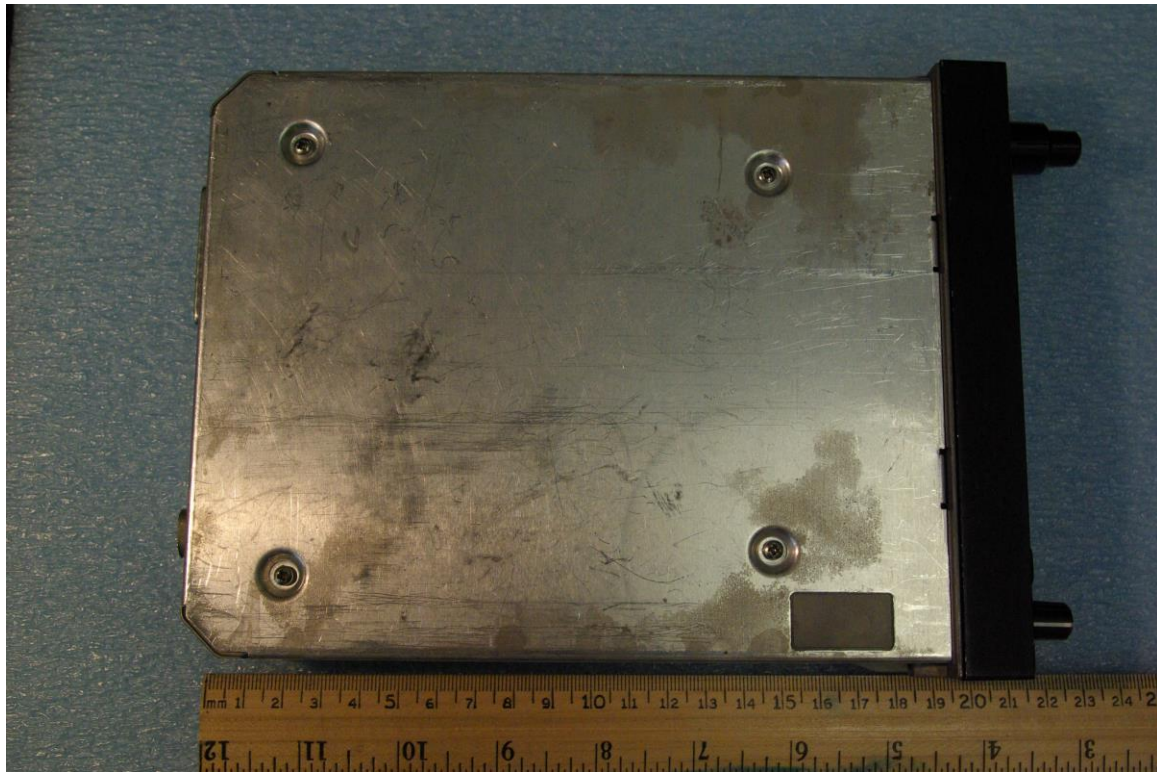
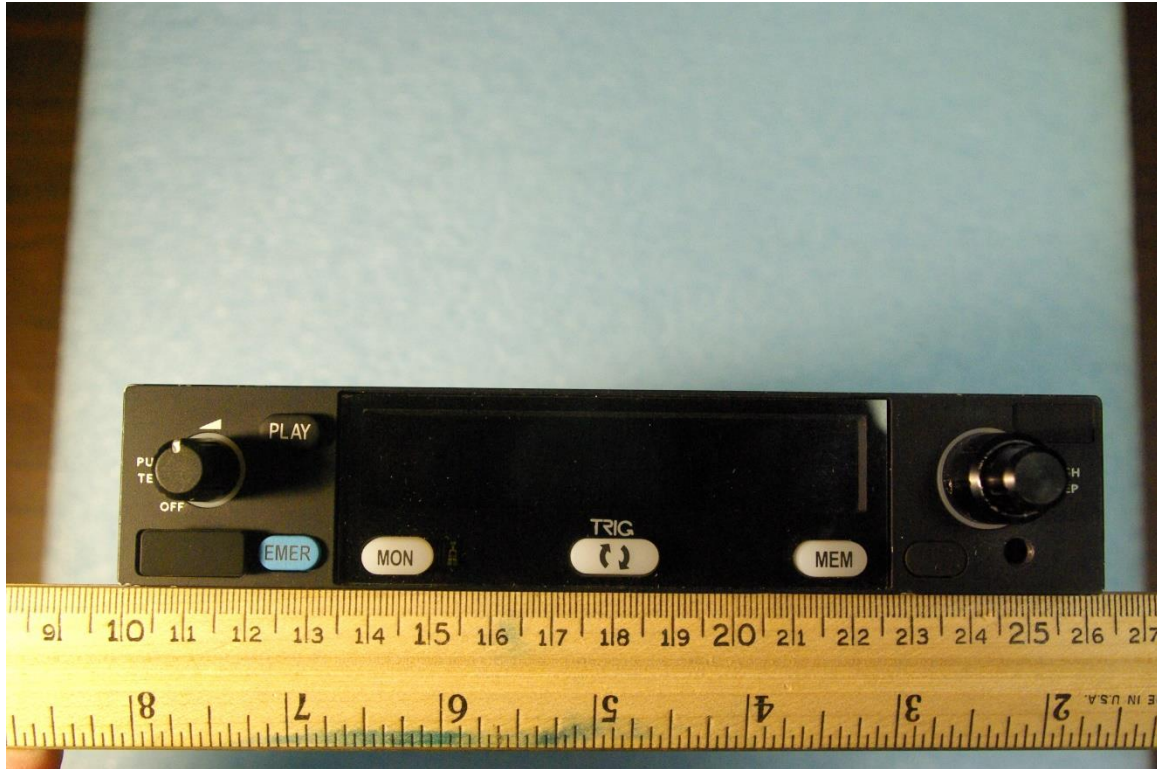


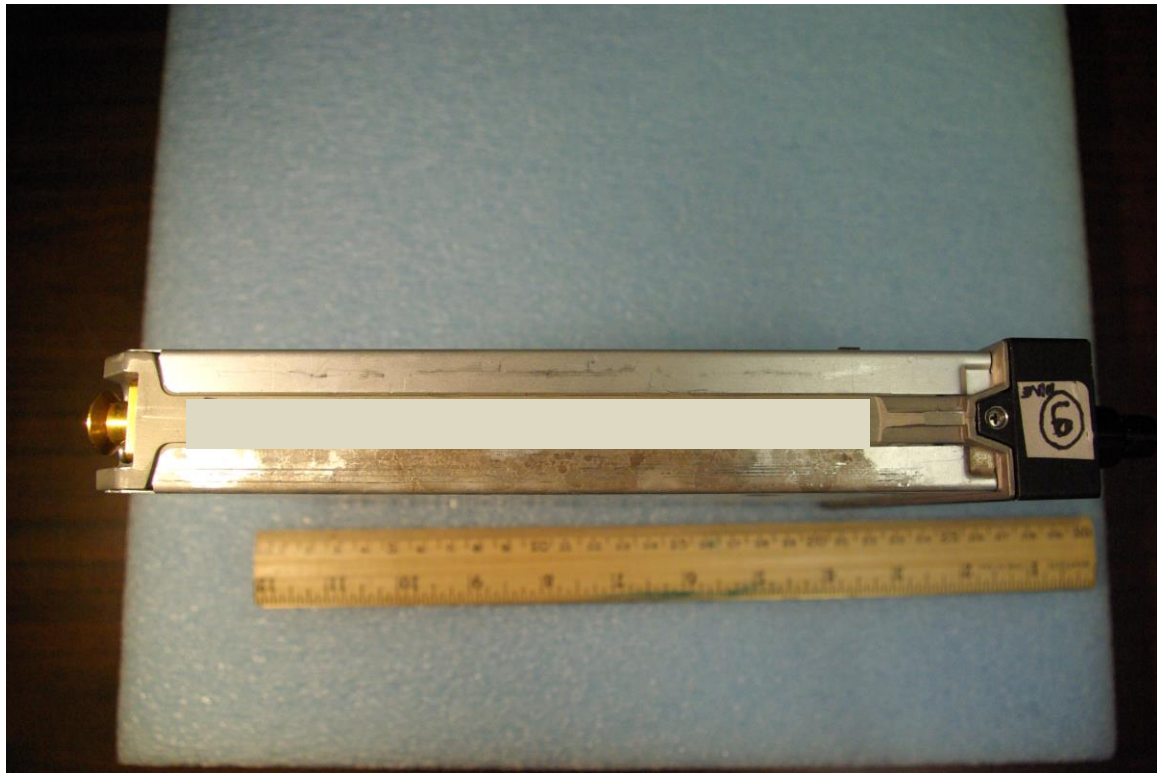
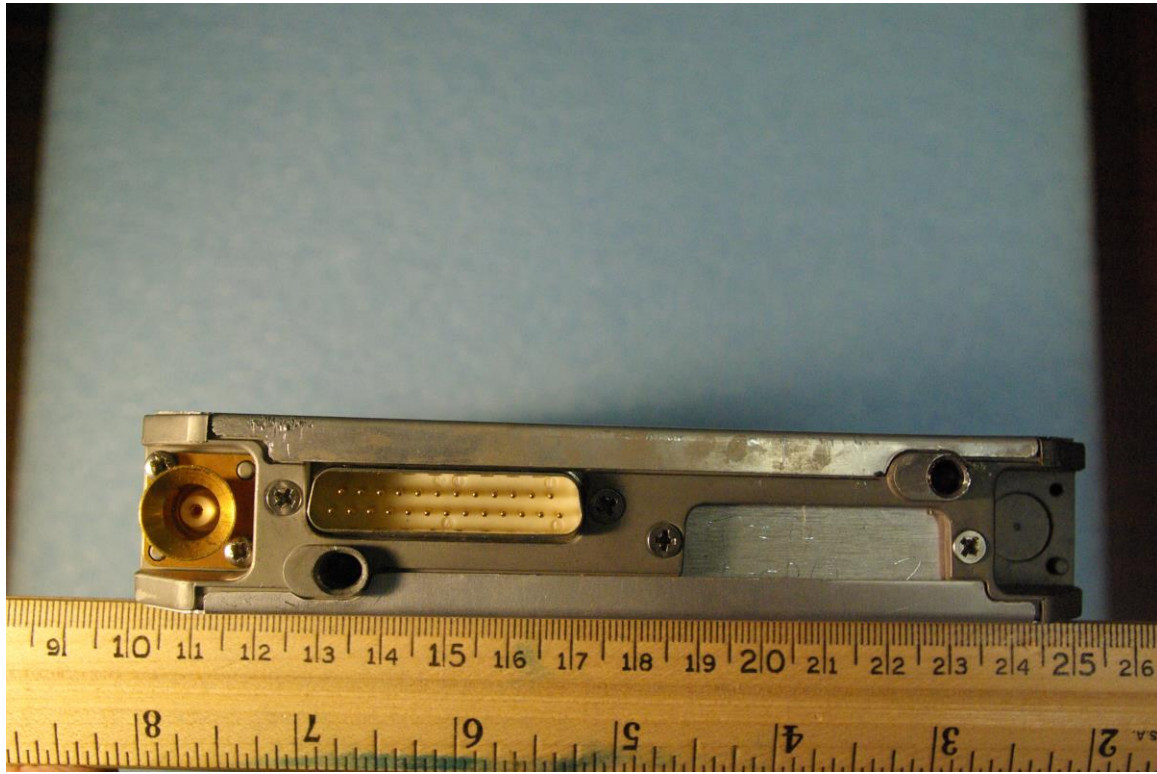
External photographs of equipment under test



Rogers Labs, Inc.
4405 W. 259th Terrace
Louisburg, KS 66053
Phone/Fax: (913) 837-3214
Revision 1

Trig Avionics Limited
Models: TX56, TX56A, TX57, TX57A
Test #: 180417
Test to: CFR47 Parts 2, 87 and RSS-141
File: VZI01578 ExtPho

FCC: VZI01578
IC: 10614A-01578
Date: April 17, 2019
Page 1 of 3



Rogers Labs, Inc.
4405 W. 259th Terrace
Louisburg, KS 66053
Phone/Fax: (913) 837-3214
Revision 1

Trig Avionics Limited
Models: TX56, TX56A, TX57, TX57A
Test #: 180417
Test to: CFR47 Parts 2, 87 and RSS-141
File: VZI01578 ExtPho

FCC: VZI01578
IC: 10614A-01578
Date: April 17, 2019
Page 2 of 3



Rogers Labs, Inc.
4405 W. 259th Terrace
Louisburg, KS 66053
Phone/Fax: (913) 837-3214
Revision 1

Trig Avionics Limited
Models: TX56, TX56A, TX57, TX57A
Test #: 180417
Test to: CFR47 Parts 2, 87 and RSS-141
File: VZI01578 ExtPho

FCC: VZI01578
IC: 10614A-01578
Date: April 17, 2019
Page 3 of 3