



Suga Electronics Limited

802.11b/g/n (2T2R) WLAN AP/Router Module

User Manual

Model: SWP23MA-0, SWP23MA-1

Version: 1.0

Sep 2012

Contents

1.1 FCC Caution.....	2
1.2 FCC Radiation Exposure Statement.....	2
2.1 Module Connection And Booting up.....	3
2.2 Operation Mode Configuration.....	4
2.3 Local Area Network (LAN) Settings.....	5
2.4 Basic Wireless Settings.....	6
2.5 Advanced Wireless Settings.....	7
2.6 Wireless Security/Encryption Settings.....	8
2.7 Station List.....	9
2.8 Disclaimer.....	9



Suga Electronics Limited

1.1 FCC Caution:

Any Changes or modifications not expressly approved by the party responsible for compliance could void the user's authority to operate the equipment.

This device complies with part 15 of the FCC Rules. Operation is subject to the following two conditions: (1) This device may not cause harmful interference, and (2) this device must accept any interference received, including interference that may cause undesired operation.

IMPORTANT NOTE:

1.2 FCC Radiation Exposure Statement:

This equipment complies with FCC radiation exposure limits set forth for an uncontrolled environment. This equipment should be installed and operated with minimum distance 20cm between the radiator & your body.

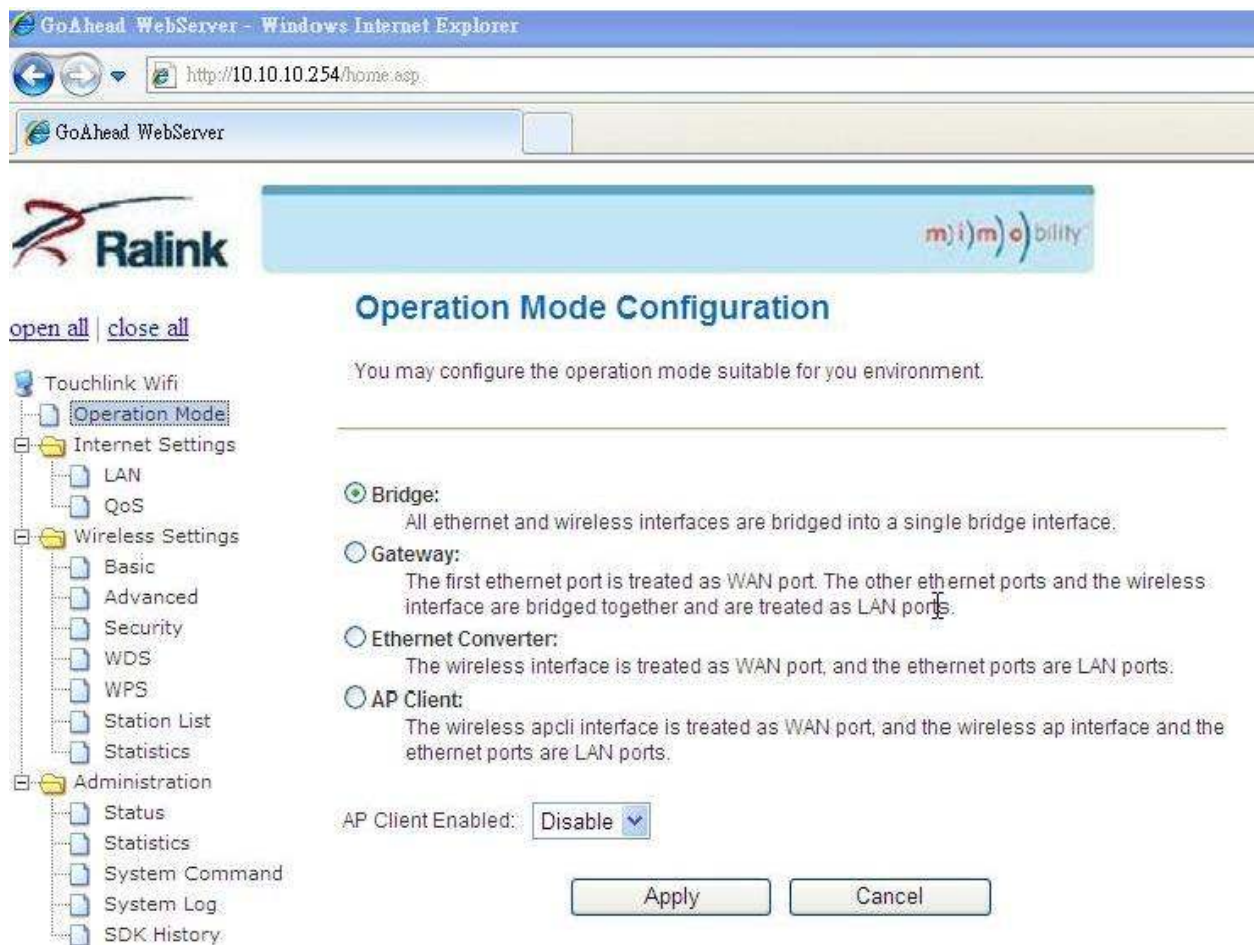
This transmitter must not be co-located or operating in conjunction with any other antenna or transmitter.



Suga Electronics Limited

2.1 Module Connection And Booting up

Connect the power adapter to two 2x 8pin-2.0mm pitch connectors to power up the module, Connect the Ethernet port to the PC, then enter <http://10.10.10.254> into Internet Explorer to open the AP/router home page. As below:





2.2 Operation Mode Configuration

Select “Operation Mode” to configure the operation mode to fit your environment, in this menu, there are four options, please follow the description to choose the option you needed. If you want the SWP23MA module to act as an AP and Client, you should select “AP Client” mode and “enable” then click “Apply”.

The screenshot shows a web-based configuration interface for a device. On the left is a sidebar menu with a tree structure. The main content area is titled "Operation Mode Configuration" and contains instructions, four radio button options, a dropdown menu, and two buttons.

[open all](#) | [close all](#)

- Touchlink Wifi
 - Operation Mode**
 - Internet Settings
 - LAN
 - QoS
 - Wireless Settings
 - Basic
 - Advanced
 - Security
 - WDS
 - WPS
 - Station List
 - Statistics
 - Administration
 - Status
 - Statistics
 - System Command
 - System Log
 - SDK History

Operation Mode Configuration

You may configure the operation mode suitable for your environment.

- ☒ **Bridge:**
All ethernet and wireless interfaces are bridged into a single bridge interface.
- ☐ **Gateway:**
The first ethernet port is treated as WAN port. The other ethernet ports and the wireless interface are bridged together and are treated as LAN ports.
- ☐ **Ethernet Converter:**
The wireless interface is treated as WAN port, and the ethernet ports are LAN ports.
- ☐ **AP Client:**
The wireless apcli interface is treated as WAN port, and the wireless ap interface and the ethernet ports are LAN ports.

AP Client Enabled: Disable ▾

Apply Cancel



2.3 Local Area Network(LAN) Settings

Select “LAN” option to set your home page IP, subnet mask, default gateway etc. the default IP is 10.10.10.254.

[open all](#) | [close all](#)

- Touchlink Wifi
 - Operation Mode
- Internet Settings
 - LAN**
 - QoS
- Wireless Settings
 - Basic
 - Advanced
 - Security
 - WDS
 - WPS
 - Station List
 - Statistics
- Administration
 - Status
 - Statistics
 - System Command
 - System Log
 - SDK History

Local Area Network (LAN) Settings

You may enable/disable networking functions and configure their parameters as your wish.

LAN Setup	
IP Address	10.10.10.254
Subnet Mask	255.255.255.0
LAN 2	<input type="radio"/> Enable <input checked="" type="radio"/> Disable
LAN2 IP Address	
LAN2 Subnet Mask	
Default Gateway	10.10.10.253
Primary DNS Server	8.8.8.8
Secondary DNS Server	168.95.1.1
MAC Address	00:25:F0:B0:34:56
DHCP Type	Disable ▾
802.1d Spanning Tree	Disable ▾
LLTD	Disable ▾



2.4 Basic Wireless Settings

You could configure the minimum number of Wireless settings for communication, such as Network Name (SSID), Network Mode (802.11b/g/n) and Channel. The Access Point can be set simply with only the minimum setting items.

[open all](#) | [close all](#)

- Touchlink Wifi
 - Operation Mode
 - Internet Settings
 - LAN
 - QoS
 - Wireless Settings
 - Basic**
 - Advanced
 - Security
 - WDS
 - WPS
 - Station List
 - Statistics
 - Administration
 - Status
 - Statistics
 - System Command
 - System Log
 - SDK History

Wireless Network	
Driver Version	2.6.0.1
Radio On/Off	<input type="button" value="RADIO OFF"/>
WiFi On/Off	<input type="button" value="WiFi OFF"/>
Network Mode	11b/g/n mixed mode ▾
Network Name(SSID)	<input type="text" value="SUGA AP"/> Hidden <input type="checkbox"/> Isolated <input type="checkbox"/>
Broadcast Network Name (SSID)	<input checked="" type="radio"/> Enable <input type="radio"/> Disable
AP Isolation	<input type="radio"/> Enable <input checked="" type="radio"/> Disable
BSSID	00:25:F0:B0:34:56
Frequency (Channel)	2412MHz (Channel 1) ▾
HT Physical Mode	
Operating Mode	<input checked="" type="radio"/> Mixed Mode <input type="radio"/> Green Field
Channel BandWidth	<input type="radio"/> 20 <input checked="" type="radio"/> 20/40
Guard Interval	<input type="radio"/> Long <input checked="" type="radio"/> Auto

2.5 Advanced Wireless Settings

Use the Advanced Setup page to make detailed settings for the Wireless. Advanced Setup includes items that are not available from the Basic Setup page, such as Beacon Interval, Control Tx Rates and Basic Data Rates.

[open all](#) | [close all](#)

- Touchlink Wifi
 - Operation Mode
 - Internet Settings
 - LAN
 - QoS
 - Wireless Settings
 - Basic
 - Advanced**
 - Security
 - WDS
 - WPS
 - Station List
 - Statistics
 - Administration
 - Status
 - Statistics
 - System Command
 - System Log
 - SDK History

Advanced Wireless	
BG Protection Mode	Auto
Beacon Interval	100 ms (range 20 - 999, default 100)
Data Beacon Rate (DTIM)	1 ms (range 1 - 255, default 1)
Fragment Threshold	2346 (range 256 - 2346, default 2346)
RTS Threshold	2347 (range 1 - 2347, default 2347)
TX Power	100 (range 1 - 100, default 100)
Short Preamble	<input checked="" type="radio"/> Enable <input type="radio"/> Disable
Short Slot	<input checked="" type="radio"/> Enable <input type="radio"/> Disable
Tx Burst	<input checked="" type="radio"/> Enable <input type="radio"/> Disable
Pkt_Aggregate	<input checked="" type="radio"/> Enable <input type="radio"/> Disable
IEEE 802.11H Support	<input type="radio"/> Enable <input checked="" type="radio"/> Disable (only in A band)
Country Code	US (United States)

Wi-Fi Multimedia	
WMM Capable	<input checked="" type="radio"/> Enable <input type="radio"/> Disable
APSD Capable	<input type="radio"/> Enable <input checked="" type="radio"/> Disable
DLS Capable	<input type="radio"/> Enable <input checked="" type="radio"/> Disable
WMM Parameters	WMM Configuration

Multicast-to-Unicast Converter	
Multicast-to-Unicast	<input type="radio"/> Enable <input checked="" type="radio"/> Disable

2.6 Wireless Security/Encryption Settings

Setup the wireless security and encryption to prevent from unauthorized access and monitoring.

[open all](#) | [close all](#)

- Touchlink Wifi
 - Operation Mode
 - Internet Settings
 - LAN
 - QoS
 - Wireless Settings
 - Basic
 - Advanced
 - Security**
 - WDS
 - WPS
 - Station List
 - Statistics
 - Administration
 - Status
 - Statistics
 - System Command
 - System Log
 - SDK History

Select SSID	
SSID choice:	SUGA AP
"2gigTouchlink"	
Security Mode	WPA2-PSK
WPA	
WPA Algorithms	<input type="radio"/> TKIP <input checked="" type="radio"/> AES <input type="radio"/> TKIPAES
Pass Phrase	i1LymLH1mT2lwiKlxHKHfumGFUS
Key Renewal Interval	3600 seconds (0 ~ 4194303)
Access Policy	
Policy	Disable
Add a station Mac:	

Apply Cancel



Suga Electronics Limited

2.7 Station List

You could monitor stations which associated to this AP here.

[open all](#) | [close all](#)



Wireless Network							
MAC Address	Aid	PSM	MimoPS	MCS	BW	SGI	STBC
00:26:C7:57:EE:FE	1	1	1	4	20M	0	0

2.8 Disclaimer

Suga Electronics Limited assumes no responsibility for errors or omissions in the materials available on this Document.

THESE MATERIALS AND INFORMATION ARE PROVIDED “AS IS” WITHOUT WARRANTY OF ANY KIND, EITHER EXPRESS OR IMPLIED , INCLUDING BUT NOT LIMITED TO, THE IMPLIED WARRANTIES OF MERCHANTABILITY, FITNESS FOR A PARTICULAR PURPOSE, OR NON-INFRINGEMENT.

SugaE uses reasonable efforts to include accurate and up-to-date information on this Document; it does not, however, make any representations as to its accuracy or completeness of the information, text, graphics, links or other items contained within these materials. Your use of this Document is at your own responsibility. SugaE, its suppliers, and other parties involved in creating and delivering this Document’s contents shall not be liable for any special, indirect, incidental, or consequential damages, including without limitation, lost revenues or lost profits.