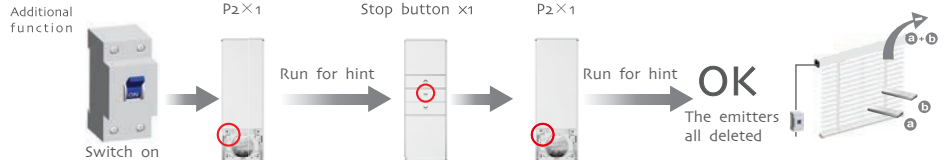
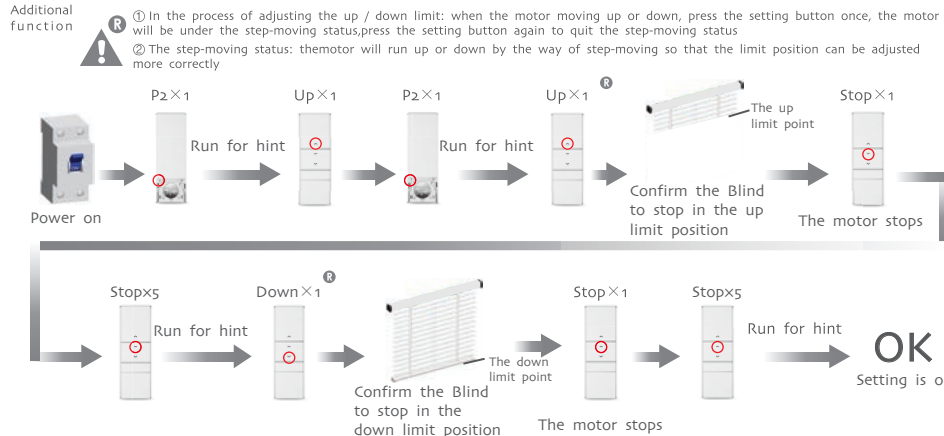


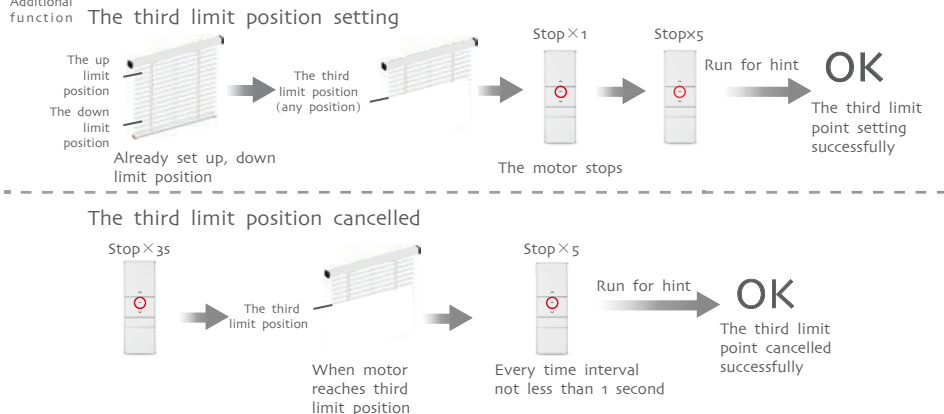
A Delete emitter



A Set up / down limit position



A The third limit position setting



A Delete limit



DV24CE

Blind Motor Specification

Version NO.: A/02

T Technical support

Technical support

DV24CE input voltage 12V
 Motor output power : 6W
 One motor maximum can store 20 channels, over 20 channels, if still need add new emitters, it will be repeating covered last channel.

① Please set the limit position before use.
 ② When in the group control mode, the setting up, deleting programme, setting limit are unworkable.
 ③ The motor change the direction need to set limit point again;

T Control range

Technical support

Effective transmitting distance may have deviation due to actual environment

	L1 open	L2 partition	Emission frequency
12V	200m	35m	433.92/868 MHz

T Matchable emitter

Technical support

For the emitters without setting button like DC1650, you can press up button and stop button at the same time to work as the same function as setting button.

DC305A Single-channel emitter
 DC306A 5-channel emitter
 DC313A 15-channel emitter
 DC1650 Single-channel emitter
 DC1651 Double-channel emitter
 DC1600 Single-channel emitter
 DC1602 15-channel emitter
 DC287 Single-channel emitter
 DC288 5-channel emitter
 DC289 15-channel emitter
 DC262 15-channel emitter
 DC316A Portable double-channel emitter
 DC476A Portable 9-channel emitter
 DC1653 15-channel LCD emitter

T Button specification

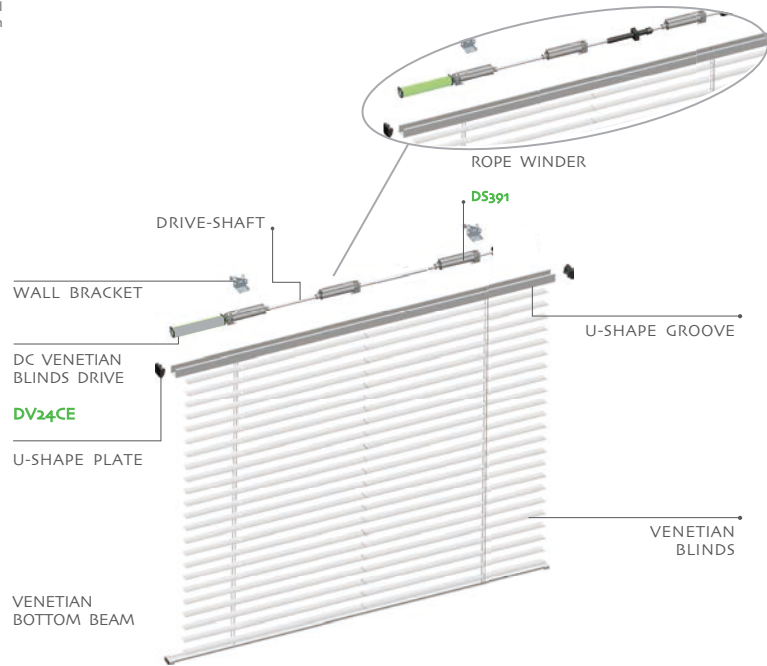
Technical support

E: Electronic Electronic limit + Built-in receiver

Power connector
 The program button
 Up Stop Down
 Setting button (P2)

A Installation of the motor

Additional function



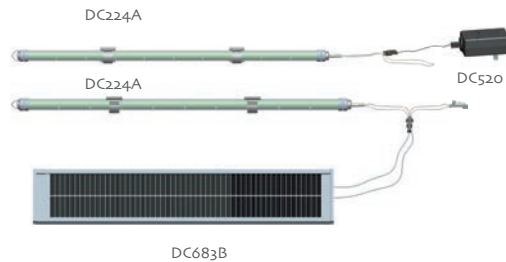
A Rechargeable Description

Additional function



①DV24DE can be charged by the charger DC212 or the motor can get the power from the 12V battery pole; We have two types of battery pole, they are DC224 and DC224A (rechargeable)
②DC224A is rechargeable by solar panel DC683B or charger DC520.

12V Battery Pole (DC224(A))

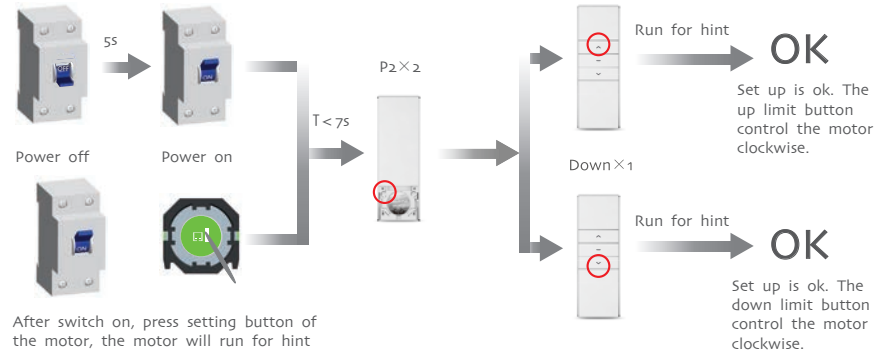


A Setting up

Additional function

During the settings, the time between two operation must be shorter than 4s, otherwise it will quit the setting

⚠ If the motor already experienced match code, the memory will be cleared if do it again

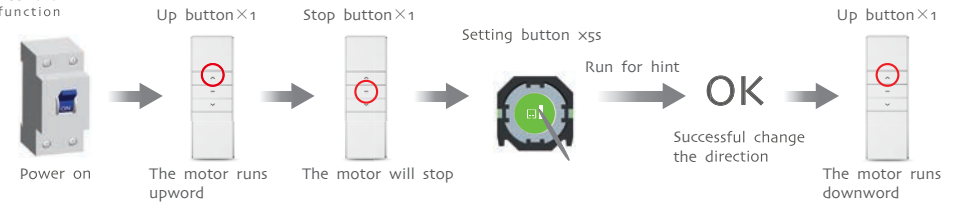


After switch on, press setting button of the motor, the motor will run for hint

A The reverse of direction setting

Additional function

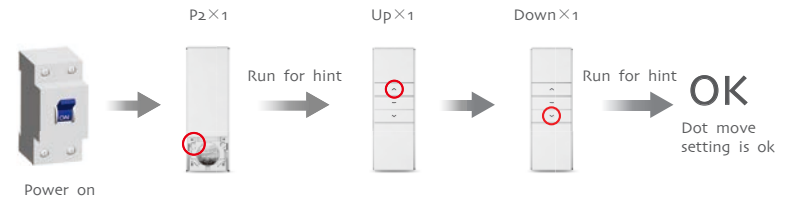
⚠ Repeat the reverse of direction setting operation, the direction of motor can be reverted in a loop



A Dot-move setting

Additional function

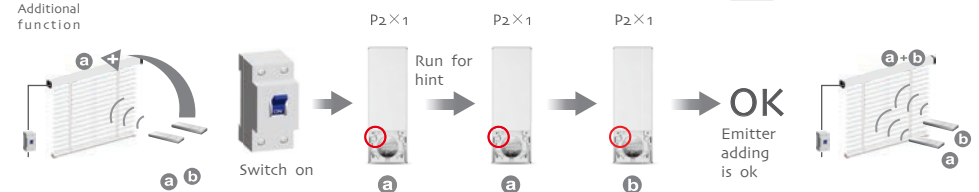
⚠ Repeat setting, function is cancelled



A Add Emitter

Additional function

⚠ Emitter a is the one already matched code, while emitter b has not



Warning:

This device complies with Industry Canada RSS-210. Operation is subject to the following two conditions: (1) this device may not cause interference, and (2) this device must accept any interference, including interference that may cause undesired operation of the device.

Le présent appareil est conforme aux CNR d'Industrie Canada applicables aux appareils radio RSS-210. L'exploitation est autorisée aux deux conditions suivantes :

- (1) l'appareil ne doit pas produire de brouillage, et
- (2) l'utilisateur de l'appareil doit accepter tout brouillage radioélectrique subi, même si le brouillage est susceptible d'en compromettre le fonctionnement.

The device meets the exemption from the routine evaluation limits in section 2.5 of RSS 102 and compliance with RSS-102 RF exposure, users can obtain Canadian information on RF exposure and compliance.

Le dispositif rencontre l'exemption des limites courantes d'évaluation dans la section 2.5 de RSS 102 et la conformité à l'exposition de RSS-102 rf, utilisateurs peut obtenir l'information canadienne sur l'exposition et la conformité de rf.

This transmitter must not be co-located or operating in conjunction with any other antenna or transmitter. This equipment should be installed and operated with a minimum distance of 5 mm between the radiator and your body.

Cet émetteur ne doit pas être Co-placé ou ne fonctionnant en même temps qu'aucune autre antenne ou émetteur. Cet équipement devrait être installé et actionné avec une distance minimum de 5mm entre le radiateur et votre corps.

FCC Warning :

1. This device complies with Part 15 of the FCC Rules. Operation is subject to the following two conditions:

(1) This device may not cause harmful interference.

(2) This device must accept any interference received, including interference that may cause undesired operation.

2. Changes or modifications not expressly approved by the party responsible for compliance could void the user's authority to operate the equipment.

NOTE: This equipment has been tested and found to comply with the limits for a Class B digital device, pursuant to Part 15 of the FCC Rules. These limits are designed to provide reasonable protection against harmful interference in a residential installation.

This equipment generates uses and can radiate radio frequency energy and, if not installed and used in accordance with the instructions, may cause harmful interference to radio communications.

However, there is no guarantee that interference will not occur in a particular installation. If this equipment does cause harmful interference to radio or television reception, which can be determined by turning the equipment off and on, the user is encouraged to try to correct the interference by one or more of the following measures:

- Reorient or relocate the receiving antenna.

- Increase the separation between the equipment and receiver.

- Connect the equipment into an outlet on a circuit different from that to which the receiver is connected.

- Consult the dealer or an experienced radio/TV technician for help.