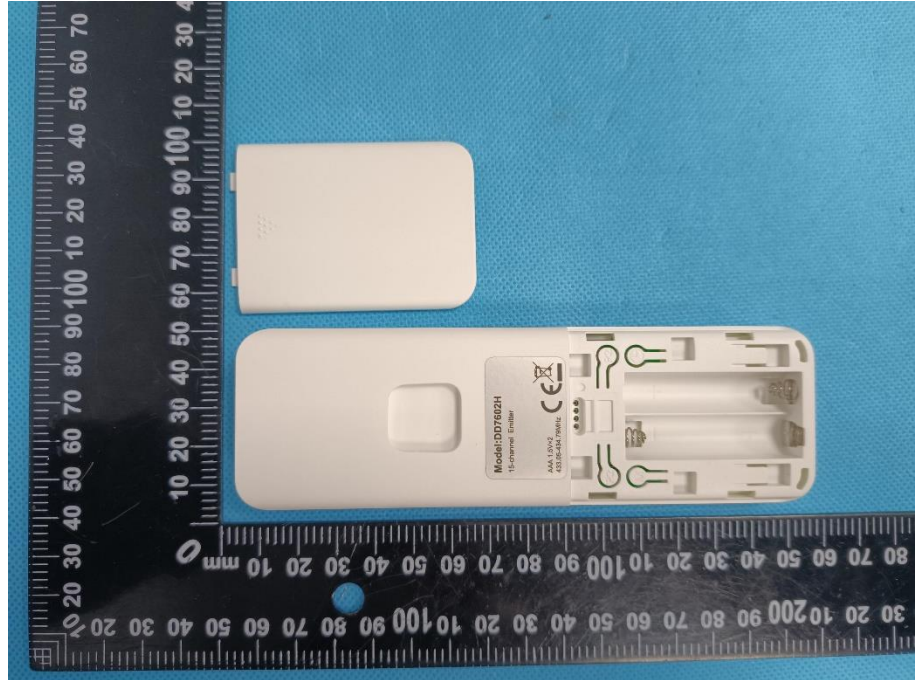


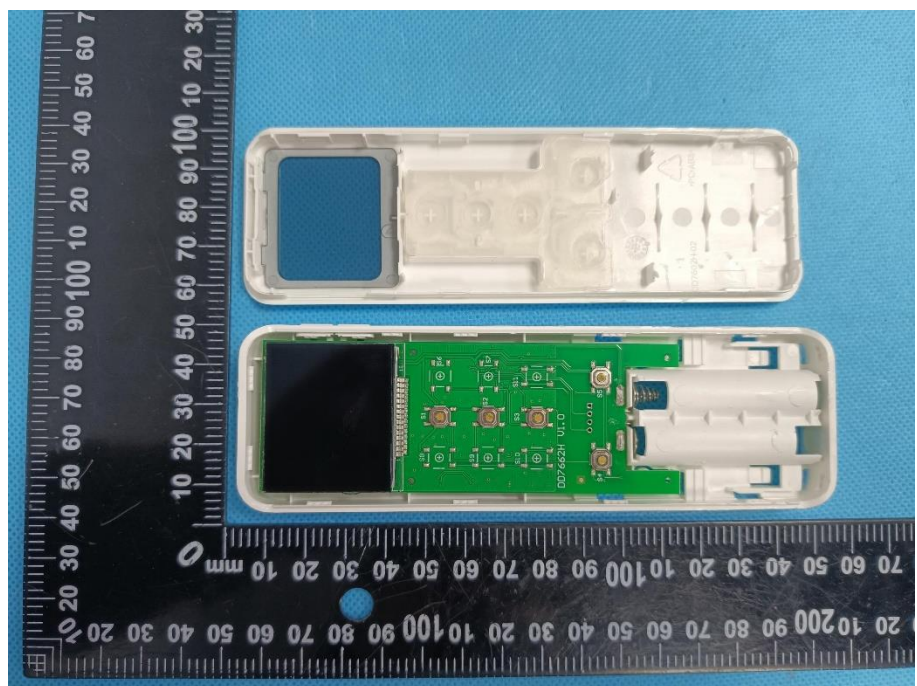
### EXHIBIT 3 - EUT INTERNAL PHOTOGRAPHS

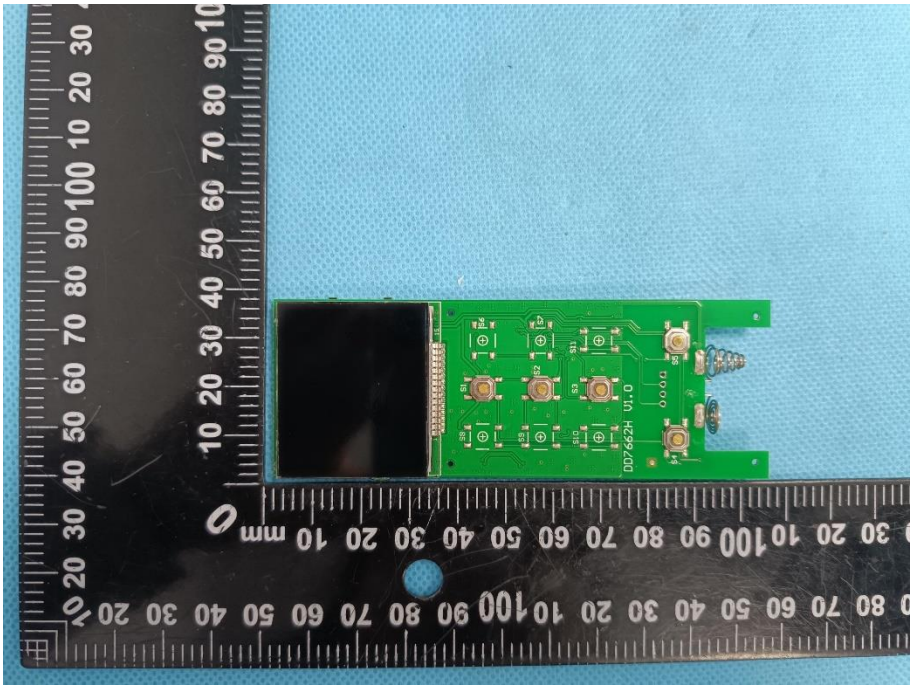
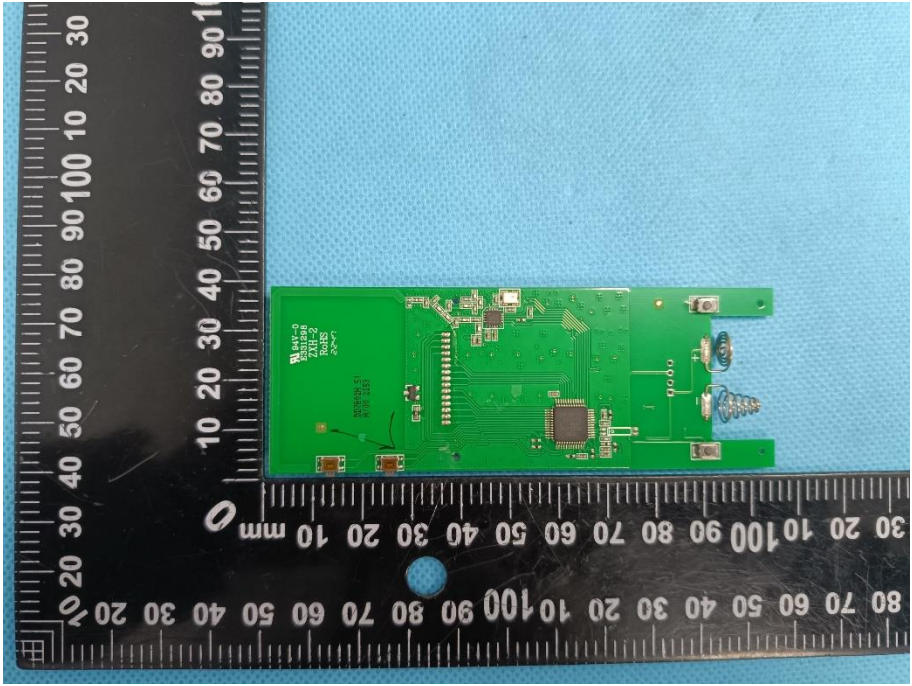
Model: DD7602H

**EUT Housing and Board View 1**

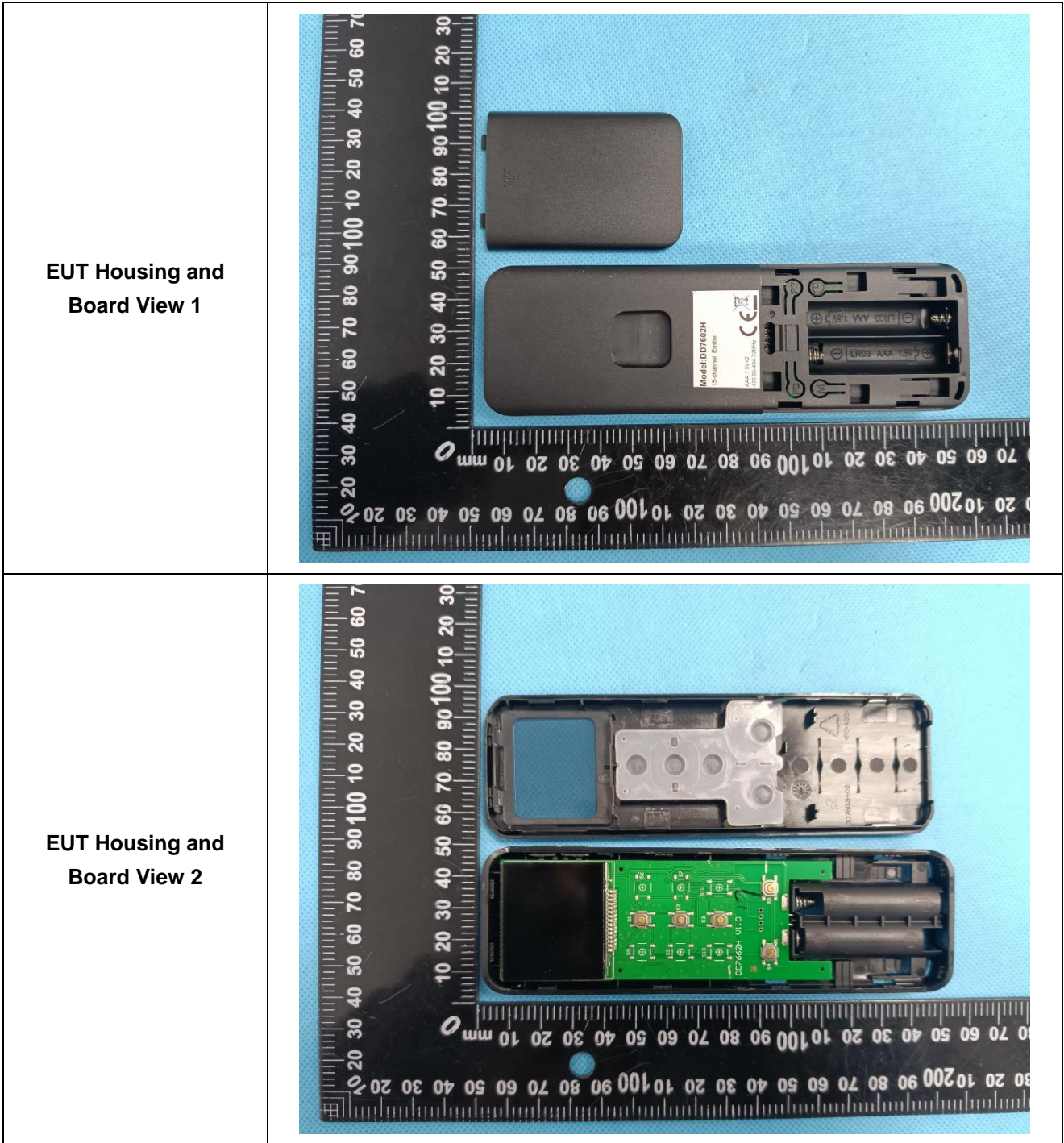


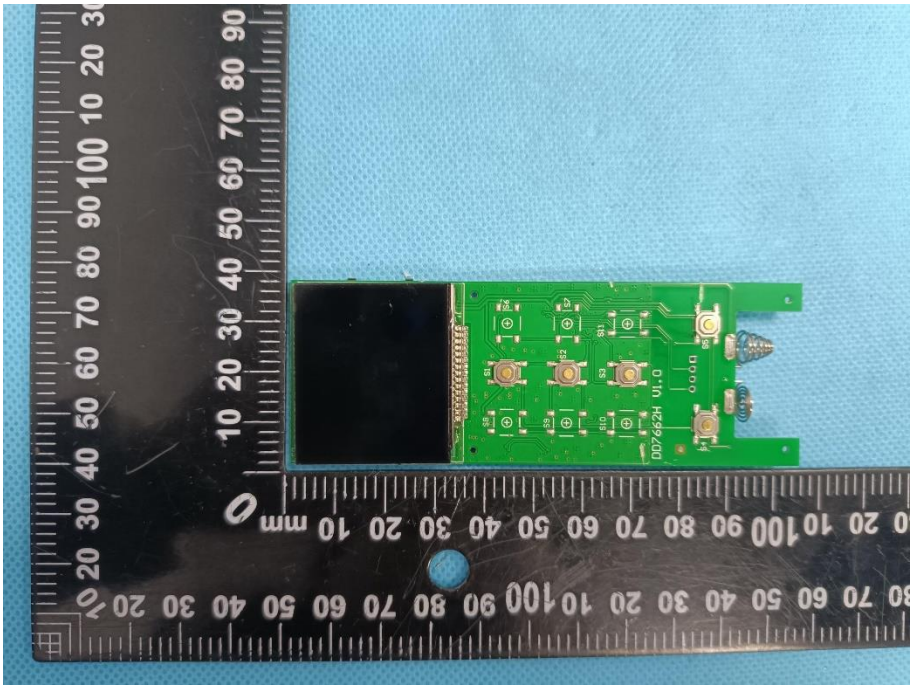
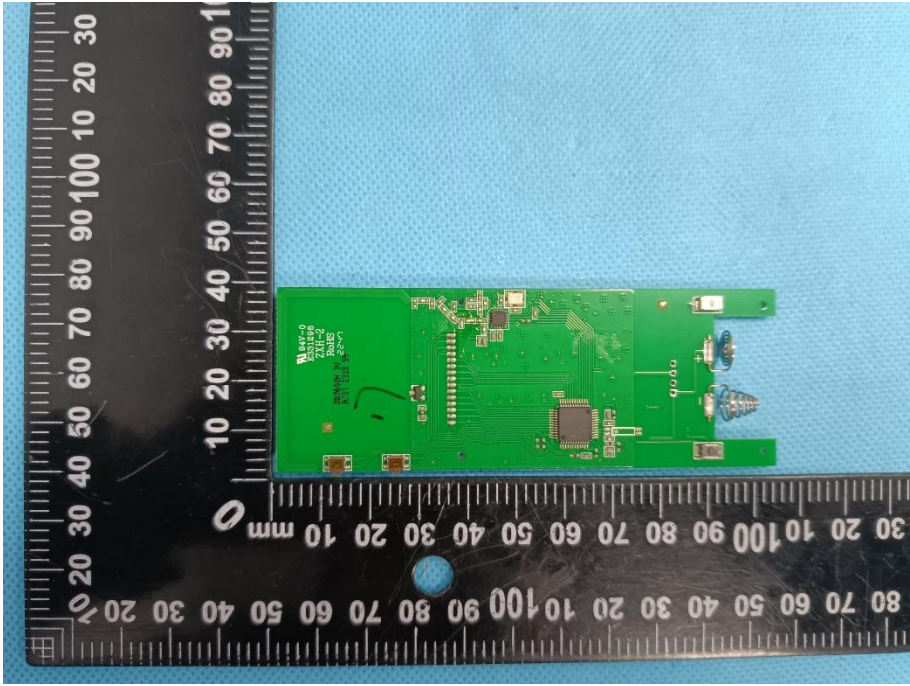
**EUT Housing and Board View 2**



<p><b>Solder Board-Component View 1</b></p>	 <p>A photograph of a green PCB component, labeled 'DD7652H U1.0', positioned on a black ruler. The ruler shows measurements in millimeters, with the component's length being approximately 100 mm. The component features several surface-mounted components, including resistors and capacitors, and a small black rectangular area on the left side. The background is a light blue textured surface.</p>
<p><b>Solder Board-Component View 2</b></p>	 <p>A photograph of the same green PCB component from a different perspective, showing the reverse side. The component is placed on a black ruler, which indicates its length is approximately 100 mm. The reverse side shows a large central chip, various surface components, and a small blue component on the right. The background is a light blue textured surface.</p>



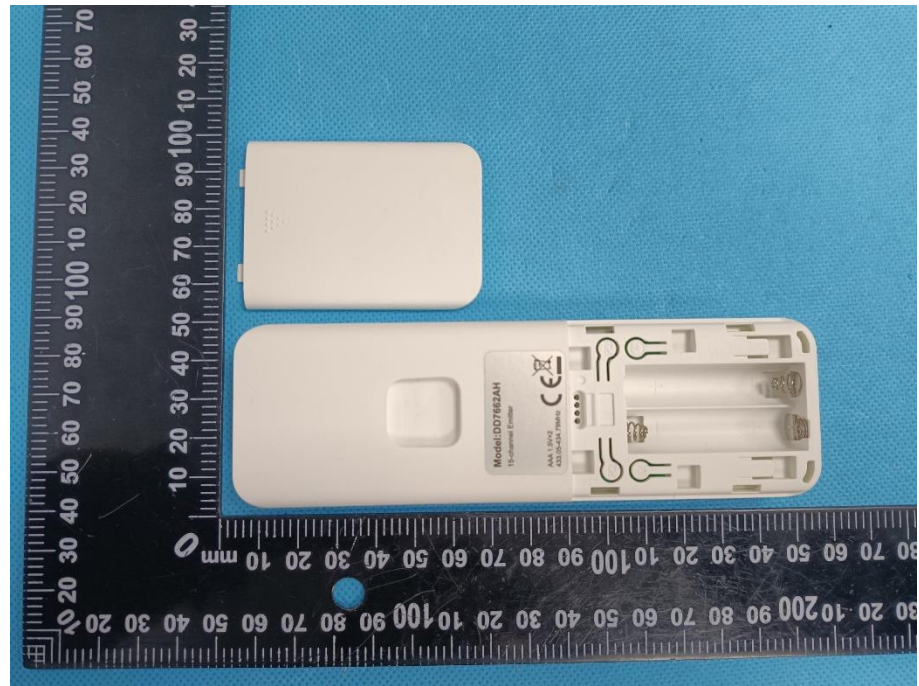


<p><b>Solder Board-Component View 1</b></p>	 <p>A photograph showing the front view of a green PCB component. The component is rectangular and features several gold-plated pads, a central chip, and various surface components. A black ruler with white markings is placed below the component for scale, showing measurements in millimeters. The ruler is oriented vertically, with the 0 mark at the top and the 100 mm mark at the bottom. The component is positioned between the 10 mm and 30 mm marks on the ruler. The background is a light blue textured surface.</p>
<p><b>Solder Board-Component View 2</b></p>	 <p>A photograph showing the back view of the same green PCB component. The back of the board is populated with various components, including a large central chip, several smaller components, and a connector. A black ruler with white markings is placed below the component for scale, showing measurements in millimeters. The ruler is oriented vertically, with the 0 mark at the top and the 100 mm mark at the bottom. The component is positioned between the 10 mm and 30 mm marks on the ruler. The background is a light blue textured surface.</p>

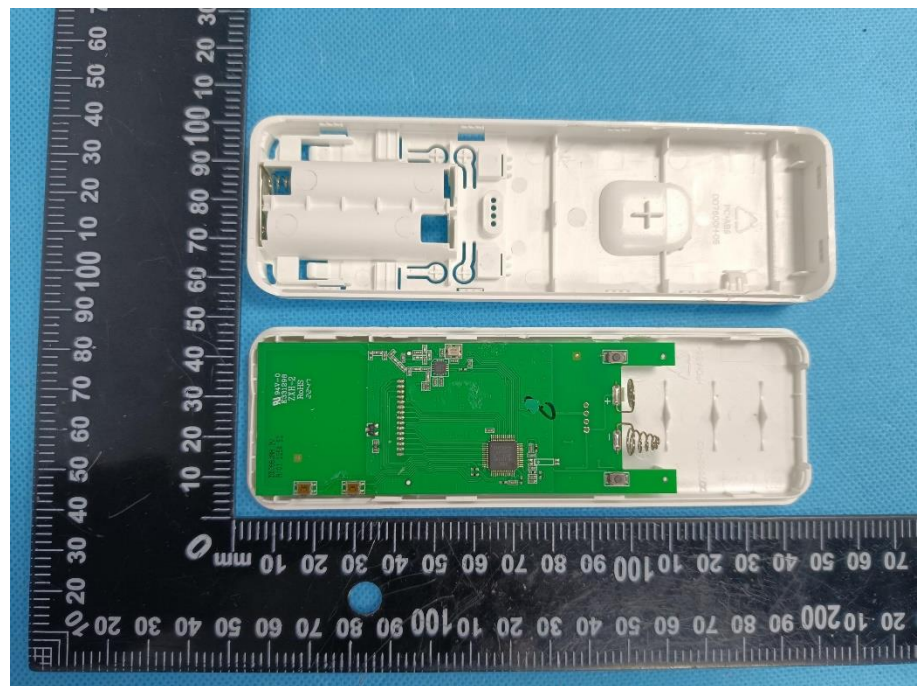


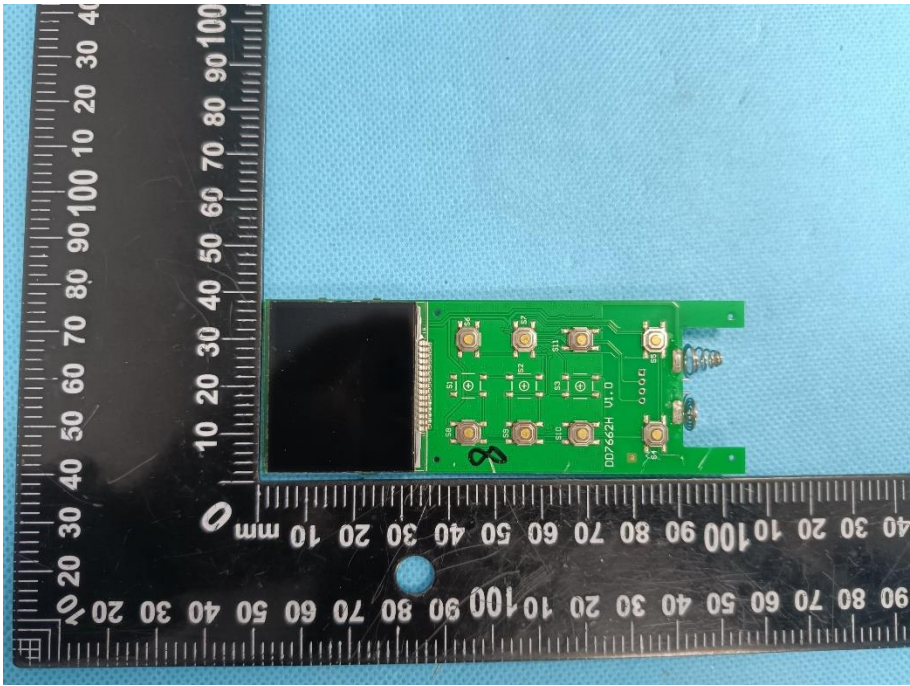
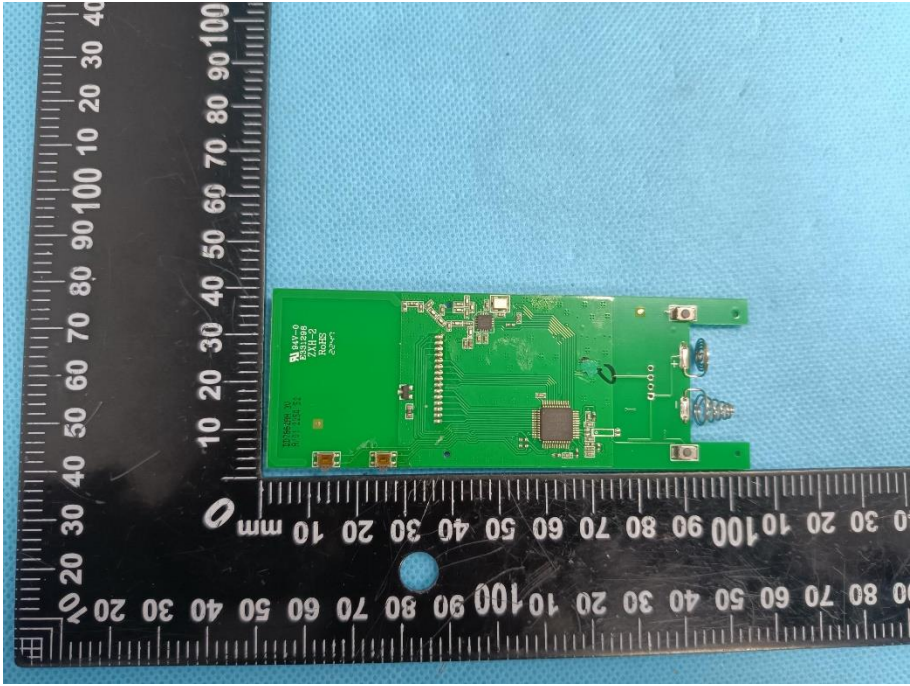
Model: DD7662AH

**EUT Housing and Board View 1**



**EUT Housing and Board View 2**



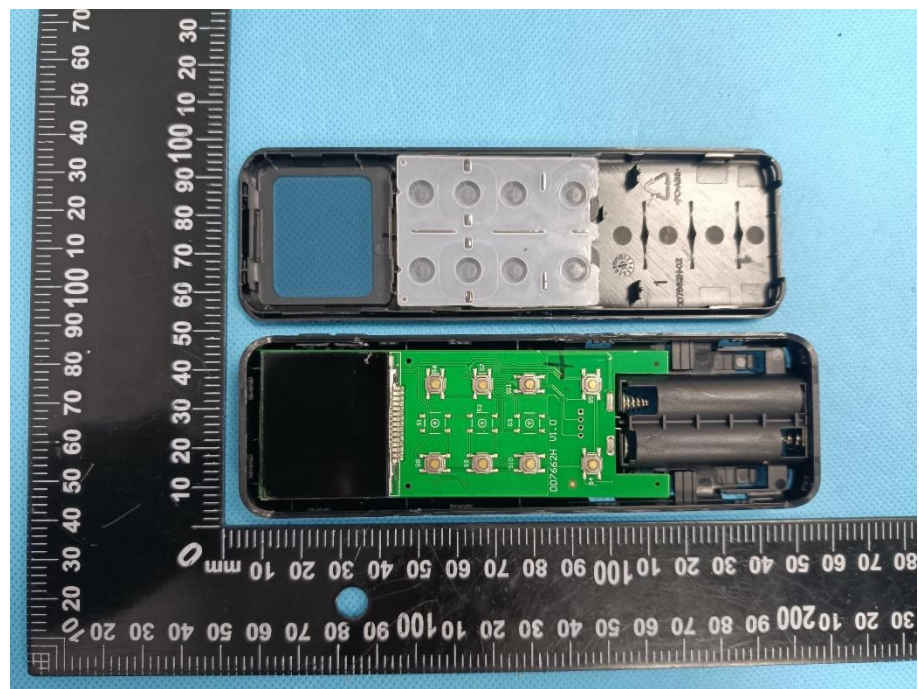
<p><b>Solder Board-Component View 1</b></p>	 <p>A photograph of a green PCB component, labeled 'View 1'. The component is rectangular and features several gold-plated circular pads and a central chip. It is placed on a blue textured surface next to a black ruler with white markings in millimeters. The ruler shows the component is approximately 100mm long and 20mm wide. The component has a black rectangular area on the left side and various electronic components and markings on the right side.</p>
<p><b>Solder Board-Component View 2</b></p>	 <p>A photograph of the same green PCB component, labeled 'View 2'. This view shows the reverse side of the component. It features a central chip, various electronic components, and a large area of gold-plated pads. The component is placed on a blue textured surface next to a black ruler with white markings in millimeters. The ruler shows the component is approximately 100mm long and 20mm wide. The component has a black rectangular area on the left side and various electronic components and markings on the right side.</p>

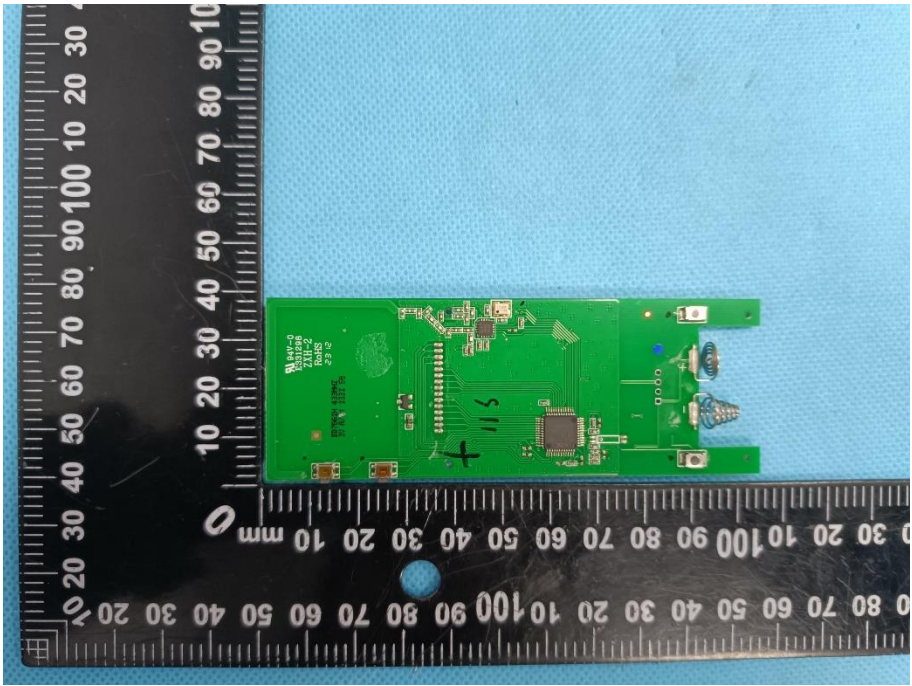
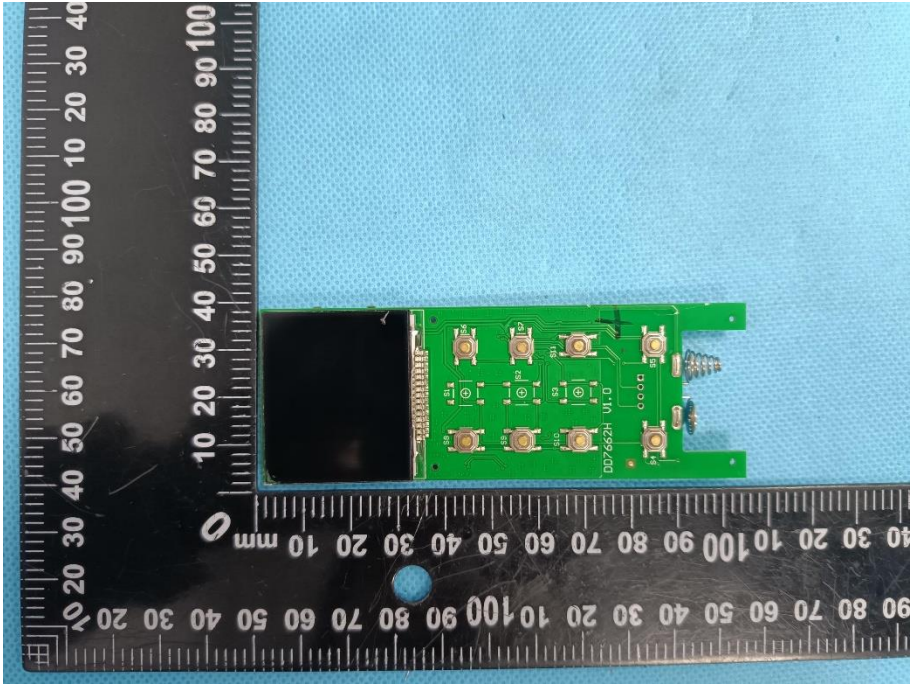


**EUT Housing and Board View 1**



**EUT Housing and Board View 2**

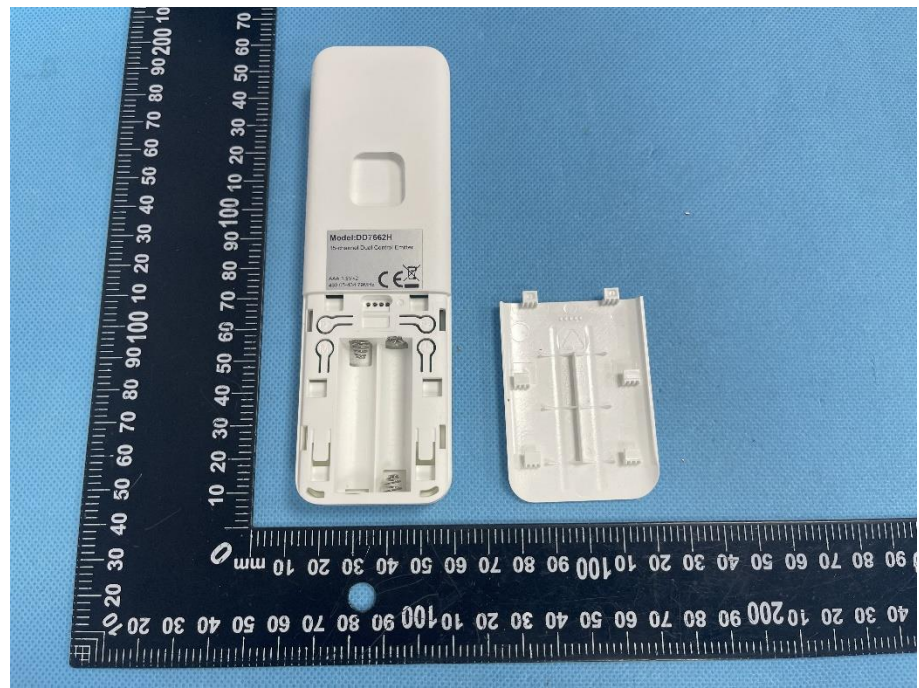


<p><b>Solder Board-Component View 1</b></p>	 <p>A photograph of a green PCB component, labeled 'View 1'. The component is rectangular and features a central integrated circuit (IC) with a large number of pins. To the right of the IC, there are several smaller components, including a capacitor and a resistor. The PCB is marked with 'WALTEK' and '23X12271230W'. A black ruler with white markings is placed below the component for scale, showing measurements in millimeters. The background is a light blue textured surface.</p>
<p><b>Solder Board-Component View 2</b></p>	 <p>A photograph of the same green PCB component, labeled 'View 2'. This view shows the component from a different angle, highlighting the solder joints and the components on the opposite side of the PCB. The central IC is visible, along with several smaller components and a connector. A black ruler with white markings is placed below the component for scale, showing measurements in millimeters. The background is a light blue textured surface.</p>

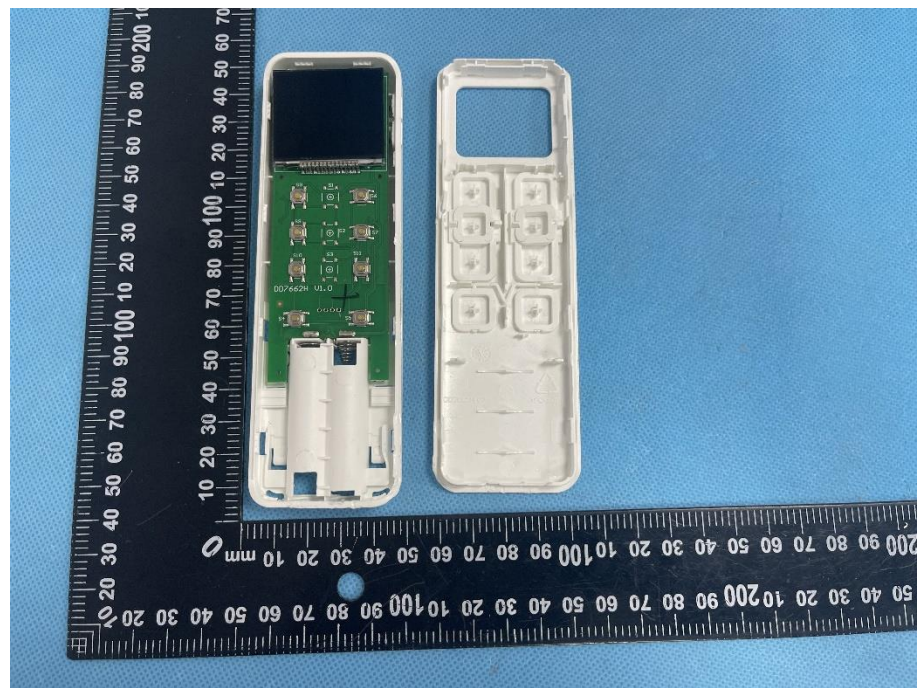


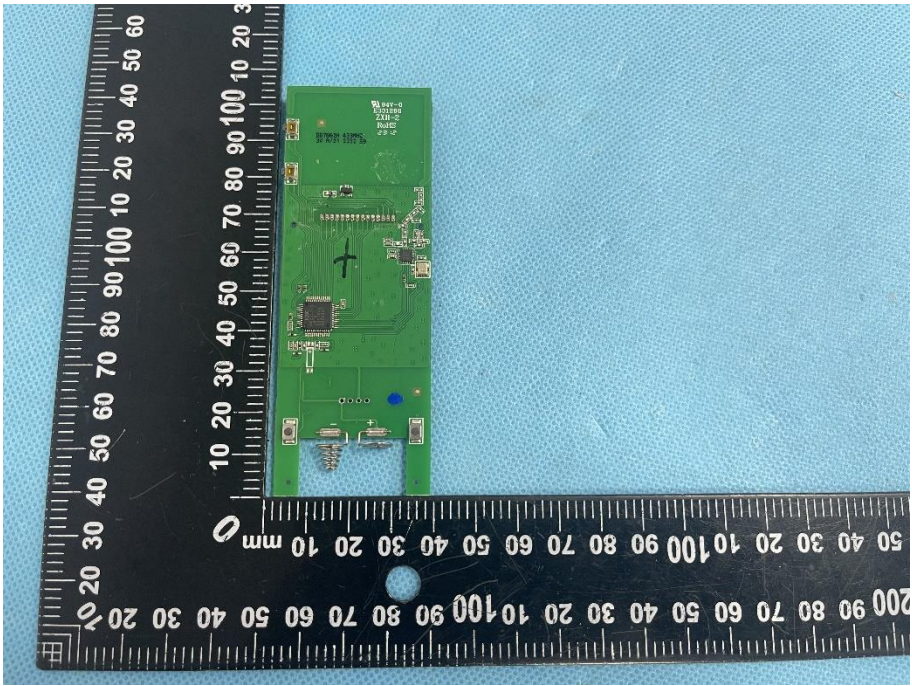
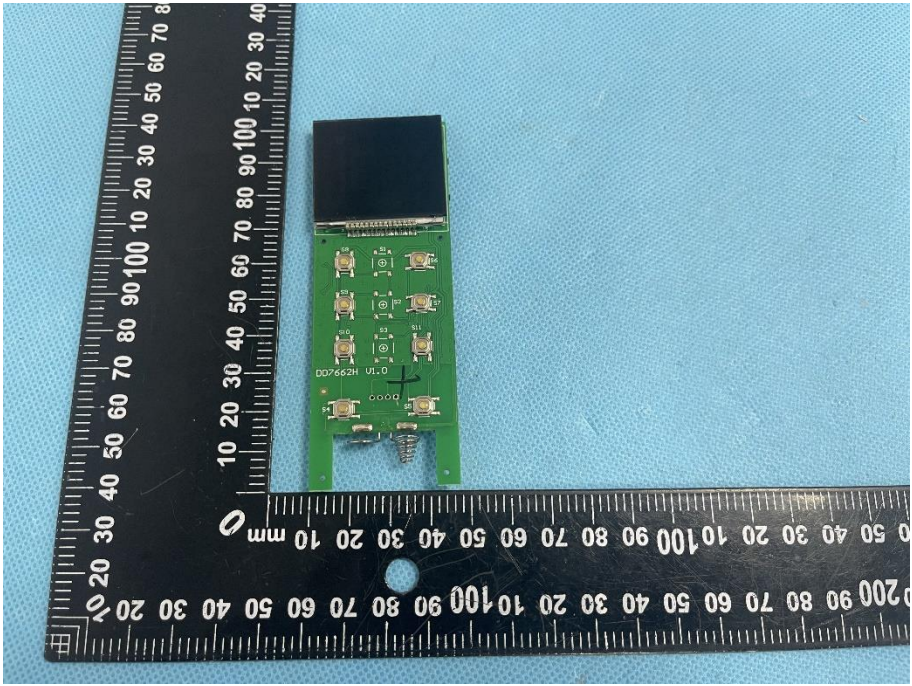
Model: DD7662H

**EUT Housing and Board View 1**



**EUT Housing and Board View 2**



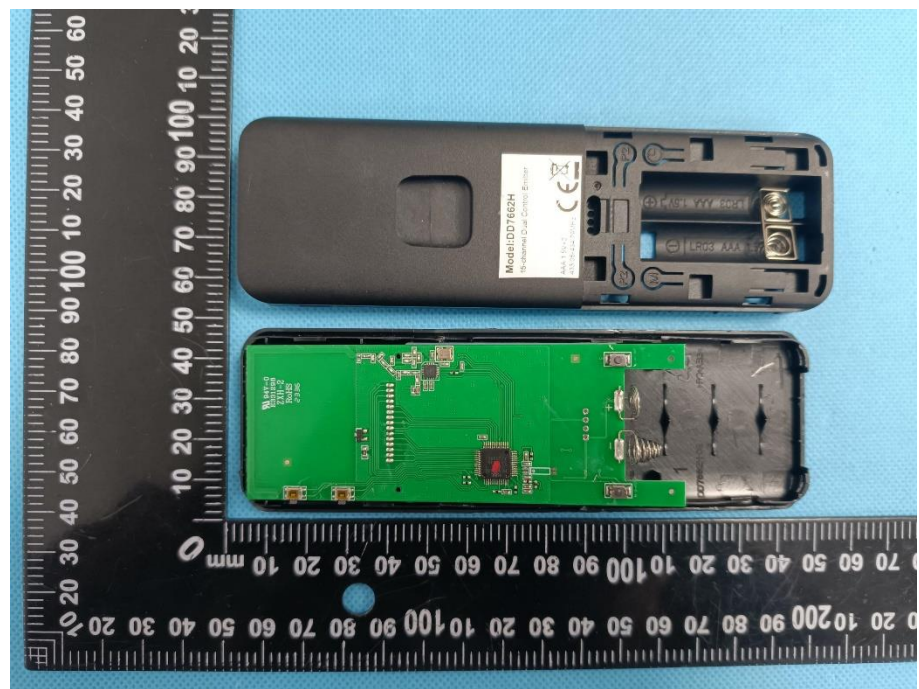
<p><b>Solder Board-Component View 1</b></p>	 <p>A photograph of a green printed circuit board (PCB) component, labeled 'View 1'. The board is rectangular and populated with various electronic components, including a large integrated circuit (IC) in the center, several smaller surface-mount components, and a connector at the bottom. A black ruler with white markings is placed to the left and bottom of the board for scale. The ruler shows measurements in millimeters, with the board's length being approximately 100 mm. The background is a light blue textured surface.</p>
<p><b>Solder Board-Component View 2</b></p>	 <p>A photograph of the same green PCB component, labeled 'View 2'. This view shows the reverse side of the board, which is populated with several surface-mount components, including what appear to be capacitors and resistors. A black ruler with white markings is placed to the left and bottom of the board for scale. The ruler shows measurements in millimeters, with the board's length being approximately 100 mm. The background is a light blue textured surface.</p>

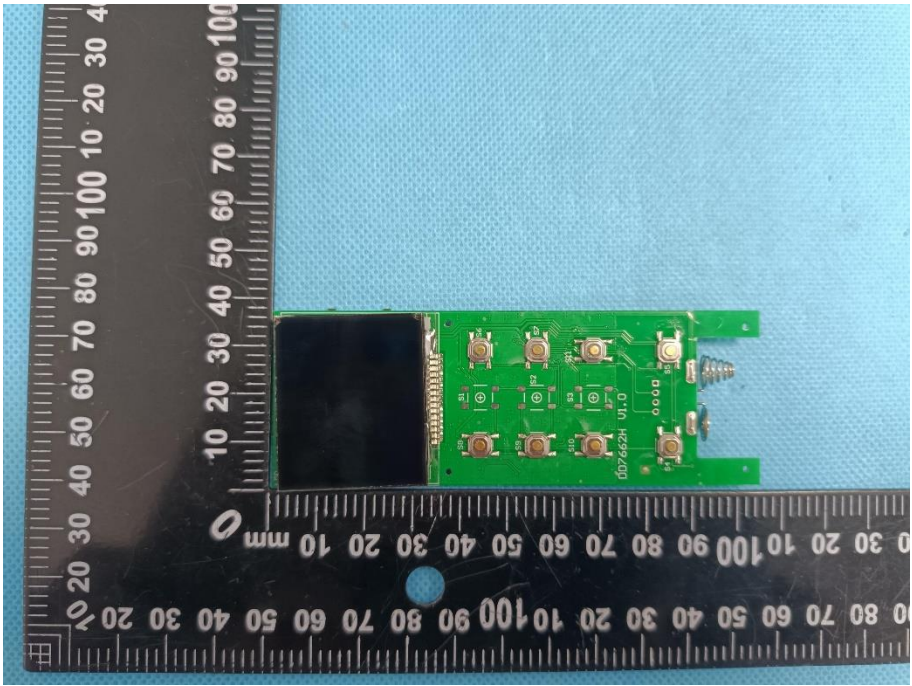
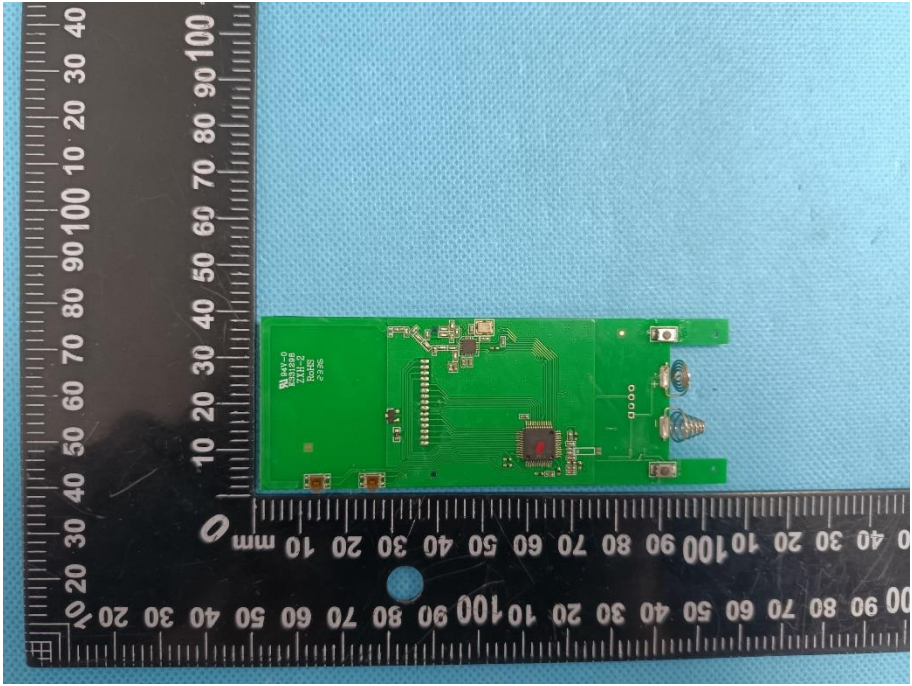


**EUT Housing and Board View 1**



**EUT Housing and Board View 2**



<p><b>Solder Board-Component View 1</b></p>	 <p>A photograph of a green PCB component, labeled 'View 1'. The component is rectangular and features a black rectangular area on the left side. It is populated with several surface-mount components, including resistors and capacitors. A ruler is placed below the component for scale, showing measurements in millimeters. The ruler is marked from 0 to 100 mm.</p>
<p><b>Solder Board-Component View 2</b></p>	 <p>A photograph of the same green PCB component, labeled 'View 2'. This view shows the reverse side of the component, revealing various components such as a microcontroller, resistors, and capacitors. A ruler is placed below the component for scale, showing measurements in millimeters. The ruler is marked from 0 to 100 mm.</p>



Antenna View

