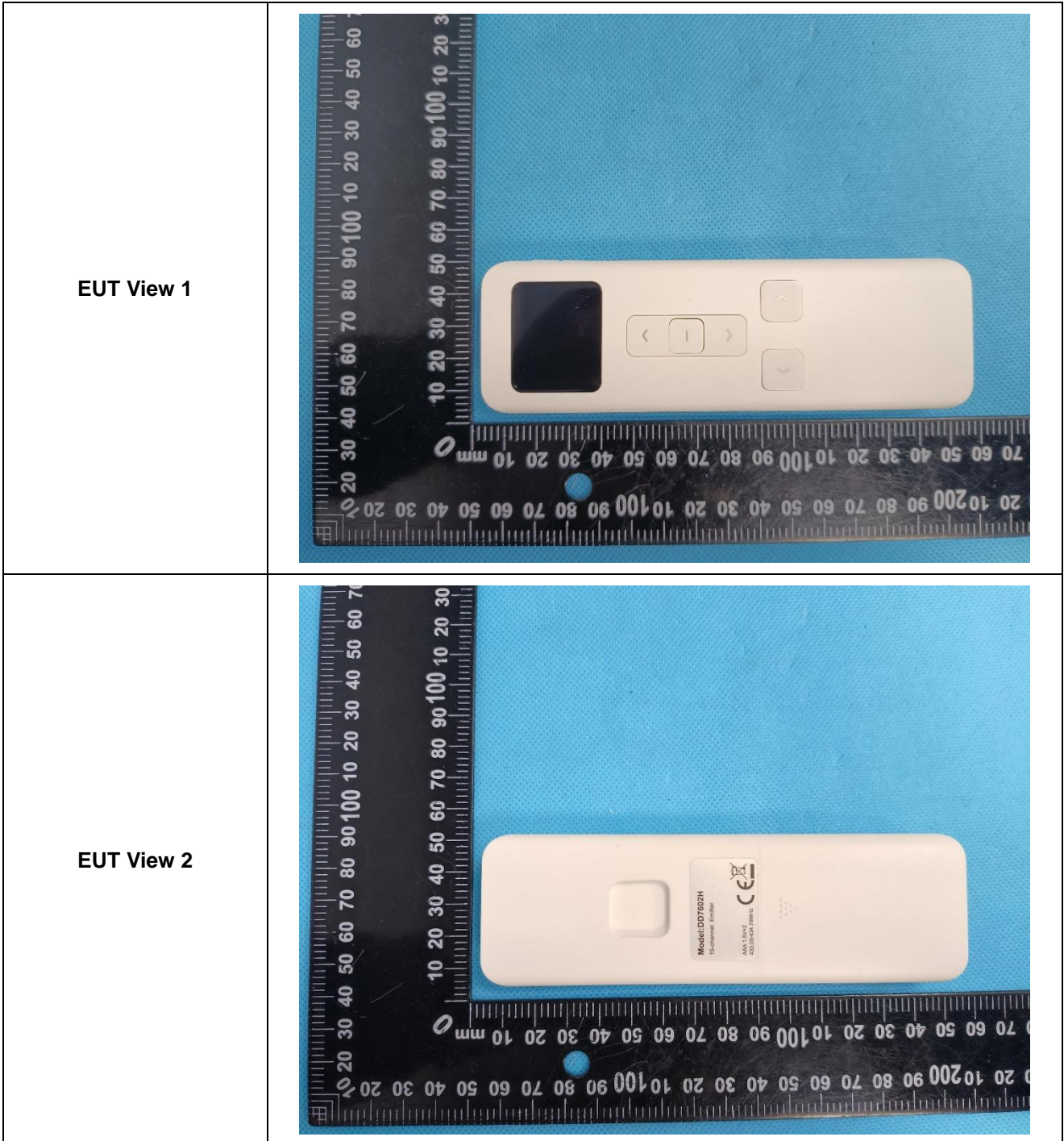
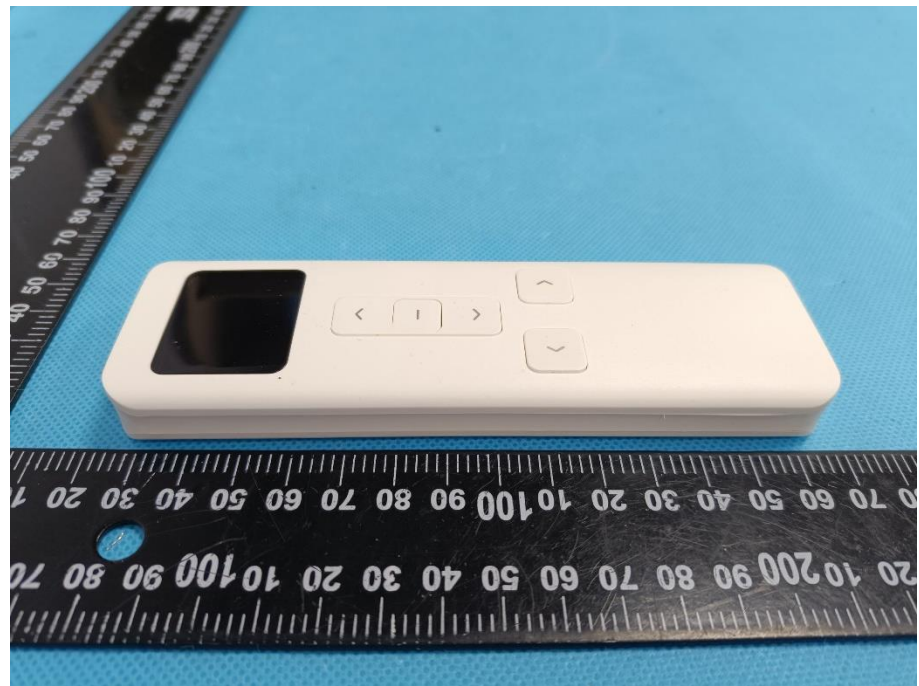


EXHIBIT 2 - EUT EXTERNAL PHOTOGRAPHS

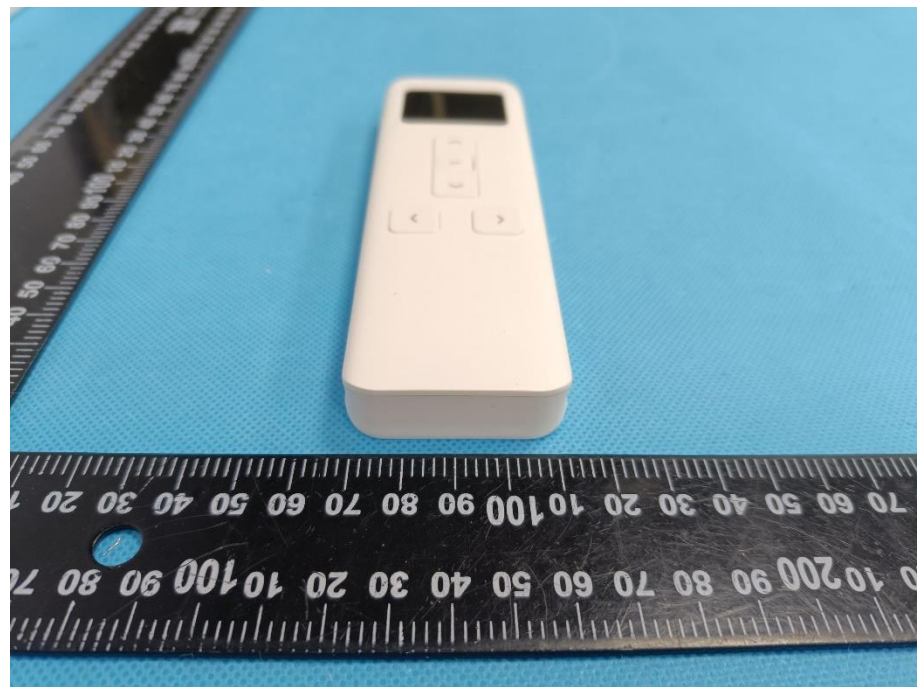
Model: DD7602H



EUT View 3



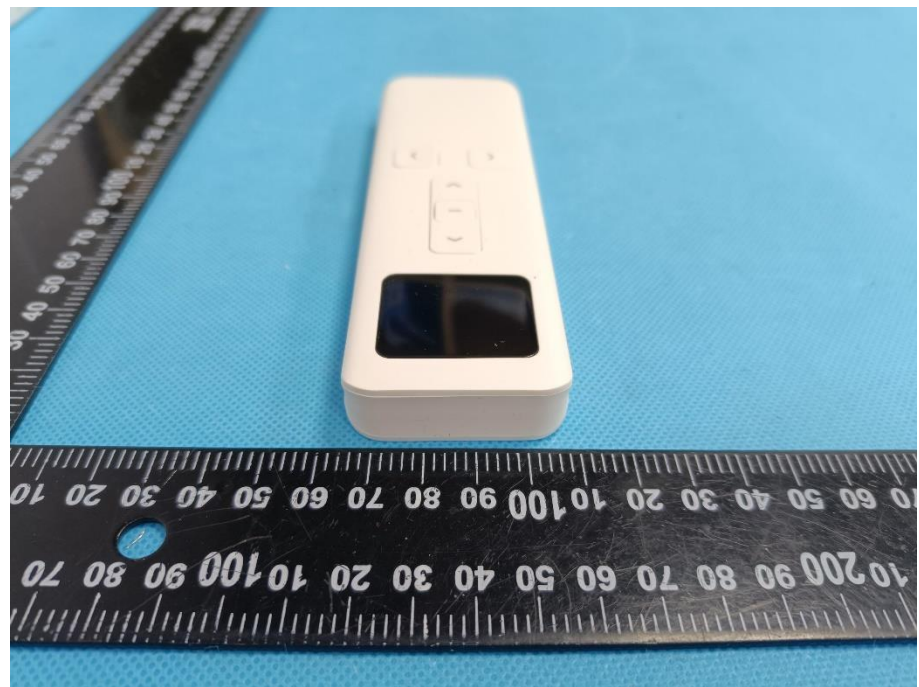
EUT View 4


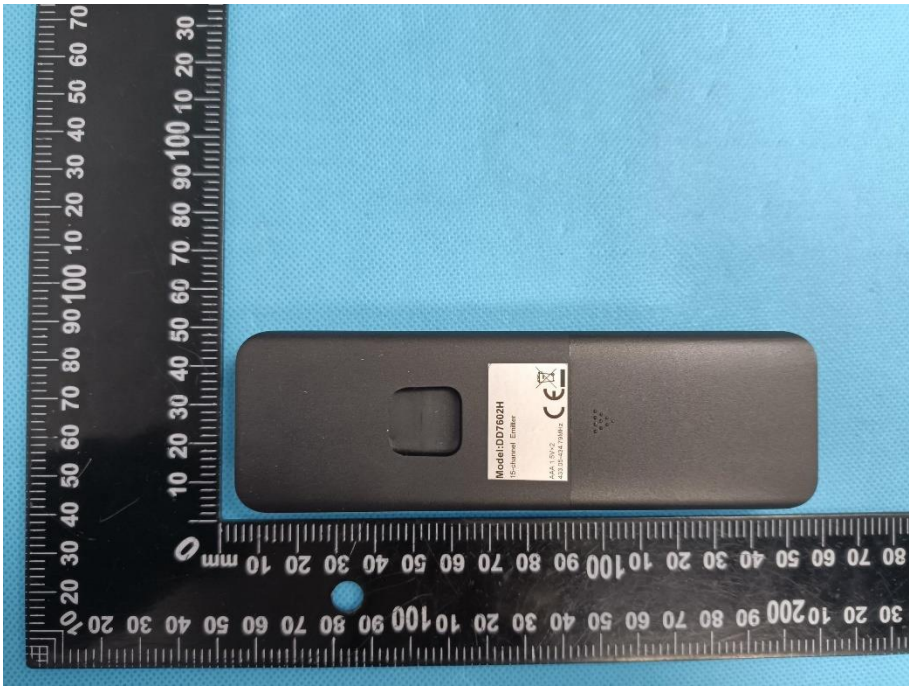


EUT View 5



EUT View 6



<p>EUT View 1</p>	
<p>EUT View 2</p>	

EUT View 3



EUT View 4



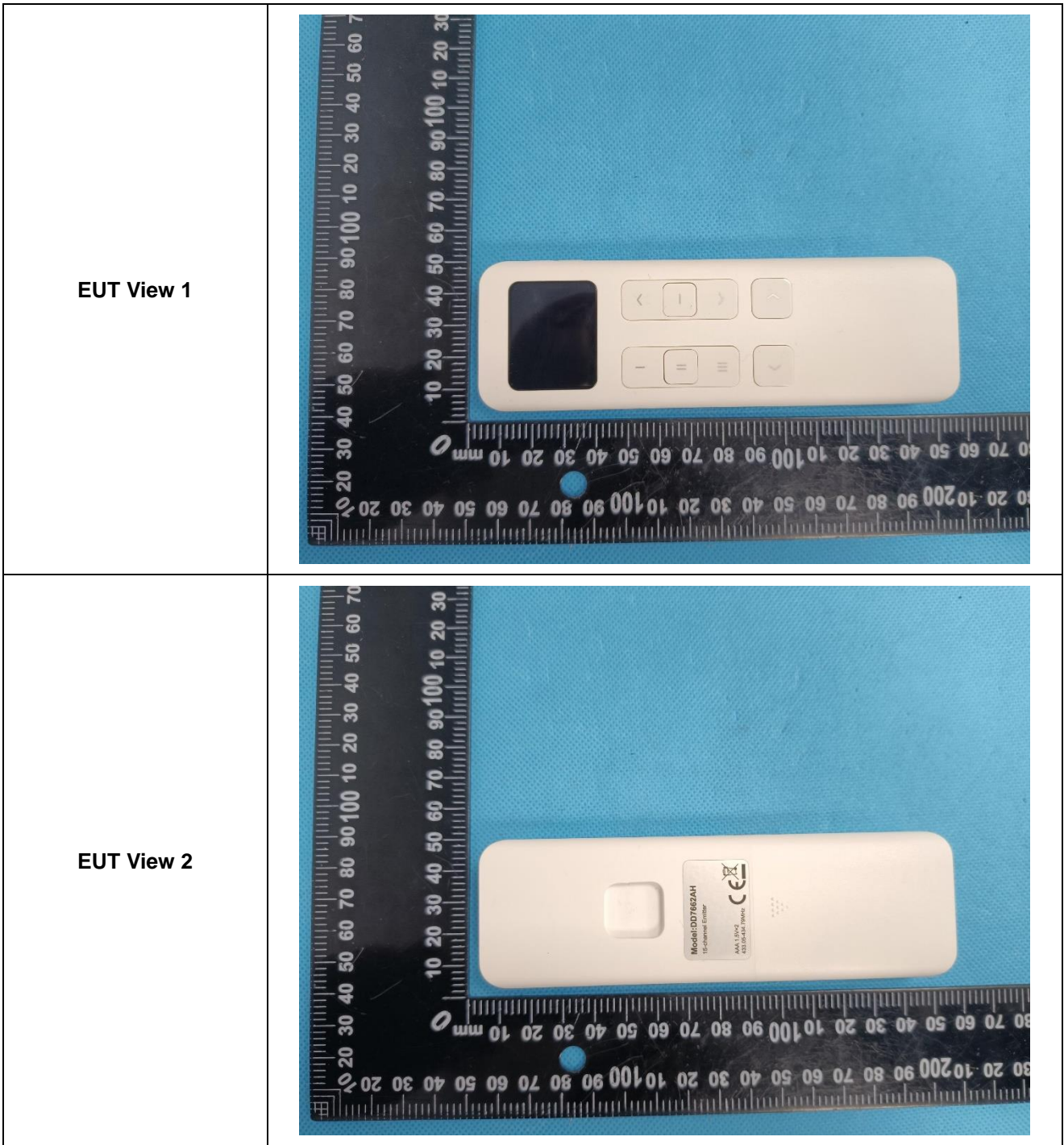
EUT View 5



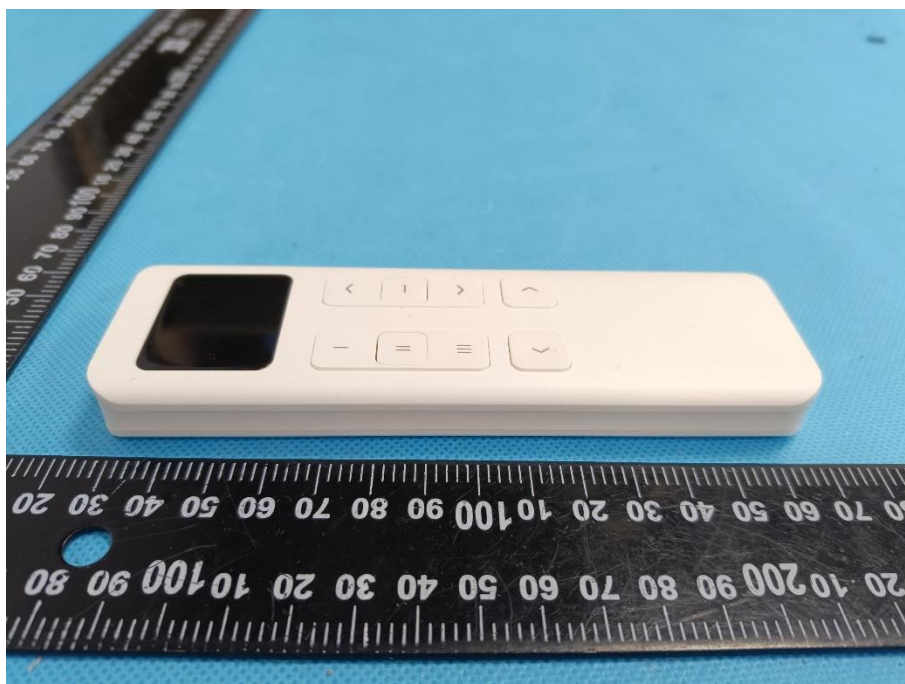
EUT View 6



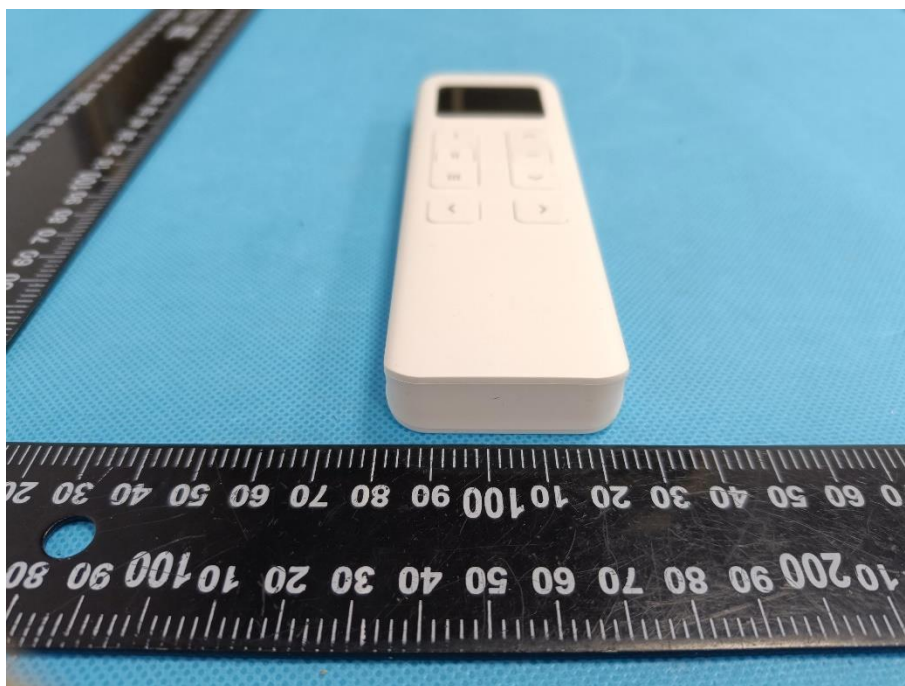
Model: DD7662AH



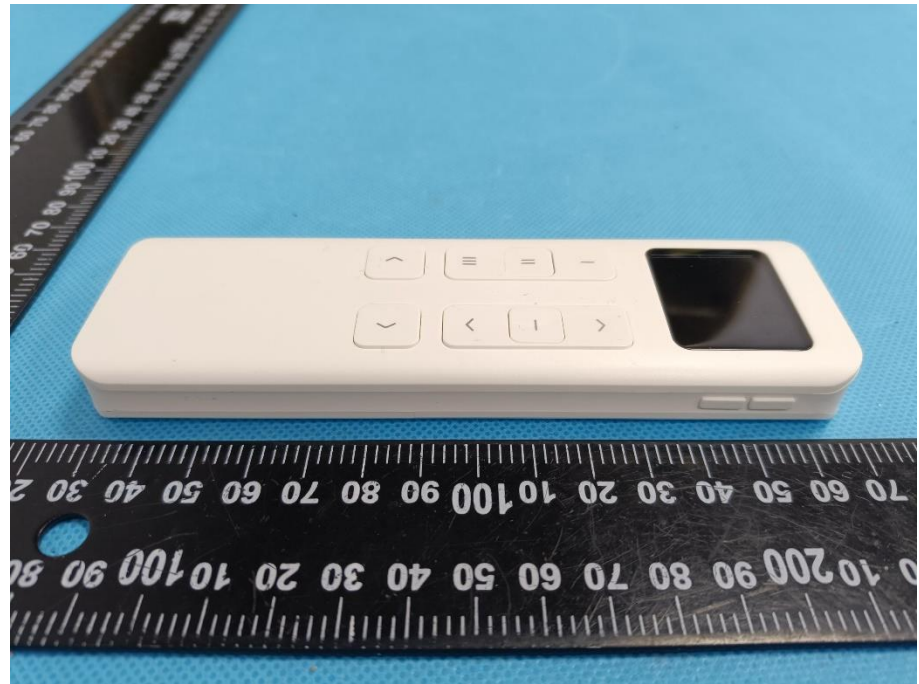
EUT View 3



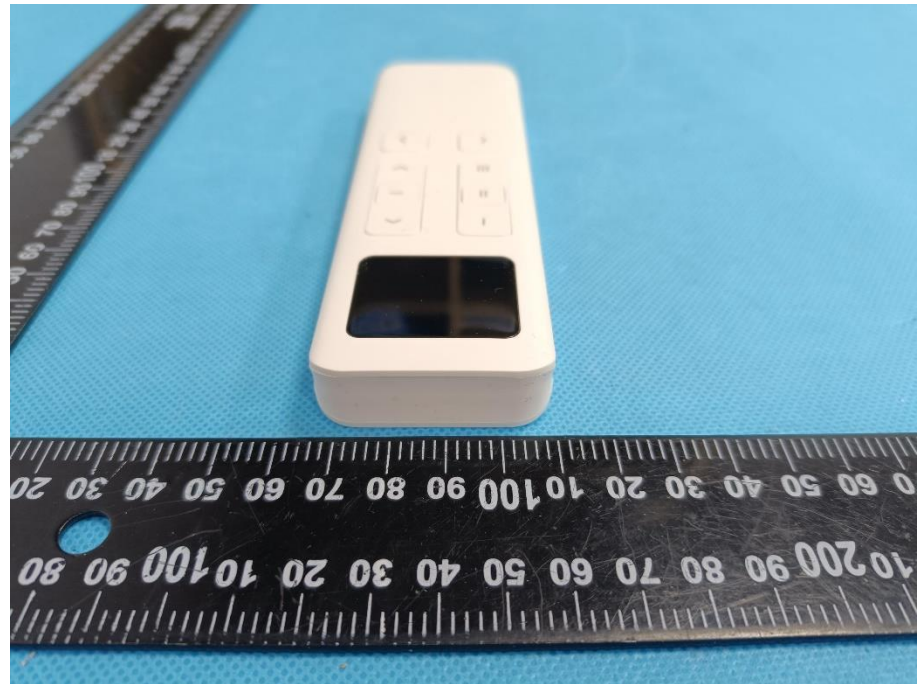
EUT View 4







EUT View 5



EUT View 6



<p>EUT View 1</p>	 <p>A photograph showing the front view of a black handheld electronic device. The device features a camera lens on the left side, a set of four navigation buttons (left arrow, center bar, right arrow, and up arrow) in the middle, and another set of four buttons (left arrow, equals sign, right arrow, and down arrow) below them. A speaker grille is visible on the right side. A black ruler with white markings is placed horizontally below the device for scale, showing measurements in millimeters and centimeters. The background is a light blue textured surface.</p>
<p>EUT View 2</p>	 <p>A photograph showing the back view of the same black handheld electronic device. A battery cover latch is visible on the left side. A white label is affixed to the back, containing the text: "Model:DD7662AH", "11-Channel Encoder", "AAA 1.5Vx2", and "43303AH-F001H". The CE certification logo is also present on the label. A speaker grille is visible on the right side. A black ruler with white markings is placed horizontally below the device for scale, showing measurements in millimeters and centimeters. The background is a light blue textured surface.</p>

<p>EUT View 3</p>	 A black handheld electronic device is shown from a top-down perspective. The device has a rectangular shape with rounded corners. On the left side, there is a small, dark, rectangular screen. To the right of the screen, there are two rows of buttons. The top row contains three buttons: a left arrow, a central button with a vertical line, and a right arrow. The bottom row contains three buttons: a left arrow, a central button with a horizontal line, and a right arrow. The device is placed on a light blue textured surface. A black ruler with white markings is positioned below the device, showing measurements in centimeters. The ruler is oriented horizontally, with the 0 mark on the left and the 100 mark on the right. The device's length is approximately 10 cm.
<p>EUT View 4</p>	 The same black handheld electronic device is shown from a different perspective, oriented vertically. The device is centered in the frame. The ruler below it is also oriented vertically, with the 0 mark at the top and the 100 mark at the bottom. The device's height is approximately 10 cm. The background is the same light blue textured surface.



EUT View 5



EUT View 6



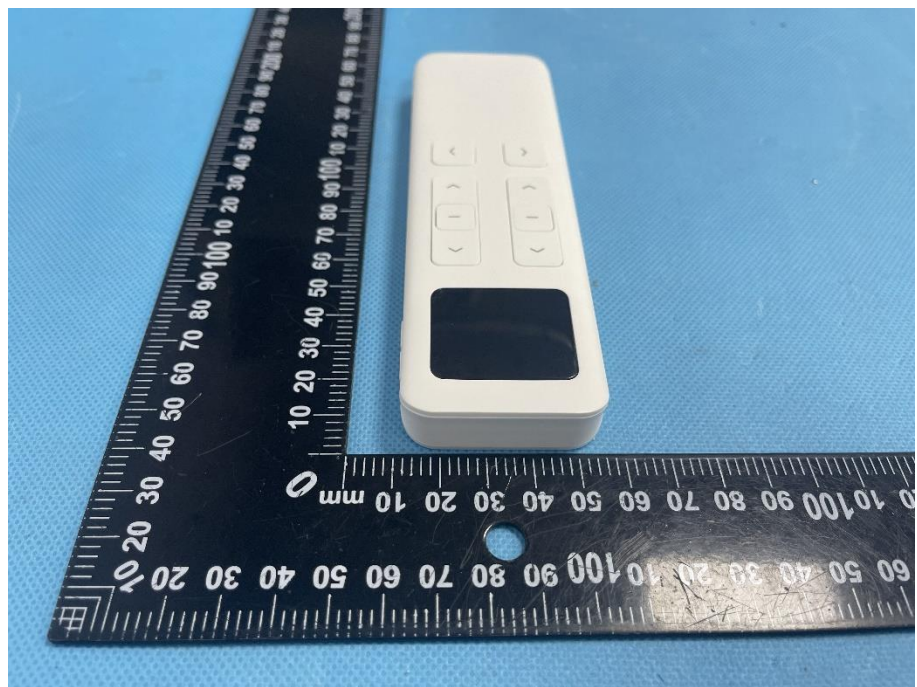
Model: DD7662H



<p>EUT View 1</p>	
<p>EUT View 2</p>	


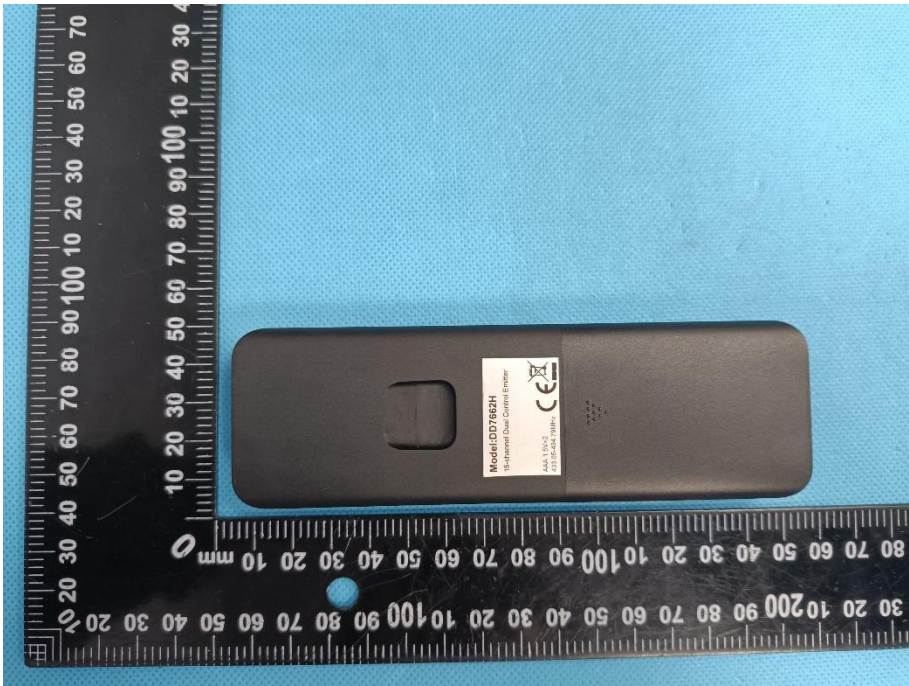
EUT View 3



EUT View 4



<p>EUT View 5</p>	 A photograph showing a white, rectangular electronic device (EUT) lying on a blue textured surface. The device has a small black screen on the left and four square buttons on the right. A black ruler with white markings is placed below the device for scale. The ruler shows centimeter and millimeter markings.
<p>EUT View 6</p>	 A photograph showing the back of the white electronic device. A small square feature is visible near the top. A label is affixed to the back, containing the following text: "Model: DD762H", "Thermal Cut Control Switch", "MAX: 700V", and "2000W/1000VA". Below the text are CE and RoHS compliance symbols. A black ruler with white markings is placed to the left of the device for scale.

<p>EUT View 1</p>	 <p>A photograph showing the front view of a black handheld electronic device. The device features a small rectangular screen on the left side and four directional buttons (left, right, up, down) arranged in a 2x2 grid on the right side. The device is placed on a blue textured surface. A black ruler with white markings is positioned vertically to the left of the device, showing measurements in millimeters and centimeters. The ruler is oriented vertically, with the 0 mark at the top and the 100 mm mark at the bottom.</p>
<p>EUT View 2</p>	 <p>A photograph showing the back view of the same black handheld electronic device. The back of the device is mostly plain black with a small rectangular cutout on the left side. A white label is affixed to the back, containing the following text: "Model: CDD7862H", "10-Channel Dual Channel Engine", a CE mark, "A441 19025", and "01150444 019194". The device is placed on a blue textured surface. A black ruler with white markings is positioned vertically to the left of the device, showing measurements in millimeters and centimeters. The ruler is oriented vertically, with the 0 mark at the top and the 100 mm mark at the bottom.</p>

EUT View 3



EUT View 4



EUT View 5



EUT View 6

