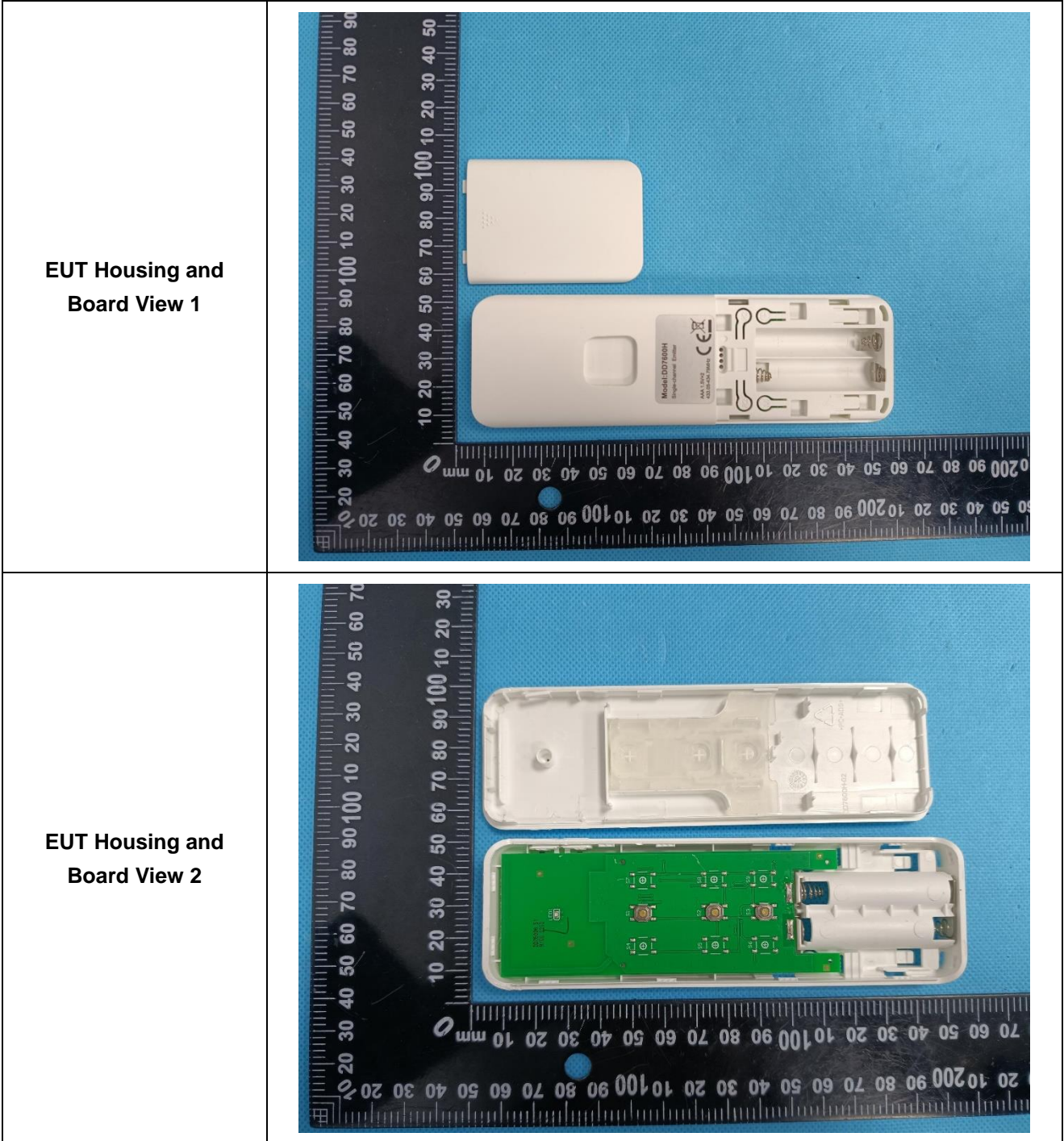
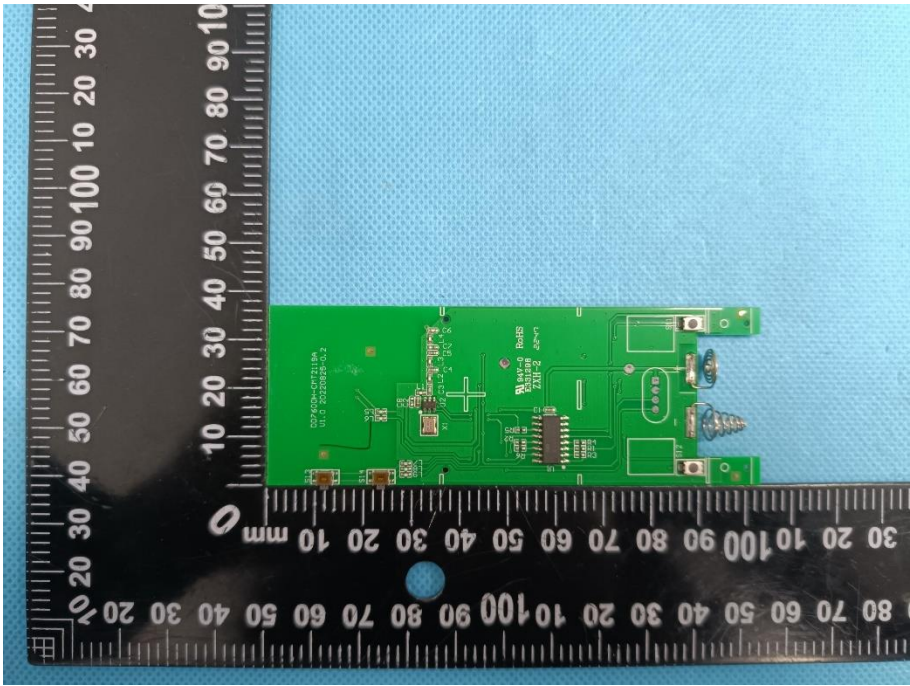
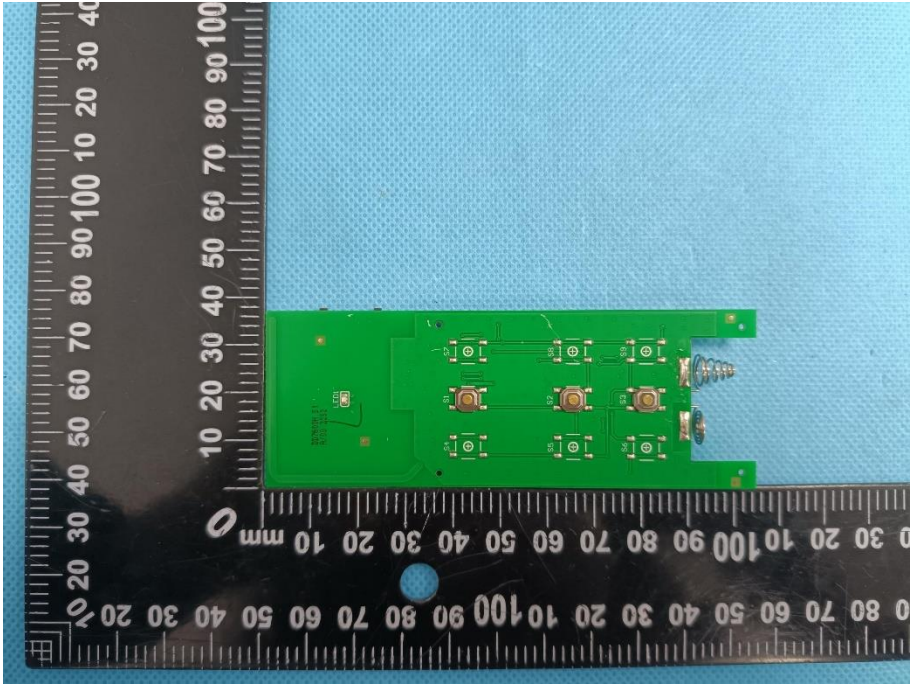


EXHIBIT 3 - EUT INTERNAL PHOTOGRAPHS

Model: DD7600

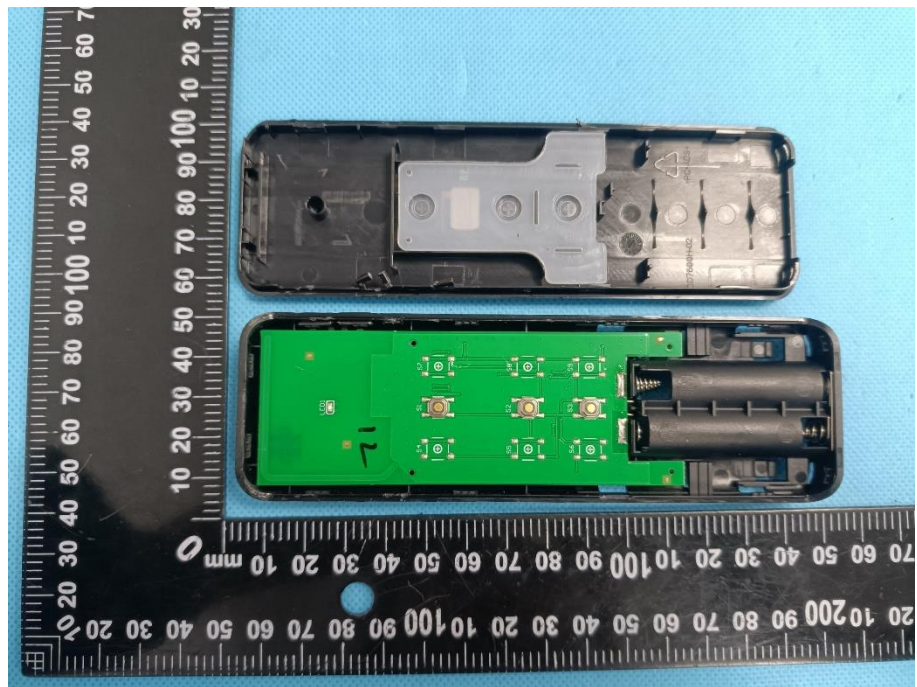


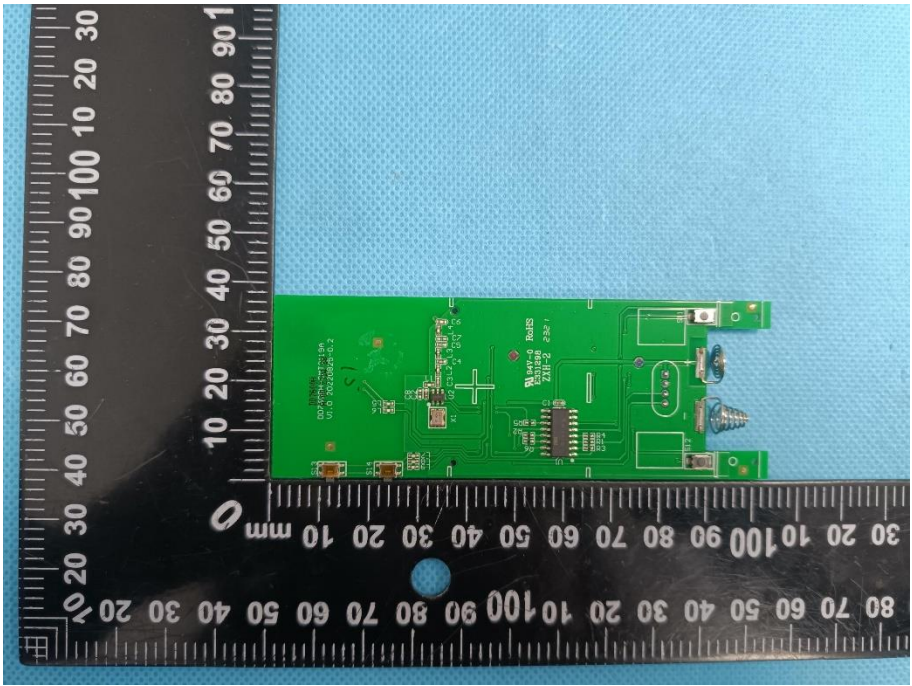
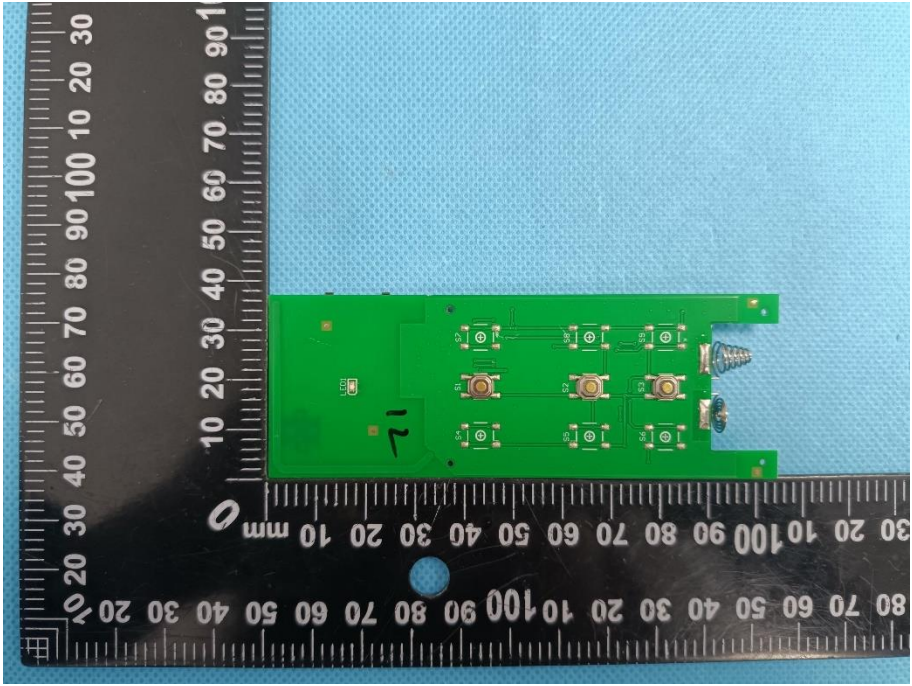
<p>Solder Board-Component View 1</p>	 <p>A photograph of a green PCB component, labeled 'View 1'. The component is rectangular and features various electronic components including a central integrated circuit (IC) with 'ALMOS' and 'ZNF-2' markings, several resistors, and a small capacitor. It is positioned next to a black ruler with white markings in millimeters. The ruler shows the component is approximately 100 mm long and 30 mm wide. The background is a light blue textured surface.</p>
<p>Solder Board-Component View 2</p>	 <p>A photograph of the same green PCB component, labeled 'View 2'. This view shows the reverse side of the component, highlighting the solder joints and the underside of the components. The central IC and other components are visible from below. It is positioned next to the same black ruler as in View 1, showing its dimensions. The background is the same light blue textured surface.</p>

EUT Housing and Board View 1



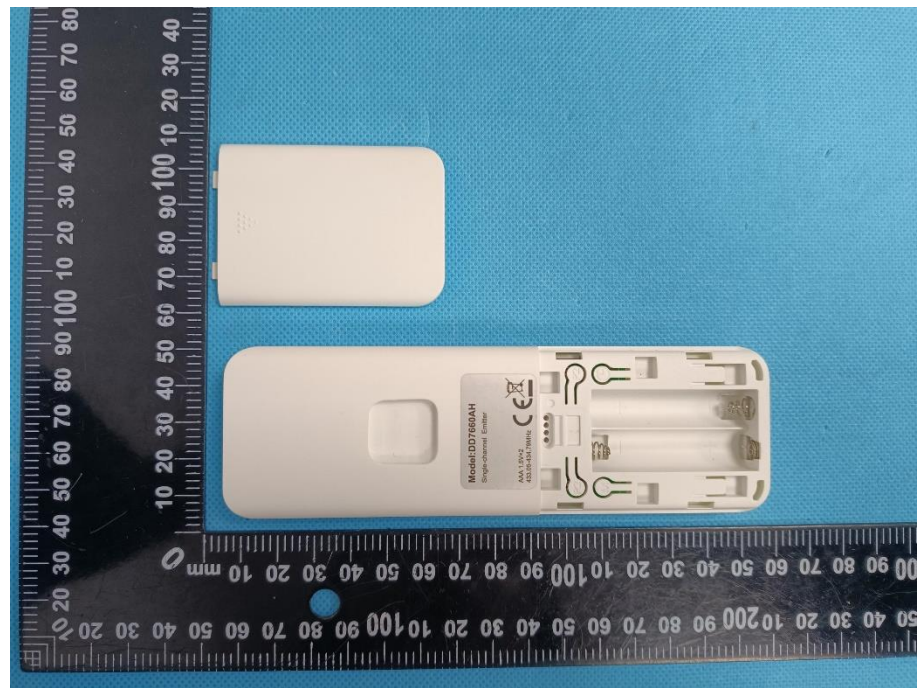
EUT Housing and Board View 2



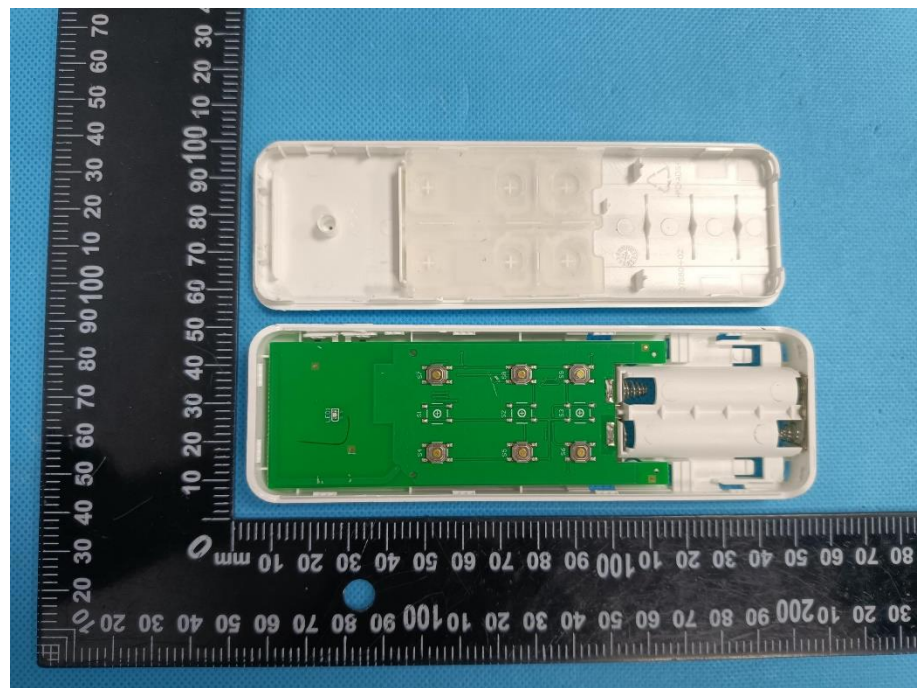
<p>Solder Board-Component View 1</p>	 <p>A photograph of a green PCB component, labeled 'View 1'. The component is rectangular and populated with various electronic components, including a central integrated circuit (IC) with a large number of pins, several smaller ICs, and surface-mount components. A silver screw is visible on the right side. The component is placed on a black surface with a white ruler for scale. The ruler shows measurements in millimeters, with markings every 10 mm and sub-markings every 1 mm. The component's length is approximately 100 mm and its width is approximately 30 mm. The background is a light blue textured surface.</p>
<p>Solder Board-Component View 2</p>	 <p>A photograph of the same green PCB component, labeled 'View 2'. This view shows the component from a different angle, highlighting the solder joints and the arrangement of components on the board. A silver screw is visible on the right side. The component is placed on a black surface with a white ruler for scale. The ruler shows measurements in millimeters, with markings every 10 mm and sub-markings every 1 mm. The component's length is approximately 100 mm and its width is approximately 30 mm. The background is a light blue textured surface.</p>

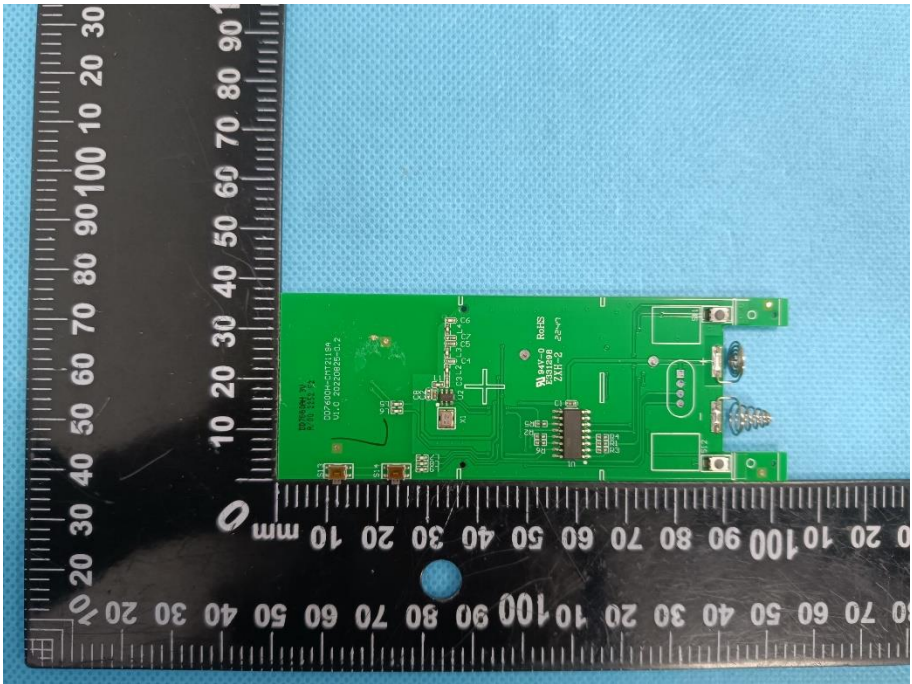
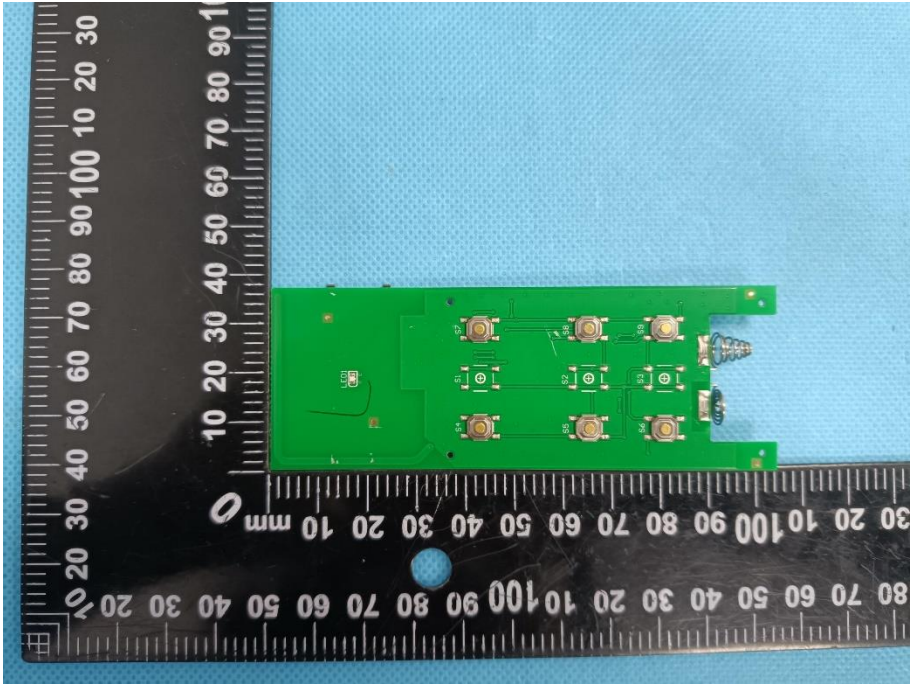
Model: DD7660AH

EUT Housing and Board View 1



EUT Housing and Board View 2

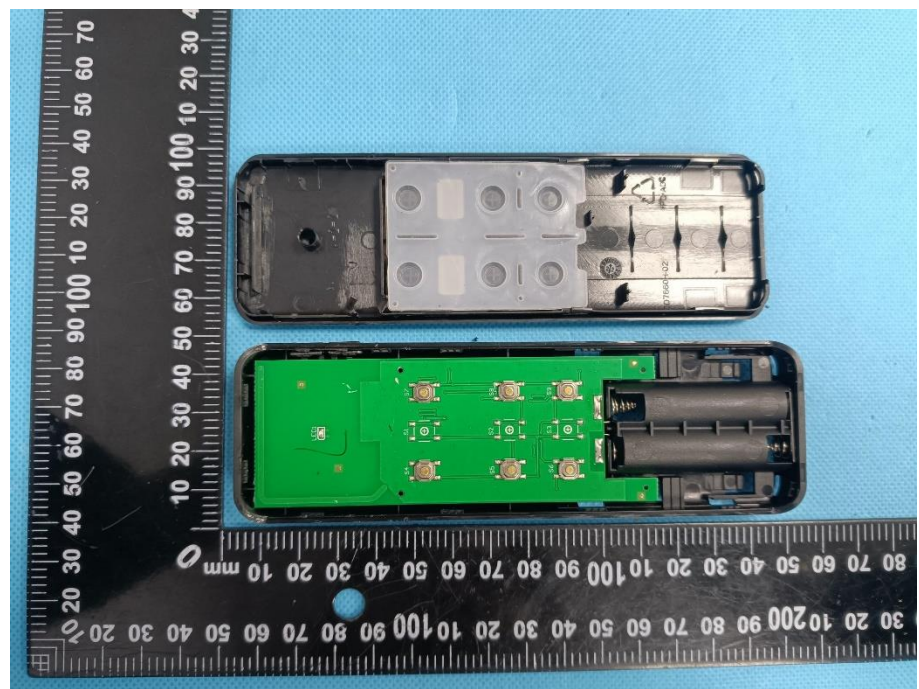


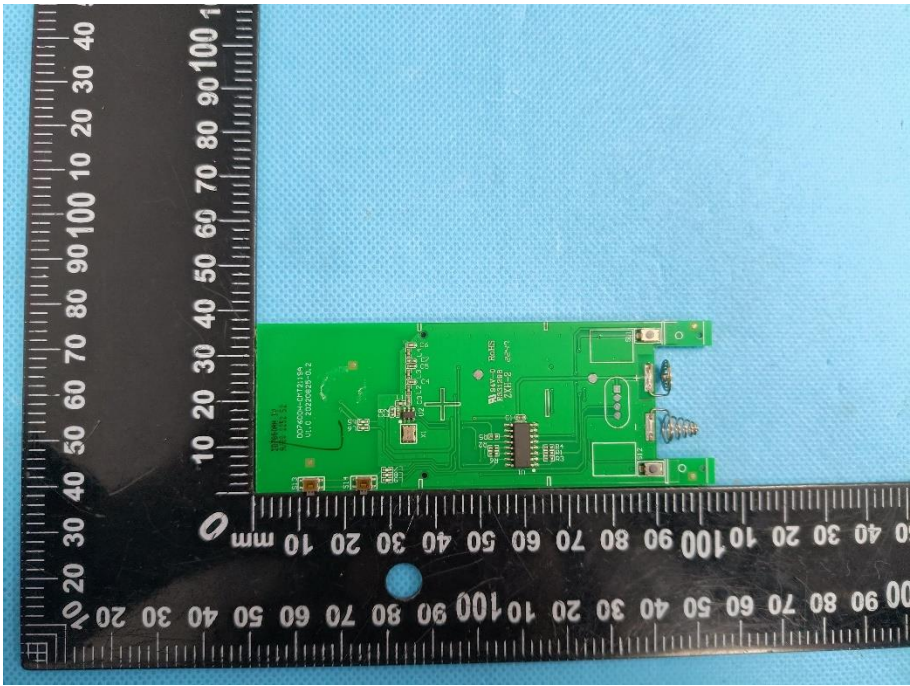
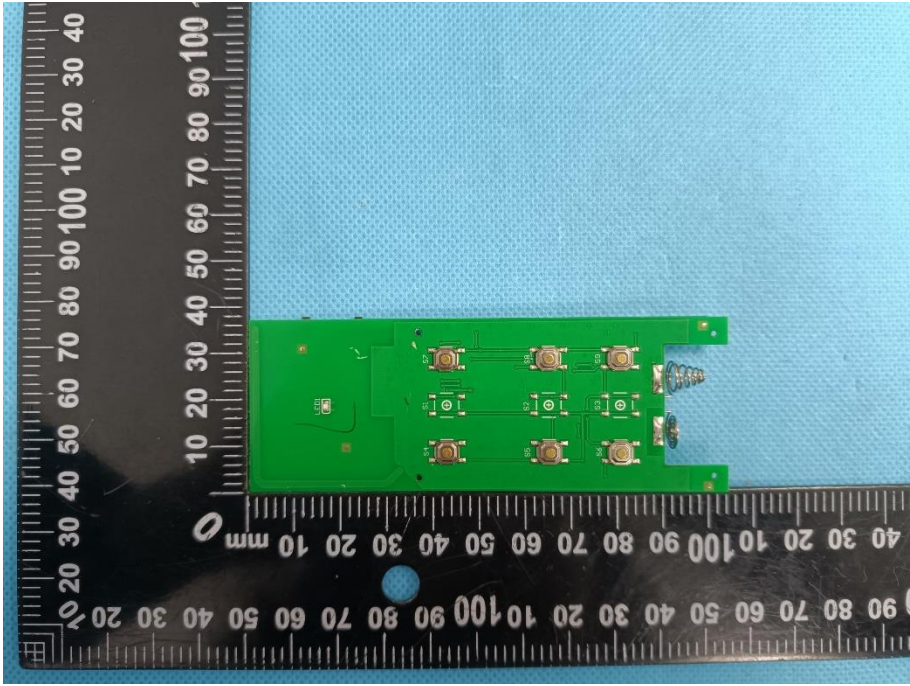
<p>Solder Board-Component View 1</p>	 <p>A photograph of a green PCB component, labeled 'View 1'. The component is rectangular and features various electronic components including a central integrated circuit (IC) with 'WALTEK' and 'ZHU-2' markings, several resistors, and a small blue component. It is placed on a black ruler with white markings in millimeters. The ruler shows the component is approximately 100 mm long and 30 mm wide. The background is a blue textured surface.</p>
<p>Solder Board-Component View 2</p>	 <p>A photograph of the same green PCB component, labeled 'View 2'. This view shows the component from a different angle, highlighting the solder joints and the arrangement of components on the board. The component is placed on the same black ruler with white markings. The ruler shows the component is approximately 100 mm long and 30 mm wide. The background is a blue textured surface.</p>

EUT Housing and Board View 1



EUT Housing and Board View 2



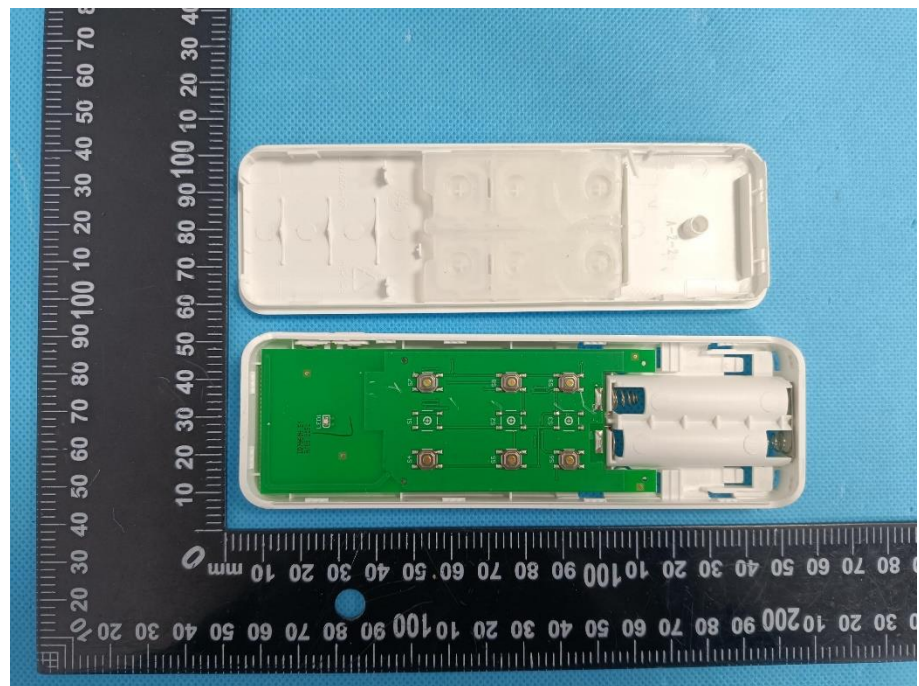
<p>Solder Board-Component View 1</p>	 <p>A photograph of a green printed circuit board (PCB) component, labeled 'Solder Board-Component View 1'. The board is rectangular and populated with various electronic components, including a central integrated circuit (IC) with a visible pin grid array (PGA), several resistors, and capacitors. The board is placed on a black surface with a white ruler for scale. The ruler shows measurements in millimeters, with markings every 10 mm and sub-markings every 1 mm. The board is oriented vertically, with the ruler placed horizontally below it. The background is a light blue textured surface.</p>
<p>Solder Board-Component View 2</p>	 <p>A photograph of the same green PCB component, labeled 'Solder Board-Component View 2'. This view shows the reverse side of the board, highlighting the solder joints and the underside of the components. The board is placed on a black surface with a white ruler for scale, similar to View 1. The ruler shows measurements in millimeters. The background is a light blue textured surface.</p>

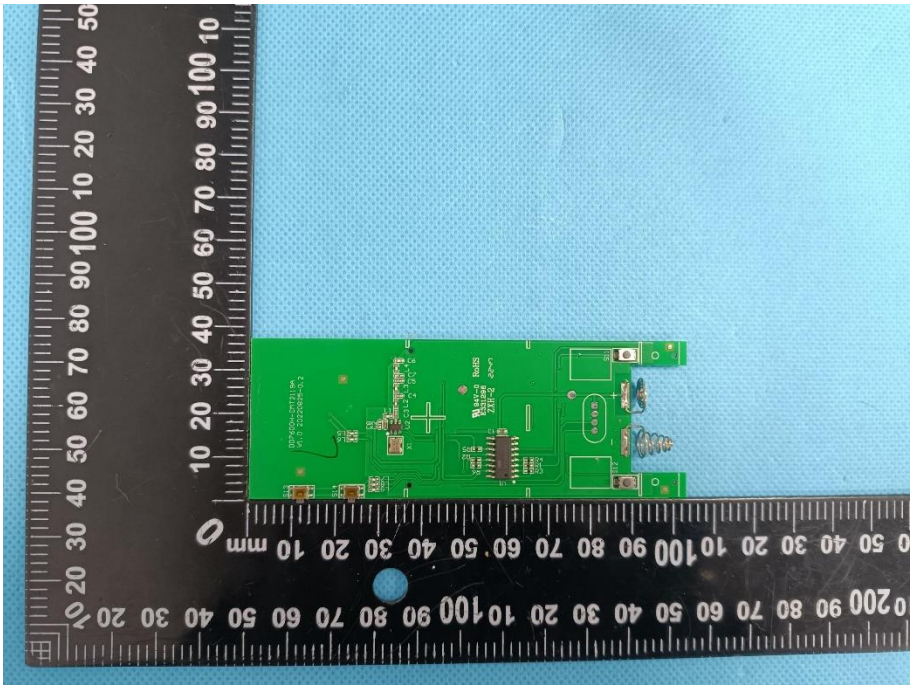
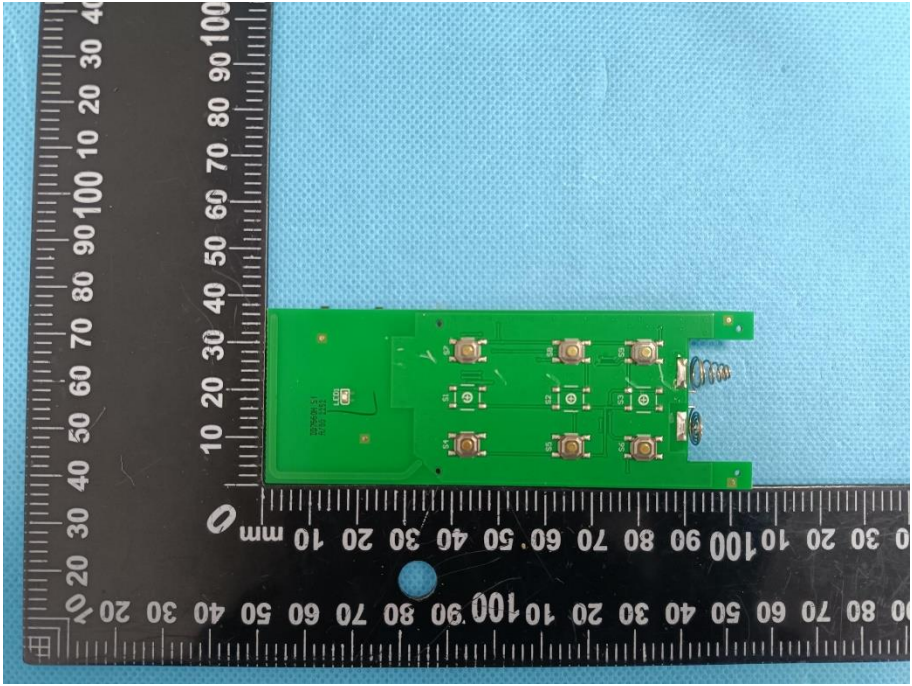
Model: DD7660H

EUT Housing and Board View 1



EUT Housing and Board View 2

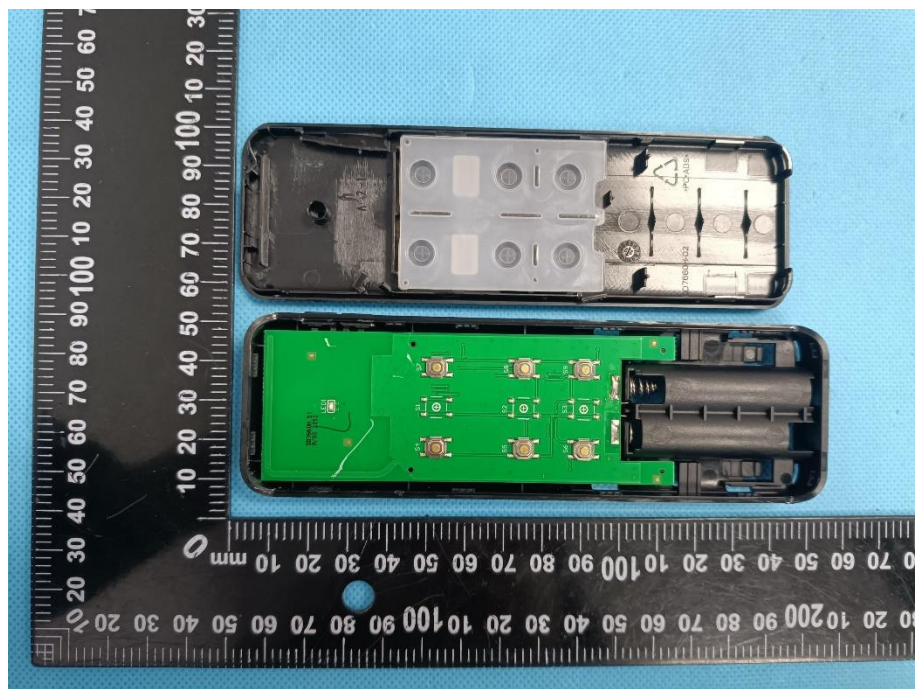


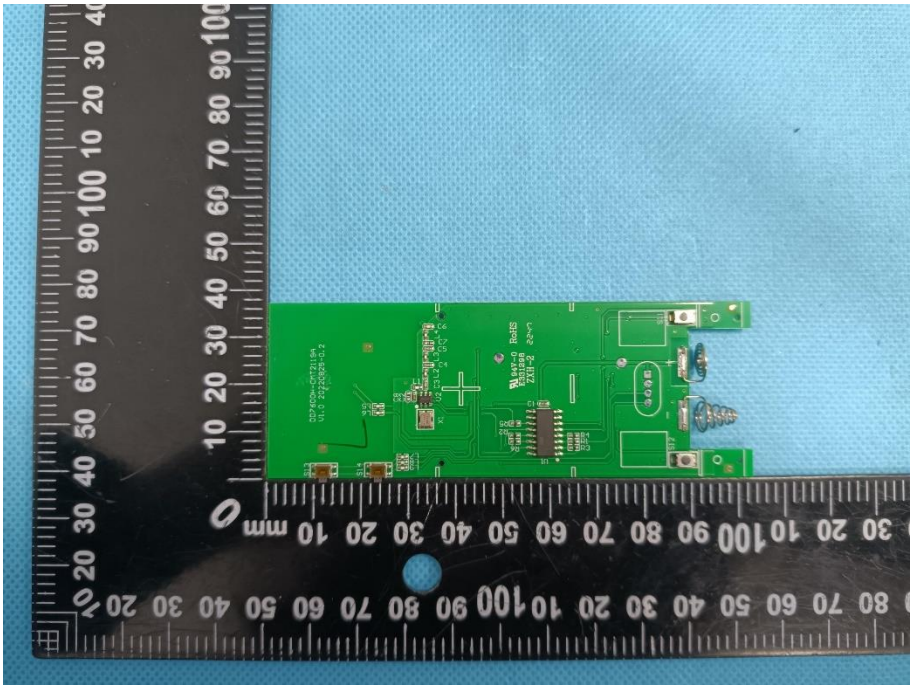
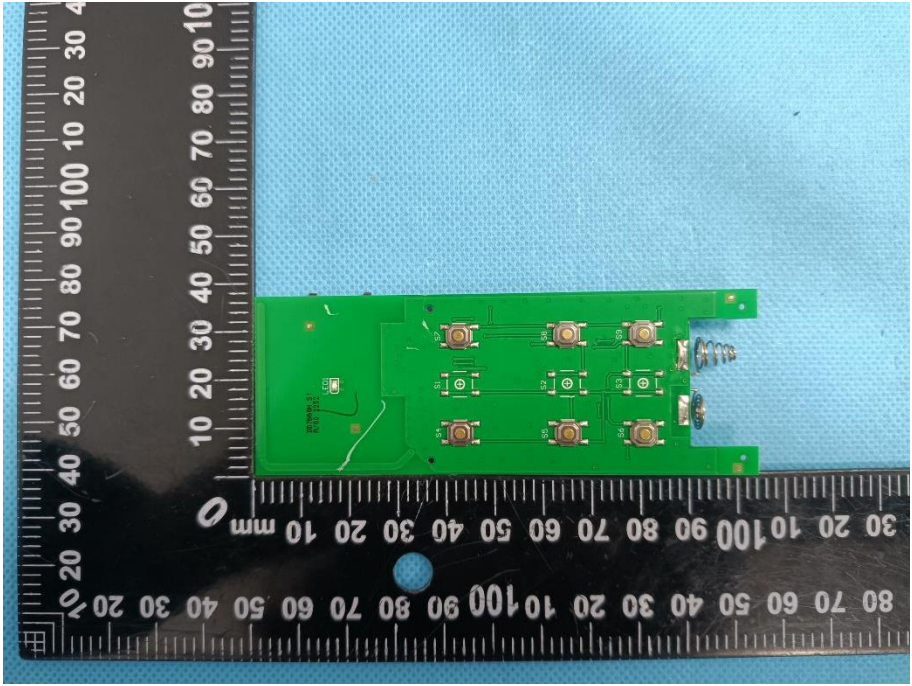
<p>Solder Board-Component View 1</p>	 <p>A photograph of a green PCB component, labeled 'View 1'. The component is rectangular and features various electronic components including a microcontroller, several resistors, and a small integrated circuit. It is placed on a blue textured surface next to a black ruler with white markings in millimeters. The ruler shows the component is approximately 100 mm long and 30 mm wide.</p>
<p>Solder Board-Component View 2</p>	 <p>A photograph of the same green PCB component, labeled 'View 2'. This view shows the component from a different angle, highlighting the solder joints and the arrangement of components on the reverse side. It is placed on a blue textured surface next to a black ruler with white markings in millimeters. The ruler shows the component is approximately 100 mm long and 30 mm wide.</p>

EUT Housing and Board View 1



EUT Housing and Board View 2



<p>Solder Board-Component View 1</p>	 <p>A photograph of a green PCB component, labeled 'View 1'. The component is rectangular and features various electronic components including a microcontroller, several resistors, and a spring. It is placed on a blue textured surface next to a black ruler with white markings. The ruler shows measurements in millimeters, with the component's length being approximately 100 mm. The text 'WALTEK BOARD' is visible on the PCB.</p>
<p>Solder Board-Component View 2</p>	 <p>A photograph of the same green PCB component, labeled 'View 2'. This view shows the component from a different angle, highlighting the solder joints and the arrangement of components on the board. It is placed on a blue textured surface next to a black ruler with white markings. The ruler shows measurements in millimeters, with the component's length being approximately 100 mm. The text 'WALTEK BOARD' is visible on the PCB.</p>

