

WARNING

This device complies with Part 15 of the FCC Rules / Innovation, Science and Economic Development Canada's licence-exempt RSS standard(s). Operation is subject to the following two conditions: (1) this device may not cause harmful interference, and (2) this device must accept any interference received, including interference that may cause undesired operation.

Changes or modifications not expressly approved by the party responsible for compliance could void the user's authority to operate the equipment.

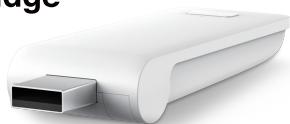
This equipment has been tested and found to comply with the limits for a Class B digital device, pursuant to part 15 of the FCC Rules. These limits are designed to provide reasonable protection against harmful interference in a residential installation. This equipment generates uses and can radiate radio frequency energy and, if not installed and used in accordance with the instructions, may cause harmful interference to radio communications. However, there is no guarantee that interference will not occur in a particular installation. If this equipment does cause harmful interference to radio or television reception, which can be determined by turning the equipment off and on, the user is encouraged to try to correct the interference by one or more of the following measures:

- Reorient or relocate the receiving antenna.
- Increase the separation between the equipment and receiver.
- Connect the equipment into an outlet on a circuit different from that to which the receiver is connected.
- Consult the dealer or an experienced radio/TV technician for help.



Quick Start Guide for Connector Mini Bridge

Model: DD1554E



Product
Certification



Mini Bridge allows user to link their motorized shutters, blinds, and curtains into Wi-Fi network, enabling control via smart APP and interaction with other IoT products.

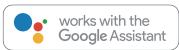
Step 1 Download APP

Please scan below QR code.



Step 2

Please scan below QR code to learn more about link up Mini Bridge with home Wi-Fi router, setup Connector APP, and establish connection with other IoT applications.





Connector

版本: 2.7.0.1031 | 大小:38.1MB

应用权限

23项权限 5项隐私相关



Connector

适用于 Android 设备



Connector

适用于 Android 设备



安装

立即安装

应用信息

大小

36.3 MB

更新时间

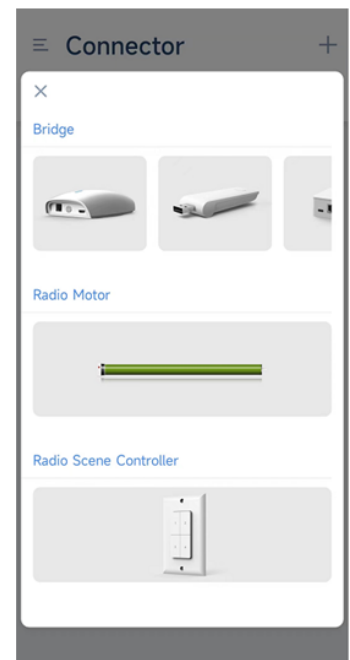
2页前

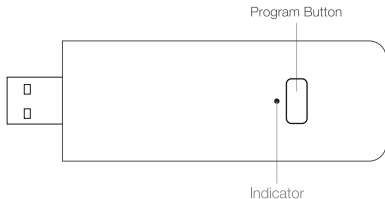
Sign In

[Forgot Password](#)

Sign In

Sign up



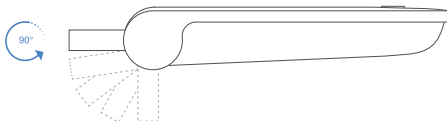


Program / Pairing:

Press and hold program button for about 2 seconds, then release until the LED blinks purple.

Reset:

Press and hold program button for about 10 seconds, then release until the LED blinks red.



Product Parameter

Indoor use only

Wi-Fi: 2.4GHz (802.11b/n/g)

Power Input:

DC 5V/1A (USB Type-A)

*Can only be used with a power adapter, not for computer equipment (including laptop/notebook/netbook)

Radio frequency: 433.92MHz

Working temperature: 0°C ~ 40 °C

Dimension(mm): L83.8 * W30.7 * H13.9

Status Indicator

Color

 Constant Blue

 Slow Flashing Red

 Slow Flashing Yellow

 Quick Flashing Red

 Slow Flashing Purple

 Slow Flashing Green

Meaning

Working fine

Wi-Fi is disconnected

Wi-Fi is connected

Bridge reset

Pairing underway

Upgrade in progress

Duration

Constant

Continuously till status change

Continuously till status change

5 times

Continuously till status change

Continuously till status change