

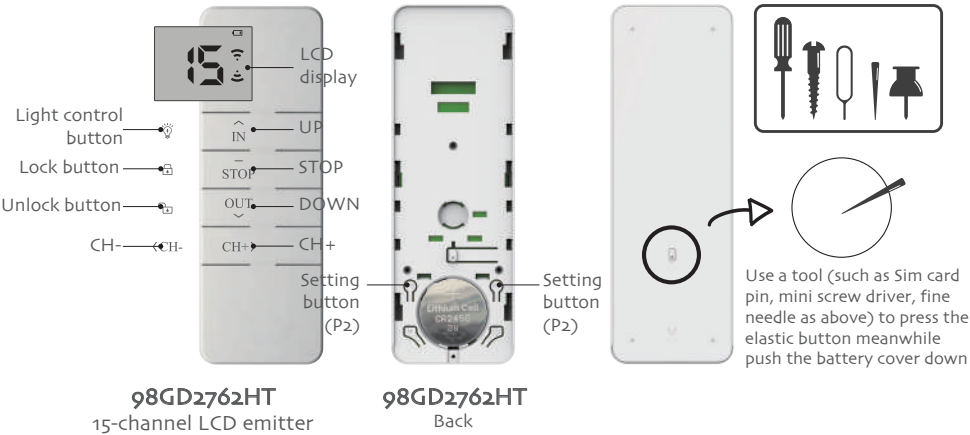
# DD2762HT

## Emitter Instruction

Version: A/00

### Instruction Of Buttons

Note: The emitters is black.



### Technical specification

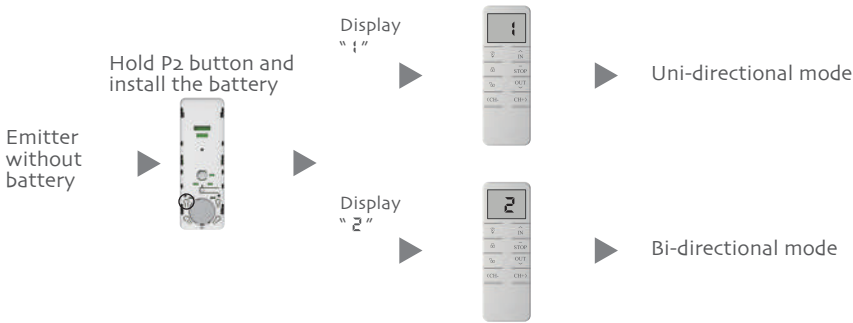
Battery: 3V (CR2450)	Battery life: >2 years
Working temperature: -10℃~50℃	Radio frequency: 433.92MHz
Transmitting power: 10 mW	Radio range: 200 meters outdoor, 35 meters indoor

### Warning

- 1, Emitter couldn't expose to moisture or be struck heavily, or else the emitter life will be affected.
- 2, If the emitter is not so sensitive or the radio range becomes shorter, pls check whether to change the battery.
- 3, If the voltage is less than 2.65V, there will be a low voltage indication.
- 4, It's forbidden to use different type battery to avoid any dangerous risk.
- 5, Dispose of used batteries properly.

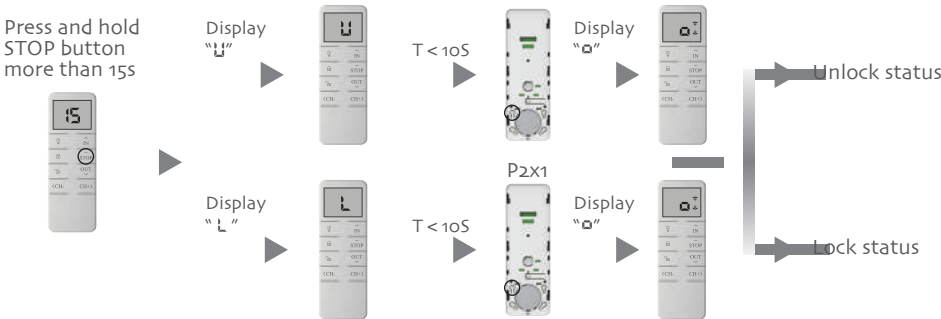
### Switch between Uni-/ Bi-directional Mode

- Note: 1,A channel is the same operation as B channel.  
2,The factory default mode is Bi-directional mode, repeat the same operation to switch the mode circulary.



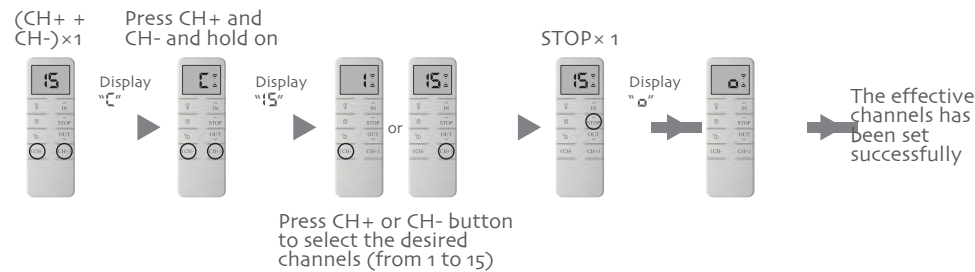
### Lock/Unlock Combo-key

- Note: 1,A channel is the same operation as B channel.  
2,If there is no operation for 10 seconds, it will automatically exit the setting status.  
3,The factory default is unlock status, repeat same operation to switch status circulary.  
4,When the combination buttons are locked, if you press the combination buttons, the emitter won't send any signal and LED won't flash.  
5,Only the transmitting code will be affected if the combination buttons are locked.



### Set Number of Channels

- Note: 1,In the setting status, press OPEN or CLOSE button to exit quickly.  
2,Repeat the same process if you want to adjust the number of channels.



### RF exposure statement

This equipment complies with the FCC radiation exposure limits set forth for an uncontrolled environment. This transmitter must not be co-located or operating in conjunction with any other antenna or transmitter.

### FCC Warning

This device complies with Part 15 of the FCC Rules. Operation is subject to the following two conditions:  
(1) This device may not cause harmful interference, and (2) this device must accept any interference received, including interference that may cause undesired operation.

Note: This equipment has been tested and found to comply with the limits for a Class B digital device, pursuant to part 15 of the FCC Rules. These limits are designed to provide reasonable protection against harmful interference in a residential installation. This equipment generates, uses and can radiate radio frequency energy and, if not installed and used in accordance with the instructions, may cause harmful interference to radio communications. However, there is no guarantee that interference will not occur in a particular installation. If this equipment does cause harmful interference to radio or television reception, which can be determined by turning the equipment off and on, the user is encouraged to try to correct the interference by one or more of the following measures:  
—Reorient or relocate the receiving antenna.  
—Increase the separation between the equipment and receiver.  
—Connect the equipment into an outlet on a circuit different from that to which the receiver is connected.  
—Consult the dealer or an experienced radio/TV technician for help.

NOTE 2: Any changes or modifications to this unit not expressly approved by the party responsible for compliance could void the user's authority to operate the equipment.