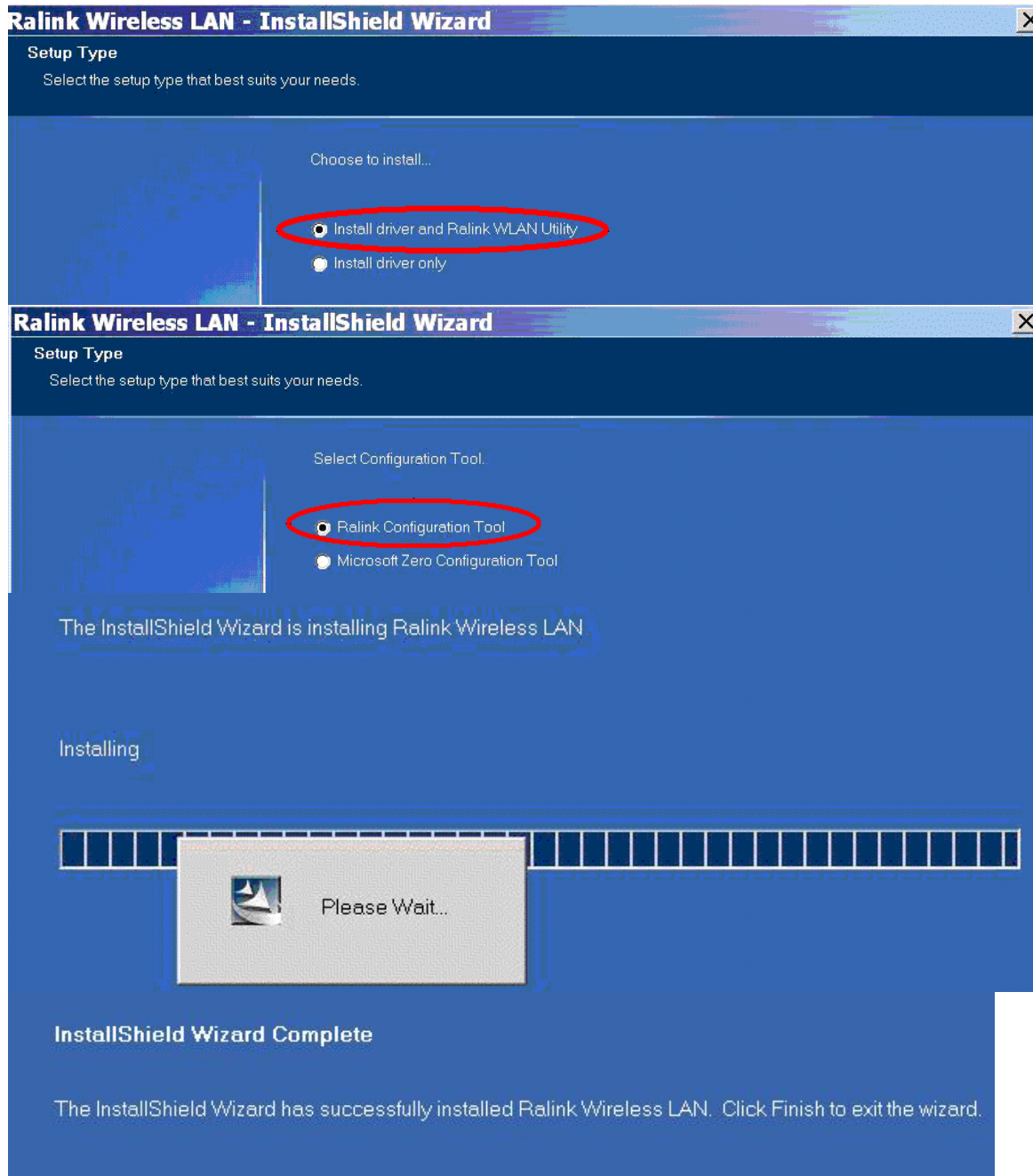


Quick User Manual Guide

Step 1: RaUI (Ralink Utility) Installation



You can double click a small Ralink icon appears in the notifications area of the taskbar to maximize the dialog box or you may also click the mouse's right button to close RaUI.

Step 2: Start RaUI (Ralink Utility)

When starting RaUI, the system will connect to the AP with best signal strength without setting a profile or matching a profile setting. The AP list includes most used fields, such as SSID, network type, channel used, wireless mode, security status and the signal percentage.

The screenshot shows the RaUI Network tab. At the top, there are navigation icons for Network, Advanced, Statistics, WMM, WPS, Radio on/off, About, and Help. Below the navigation bar, there are sorting options: Sorted by >> SSID, Channel, Signal, and a checkbox for Show dBm. The AP List table is as follows:

SSID	Channel	Wireless Mode	Security	Signal	Signal Strength
corega-ryan	1	b g n	🔒	15%	Low
dlink	6	b g n	🔒	15%	Low
Emallfly_02	11	b g n	🔒	34%	Medium
hong	6	b g n	🔒	24%	Medium
ken_chen	1	b g n	🔒	15%	Low
SMC	6	b g n	🔒	44%	High

Buttons at the bottom of the AP list: Rescan, Add to Profile, Connect.

Connection details for SMC:

- Status >> SMC <-> 00-13-F7-8E-63-93
- Extra Info >> Link is Up [TxPower:100%]
- Channel >> 6 <-> 2437 MHz; central channel : 6
- Authentication >> Open
- Encryption >> NONE
- Network Type >> Infrastructure
- IP Address >> 192.168.2.102
- Sub Mask >> 255.255.255.0
- Default Gateway >> 192.168.2.1

Performance metrics:

- Link Quality >> 88%
- Signal Strength 1 >> 54%
- Signal Strength 2 >> 10%
- Noise Strength >> 26%

Transmit/Receive statistics:

- Transmit: Link Speed >> 26.0 Mbps, Throughput >> 0.000 Kbps
- Receive: Link Speed >> 39.0 Mbps, Throughput >> 46.084 Kbps

1. Functional Section:

Profile page: The list keeps a record of your favorite wireless settings or others hotspots. You can activate either one on the preference list for quick connection.

The screenshot shows the RaUI Profile and System Config tabs. The Profile tab is active, showing a Profile List with one entry: PROF1 (SMC). The Activate button is circled in red. The System Config tab is also shown, with the System Config button circled in red. The configuration details for PROF1 are:

- Profile Name >> PROF1
- SSID >> SMC
- Network Type >> Infrastructure
- Authentication >> Open
- Encryption >> None
- Use 802.1x >> NO
- Tx Power >> Auto
- Channel >> Auto
- Power Save Mode >> CAM (selected), PSM
- RTS Threshold >> 0 (slider to 2347)
- Fragment Threshold >> 256 (slider to 2346)

Advanced page:

Network Advanced Statistics WMM WPS Radio on/off About Help

Wireless mode >> 2.4G

Enable CCX (Cisco Compatible eXtensions)

Turn on CCKM

Enable Radio Measurements

Non-Serving Channel Measurements limit

250 ms(0-2000)

Enable TX Burst

Enable TCP Window Size

Fast Roaming at -70 dBm

Show Authentication Status Dialog

Select Your Country Region Code

11B/G >> 5: CH1-14

Apply

Status >> 5: CH1-14

Extra Info >> 6: CH3-9

Channel >> 7: CH5-13

Authentication >> Open

Link Quality >> 90%

Signal Strength 1 >> 55%

Signal Strength 2 >> 5%

Noise Strength >> 26%

Statistics page:

Network Advanced Statistics WMM WPS Radio on/off About Help

Transmit Receive

Frames Received Successfully = 797

Frames Received With CRC Error = 4407

Frames Dropped Due To Out-of-Resource = 0

Duplicate Frames Received = 0

Reset Counter

WMM page:

Network Advanced Statistics WMM WPS Radio on/off About Help

WMM Setup Status

WMM >> Enabled Power Save >> Enabled Direct Link >> Enabled

WMM Enable

WMM - Power Save Enable

AC_BK AC_BE AC_VI AC_VO

Direct Link Setup Enable

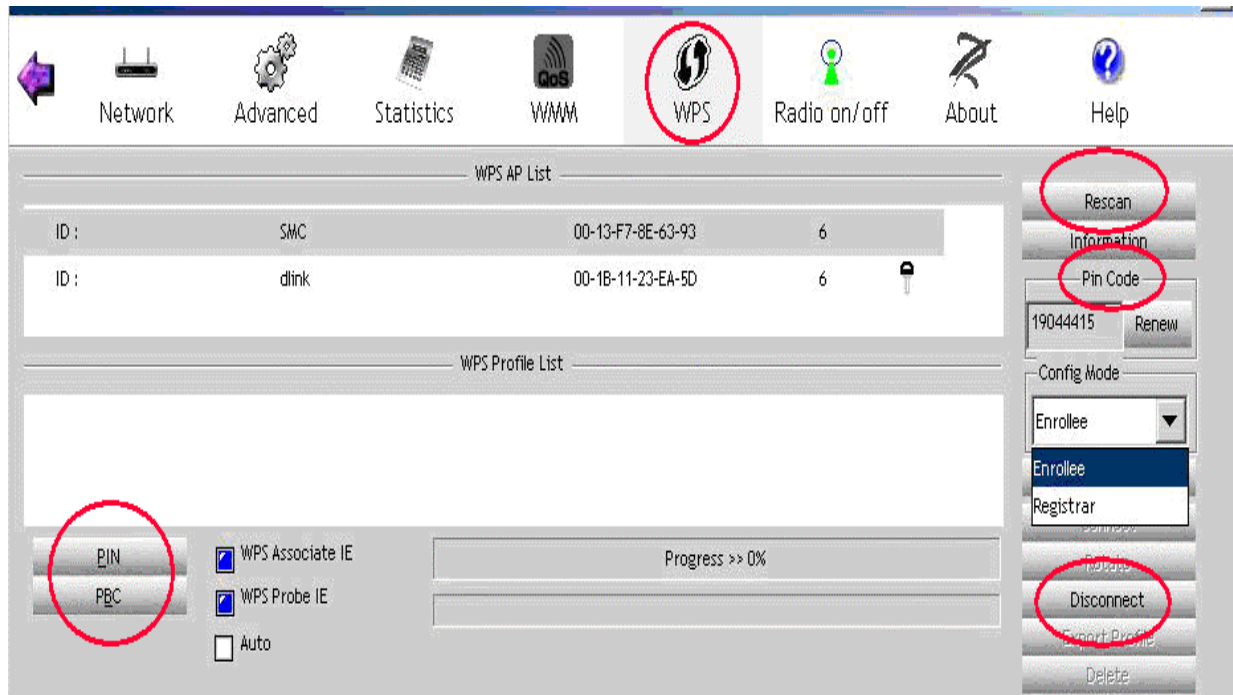
MAC Address >> [][][][][][]

Timeout Value >> 60 sec

Apply

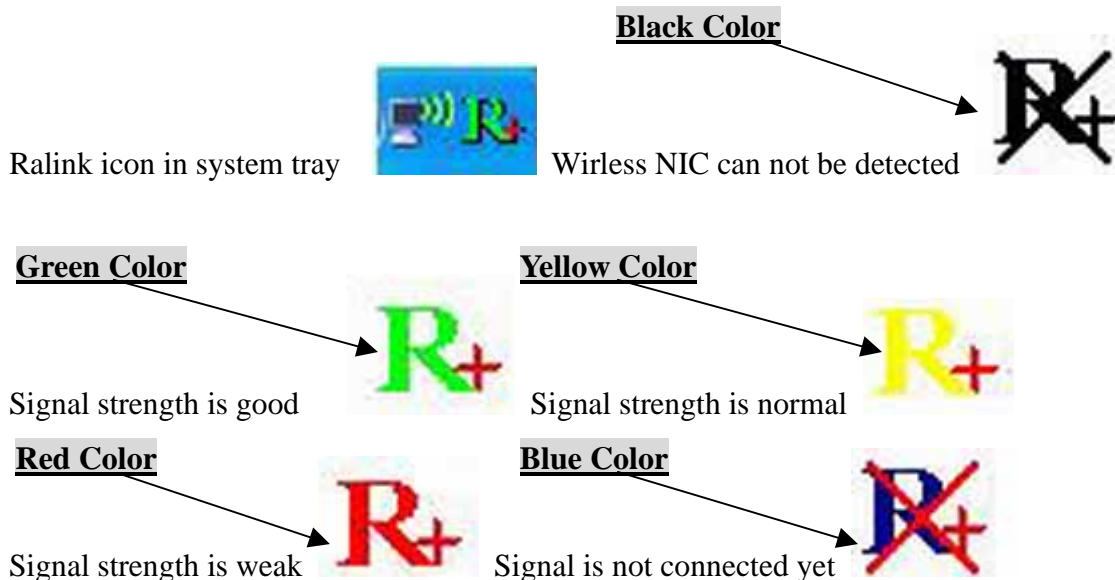
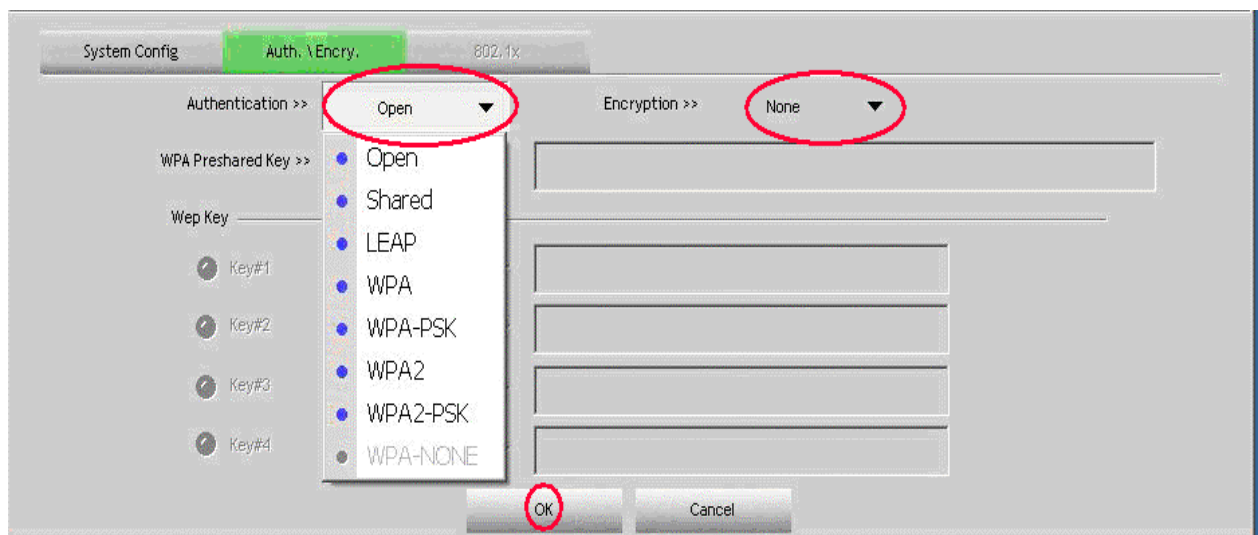
Tear Down

WPS page:



2. Status Section:

Authentication Status

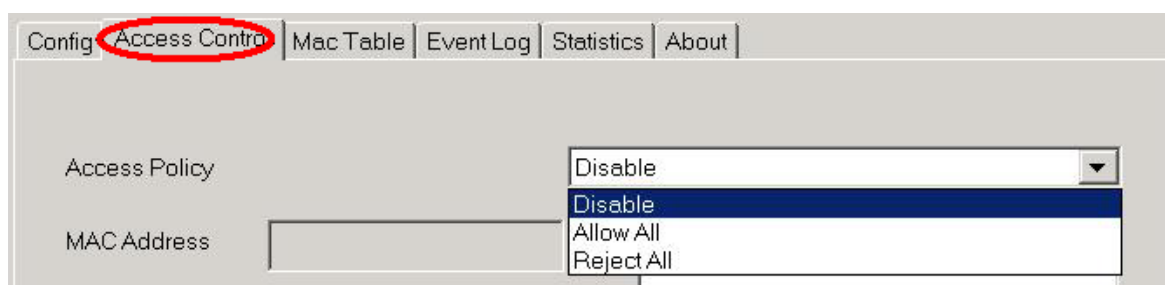
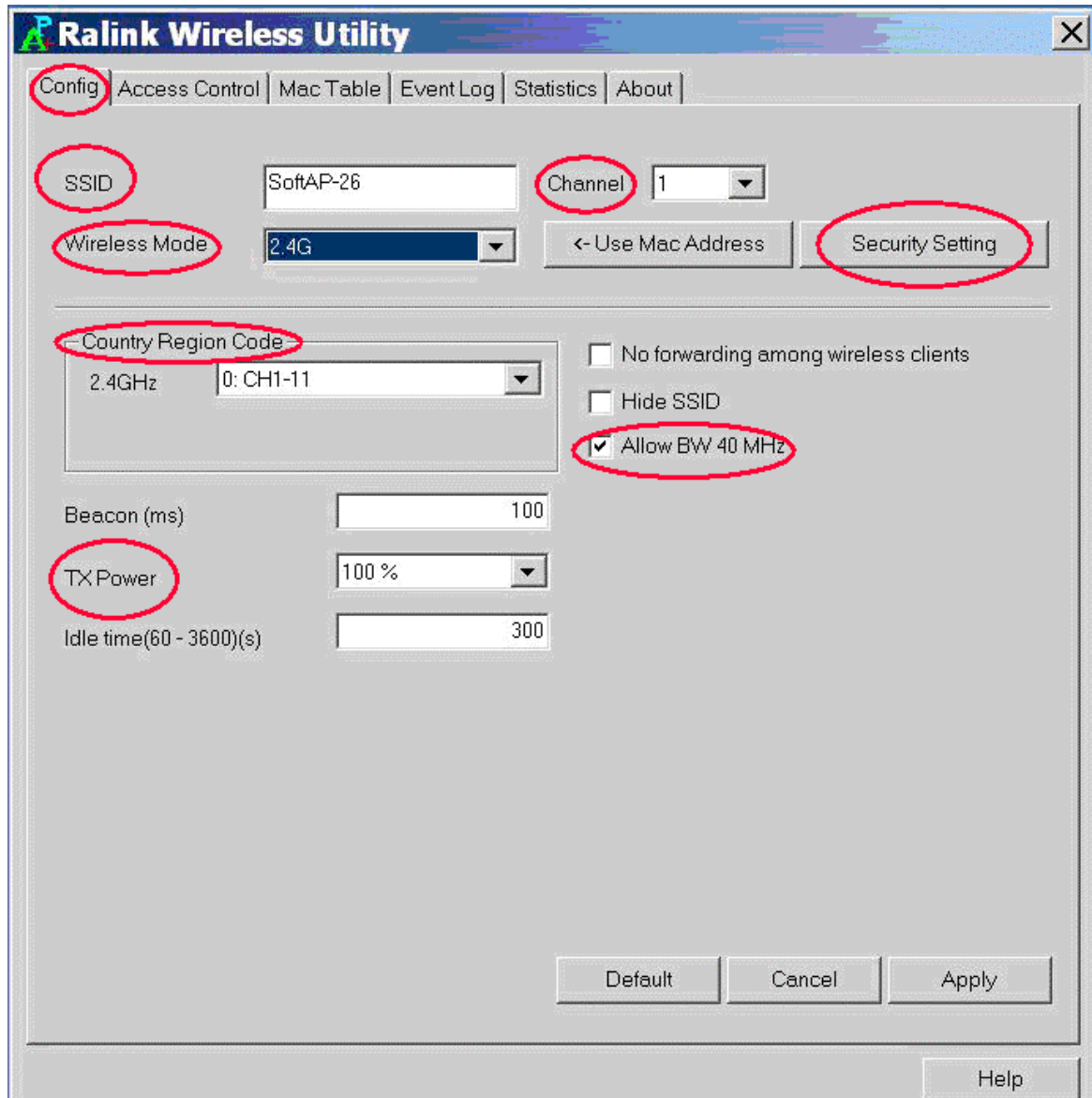


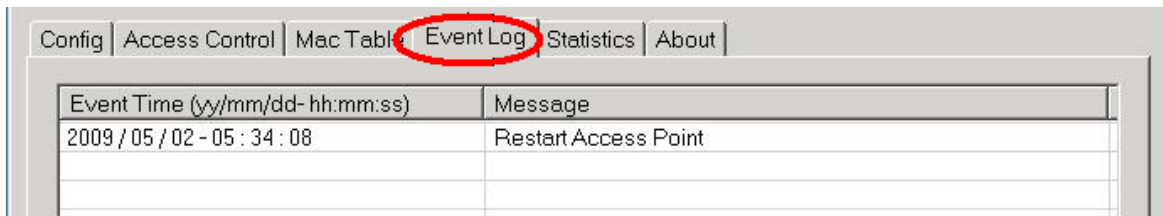
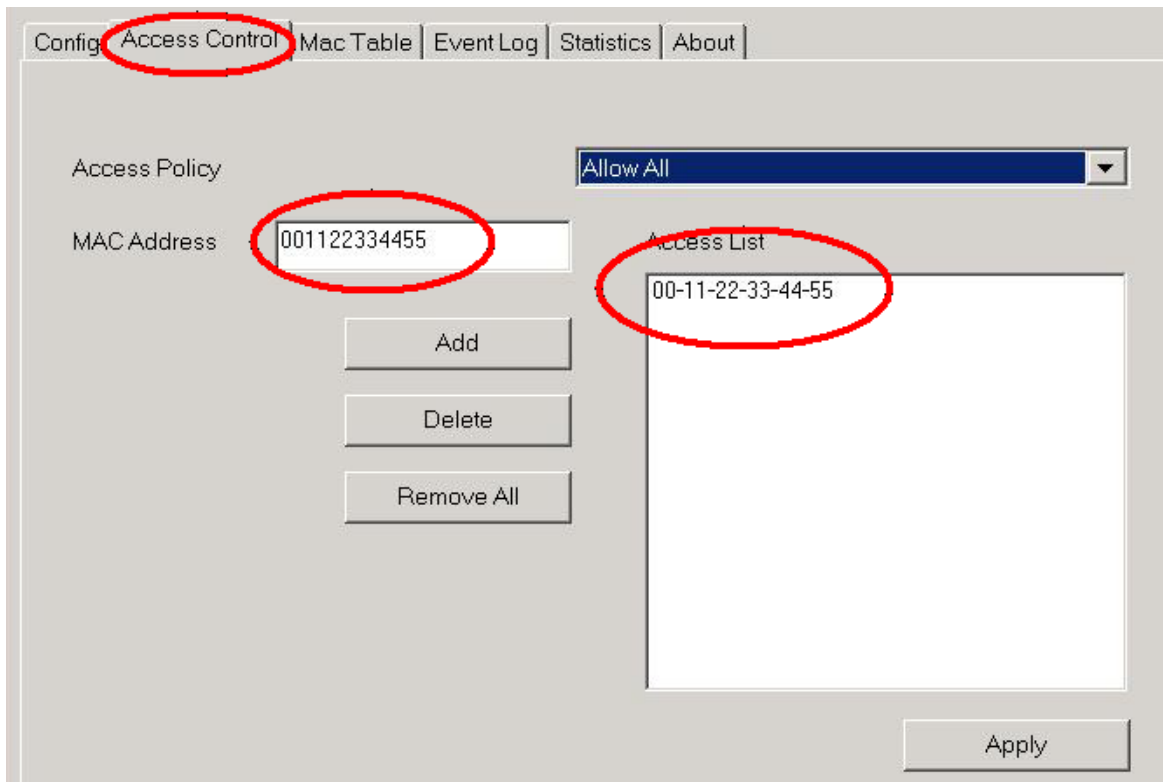
3: Software AP Mode

Click mouse's right button on Ralink icon in system tray.

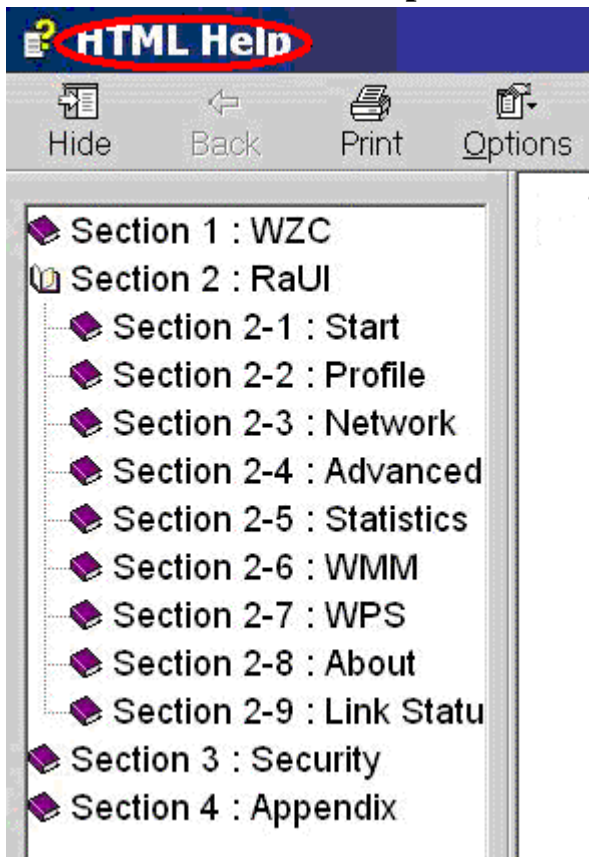


You are about to see the AP utility





4: For more information please refer to HTML Help in Help Page



This equipment has been tested and found to comply with the limits for a Class B digital device, pursuant to Part 15 of the FCC Rules. These limits are designed to provide reasonable protection against harmful interference in a residential installation. This equipment generates, uses and can radiate radio frequency energy and, if not installed and used in accordance with the instructions, may cause harmful interference to radio communications. However, there is no guarantee that interference will not occur in a particular installation. If this equipment does cause harmful interference to radio or television reception, which can be determined by turning the equipment off and on, the user is encouraged to try to correct the interference by one of the following measures:

- Reorient or relocate the receiving antenna.
- Increase the separation between the equipment and receiver.
- Connect the equipment into an outlet on a circuit different from that to which the receiver is connected.
- Consult the dealer or an experienced radio/TV technician for help.

This device complies with Part 15 of the FCC Rules. Operation is subject to the following two conditions: (1) This device may not cause harmful interference, and (2) this device must accept any interference received, including interference that may cause undesired operation.

FCC Caution: Any changes or modifications not expressly approved by the party responsible for compliance could void the user's authority to operate this equipment.

This transmitter must not be co-located or operating in conjunction with any other antenna or transmitter.

IEEE 802.11b or 802.11g operation of this product in the U.S.A. is firmware-limited to channels 1 through 11.