

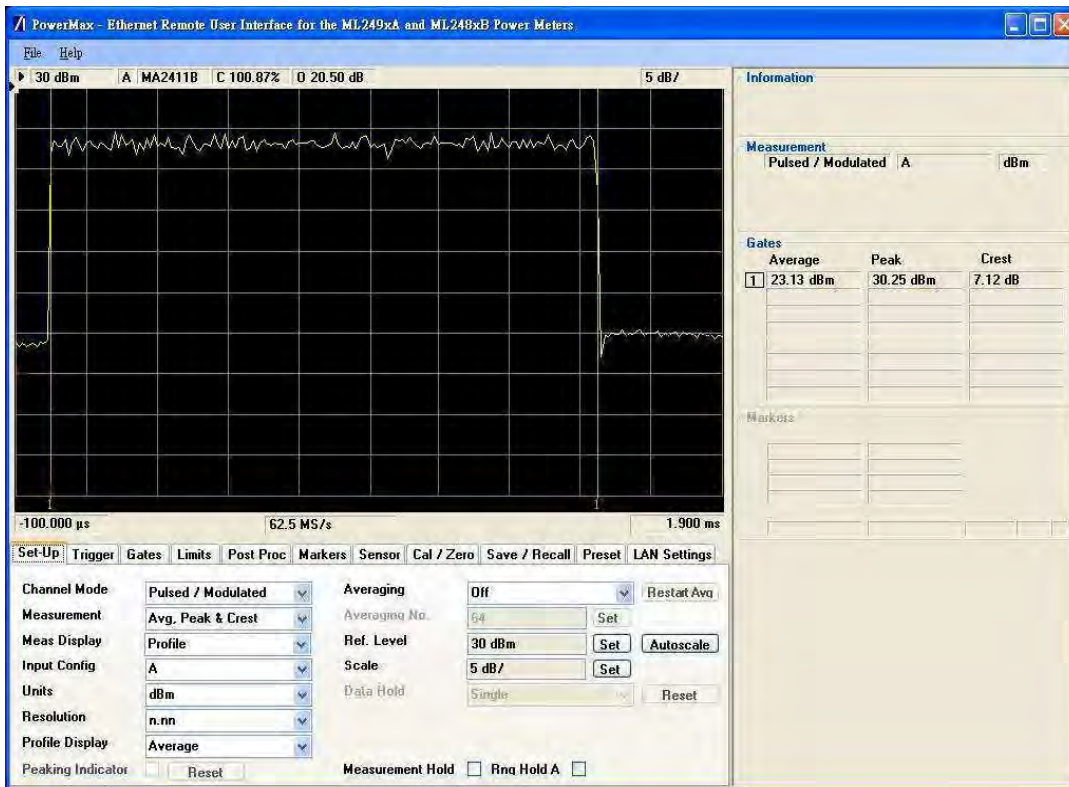
**APPENDIX C UL BURST PEAK-TO-AVERAGE POWER RATIO
FOR 5MHz BANDWIDTH / ANT 1**

Summary measured result of power measurement of ANT 1 :

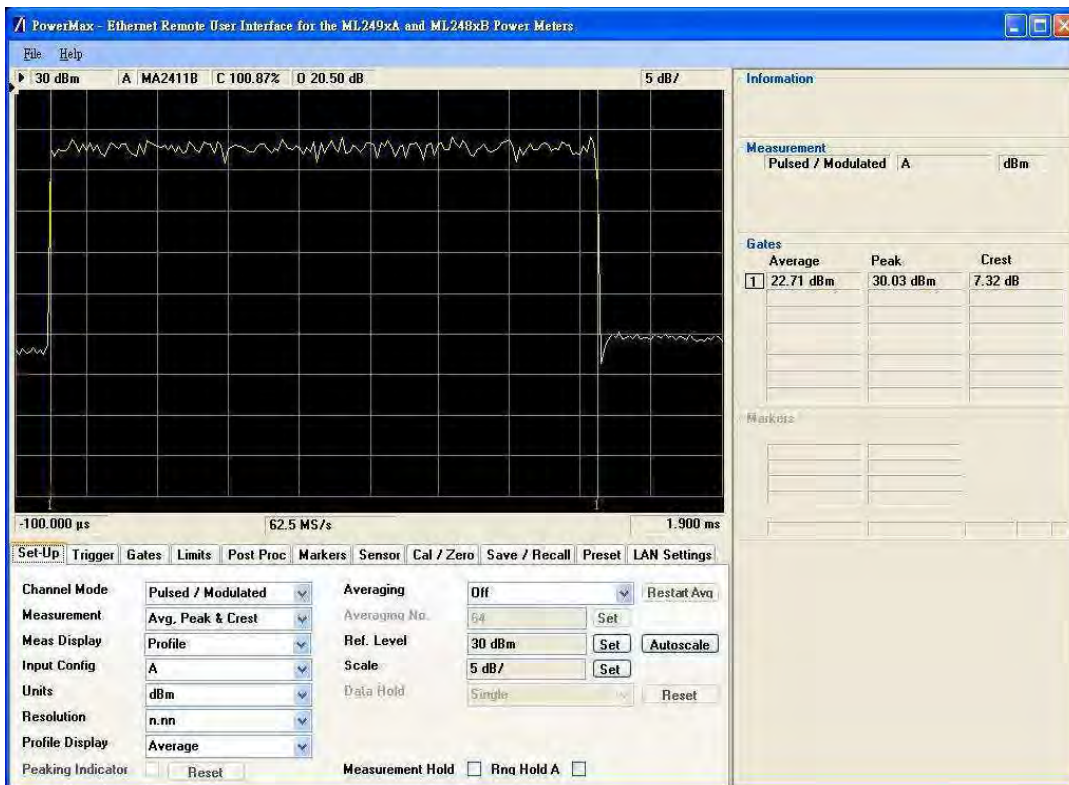
Channel BW	UL zone type / DL/UL symbols	Channel Frequency (MHz)	Conducted Power (dBm)		Peak to Average ratio (dB)	UL modulation
			AV	PK		
5MHz	PUSC / 29/18	2498.5	23.13	30.25	7.12	QPSK-1/2
		2587	22.71	30.03	7.32	
		2687.5	21.72	29.51	7.79	
		2498.5	23.13	29.86	6.73	QPSK-3/4
		2587	22.77	29.79	7.02	
		2687,5	21,74	30,07	8,33	
		2498,5	23,02	30,25	7,23	16QAM-1/2
		2587	22,86	29,66	6,8	
		2687,5	21,76	29,37	7,61	
		2498,5	23,04	30,32	7,28	16QAM-3/4
		2587	22,81	30,01	7,2	
		2687,5	21,79	29,21	7,42	

ZONE TYPE PUSC
MODULATION QPSK 1/2
BANDWIDTH 5MHz

FREQUENCY 2498.5 MHz

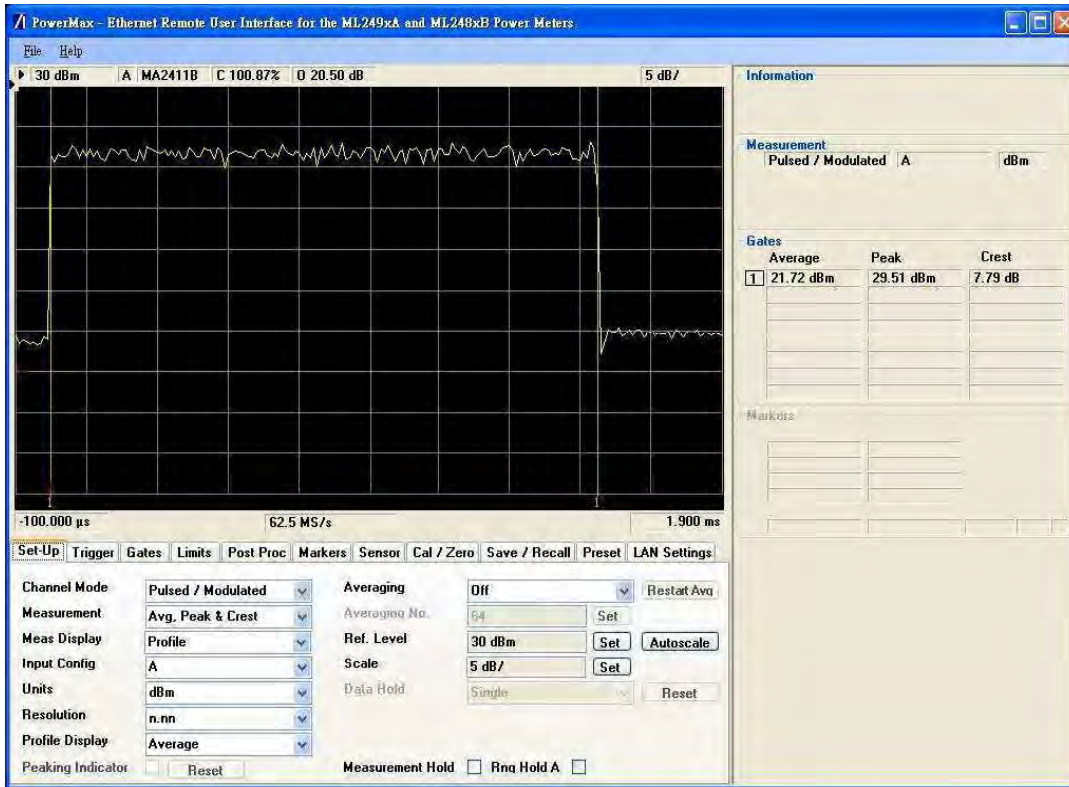


FREQUENCY 2587 MHz



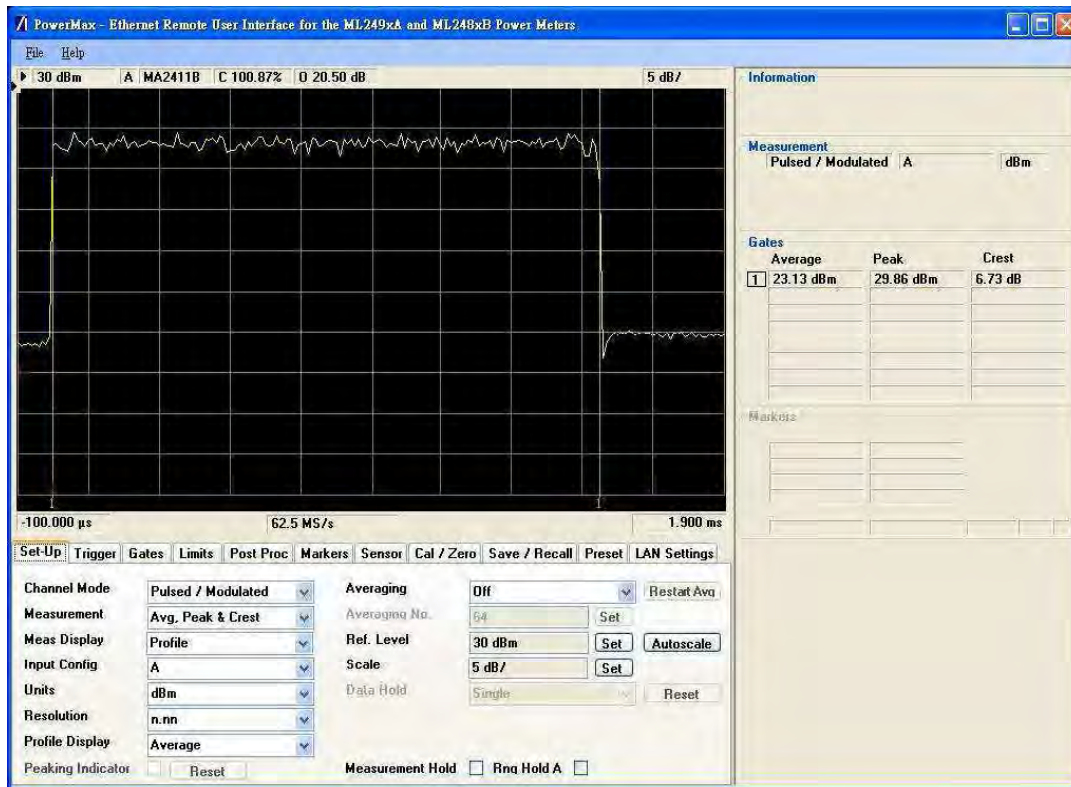
ZONE TYPE PUSC
MODULATION QPSK 1/2
BANDWIDTH 5MHz

FREQUENCY 2687.5 MHz

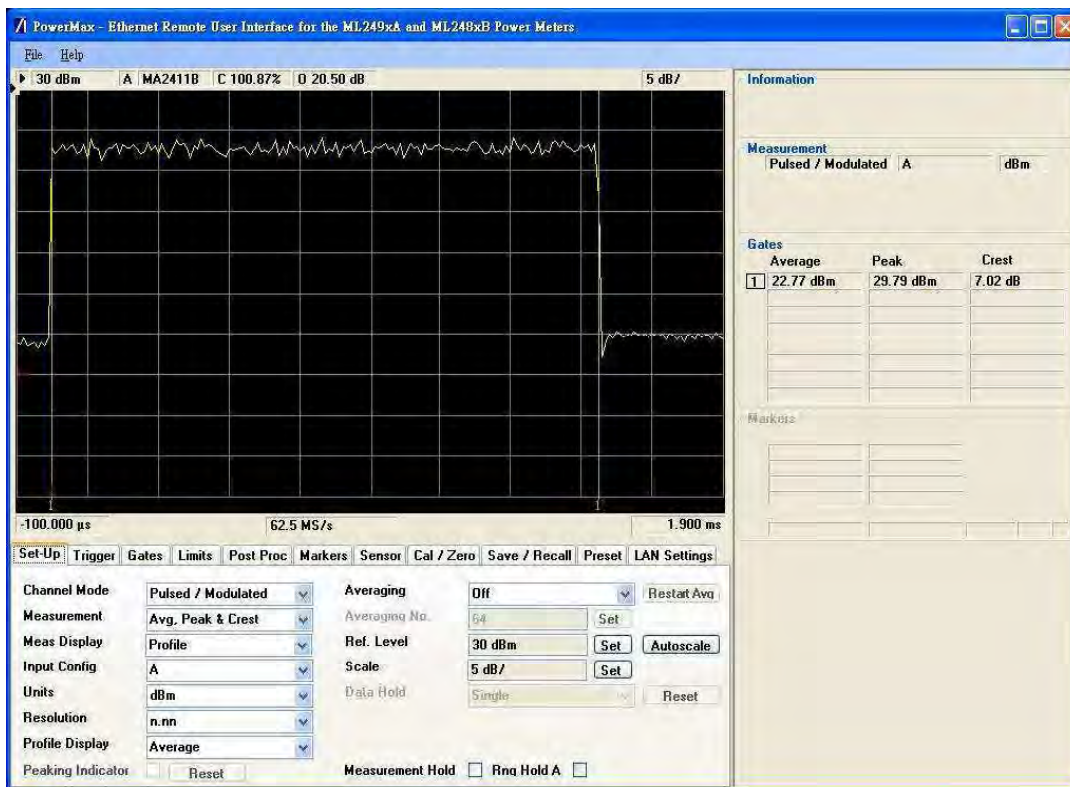


ZONE TYPE PUSC
MODULATION QPSK 3/4
BANDWIDTH 5MHz

FREQUENCY 2498.5 MHz

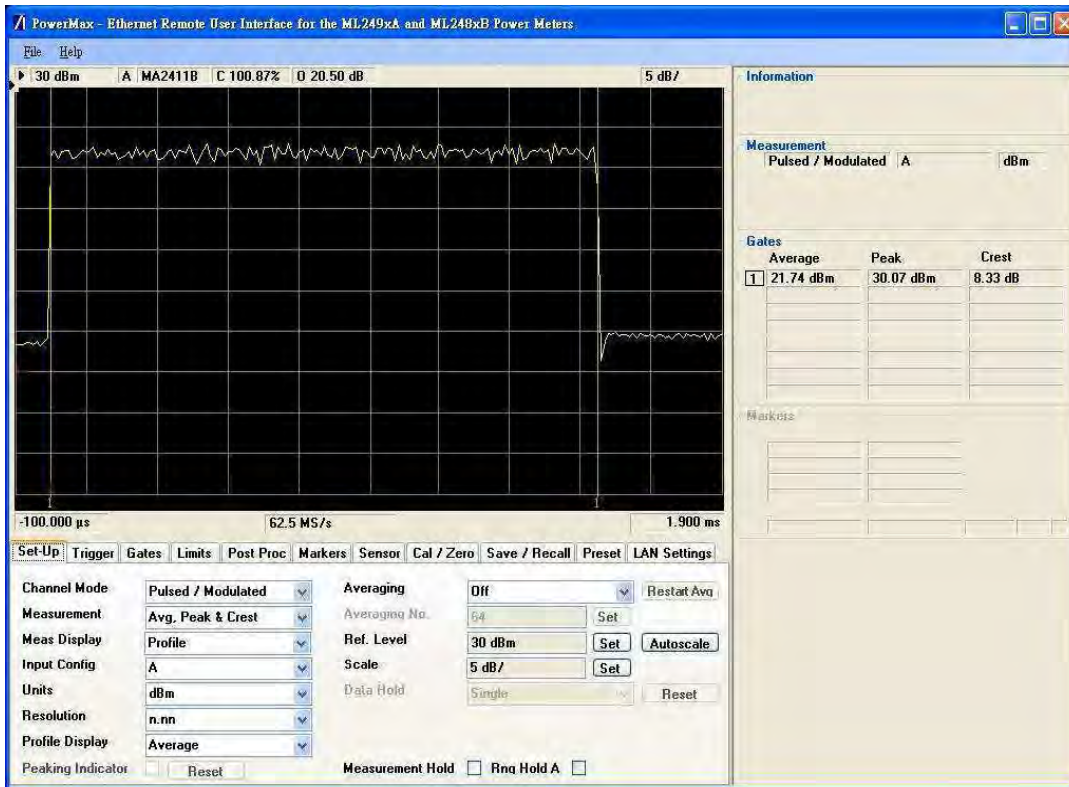


FREQUENCY 2587 MHz



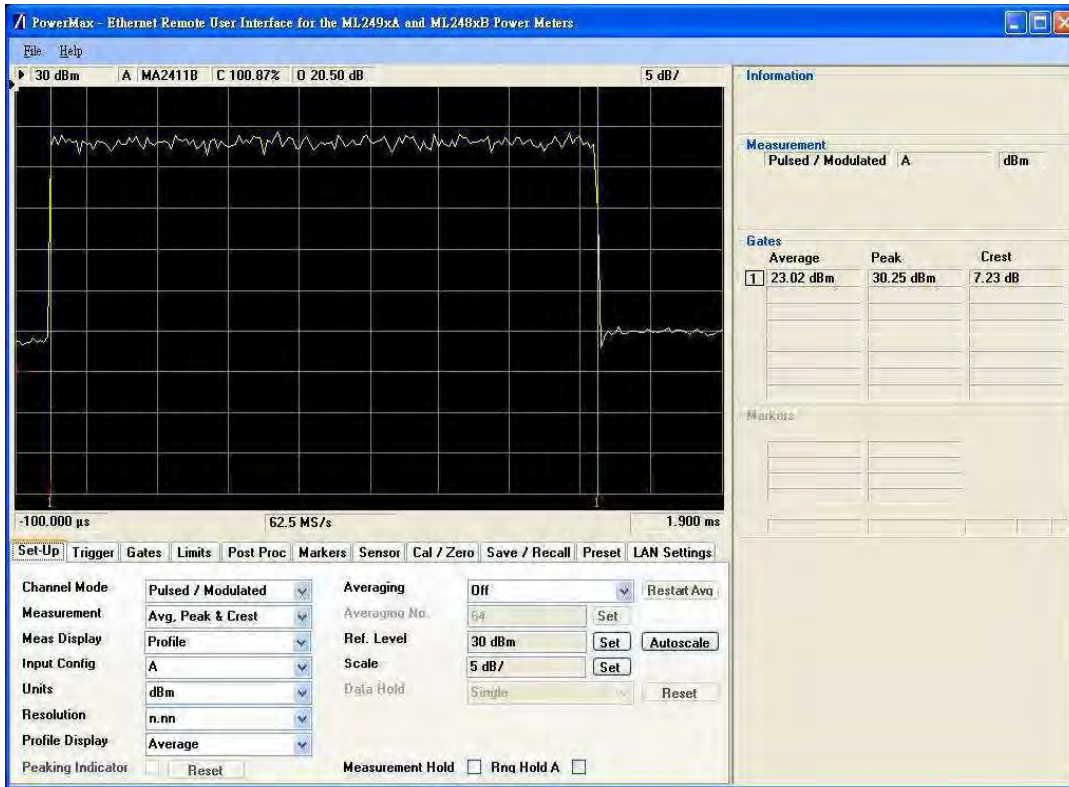
ZONE TYPE PUSC
MODULATION QPSK 3/4
BANDWIDTH 5MHz

FREQUENCY 2687.5 MHz

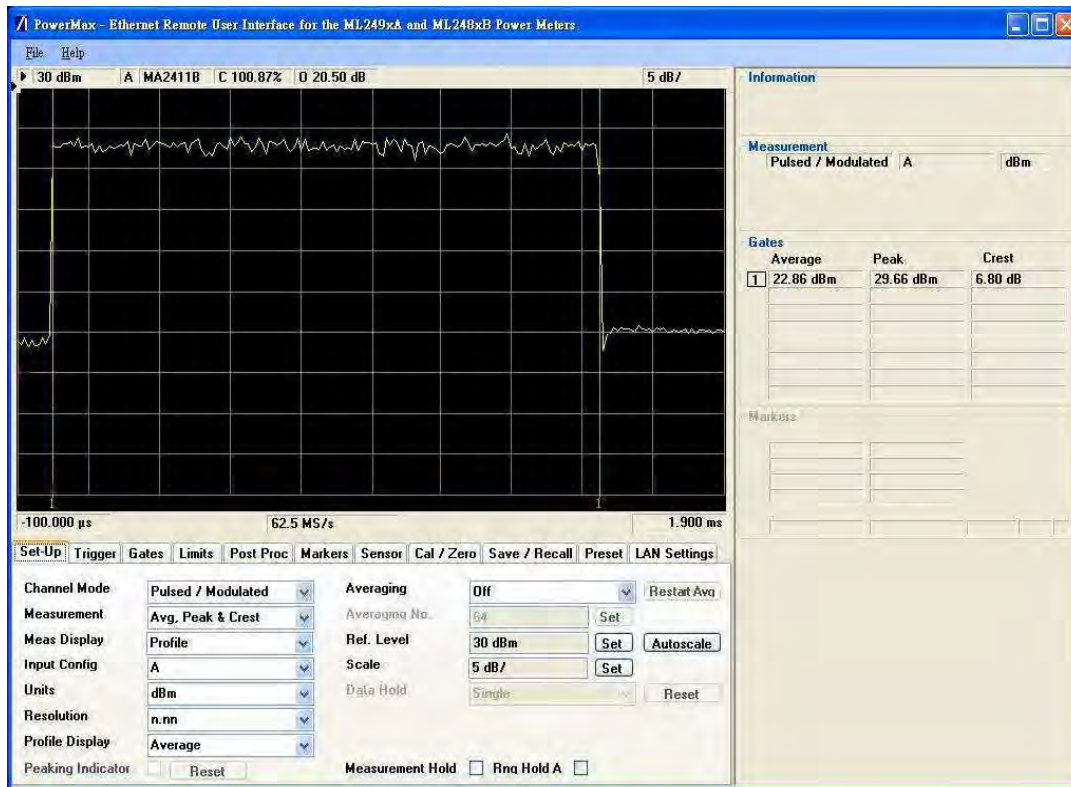


ZONE TYPE PUSC
MODULATION 16QAM 1/2
BANDWIDTH 5MHz

FREQUENCY 2498.5 MHz

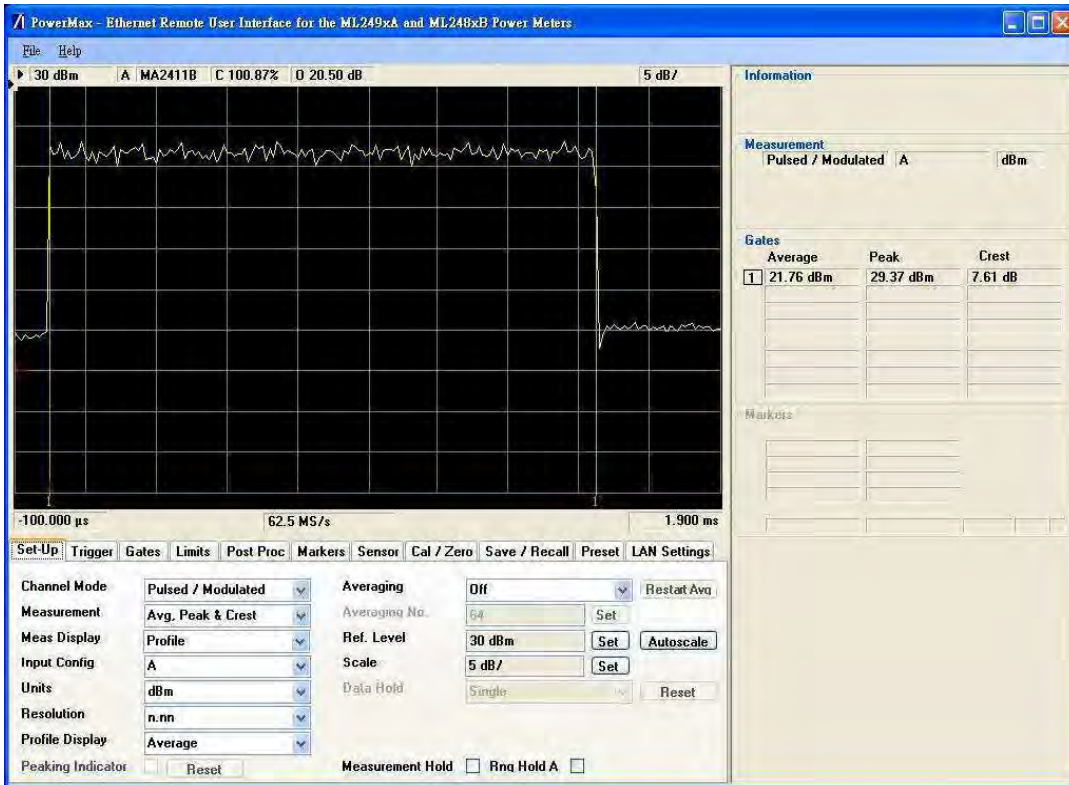


FREQUENCY 2587 MHz



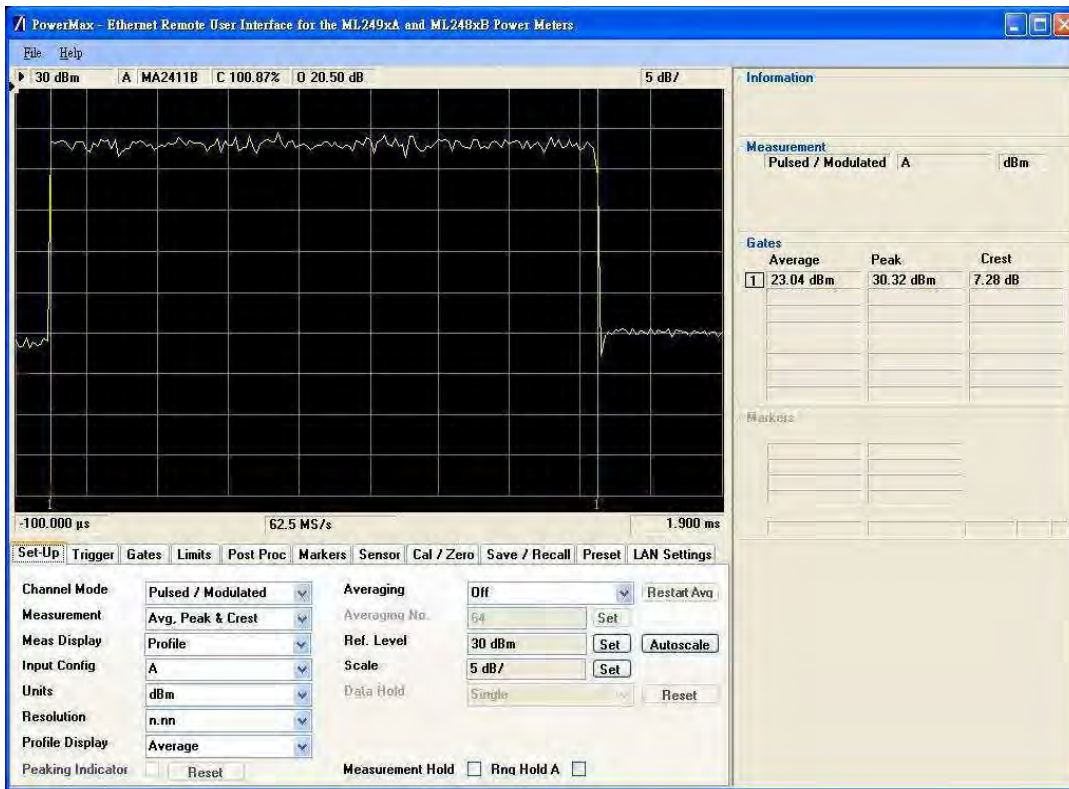
ZONE TYPE PUSC
MODULATION 16QAM 1/2
BANDWIDTH 5MHz

FREQUENCY 2687.5 MHz

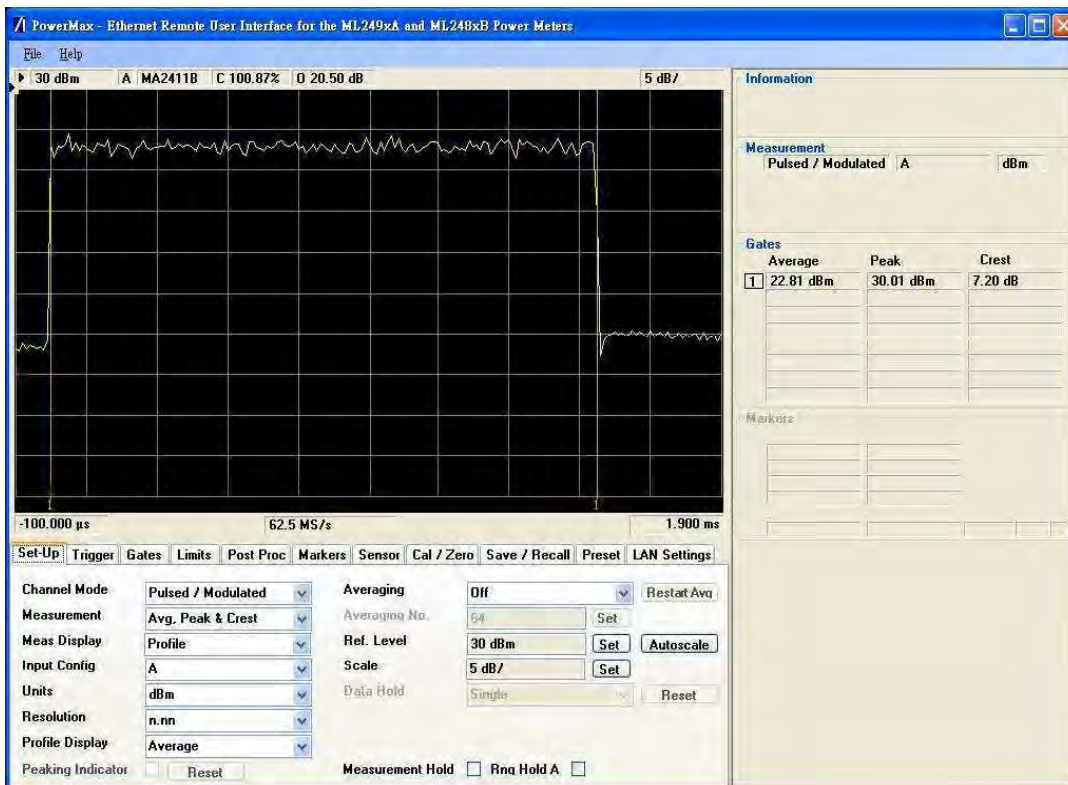


ZONE TYPE PUSC
MODULATION 16QAM 3/4
BANDWIDTH 5MHz

FREQUENCY 2498.5 MHz

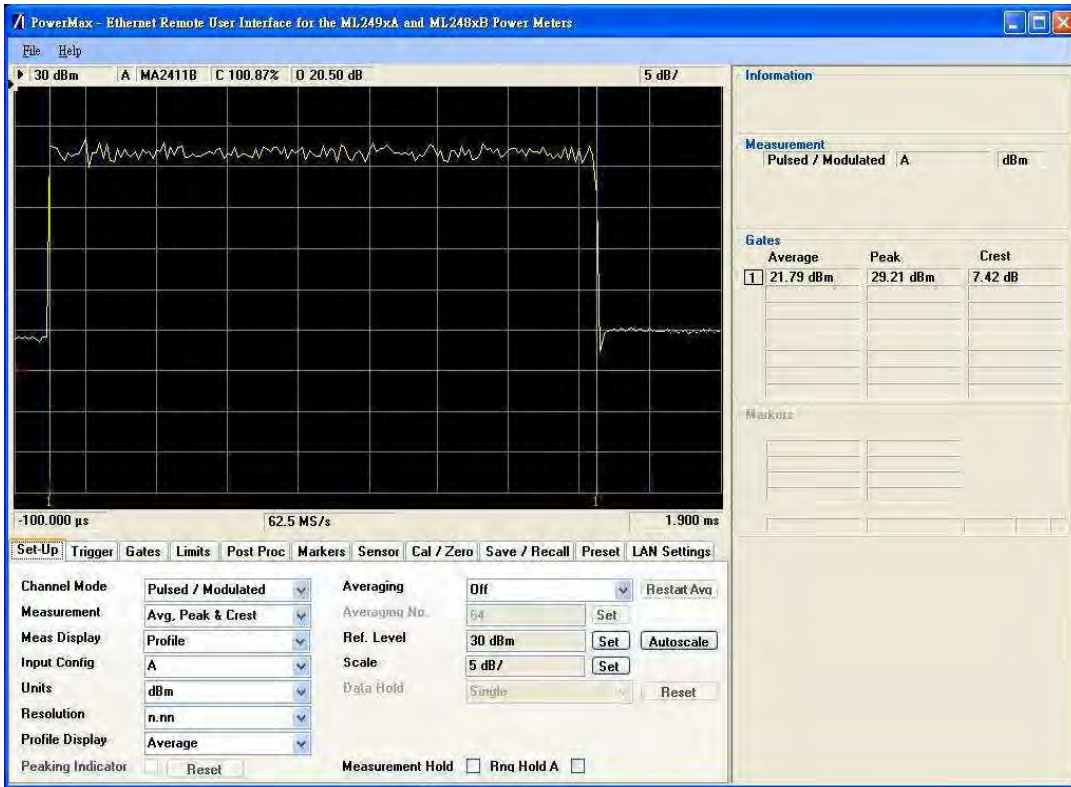


FREQUENCY 2587 MHz



ZONE TYPE PUSC
 MODULATION 16QAM 3/4
 BANDWIDTH 5MHz

 FREQUENCY 2687.5 MHz



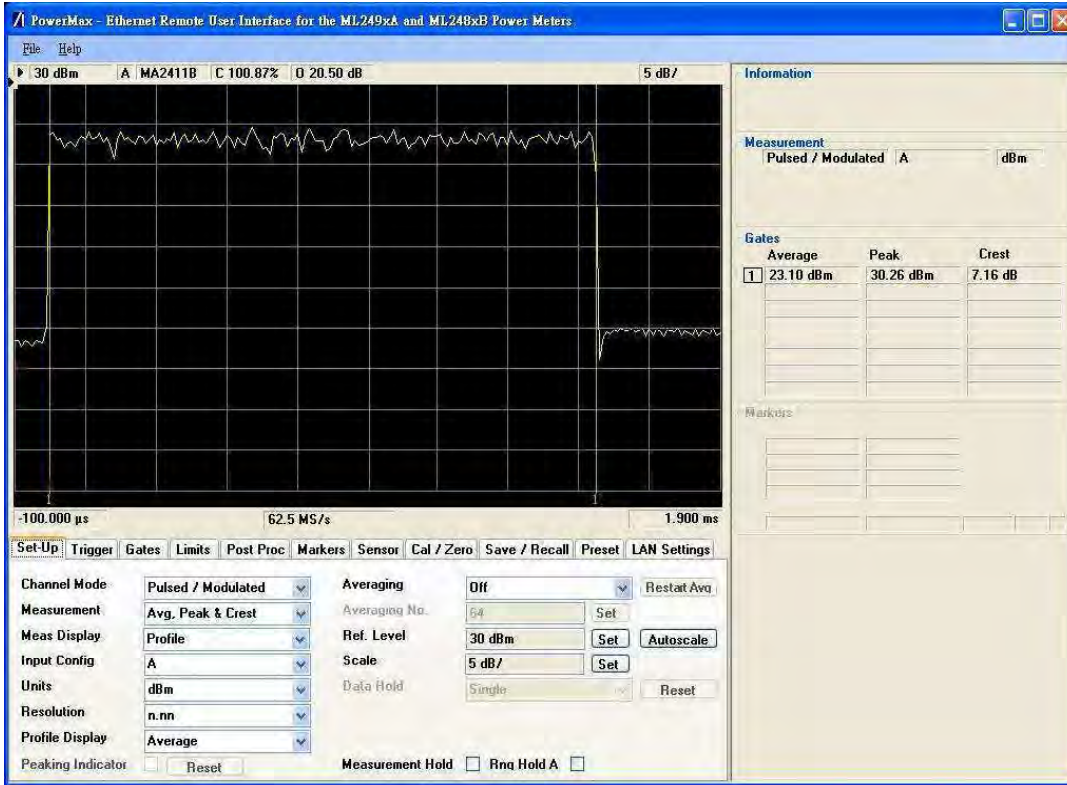
**APPENDIX C UL BURST PEAK-TO-AVERAGE POWER RATIO
FOR 5MHz BANDWIDTH / ANT 2**

Summary measured result of power measurement of ANT 2 :

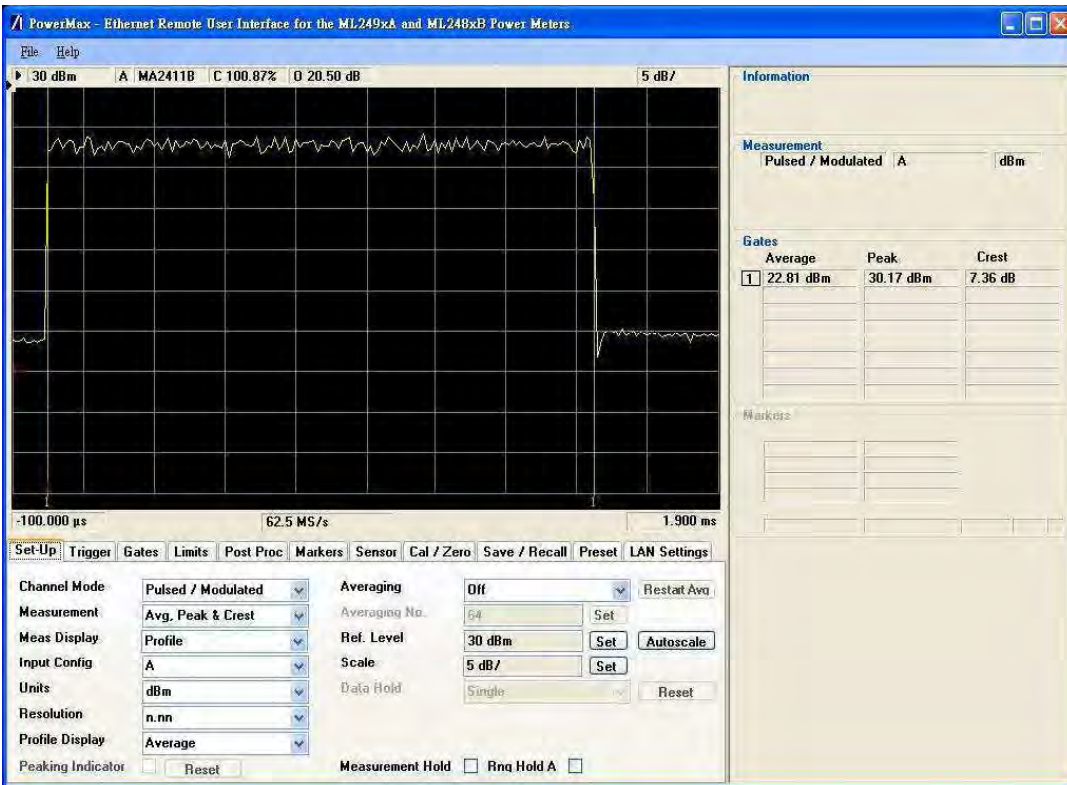
Channel BW	UL zone type / DL/UL symbols	Channel Frequency (MHz)	Conducted Power (dBm)		Peak to Average ratio (dB)	UL modulation
			AV	PK		
5MHz	PUSC / 29/18	2498,5	23,1	30,26	7,16	QPSK-1/2
		2587	22,81	30,17	7,36	
		2687,5	21,76	29,91	8,15	
		2498,5	23,11	30,22	7,11	QPSK-3/4
		2587	22,81	30,22	7,41	
		2687,5	21,78	29,91	8,13	
		2498,5	23,04	30,22	7,18	16QAM-1/2
		2587	22,76	30,27	7,51	
		2687,5	21,81	29,87	8,06	
		2498,5	23,05	30,25	7,2	16QAM-3/4
		2587	22,71	30,24	7,53	
		2687,5	21,71	29,98	8,27	

ZONE TYPE PUSC
MODULATION QPSK 1/2
BANDWIDTH 5MHz

FREQUENCY 2498.5 MHz

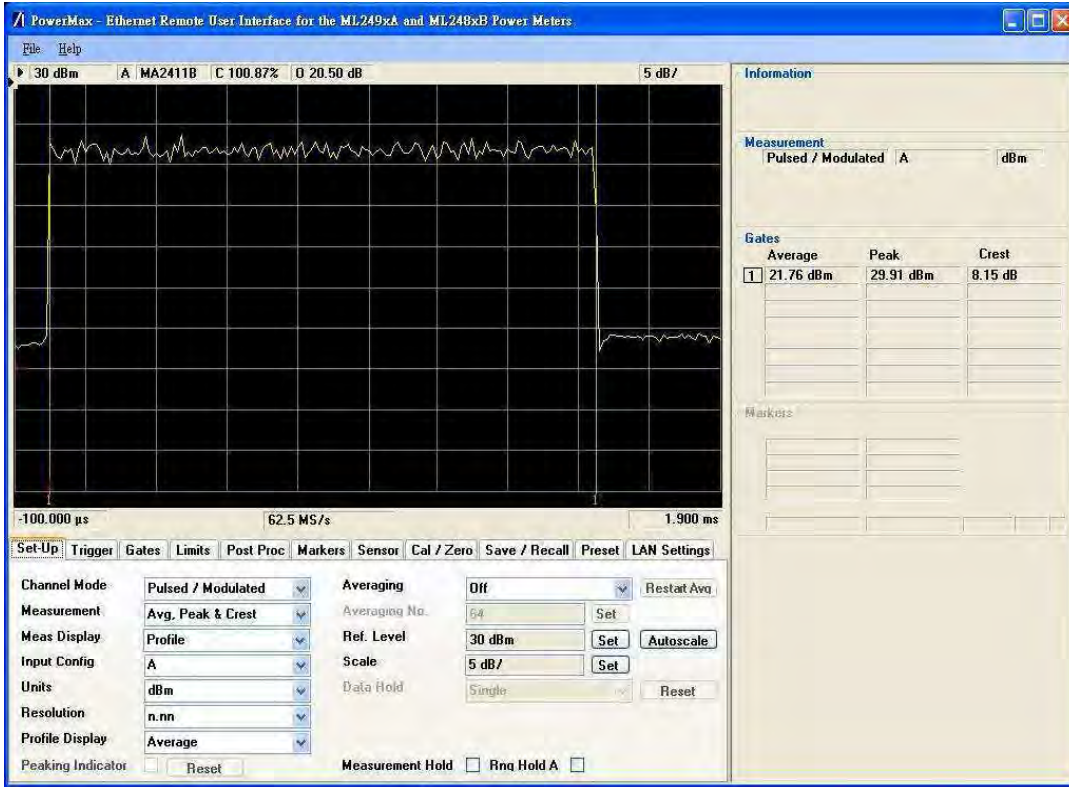


FREQUENCY 2587 MHz



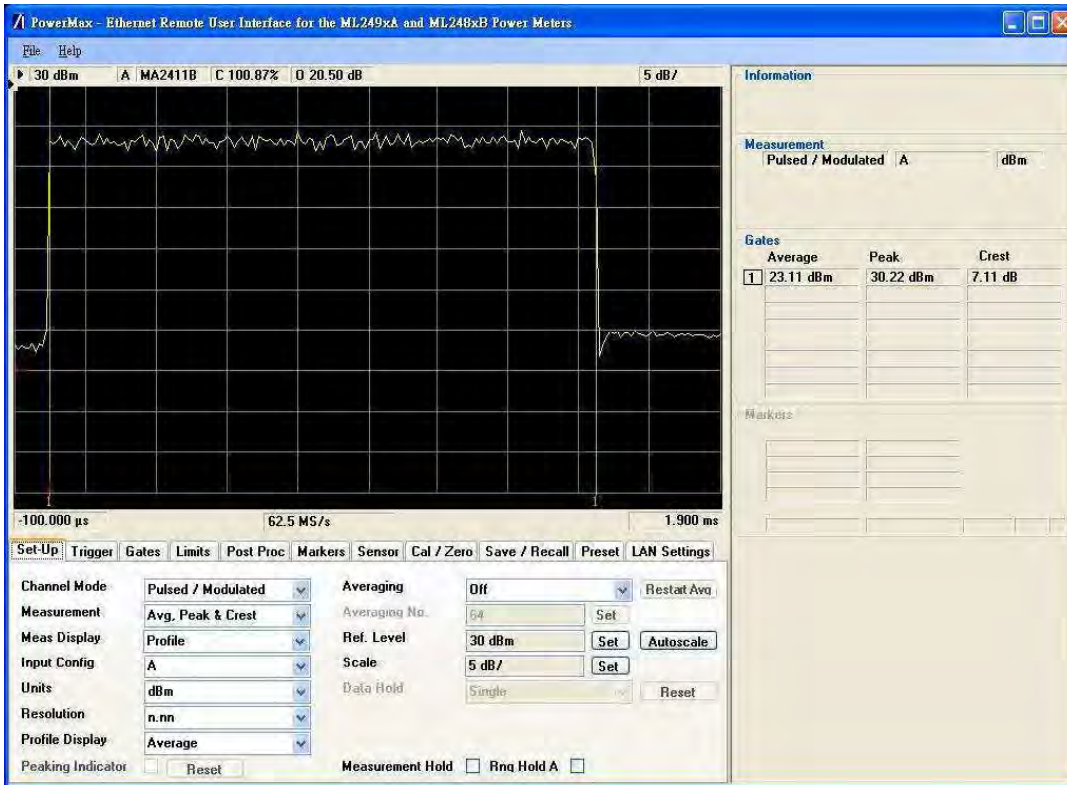
ZONE TYPE PUSC
MODULATION QPSK 1/2
BANDWIDTH 5MHz

FREQUENCY 2687.5 MHz

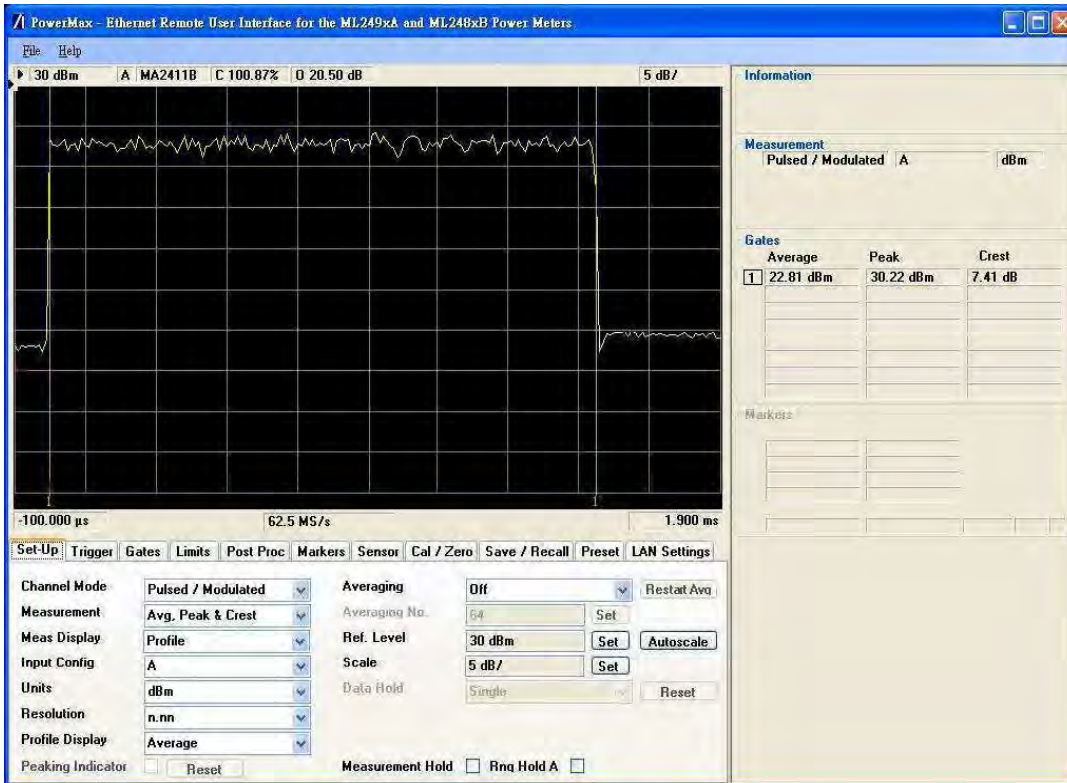


ZONE TYPE PUSC
MODULATION QPSK 3/4
BANDWIDTH 5MHz

FREQUENCY 2498.5 MHz

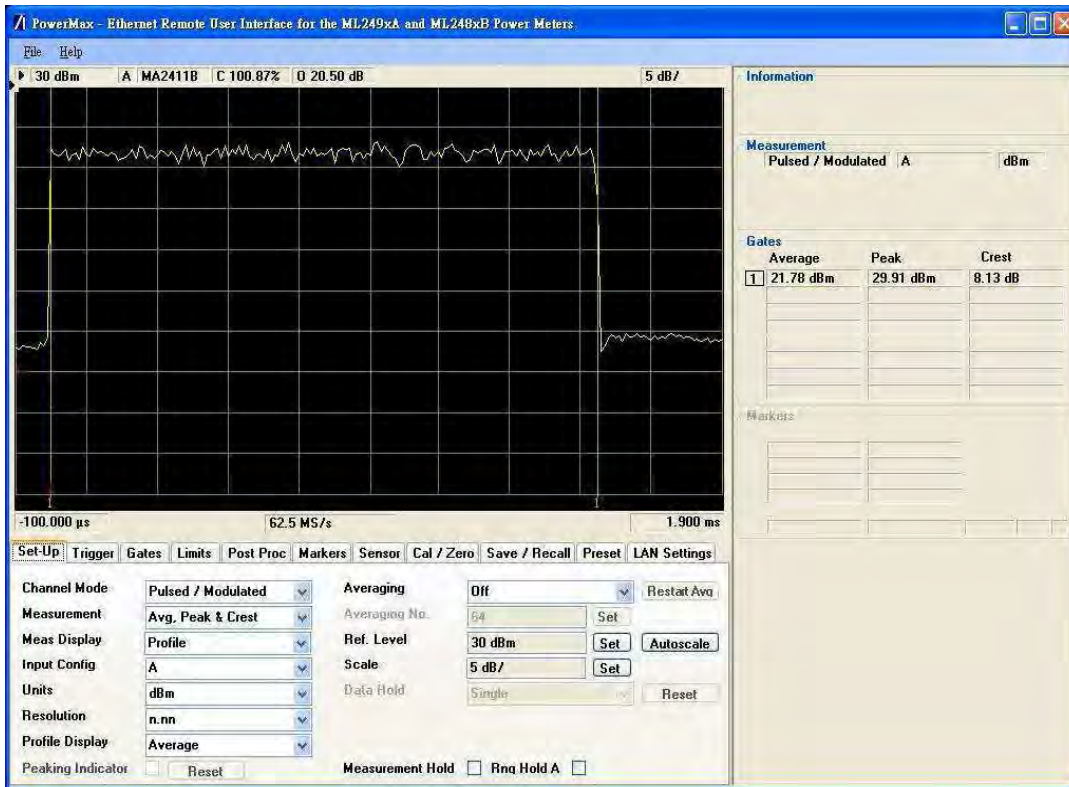


FREQUENCY 2587 MHz



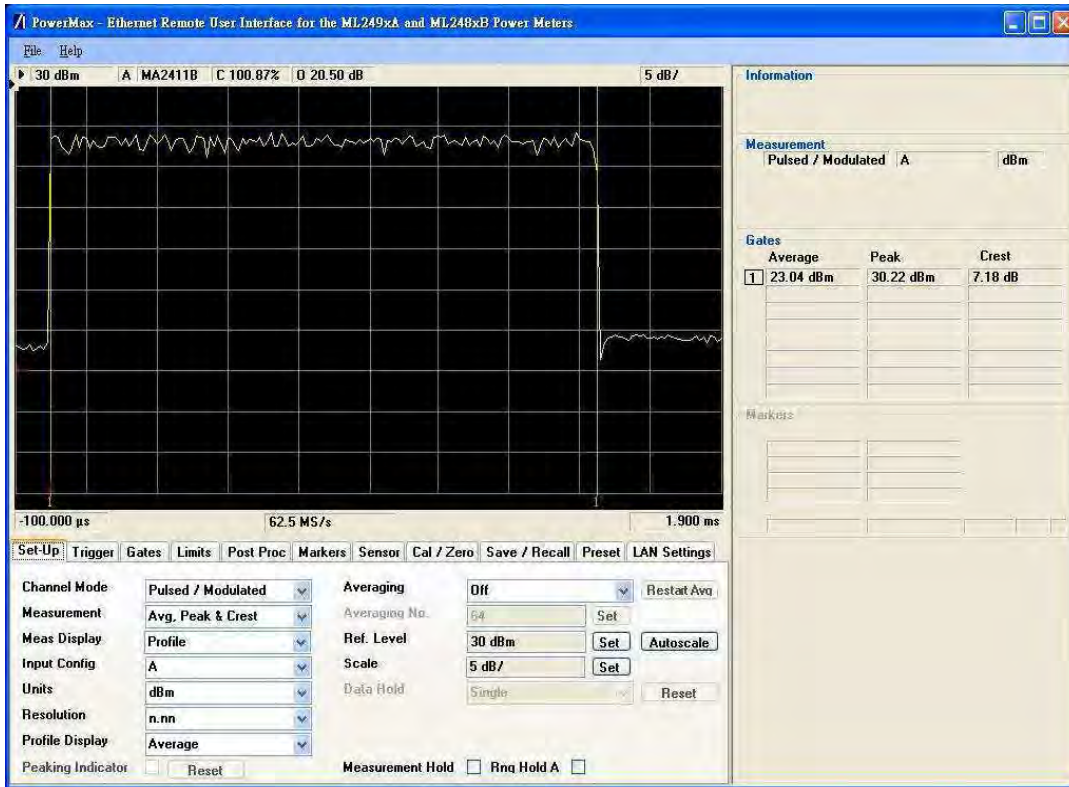
ZONE TYPE PUSC
MODULATION QPSK 3/4
BANDWIDTH 5MHz

FREQUENCY 2687.5 MHz

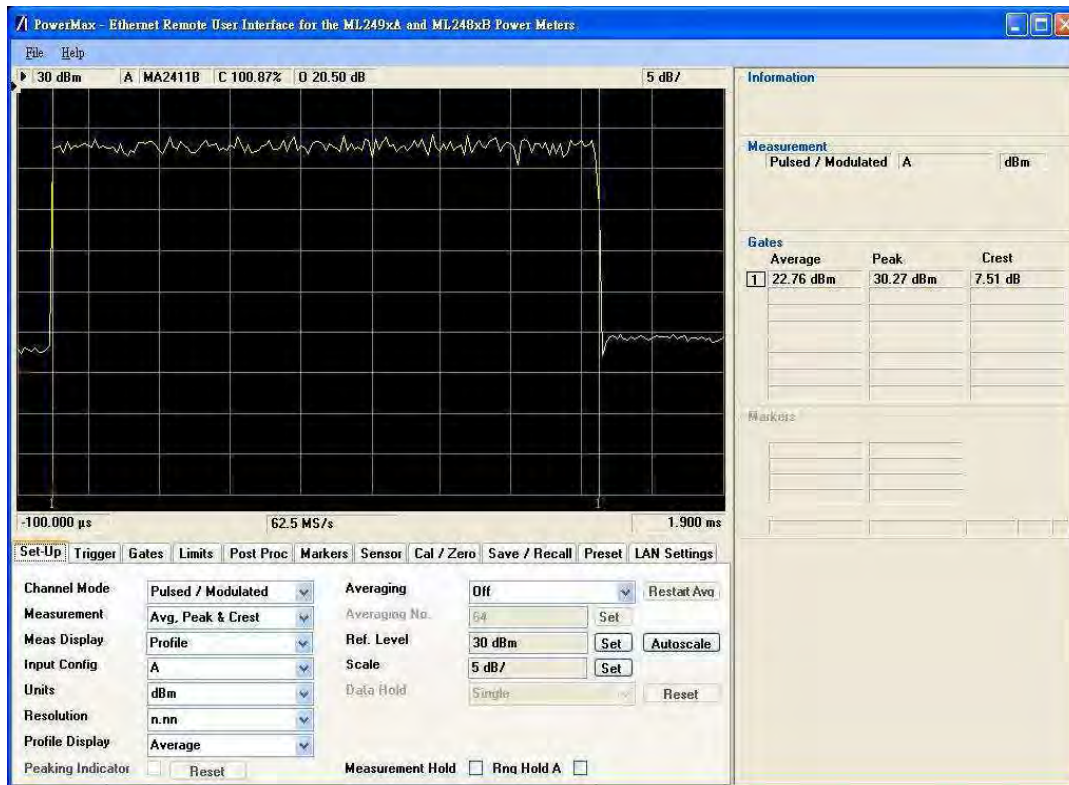


ZONE TYPE PUSC
 MODULATION 16QAM 1/2
 BANDWIDTH 5MHz

FREQUENCY 2498.5 MHz

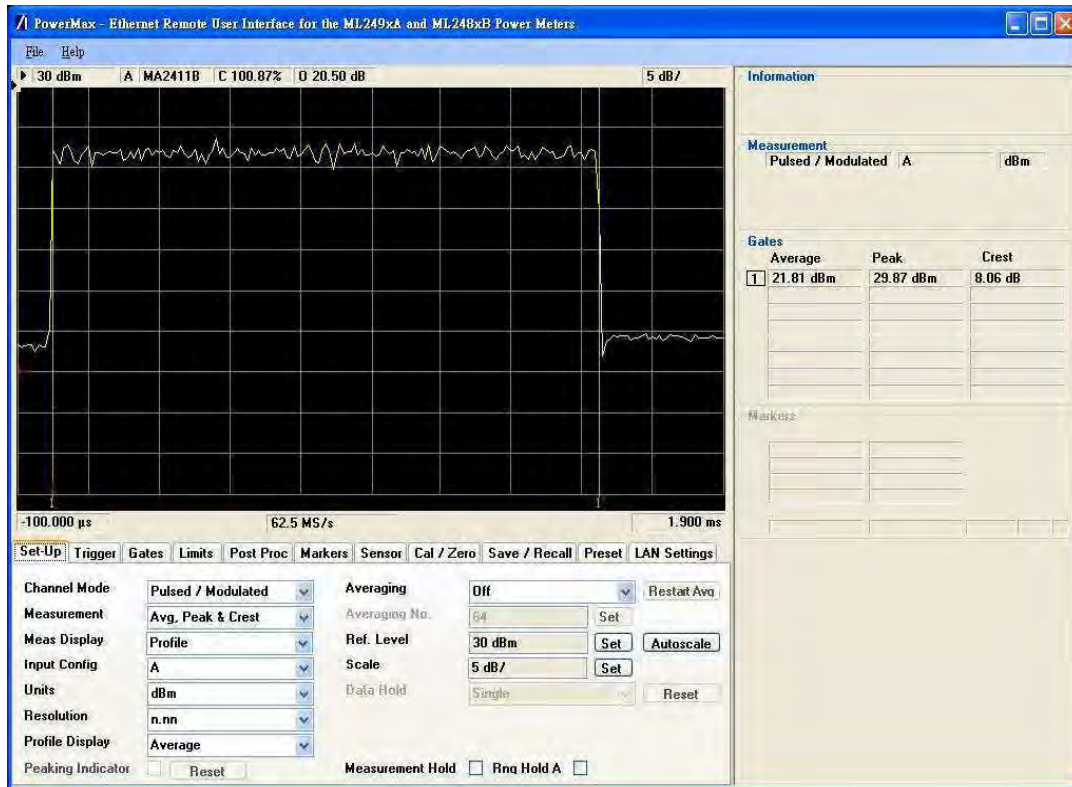


FREQUENCY 2587 MHz



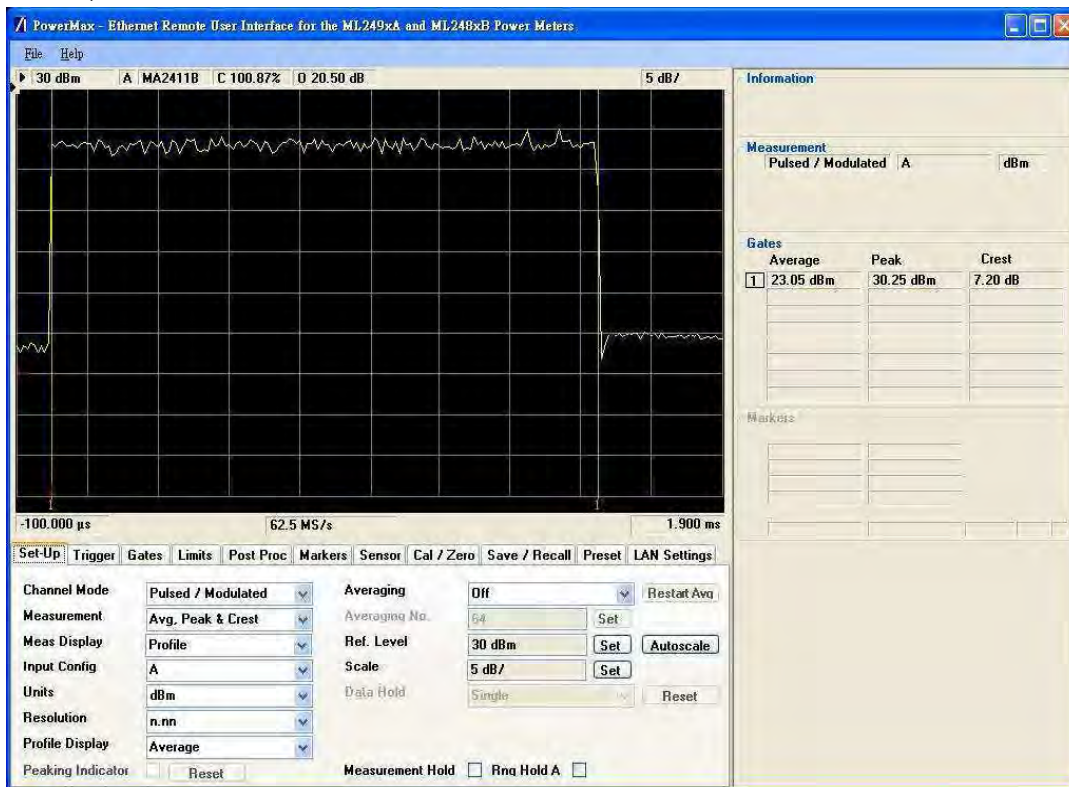
ZONE TYPE PUSC
MODULATION 16QAM 1/2
BANDWIDTH 5MHz

FREQUENCY 2687.5 MHz

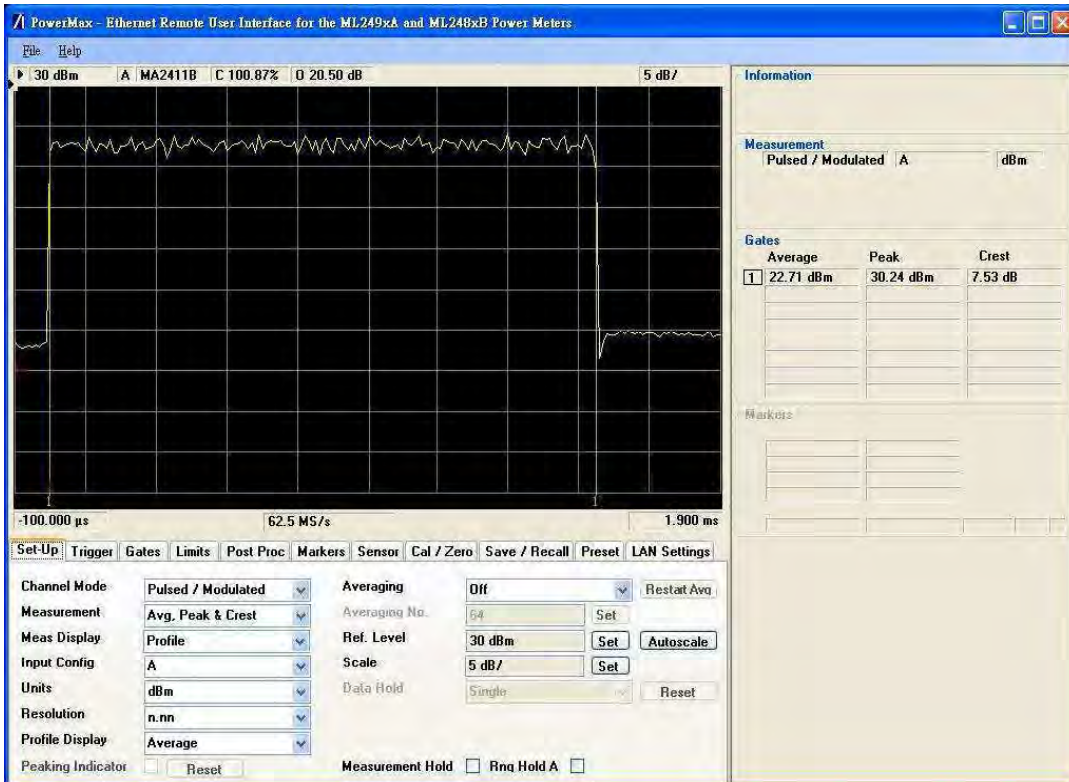


ZONE TYPE PUSC
 MODULATION 16QAM 3/4
 BANDWIDTH 5MHz

FREQUENCY 2498.5 MHz

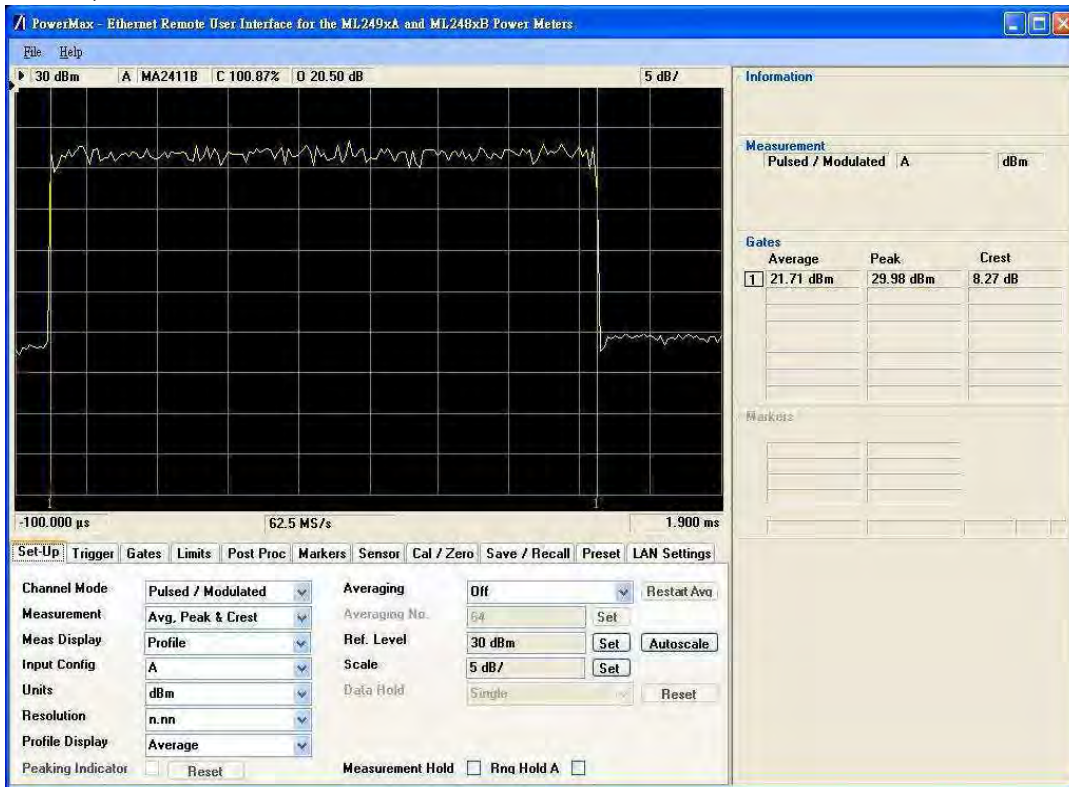


FREQUENCY 2587 MHz



ZONE TYPE PUSC
MODULATION 16QAM 3/4
BANDWIDTH 5MHz

FREQUENCY 2687.5 MHz



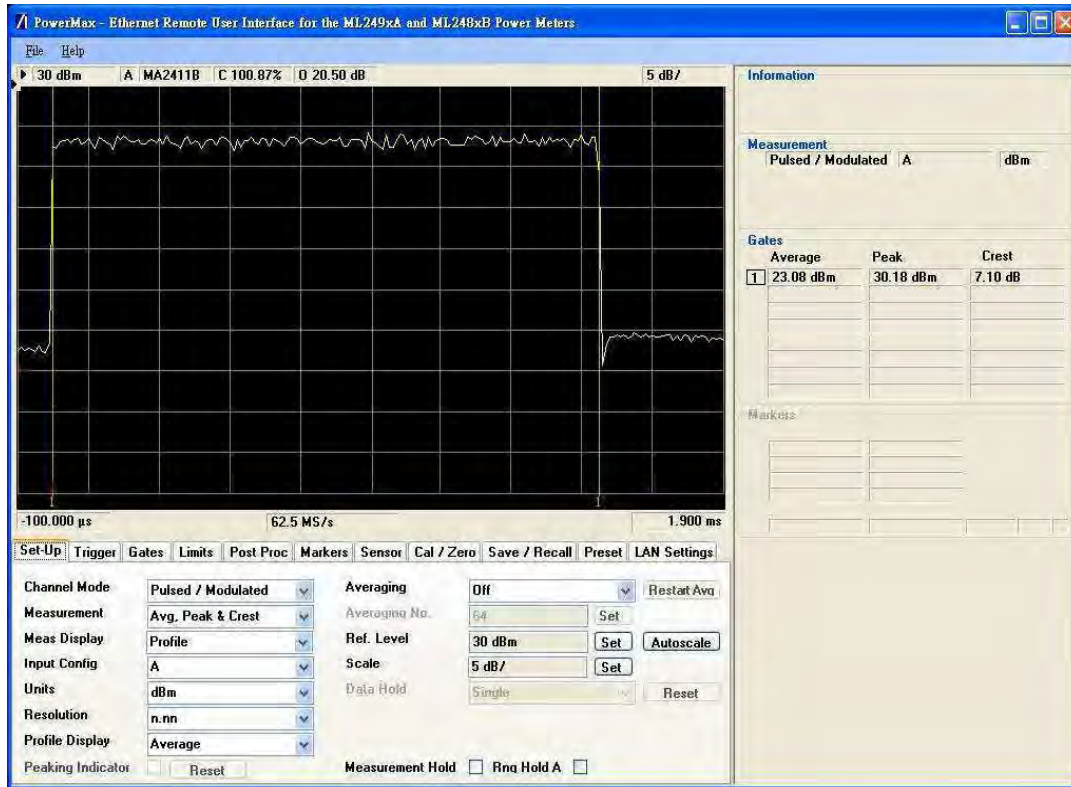
**APPENDIX C UL BURST PEAK-TO-AVERAGE POWER RATIO
FOR 10MHz BANDWIDTH / ANT 1**

Summary measured result of power measurement of ANT 1:

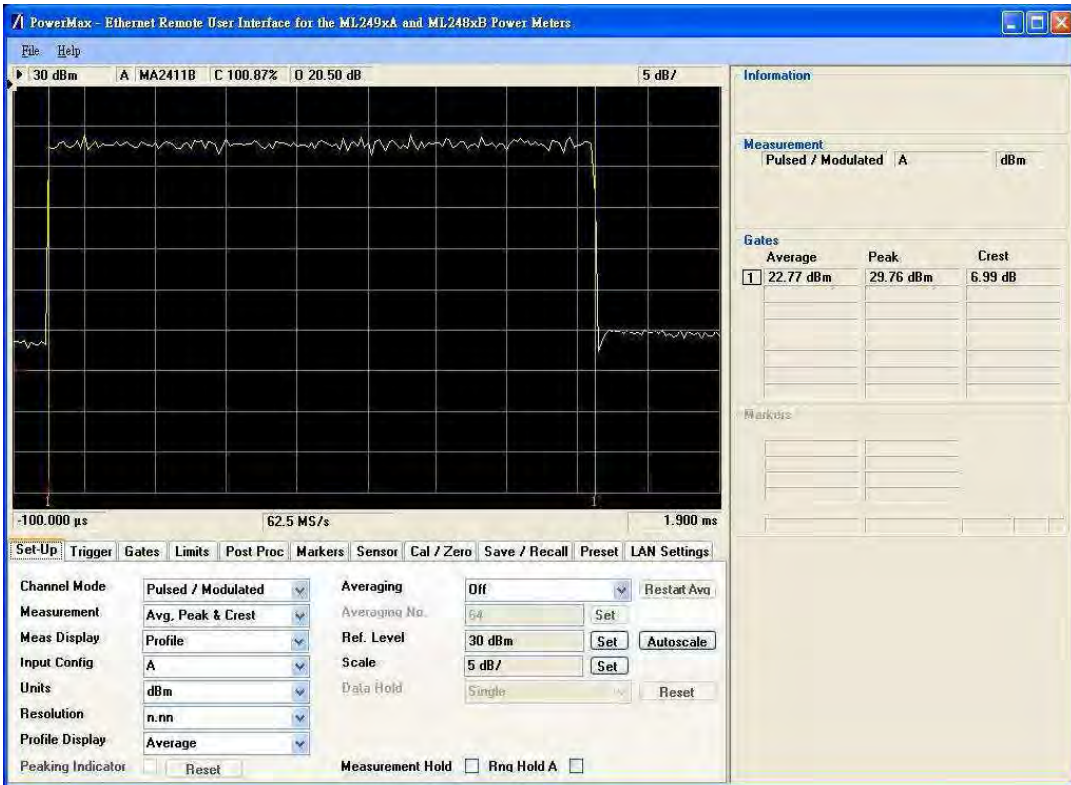
Channel BW	UL zone type / DL/UL symbols	Channel Frequency (MHz)	Conducted Power (dBm)		Peak to Average ratio (dB)	UL modulation
			AV	PK		
10MHz	PUSC / 29/18	2501	23,08	30,18	7,1	QPSK-1/2
		2587	22,77	29,76	6,99	
		2685	21,81	29,62	7,81	
		2501	23,09	30,39	7,3	QPSK-3/4
		2587	22,74	30,07	7,33	
		2685	21,82	29,92	8,1	
		2501	23,05	29,88	6,83	16QAM-1/2
		2587	22,71	30,14	7,43	
		2685	21,8	29,92	8,12	
		2501	23,06	29,99	6,93	16QAM-3/4
		2587	22,76	30,07	7,31	
		2685	21,73	29,82	8,09	

ZONE TYPE PUSC
MODULATION QPSK 1/2
BANDWIDTH 10MHz

FREQUENCY 2501 MHz

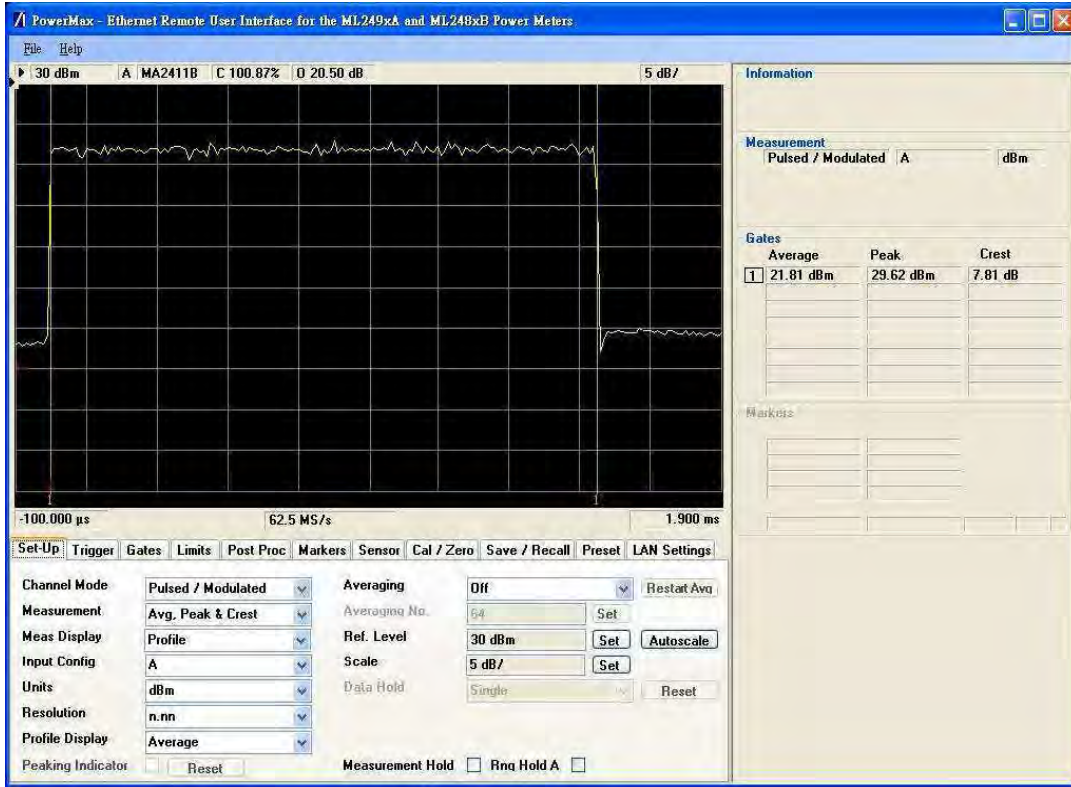


FREQUENCY 2587 MHz



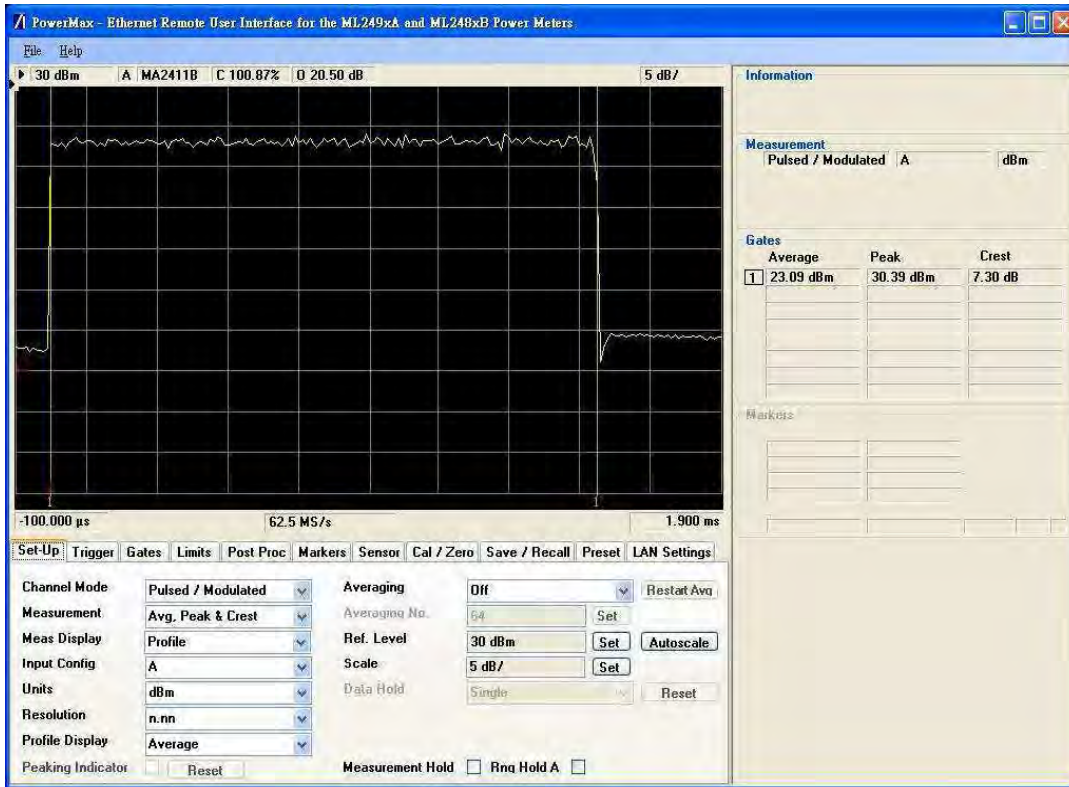
ZONE TYPE PUSC
MODULATION QPSK 1/2
BANDWIDTH 10MHz

FREQUENCY 2685 MHz

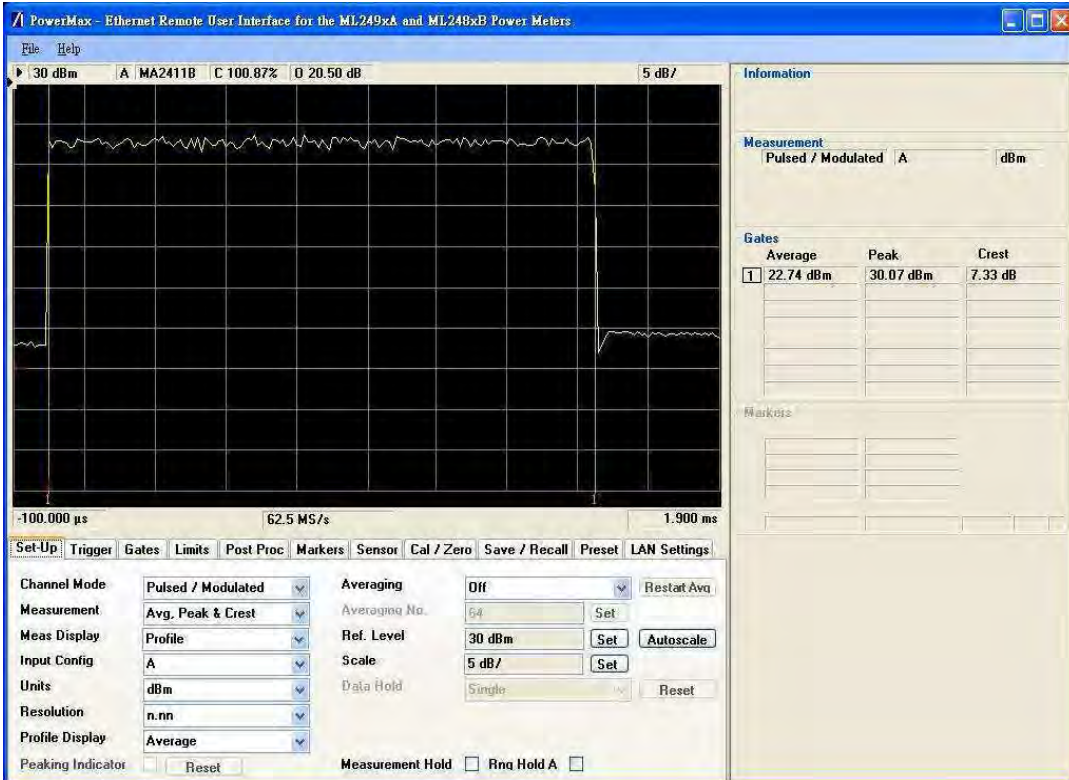


ZONE TYPE PUSC
 MODULATION QPSK 3/4
 BANDWIDTH 10MHz

FREQUENCY 2501 MHz

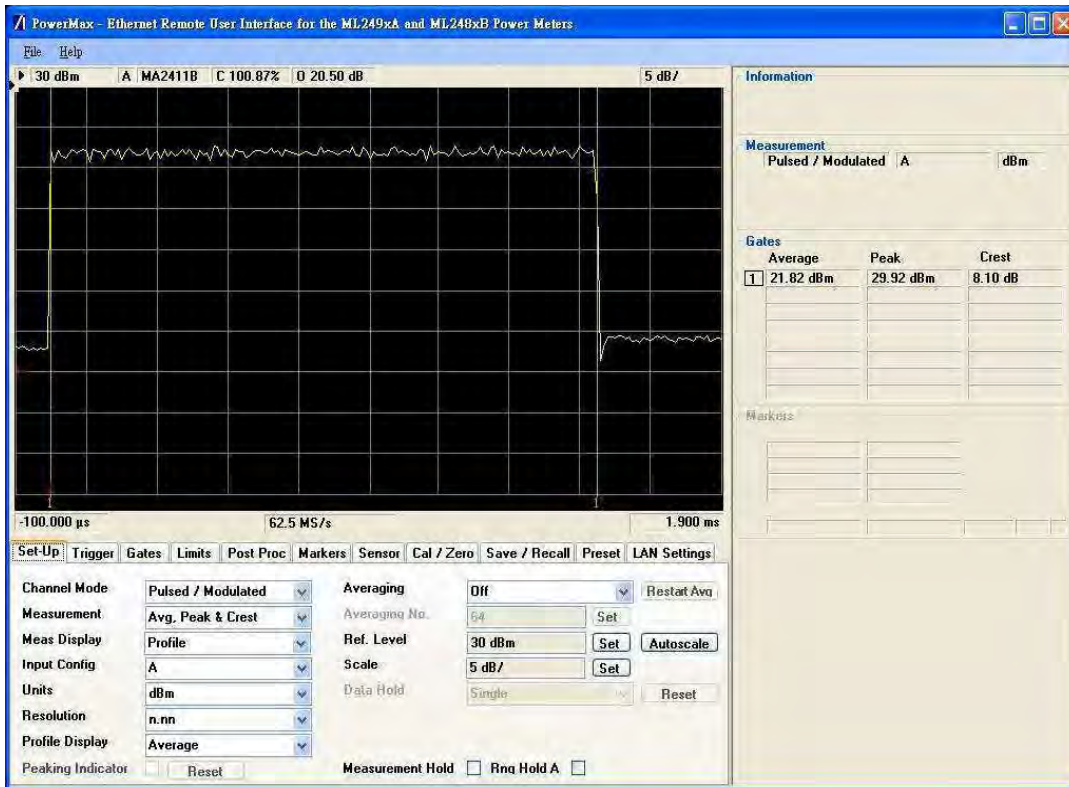


FREQUENCY 2587 MHz



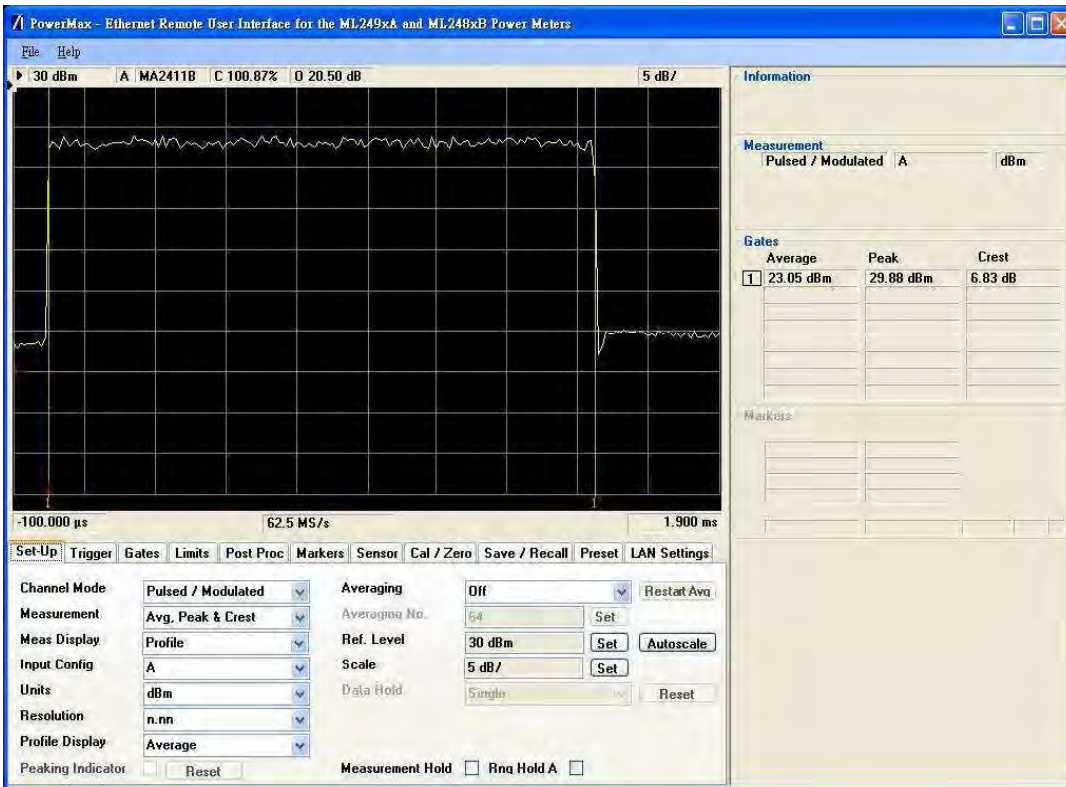
ZONE TYPE PUSC
MODULATION QPSK 3/4
BANDWIDTH 10MHz

FREQUENCY 2685 MHz

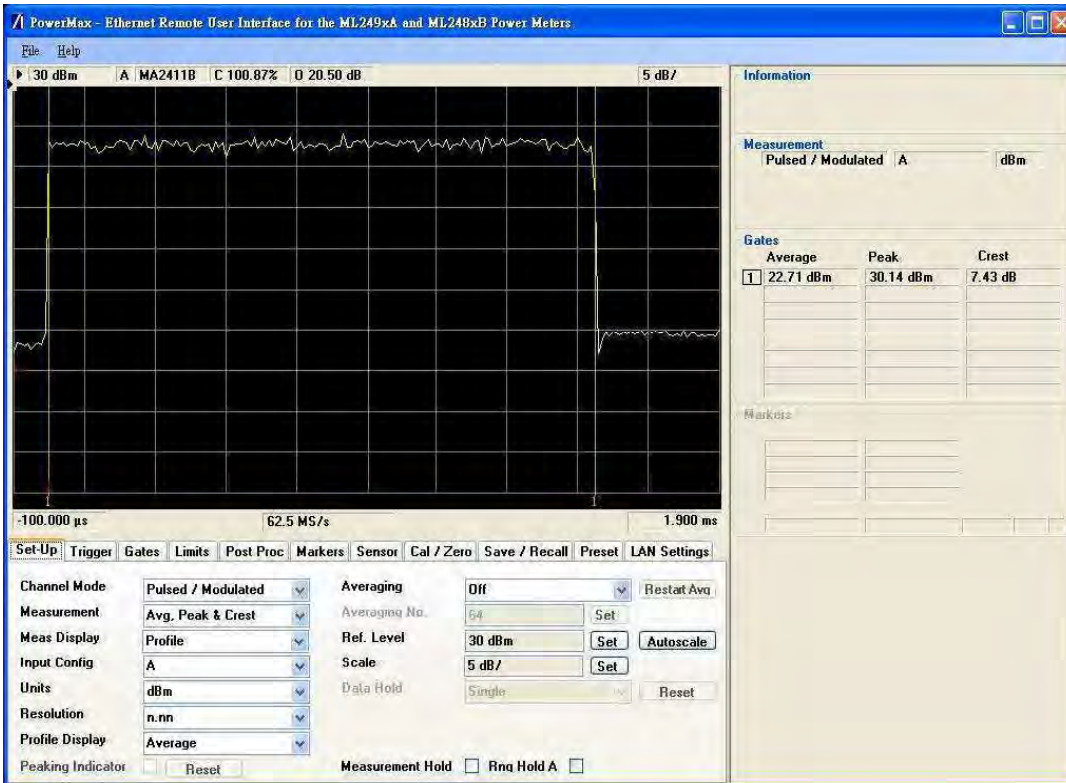


ZONE TYPE PUSC
 MODULATION 16QAM 1/2
 BANDWIDTH 10MHz

FREQUENCY 2501 MHz

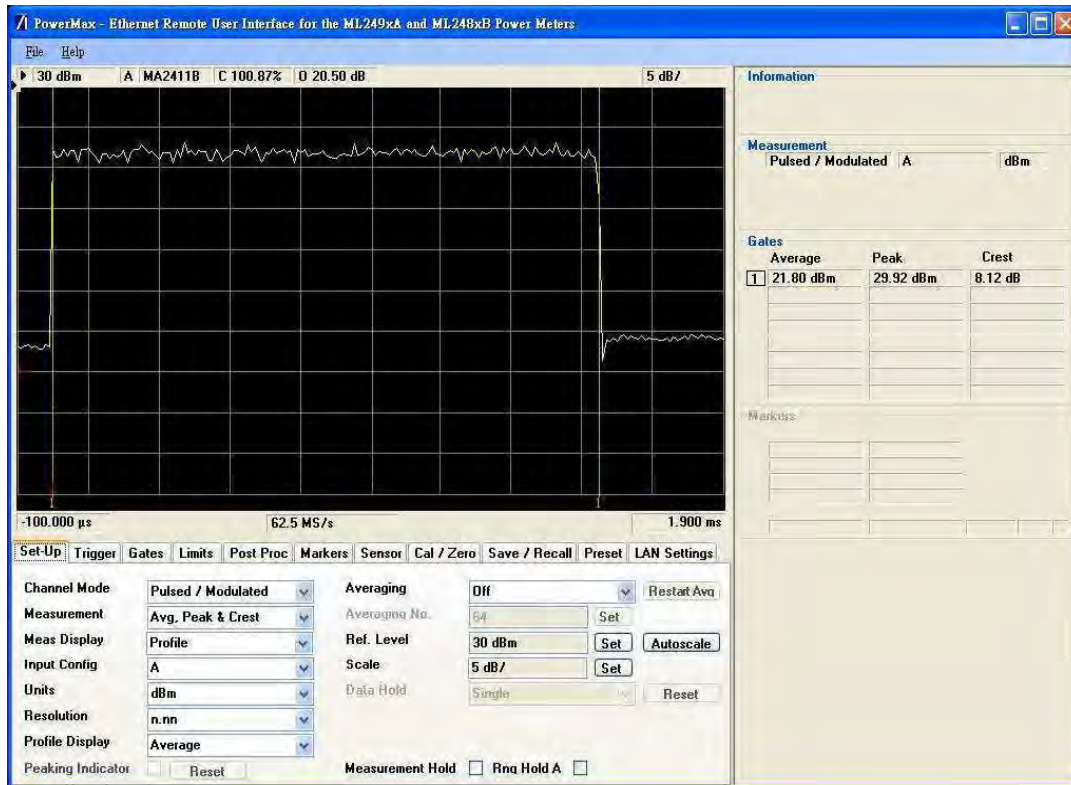


FREQUENCY 2587 MHz



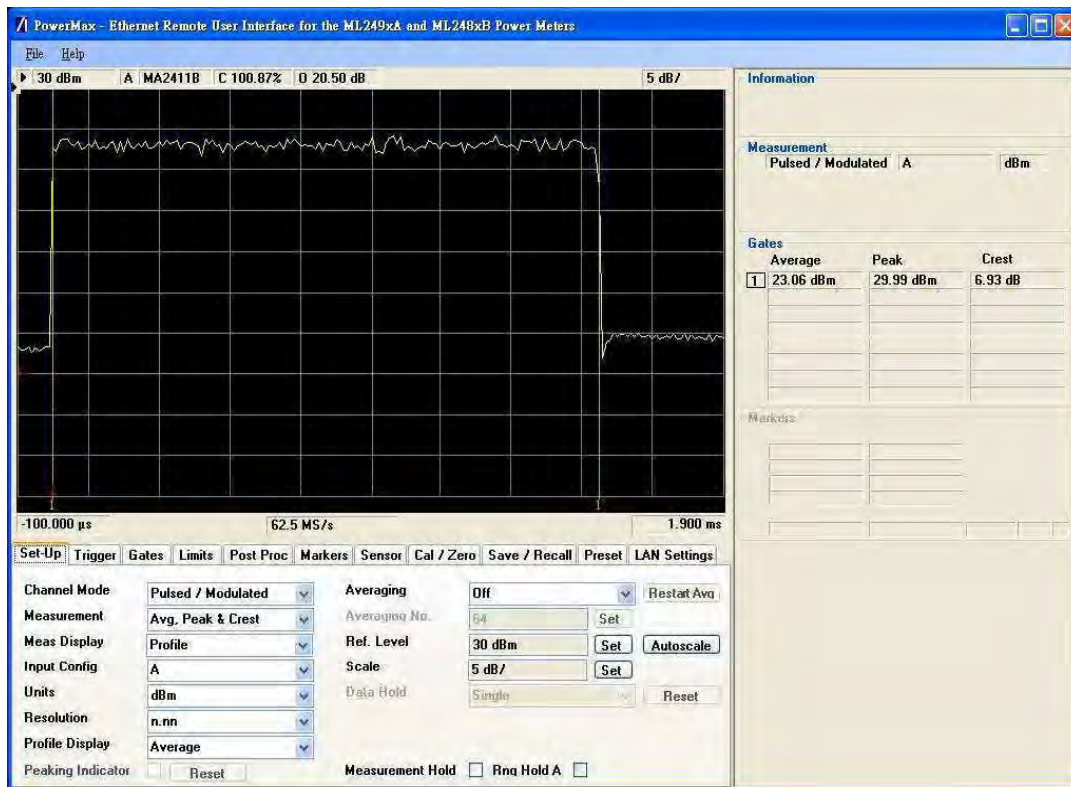
ZONE TYPE PUSC
MODULATION 16QAM 1/2
BANDWIDTH 10MHz

FREQUENCY 2685 MHz

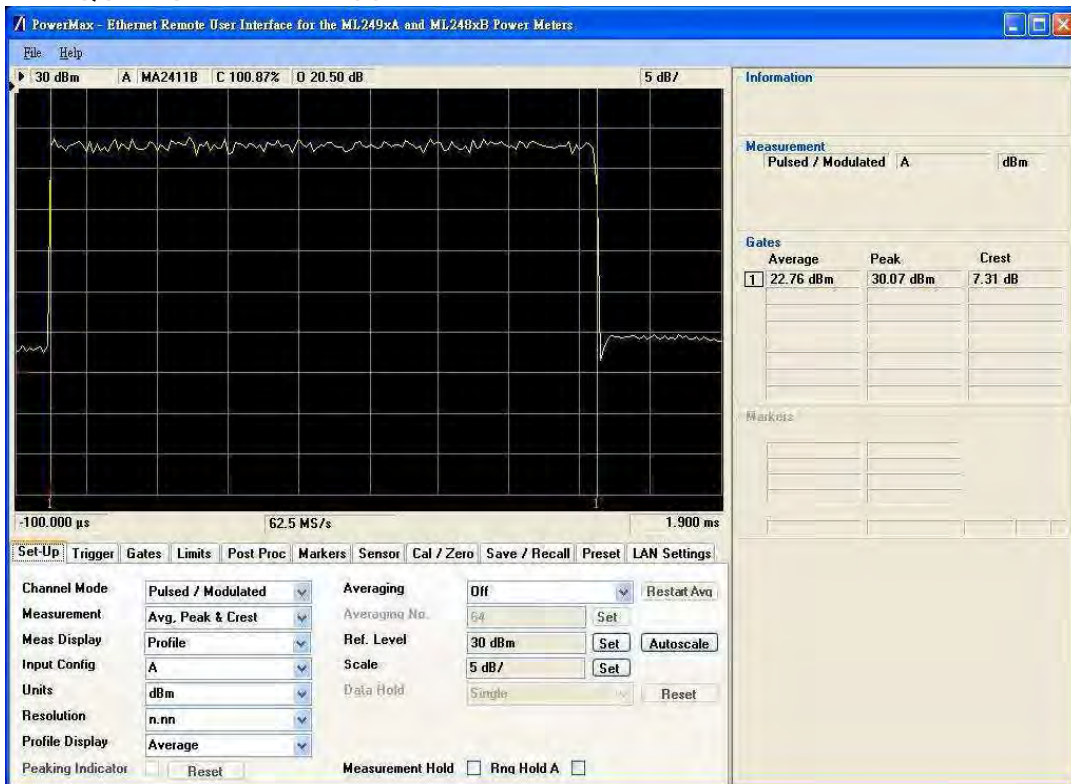


ZONE TYPE PUSC
MODULATION 16QAM 3/4
BANDWIDTH 10MHz

FREQUENCY 2501 MHz

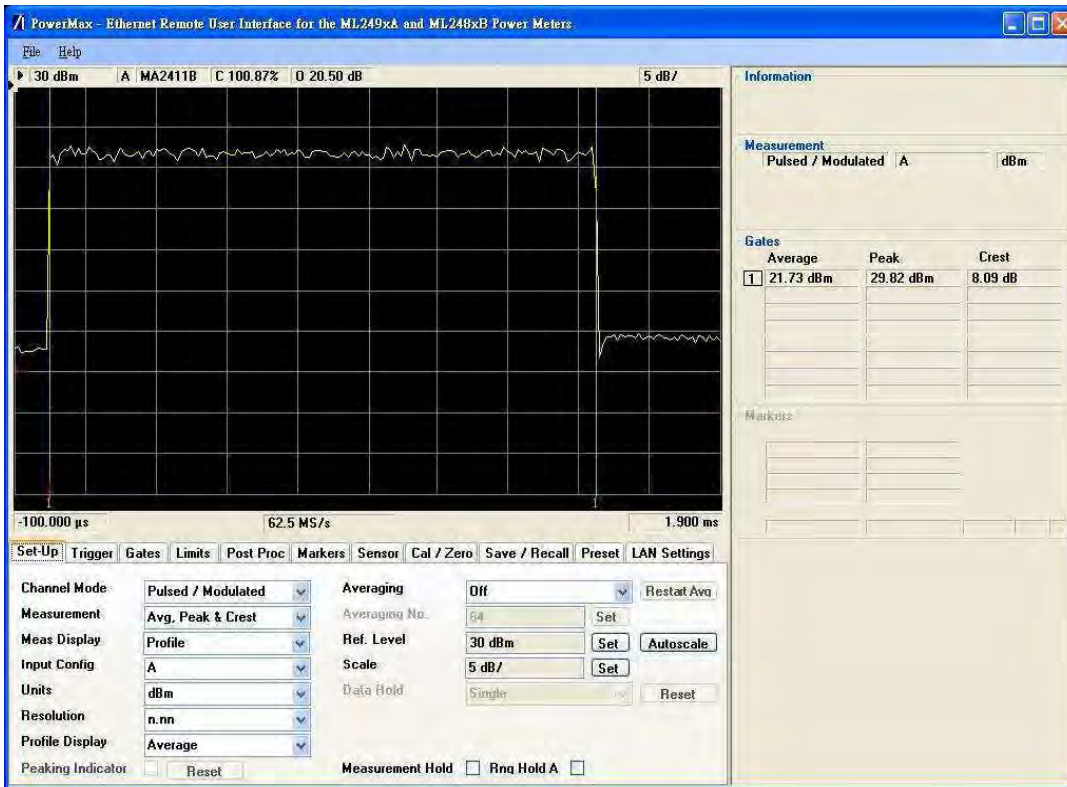


FREQUENCY 2587 MHz



ZONE TYPE PUSC
MODULATION 16QAM 3/4
BANDWIDTH 10MHz

FREQUENCY 2685 MHz



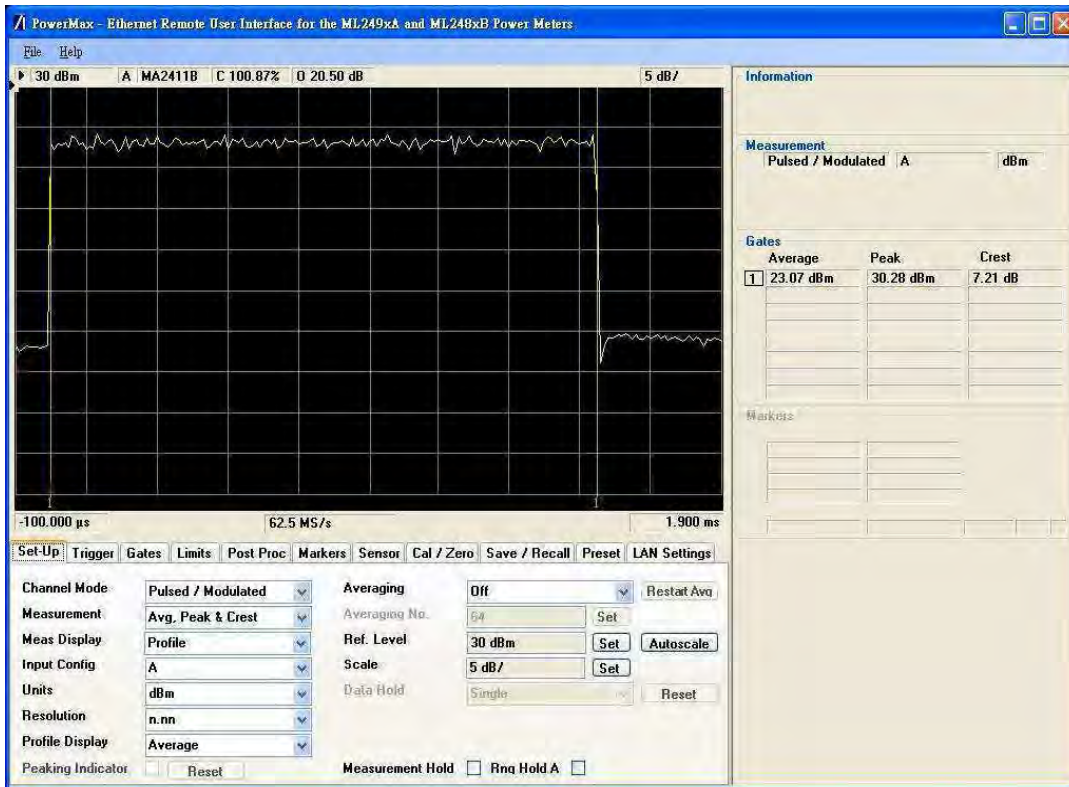
**APPENDIX C UL BURST PEAK-TO-AVERAGE POWER RATIO
FOR 10MHz BANDWIDTH / ANT 2**

Summary measured result of power measurement of ANT 2:

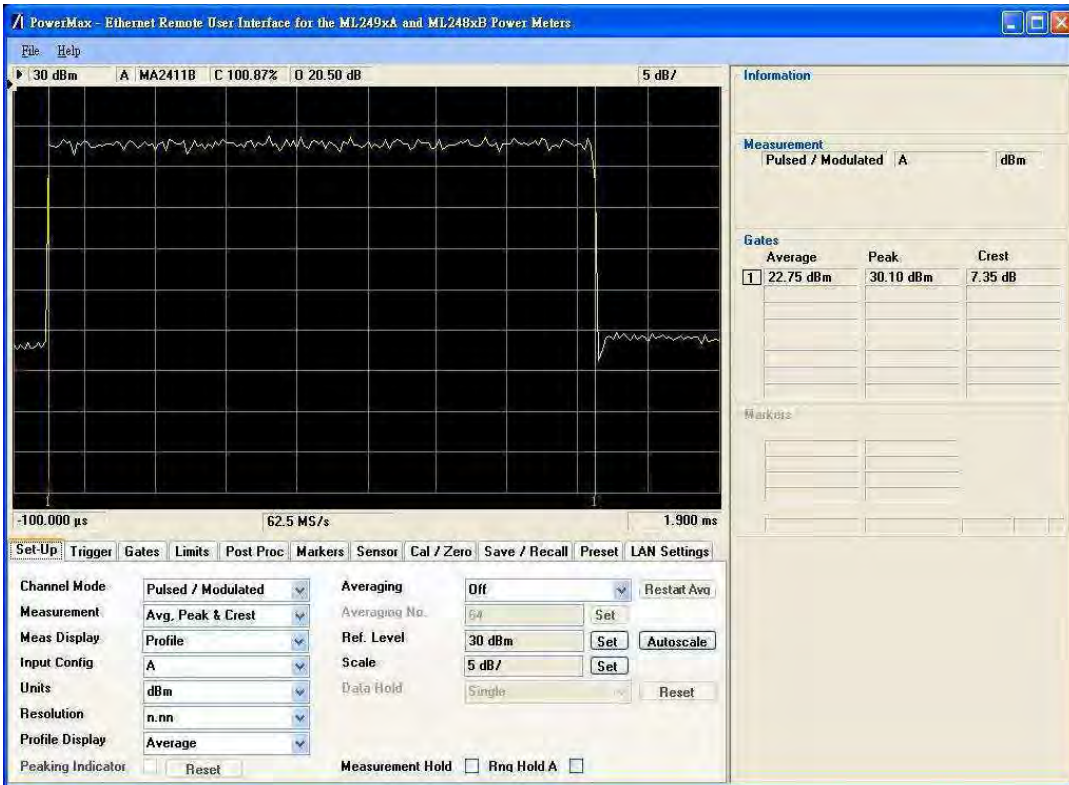
Channel BW	UL zone type / DL/UL symbols	Channel Frequency (MHz)	Conducted Power (dBm)		Peak to Average ratio (dB)	UL modulation
			AV	PK		
10MHz	PUSC / 29/18	2501	23,07	30,28	7,21	QPSK-1/2
		2587	22,75	30,1	7,35	
		2685	21,78	29,97	8,19	
		2501	23,05	29,88	6,83	QPSK-3/4
		2587	22,82	29,99	7,17	
		2685	21,86	29,85	7,99	
		2501	23,08	30,09	7,01	16QAM-1/2
		2587	22,75	30,1	7,35	
		2685	21,74	29,92	8,18	
		2501	23,05	30,31	7,26	16QAM-3/4
		2587	22,74	30,05	7,31	
		2685	21,76	29,78	8,02	

ZONE TYPE PUSC
MODULATION QPSK 1/2
BANDWIDTH 10MHz

FREQUENCY 2501 MHz

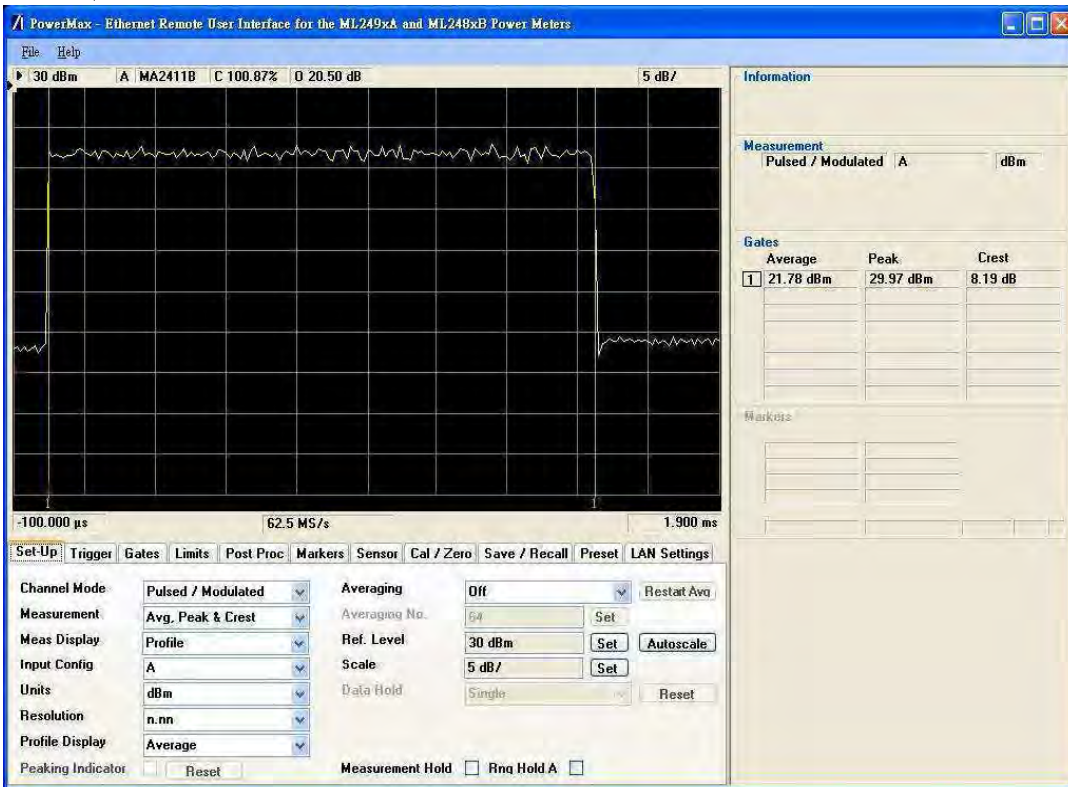


FREQUENCY 2587 MHz



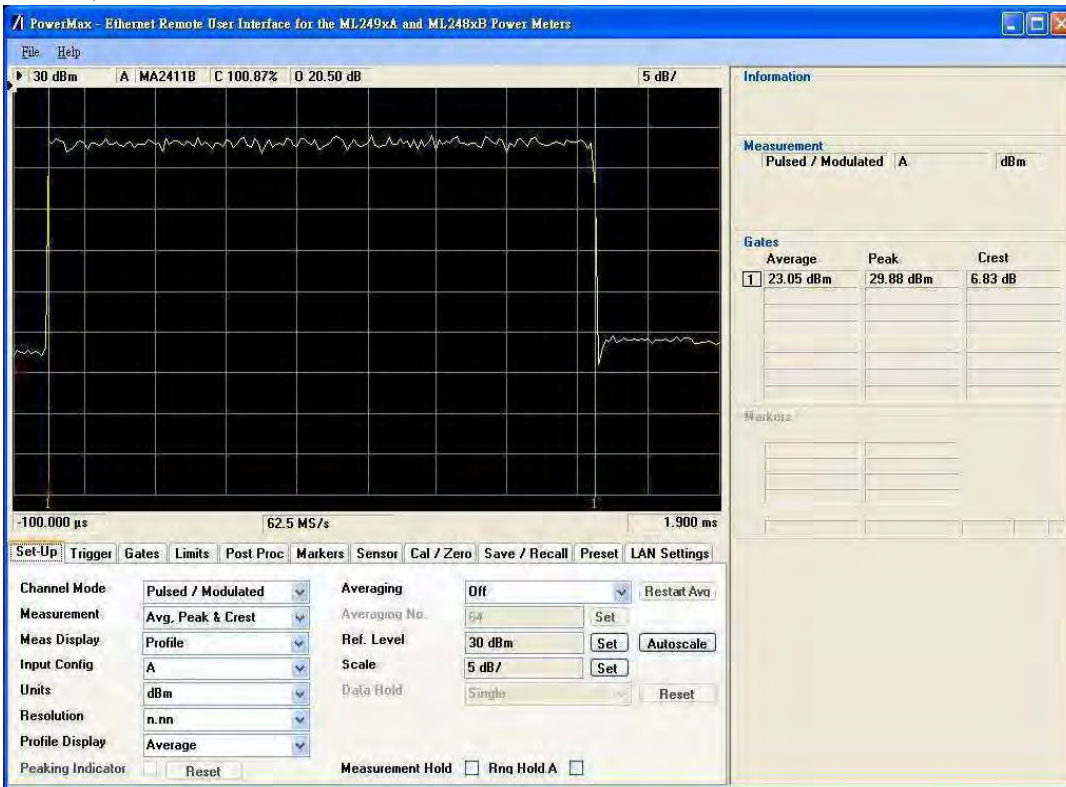
ZONE TYPE PUSC
MODULATION QPSK 1/2
BANDWIDTH 10MHz

FREQUENCY 2685 MHz

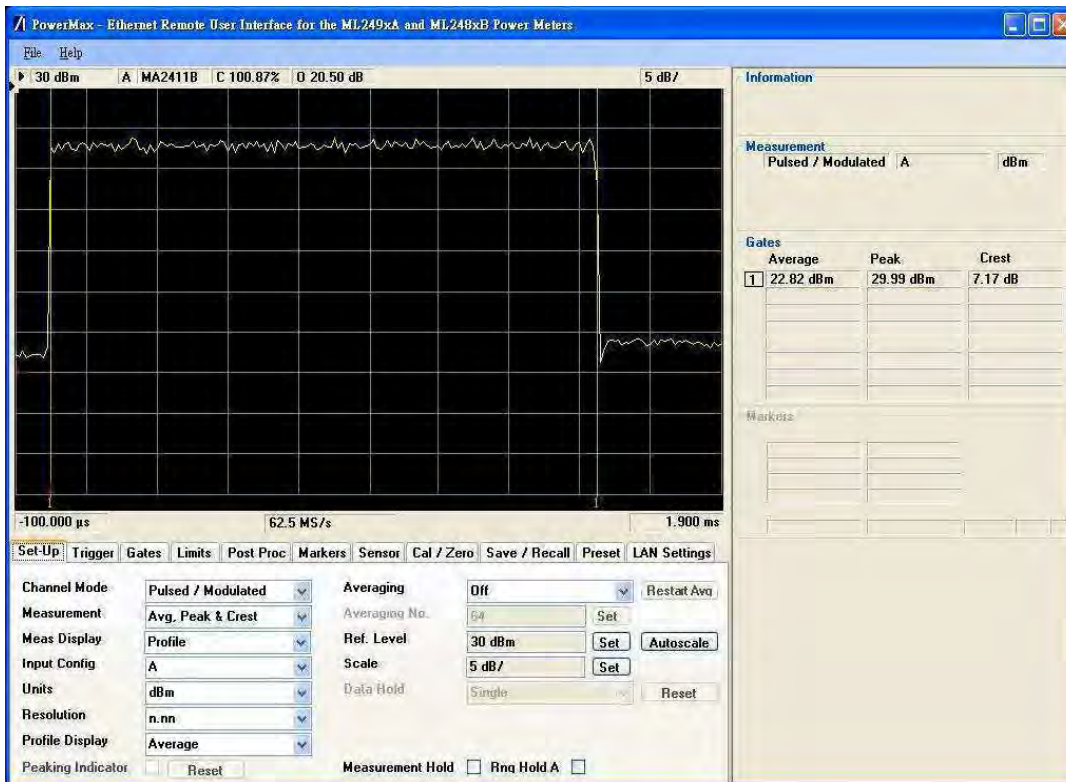


ZONE TYPE PUSC
 MODULATION QPSK 3/4
 BANDWIDTH 10MHz

FREQUENCY 2501 MHz

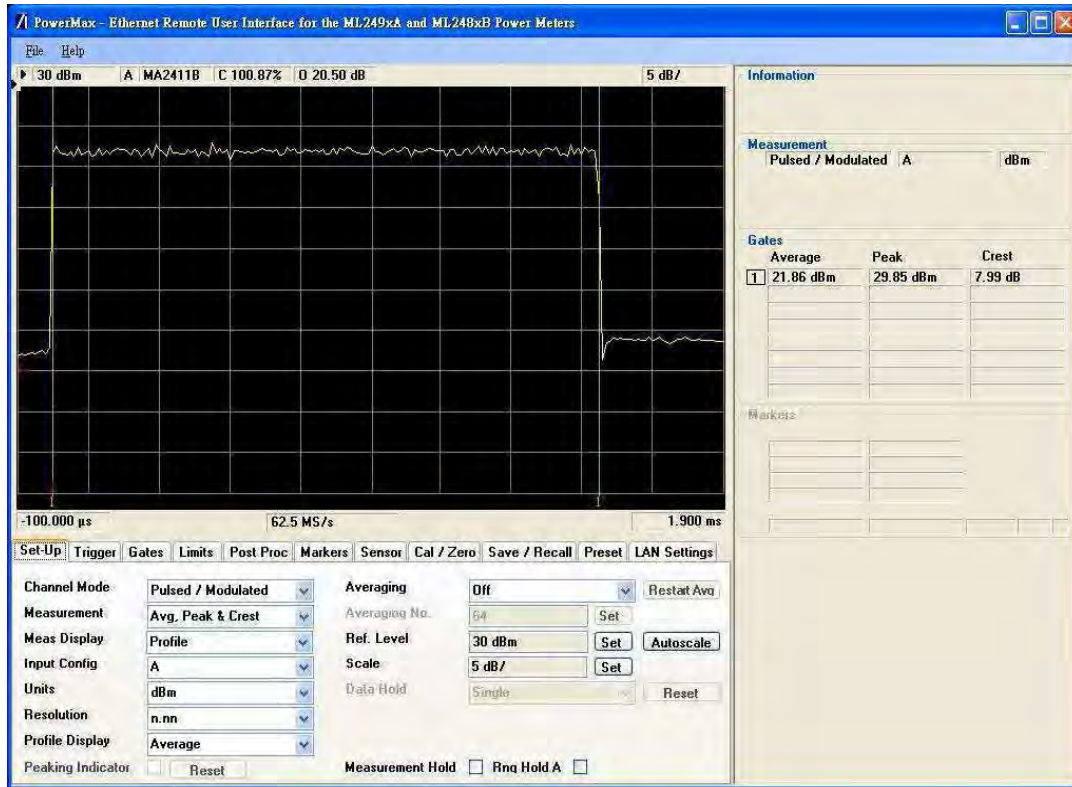


FREQUENCY 2587 MHz



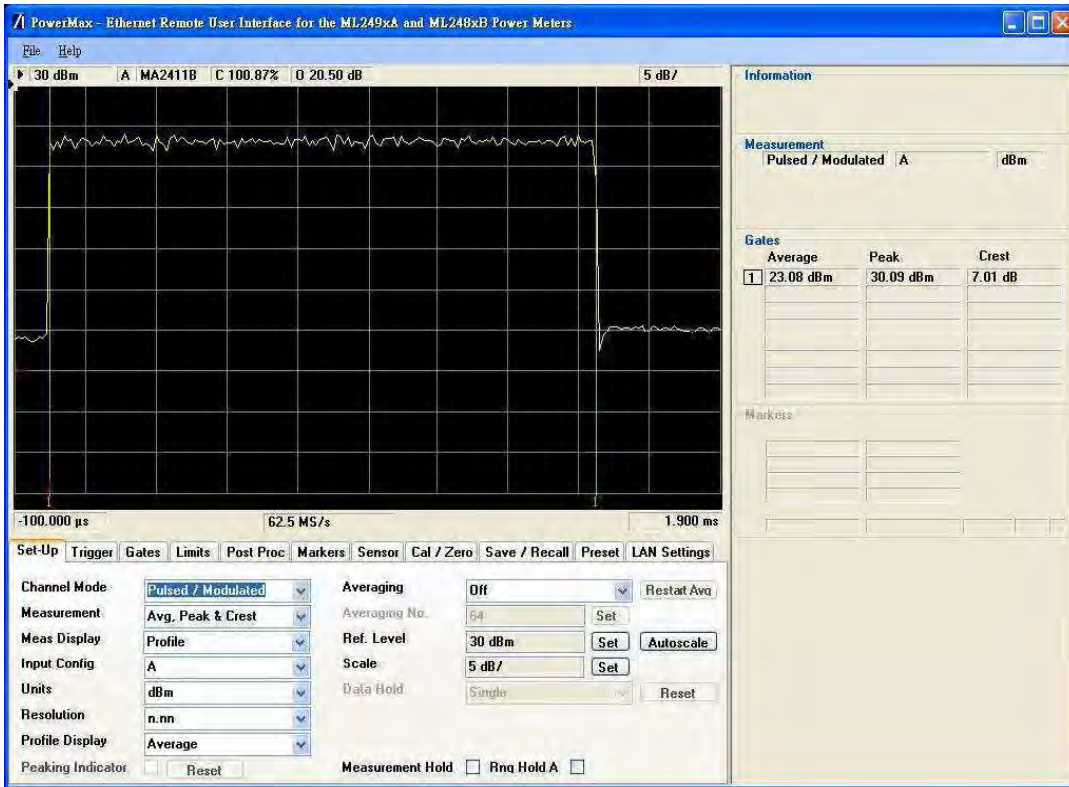
ZONE TYPE PUSC
MODULATION QPSK 3/4
BANDWIDTH 10MHz

FREQUENCY 2685 MHz

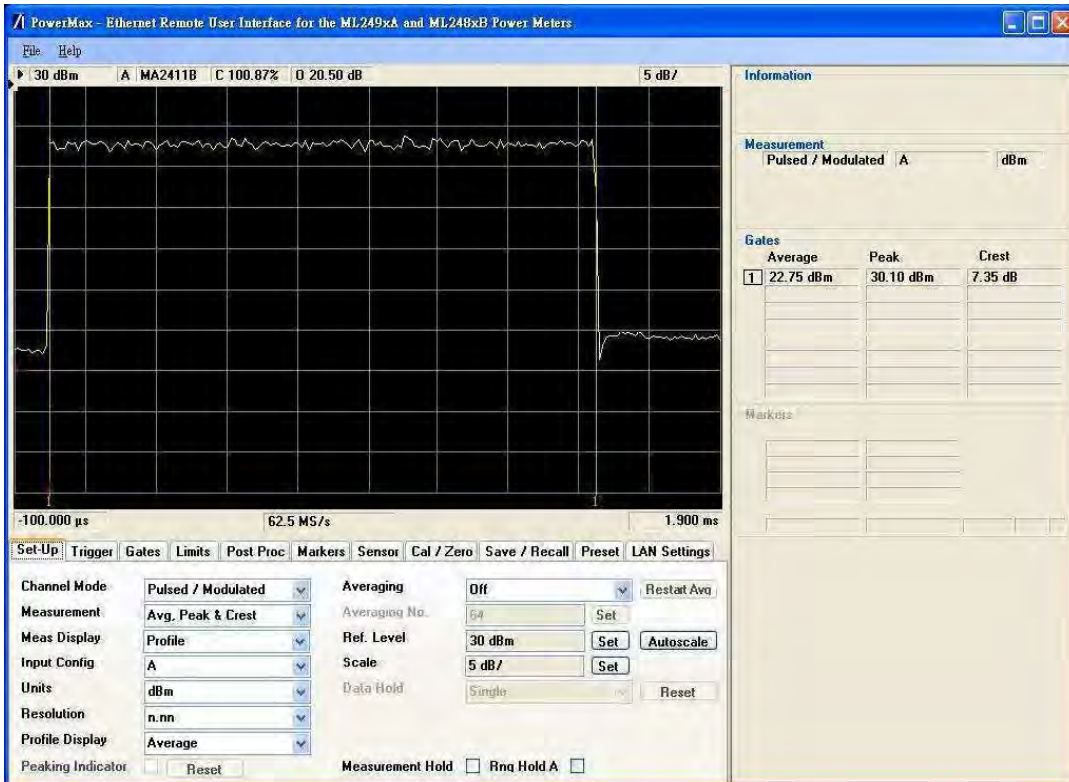


ZONE TYPE PUSC
 MODULATION 16QAM 1/2
 BANDWIDTH 10MHz

FREQUENCY 2501 MHz

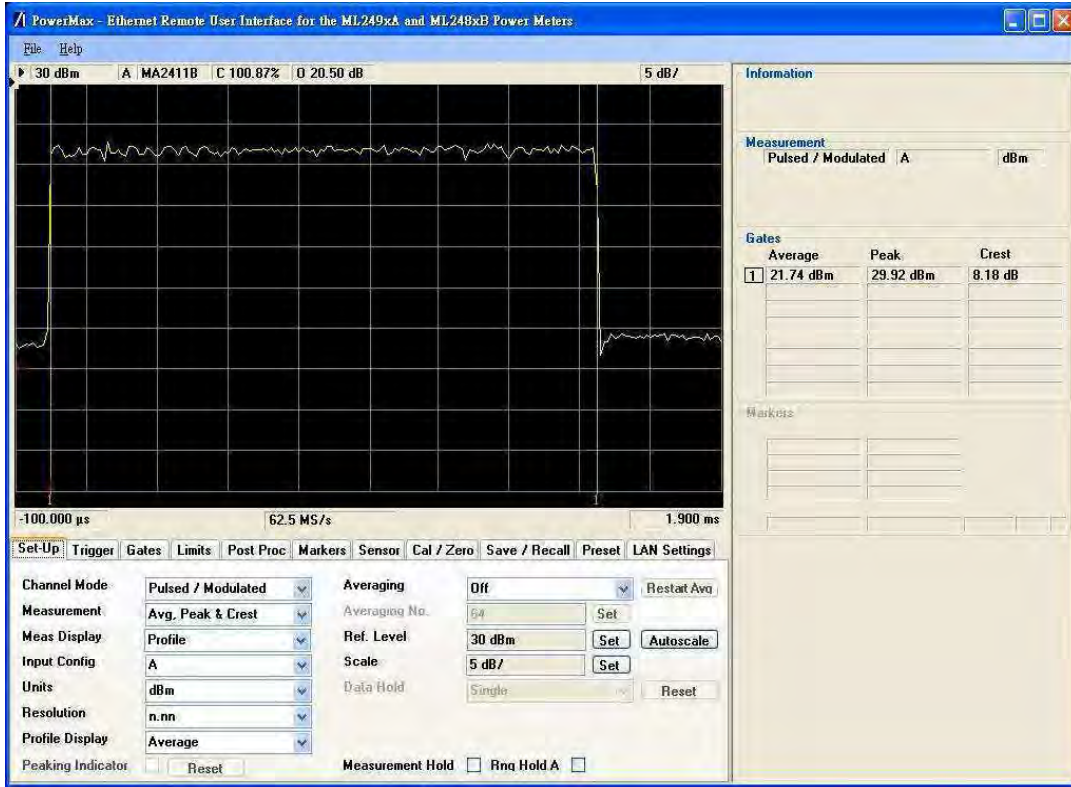


FREQUENCY 2587 MHz



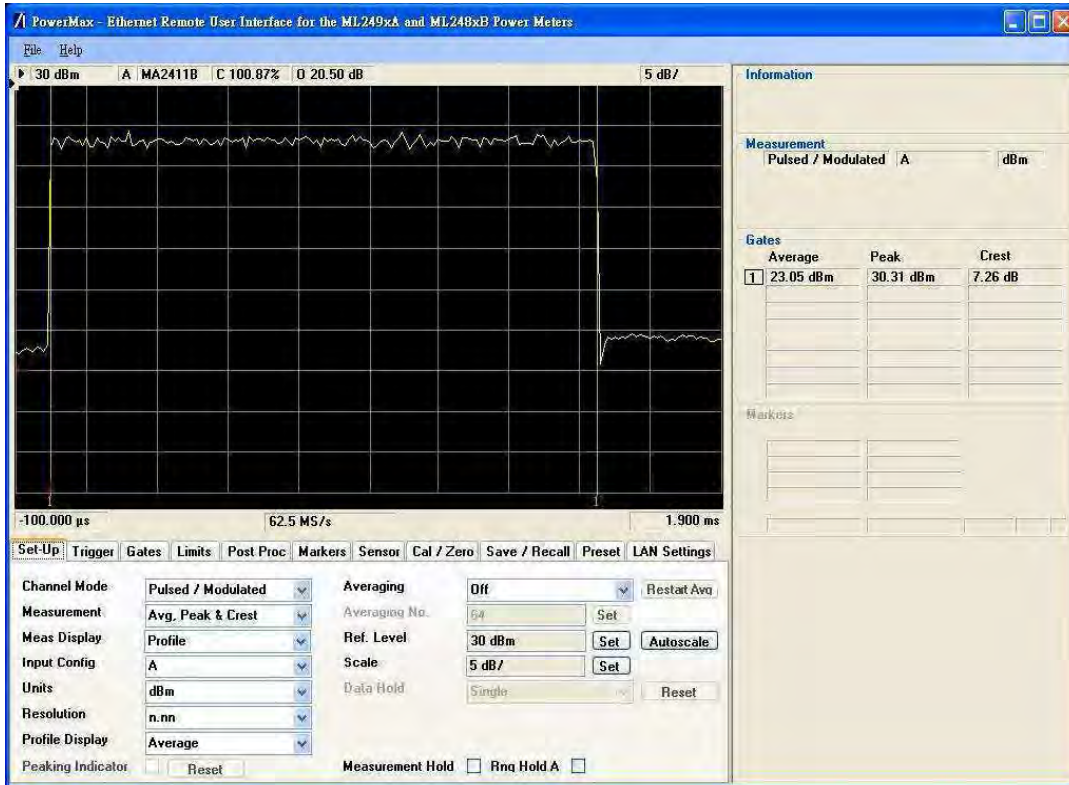
ZONE TYPE PUSC
MODULATION 16QAM 1/2
BANDWIDTH 10MHz

FREQUENCY 2685 MHz



ZONE TYPE PUSC
 MODULATION 16QAM 3/4
 BANDWIDTH 10MHz

FREQUENCY 2501 MHz



FREQUENCY 2587 MHz

