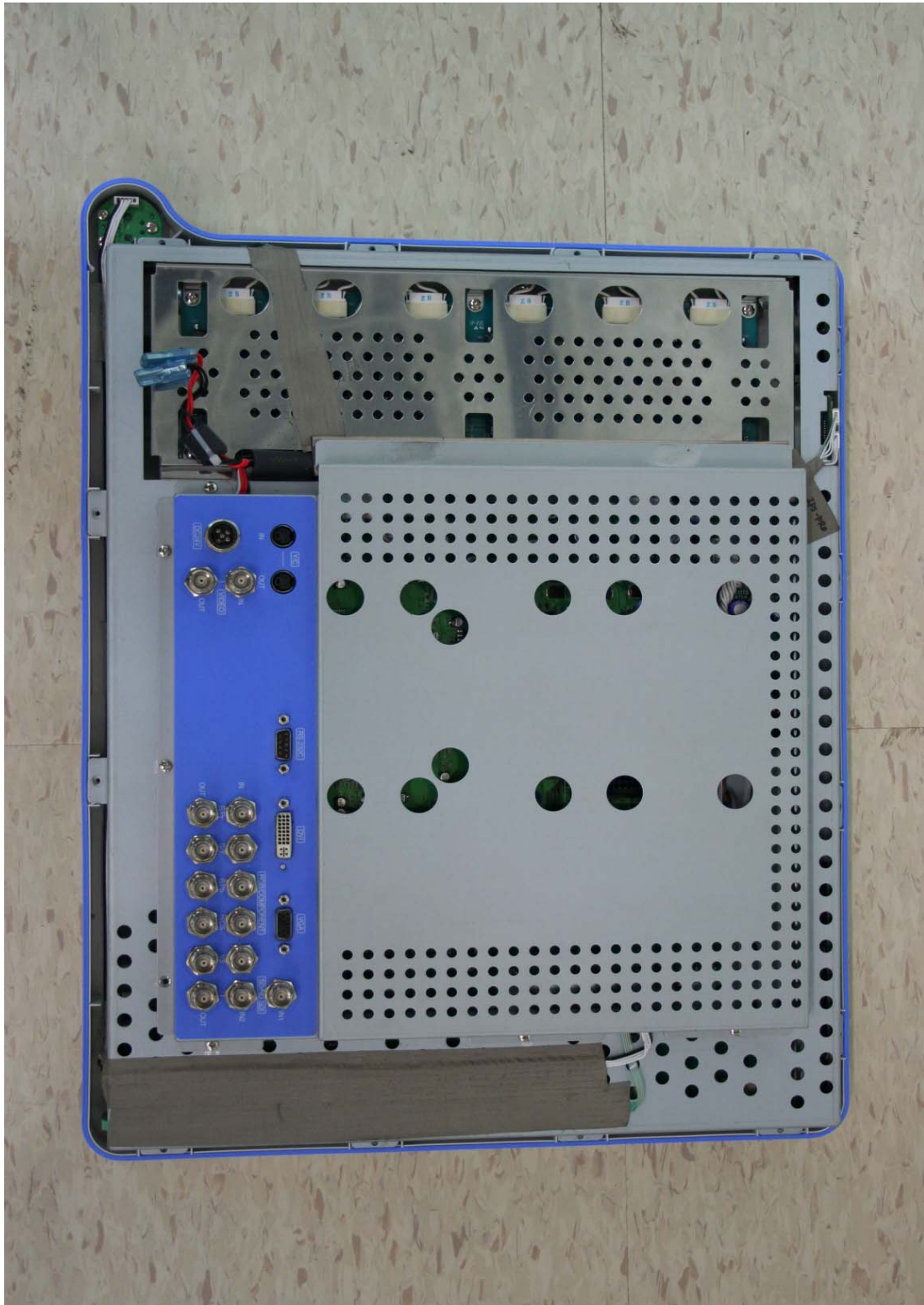
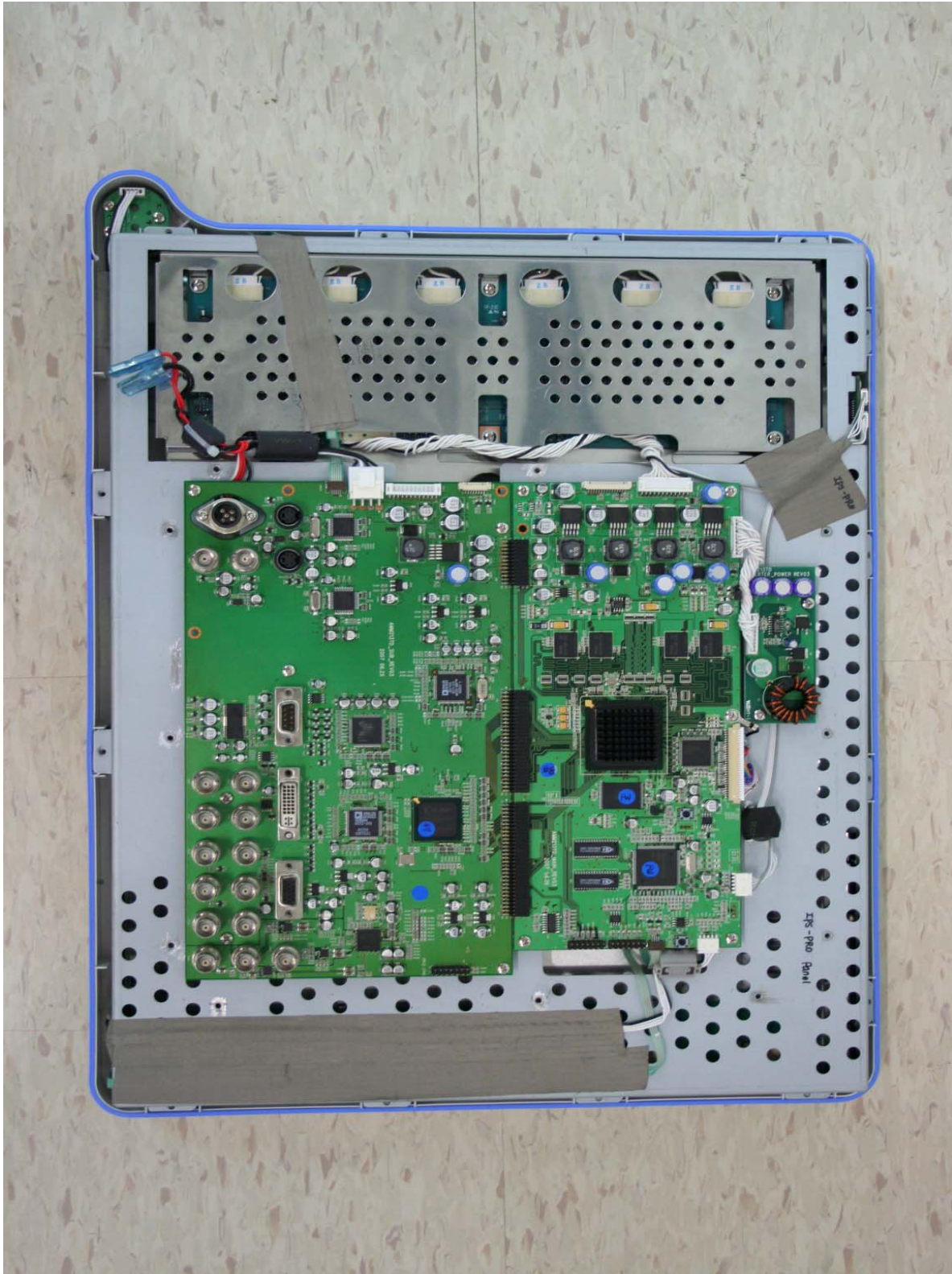


## INTERNAL PHOTOS

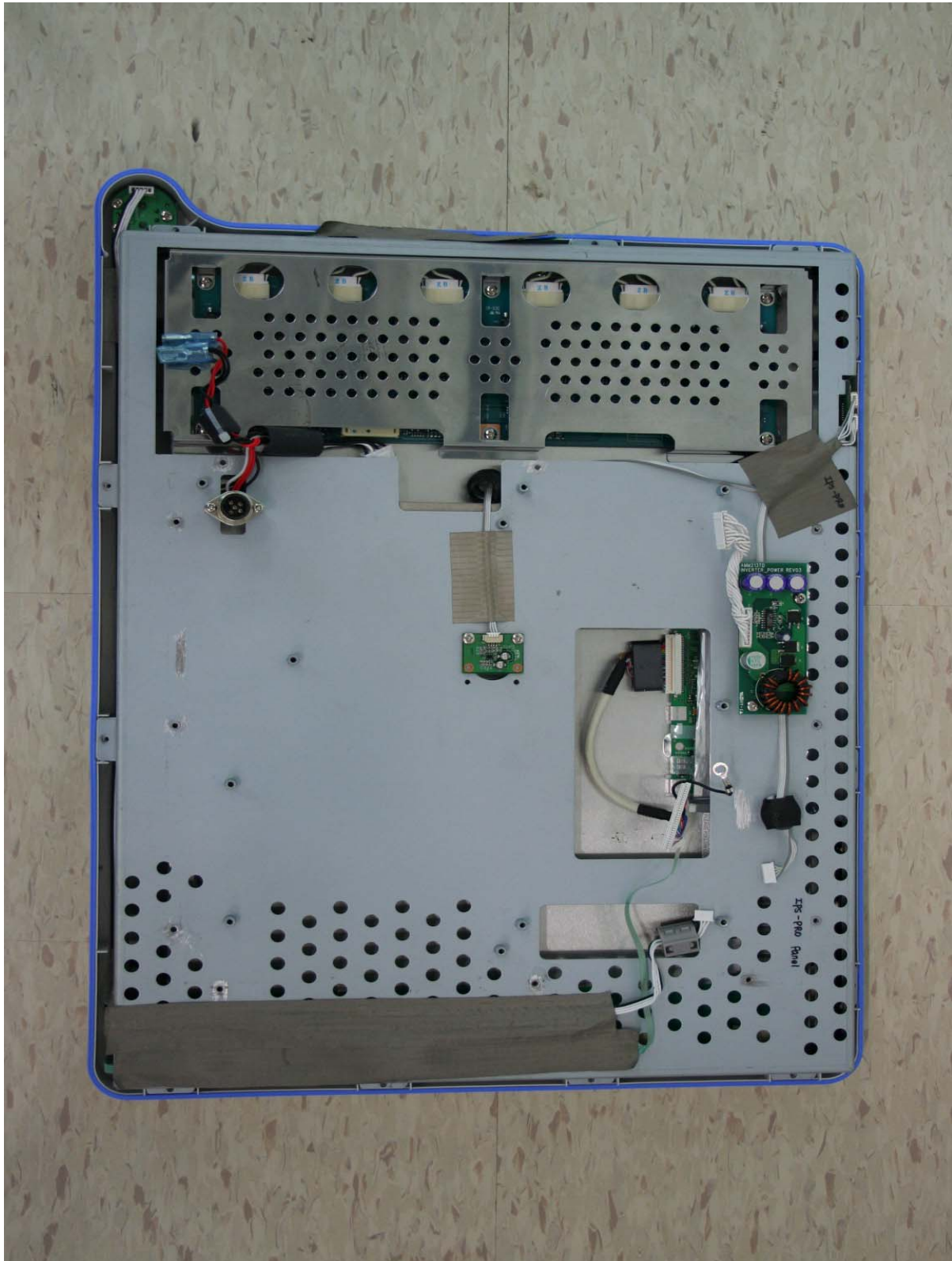
Inside I



**Inside II**



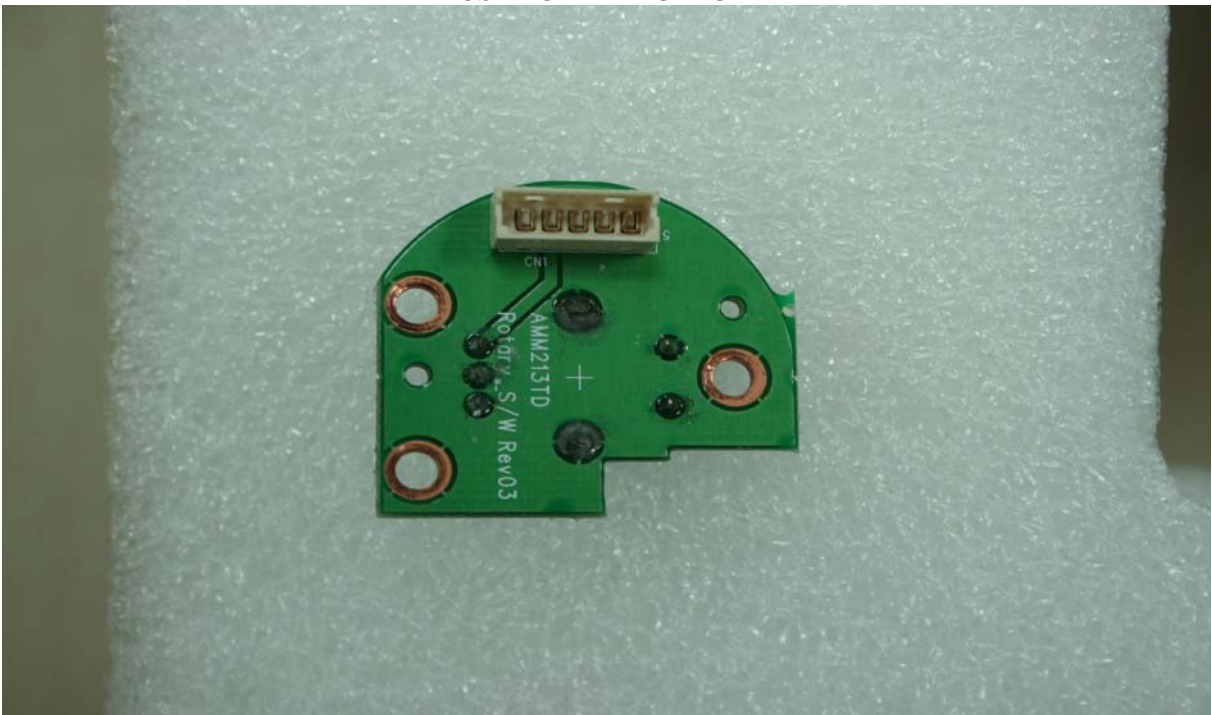
**Inside III**



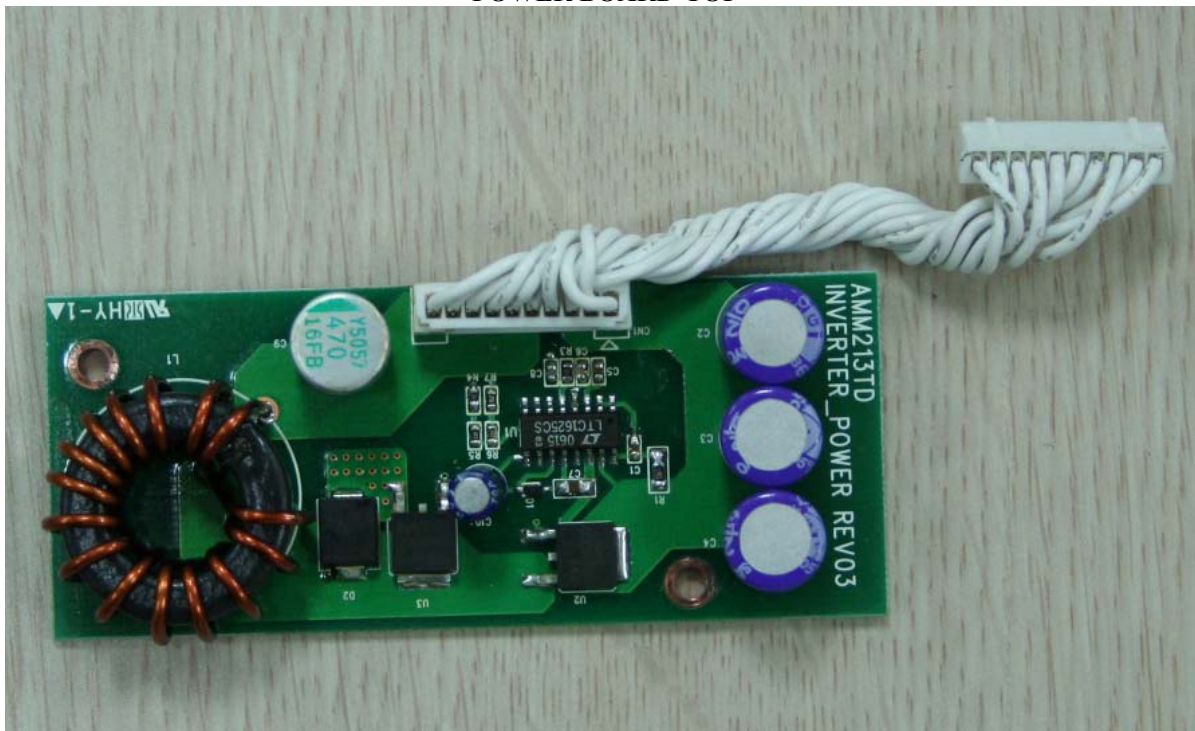
**OSD BOARD-TOP**



**OSD BOARD -BOTTOM**



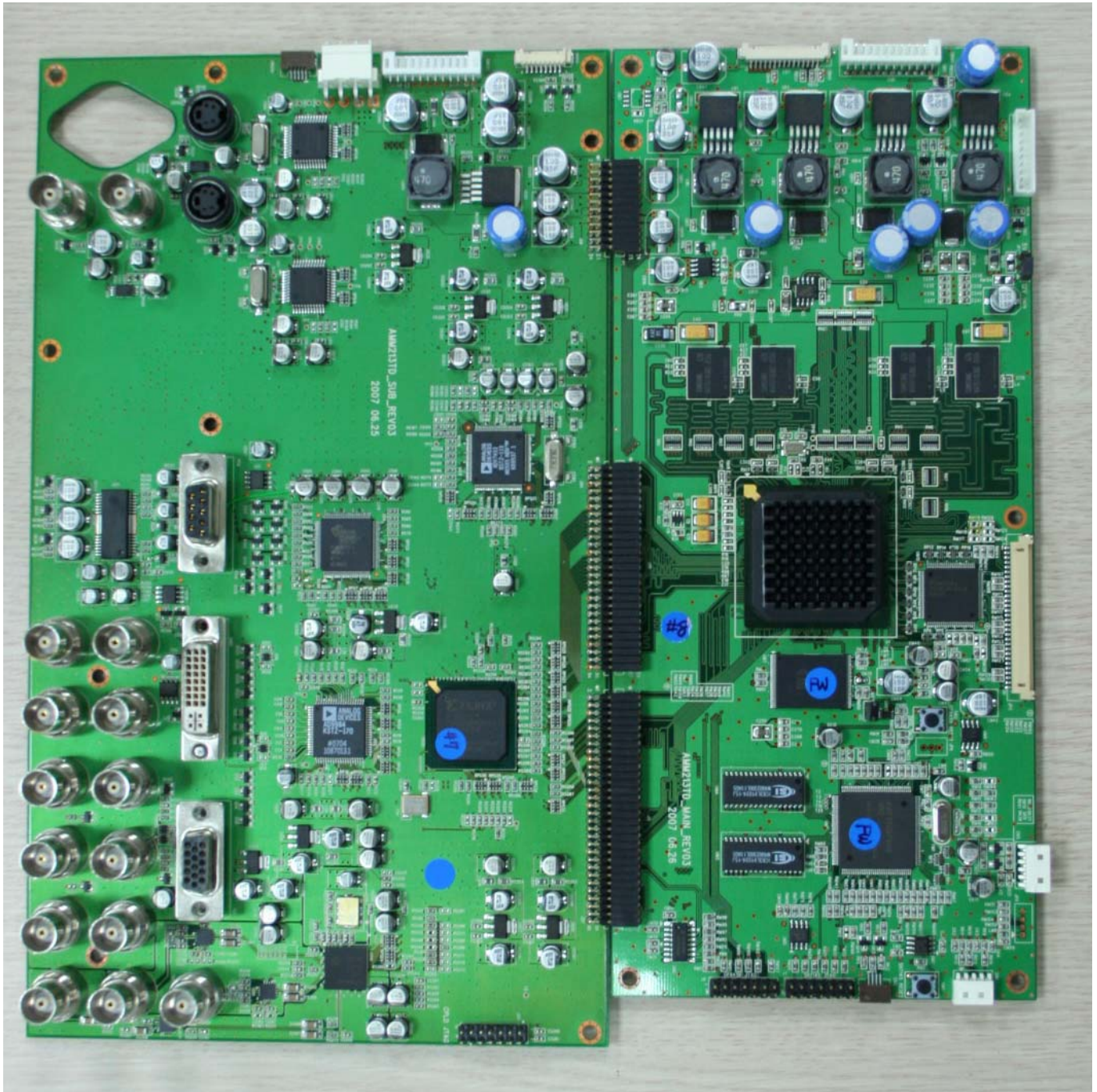
**POWER BOARD-TOP**



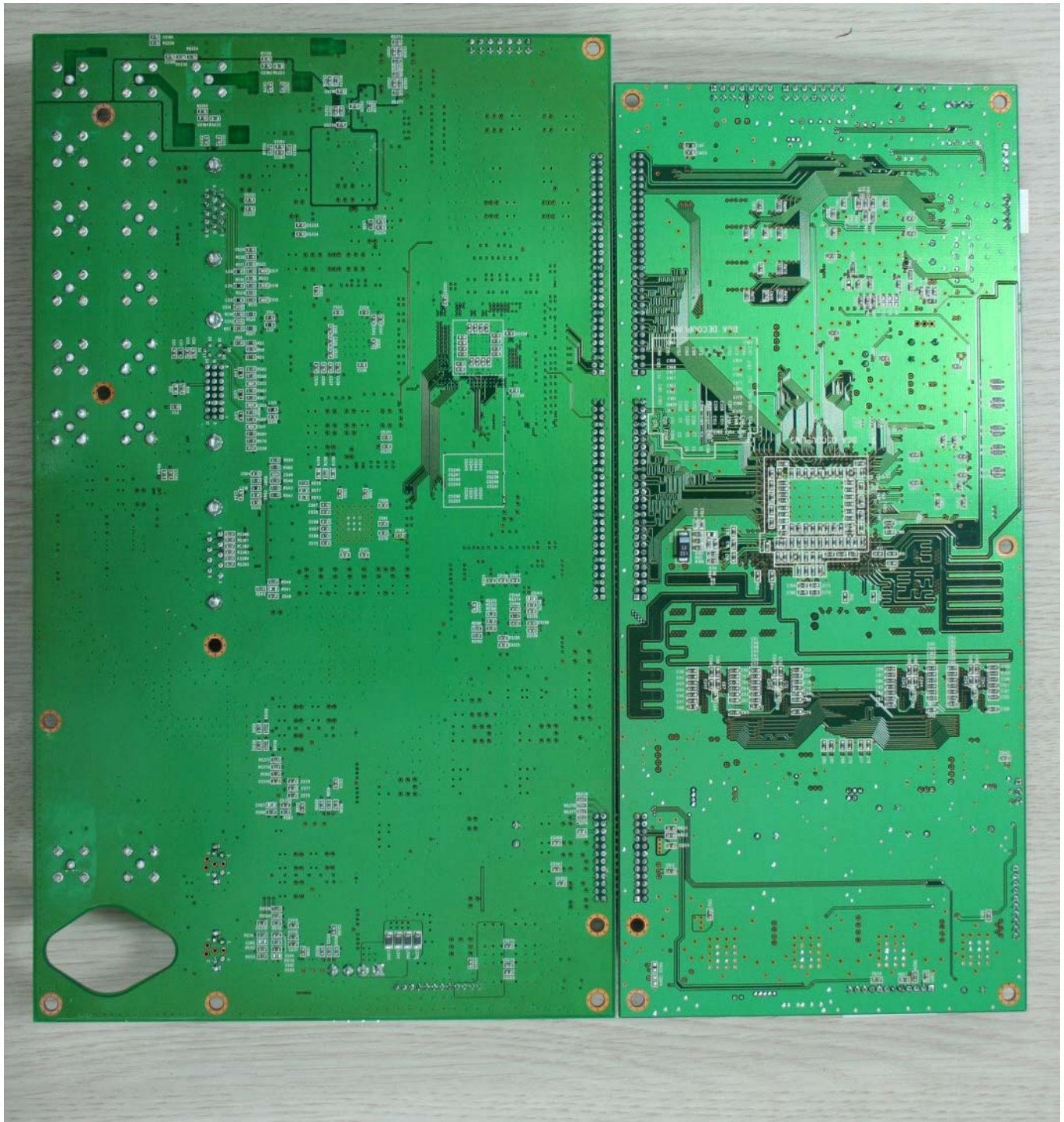
**POWER BOARD-BOTTOM**



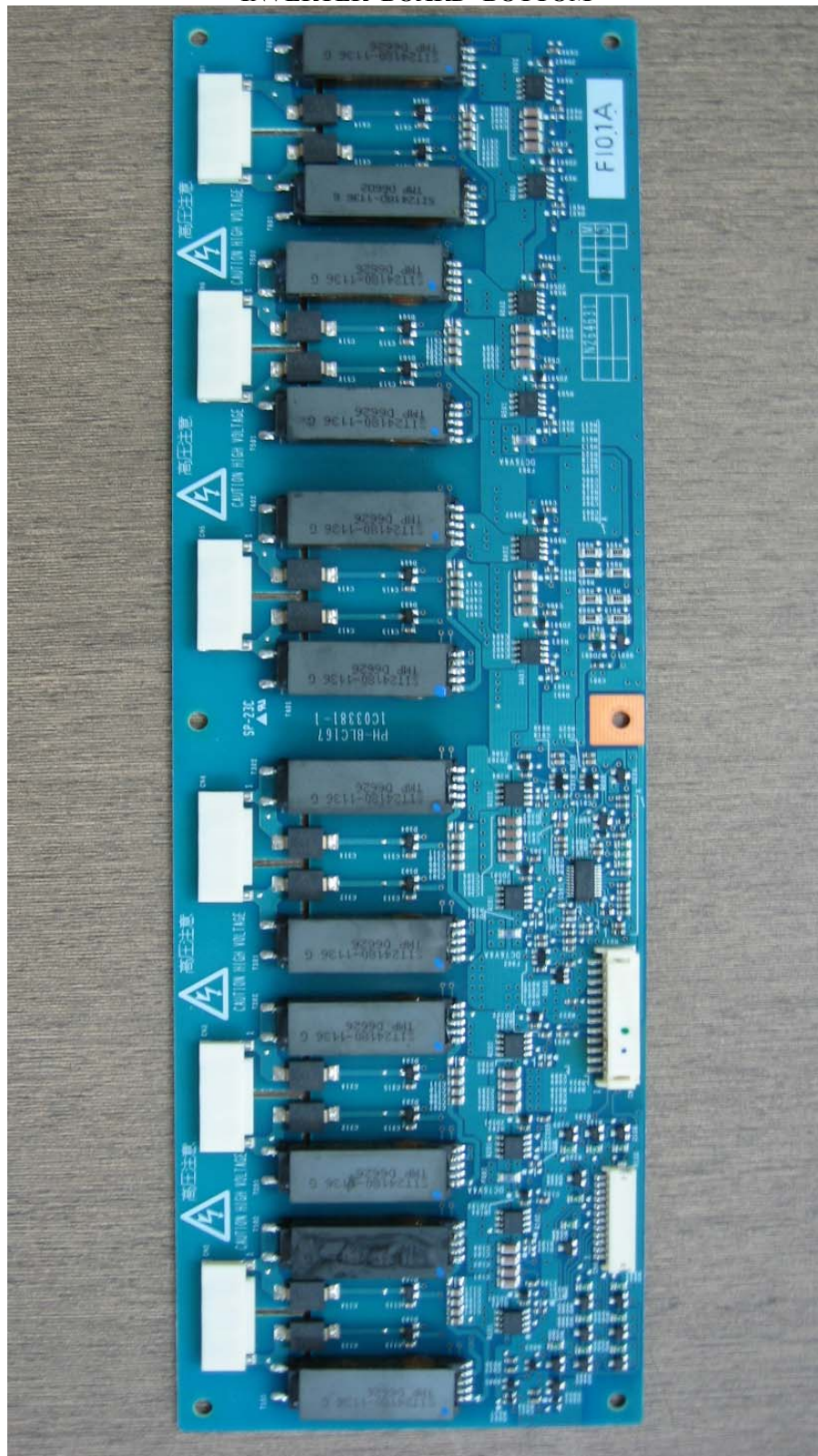
**MAIN BOARD-TOP**



**MAIN BOARD-BOTTOM**

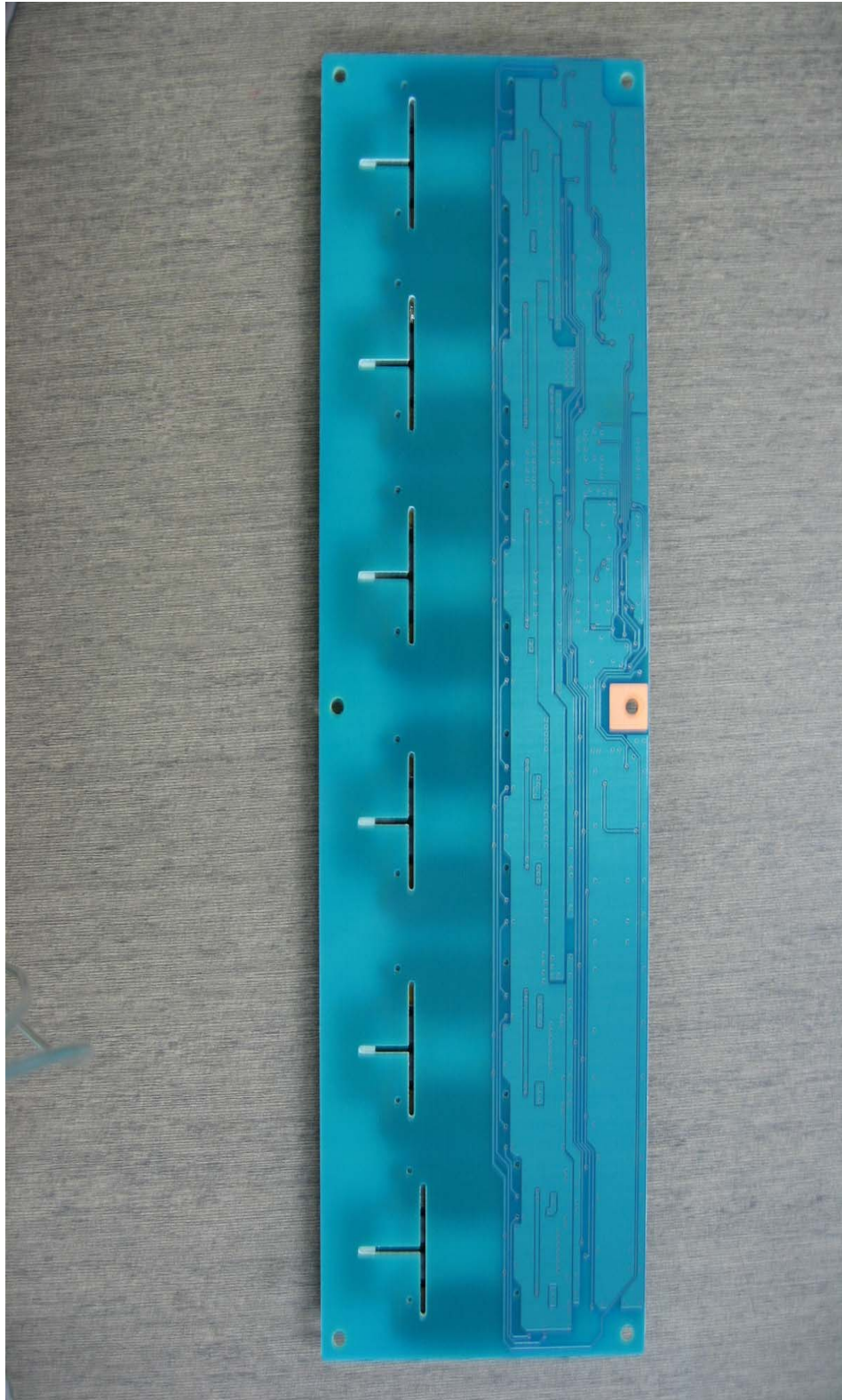


**INVERTER BOARD- BOTTOM**





**INTERFACE BOARD-BOTTOM**



**LCD PANEL –TOP (LCD Panel Model -TX54D31VC0CAB)**



**LCD PANEL – BOTTOM (LCD Panel Model -TX54D31VC0CAB)**



212001RL R 07302C  
Plm Sheet 25ETC  
Diffusing Board X0P<

HITACHI  
TX54D31VC0CAB  
Z034H 0930J  
Hitachi Ltd.  
Tokyo, Japan  
100-8330  
Hitachi Ltd.  
Tokyo, Japan  
100-8330

**LCD PANEL LABEL (LCD Panel Model -TX54D31VC0CAB)**



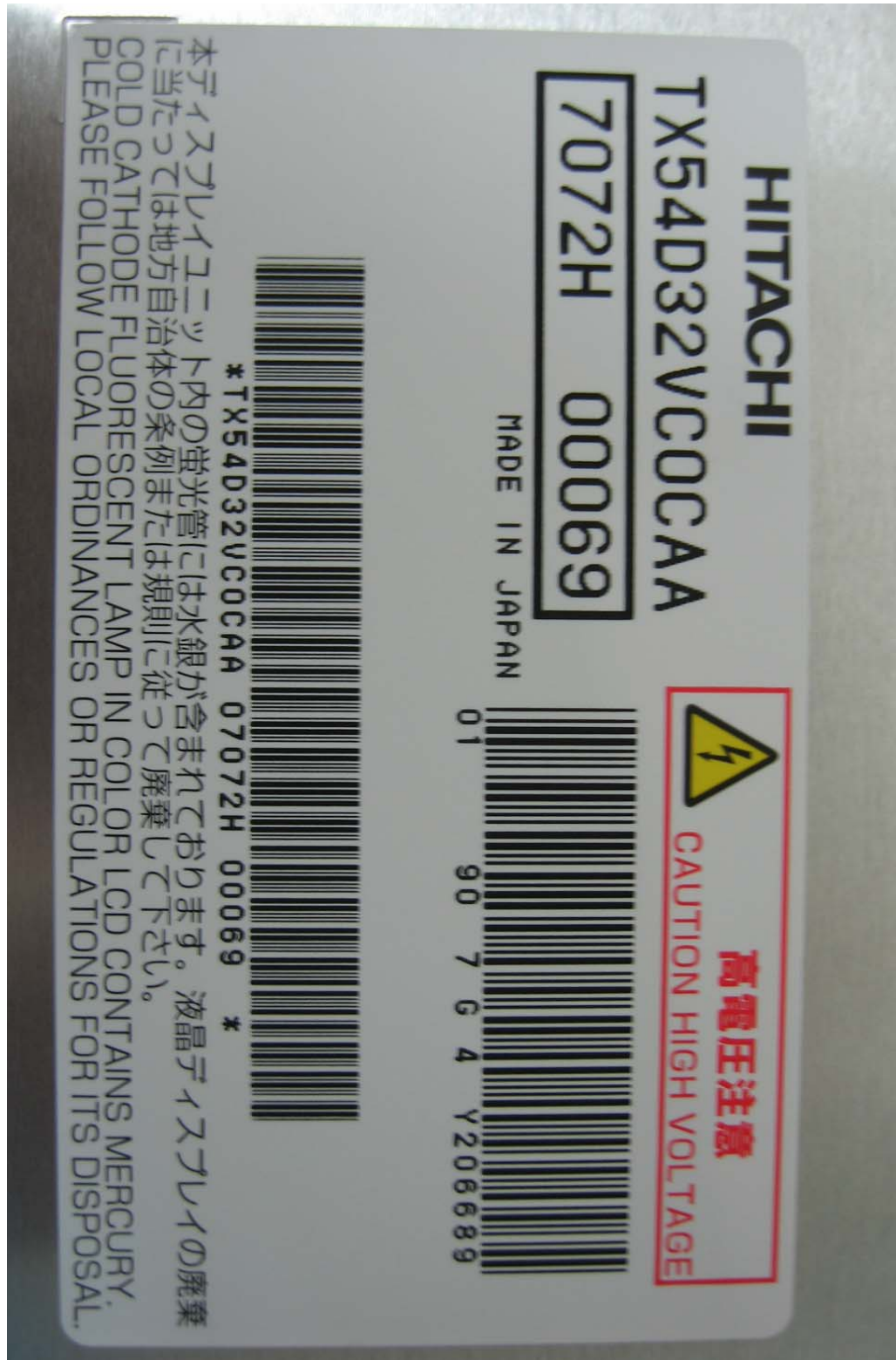
**LCD PANEL –TOP (LCD Panel Model -TX54D32VCOCAA)**



**LCD PANEL – BOTTOM (LCD Panel Model -TX54D32VC0CAA)**



LCD PANEL LABEL (LCD Panel Model -TX54D32VC0CAA)



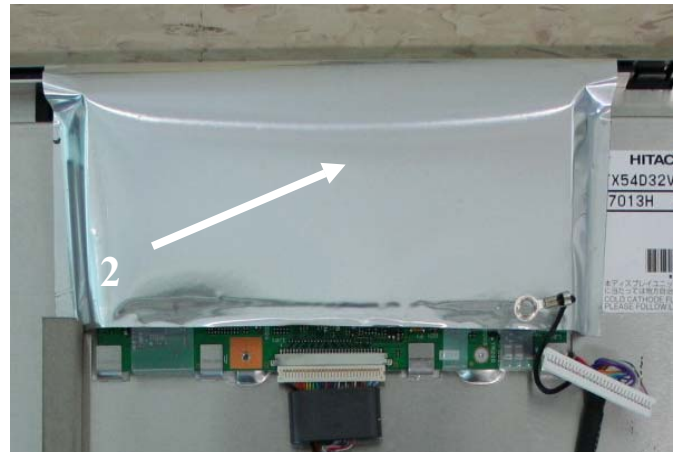
## 6. EUT Modification

### EUT Modification for Radiation Disturbance

#1	Attach the EMI form gasket (10x15x230mm) at this 2 points to make strong ground contact with main frame
#2	Adhere EMI tape at this points to make more strong ground contact
#3	Attach tape to fix light-sensor cable
#4	Insert the ring style ferrite core (SCC Co., Ltd. Type: TC18A) to light-sensor cable.
#5	Adhere EMI tape FFC cable to make shielding ground
#6	Insert the ring style ferrite core (SCC Co., Ltd. Type: TC18A) to sensor cable.
#7	Insert the ring style ferrite core (SCC Co., Ltd. Type: TC18A) to OSD cable.
#8	Adhere EMI tape OSD cable to make shielding ground.
#9	Adhere EMI tape to make more strong ground contact.
#10	Insert the ring style ferrite core (SCC Co., Ltd. Type: SC18A /SC14) to power cable.
#11	Attach the EMI form gasket (14x4x235mm, I/O gasket) to enhance main frame and shield cover contact.
#12	Attach the EMI form gasket (14x4x220mm) to enhance shield case and rear cover contact

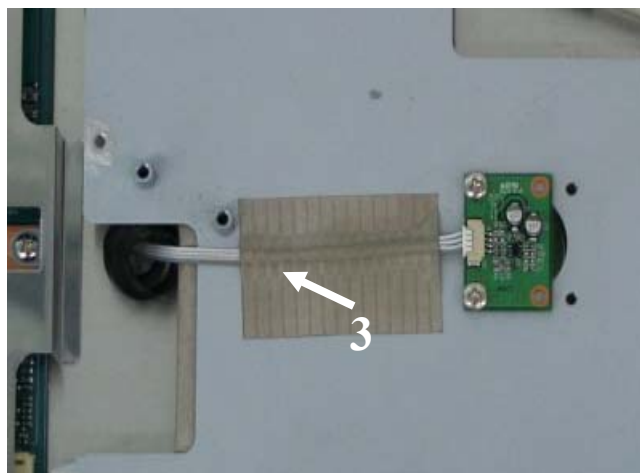


#1

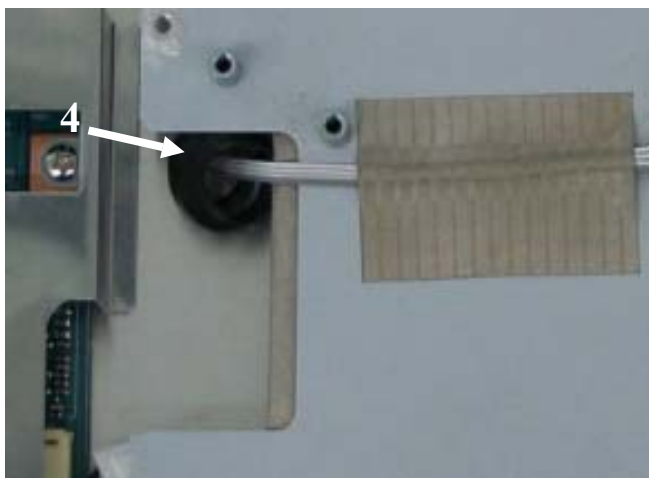


#2

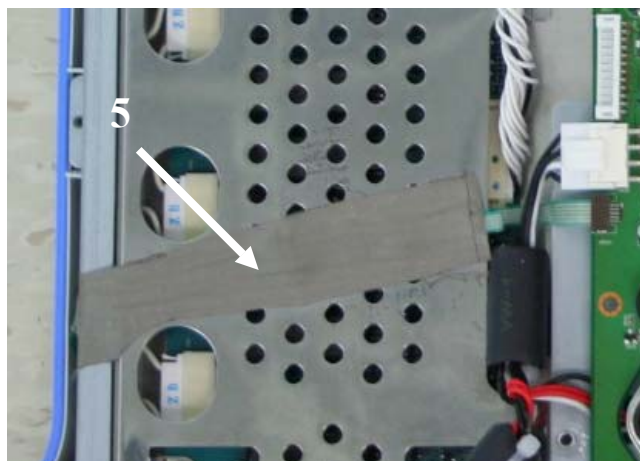




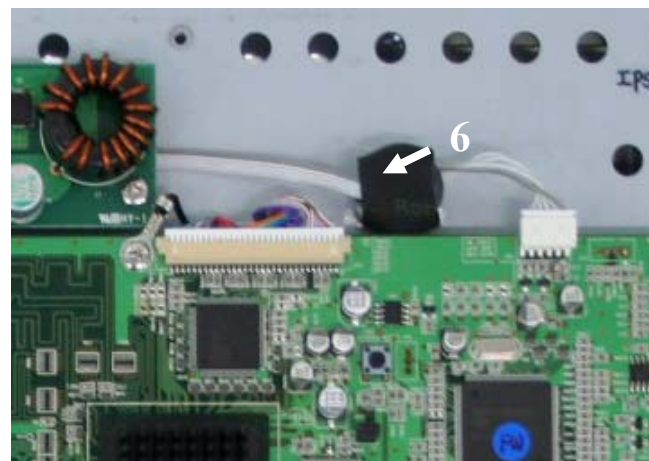
#3



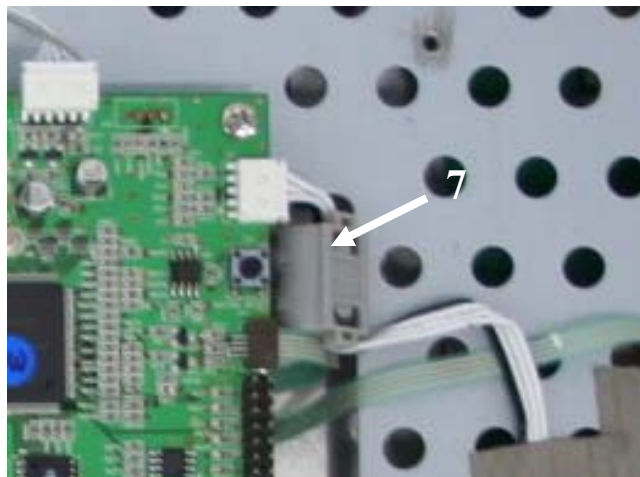
#4



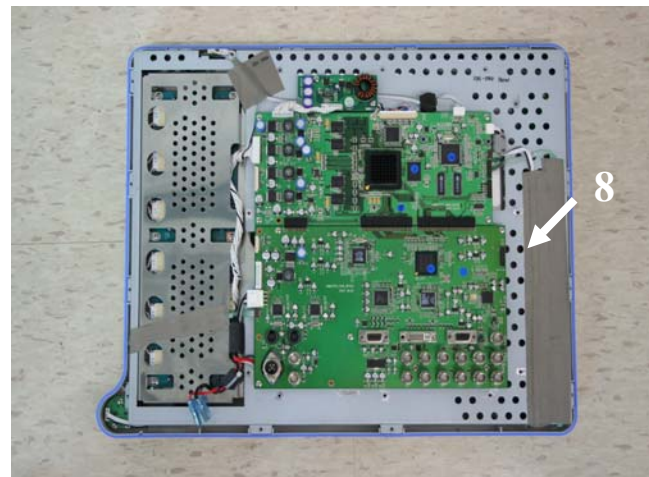
#5



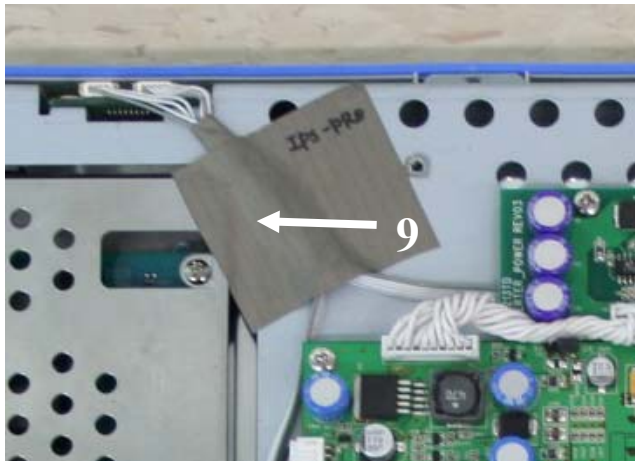
#6



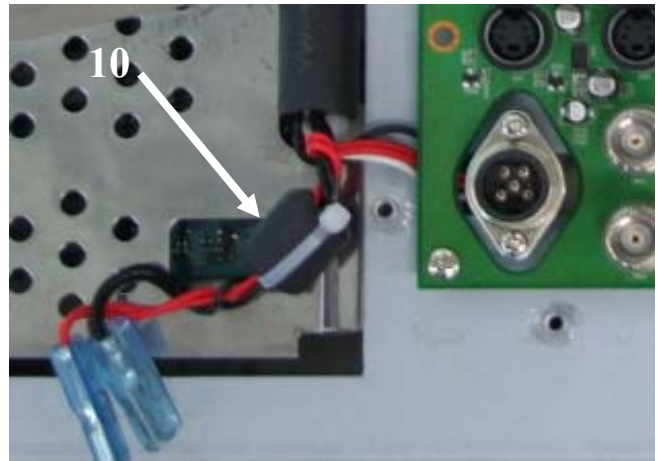
#7



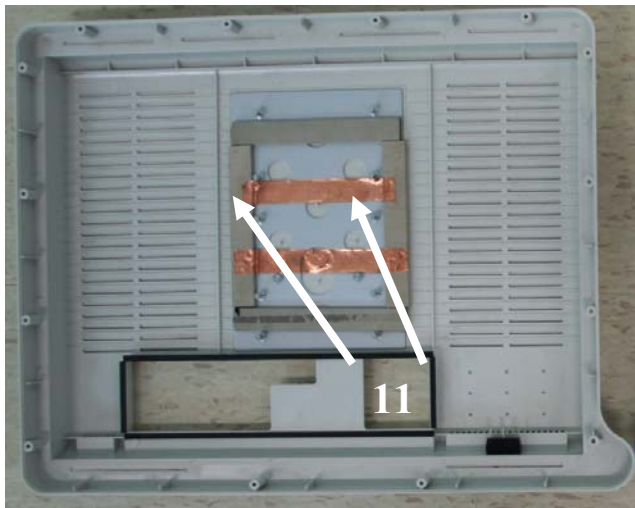
#8



#9



#10



#11



#12