

USER MANUAL

MODEL:

Wireless wall mount remote control Transmitter. Model no. 101239-0001 (Fig2)

Trade name : FLATWIRE READY WIRELESS TRANSMITTER

Wireless wall mount remote control Receiver. Model no. : 101238-0001 (Fig 1)

Trade name : FLATWIRE READY WIRELESS RECEIVER.

FEATURES

- **Learning function, easy operation.**
- **Receiver has 6 memory settings, no memory loss forever.**
- **Red LED indicator for POWER ON and MEMORY SETTINGS.**

INSTALLATION:

Controller (Receiver)

- Just plug the receiver into wall outlet (fig. 1)
- LED indicator on receiver should light on.

● .

Remote control (Transmitter)

- Remote control till 30M in open area (fig. 2)
- the transmitter send signal to receiver on while pressing the button.

OPERATION :

TRANSMITTER

Press ON (UP) – control receiver ON

Press OFF(down) – switch OFF function

ON/OFF RECEIVER

- * Press transmitter button 'ON' to switch on.
- * Press transmitter button 'OFF' to switch off.



Fig 1

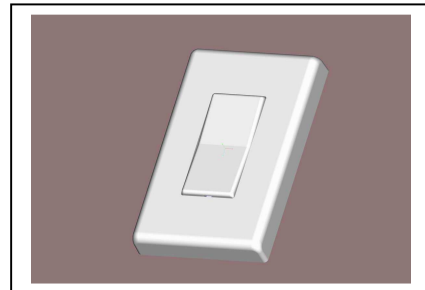
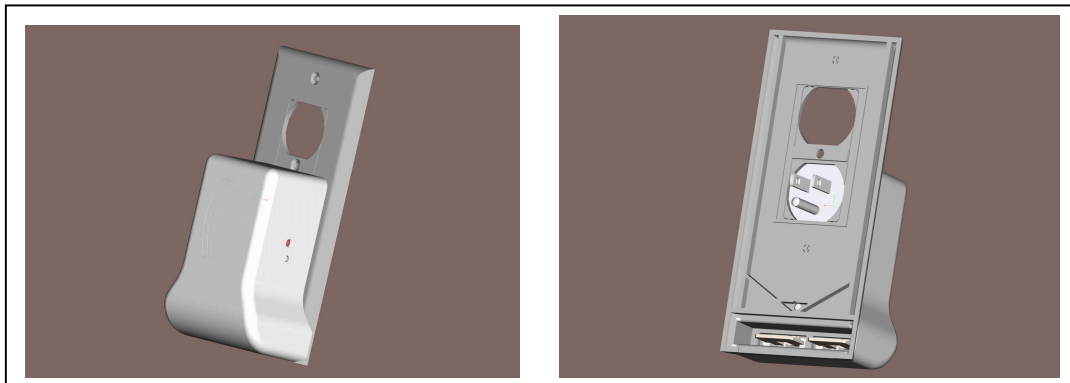


Fig 2



HOW TO SET CODE: learning function

- * To start, program your transmitter with the receiver.
- * Receiver plugged on power outlet (fig.1).
- * Bring the transmitter near the receiver, push the learning button on receiver once (fig. 2)
- * Receiver LED will blink slowly, press transmitter selected “ON” button
- * Receiver connected lamp will blink twice, code is confirmed and LED stops blinking.
 - Remember the transmitter button you selected for the programmed receiver.

TO CHANGE OR DELETE CODE :

DELETING INDIVIDUALLY

- * Push the learning button once, LED will blink slowly
- * Press selected “**OFF**” button on transmitter, programmed memory is deleted.
- * Receiver connected lamp will blink twice for confirmation.
- * Repeat step for re-setting.

- ALL MEMORY DELETE -

- * Push the learning button for 6 sec., LED will blink continuously
- * Release and push again once.
- * Receiver connected lamp will blink twice for confirmation.
- * **ALL PROGRAMMED MEMORY WILL BE DELETED FROM RECEIVER**

RECEIVER HAS 6 MEMORY SETTINGS

- * Learning function RECEIVER has 6 memory settings.
- * It can be programmed as to your requirement with special effect. It can be programmed to switch ON at one time individually or programmed with different combinations switching.

SPECIFICATION

TRANSMITTER

3V CR2032 BATTERY

Class: III

Pollution Degree: 2

T(max): 35°C

RECEIVER

IP : 20

Class: I

Pollution Degree: 2

Duty type: S1

Operating cycles: 10,000

Glow-wire test level: 3

Protection device: thermal-link

T(max): 45°C

Frequency: 433.92MHz

Power input : 120VAC ~ +/-10%,60Hz

Output Wattage : 60 W

Output Voltage : 12V AC RMS FOR LOW VOLTAGE HALOGEN LIGHT

Remote dimmer.

FAULT FINDING

No activation: Check battery direction or running out battery

CAUTION:

Do not place two receivers near each other, the distance should be above 1 meter.

Warning!

DO NOT OVERLOAD

Do not plug or use in damp places like patios, cellar, flammable liquid, solvents, paints etc

The receiver must be disconnected or away from main power line for changing of coding on the code switch

Manufacturing site:

HOMEWELL Electronics Co., Ltd.

Address: NO.7~8 Building, the 5th. Industrial Park, Xia Village Gong Ming Town, Baoan District, Shenzhen city, China

Federal Communication Commission Interference Statement

This equipment has been tested and found to comply with the limits for a Class B digital device, pursuant to Part 15 of the FCC Rules. These limits are designed to provide reasonable protection against harmful interference in a residential installation. This equipment generates, uses and can radiate radio frequency energy and, if not installed and used in accordance with the instructions, may cause harmful interference to radio communications. However, there is no guarantee that interference will not occur in a particular installation. If this equipment does cause harmful interference to radio or television reception, which can be determined by turning the equipment off and on, the user is encouraged to try to correct the interference by one of the following measures:

- Reorient or relocate the receiving antenna.
- Increase the separation between the equipment and receiver.
- Connect the equipment into an outlet on a circuit different from that to which the receiver is connected.
- Consult the dealer or an experienced radio/TV technician for help.

FCC Caution: Any changes or modifications not expressly approved by the party responsible for compliance could void the user's authority to operate this equipment.

This device complies with Part 15 of the FCC Rules. Operation is subject to the following two conditions: (1) This device may not cause harmful interference, and (2) this device must accept any interference received, including interference that may cause undesired operation.