

Annex B.ii. Photograph 2: EUT Internal Photo



Cover Off - Rear View1



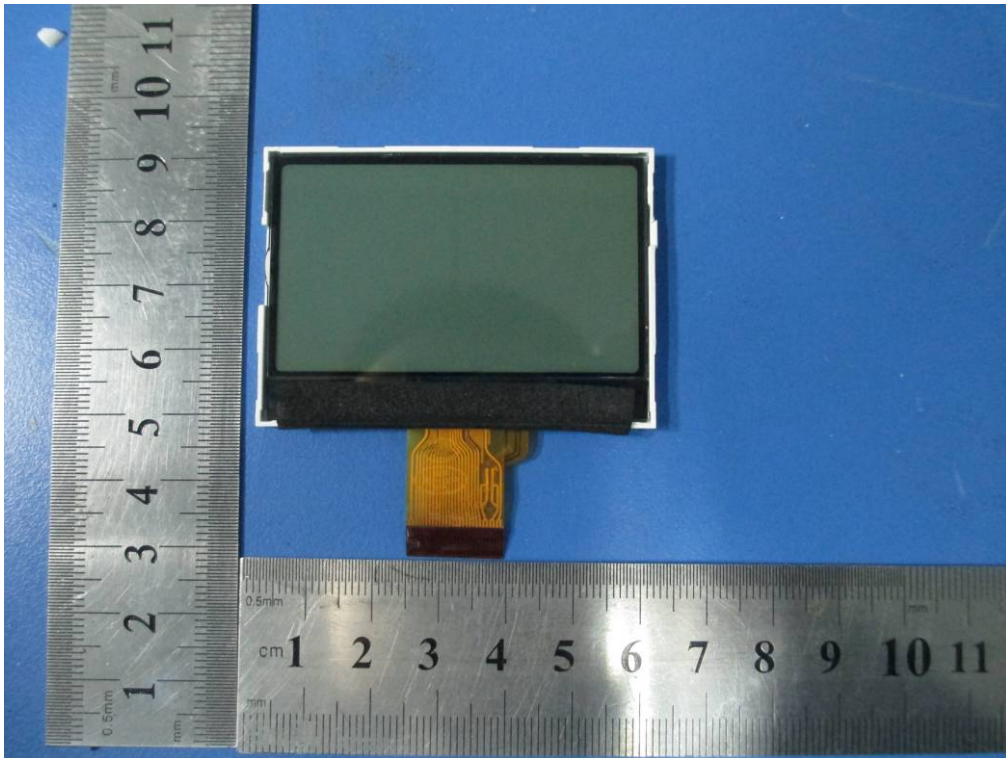
Cover Off - Rear View2



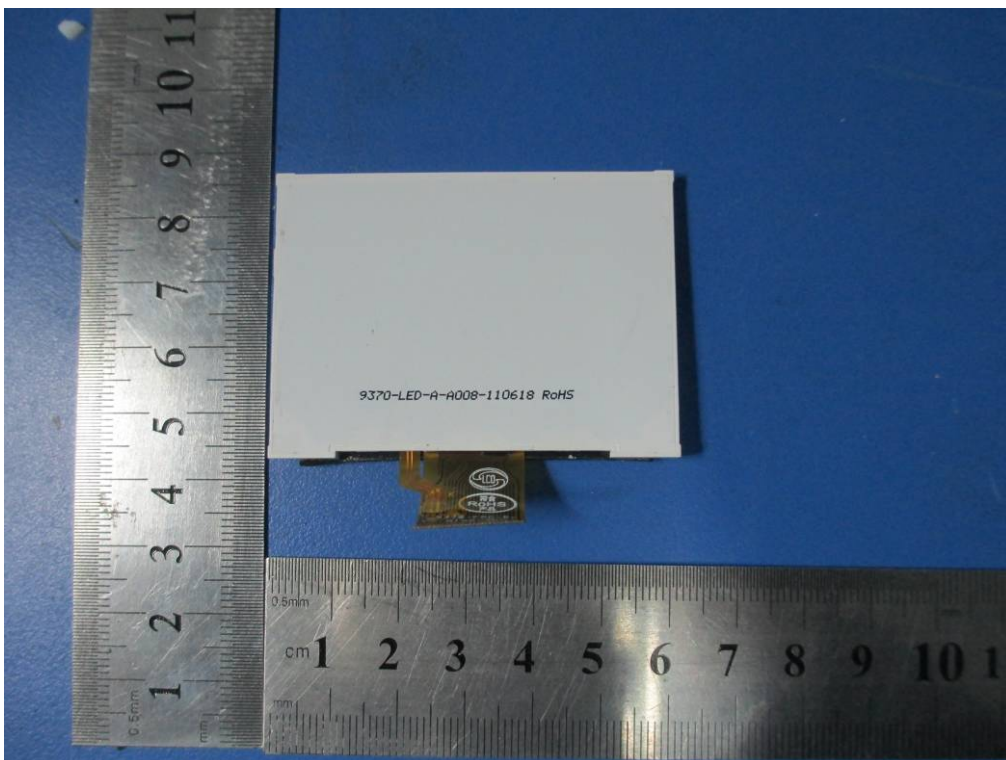
SIEMIC, INC.

Title: EMC Test Report for Wireless POS Terminal
Main Model: T800
Serial Model: N/A
To: FCC Part 15 Subpart B Class A: 2012, ANSI C 63.4: 2009

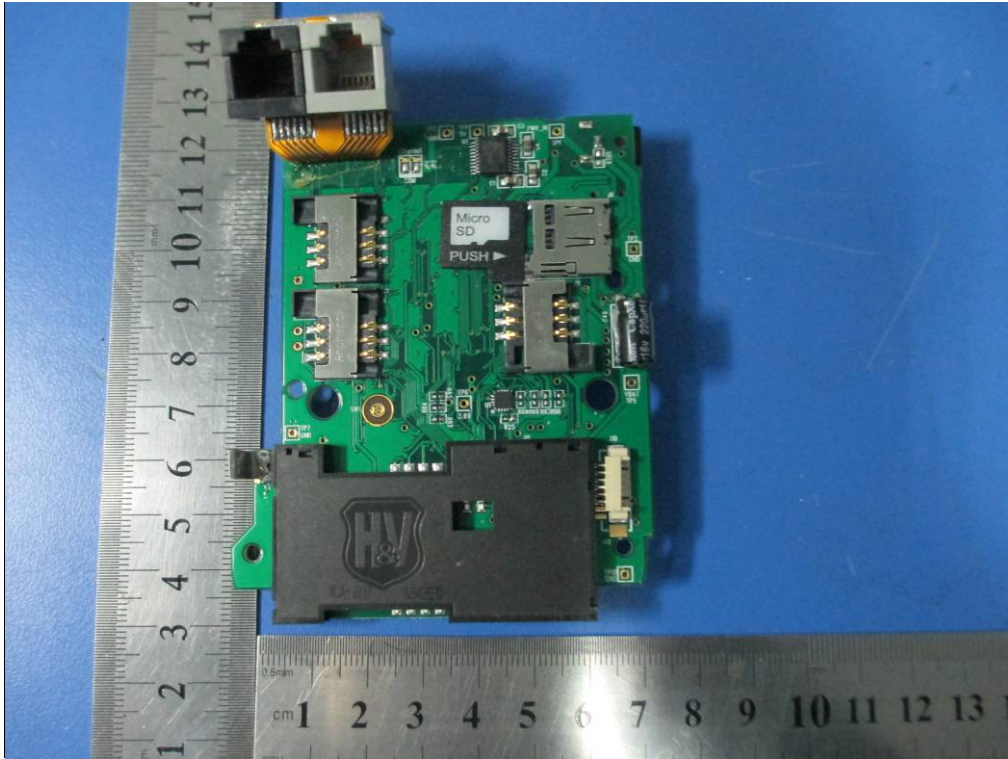
Report No: 12070018-FCC-E
Issue Date: February 27, 2013
Page: 24 of 38
www.siemec.com.cn



LCD - Top View



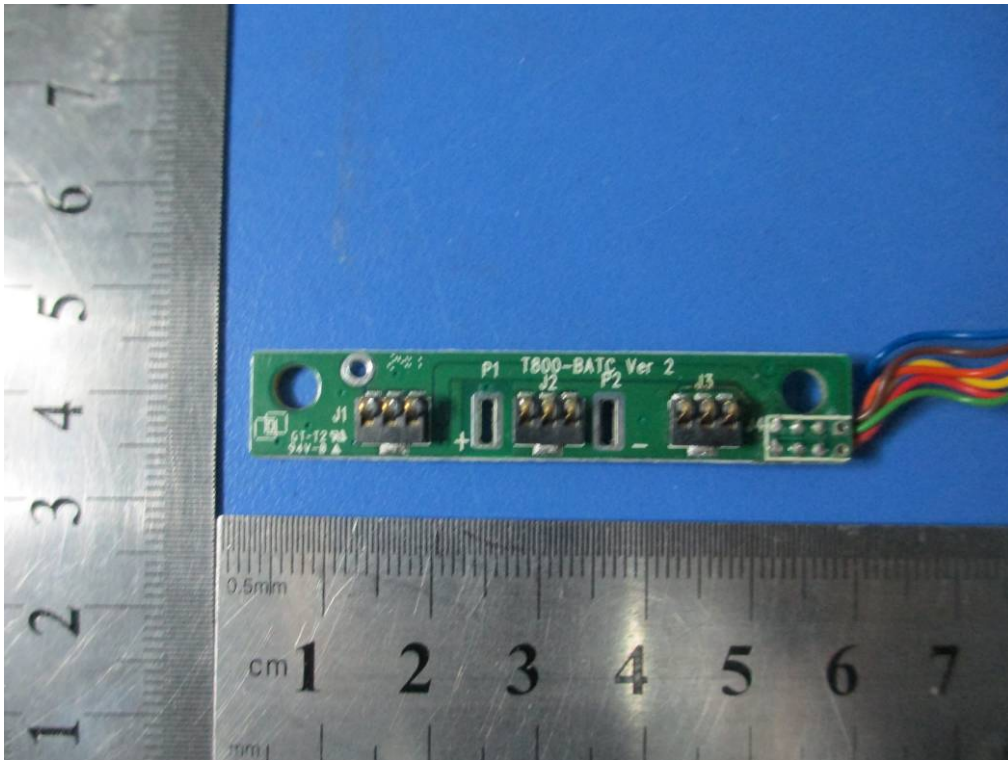
LCD - Bottom View



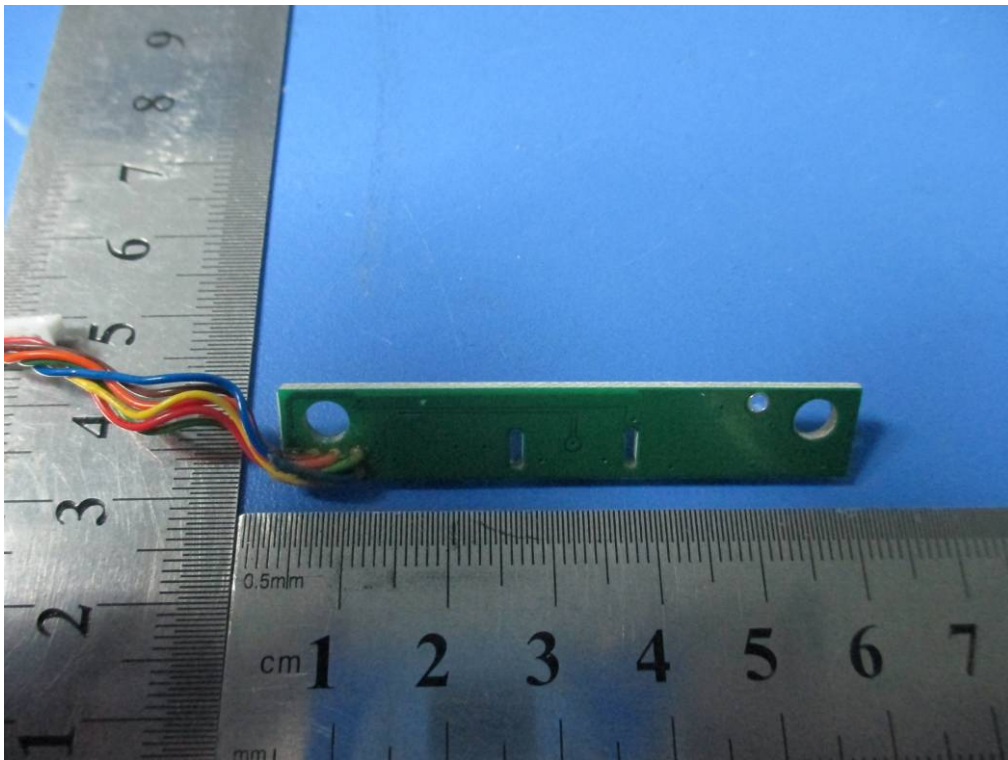
EUT PCB Board 1 - Top View



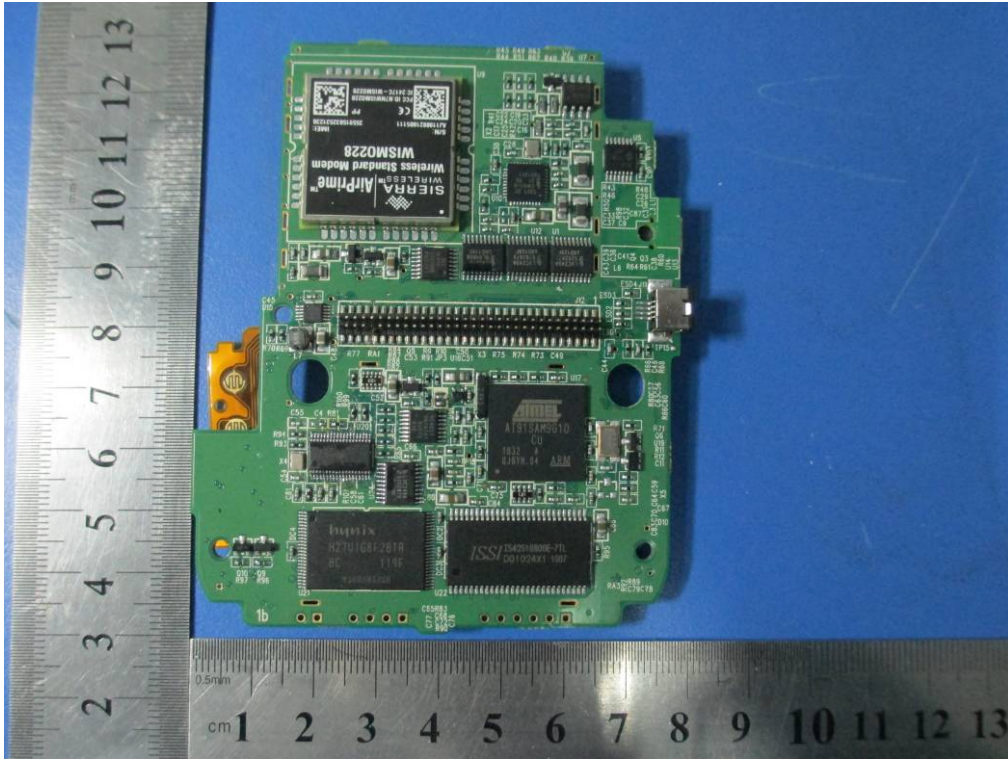
EUT PCB Board 1 - Bottom View



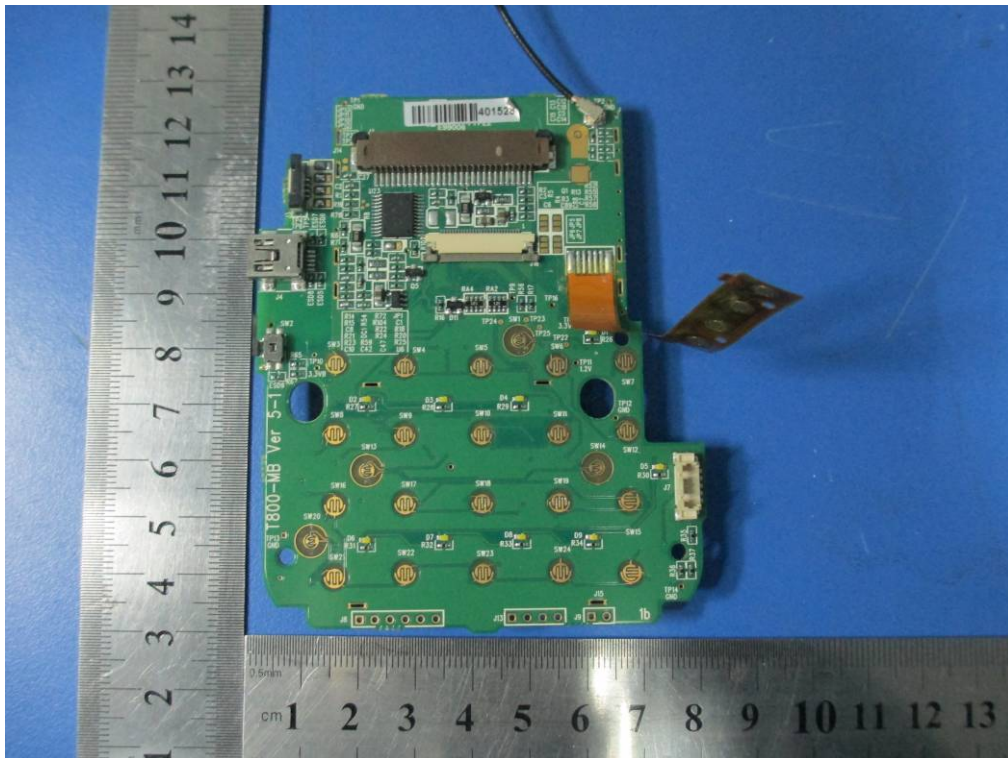
EUT PCB Board 2 - Top View



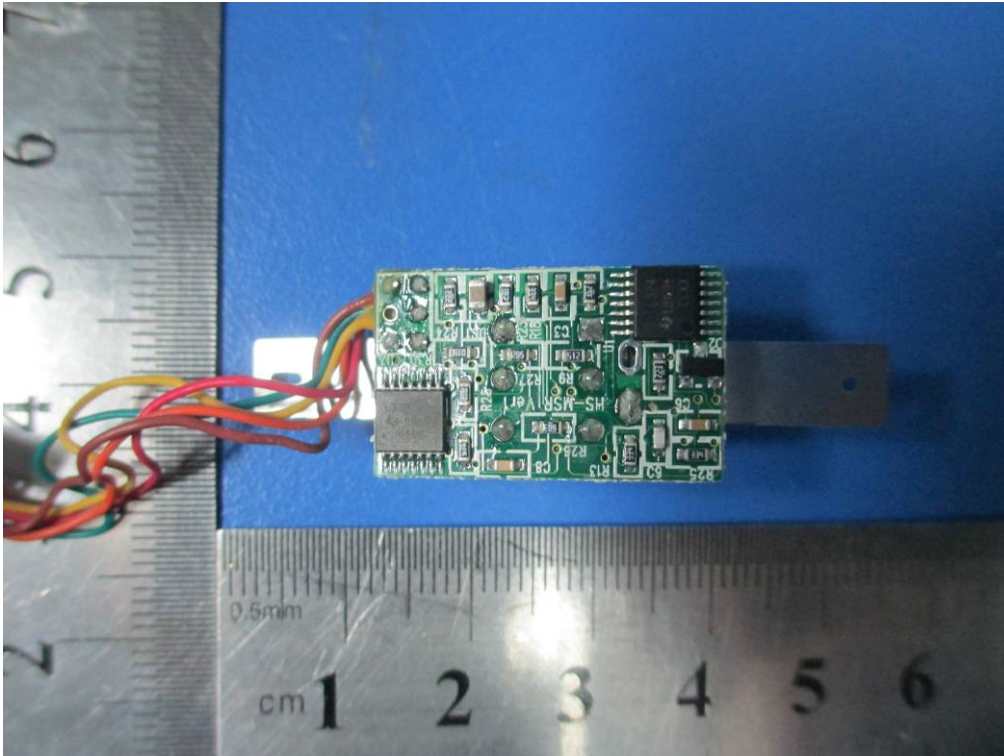
EUT PCB Board 2 - Bottom View



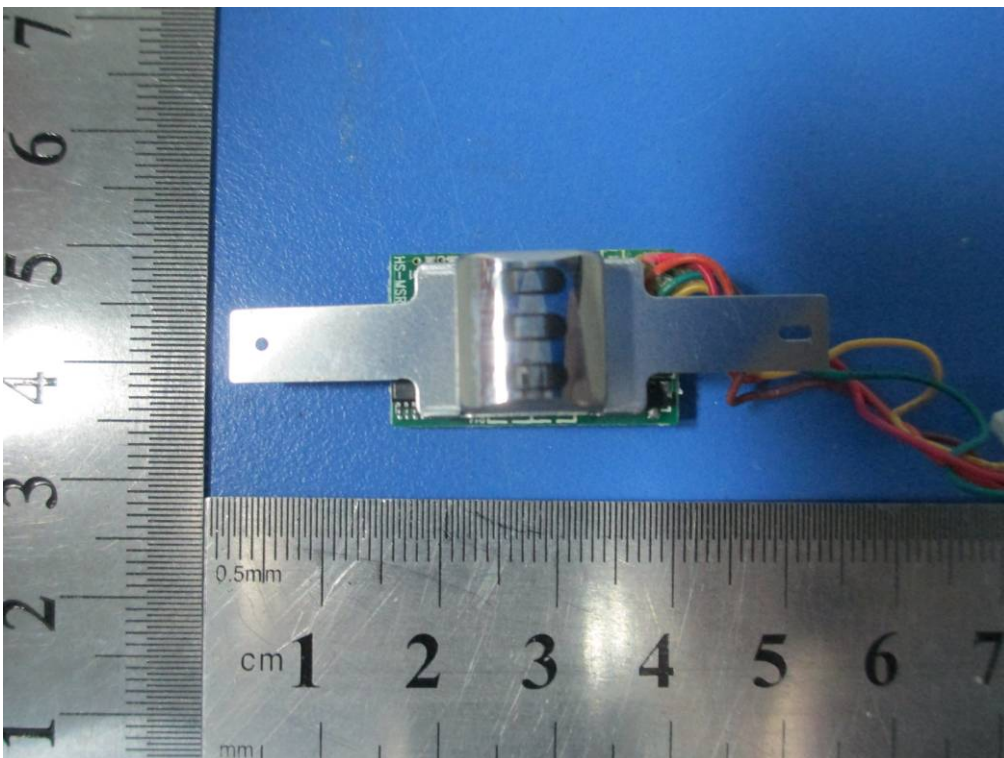
EUT PCB Board 3 - Top View



EUT PCB Board 3 - Bottom View



EUT PCB Board 4 - Top View



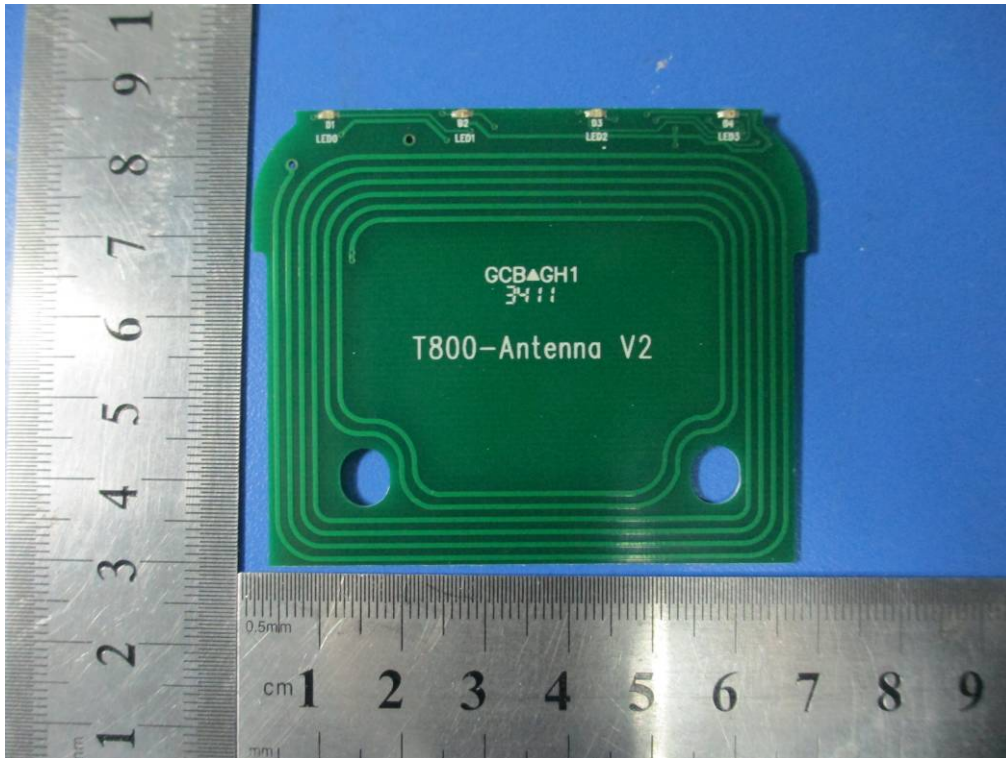
EUT PCB Board 4 - Bottom View



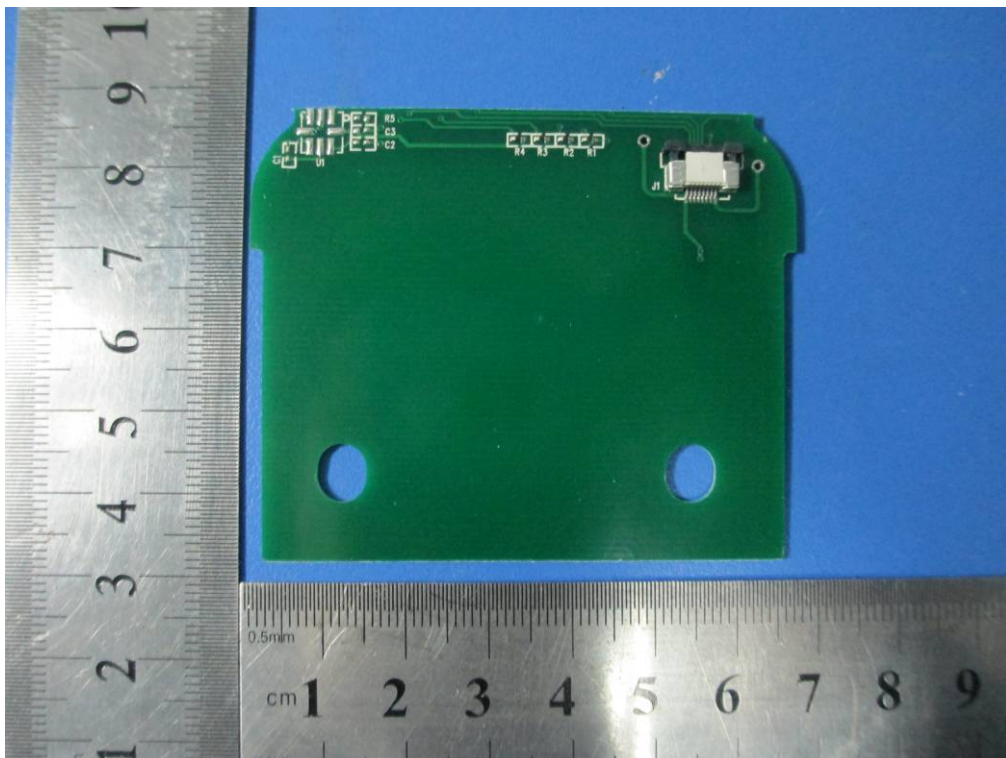
SIEMIC, INC.

Title: EMC Test Report for Wireless POS Terminal
Main Model: T800
Serial Model: N/A
To: FCC Part 15 Subpart B Class A: 2012, ANSI C 63.4: 2009

Report No: 12070018-FCC-E
Issue Date: February 27, 2013
Page: 29 of 38
www.siemec.com.cn



EUT PCB Antenna - Top View



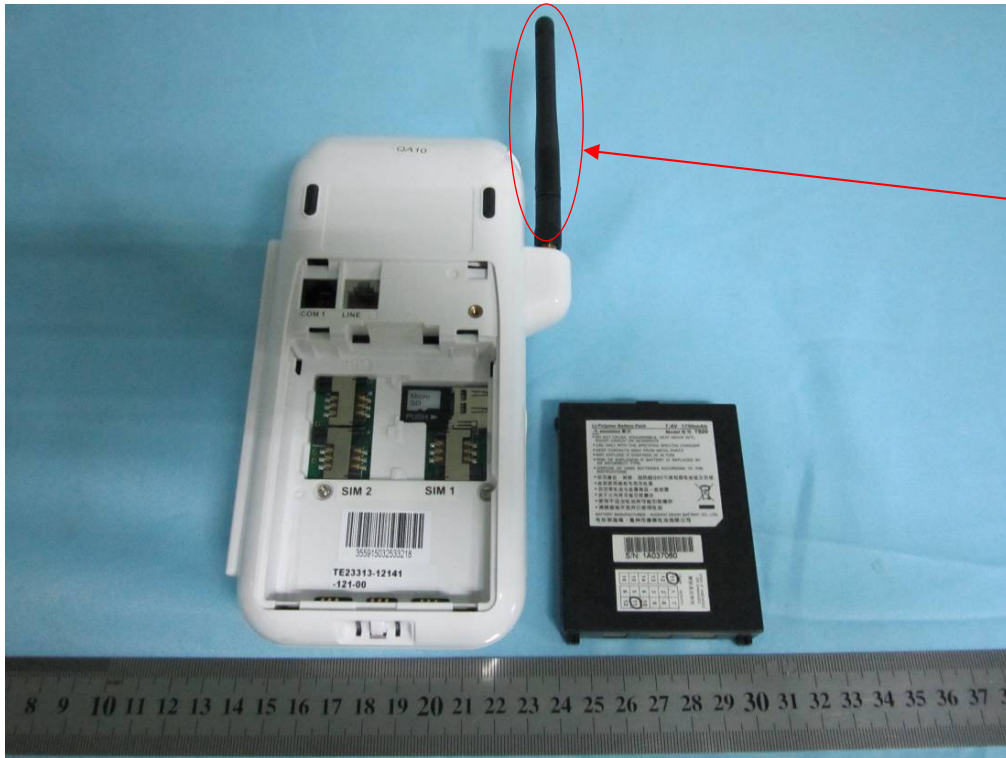
EUT PCB Antenna - Bottom View



SIEMIC, Inc.

Title: EMC Test Report for Wireless POS Terminal
Main Model: T800
Serial Model: N/A
To: FCC Part 15 Subpart B Class A: 2012, ANSI C 63.4: 2009

Report No: 12070018-FCC-E
Issue Date: February 27, 2013
Page: 30 of 38
www.siemec.com.cn



GSM Antenna

GSM Antenna – Top View