

1

2

3

4

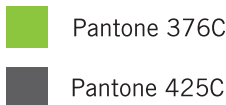
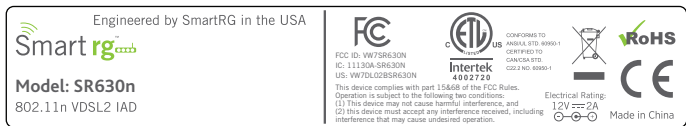
5

6

Remark	Description	Editor	Date

1. 以下由供应商印刷

2. 以下在1基础上由工厂打印



FONT: Trade Gothic LT Std

All colors shall be Pantone 425C, except for portions of SmartRG & RoHS logos, which shall be Pantone 376C

所有数字及字母必须按客户要求字体: Trade Gothic LT Std

编号规则:

1. MAC:XXXXXXXXXX (由客户提供)

2. S/N:SR630NXXYY-nnnnnnn

SR630 :固定

XX: 硬件版本-16进制 (硬件版本由产品经理提供)

(Hex number indicating HW Ver. e.g. A0, A1, ~ A9, B0, B1, etc)

YY: 出厂时间 月年_16进制

Hex number indicating ex-factory date (Month and Year)

e.g. August 2013 (08/13) = 83 December 2015 (11/15) = C5

nnnnnn:0000001- 9999999(按生产流水号)

(serial number e.g. 0000001, 0000002, etc)

BARCODE: CODE 128

NOTES(技术要求):

- 彩色印刷, 无边框, R1.0 (Color printing, no frame, R1.0)
- 材料: 50# 亮白PET, 不上光膜, 过UV油墨, 背胶 (Material: 50# Bright white PET, no film, UV coated, adhesive)
- 原材料及后处理工艺均能满足我司《环保技术标准》要求。 (Raw materials and the corresponding post processing should meet requirements defined in the T&W Environmental Protection Technical Standards)

来料方式: 卷装

DIM TOL±		▲				CUSTOMER: SmartRG					
RANGE	C1	C2	C3	C4	TITLE:		MODEL:		PART NO:		
0~6	0.1	0.1	0.15	0.2	PRINTING BOTTOM LABEL		SR630n				
6~30	0.2	0.3	0.4	0.5	UNIT'S	mm	VER	A0	DRAW	徐志娟	DATE: 20140425
30~80	0.25	0.5	0.9	1.2	MAT'L	XXXX	SCALE	1:1	CHECK		
80~180	0.3	0.8	1.2	1.5	FINISH	N/A	SHEET	1 / 1	PDE	N/A	
180~315	0.5	1.3	1.8	3	ANG.TOL±						
315~500	0.7	1.5	2.5	4	0°~30°/0.1°	30°~60°/0.3°	60°~90°/0.5°				
500~800	0.9	1.8	3	5							

1

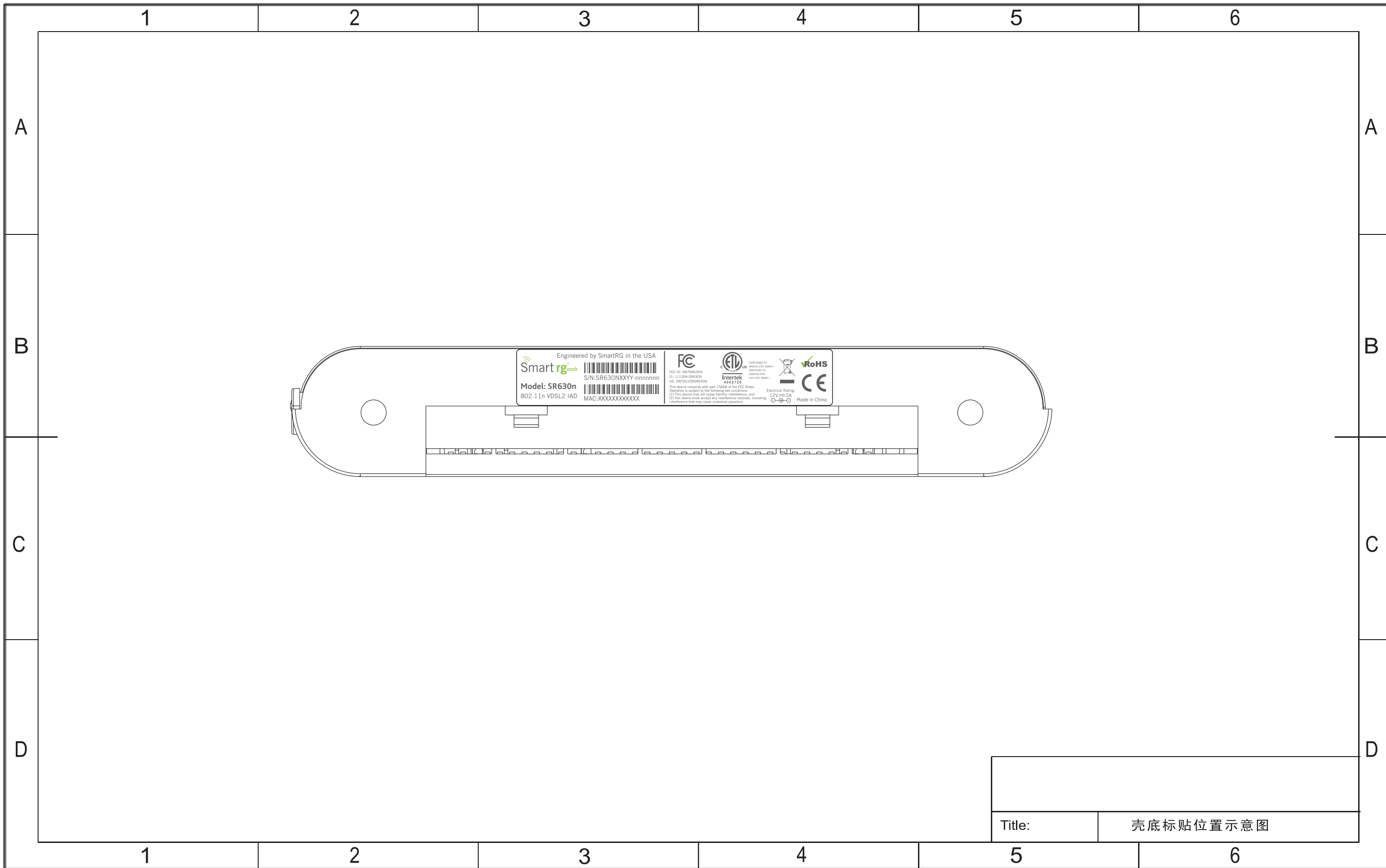
2

3

4

5

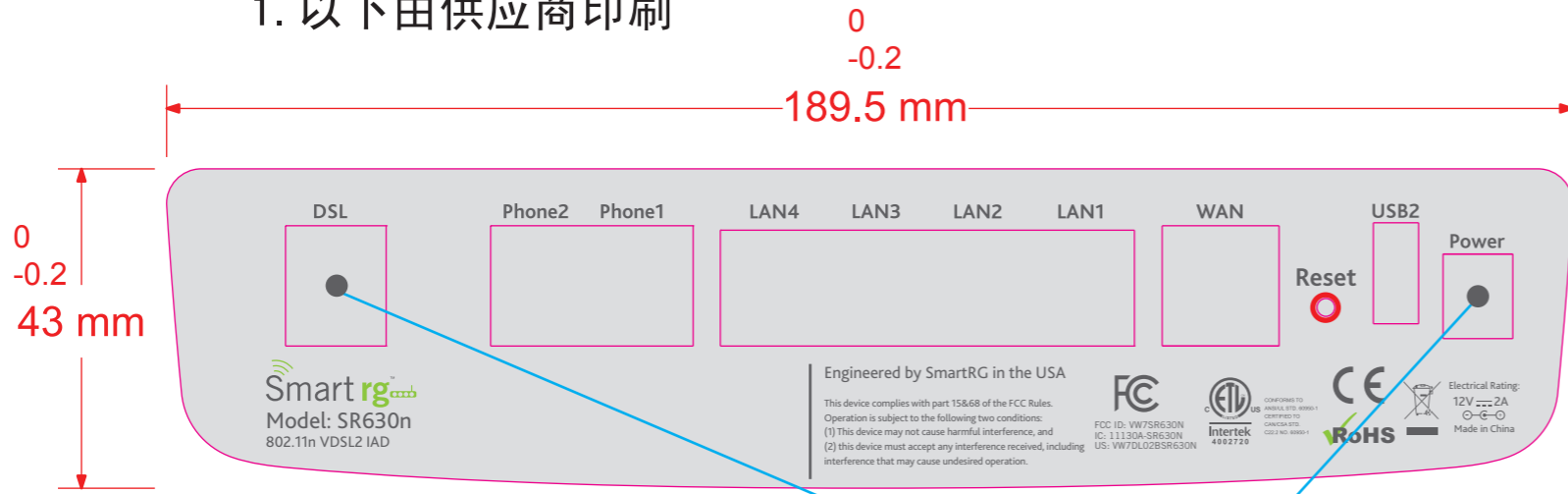
6



Title:

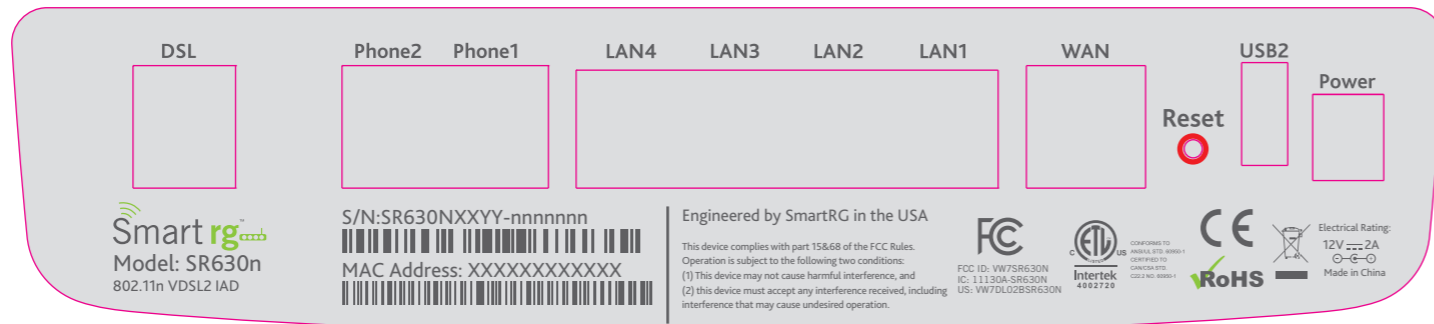
壳底标贴位置示意图

1. 以下由供应商印刷



2. 以下在1基础上由工厂打印

底纸上需在如示位置切直径3mm圆孔，



注: 红色为刀模切线, 需要切断

打印字体为: Bliss 2

Remark	Description	Editor	Date

- Pantone 376C
- Pantone 425C
- Pantone 420C

编号规则:

1. MAC:XXXXXXXXXXXX (由客户提供)

2. S/N:SR630NXXYY-nnnnnnn

SR630 :固定

XX: 硬件版本-16进制 (硬件版本由产品经理提供)

(Hex number indicating HW Ver. e.g. A0, A1, ~ A9, B0, B1, etc)

YY: 出厂时间 月年_16进制

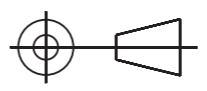
Hex number indicating ex-factory date (Month and Year)

e.g. August 2013 (08/13) = 83 December 2015 (12/15) = C5

nnnnnnn:0000001- 9999999(按生产流水号)

(serial number e.g. 0000001, 0000002, etc)

BARCODE: CODE 128

DIM	TOL±	▲					CUSTOMER:	
RANGE		C1	C2	C3	C4		SmartRG	
0~6	0.1	0.1	0.15	0.2		TITLE:		
6~30	0.2	0.3	0.4	0.5		MODEL:		
30~80	0.25	0.5	0.9	1.2		PART NO:		
80~180	0.3	0.8	1.2	1.5		SR630n		
180~315	0.5	1.3	1.8	3		61100000xxxx		
315~500	0.7	1.5	2.5	4		UNIT'S	mm	
500~800	0.9	1.8	3	5		VER	A0	
						DRAW	徐志娟	
						MAT'L	刘静倩	
						FINISH	N/A	
						SHEET	1 / 1	
						PDE	N/A	
						DATE:	20140917	