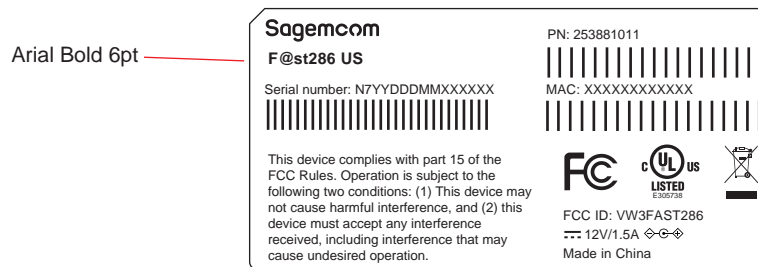
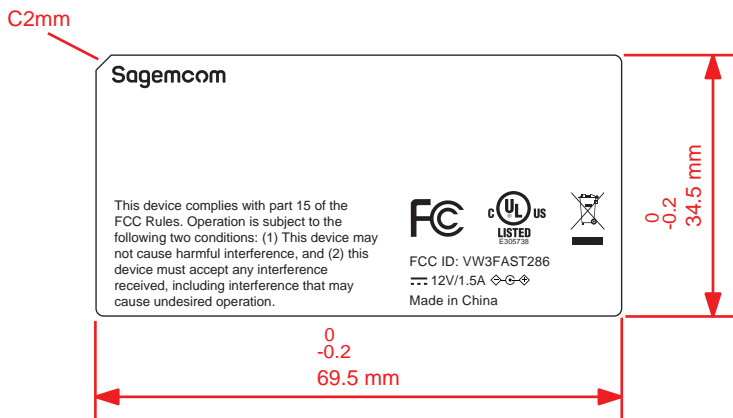


1. 以下内容作为标识标贴由供应商印刷

2. 以下内容由工厂在供应商印刷的基础上打印



S/N: N7YYDDMMXXXXXX
 N7:固定(code attributed to T&W)
 YY:YEAR, eg:13-2013
 DDD:DATE,指一年中的某天, eg:001、002、360、365
 MM:5W(Model code, different model use different code, distribute by TW)
 XXXXXX:000001-999999 流水号 (Product Serial No.)
 MAC:XXXXXXXXXXXX 见生产信息发布流程

Wi-Fi Name: MESH-XXXXXX 位数及内容由产测软件生成(=WIFI_SSID1)
 Wi-Fi Password: XXXXXXXXXXXX 位数及内容由产测软件生成(=Wifi_Key1)
 Web Access Key: YYYYYYYYYYYY 内容由产测软件生成(=INFO4)

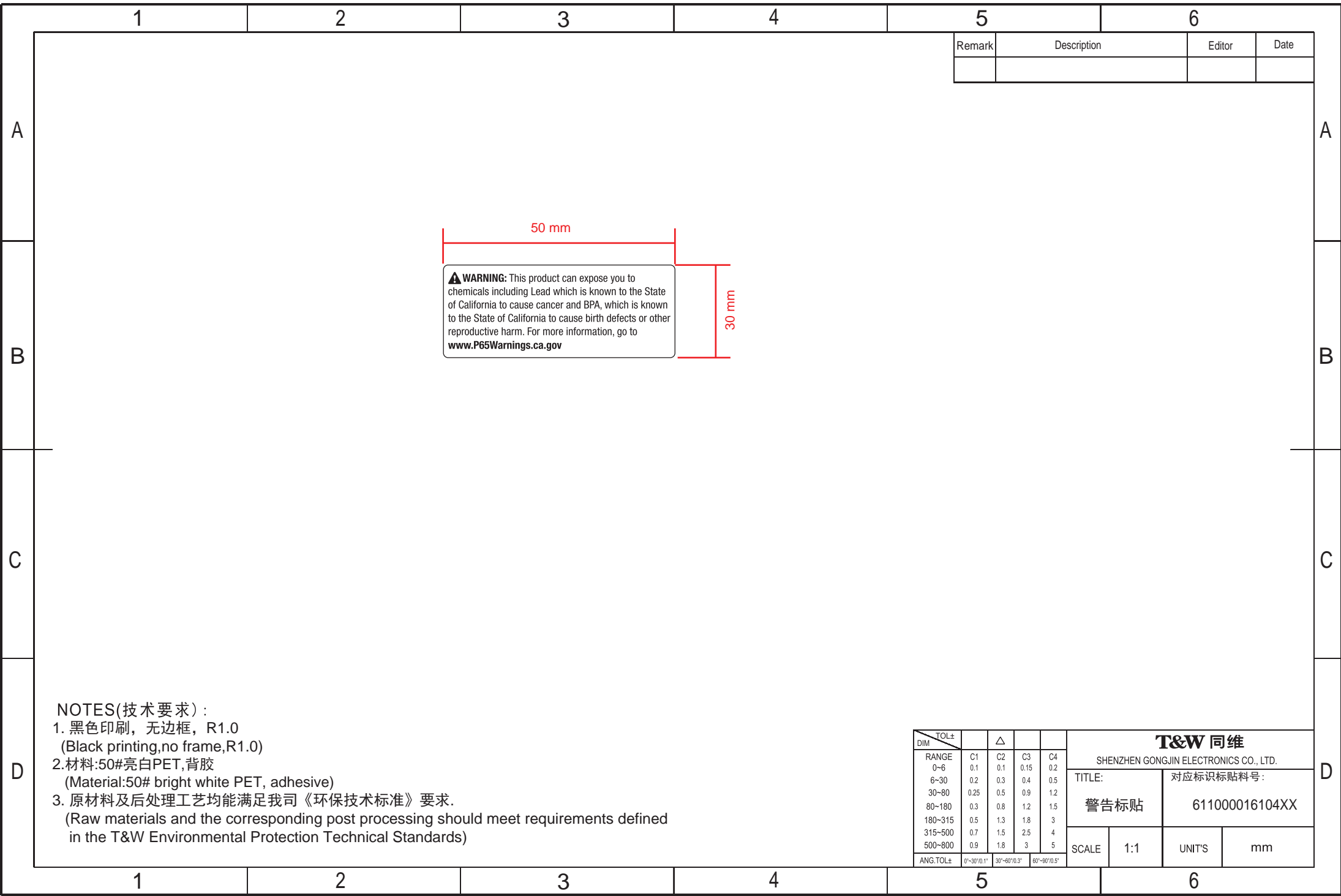
条码高度5mm
 BARCODE: CODE 39
 600点5.0mil

NOTES(技术要求):

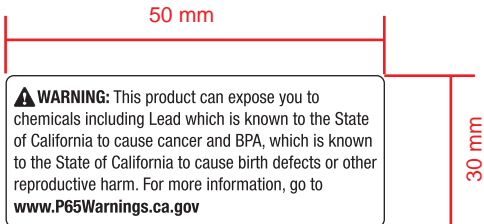
1. 黑色印刷, 无边框, R1.0 (Black printing, no frame, R1.0)
2. 材料:50#亮白PET,背胶 (Material:50# bright white PET, adhesive)
3. 原材料及后处理工艺均能满足我司《环保技术标准》要求. (Raw materials and the corresponding post processing should meet requirements defined in the T&W Environmental Protection Technical Standards)

DIM		TOL±				T&W 同维			
RANGE		C1	C2	C3	C4	SHENZHEN GONGJIN ELECTRONICS CO., LTD.			
0-6		0.1	0.1	0.15	0.2	TITLE:		对应标识标贴料号:	
6-30		0.2	0.3	0.4	0.5	盒底标贴		611000016104	
30-80		0.25	0.5	0.9	1.2	SCALE		1:1	
80-180		0.3	0.8	1.2	1.5	UNIT'S		mm	
180-315		0.5	1.3	1.8	3				
315-500		0.7	1.5	2.5	4				
500-800		0.9	1.8	3	5				
ANG.TOL±		0°-30°/0.1°	30°-60°/0.3°	60°-90°/0.5°					

Remark	Description	Editor	Date



Remark	Description	Editor	Date



NOTES(技术要求):

1. 黑色印刷, 无边框, R1.0
(Black printing,no frame,R1.0)
2. 材料:50#亮白PET,背胶
(Material:50# bright white PET, adhesive)
3. 原材料及后处理工艺均能满足我司《环保技术标准》要求.
(Raw materials and the corresponding post processing should meet requirements defined in the T&W Environmental Protection Technical Standards)

DIM	TOL±				T&W 同维			
	C1	C2	C3	C4	SHENZHEN GONGJIN ELECTRONICS CO., LTD.		TITLE: 警告标贴	
RANGE					对应标识标贴料号:		611000016104XX	
0-6	0.1	0.1	0.15	0.2	SCALE		1:1	UNIT'S
6-30	0.2	0.3	0.4	0.5	mm			
30-80	0.25	0.5	0.9	1.2				
80-180	0.3	0.8	1.2	1.5				
180-315	0.5	1.3	1.8	3				
315-500	0.7	1.5	2.5	4				
500-800	0.9	1.8	3	5				
ANG.TOL±	0°-30°/0.1°	30°-60°/0.3°	60°-90°/0.5°					



Label location