

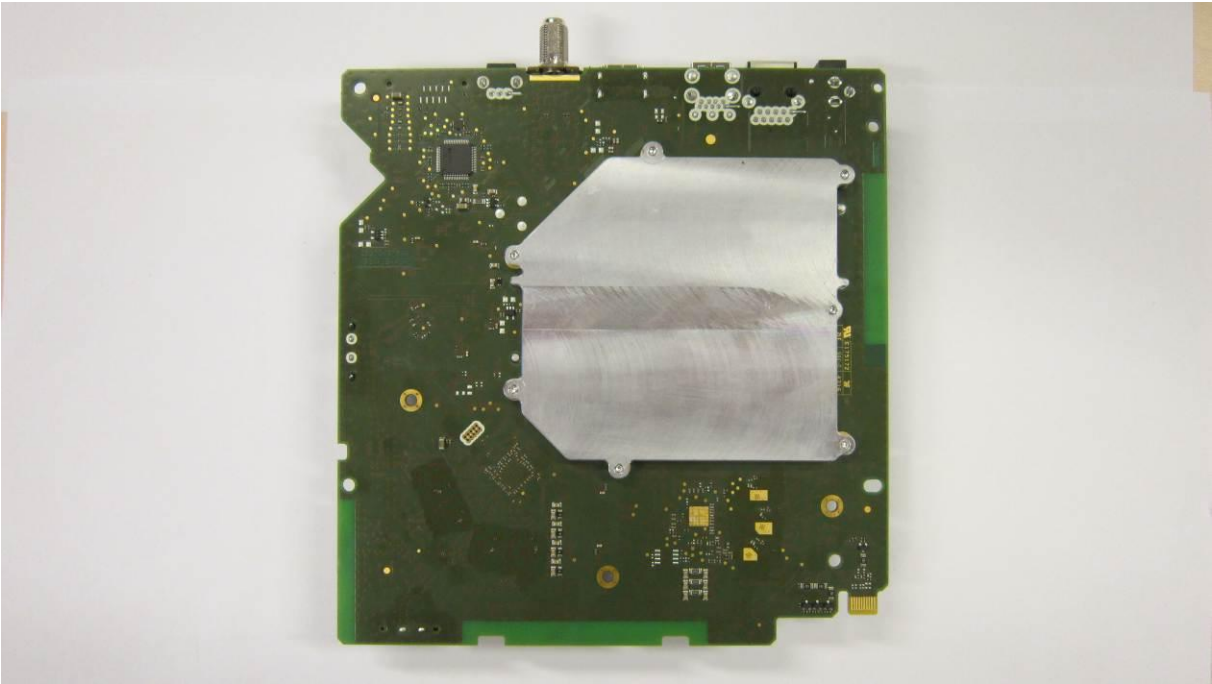
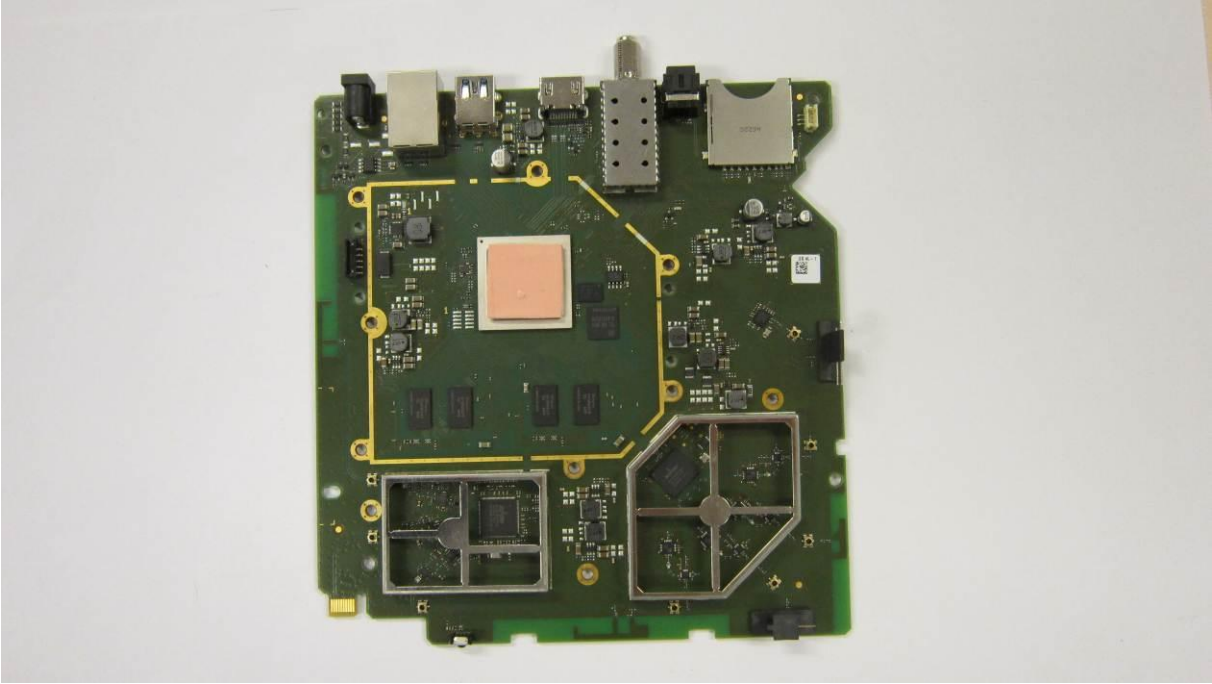
Internal Photos

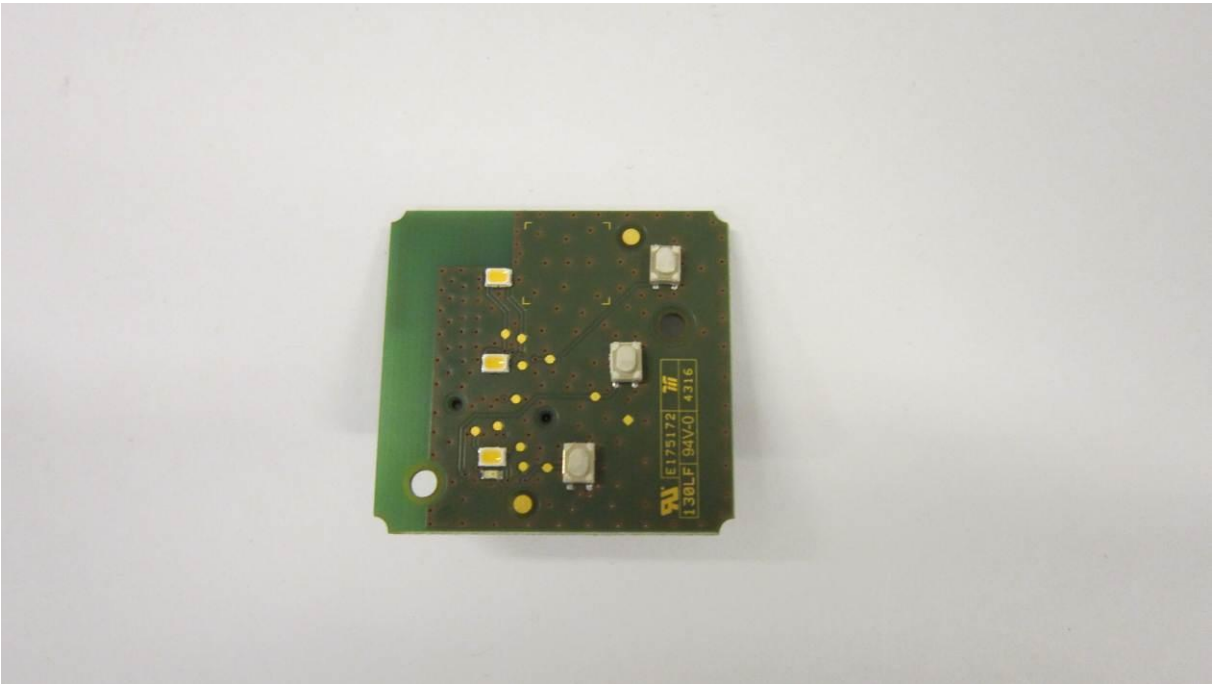
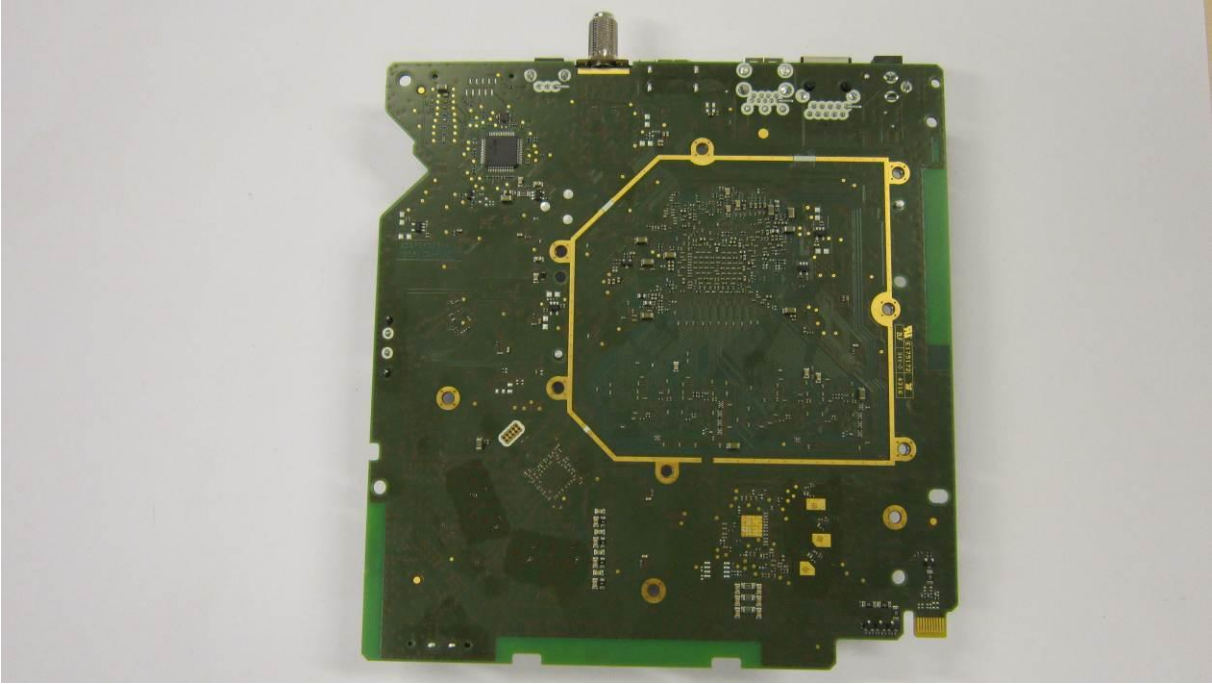
Main board



Keyboard

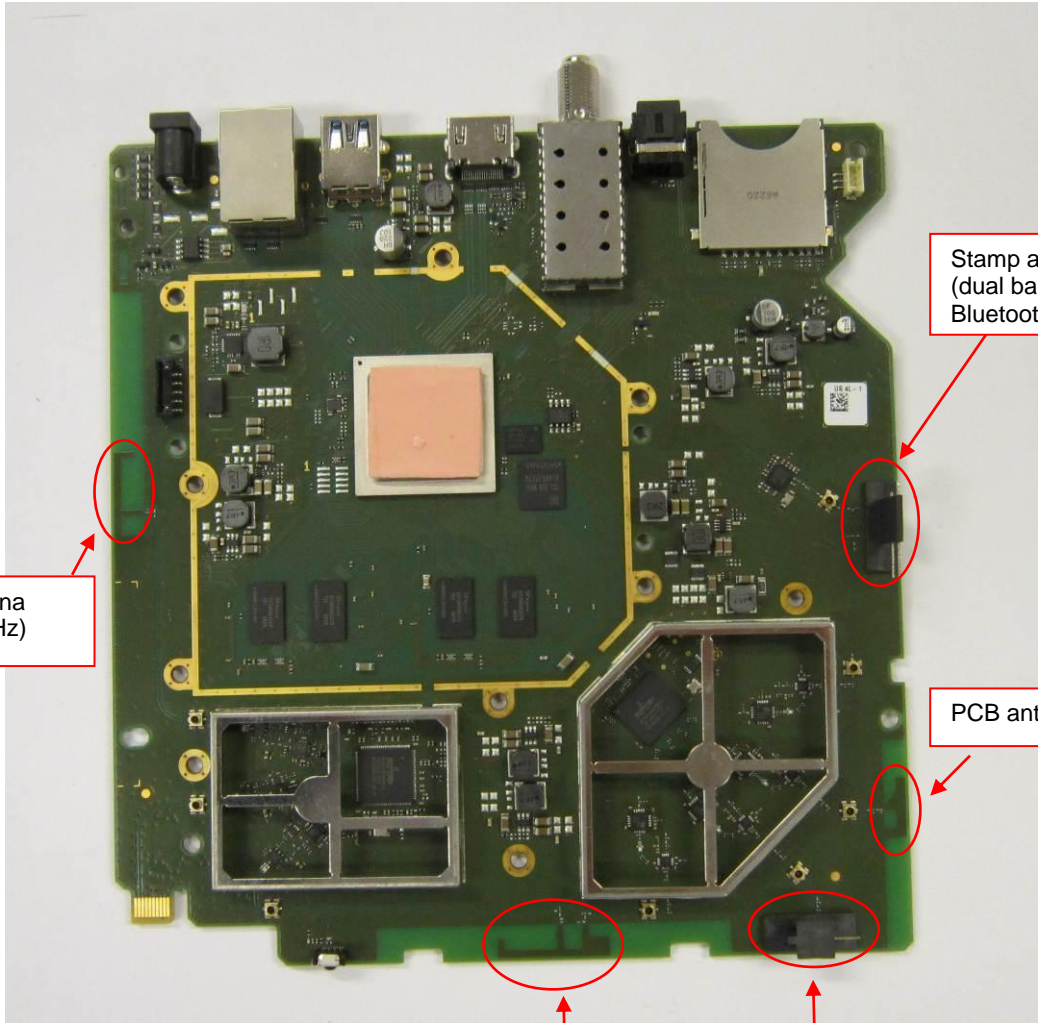








Antenna description:



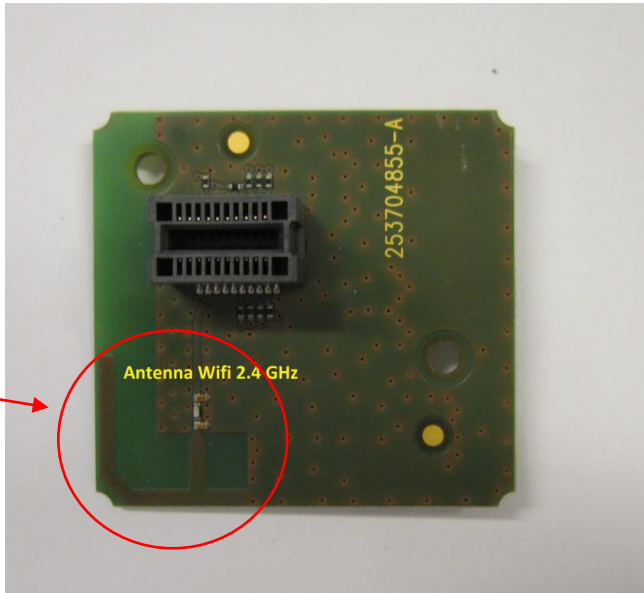
PCB antenna
(Wifi 2.4GHz)

Stamp antenna
(dual band Wifi 5GHz +
Bluetooth 2.4GHz)

PCB antenna (Wifi 5GHz)

PCB antenna (dual band
Wifi 2.4 & 5GHz)

Stamp antenna (Wifi 5GHz)



PCB antenna
(Wifi 2.4 GHz)

Antenna Wifi 2.4 GHz