

Quick Guide

1. System Requirements

At least 50MB of free disk space is required; Windows 7, Windows Vista or Windows XP operating systems are supported.

2. BlueSoleil Installation

2.1 Before installing

Uninstall any previous versions of BlueSoleil installed on your computer before installing this version.

- Click **Start -> Control Panel** to open Control Panel
- Choose **Add or Remove Programs**.
- Select **BlueSoleil** from the program list and uninstall it.

Please note it does not matter whether the bluetooth adapter is plugged in or not into the USB port of your PC during installation.

2.2 Installing BlueSoleil

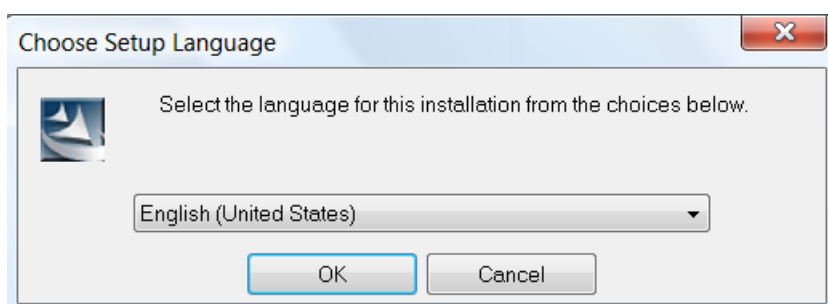
- Insert the LM541 installation CD into your CD-ROM or DVD-ROM drive.

If you did not receive a CD with your product, you can still download the latest version from LM Technologies website ([LM540 Driver](#)) and install it directly.

- Double click **setup.exe** to start installation



- Choose the setup language to use from the drop down box

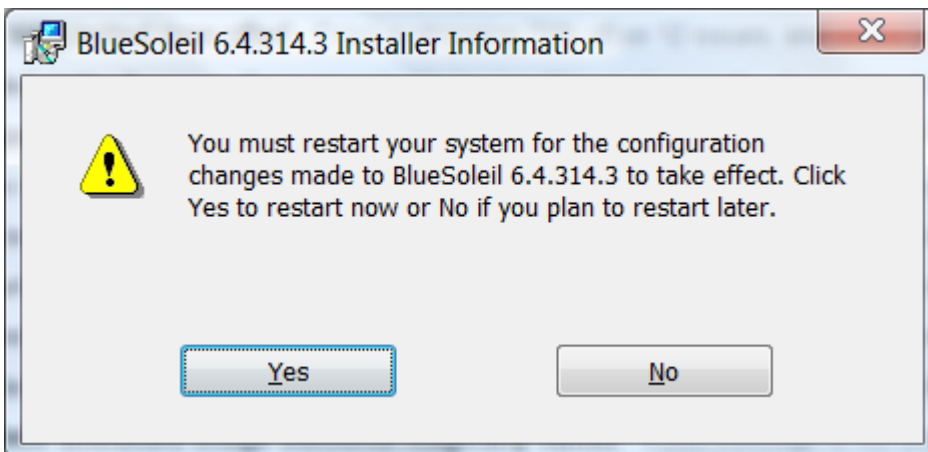


- Follow the instructions on the screen



- Restart your computer

Note: If you do not restart your computer after the installation is complete, some functions of the software may not be available or may work abnormally.



3. Getting Started

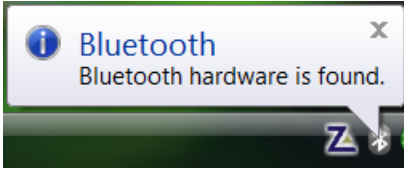
3.1 Plug in LM540


Plug in LM540 to the USB port of the PC. The license key for BlueSoleil is programmed in the LM540 hardware. So when you start the Bluesoleil software, the license key will be automatically detected.

There is one license key corresponding to each Bluetooth Device Address.

3.2 Starting BlueSoleil

When BlueSoleil starts and the LM540 is plugged in the PC, a notification message will appear in the system tray as shown below and the system tray Bluetooth icon will turn to BLUE



Double click "Bluetooth Places" icon on the desktop  or right-click the Bluetooth icon in the system tray and select "Explore Bluetooth Places".

3.3 Search remote Bluetooth Devices

- Make sure the device(s) are set discoverable.
- Double-click Search Devices icon. This will initiate Bluetooth Device Search and then Bluetooth devices will appear in the window.

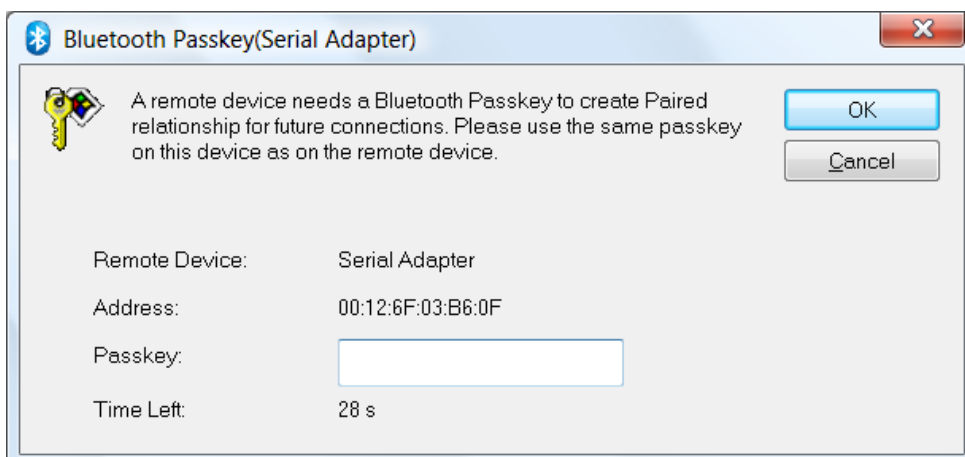
3.4 Search Services

- Double-click the device icon to enter the device's subfolder.
- Services supported by the device will appear in the window automatically. If not, double-click **Search Services** icon to refresh.

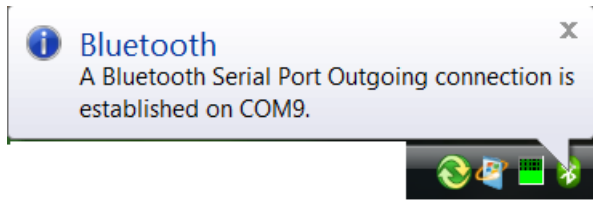
3.5 Establish a connection


- Double click a service icon to initiate a connection.

You might be prompted to enter a passkey for authenticate the remote device. Enter the same passkey on both sides, or enter the specific one provided by the remote device manufacturer on your computer side only. On BlueSoleil side, the dialog box as shown in the following picture will pop up to enter a passkey.



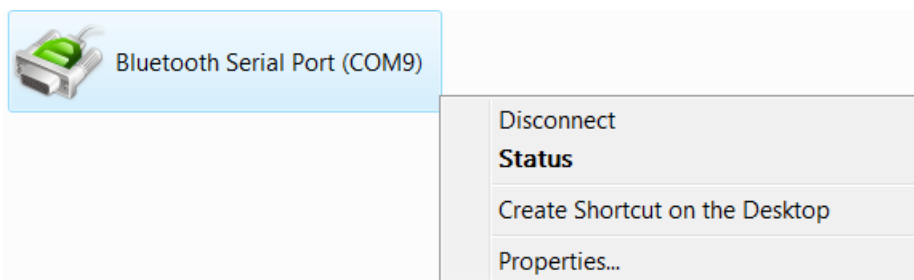
In this case, a connection to a Serial Device is initiated. Once the pairing and connection is successful, the following message will appear in the system tray.



The Bluetooth Icon in the system tray will also turn GREEN 

3.6 Terminate a connection

- Right-click the connected remote service icon and select **Disconnect**.



On disconnection, the bluetooth icon in system tray will again turn BLUE.

4. Uninstalling BlueSoleil

BlueSoleil can only be removed by using the Control Panel. For detailed instructions, please refer to **Step 2.1 Before installing** in this guide.

NOTE:

BlueSoleil 6 is licensed under LM Technologies for the sole purpose of adding functionality of the LM540 Class 1 Bluetooth USB Adapter. It may not be used for any other purpose. If you have any issues with this software, please check the FAQ section of the BlueSoleil website, www.BlueSoleil.com. If you have any issues with LM540 operation, please check the troubleshooting section of the LM Technologies support page,

<http://www.lm-technologies.com/business/troubleshooting.php>

Statement from IVT Corporation, owners of BlueSoleil

Users within MAC ID range from 00:15:83:45:B2:C2 to 00:15:83:45:BC:85 can upgrade to BlueSoleil 8 from BlueSoleil 6, please download the version package from <http://www.bluesoleil.com/products/SoftwareDetail.aspx?ProductID=S0001201005190001>

2010-9-8

IVT Corporation

All rights reserved LM Technologies Ltd 2010



6 FCC Warning Statement

This device complies with Part 15 and 15C of the FCC Rules. Operation is subject to the following two conditions:

- 1) This device may not cause harmful interference, and
- 2) This device must accept any interference received, including interference that may cause undesired operation

This equipment has been tested and found to comply with the limits for a class B digital device, pursuant to part 15 and 15C of the FCC Rules. These limits are designed to provide reasonable protection against harmful interference in a residential installation. This equipment generates, uses and can radiate radio frequency energy and, if not installed and used in accordance with the instructions, may cause harmful interference to radio communications. However, there is no guarantee that interference will not occur in a particular installation. If this equipment does cause harmful interference to radio or television reception, which can be determined by turning the equipment off and on, the user is encouraged to try to correct the interference by one or more of the following measures:

- Reorient or relocate the receiving antenna.
- Increase the separation between the equipment and receiver.
- Connect the equipment into an outlet on a circuit different from that to which the receiver is connected.
- Consult the dealer or an experienced radio/TV technician for help.

Installation and use of this device must be in strict accordance with the instructions included in the user documentation provided with the product. Any changes or modifications (including the antennas) made to this device that are not expressly approved by the manufacturer may void the user's authority to operate the equipment. The manufacturer is not responsible for any radio or television interference caused by unauthorized modification of this device, or the substitution of the connecting cables and equipment other than manufacturer specified. It is the responsibility of the user to correct any interference caused by such unauthorized modification, substitution or attachment. Manufacturer and its authorized resellers or distributors will assume no liability for any damage or violation of government regulations arising from failing to comply with these guidelines.

This equipment complies with FCC radiation exposure limits set forth for an uncontrolled environment. This transmitter must not be co-located or operating in conjunction with any other antenna or transmitter.

7 Environment Conditions

Operating Temperature -20° C ~ +75° C
Working Humidity 65+/-20%RH



Environmentally Friendly Disposal

You can help protect the environment!

Please remember to respect the local regulations: hand in the non-working electrical equipments to an appropriate waste disposal centre.



8 Revision History

Revision	Date	Comments
Rev1.0	15/11/2011	First Version
Rev1.1	15/10/2013	<ol style="list-style-type: none"> 1. Updated product pictures 2. Added certification information to specification 3. Added FCC Warning Statement
Rev1.2	07/11/2013	<ol style="list-style-type: none"> 1. Add environment conditions section