



## Quick Start Guide

### REDFLY SPECIFICATIONS

Display	800x480
VGA Port	800x460 maximum resolution
USB Ports	2x2.0 powered (500mA maximum)
Bluetooth	Compatible with Bluetooth 1.0 and 2.0. 30 feet (10 meters) maximum range, 1Mbps maximum throughput
Weight	1 lb. 14oz. (856 grams)
Battery	9VDC 2.5A LiPo Avg. 3 hours to fully charge the internal battery
OS Support	Windows Mobile 5 (Pocket PC and Smartphone editions) Windows Mobile 6 (Professional and Standard editions)
Operating Temperature	32-130 degrees F (0 to 55 degrees C)
Charger	9VDC 2.5A LiPo-compatible

### CUSTOMER SUPPORT

Please check out our support page at [www.celiocorp.com/support](http://www.celiocorp.com/support) for answers to your REDFLY questions and help options.



© Copyright 2007 Celio Corp. Celio, REDFLY, the REDFLY logo, and other indicia are all trademarks or registered trademarks of Celio Corp. All rights reserved. Patent Pending. [www.celiocorp.com](http://www.celiocorp.com)

The Bluetooth® word mark and logo are registered trademarks owned by the Bluetooth SIG, Inc.

## Welcome

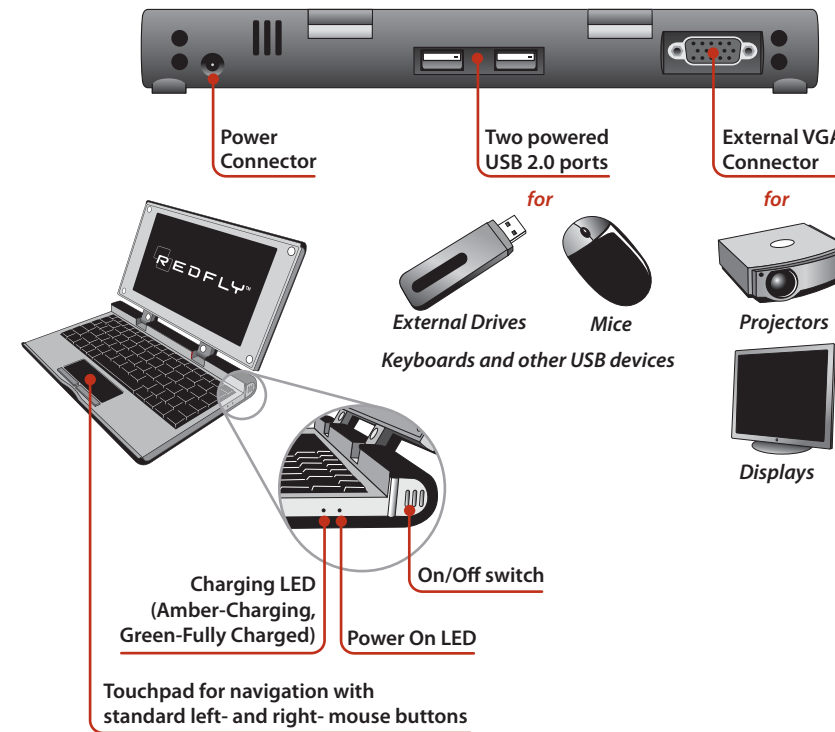
### Welcome to REDFLY—the Essential Windows Mobile Smartphone Companion

You are minutes away from enjoying the liberating power of the REDFLY's larger keyboard, wide screen, and enhanced environment for your Windows Mobile smartphone!



Your REDFLY is an external display with touchpad and keyboard that easily connects to your Windows Mobile phone. The REDFLY uses the phone's operating system, so there's no need to learn a new one, install or maintain new applications, or synchronize data. Everything works just like it does on your phone, only easier.

## Meet Your REDFLY Mobile Companion



## STEP 1: Install the REDFLY Software

To setup your REDFLY for the first time, you will need:

- Your Windows Mobile smartphone with an active Internet connection
- OR, as an alternative: a PC and the included REDFLY Installation CD, or an active Internet connection and Microsoft ActiveSync (or "Windows Mobile Device Center for Microsoft Vista" on Vista systems) installed.
- Your phone's USB connecting cable (Contact your local retailer for a replacement if you do not have this cable.)
- Your REDFLY.

Remove the protective plastic film from your REDFLY display. Plug in the included AC charging adapter into the REDFLY and then into an available outlet. (For best performance, allow the REDFLY to charge for at least 3 hours before using.)

### SMARTPHONE SETUP

Use your smartphone browser to go to:  
[www.redfly.com/install](http://www.redfly.com/install)

Click on the appropriate button:

[Windows Mobile 5 Pocket PC](#)  
[Windows Mobile 6 Pocket PC](#)  
[Windows Mobile 5 Smartphone](#)  
[Windows Mobile 6 Smartphone](#)

to run or download the setup software for your particular phone. Follow the on-screen directions to complete the installation.

**Note:** If you do not know which version of Windows Mobile you have, choose *Start/Settings/System/About* and your phone will display this information.

After installing the REDFLY Software, the setup program will automatically reset your phone.

## STEP 1: Install the REDFLY Software (continued)

### PC SETUP

If you do not have a web connection on your phone, you can also set up the REDFLY using your PC, the enclosed Install CD, or an internet connection, and Microsoft ActiveSync (on Vista this is called the "Windows Mobile Device Center for Microsoft Vista").

- Go to [www.redfly.com/install](http://www.redfly.com/install) and select the appropriate setup program for your particular phone and download it to your PC.
- Alternately, insert the REDFLY Installation CD into your PC drive and select the appropriate version of the REDFLY setup software from the menu. This will copy the setup program to your desktop.
- Launch Microsoft ActiveSync (or Device Center) on your PC.
- Plug your smartphone USB cable into your phone and into your PC. ActiveSync will automatically find your phone and say "Connected".
- Choose ActiveSync's Explore to open your smartphone's File Explorer.
- Drag and drop the REDFLY setup program onto your smartphone.
- Use your phone's File Explorer to go to the folder where you placed the setup program then click on it.
- Follow the onscreen instructions to complete the install.

**Note:** On some phones, Windows Mobile will ask you for permission to run the REDFLY setup program. If so, click OK to continue.

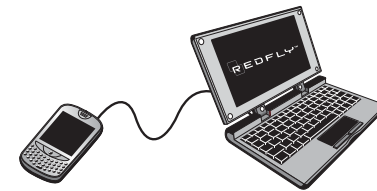
After installing the REDFLY Software, the setup program will automatically reset your phone.

## STEP 2: Connecting the REDFLY

- Power on your phone.
- Press and hold the REDFLY's On/Off switch for one or two seconds to power on the REDFLY.



- Attach your USB connecting cable to your phone and the REDFLY.



Your phone will automatically detect the connection to the REDFLY and switch your phone display and keyboard functions to the REDFLY.

## Top Ten REDFLY Benefits

- Easily move between multiple active applications using the Alt-Tab keys
- Browse the web using multiple tabbed pages
- Quickly enter numeric data using the embedded keypad.
- Really see the web on your browser with the larger screen
- Rapidly touch type answers to e-mails.
- Instantly add an external keyboard or mouse to your phone.
- Quickly share presentations with the built-in VGA port.
- Expand your memory options using standard external flash drives.
- Stay productive with Mobile Office apps on the larger screen and keyboard.
- Enjoy the lightweight companion with desktop features and phone portability.

STEP 3: Setting up Bluetooth

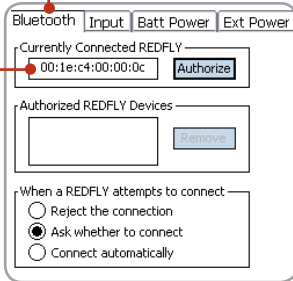
Now that you’ve setup your phone to work with the REDFLY over USB, you now have the option of activating the REDFLY’s Bluetooth feature.

SETTING UP BLUETOOTH FOR THE FIRST TIME (“PAIRING”)

- 1. Have your REDFLY connected to your smartphone using the USB cable.
- 2. Turn on your phone’s Bluetooth connection (your phone’s manual will explain how.)
- 3. Select REDFLY Settings from your Start/Settings/System screen.

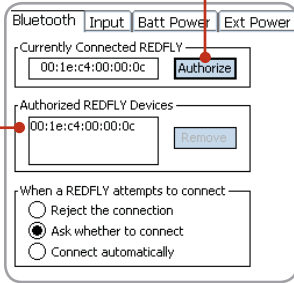


- 4. Select the Bluetooth tab at the top of the REDFLY Settings screen. The Bluetooth address of your REDFLY appears in the *Currently Connected REDFLY* address box.



STEP 3: Setting up Bluetooth (continued)

- 5. Click on the Authorize button.
- 6. Your REDFLY’s address now appears in the Authorized List.
- 7. Click on the Ok box in the upper right hand corner of the screen (or press the OK button on the keyboard) to close the REDFLY Settings window.



- 8. Press the BLUETOOTH button F12 on the REDFLY keyboard.



- 9. Your phone may ask you to allow the REDFLY to connect. Choose YES on your phone if this is the case.

The REDFLY will start the Bluetooth connection. You can now disconnect the USB cable and work using Bluetooth.

Using The REDFLY

Using the REDFLY is as simple as using your smartphone—because *it is your smartphone!* E-mail, voicemail, contact management, and all the other familiar Windows Mobile features act exactly the same, so there’s no learning curve.

USING ALT-TAB

You can use Alt-Tab to toggle between active programs on your phone. Press ALT-TAB on the keyboard to display a box showing the different active program icons. Hold the Alt key down, then press and release the Tab key move between the program icons to highlight the one you want.



USING BLUETOOTH

Once you have “paired” your smartphone with your REDFLY over Bluetooth, connecting wirelessly the next time is almost automatic.

- 1. Turn your smartphone on and activate Bluetooth.
- 2. Power on the REDFLY.
- 3. Press the BLUETOOTH F12 key.



The REDFLY will connect to your phone via Bluetooth. The REDFLY will then switch the active display from your phone to the REDFLY.

**Caution:** *Be careful when saving data to an external USB drive while on Bluetooth. If you move out of the range of Bluetooth with the REDFLY, you may lose your connection to your phone. If your phone were saving to the drive, this disconnect could cause the drive to become corrupted.*

Using The REDFLY (continued)

DISCONNECTING FROM THE REDFLY

When you are ready to end your session with your REDFLY, you can disconnect and reactivate your smartphone display in one of three ways:

- 1. Unplug the USB cable.
- 2. Power off the REDFLY by holding the On/Off switch for one or two seconds.
- 3. If you are on Bluetooth, press the BLUETOOTH (F12) key on the REDFLY.



DISPLAY ICONS

The REDFLY’s “System Tray” at the bottom right of the display features icons for battery status and Caps/Num Lock.



REDFLY Tray Icon	Symbol
Caps Lock	Red capital letter “A”
Num Lock	Red numeral “1”
Battery Charging	
Battery Fully Charged	
Battery 1/2 Charged	
Battery Needs Charging	

TAB AND HOLD

For Touch-screen phones, the REDFLY software replicates the “Tap and Hold” onscreen action with the Left-Mouse-Button-Hold” action.

SMARTPHONE CHARGING

Another benefit of using the REDFLY is the phone-charging feature. When you plug in your smartphone to the REDFLY using the USB cable, the REDFLY will recharge your phone battery (if your phone supports charging via USB). This protects your data if your phone battery were to run down while working on the REDFLY.

Keyboard Shortcuts

The REDFLY keyboard provides shortcuts to frequently used applications or preferences.

- 1. **Home:** This key takes you to your TODAY menu.
- 2. **Mail:** This launches Microsoft Outlook.
- 3. **Web:** This launches Internet Explorer.
- 4. **Send:** Acts like the Send key on your smartphone
- 5. **End:** Acts like the End key on your smartphone.
- 6. **L Menu:** Activates the current application’s left menu.
- 7. **R Menu:** Activates the current application’s right menu.
- 8. **OK:** Performs the same function to select an item or accept an onscreen change or preference as your phone.”
- 9. **Brightness Increase/Decrease:** The F9 and F10 keys brighten or dim your REDFLY display.
- 10. **External Monitor:** Activates the REDFLY’s VGA port so you can use a projector or external monitor with your REDFLY. Press once for External Monitor Only, twice for both the External Monitor and the REDFLY display, and three times to return to the REDFLY display only.
- 11. **Bluetooth:** This key activates or deactivates the REDFLY’s Bluetooth connection with your phone.
- 12. **REDFLY:** This key brings up the REDFLY Settings screen.

REDFLY Tabbed Browser



Another great productivity benefit of the REDFLY for touch-screen users is the REDFLY Tabbed Browser. This browser lets you open multiple webpages in different tabs. You can run the Tabbed browser on your REDFLY or your phone by clicking on Start/Programs/REDFLY Browser.

HOW TO OPEN A NEW TAB

Press the L Menu key to open another web page. You can open new tabs up to the limit of your phone’s available memory.



Troubleshooting

**Q:** *Why does my REDFLY screen go black?*

**A:** This is a power-saving measure that activates after five minutes of inactivity (user-settable).

**Q:** *When I connect to the REDFLY using USB, the REDFLY displays an error message*

**A:** Some phones don’t automatically set the appropriate type of connection for the REDFLY. To fix this:

- 1. Go to your smartphone’s Start/Settings screen (on some phones go to the Start/Programs screen).
- 2. Choose Connections (on some phones, choose Accessory).
- 3. Choose USB to PC (on some phones, choose USBSwitch).
- 4. Make sure that the box “Enable advanced network functionality” is checked. If not, mark the box and click Ok to accept the change. (Some phones may call this option “Enable RNDIS” instead.)

**Q:** *I have connected my REDFLY to my phone, but nothing happens when I press the buttons on the keyboard.*

**A:** Check to be sure your phone is not locked. If your phone is locked, the REDFLY will connect but it will not work the apps.

**Q:** *I tried running Bluetooth on the REDFLY but the message appears “Can’t Connect. Not paired with a phone”.*

**A:** You have not paired this particular phone to your REDFLY. You will need to follow the steps on *Setting Up Bluetooth* to complete the pairing and use Bluetooth.

Safety

Do not use the REDFLY if you are operating a motor vehicle. Turn off the REDFLY if you are using the Bluetooth connection in any location where posted notices require this—including such notices as “Turn off two-way radio”. The FAA may also require that the REDFLY Bluetooth connection not be used onboard commercial aircraft inflight.

Do not use the REDFLY Bluetooth connection with the REDFLY close to any medical device that may be sensitive to radio (RF) transmissions.

FCC, CE AND CSA COMPLIANCE STATEMENT

This device complies with appropriate government radio frequency rules and regulations. Please see the REDFLY User’s Guide or the Cello Corp. website for further information.

This product complies with Part 15 of the FCC rules. Operation is subject to the following conditions: (1) This device may not cause harmful interference, (2) This device must accept any interference received including interference that may cause undesired operation.

