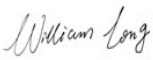




# RF EXPOSURE REPORT



Report No.: 15020390-FCC-H1

Supersede Report No.: N/A

Applicant	Beijing Jia An Electronic Technology Co., Ltd	
Product Name	Wifi Module	
Model No.	TA3200R1D-UFL	
Test Standard	FCC 2.1091	
Test Date	April 27 to April 29, 2015	
Issue Date	April 29, 2015	
Test Result	<input checked="" type="checkbox"/> Pass <input type="checkbox"/> Fail	
Equipment complied with the specification	<input checked="" type="checkbox"/>	
Equipment did not comply with the specification	<input type="checkbox"/>	
		
William Long Test Engineer	Herve Idoko Checked By	
This test report may be reproduced in full only Test result presented in this test report is applicable to the tested sample only		

Issued by:  
SIEMIC (Nanjing-China) Laboratories  
2-1 Longcang Avenue Yuhua Economic and  
Technology Development Park, Nanjing, China  
Tel:+86(25)86730128/86730129 Fax:+86(25)86730127 Email: China@siemic.com.cn

## Laboratories Introduction

SIEMIC, headquartered in the heart of Silicon Valley, with superior facilities in US and Asia, is one of the leading independent testing and certification facilities providing customers with one-stop shop services for Compliance Testing and Global Certifications.



In addition to testing and certification, SIEMIC provides initial design reviews and compliance management throughout a project. Our extensive experience with China, Asia Pacific, North America, European, and International compliance requirements, assures the fastest, most cost effective way to attain regulatory compliance for the global markets.

### Accreditations for Conformity Assessment

Country/Region	Scope
USA	EMC, RF/Wireless, SAR, Telecom
Canada	EMC, RF/Wireless, SAR, Telecom
Taiwan	EMC, RF, Telecom, SAR, Safety
Hong Kong	RF/Wireless, SAR, Telecom
Australia	EMC, RF, Telecom, SAR, Safety
Korea	EMI, EMS, RF, SAR, Telecom, Safety
Japan	EMI, RF/Wireless, SAR, Telecom
Singapore	EMC, RF, SAR, Telecom
Europe	EMC, RF, SAR, Telecom, Safety

Test Report No.	15020390-FCC-H1
Page	3 of 11

---

This page has been left blank intentionally.

---

# CONTENTS

1	REPORT REVISION HISTORY.....	5
2	CUSTOMER INFORMATION .....	5
3	TEST SITE INFORMATION.....	5
4	EQUIPMENT UNDER TEST (EUT) INFORMATION .....	6
5	FCC §2.1091 - MAXIMUM PERMISSIBLE EXPOSURE (MPE).....	7

## 1 Report Revision History

Report No.	Report Version	Description	Issue Date
15020390-FCC-H1	NONE	Original	April 29, 2015

## 2 Customer information

Applicant Name	Beijing Jia An Electronic Technology Co., Ltd
Applicant Add	No.19 GuCheng West Street, Shi Jing Shan District, Beijing 100043,CHINA
Manufacturer	Beijing Jia An Electronic Technology Co., Ltd
Manufacturer Add	No.19 GuCheng West Street, Shi Jing Shan District, Beijing 100043,CHINA

## 3 Test site information

Lab performing tests	SIEMIC (Nanjing-China) Laboratories
Lab Address	2-1 Longcang Avenue Yuhua Economic and Technology Development Park, Nanjing, China
FCC Test Site No.	986914
IC Test Site No.	4842B-1
Test Software	Labview of SIEMIC version 1.0

## 4 Equipment under Test (EUT) Information

Description of EUT:	Wifi Module
Main Model:	TA3200R1D-UFL
Serial Model:	N/A
Date EUT received:	November 10, 2014
Test Date(s):	April 27 to April 29, 2015
Output power	16.19 dBm (41.59mW)
Antenna Gain:	External Antenna Gain: 7dBi
Type of Modulation:	802.11b/g/n: DSSS/OFDM
RF Operating Frequency (ies):	802.11b/g/n(20M): 2412-2462 MHz(TX/RX)
Number of Channels:	802.11b/g/n(20M): 11CH
Port:	N/A
Input Power:	DC 3.3V
Trade Name :	N/A
FCC ID:	VVJ-TA3200R1D-SA

Note: the difference between the model TA3200R1D-SA and TA3200R1D-UFL is:  
TA3200R1D-SA use PCB antenna, TA3200R1D-UFL use External antenna, others are the same.  
So we only change the **Band-Edge** and **Radiated Spurious Emissions** in 15020390-FCC-R1, other test result please refer to report:  
14021186-FCC-R. FCC ID: VVJ-TA3200R1D-SA

## 5 FCC §2.1091 - Maximum Permissible exposure (MPE)

### Applicable Standard

According to §1.1307(b)(1), systems operating under the provisions of this section shall be operated in a manner that ensures that the public is not exposed to radio frequency energy level in excess of the Commission's guidelines.

According to §1.1310 and §2.1091 RF exposure is calculated.

Limits for General Population/Uncontrolled Exposure

Limits for General Population/Uncontrolled Exposure				
Frequency Range (MHz)	Electric Field Strength (V/m)	Magnetic Field Strength (A/m)	Power Density (mW/cm <sup>2</sup> )	Averaging Time (minutes)
0.3-1.34	614	1.63	*(100)	30
1.34-30	824/f	2.19/f	*(180/f <sup>2</sup> )	30
30-300	27.5	0.073	0.2	30
300-1500	/	/	f/1500	30
1500-100,000	/	/	1.0	30

f = frequency in MHz

\* = Plane-wave equivalent power density

### Test Data

Predication of MPE limit at a given distance

$$S = \frac{PG}{4\pi R^2}$$

Where: S = power density (in appropriate units, e.g. mW/cm<sup>2</sup>)

P = power input to the antenna (in appropriate units, e.g., mW).

G = power gain of the antenna in the direction of interest relative to an isotropic radiator, the power gain factor, is normally numeric gain.

R = distance to the center of radiation of the antenna (appropriate units, e.g., cm)

Type	Test mode	CH	Freq (MHz)	Conducted Power (dBm)	Tune Up Power (dBm)
Output power	802.11b	Low	2412	15.96	15.5±1
		Mid	2437	16.19	
		High	2462	15.23	
	802.11g	Low	2412	11.34	11.5±1
		Mid	2437	12.17	
		High	2462	11.17	
	802.11n(20M)	Low	2412	10.16	10.5±1
		Mid	2437	11.22	
		High	2462	9.77	

For the antenna manufacturer provide only used limited to ERP/EIRP or radiated spurious emission test. The MPE evaluation as below:

### 802.11b

The maximum peak output power (turn-up power) in low channel of WIFI is 16.5 dBm

Maximum peak output power (turn-up power) at antenna input terminal: 44.67 (mW)

Prediction distance: >20 (cm)

Predication frequency: 2412(MHz) lowest frequency

Antenna Gain (typical): 1 (dBi)

Antenna Gain (typical): 1.259 (numeric)

The worst case is power density at predication frequency at 20 cm: 0.0112(mW/cm<sup>2</sup>)

MPE limit for general population exposure at prediction frequency: 1 (mW/cm<sup>2</sup>)

$0.0112(mW/cm^2) < 1(mW/cm^2)$

The maximum peak output power (turn-up power) in Middle channel of WIFI is 16.5 dBm

Maximum peak output power (turn-up power) at antenna input terminal: 44.67 (mW)

Prediction distance: >20 (cm)

Predication frequency: 2437(MHz) lowest frequency

Antenna Gain (typical): 1 (dBi)

Antenna Gain (typical): 1.259 (numeric)

The worst case is power density at predication frequency at 20 cm: 0.0112(mW/cm<sup>2</sup>)

MPE limit for general population exposure at prediction frequency: 1 (mW/cm<sup>2</sup>)

$0.0112 (mW/cm^2) < 1(mW/cm^2)$

The maximum peak output power (turn-up power) in High channel of WIFI is 16.5dBm

Maximum peak output power (turn-up power) at antenna input terminal: 44.67 (mW)

Prediction distance: >20 (cm)

Predication frequency: 2462(MHz) lowest frequency

Antenna Gain (typical): 1 (dBi)

Antenna Gain (typical): 1.259(numeric)

The worst case is power density at predication frequency at 20 cm: 0.0112(mW/cm<sup>2</sup>)

MPE limit for general population exposure at prediction frequency: 1 (mW/cm<sup>2</sup>)

$0.0112 (mW/cm^2) < 1(mW/cm^2)$



### 802.11g

The maximum peak output power (turn-up power) in low channel of WIFI is 12.5 dBm

Maximum peak output power (turn-up power) at antenna input terminal: 17.78(mW)

Prediction distance: >20 (cm)

Predication frequency: 2412(MHz) lowest frequency

Antenna Gain (typical): 1 (dBi)

Antenna Gain (typical): 1.259(numeric)

The worst case is power density at predication frequency at 20 cm: 0.0045(mW/cm<sup>2</sup>)

MPE limit for general population exposure at prediction frequency: 1 (mW/cm<sup>2</sup>)

$0.0045 \text{ (mW/cm}^2\text{)} < 1 \text{ (mW/cm}^2\text{)}$

The maximum peak output power (turn-up power) in Middle channel of WIFI is 12.5 dBm

Maximum peak output power (turn-up power) at antenna input terminal: 17.78(mW)

Prediction distance: >20 (cm)

Predication frequency: 2437(MHz) lowest frequency

Antenna Gain (typical): 1 (dBi)

Antenna Gain (typical): 1.259 (numeric)

The worst case is power density at predication frequency at 20 cm: 0.0045(mW/cm<sup>2</sup>)

MPE limit for general population exposure at prediction frequency: 1 (mW/cm<sup>2</sup>)

$0.0045 \text{ (mW/cm}^2\text{)} < 1 \text{ (mW/cm}^2\text{)}$

The maximum peak output power (turn-up power) in High channel of WIFI is 12.5 dBm

Maximum peak output power (turn-up power) at antenna input terminal: 17.78 (mW)

Prediction distance: >20 (cm)

Predication frequency: 2462(MHz) lowest frequency

Antenna Gain (typical): 1 (dBi)

Antenna Gain (typical): 1.259(numeric)

The worst case is power density at predication frequency at 20 cm: 0.0045(mW/cm<sup>2</sup>)

MPE limit for general population exposure at prediction frequency: 1 (mW/cm<sup>2</sup>)

$0.0045 \text{ (mW/cm}^2\text{)} < 1 \text{ (mW/cm}^2\text{)}$

### 802.11n(20M)

The maximum peak output power (turn-up power) in low channel of WIFI is 11.5 dBm

Maximum peak output power (turn-up power) at antenna input terminal: 14.13 (mW)

Prediction distance: >20 (cm)

Predication frequency: 2412(MHz) lowest frequency

Antenna Gain (typical): 1 (dBi)

Antenna Gain (typical): 1.259 (numeric)

The worst case is power density at predication frequency at 20 cm: 0.0035(mW/cm<sup>2</sup>)

MPE limit for general population exposure at prediction frequency: 1 (mW/cm<sup>2</sup>)

0.0035 (mW/cm<sup>2</sup>) < 1(mW/cm<sup>2</sup>)

The maximum peak output power (turn-up power) in Middle channel of WIFI is 11.5 dBm

Maximum peak output power (turn-up power) at antenna input terminal: 14.13 (mW)

Prediction distance: >20 (cm)

Predication frequency: 2437(MHz) lowest frequency

Antenna Gain (typical): 1 (dBi)

Antenna Gain (typical): 1.259(numeric)

The worst case is power density at predication frequency at 20 cm: 0.0035(mW/cm<sup>2</sup>)

MPE limit for general population exposure at prediction frequency: 1 (mW/cm<sup>2</sup>)

0.0035 (mW/cm<sup>2</sup>) < 1(mW/cm<sup>2</sup>)

The maximum peak output power (turn-up power) in High channel of WIFI is 11.5dBm

Maximum peak output power (turn-up power) at antenna input terminal: 14.13 (mW)

Prediction distance: >20 (cm)

Predication frequency: 2462(MHz) lowest frequency

Antenna Gain (typical): 1 (dBi)

Antenna Gain (typical): 1.259(numeric)

The worst case is power density at predication frequency at 20 cm: 0.0035(mW/cm<sup>2</sup>)

MPE limit for general population exposure at prediction frequency: 1 (mW/cm<sup>2</sup>)

0.0035 (mW/cm<sup>2</sup>) < 1(mW/cm<sup>2</sup>)

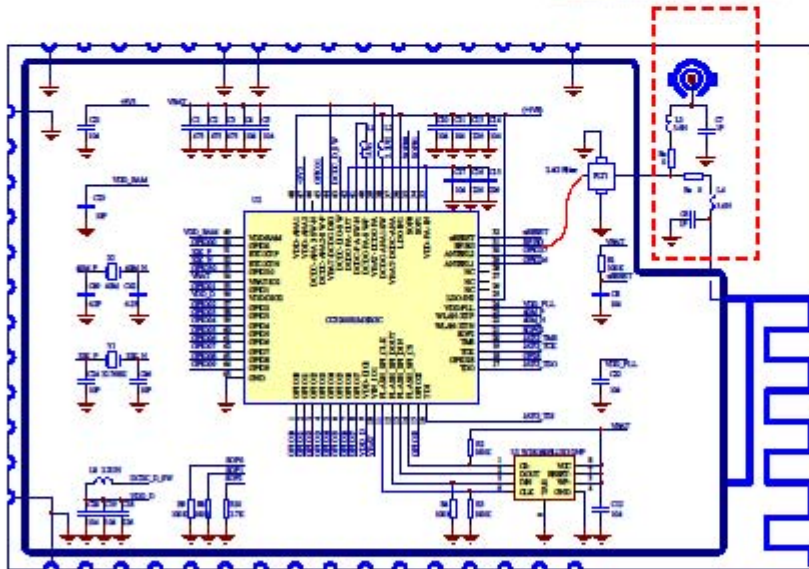
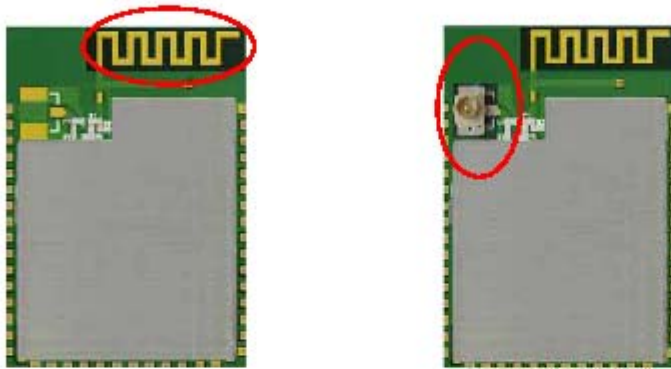
**Result: Pass**

### Difference of the Models

There are two antenna styles for TA3200R1D module and corresponding to two names: TA3200R1D-SA and TA3200R1D-UFL. Both of the two modules have the same electrical diagram, PCB Layout, also mounted the same components, and using the same material manufacture of PCB.

The only difference between TA3200R1D-SA module and TA3200R1D-UFL is antenna selection. There are two antenna styles for TA3200R1D Module.

TA3200R1D-SA(PCB Strip Antenna)      TA3200R1D-UFL(UFL Connector)



Ref	TA3200 R1D-SA	TA3200 R1D-UFL
Ra	0R	DNM
L4	3.6N	3.6N
C6	1P	1P
Ru	DNM	0R
L3	10P	10P
C7	DNM	DNM

Company Name: Beijing Jia An Electronic Technology Co., Ltd  
Address: No. 19 GuCheng West Street, Shi Jing Shan District, Beijing 100043, CHINA  
Authorized Person -Print Name: Helen Ban

Signature: *Helen Ban*