

Test Laboratory: UL CCS SAR Lab A

01_Bottom Face_UMTS850_Band V

Communication System: WCDMA (UMTS); Frequency: 824.2 MHz; Duty Cycle: 1:1
 Medium parameters used: $f = 825$ MHz; $\sigma = 0.977$ mho/m; $\epsilon_r = 55.081$; $\rho = 1000$ kg/m³
 Phantom section: Flat Section

Room Ambient Temperature: 24.0 deg. C; Liquid Temperature: 23.0 deg. C

DASY5 Configuration:

- Area Scan setting - Find Secondary Maximum Within: 2.0 dB and with a peak SAR value greater than 0.0012W/kg
- Probe: EX3DV4 - SN3686; ConvF(8.78, 8.78, 8.78); Calibrated: 1/24/2011
- Sensor-Surface: 2.5mm (Mechanical Surface Detection (Locations From Previous Scan Used)), Sensor-Surface: 2.5mm (Mechanical Surface Detection)
- Electronics: DAE4 Sn1239; Calibrated: 11/17/2010
- Phantom: ELI v4.0(A); Type: QDOVA001BB; Serial: 1119
- Measurement SW: DASY52, Version 52.6 (2);SEMCAD X Version 14.4.5 (3634)

UMTS/L-ch/Area Scan (141x201x1): Measurement grid: dx=15mm, dy=15mm

Maximum value of SAR (interpolated) = 1.275 mW/g

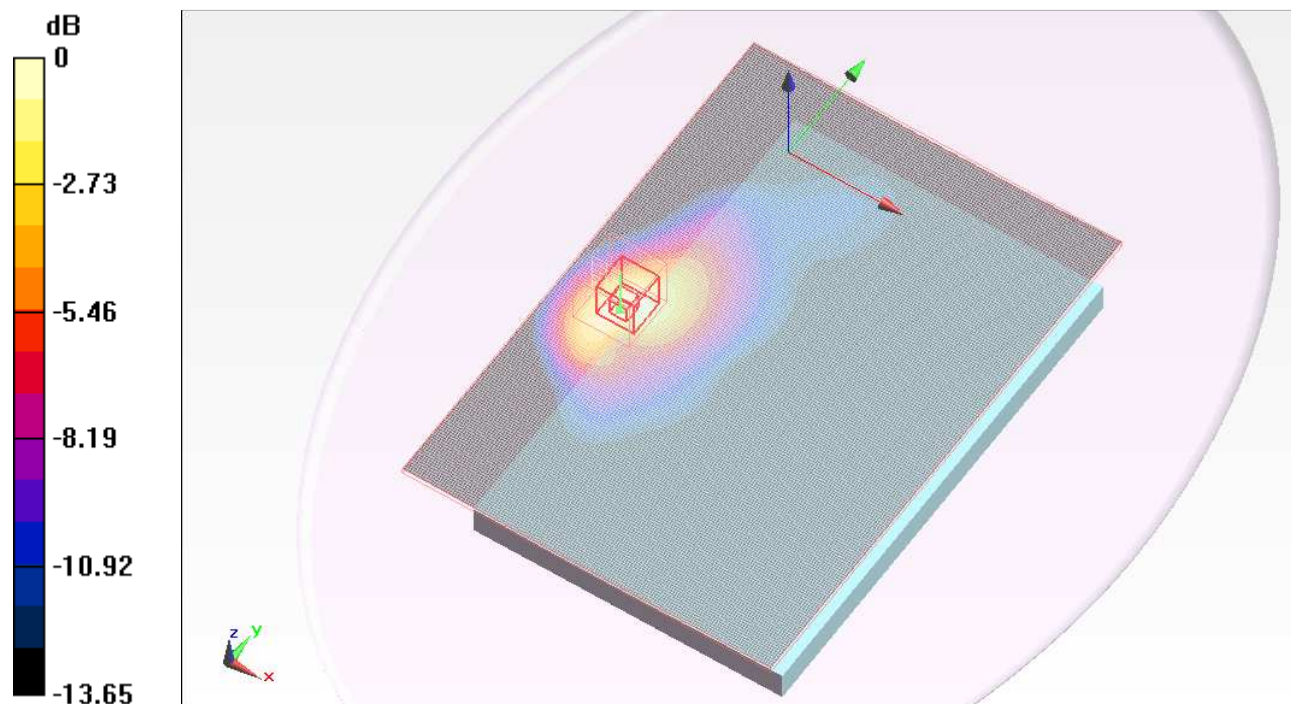
UMTS/L-ch/Zoom Scan (5x5x7)/Cube 0: Measurement grid: dx=8mm, dy=8mm, dz=5mm

Reference Value = 1.233 V/m; Power Drift = 0.06 dB

Peak SAR (extrapolated) = 1.680 W/kg

SAR(1 g) = 1.04 mW/g; SAR(10 g) = 0.636 mW/g

Maximum value of SAR (measured) = 1.302 mW/g



0 dB = 1.300mW/g

Test Laboratory: UL CCS SAR Lab A

01_Bottom Face_UMTS850_Band V

Communication System: WCDMA (UMTS); Frequency: 836.6 MHz; Duty Cycle: 1:1
 Medium parameters used (interpolated): $f = 836.6$ MHz; $\sigma = 0.989$ mho/m; $\epsilon_r = 54.969$; $\rho = 1000$ kg/m³
 Phantom section: Flat Section

Room Ambient Temperature: 24.0 deg. C; Liquid Temperature: 23.0 deg. C

DASY5 Configuration:

- Area Scan setting - Find Secondary Maximum Within: 2.0 dB and with a peak SAR value greater than 0.0012W/kg
- Probe: EX3DV4 - SN3686; ConvF(8.78, 8.78, 8.78); Calibrated: 1/24/2011
- Sensor-Surface: 2.5mm (Mechanical Surface Detection (Locations From Previous Scan Used)), Sensor-Surface: 2.5mm (Mechanical Surface Detection)
- Electronics: DAE4 Sn1239; Calibrated: 11/17/2010
- Phantom: ELI v4.0(A); Type: QDOVA001BB; Serial: 1119
- Measurement SW: DASY52, Version 52.6 (2); SEMCAD X Version 14.4.5 (3634)

UMTS/M-ch/Area Scan (141x201x1): Measurement grid: dx=15mm, dy=15mm

[Info: Interpolated medium parameters used for SAR evaluation.](#)

Maximum value of SAR (interpolated) = 1.421 mW/g

UMTS/M-ch/Zoom Scan (5x5x7)/Cube 0: Measurement grid: dx=8mm, dy=8mm, dz=5mm

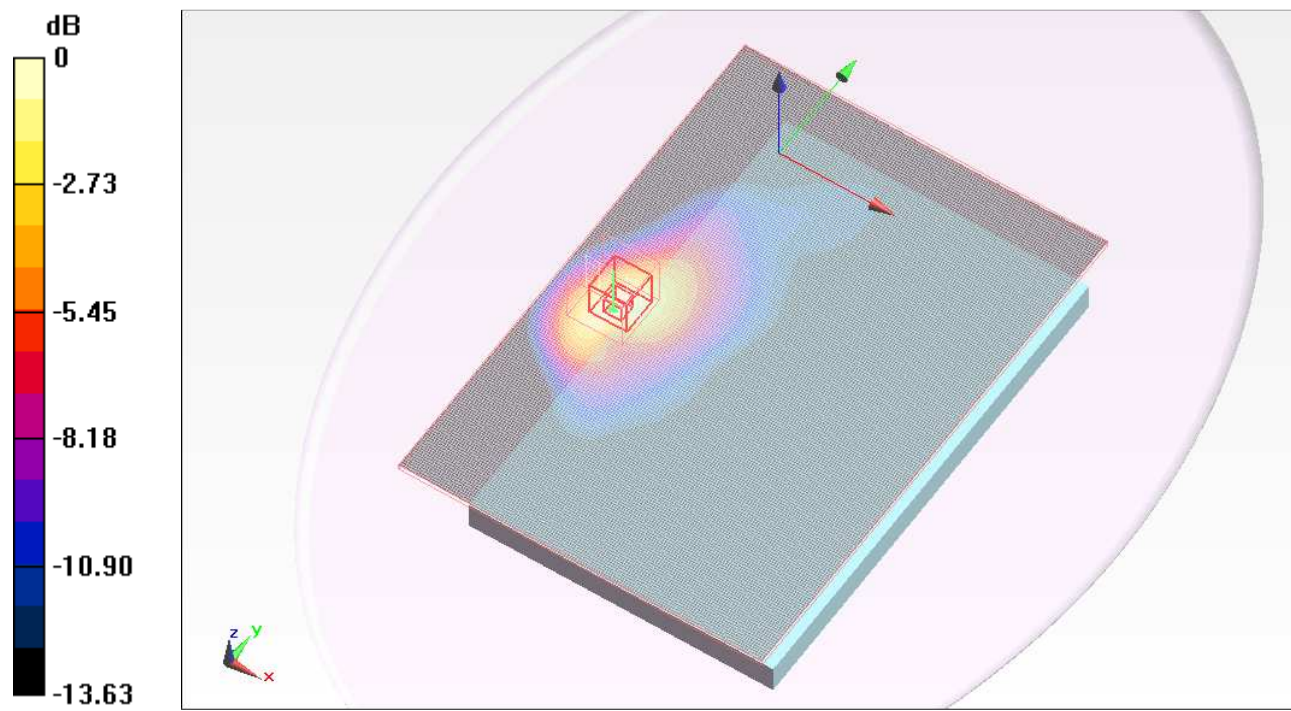
Reference Value = 1.349 V/m; Power Drift = -0.05 dB

Peak SAR (extrapolated) = 1.919 W/kg

SAR(1 g) = 1.18 mW/g; SAR(10 g) = 0.720 mW/g

[Info: Interpolated medium parameters used for SAR evaluation.](#)

Maximum value of SAR (measured) = 1.483 mW/g



0 dB = 1.480mW/g

Test Laboratory: UL CCS SAR Lab A

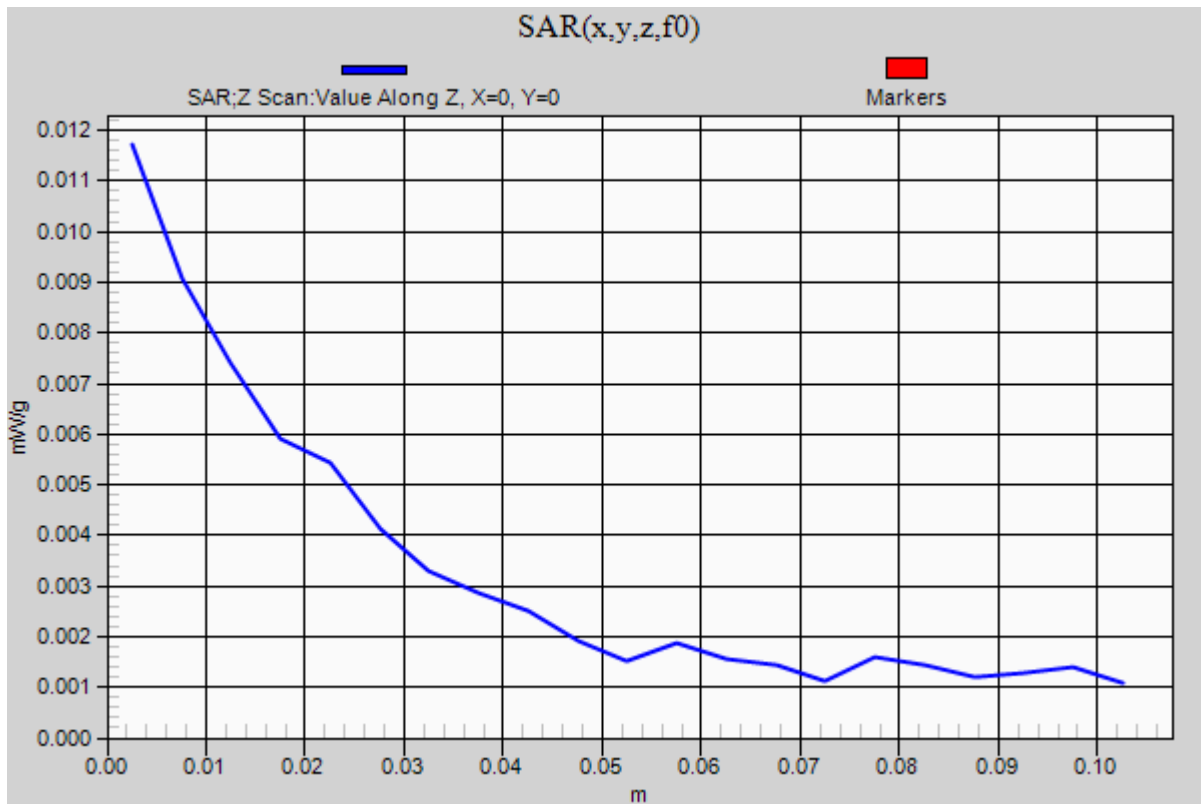
01_Bottom Face_UMTS850_Band V

Communication System: WCDMA (UMTS); Frequency: 836.6 MHz; Duty Cycle: 1:1

UMTS/M-ch/Z Scan (1x1x21): Measurement grid: dx=20mm, dy=20mm, dz=5mm

Info: [Interpolated medium parameters used for SAR evaluation.](#)

Maximum value of SAR (measured) = 0.012 mW/g



Test Laboratory: UL CCS SAR Lab A

01_Bottom Face_UMTS850_Band V

Communication System: WCDMA (UMTS); Frequency: 846.8 MHz; Duty Cycle: 1:1
 Medium parameters used (interpolated): $f = 846.8$ MHz; $\sigma = 0.999$ mho/m; $\epsilon_r = 54.867$; $\rho = 1000$ kg/m³
 Phantom section: Flat Section

Room Ambient Temperature: 24.0 deg. C; Liquid Temperature: 23.0 deg. C

DASY5 Configuration:

- Area Scan setting - Find Secondary Maximum Within: 2.0 dB and with a peak SAR value greater than 0.0012W/kg
- Probe: EX3DV4 - SN3686; ConvF(8.78, 8.78, 8.78); Calibrated: 1/24/2011
- Sensor-Surface: 2.5mm (Mechanical Surface Detection (Locations From Previous Scan Used)), Sensor-Surface: 2.5mm (Mechanical Surface Detection)
- Electronics: DAE4 Sn1239; Calibrated: 11/17/2010
- Phantom: ELI v4.0(A); Type: QDOVA001BB; Serial: 1119
- Measurement SW: DASY52, Version 52.6 (2); SEMCAD X Version 14.4.5 (3634)

UMTS/H-ch/Area Scan (141x201x1): Measurement grid: dx=15mm, dy=15mm

[Info: Interpolated medium parameters used for SAR evaluation.](#)

Maximum value of SAR (interpolated) = 1.188 mW/g

UMTS/H-ch/Zoom Scan (5x5x7)/Cube 0: Measurement grid: dx=8mm, dy=8mm, dz=5mm

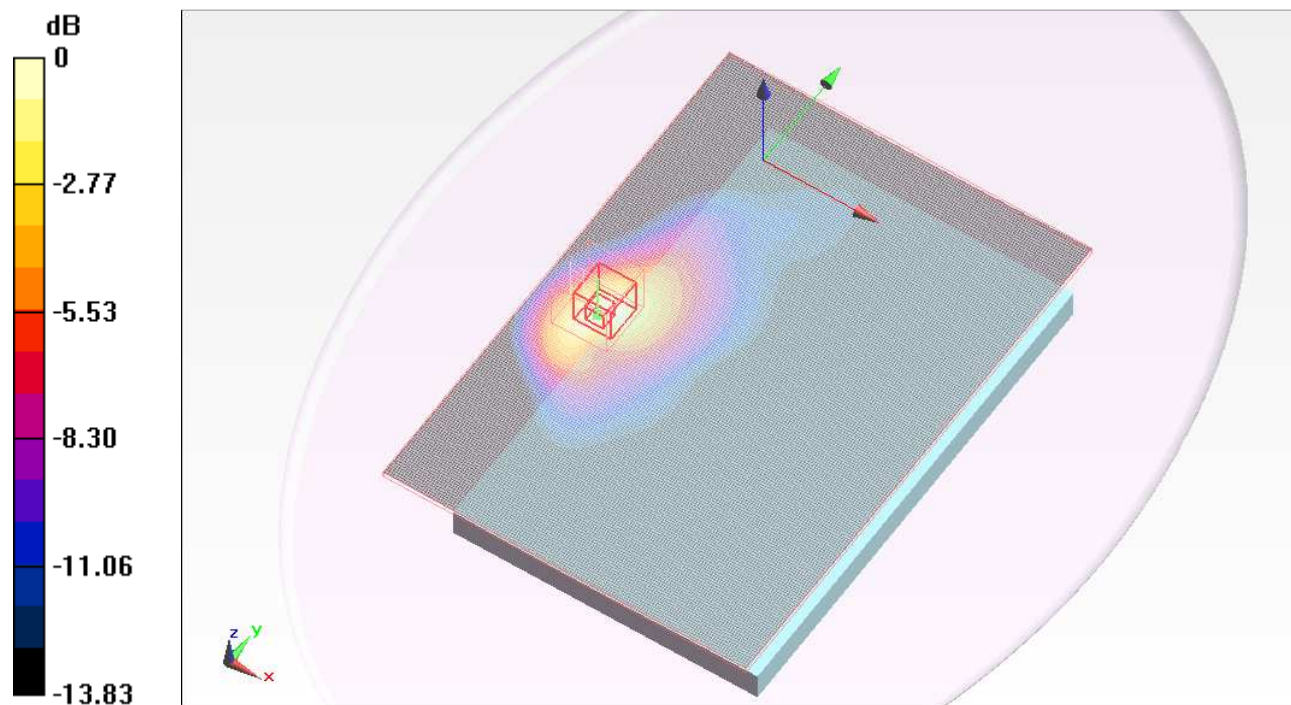
Reference Value = 1.232 V/m; Power Drift = 0.01 dB

Peak SAR (extrapolated) = 1.584 W/kg

SAR(1 g) = 0.968 mW/g; SAR(10 g) = 0.589 mW/g

[Info: Interpolated medium parameters used for SAR evaluation.](#)

Maximum value of SAR (measured) = 1.223 mW/g



0 dB = 1.220mW/g

Test Laboratory: UL CCS SAR Lab A

02_Secondary Landscape_UMTS850_Band V

Communication System: WCDMA (UMTS); Frequency: 836.6 MHz; Duty Cycle: 1:1
 Medium parameters used (interpolated): $f = 836.6$ MHz; $\sigma = 0.989$ mho/m; $\epsilon_r = 54.969$; $\rho = 1000$ kg/m³
 Phantom section: Flat Section

Room Ambient Temperature: 24.0 deg. C; Liquid Temperature: 23.0 deg. C

DASY5 Configuration:

- Area Scan setting - Find Secondary Maximum Within: 2.0 dB and with a peak SAR value greater than 0.0012W/kg
- Probe: EX3DV4 - SN3686; ConvF(8.78, 8.78, 8.78); Calibrated: 1/24/2011
- Sensor-Surface: 2.5mm (Mechanical Surface Detection)
- Electronics: DAE4 Sn1239; Calibrated: 11/17/2010
- Phantom: ELI v4.0(A); Type: QDOVA001BB; Serial: 1119
- Measurement SW: DASY52, Version 52.6 (2); SEMCAD X Version 14.4.5 (3634)

UMTS/M-ch/Area Scan (81x201x1): Measurement grid: dx=15mm, dy=15mm

[Info: Interpolated medium parameters used for SAR evaluation.](#)

Maximum value of SAR (interpolated) = 0.595 mW/g

UMTS/M-ch/Zoom Scan (5x5x7)/Cube 0: Measurement grid: dx=8mm, dy=8mm, dz=5mm

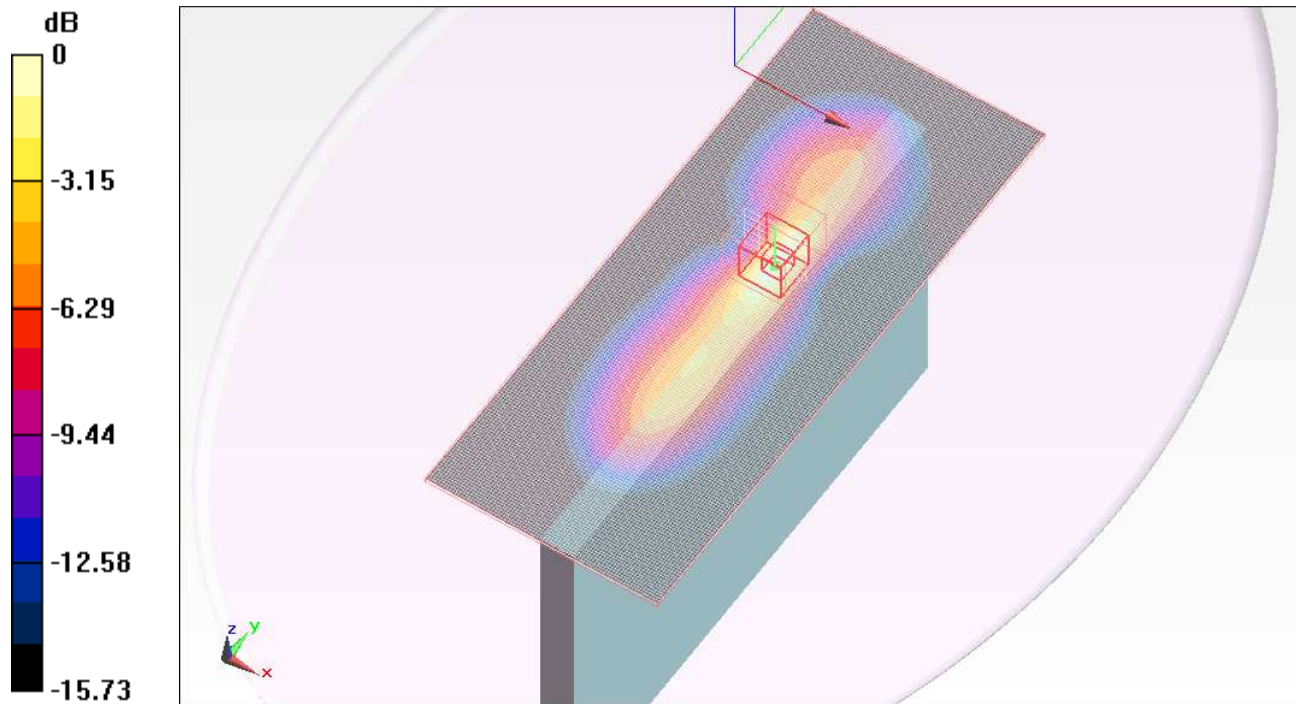
Reference Value = 1.645 V/m; Power Drift = -0.08 dB

Peak SAR (extrapolated) = 0.878 W/kg

SAR(1 g) = 0.423 mW/g; SAR(10 g) = 0.209 mW/g

[Info: Interpolated medium parameters used for SAR evaluation.](#)

Maximum value of SAR (measured) = 0.618 mW/g



0 dB = 0.620mW/g

Test Laboratory: UL CCS SAR Lab C

111213_@45_2 slots_UMTS850

Communication System: UMTS-FDD (WCDMA); Frequency: 836.6 MHz; Duty Cycle: 1:1
 Medium parameters used (interpolated): $f = 836.6$ MHz; $\sigma = 0.978$ mho/m; $\epsilon_r = 54.637$; $\rho = 1000$ kg/m³
 Phantom section: Flat Section

Room Ambient Temperature: 24.0 deg. C; Liquid Temperature: 23.0 deg. C

DASY5 Configuration:

- Area Scan setting - Find Secondary Maximum Within: 2.0 dB and with a peak SAR value greater than 0.0012W/kg
- Probe: EX3DV4 - SN3772; ConvF(8.57, 8.57, 8.57); Calibrated: 5/3/2011
- Sensor-Surface: 2.5mm (Mechanical Surface Detection (Locations From Previous Scan Used)), Sensor-Surface: 2.5mm (Mechanical Surface Detection)
- Electronics: DAE4 Sn1239; Calibrated: 11/17/2010
- Phantom: ELI v4.0 (B); Type: QDOVA001BB; Serial: 1121
- Measurement SW: DASY52, Version 52.6 (2); SEMCAD X Version 14.4.5 (3634)

45 Degrees/WCDMA B 5 M-ch/Area Scan (81x201x1): Measurement grid: dx=15mm, dy=15mm

[Info: Interpolated medium parameters used for SAR evaluation.](#)

Maximum value of SAR (interpolated) = 0.865 mW/g

45 Degrees/WCDMA B 5 M-ch/Zoom Scan (5x5x7)/Cube 0: Measurement grid: dx=8mm, dy=8mm, dz=5mm

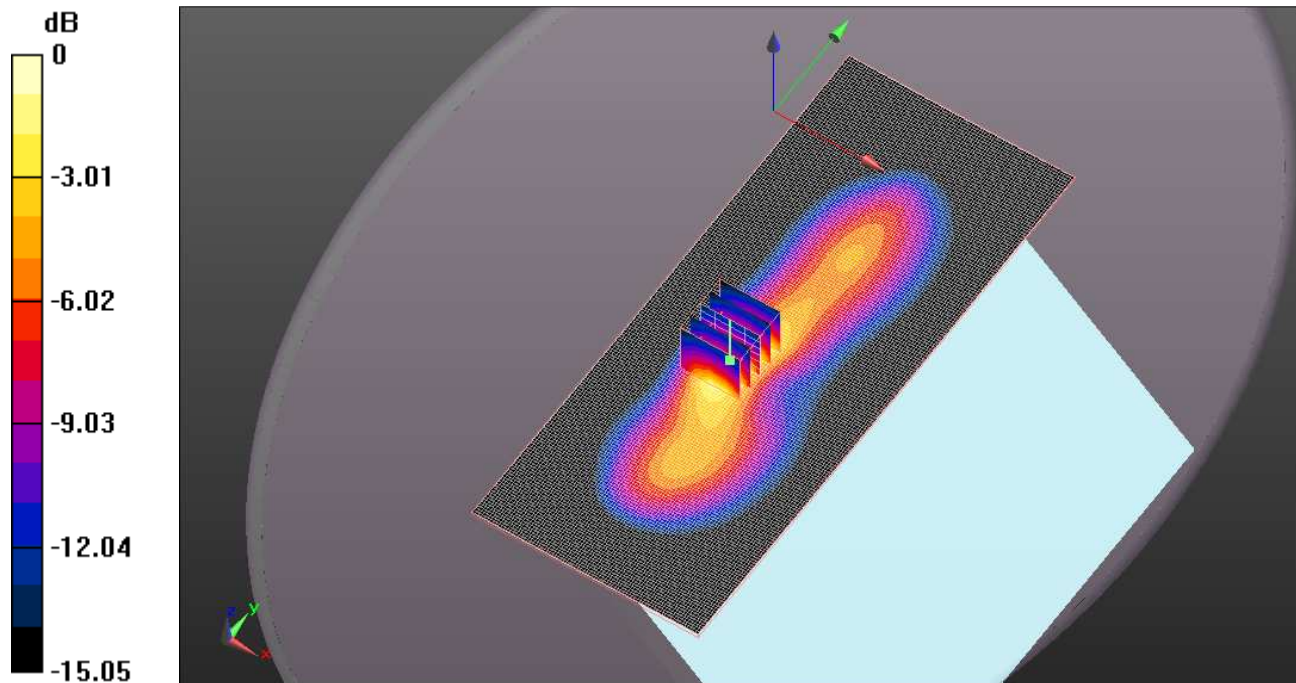
Reference Value = 29.335 V/m; Power Drift = -0.15 dB

Peak SAR (extrapolated) = 1.407 W/kg

SAR(1 g) = 0.723 mW/g; SAR(10 g) = 0.380 mW/g

[Info: Interpolated medium parameters used for SAR evaluation.](#)

Maximum value of SAR (measured) = 0.992 mW/g



0 dB = 0.990mW/g

Test Laboratory: UL CCS SAR Lab C

111213_@45_2 slots_UMTS850

Communication System: UMTS-FDD (WCDMA); Frequency: 836.6 MHz; Duty Cycle: 1:1

45 degrees/WCDMA B 5 M-ch/Z Scan (1x1x21): Measurement grid: dx=20mm, dy=20mm, dz=5mm

Info: [Interpolated medium parameters used for SAR evaluation.](#)

Maximum value of SAR (measured) = 0.826 mW/g

