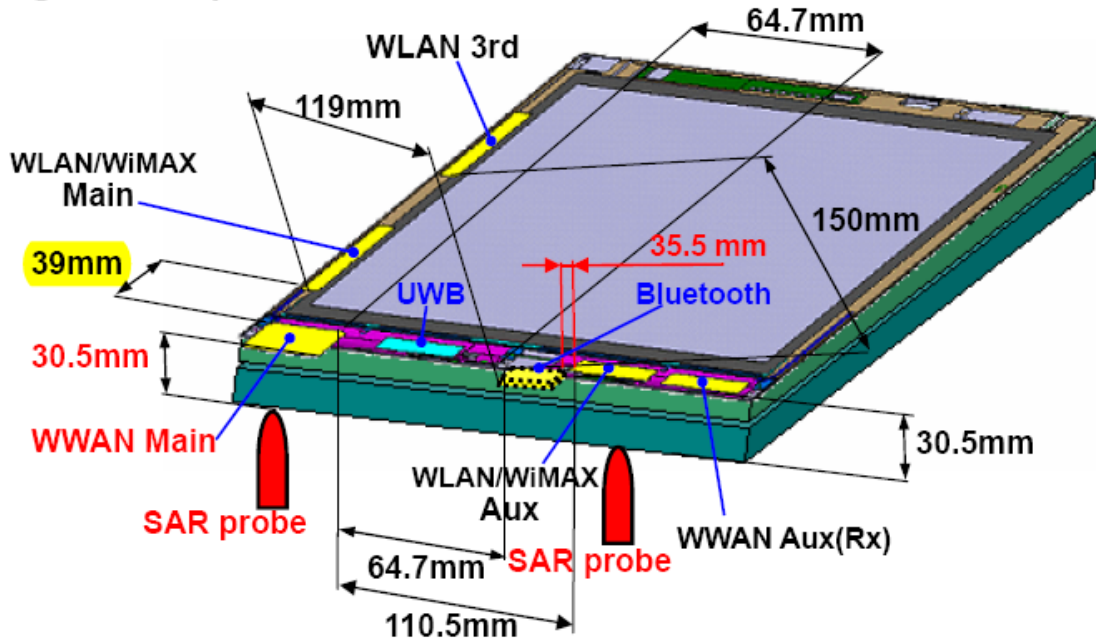


Peak SAR Location Separation Distance

Lenovo X200 tablet series

Physical Separation distance:

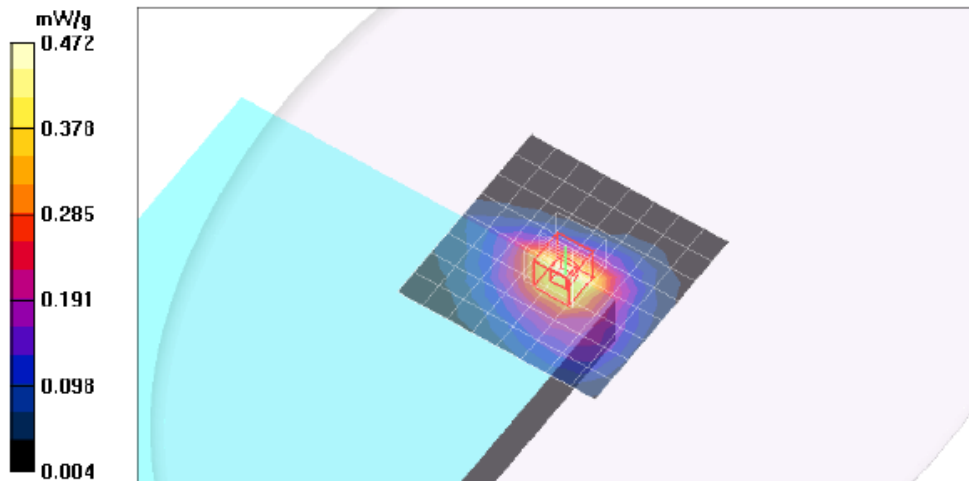
Figure-2: Lap Held



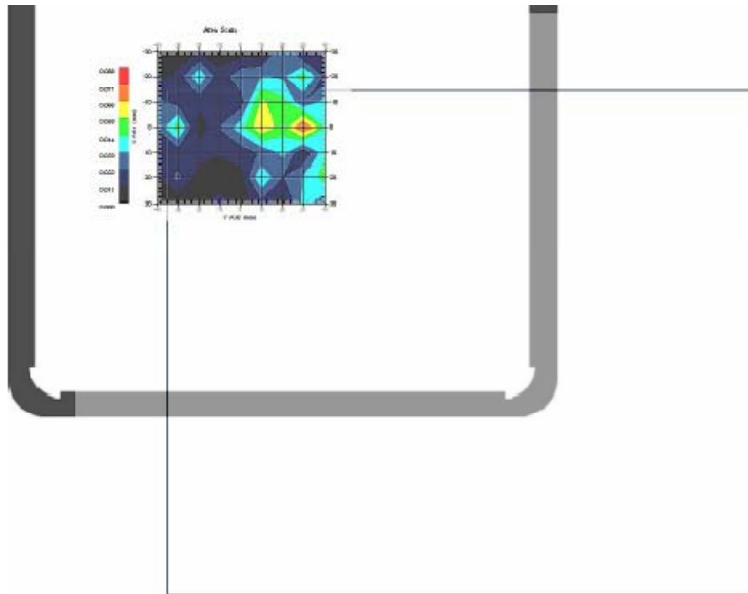
WWAN SAR Peak Location:

Wistron - Lap held - GPRS 2 slots - M ch/Zoom Scan (7x7x9)/Cube 0: Measurement grid:

dx=5mm, dy=5mm, dz=3mm
Reference Value = 11.8 V/m; Power Drift = 0.167 dB
Peak SAR (extrapolated) = 0.663 W/kg
SAR(1 g) = 0.408 mW/g; SAR(10 g) = 0.249 mW/g
Maximum value of SAR (measured) = 0.492 mW/g



WLAN Peak SAR location



1 gram SAR value : 0.081 W/kg
10 gram SAR value : 0.066 W/kg
Area Scan Peak SAR : 0.080 W/kg
Zoom Scan Peak SAR : 0.190 W/kg

Conclusion:

Due to WWAN SAR and WLAN SAR were measured with two difference SAR system, the SAR-to peak location separation distance can only be estimated. As indicated from the above two peak SAR distribution, the SAR to peak location separation distance will be greater than the antenna-to-antenna separation distance of 39 mm.