

Test of: Dell Inc.

Dell Inspiron 910 Netbook PC

To: OET Bulletin 65 Supplement C: (2001-01)

## Appendix 4. Photographs

This appendix contains the following photographs:

Photo Reference Number	Title
PHT/73658JD21/001	Test configuration for the measurement of Specific Absorption Rate (SAR)
PHT/73658JD21/002	Rear of Display Facing Phantom at 0mm Separation
PHT/73658JD21/003	Rear of Display Facing Phantom at 5mm Separation
PHT/73658JD21/004	Base of EUT Facing Phantom at 0mm Separation
PHT/73658JD21/005	Base of EUT Facing Phantom at 5mm Separation
PHT/73658JD21/006	Top of EUT facing Phantom at 0mm Separation
PHT/73658JD21/007	Top of EUT facing Phantom at 5mm Separation
PHT/73658JD21/008	Left Hand Side of EUT Facing Phantom at 0mm Separation
PHT/73658JD21/009	Left Hand Side of EUT Facing Phantom at 5mm Separation
PHT/73658JD21/010	Right Hand Side of EUT Facing Phantom at 0mm Separation
PHT/73658JD21/011	Right Hand Side of EUT Facing Phantom at 5mm Separation
PHT/73658JD21/012	Rear of EUT Display Closed
PHT/73658JD21/013	Base of EUT Closed
PHT/73658JD21/014	Display and Keypad of EUT
PHT/73658JD21/015	Internal View of EUT
PHT/73658JD21/016	Battery View
PHT/73658JD21/017	1800 & 1900 MHz Body Simulating Fluid Level
PHT/73658JD21/018	2450 MHz Body Simulating Fluid Level
PHT/73658JD21/019	900 MHz Body Simulating Fluid Level

Test of: Dell Inc.  
Dell Inspiron 910 Netbook PC

To: OET Bulletin 65 Supplement C: (2001-01)

---

PHT/73658JD21/001: Test configuration for the measurement of Specific Absorption Rate (SAR)



Test of: Dell Inc.  
Dell Inspiron 910 Netbook PC

To: OET Bulletin 65 Supplement C: (2001-01)

---

PHT/73658JD21/002: Rear of Display Facing Phantom at 0mm Separation



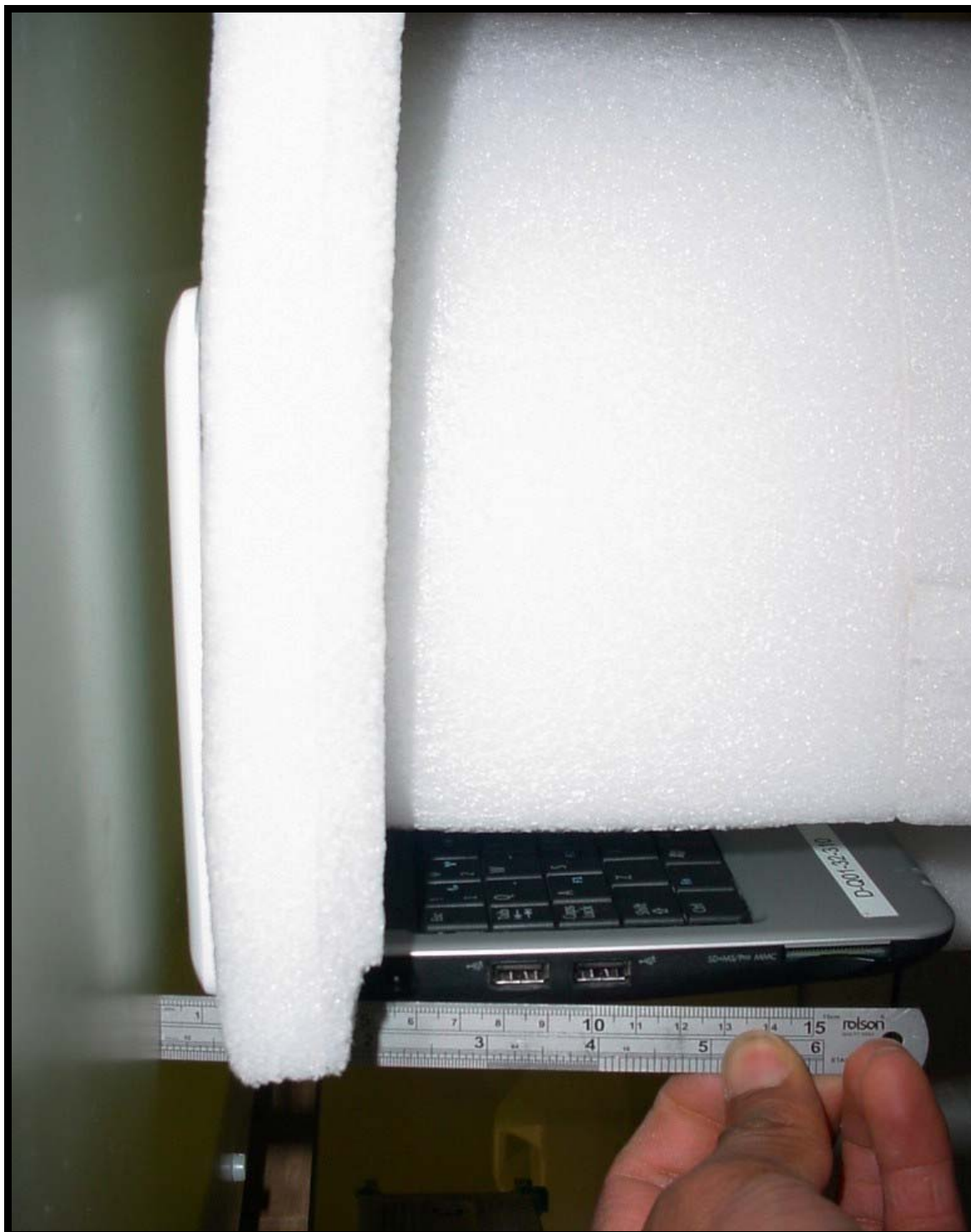
Test of: Dell Inc.

Dell Inspiron 910 Netbook PC

To: OET Bulletin 65 Supplement C: (2001-01)

---

PHT/73658JD21/003: Rear of Display Facing Phantom at 5mm Separation



Test of: Dell Inc.  
Dell Inspiron 910 Netbook PC

To: OET Bulletin 65 Supplement C: (2001-01)

---

PHT/73658JD21/004: Base of EUT Facing Phantom at 0mm Separation



Test of: Dell Inc.

Dell Inspiron 910 Netbook PC

To: OET Bulletin 65 Supplement C: (2001-01)

---

PHT/73658JD21/005: Base of EUT Facing Phantom at 5mm Separation

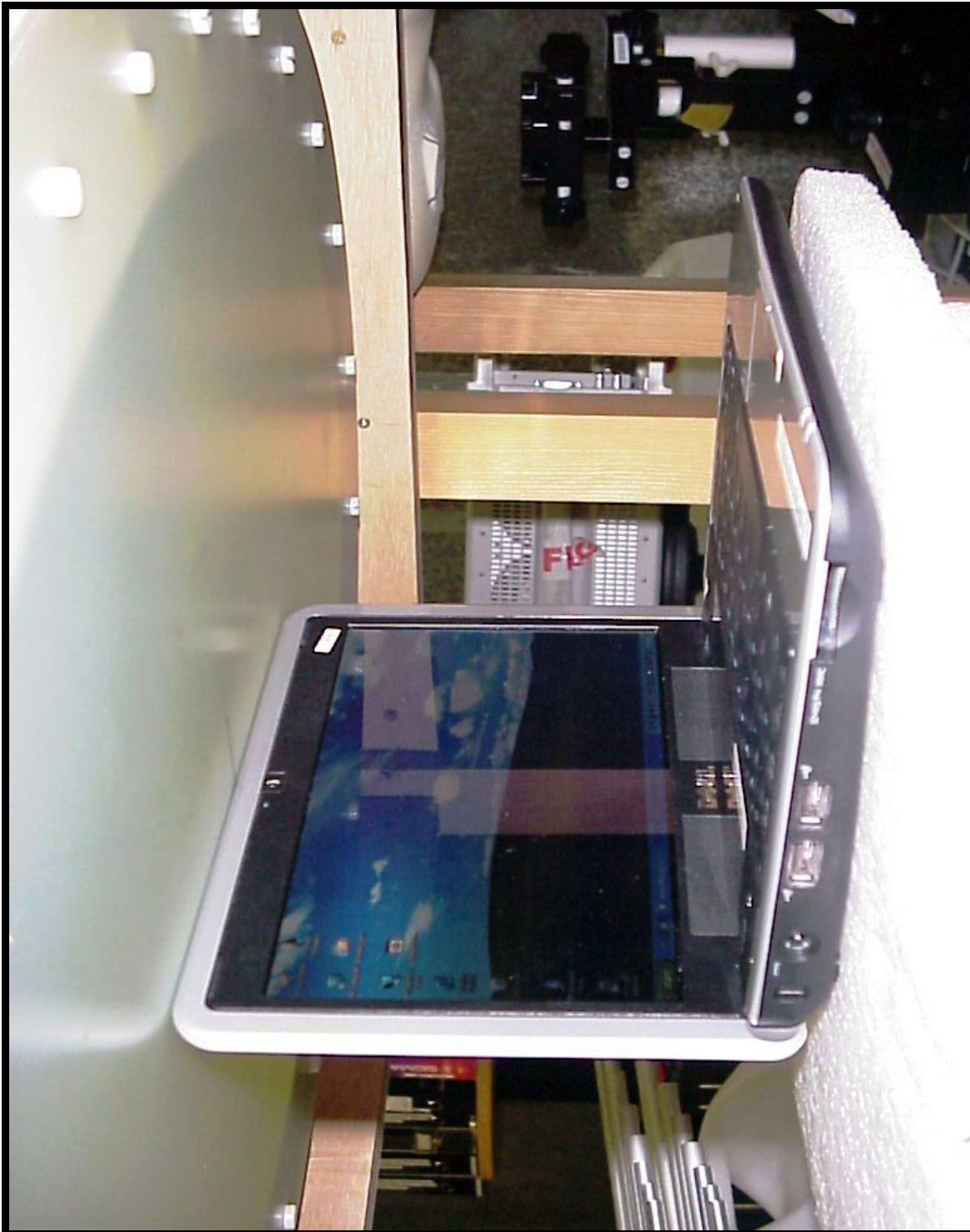


Test of: Dell Inc.  
Dell Inspiron 910 Netbook PC

To: OET Bulletin 65 Supplement C: (2001-01)

---

PHT/73658JD21/006: Top of EUT facing Phantom at 0mm Separation



Test of: Dell Inc.  
Dell Inspiron 910 Netbook PC

To: OET Bulletin 65 Supplement C: (2001-01)

PHT/73658JD21/007: Top of EUT facing Phantom at 5mm Separation



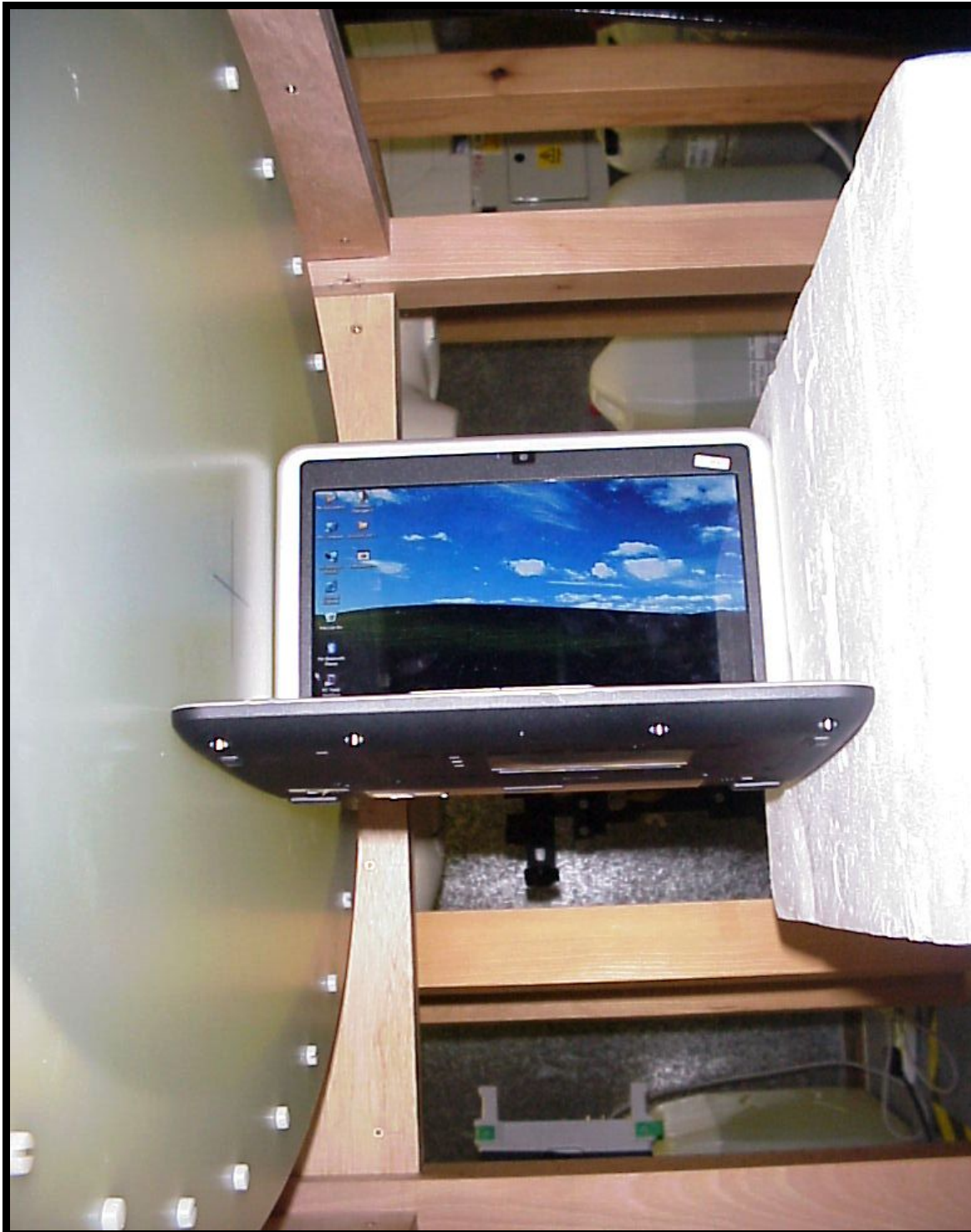


Test of: Dell Inc.  
Dell Inspiron 910 Netbook PC

To: OET Bulletin 65 Supplement C: (2001-01)

---

PHT/73658JD21/008: Left Hand Side of EUT Facing Phantom at 0mm Separation



Test of: Dell Inc.  
Dell Inspiron 910 Netbook PC

To: OET Bulletin 65 Supplement C: (2001-01)

PHT/73658JD21/009: Left Hand Side of EUT Facing Phantom at 5mm Separation



Test of: Dell Inc.  
Dell Inspiron 910 Netbook PC

To: OET Bulletin 65 Supplement C: (2001-01)

---

PHT/73658JD21/010: Right Hand Side of EUT Facing Phantom at 0mm Separation



Test of: Dell Inc.  
Dell Inspiron 910 Netbook PC  
To: OET Bulletin 65 Supplement C: (2001-01)

PHT/73658JD21/011: Right Hand Side of EUT Facing Phantom at 5mm Separation



Test of: Dell Inc.  
Dell Inspiron 910 Netbook PC

To: OET Bulletin 65 Supplement C: (2001-01)

---

PHT/73658JD21/012: Rear of EUT Display Closed



Test of: Dell Inc.

Dell Inspiron 910 Netbook PC

To: OET Bulletin 65 Supplement C: (2001-01)

PHT/73658JD21/013: Base of EUT Closed



Test of: Dell Inc.  
Dell Inspiron 910 Netbook PC

To: OET Bulletin 65 Supplement C: (2001-01)

---

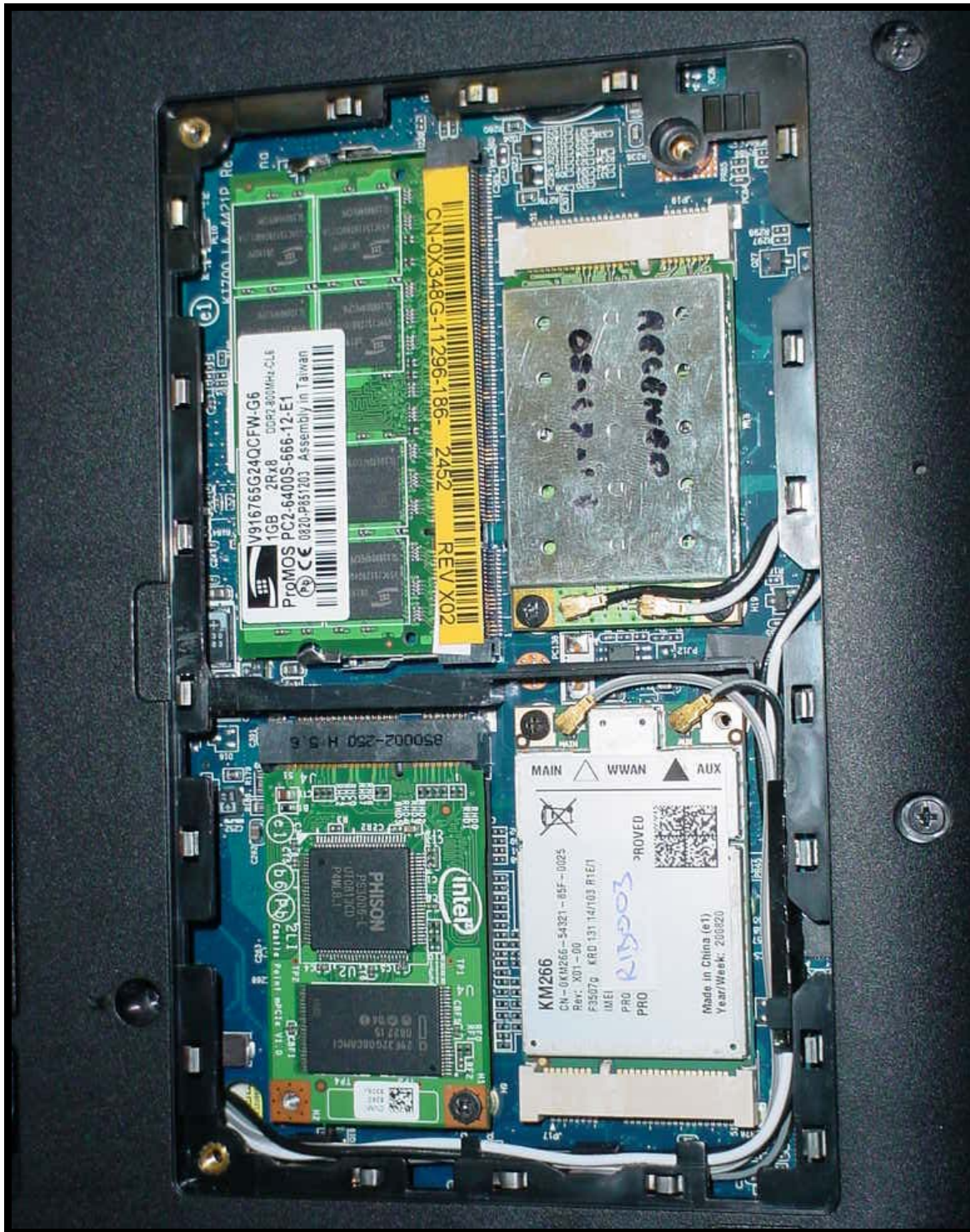
PHT/73658JD21/014: Display and Keypad of EUT



Test of: Dell Inc.  
Dell Inspiron 910 Netbook PC

To: OET Bulletin 65 Supplement C: (2001-01)

PHT/73658JD21/015: Internal View of EUT







Test of: Dell Inc.  
Dell Inspiron 910 Netbook PC

To: OET Bulletin 65 Supplement C: (2001-01)

---

PHT/73658JD21/017: 1800 & 1900 MHz Body Simulating Fluid Level

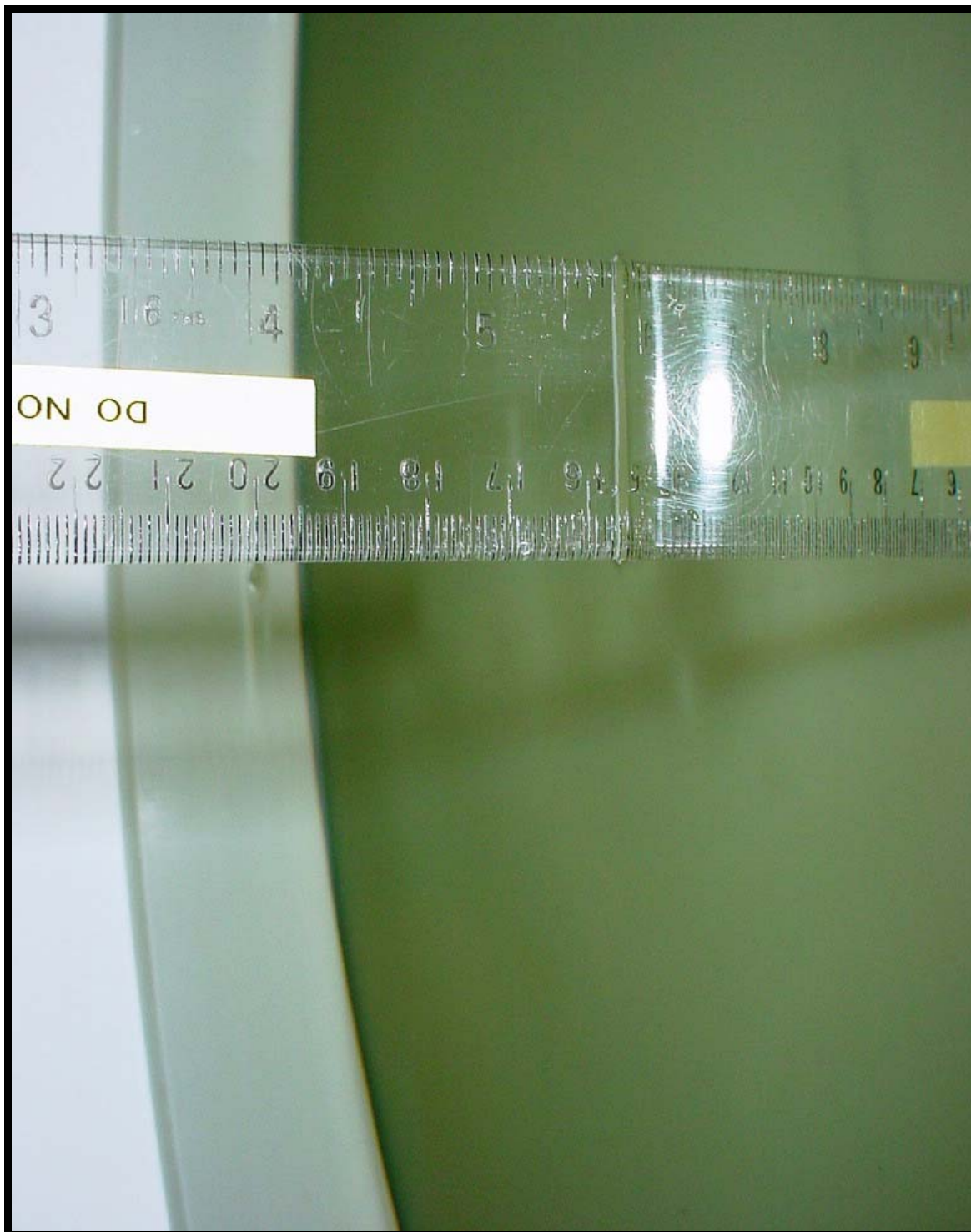


Test of: Dell Inc.  
Dell Inspiron 910 Netbook PC

To: OET Bulletin 65 Supplement C: (2001-01)

---

PHT/73658JD21/018: 2450 MHz Body Simulating Fluid Level

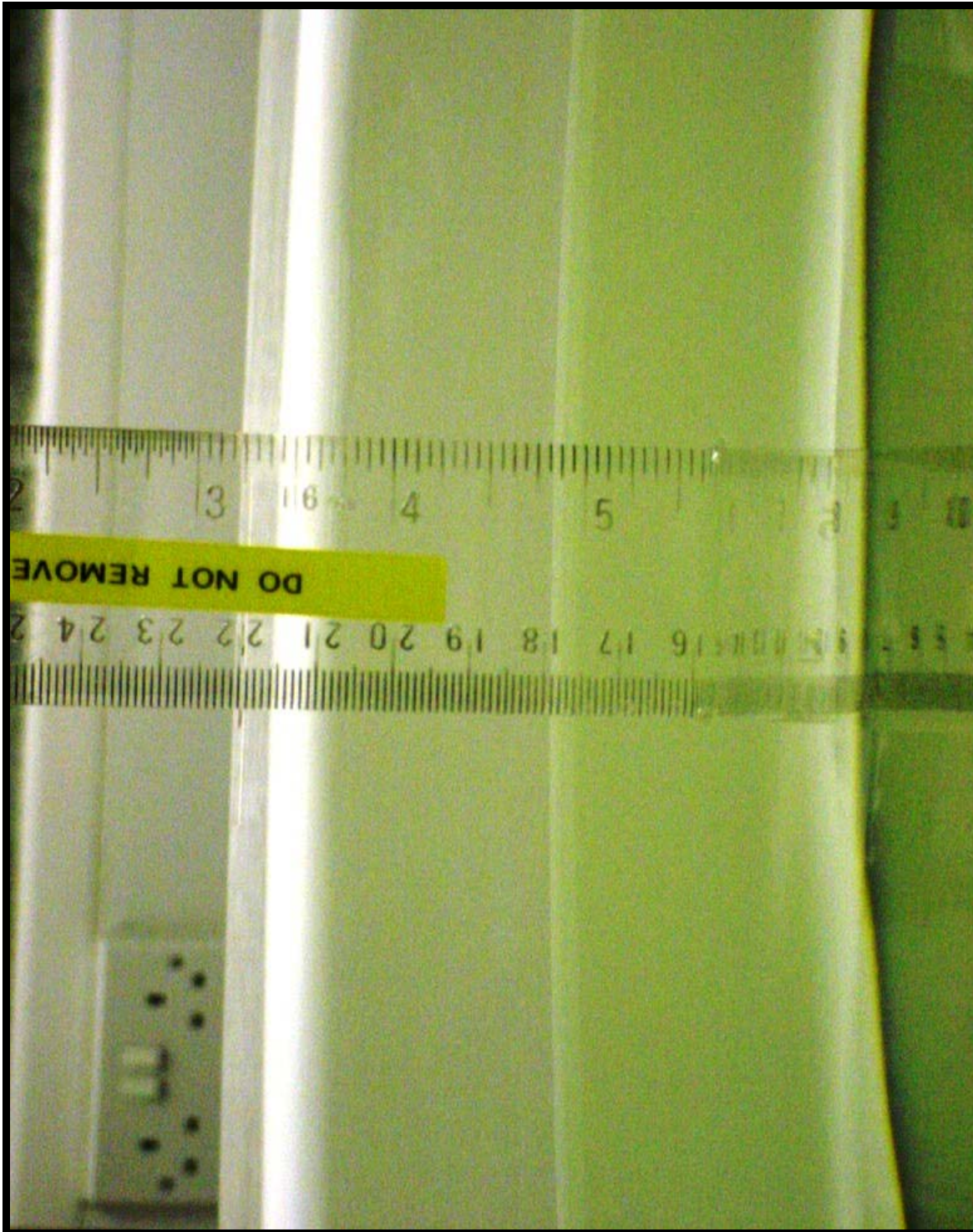


Test of: Dell Inc.  
Dell Inspiron 910 Netbook PC

To: OET Bulletin 65 Supplement C: (2001-01)

---

PHT/73658JD21/019: 900 MHz Body Simulating Fluid Level



Test of: Dell Inc.

Dell Inspiron 910 Netbook PC

To: OET Bulletin 65 Supplement C: (2001-01)

**Appendix 5. Validation of System**

Prior to the assessment, the system was verified in the flat region of the phantom.

A 900 MHz, 1800 MHz, 1900 MHz and 2450 MHz dipole was used. A forward power of 250 mW was applied to the dipole and the system was verified to a tolerance of  $\pm 5\%$  for the 900 MHz, 1800 MHz, 1900 MHz and 2450 MHz dipole. The applicable verification (normalised to 1 Watt).

**Date: 06/09/2008****Validation Dipole and Serial Number: D900V2 SN:185**

Simulant	Frequency (MHz)	Room Temperature	Liquid Temperature	Parameters	Target Value	Measured Value	Deviation (%)	Limit (%)
Body	900	23.0 °C	23.0 °C	$\epsilon_r$	55.00	53.06	-3.53	5.00
				$\sigma$	1.05	1.02	-3.27	5.00
				1g SAR	10.50	10.40	-0.95	5.00
				10g SAR	6.89	6.76	-1.88	5.00

**Date: 06/09/2008****Validation Dipole and Serial Number: D1900V2:SN:540**

Simulant	Frequency (MHz)	Room Temperature	Liquid Temperature	Parameters	Target Value	Measured Value	Deviation (%)	Limit (%)
Body	1900	23.0 °C	23.0 °C	$\epsilon_r$	53.30	53.02	-0.53	5.00
				$\sigma$	1.52	1.56	2.47	5.00
				1g SAR	38.00	40.00	5.26	5.00
				10g SAR	20.70	20.36	-1.64	5.00

**Date: 04/09/2008****Validation Dipole and Serial Number: D900V2 SN:185**

Simulant	Frequency (MHz)	Room Temperature	Liquid Temperature	Parameters	Target Value	Measured Value	Deviation (%)	Limit (%)
Body	900	23.0 °C	23.0 °C	$\epsilon_r$	55.00	54.17	-1.50	5.00
				$\sigma$	1.05	1.02	-2.97	5.00
				1g SAR	10.50	10.40	-0.95	5.00
				10g SAR	6.89	6.76	-1.88	5.00

Test of: Dell Inc.

Dell Inspiron 910 Netbook PC

To: OET Bulletin 65 Supplement C: (2001-01)

**Date: 07/09/2008****Validation Dipole and Serial Number: D1900V2:SN:540**

Simulant	Frequency (MHz)	Room Temperature	Liquid Temperature	Parameters	Target Value	Measured Value	Deviation (%)	Limit (%)
Body	1900	23.0 °C	23.0 °C	$\epsilon_r$	53.30	53.02	-0.53	5.00
				$\sigma$	1.52	1.56	2.47	5.00
				1g SAR	38.00	39.68	4.42	5.00
				10g SAR	20.70	20.16	-2.60	5.00

**Date: 04/09/2008****Validation Dipole and Serial Number: D1900V2:SN:540**

Simulant	Frequency (MHz)	Room Temperature	Liquid Temperature	Parameters	Target Value	Measured Value	Deviation (%)	Limit (%)
Body	1900	23.0 °C	23.0 °C	$\epsilon_r$	53.30	51.31	-3.74	5.00
				$\sigma$	1.52	1.54	1.39	5.00
				1g SAR	38.00	39.56	4.10	5.00
				10g SAR	20.70	20.12	-2.80	5.00

**Date: 24/08/2008****Validation Dipole and Serial Number: D2450V2:SN:725**

Simulant	Frequency (MHz)	Room Temperature	Liquid Temperature	Parameters	Target Value	Measured Value	Deviation (%)	Limit (%)
Body	2450	23.0 °C	23.0 °C	$\epsilon_r$	52.70	50.56	-4.07	5.00
				$\sigma$	1.95	2.03	3.94	5.00
				1g SAR	53.30	57.20	7.32	5.00
				10g SAR	24.50	26.36	7.59	5.00

**Date: 22/08/2008****Validation Dipole and Serial Number: D2450V2:SN:725**

Simulant	Frequency (MHz)	Room Temperature	Liquid Temperature	Parameters	Target Value	Measured Value	Deviation (%)	Limit (%)
Body	2450	23.0 °C	23.0 °C	$\epsilon_r$	52.70	50.49	-4.19	5.00
				$\sigma$	1.95	1.93	-0.94	5.00
				1g SAR	53.30	55.60	4.32	10.00
				10g SAR	24.50	25.48	4.00	10.00

Test of: Dell Inc.

Dell Inspiron 910 Netbook PC

To: OET Bulletin 65 Supplement C: (2001-01)

**Date: 25/08/2008****Validation Dipole and Serial Number: D2450V2:SN:725**

Simulant	Frequency (MHz)	Room Temperature	Liquid Temperature	Parameters	Target Value	Measured Value	Deviation (%)	Limit (%)
Body	2450	23.0 °C	23.0 °C	$\epsilon_r$	52.70	50.56	-4.07	5.00
				$\sigma$	1.95	2.03	3.94	5.00
				1g SAR	53.30	57.20	7.32	10.00
				10g SAR	24.50	26.28	7.27	10.00

**Date: 05/09/2008****Validation Dipole and Serial Number: D1900V2:SN:540**

Simulant	Frequency (MHz)	Room Temperature	Liquid Temperature	Parameters	Target Value	Measured Value	Deviation (%)	Limit (%)
Body	1900	23.0 °C	23.0 °C	$\epsilon_r$	53.30	51.31	-3.74	5.00
				$\sigma$	1.52	1.54	1.39	5.00
				1g SAR	38.00	39.96	5.15	10.00
				10g SAR	20.70	20.32	-1.83	10.00

**Date: 29/08/2008****Validation Dipole and Serial Number: D1900V2:SN:540**

Simulant	Frequency (MHz)	Room Temperature	Liquid Temperature	Parameters	Target Value	Measured Value	Deviation (%)	Limit (%)
Body	1900	23.0 °C	23.0 °C	$\epsilon_r$	53.30	51.53	-3.32	5.00
				$\sigma$	1.52	1.56	2.91	5.00
				1g SAR	38.00	39.48	3.89	10.00
				10g SAR	20.70	20.12	-2.80	10.00

**Date: 25/08/2008****Validation Dipole and Serial Number: D1900V2:SN:540**

Simulant	Frequency (MHz)	Room Temperature	Liquid Temperature	Parameters	Target Value	Measured Value	Deviation (%)	Limit (%)
Body	1900	23.0 °C	23.0 °C	$\epsilon_r$	53.30	52.73	-1.07	5.00
				$\sigma$	1.52	1.58	4.21	5.00
				1g SAR	38.00	39.48	3.89	10.00
				10g SAR	20.70	20.24	-2.22	10.00

Test of: Dell Inc.

Dell Inspiron 910 Netbook PC

To: OET Bulletin 65 Supplement C: (2001-01)

**Appendix 6. Simulated Tissues**

The body mixture consists of water and glycol. Visual inspection is made to ensure air bubbles are not trapped during the mixing process. The mixture is calibrated to obtain proper dielectric constant (permittivity) and conductivity of the tissue.

Ingredient	Frequency
	2450 MHz Body
De-Ionised Water	68.64
Diglycol Butyl Ether (DGBE)	31.37

Ingredient	Frequency
	1800/1900 MHz Body
De-Ionised Water	69.79%
Diglycol Butyl Ether (DGBE)	30.00%
Salt	0.20%

Ingredient	Frequency
	835/850/900 MHz Body
De-Ionised Water	50.75%
Sugar	48.21%
Salt	0.94%
Kathon	0.10%



Test of: Dell Inc.

Dell Inspiron 910 Netbook PC

To: OET Bulletin 65 Supplement C: (2001-01)

---

## **Appendix 7. DASY4 System Details**

### **A.7.1. DASY4 SAR Measurement System**

RFI Global Services Ltd, SAR measurement facility utilises the Dosimetric Assessment System (DASY™) manufactured by Schmid & Partner Engineering AG (SPEAG™) of Zurich, Switzerland. The DASY4 system is comprised of the robot controller, computer, near-field probe, probe alignment sensor, and the SAM phantom containing brain or muscle equivalent material. The robot is a six-axis industrial robot performing precise movements to position the probe to the location (points) of maximum electromagnetic field (EMF). A cell controller system contains the power supply, robot controller; teach pendant (Joystick), and remote control. This is used to drive the robot motors. The Staubli robot is connected to the cell controller to allow software manipulation of the robot. The data acquisition electronics (DAE) performs signal amplification, signal multiplexing, AD-conversion, offset measurements, mechanical surface detection, collision detection etc. The DAE is connected to the Electro-optical coupler (EOC). The EOC performs the conversion from the optical into digital electric signal of the DAE and transfers data to the PC plug-in card. The DAE3 utilises a highly sensitive electrometer-grade preamplifier with auto-zeroing, a channel and gain-switching multiplexer, a fast 16-bit AD-converter and a command decoder and control logic unit. Transmission to the PC-card is accomplished through an optical downlink for data and status information and an optical uplink for commands and clock lines. The mechanical probe-mounting device includes two different sensor systems for frontal and sidewise probe contacts. They are also used for mechanical surface detection and probe collision detection. The robot uses its own controller with a built in VME-bus computer.

---

Test of: Dell Inc.

Dell Inspiron 910 Netbook PC

To: OET Bulletin 65 Supplement C: (2001-01)

**A.7.2. DASY4 SAR System Specifications****Robot System**

Positioner:	Stäubli Unimation Corp. Robot Model: RX90L
Repeatability:	0.025 mm
No. of Axis:	6
Serial Number:	F00/SD89A1/A/01
Reach:	1185 mm
Payload:	3.5 kg
Control Unit:	CS7
Programming Language:	V+

**Data Acquisition Electronic (DAE) System**

Serial Number:	DAE3 SN:394
----------------	-------------

**Cell Controller**

PC:	Dell Precision 340
Operating System:	Windows 2000
Data Card:	DASY4 Measurement Server
Serial Number:	1080

**Data Converter**

Features:	Signal Amplifier, multiplexer, A/D converted and control logic.
Software:	DASY4 Software
Connecting Lines:	Optical downlink for data and status info. Optical uplink for commands and clock.

**PC Interface Card**

Function:	24 bit (64 MHz) DSP for real time processing Link to DAE3 16 nit A/D converter for surface detection system serial link to robot direct emergency stop output for robot.
-----------	---

Test of: Dell Inc.

Dell Inspiron 910 Netbook PC

To: OET Bulletin 65 Supplement C: (2001-01)

---

**DASY4 SAR System Specifications (Continued)****E-Field Probe**

<b>Model:</b>	ES3DV3
<b>Serial No:</b>	3173
<b>Construction:</b>	Triangular core fibre optic detection system
<b>Frequency:</b>	10 MHz to 3 GHz
<b>Linearity:</b>	±0.2 dB (30 MHz to 3 GHz)
<b>Probe Length (mm):</b>	337
<b>Probe Diameter (mm):</b>	12
<b>Tip Length (mm):</b>	10
<b>Tip Diameter (mm):</b>	6.8
<b>Sensor X Offset (mm):</b>	2.7
<b>Sensor Y Offset (mm):</b>	2.7
<b>Sensor Z Offset (mm):</b>	2.7

**Phantom**

<b>Phantom:</b>	OVAL Phantom
<b>Shell Material:</b>	Fibreglass
<b>Thickness:</b>	2.0 ±0.1 mm

---