



**FCC OET BULLETIN 65 SUPPLEMENT C  
CLASS II PERMISSIVE CHANGE  
IC RSS-102 ISSUE 3**

**SAR EVALUATION REPORT**

*For*

**802.11 b/g/n 1x1 PCIe Minicard  
Tested inside of Dell P04T (Display 10")**

**FCC ID: PPD-AR5B95**

**IC: 4104A-AR5B95**

**MODEL: AR5B95**

**REPORT NUMBER: 09U12917-1A**

**ISSUE DATE: November 20, 2009**

*Prepared for*

**ATHEROS COMMUNICATIONS, INC.  
5480 GREAT AMERICA PARKWAY  
SANTA CLARA, CA 95054**

*Prepared by*

**COMPLIANCE CERTIFICATION SERVICES  
47173 BENICIA STREET  
FREMONT, CA 94538, USA**



**NVLAP LAB CODE 200065-0**

Revision History

Rev.	Issue Date	Revisions	Revised By
--	November 11, 2009	Initial Issue	--
A	November 20, 2009	Add Bluetooth collocated Tx info on section 5	S. Shih

## TABLE OF CONTENTS

1. ATTESTATION OF TEST RESULTS.....	4
2. TEST METHODOLOGY .....	5
3. FACILITIES AND ACCREDITATION.....	5
4. CALIBRATION AND UNCERTAINTY.....	6
4.1. MEASURING INSTRUMENT CALIBRATION.....	6
4.2. MEASUREMENT UNCERTAINTY.....	7
5. EQUIPMENT UNDER TEST .....	9
6. SYSTEM SPECIFICATIONS.....	10
7. COMPOSITION OF INGREDIENTS FOR TISSUE SIMULATING LIQUIDS .....	11
8. LIQUID PARAMETERS CHECK.....	12
8.1. LIQUID CHECK RESULTS FOR 2450 MHZ.....	13
9. SYSTEM CHECK .....	14
9.1. SYSTEM CHECK RESULTS FOR D2450V2.....	14
10. OUTPUT POWER VERIFICATION.....	15
11. SUMMARY OF TEST RESULTS.....	15
11.1. SAR TEST RESULT FOR THE 2.4 GHZ BAND .....	15
12. Enhanced Energy Coupling (KDB 447498) .....	15
13. WORST-CASE SAR TEST PLOTS .....	16
14. ATTACHMENTS.....	18
15. TEST SETUP PHOTO .....	19
16. HOST DEVICE PHOTO .....	20

# 1. ATTESTATION OF TEST RESULTS

**COMPANY NAME:** ATHEROS COMMUNICATIONS, INC.  
 5480 GREAT AMERICA PARKWAY  
 SANTA CLARA, CA 95054

**FCC ID:** PPD-AR5B95  
**MODEL:** AR5B95  
**IC:** 4104A-AR5B95  
**MODEL:** AR5B95  
**DEVICE CATEGORY:** Portable  
**EXPOSURE CATEGORY:** General Population/Uncontrolled Exposure  
**DATE TESTED:** November 10, 2009

**THE HIGHEST SAR VALUES:**

FCC / IC Rule Parts	Frequency Range [MHz]	The Highest SAR Values (1g_mW/g)	Limit (mW/g)
15.247 / RSS-102	2400 – 2483.5	0.00772	1.6

**APPLICABLE STANDARDS AND TEST PROCEDURES:**

STANDARD	TEST RESULTS
FCC OET BULLETIN 65 SUPPLEMENT C and the following specific Test Procedure: <ul style="list-style-type: none"> <li>o KDB 248227 SAR measurement procedures for 802.11 a/b/g transmitters</li> <li>o KDB 447498 RF Exposure Requirements and Procedures for mobile and portable devices</li> </ul>	Pass
RSS-102 ISSUE 3	Pass

Compliance Certification Services, Inc. (CCS) tested the above equipment in accordance with the requirements set forth in the above standards. All indications of Pass/Fail in this report are opinions expressed by CCS based on interpretations and/or observations of test results. Measurement Uncertainties were not taken into account and are published for informational purposes only. The test results show that the equipment tested is capable of demonstrating compliance with the requirements as documented in this report.

**Note:** The results documented in this report apply only to the tested sample, under the conditions and modes of operation as described herein. This document may not be altered or revised in any way unless done so by CCS and all revisions are duly noted in the revisions section. Any alteration of this document not carried out by CCS will constitute fraud and shall nullify the document. This report must not be used by the client to claim product certification, approval, or endorsement by NVLAP, NIST, any agency of the Federal Government, or any agency of any government.

Approved & Released For CCS By:

Tested By:




SUNNY SHIH  
 ENGINEERING SUPERVISOR  
 COMPLIANCE CERTIFICATION SERVICES

CHAO YEN LIN  
 EMC ENGINEER  
 COMPLIANCE CERTIFICATION SERVICES

## 2. TEST METHODOLOGY

The tests documented in this report were performed in accordance with FCC OET Bulletin 65 Supplement C, Specific FCC Procedure KDB 248227 SAR Measurement Procedure for 820.11abg Transmitters, 447498\_RF Exposure Requirements and Procedures for mobile and portable devices and IC RSS 102 Issue 3.

## 3. FACILITIES AND ACCREDITATION

The test sites and measurement facilities used to collect data are located at 47173 Benicia Street, Fremont, California, USA.

CCS is accredited by NVLAP, Laboratory Code 200065-0. The full scope of accreditation can be viewed at <http://www.ccsemc.com>.

## 4. CALIBRATION AND UNCERTAINTY

### 4.1. MEASURING INSTRUMENT CALIBRATION

The measuring equipment utilized to perform the tests documented in this report has been calibrated in accordance with the manufacturer's recommendations, and is traceable to recognized national standards.

Robot Remote Control	Stäubli	CS7MB	3403-91535	N/A		
DASY4 Measurement Server	SPEAG	SEUMS001BA	1041	N/A		
Probe Alignment Unit	SPEAG	LB (V2)	261	N/A		
SAM Phantom (SAM1)	SPEAG	QD000P40CA	1185	N/A		
SAM Phantom (SAM2)	SPEAG	QD000P40CA	1050	N/A		
Oval Flat Phantom (ELI 4.0)	SPEAG	QD OVA001 B	1003	N/A		
Electronic Probe kit	HP	85070C	N/A	N/A		
S-Parameter Network Analyzer	Agilent	8753ES-6	MY40001647	11	22	2010
Signal Generator	Agilent	8753ES-6	MY40001647	11	22	2010
E-Field Probe	SPEAG	EX3DV4	3686	3	23	2010
Thermometer	ERTCO	639-1S	1718	5	1	2010
Data Acquisition Electronics	SPEAG	DAE3 V1	500	9	15	2010
System Validation Dipole	SPEAG	D835V2	4d002	4	23	2011
System Validation Dipole	SPEAG	D900V2	108	1	21	2010
System Validation Dipole	SPEAG	D1800V2	294	1	29	2010
System Validation Dipole	SPEAG	D1900V2	5d043	1	29	2010
System Validation Dipole	SPEAG	D2450V2	748	4	14	2010
System Validation Dipole	SPEAG	D5GHzV2	1003	11	21	2009
ESG Vector Signal Generator	Agilent	E4438C	US44271090	9	17	2010
Power Meter	Giga-tronics	8651A	8651404	1	11	2010
Power Sensor	Giga-tronics	80701A	1834588	1	11	2010
Amplifier	Mini-Circuits	ZVE-8G	90606	N/A		
Amplifier	Mini-Circuits	ZHL-42W	D072701-5	N/A		
Simulating Liquid	SPAEG	H2450	N/A	Within 24 hrs of first test		
Simulating Liquid	SPAEG	M2450	N/A	Within 24 hrs of first test		
Simulating Liquid	SPAEG	M5800	N/A	Within 24 hrs of first test		

## 4.2. MEASUREMENT UNCERTAINTY

Measurement uncertainty for 300 MHz – 3000 MHz

Uncertainty component	Tol. (±%)	Probe Dist.	Div.	Ci (1g)	Ci (10g)	Std. Unc.(±%)		
						Ui (1g)	Ui(10g)	
<b>Measurement System</b>								
Probe Calibration	4.80	N	1	1	1	4.80	4.80	
Axial Isotropy	4.70	R	1.732	0.707	0.707	1.92	1.92	
Hemispherical Isotropy	9.60	R	1.732	0.707	0.707	3.92	3.92	
Boundary Effects	1.00	R	1.732	1	1	0.58	0.58	
Linearity	4.70	R	1.732	1	1	2.71	2.71	
System Detection Limits	1.00	R	1.732	1	1	0.58	0.58	
Readout Electronics	1.00	N	1	1	1	1.00	1.00	
Response Time	0.80	R	1.732	1	1	0.46	0.46	
Integration Time	2.60	R	1.732	1	1	1.50	1.50	
RF Ambient Conditions - Noise	1.59	R	1.732	1	1	0.92	0.92	
RF Ambient Conditions - Reflections	0.00	R	1.732	1	1	0.00	0.00	
Probe Positioner Mechanical Tolerance	0.40	R	1.732	1	1	0.23	0.23	
Probe Positioning With Respect to Phantom Shell	2.90	R	1.732	1	1	1.67	1.67	
algorithms for max. SAR evaluation	3.90	R	1.732	1	1	2.25	2.25	
<b>Test sample Related</b>								
Test Sample Positioning	1.10	N	1	1	1	1.10	1.10	
Device Holder Uncertainty	3.60	N	1	1	1	3.60	3.60	
Power and SAR Drift Measurement	5.00	R	1.732	1	1	2.89	2.89	
<b>Phantom and Tissue Parameters</b>								
Phantom Uncertainty	4.00	R	1.732	1	1	2.31	2.31	
Liquid Conductivity - Target	5.00	R	1.732	0.64	0.43	1.85	1.24	
Liquid Conductivity - Meas.	8.60	N	1	0.64	0.43	5.50	3.70	
Liquid Permittivity - Target	5.00	R	1.732	0.6	0.49	1.73	1.41	
Liquid Permittivity - Meas.	3.30	N	1	0.6	0.49	1.98	1.62	
<b>Combined Standard Uncertainty</b>						RSS	11.44	10.49
<b>Expanded Uncertainty (95% Confidence Interval)</b>						K=2	22.87	20.98
Notes for table								
1. Tol. - tolerance in influence quantity								
2. N - Nomal								
3. R - Rectangular								
4. Div. - Divisor used to obtain standard uncertainty								
5. Ci - is te sensitivity coefficient								

Measurement uncertainty for 3 GHz – 6 GHz

Uncertainty component	Tol. (±%)	Probe Dist.	Div.	Ci (1g)	Ci (10g)	Std. Unc.(±%)	
						Ui (1g)	Ui(10g)
<b>Measurement System</b>							
Probe Calibration	4.80	N	1	1	1	4.80	4.80
Axial Isotropy	4.70	R	1.732	0.707	0.707	1.92	1.92
Hemispherical Isotropy	9.60	R	1.732	0.707	0.707	3.92	3.92
Boundary Effects	1.00	R	1.732	1	1	0.58	0.58
Linearity	4.70	R	1.732	1	1	2.71	2.71
System Detection Limits	1.00	R	1.732	1	1	0.58	0.58
Readout Electronics	1.00	N	1	1	1	1.00	1.00
Response Time	0.80	R	1.732	1	1	0.46	0.46
Integration Time	2.60	R	1.732	1	1	1.50	1.50
RF Ambient Conditions - Noise	3.00	R	1.732	1	1	1.73	1.73
RF Ambient Conditions - Reflections	3.00	R	1.732	1	1	1.73	1.73
Probe Positioner Mechanical Tolerance	0.40	R	1.732	1	1	0.23	0.23
Probe Positioning With Respect to Phantom Shell	2.90	R	1.732	1	1	1.67	1.67
Extrapolation, interpolation, and integration algorithms for max. SAR evaluation	3.90	R	1.732	1	1	2.25	2.25
<b>Test sample Related</b>							
Test Sample Positioning	1.10	N	1	1	1	1.10	1.10
Device Holder Uncertainty	3.60	N	1	1	1	3.60	3.60
Power and SAR Drift Measurement	5.00	R	1.732	1	1	2.89	2.89
<b>Phantom and Tissue Parameters</b>							
Phantom Uncertainty	4.00	R	1.732	1	1	2.31	2.31
Liquid Conductivity - Target	5.00	R	1.732	0.64	0.43	1.85	1.24
Liquid Conductivity - Meas.	8.60	N	1	0.64	0.43	5.50	3.70
Liquid Permittivity - Target	5.00	R	1.732	0.6	0.49	1.73	1.41
Liquid Permittivity - Meas.	3.30	N	1	0.6	0.49	1.98	1.62
<b>Combined Standard Uncertainty</b>	RSS					11.66	10.73
<b>Expanded Uncertainty (95% Confidence Interval)</b>	K=2					23.32	21.46
Notes for table							
1. Tol. - tolerance in influence quantity							
2. N - Nominal							
3. R - Rectangular							
4. Div. - Divisor used to obtain standard uncertainty							
5. Ci - is the sensitivity coefficient							



## 5. EQUIPMENT UNDER TEST

802.11 b/g/n 1x1 PCIe Minicard, tested inside of Dell P04T (Display 10")

**Normal operation:**

Lap-held only

Note: SAR test with display open at 90° to the keyboard

**Antenna tested:**

<u>Vendor (dBi)</u>	<u>Antenna</u>	<u>Part Number</u>	<u>Peak Gain</u>
Smart Approach	Main	SE-024A0-ECM10	1.84

Note: Aux antenna is for Rx only

**Antenna-to-antenna distance:**

Bluetooth to WLAN main antenna: > 20 cm

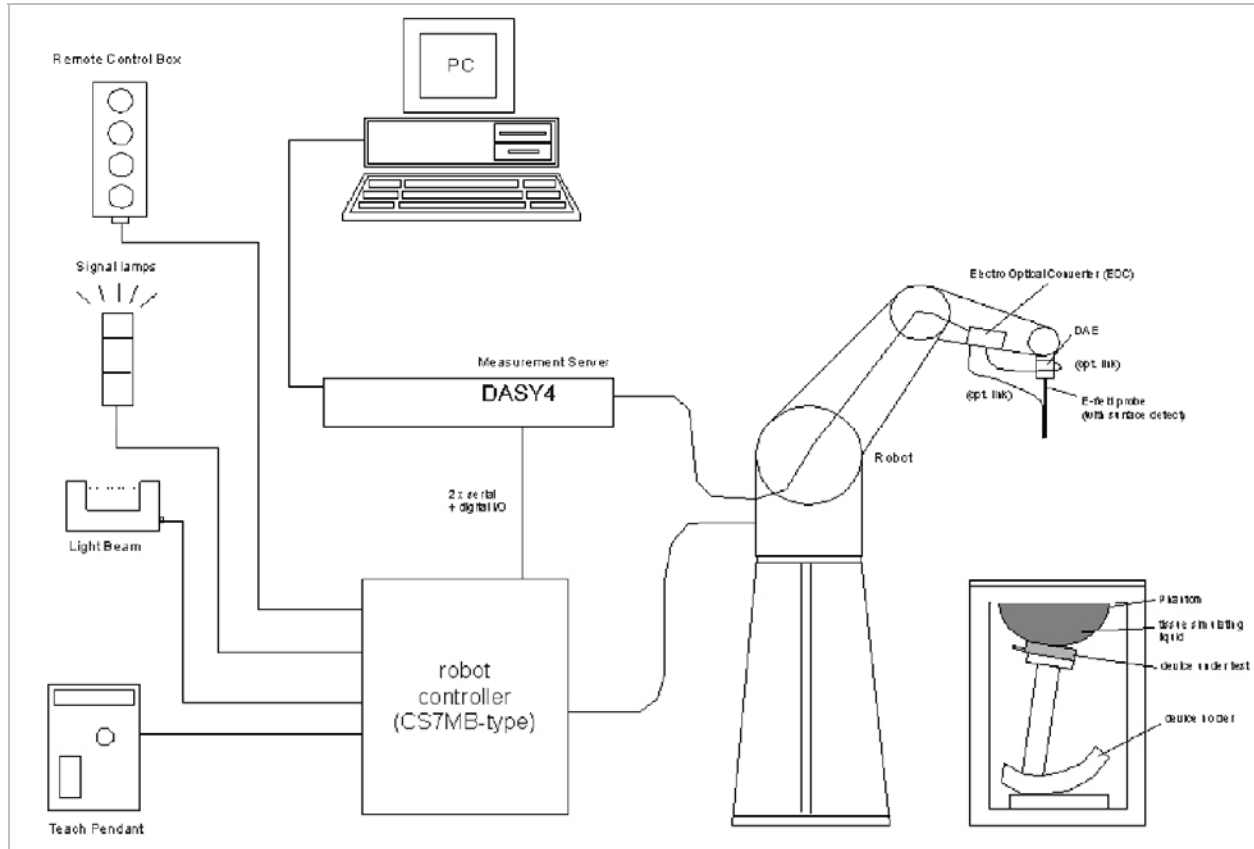
**Simultaneous Tx;**

Bluetooth's output power is  $\leq 60/f(\text{GHz})$  mW and measured WLAN 1-g SAR are < 0.4 W/kg, therefore simultaneous transmission SAR is not required.

**Power supply:**

Power supplied through laptop computer (host device)

## 6. SYSTEM SPECIFICATIONS



### The DASY4 system for performing compliance tests consists of the following items:

- A standard high precision 6-axis robot (Stäubli RX family) with controller, teach pendant and software. An arm extension for accommodating the data acquisition electronics (DAE).
- A dosimetric probe, i.e., an isotropic E-field probe optimized and calibrated for usage in tissue simulating liquid. The probe is equipped with an optical surface detector system.
- A data acquisition electronics (DAE) which performs the signal amplification, signal multiplexing, AD-conversion, offset measurements, mechanical surface detection, collision detection, etc. The unit is battery powered with standard or rechargeable batteries. The signal is optically transmitted to the EOC.
- The function of the measurement server is to perform the time critical tasks such as signal filtering, control of the robot operation and fast movement interrupts.
- A probe alignment unit which improves the (absolute) accuracy of the probe positioning.
- A computer operating Windows 2000 or Windows XP.
- DASY4 software.
- Remote controls with teach pendant and additional circuitry for robot safety such as warning lamps, etc.
- The SAM twin phantom enabling testing left-hand and right-hand usage.
- The device holder for handheld mobile phones.
- Tissue simulating liquid mixed according to the given recipes.
- Validation dipole kits allowing to validate the proper functioning of the system.

## 7. COMPOSITION OF INGREDIENTS FOR TISSUE SIMULATING LIQUIDS

The following tissue formulations are provided for reference only as some of the parameters have not been thoroughly verified. The composition of ingredients may be modified accordingly to achieve the desired target tissue parameters required for routine SAR evaluation.

Ingredients (% by weight)	Frequency (MHz)									
	450		835		915		1900		2450	
Tissue Type	Head	Body	Head	Body	Head	Body	Head	Body	Head	Body
Water	38.56	51.16	41.45	52.4	41.05	56.0	54.9	40.4	62.7	73.2
Salt (NaCl)	3.95	1.49	1.45	1.4	1.35	0.76	0.18	0.5	0.5	0.04
Sugar	56.32	46.78	56.0	45.0	56.5	41.76	0.0	58.0	0.0	0.0
HEC	0.98	0.52	1.0	1.0	1.0	1.21	0.0	1.0	0.0	0.0
Bactericide	0.19	0.05	0.1	0.1	0.1	0.27	0.0	0.1	0.0	0.0
Triton X-100	0.0	0.0	0.0	0.0	0.0	0.0	0.0	0.0	36.8	0.0
DGBE	0.0	0.0	0.0	0.0	0.0	0.0	44.92	0.0	0.0	26.7
Dielectric Constant	43.42	58.0	42.54	56.1	42.0	56.8	39.9	54.0	39.8	52.5
Conductivity (S/m)	0.85	0.83	0.91	0.95	1.0	1.07	1.42	1.45	1.88	1.78

Salt: 99+% Pure Sodium Chloride      Sugar: 98+% Pure Sucrose  
 Water: De-ionized, 16 MΩ+ resistivity      HEC: Hydroxyethyl Cellulose  
 DGBE: 99+% Di(ethylene glycol) butyl ether, [2-(2-butoxyethoxy)ethanol]  
 Triton X-100 (ultra pure): Polyethylene glycol mono [4-(1,1, 3, 3-tetramethylbutyl)phenyl]ether

## 8. LIQUID PARAMETERS CHECK

The simulating liquids should be checked at the beginning of a series of SAR measurements to determine if the dielectric parameters are within the tolerances of the specified target values. The relative permittivity and conductivity of the tissue material should be within  $\pm 5\%$  of the values given in the table below.

### Reference Values of Tissue Dielectric Parameters for Head and Body Phantom (for 150 – 3000 MHz and 5800 MHz)

The head tissue dielectric parameters recommended by the IEEE SCC-34/SC-2 in IEEE Standard 1528 have been incorporated in the following table. These head parameters are derived from planar layer models simulating the highest expected SAR for the dielectric properties and tissue thickness variations in a human head. Other head and body tissue parameters that have not been specified in P1528 are derived from the tissue dielectric parameters computed from the 4-Cole-Cole equations and extrapolated according to the head parameters specified in IEEE Standard 1528.

Target Frequency (MHz)	Head		Body	
	$\epsilon_r$	$\sigma$ (S/m)	$\epsilon_r$	$\sigma$ (S/m)
150	52.3	0.76	61.9	0.8
300	45.3	0.87	58.2	0.92
450	43.5	0.87	56.7	0.94
835	41.5	0.9	55.2	0.97
900	41.5	0.97	55	1.05
915	41.5	0.98	55	1.06
1450	40.5	1.2	54	1.3
1610	40.3	1.29	53.8	1.4
1800 – 2000	40	1.4	53.3	1.52
2450	39.2	1.8	52.7	1.95
3000	38.5	2.4	52	2.73
5800	35.3	5.27	48.2	6

( $\epsilon_r$  = relative permittivity,  $\sigma$  = conductivity and  $\rho = 1000 \text{ kg/m}^3$ )

### 8.1. LIQUID CHECK RESULTS FOR 2450 MHZ

Simulating Liquid Dielectric Parameters for Muscle 2450 MHz

Room Ambient Temperature = 24°C; Relative humidity = 40%

Measured by: Chao Lin

f (MHz)	Liquid Parameters			Measured	Target	Delta (%)	Limit (%)
2450	e'	51.53	Relative Permittivity ( $\epsilon_r$ ):	51.527	52.7	-2.23	± 5
	e''	13.92	Conductivity ( $\sigma$ ):	1.898	1.95	-2.68	± 5

Liquid Temperature: 23 deg. C

November 10, 2009 11:52 AM

Frequency	e'	e''
2400000000	51.6235	13.6757
2405000000	51.6114	13.7491
2410000000	51.5968	13.8143
2415000000	51.5932	13.8578
2420000000	51.5793	13.884
2425000000	51.5747	13.9022
2430000000	51.5804	13.8955
2435000000	51.5646	13.9016
2440000000	51.5602	13.9161
2445000000	51.5312	13.9438
<b>2450000000</b>	<b>51.5273</b>	<b>13.9229</b>
2455000000	51.4583	13.8995
2460000000	51.4222	13.8714
2465000000	51.3584	13.8342
2470000000	51.343	13.7866
2475000000	51.3279	13.7624
2480000000	51.3357	13.7695
2485000000	51.3289	13.7886
2490000000	51.3313	13.8459
2495000000	51.3332	13.9197
2500000000	51.3283	14.0226

The conductivity ( $\sigma$ ) can be given as:

$$\sigma = \omega \epsilon_0 e'' = 2 \pi f \epsilon_0 e''$$

where  $f = \text{target } f * 10^6$

$$\epsilon_0 = 8.854 * 10^{-12}$$

## 9. SYSTEM CHECK

The system performance check is performed prior to any usage of the system in order to guarantee reproducible results. The system performance check verifies that the system operates within its specifications of  $\pm 10\%$ .

### System Performance Check Measurement Conditions

- The measurements were performed in the flat section of the SAM twin phantom filled with Head or Body simulating liquid of the following parameters.
- The DASY4 system with an Isotropic E-Field Probe EX3DV4 was used for the measurements.
- The dipole was mounted on the small tripod so that the dipole feed point was positioned below the center marking of the flat phantom section and the dipole was oriented parallel to the body axis (the long side of the phantom). The standard measuring distance was 10 mm (above 1 GHz) and 15 mm (below 1 GHz) from dipole center to the simulating liquid surface.
- The coarse grid with a grid spacing of 15 mm was aligned with the dipole.  
 For 5 GHz band - The coarse grid with a grid spacing of 10 mm was aligned with the dipole.
- Special 7x7x7 fine cube was chosen for cube
- Distance between probe sensors and phantom surface was set to 3 mm.  
 For 5 GHz band - Distance between probe sensors and phantom surface was set to 2.5 mm
- The dipole input power (forward power) was 250 mW $\pm 3\%$ .
- The results are normalized to 1 W input power.

450 to 2450 MHz Reference SAR Values for Body-tissue (From SPEAG)

Dipole Type	Distance	Frequency	SAR (1g)	SAR (10g)	SAR (peak)
	(mm)	(MHz)	[W/kg]	[W/kg]	[W/kg]
D450V2	15	450	5.01	3.36	7.22
D835V2	15	835	9.71	6.38	14.1
D900V2	15	900	11.1	7.17	16.3
D1450V2	10	1450	29.6	16.6	49.8
D1800V2	10	1800	38.5	20.3	67.5
D1900V2	10	1900	39.8	20.8	69.6
D2000V2	10	2000	40.9	21.2	71.5
D2450V2	10	2450	51.2	23.7	97.6

### 9.1. SYSTEM CHECK RESULTS FOR D2450V2

System Validation Dipole: D2450V2 SN: 748

Date: November 10, 2009

Ambient Temperature = 24°C; Relative humidity = 40%

Measured by: Chaoyen Lin

Medium	CW Signal (MHz)	Forward power (mW)	Measured (Normalized to 1 W)		Target	Delta (%)	Tolerance (%)
Body	2450	250	1g SAR:	53.6	51.2	4.69	$\pm 10$
			10g SAR:	25.2	23.7	6.33	

## 10. OUTPUT POWER VERIFICATION

The following procedures had been used to prepare the EUT for the SAR test.

The client provided a special driver and program, ART v9B7, which enable a user to control the frequency and output power of the module.

The modes with highest output power channel were chosen for the conducted output power measurement.

### Results:

802.11bgn mode (2.4 GHz band)

Mode	Channel	f (MHz)	Antenna	Average Output	Duty Cycle (%)
802.11b	6	2437 (M)	Main	18.25	100
802.11n 20 MHz	6	2437 (M)	Main	17.50	99

## 11. SUMMARY OF TEST RESULTS

### 11.1. SAR TEST RESULT FOR THE 2.4 GHZ BAND

Mode	Channel	f (MHz)	Antenna	Measured SAR 1g (mW/g)	Measured SAR 1g (mW/g)
802.11b	6	2437	Main	0.00772	0.00480
802.11n 20 MHz	6	2437	Main	0.00552	0.00203

## 12. Enhanced Energy Coupling (KDB 447498)

According to KDB 447498, the test configuration with the highest 1-g SAR must be used to determine if additional SAR evaluation is required due to enhanced energy coupling at increased separation distances.

From the test results below, additional 1-g SAR evaluation is not required.

Band	Antenna-to-person distance (cm)		Peak SAR (mW/g)	E-field (V/m)	Lower than Initial (%)
2.4 GHz	Initial	16.38	0.016	1.68	
	1	16.88	0.012	1.47	77.0%
	2	17.38	0.007	1.13	45.5%

### 13. WORST-CASE SAR TEST PLOTS

#### 802.11b SAR PLOT for 2.4 GHz Band

Date/Time: 11/10/2009 3:29:32 PM

Test Laboratory: Compliance Certification Services

#### 802.11bgn for Lapheld

DUT: DELL; Type: NA; Serial: NA

Communication System: 802.11bgn; Frequency: 2437 MHz; Duty Cycle: 1:1  
Medium parameters used (interpolated):  $f = 2437$  MHz;  $\sigma = 1.89$  mho/m;  $\epsilon_r = 51.6$ ;  $\rho = 1000$  kg/m<sup>3</sup>  
Phantom section: Flat Section

Room Ambient Temperature: 24.0 deg. C; Liquid Temperature: 23.0 deg. C

DASY4 Configuration:

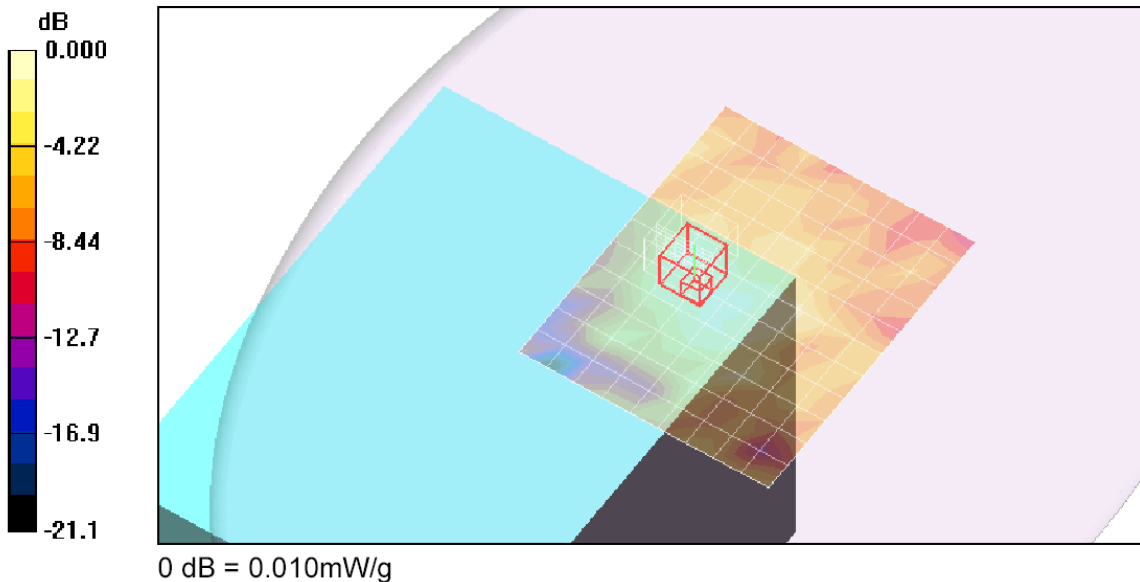
- Area Scan setting - Find Secondary Maximum Within: 2.0 dB and with a peak SAR value greater than 0.0012W/kg
- Probe: EX3DV4 - SN3686; ConvF(6.48, 6.48, 6.48); Calibrated: 3/23/2009
- Sensor-Surface: 3mm (Mechanical Surface Detection)
- Electronics: DAE3 Sn500; Calibrated: 9/15/2009
- Phantom: Flat Phantom ELI4.0; Type: QDOVA001BA; Serial: SN:1003
- Measurement SW: DASY4, V4.7 Build 80; Postprocessing SW: SEMCAD, V1.8 Build 186

#### Laptop, 802.11b M-ch/Area Scan (10x12x1): Measurement grid: dx=15mm, dy=15mm

Maximum value of SAR (measured) = 0.010 mW/g

#### Laptop, 802.11b M-ch/Zoom Scan (7x7x9)/Cube 0: Measurement grid: dx=5mm, dy=5mm, dz=3mm

Reference Value = 1.87 V/m; Power Drift = 0.036 dB  
Peak SAR (extrapolated) = 0.016 W/kg  
SAR(1 g) = 0.00772 mW/g; SAR(10 g) = 0.0048 mW/g





**802.11n 20MHz SAR PLOT for 2.4 GHz Band**

Date/Time: 11/10/2009 4:09:29 PM

Test Laboratory: Compliance Certification Services

**802.11bgn for Lapheld**

DUT: DELL; Type: NA; Serial: NA

Communication System: 802.11bgn; Frequency: 2437 MHz; Duty Cycle: 1:1  
Medium parameters used (interpolated):  $f = 2437$  MHz;  $\sigma = 1.89$  mho/m;  $\epsilon_r = 51.6$ ;  $\rho = 1000$  kg/m<sup>3</sup>  
Phantom section: Flat Section

Room Ambient Temperature: 24.0 deg. C; Liquid Temperature: 23.0 deg. C

DASY4 Configuration:

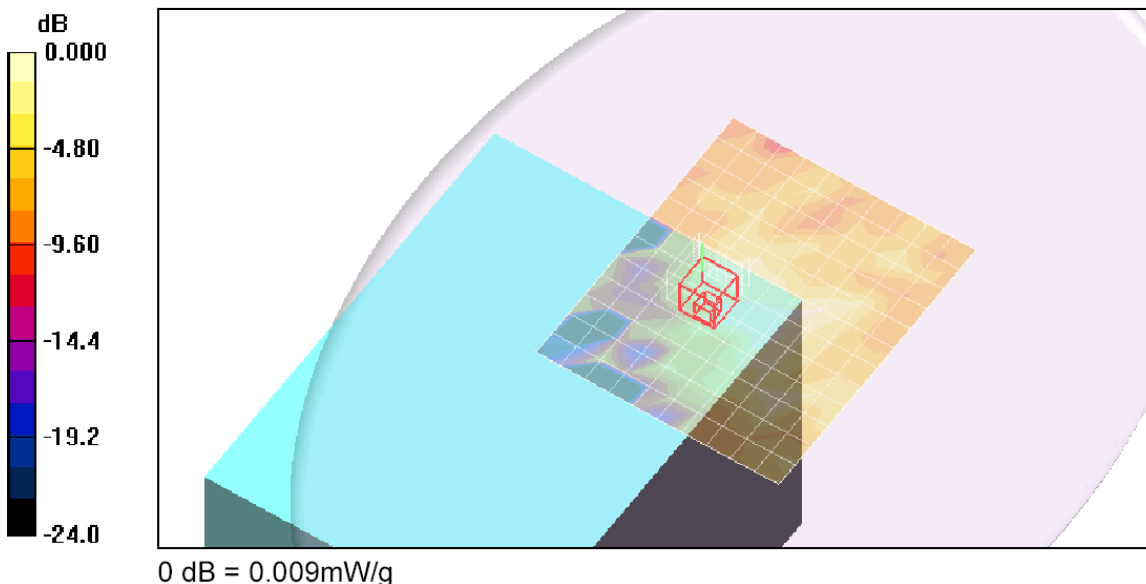
- Area Scan setting - Find Secondary Maximum Within: 2.0 dB and with a peak SAR value greater than 0.0012W/kg
- Probe: EX3DV4 - SN3686; ConvF(6.48, 6.48, 6.48); Calibrated: 3/23/2009
- Sensor-Surface: 3mm (Mechanical Surface Detection)
- Electronics: DAE3 Sn500; Calibrated: 9/15/2009
- Phantom: Flat Phantom ELI4.0; Type: QDOVA001BA; Serial: SN:1003
- Measurement SW: DASY4, V4.7 Build 80; Postprocessing SW: SEMCAD, V1.8 Build 186

**Laptop, 802.11n 20MHz M-ch/Area Scan (11x13x1):** Measurement grid: dx=15mm, dy=15mm

Maximum value of SAR (measured) = 0.009 mW/g

**Laptop, 802.11n 20MHz M-ch/Zoom Scan (7x7x9)/Cube 0:** Measurement grid: dx=5mm, dy=5mm, dz=3mm

Reference Value = 1.88 V/m; Power Drift = -0.213 dB  
Peak SAR (extrapolated) = 0.022 W/kg  
SAR(1 g) = 0.00552 mW/g; SAR(10 g) = 0.00203 mW/g



## 14. ATTACHMENTS

No.	Contents	No. of page (s)
1	System Performance Check Plots	2
2	Certificate of E-Field Probe – EX3DV4 SN 3686	10
3	Certificate of System Validation Dipole - D2450V2 SN:748	6