

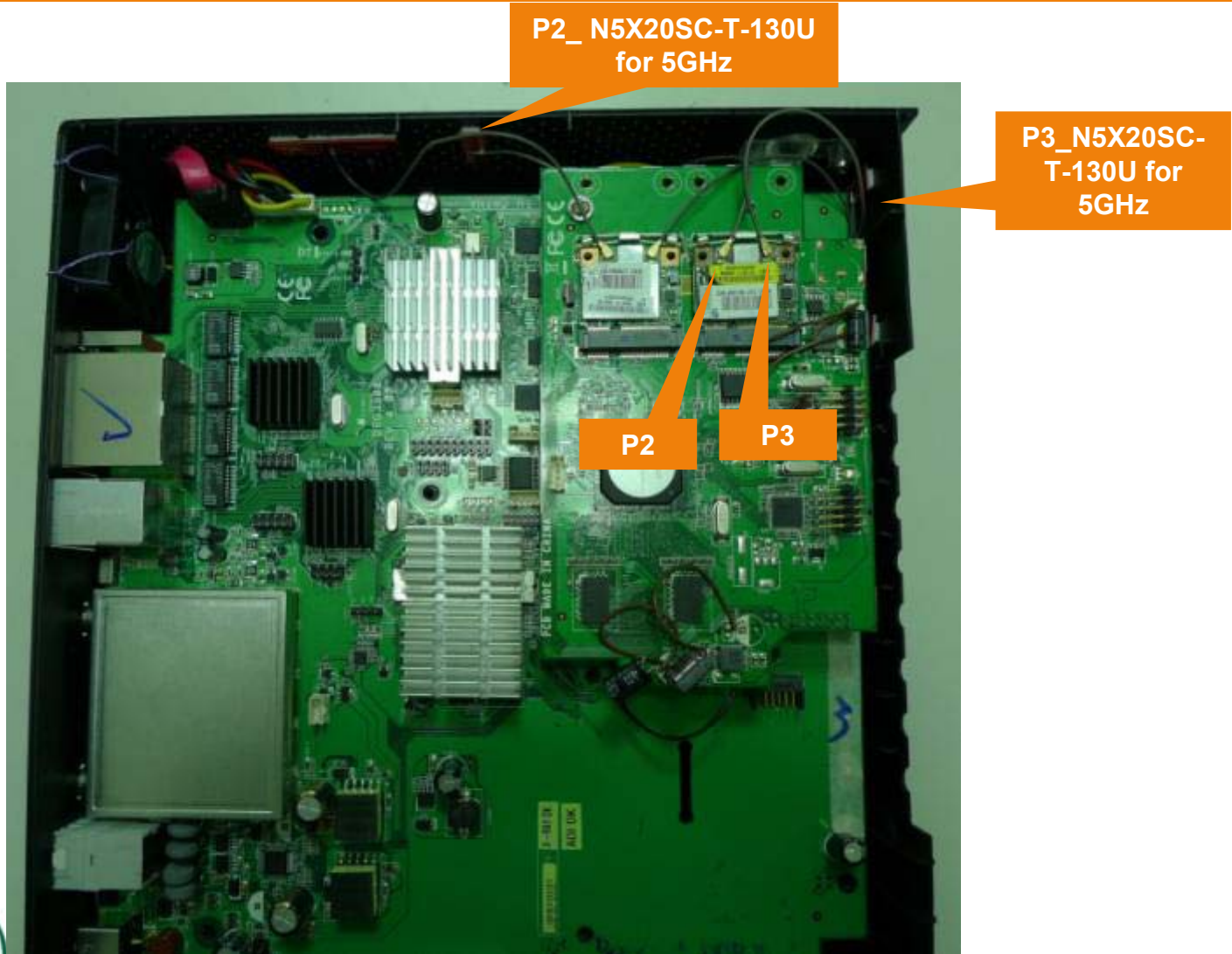
Airgain™



UNIHAN DRG7908 Antenna solution
Report(N5X20SC-T-130U)

July 22, 2011

Antenna Installation method



N5X20SC

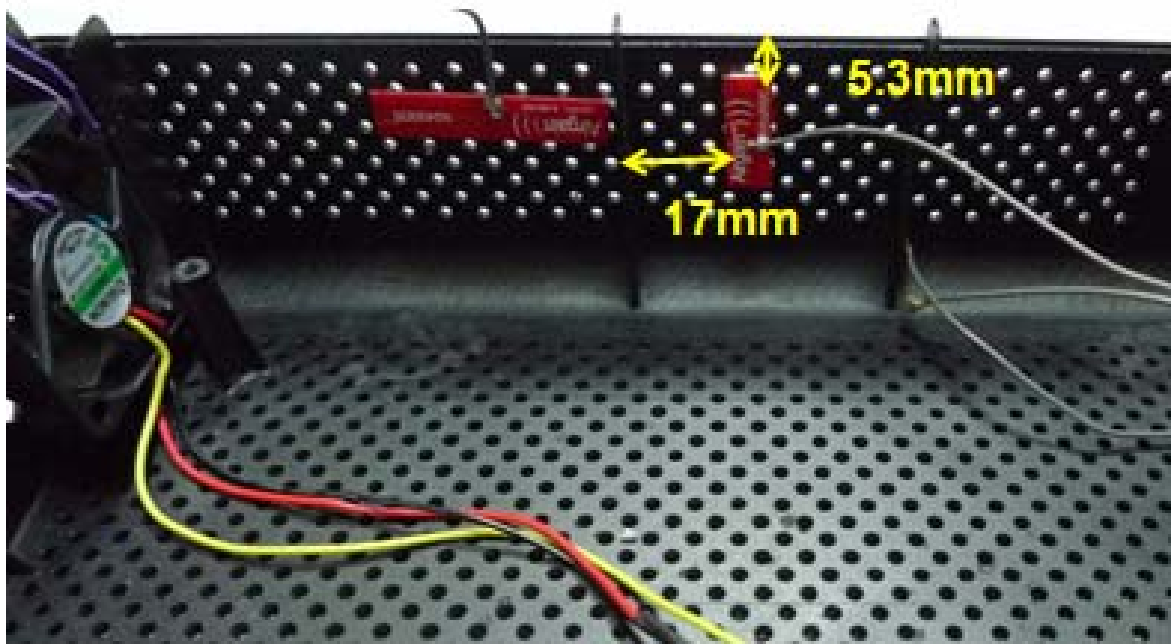
■ Features

- Single-Band
- Single feed, low profile design
- Superior performance in both vertical and horizontal orientations
- Simple case mount accommodates easy integration in existing form factors



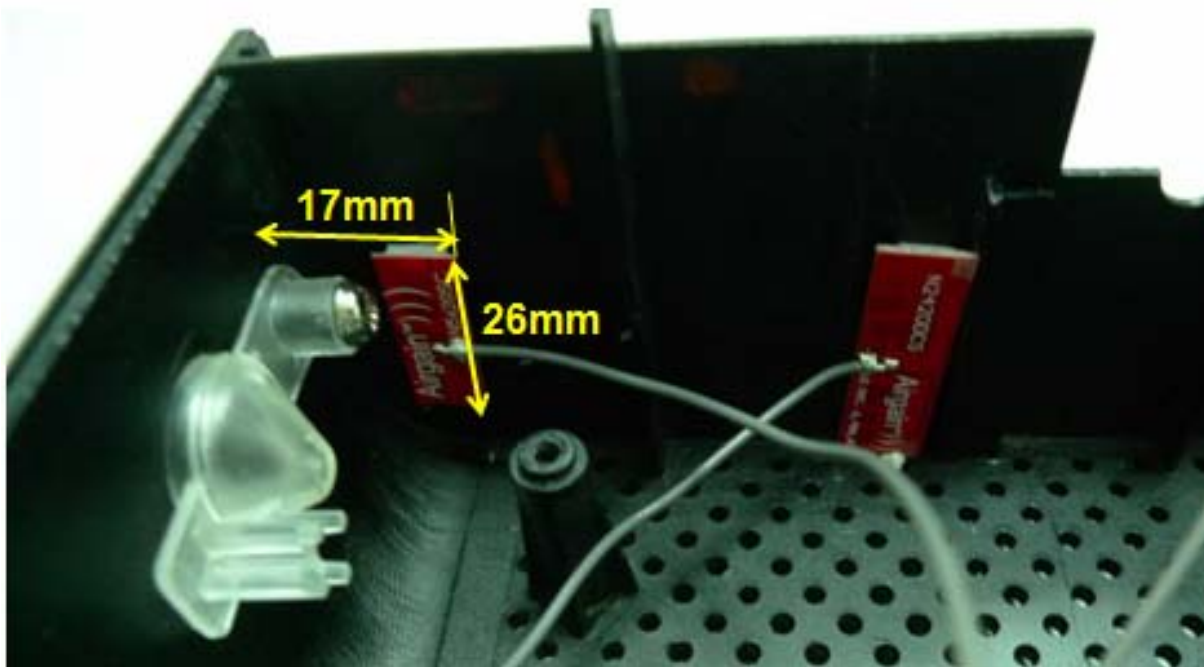
Standard	IEEE 802.11n and 802.11a
Frequency Range	4.9 to 5.9 GHz
Peak Gain	2.4GHz→-6.57dBi ; 5GHz→5.12dBi ; (With DRG7908)
VSWR	2:1
Feed Impedance	50 Ohms
Power Handling	30 dBm
Interface	50 ohm, 1.13mm diameter, micro coax cable, U.FL Compatible Plug
Antenna Dimensions (LxWxH)	21x8x0.5(mm)
Antenna type	PCB type

Antenna location (P2)



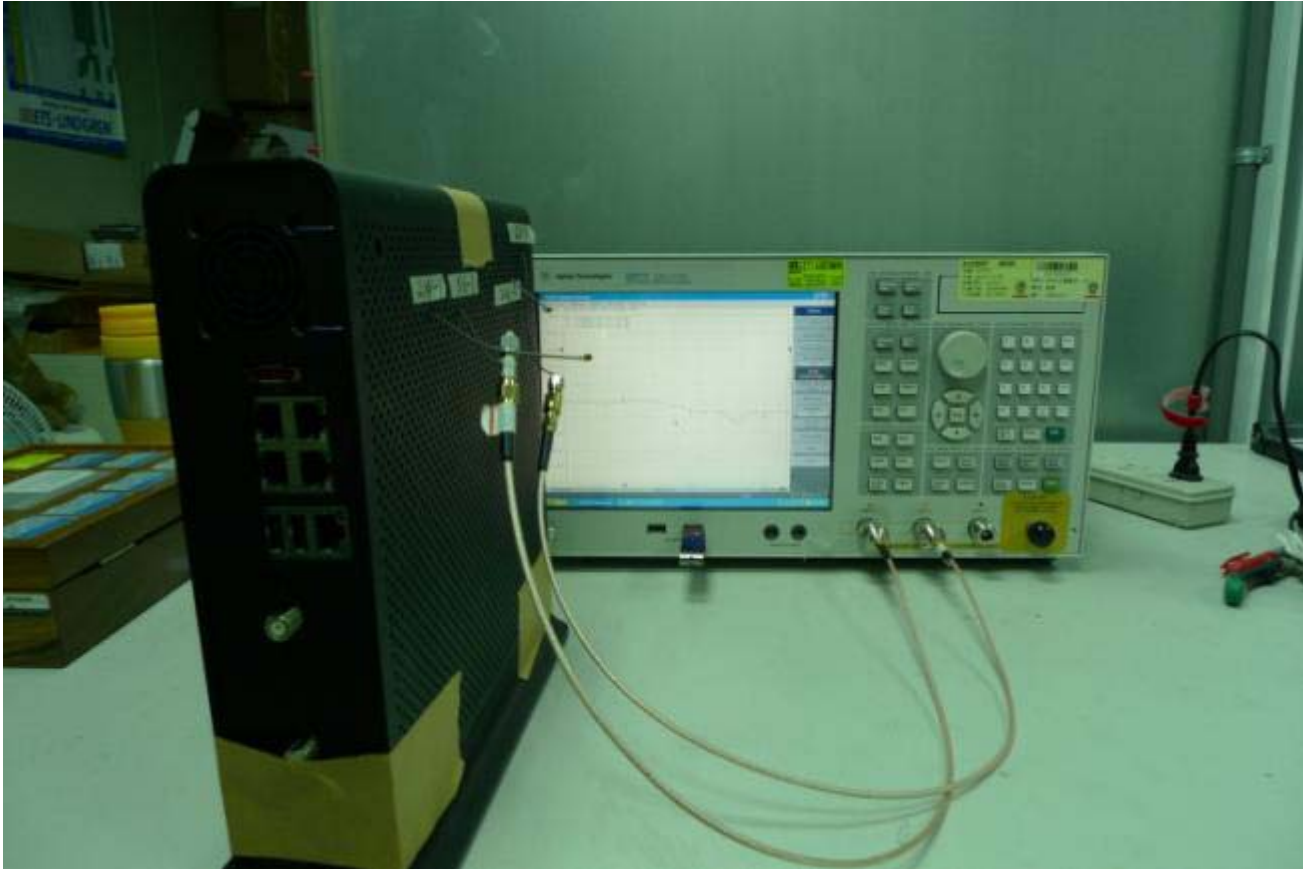
Antenna location (P3)

5



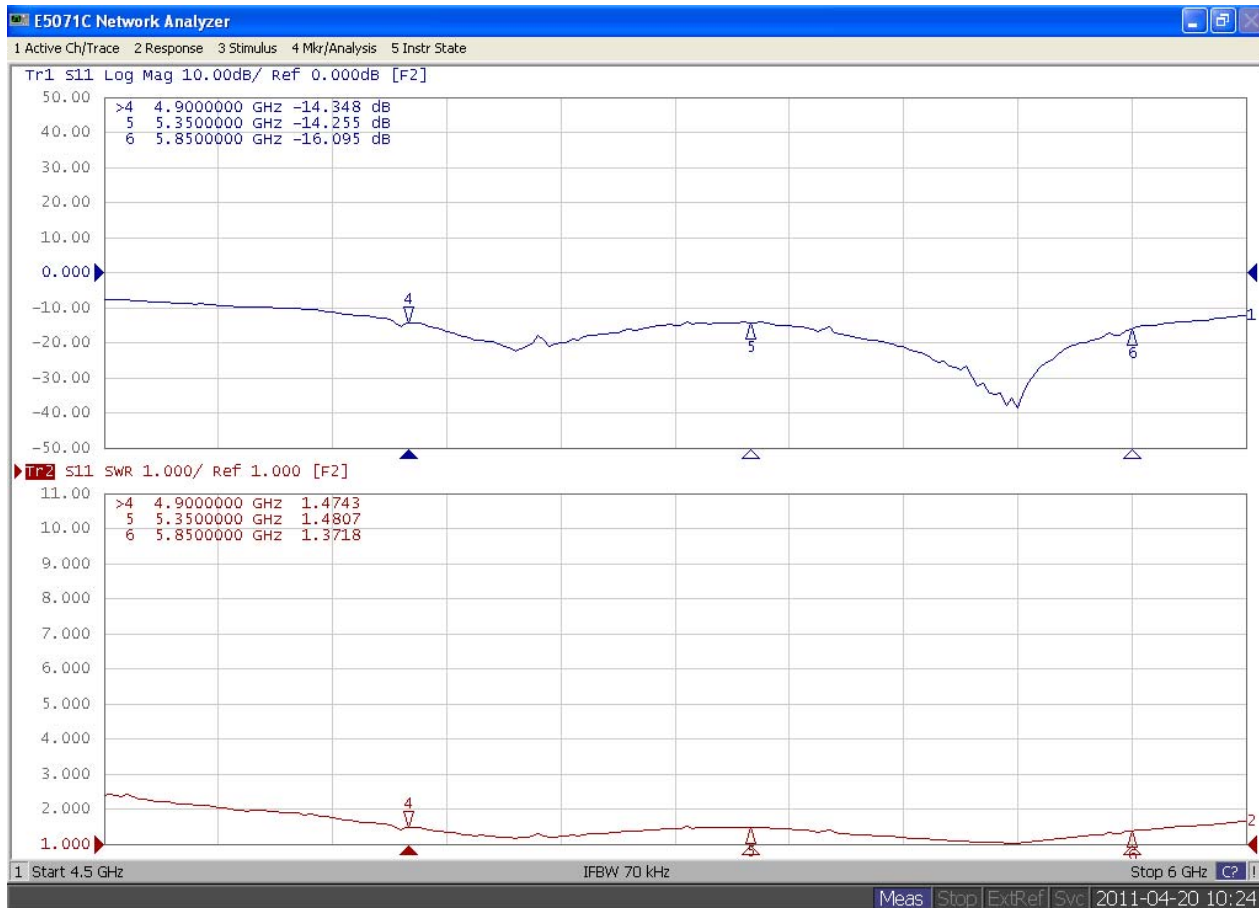
S-parameter

- Measurement Method



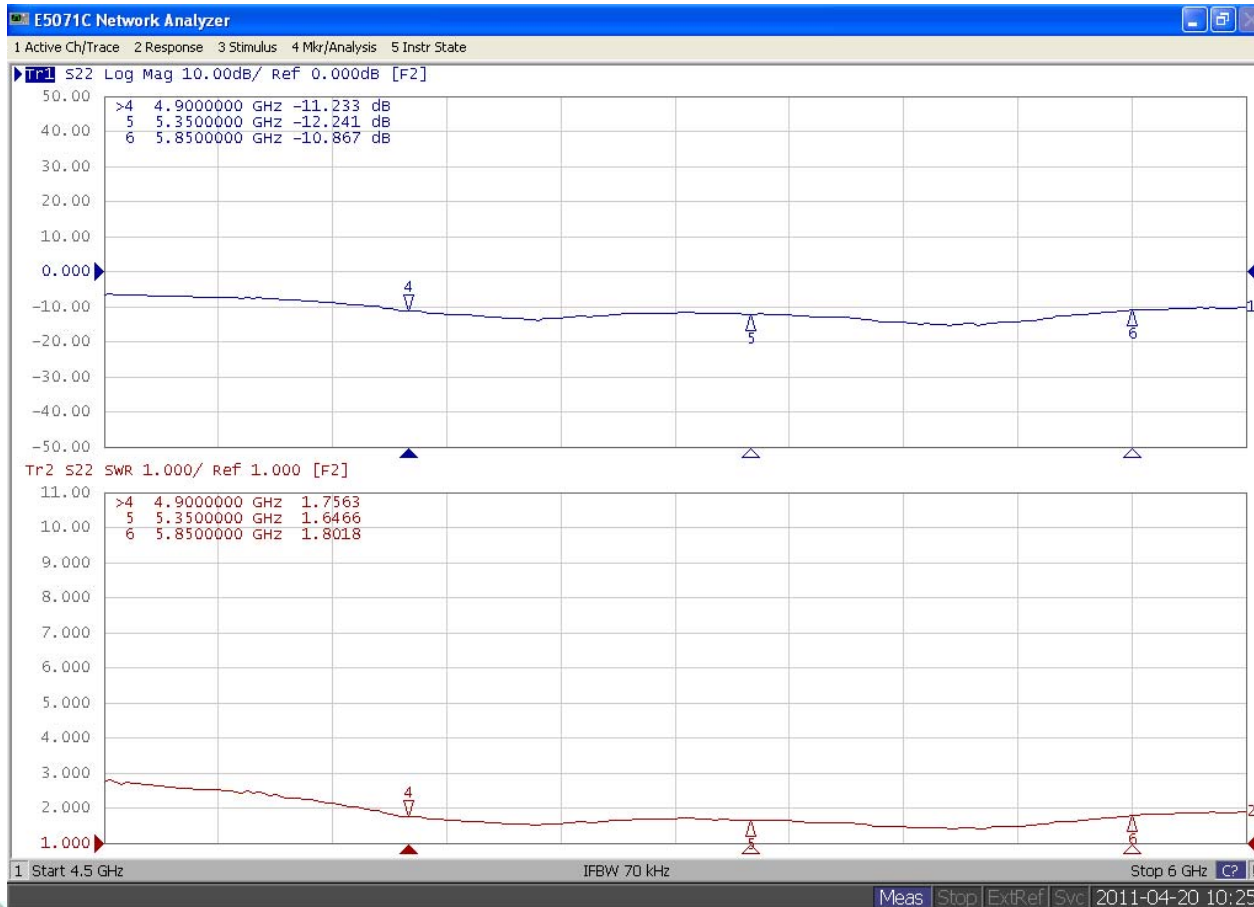
S-parameter

■ P2_ N5X20SC-T-130U for 5GHz



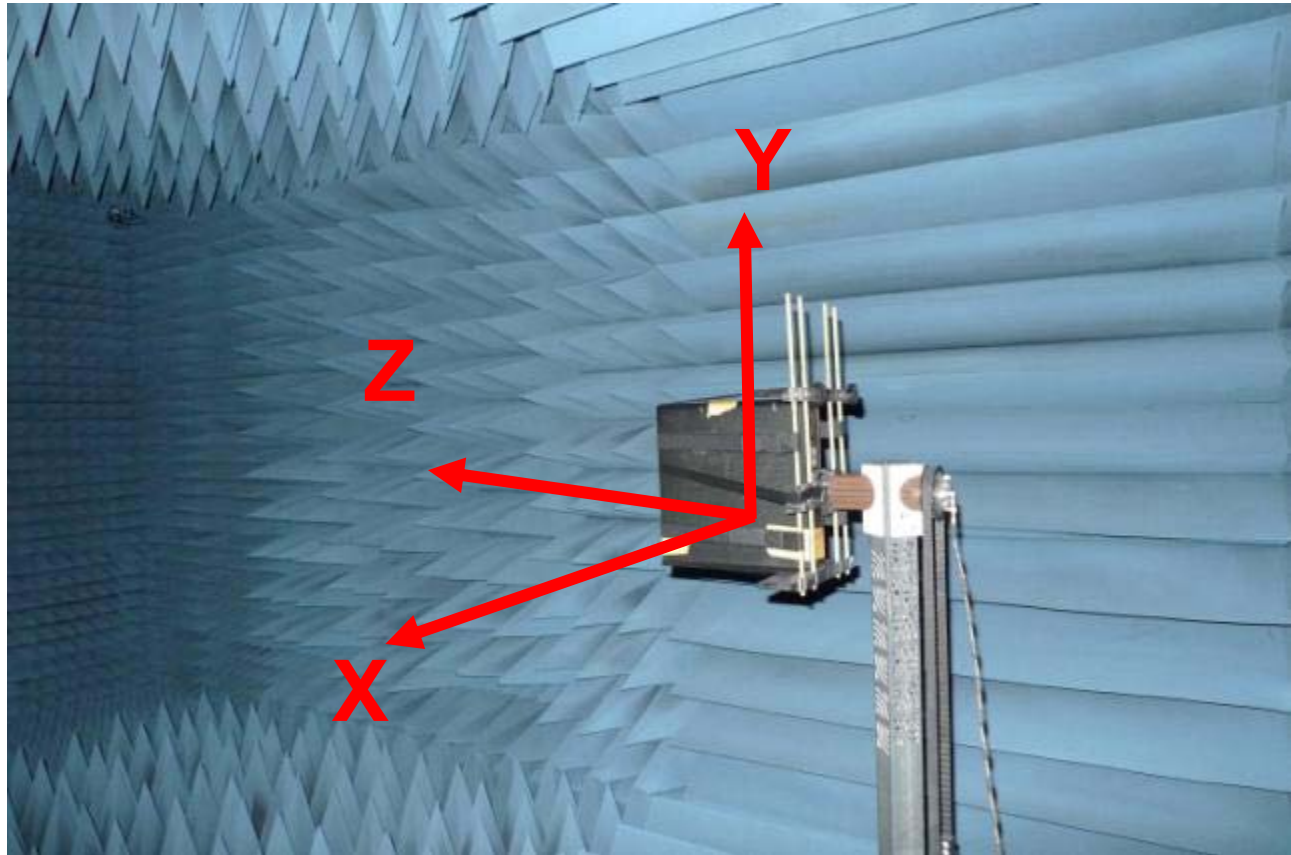
S-parameter

■ P3_ N5X20SC-T-130U for 5GHz



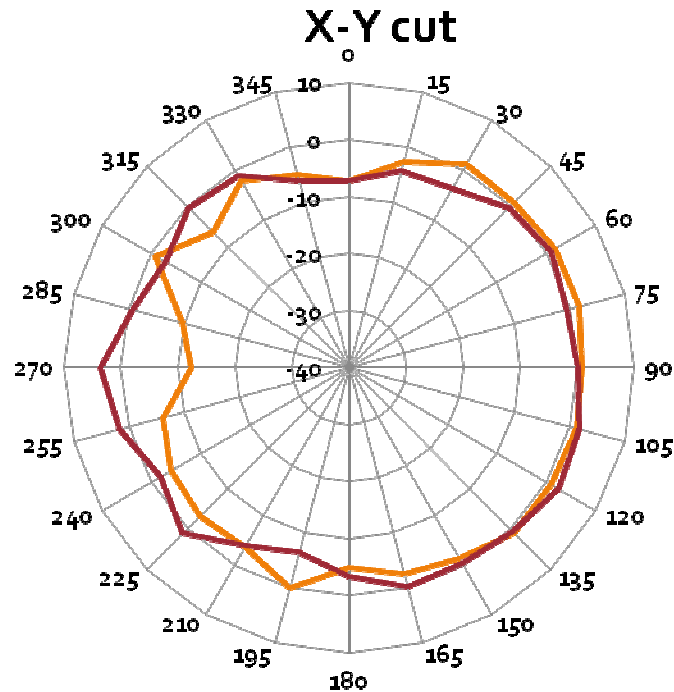
Radiation pattern

- Chamber Orientation



Radiation pattern

■ 5.5GHZ (X-Y cut)



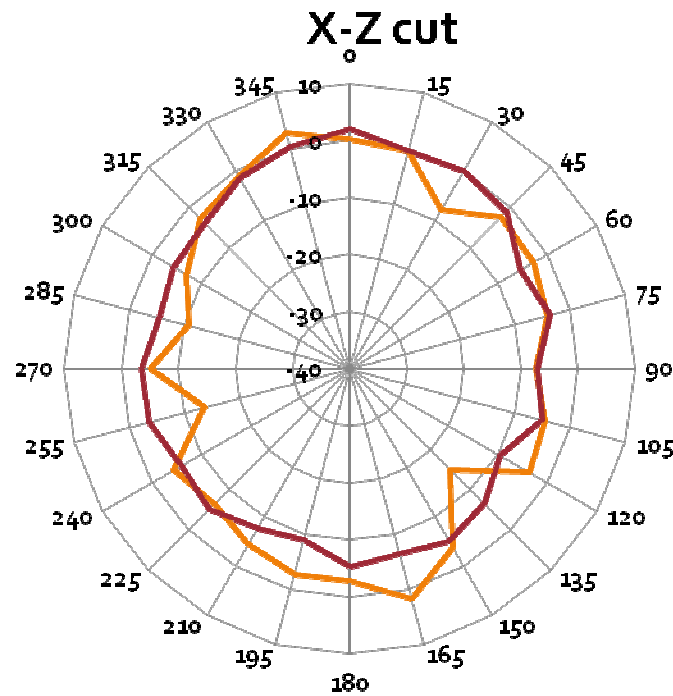
— P2_ N2401D-T-130U for 5GHz

— P3_ N2401D-T-100U for 5GHz

Radiation pattern

1

■ 5.5GHZ (X-Z cut)



— P2_ N2401D-T-130U for 5GHz

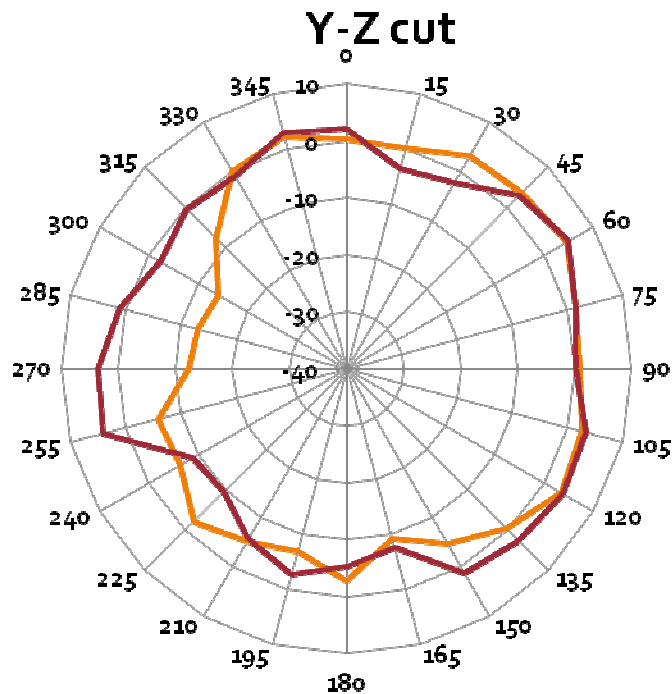
— P3_ N2401D-T-100U for 5GHz



Radiation pattern

2

■ 5.5GHZ (Y-Z cut)



— P2_N2401D-T-130U for 5GHz

— P3_N2401D-T-100U for 5GHz



P2&P3 Peak Gain & Efficiency

3

	P2		P3	
	Peak Gain (dBi)	Efficiency (%)	Peak Gain (dBi)	Efficiency (%)
2.412GHz	-7.85	16.39	-7.06	1.60
2.417GHz	-7.82	16.49	-6.97	1.48
2.422GHz	-7.90	16.19	-7.08	1.35
2.427GHz	-7.96	15.98	-7.05	1.25
2.432GHz	-8.06	15.60	-7.18	1.14
2.437GHz	-8.12	15.39	-7.26	1.05
2.442GHz	-8.06	15.62	-7.20	0.99
2.447GHz	-7.94	16.03	-7.09	0.96
2.452GHz	-7.84	16.41	-7.05	0.94
2.457GHz	-7.69	17.01	-6.88	0.93
2.462GHz	-7.51	17.72	-6.80	0.93
2.467GHz	-7.38	18.25	-6.67	0.92
2.472GHz	-7.31	18.54	-6.57	0.89



P2&P3 Peak Gain & Efficiency

4

	P2		P3	
	Peak Gain (dBi)	Efficiency (%)	Peak Gain (dBi)	Efficiency (%)
5.180GHz	4.92	75.59	5.04	77.21
5.200GHz	4.87	72.79	4.83	74.76
5.250GHz	4.79	74.36	4.62	73.10
5.300GHz	4.10	71.70	4.23	68.50
5.350GHz	4.61	77.43	4.41	77.94
5.400GHz	4.71	75.75	4.67	77.33
5.450GHz	4.98	71.58	4.58	73.09
5.500GHz	4.64	69.01	4.91	70.90
5.550GHz	4.45	70.54	5.08	75.72
5.600GHz	4.65	69.36	4.96	75.73
5.650GHz	4.90	72.62	4.59	75.48
5.700GHz	4.97	71.24	4.26	71.29
5.750GHz	5.12	76.00	4.90	76.70
5.800GHz	4.85	71.62	4.55	71.42
5.806GHz	4.95	73.27	4.60	73.19