

### TEST REPORT

Test Report No.: 1-6160/13-01-19



Deutsche  
Akkreditierungsstelle  
D-PL-12076-01-00

#### Testing Laboratory

##### CETECOM ICT Services GmbH

Untertürkheimer Straße 6 – 10  
66117 Saarbrücken/Germany  
Phone: + 49 681 5 98 - 0  
Fax: + 49 681 5 98 - 9075  
Internet: <http://www.cetecom.com>  
e-mail: [ict@cetecom.com](mailto:ict@cetecom.com)

##### Accredited Test Laboratory:

The testing laboratory (area of testing) is accredited according to DIN EN ISO/IEC 17025 (2005) by the Deutsche Akkreditierungsstelle GmbH (DAkkS) The accreditation is valid for the scope of testing procedures as stated in the accreditation certificate with the registration number: D-PL-12076-01-00

#### Applicant

##### Pegatron Corporation

5F, No. 76, Ligong Street Beitou District  
11261 Tapei City / TAIWAN  
Contact: Brian Chen  
e-mail: [Brian3\\_Chen@pegatroncorp.com](mailto:Brian3_Chen@pegatroncorp.com)

#### Manufacturer

##### Pegatron Corporation

5F, No. 76, Ligong Street Beitou District  
11261 Tapei City / TAIWAN

#### Test Standard/s

IEEE 1528-2003

Recommended Practice for Determining the Peak Spatial-Average Specific Absorption Rate (SAR) in the Human Head from Wireless Communications Devices: Measurement Techniques

RSS-102 Issue 4

Radio Frequency Exposure Compliance of Radiocommunication Apparatus (All Frequency Bands)

For further applied test standards please refer to section 3 of this test report.

#### Test Item

Kind of test item: Car Media System  
Device type: portable device  
**Model name:** SDIS1  
S/N serial number: N/A  
FCC-ID: VUISDIS1  
IC: 7582A-SDIS1  
Hardware status: C101  
Software status: SDIS1R\_0.344\_dev\_AU\_ER\_sdis1\_er-userdebug  
Frequency: see technical details  
Antenna: integrated antenna  
Power supply: 12 V DC  
Accessories: ---  
Test sample status: identical prototype  
Exposure category: general population / uncontrolled environment



This test report is electronically signed and valid without handwriting signature. For verification of the electronic signatures, the public keys can be requested at the testing laboratory.

#### Test Report authorised:



Oleksandr Hnatovskiy  
Specialist  
Radio Communications & EMC

#### Test performed:



Marco Scigliano  
Experienced  
Radio Communications & EMC

<b>1</b>	<b>Table of contents</b>	<b>2</b>
1	Table of contents.....	2
2	General information .....	3
2.1	Notes and disclaimer .....	3
2.2	Application details .....	3
2.3	Statement of compliance.....	3
2.4	Technical details.....	4
3	Test standards/ procedures references.....	5
3.1	RF exposure limits .....	6
4	Summary of Measurement Results .....	7
5	Test Environment.....	7
6	Test Set-up.....	8
6.1	Measurement system.....	8
6.1.1	System Description.....	8
6.1.2	Test environment.....	9
6.1.3	Probe description.....	9
6.1.4	Phantom description.....	10
6.1.5	Device holder description .....	10
6.1.6	Laptop Extension Kit for Device holder .....	10
6.1.7	Scanning procedure .....	11
6.1.8	Spatial Peak SAR Evaluation .....	12
6.1.9	Data Storage and Evaluation.....	13
6.1.10	Tissue simulating liquids: dielectric properties .....	15
6.1.11	Tissue simulating liquids: parameters .....	15
6.1.12	Measurement uncertainty evaluation for SAR test.....	16
6.1.13	Measurement uncertainty evaluation for System Check.....	20
6.1.14	System check .....	22
6.1.15	System check procedure.....	23
6.1.16	System validation .....	24
7	Detailed Test Results .....	25
7.1	Conducted power measurements.....	25
7.1.1	Conducted power measurements WLAN 5 GHz.....	26
7.1.2	Standalone SAR Test Exclusion .....	28
7.2	SAR test results.....	29
7.2.1	Results overview .....	29
7.2.2	General description of test procedures .....	29
8	Test equipment and ancillaries used for tests.....	30
9	Observations .....	30
Annex A:	System performance check.....	31
Annex B:	DASY5 measurement results.....	36
Annex B.1:	WLAN 2450MHz .....	36
Annex B.2:	WLAN 5GHz.....	37
Annex B.3:	Liquid depth.....	41
Annex C:	Photo documentation.....	42
Annex D:	Calibration parameters.....	42

**Annex E: RF Technical Brief Cover Sheet acc. to RSS-102 Annex A .....43**  
**Annex E.1: Declaration of RF Exposure Compliance.....43**  
**Annex F: Document History .....44**  
**Annex G: Further Information .....44**

**2 General information**

**2.1 Notes and disclaimer**

The test results of this test report relate exclusively to the test item specified in this test report. CETECOM ICT Services GmbH does not assume responsibility for any conclusions and generalisations drawn from the test results with regard to other specimens or samples of the type of the equipment represented by the test item. The test report may only be reproduced or published in full. Reproduction or publication of extracts from the report requires the prior written approval of CETECOM ICT Services GmbH.

This test report is electronically signed and valid without handwriting signature. For verification of the electronic signatures, the public keys can be requested at the testing laboratory.

The testing service provided by CETECOM ICT Services GmbH has been rendered under the current "General Terms and Conditions for CETECOM ICT Services GmbH".

CETECOM ICT Services GmbH will not be liable for any loss or damage resulting from false, inaccurate, inappropriate or incomplete product information provided by the customer.

Under no circumstances does the CETECOM ICT Services GmbH test report include any endorsement or warranty regarding the functionality, quality or performance of any other product or service provided.

Under no circumstances does the CETECOM ICT Services GmbH test report include or imply any product or service warranties from CETECOM ICT Services GmbH, including, without limitation, any implied warranties of merchantability, fitness for purpose, or non-infringement, all of which are expressly disclaimed by CETECOM ICT Services GmbH.

All rights and remedies regarding vendor's products and services for which CETECOM ICT Services GmbH has prepared this test report shall be provided by the party offering such products or services and not by CETECOM ICT Services GmbH.

In no case this test report can be considered as a Letter of Approval.

**2.2 Application details**

Date of receipt of order: 2013-08-21  
 Date of receipt of test item: 2014-10-14  
 Start of test: 2014-10-15  
 End of test: 2014-10-28  
 Person(s) present during the test:

**2.3 Statement of compliance**

The SAR values found for the SDIS1 Car Media System are below the maximum recommended levels of 1.6 W/Kg as averaged over any 1 g tissue according to the FCC rule §2.1093, the ANSI/IEEE C 95.1:1992, the NCRP Report Number 86 for uncontrolled environment, according to the Health Canada's Safety Code 6 and the Industry Canada Radio Standards Specification RSS-102 for General Population/Uncontrolled exposure.

For body worn operation, this device has been tested without any distance to the phantom.

## 2.4 Technical details

Band tested for this test report	Technology	Lowest transmit frequency/MHz	Highest transmit frequency/MHz	Lowest receive Frequency/MHz	Highest receive Frequency/MHz	Kind of modulation	Power Class	Tested power control level	Test channel low	Test channel middle	Test channel high	Avg. max. output power/dBm
<input type="checkbox"/>	WLAN	2412	2472	2412	2472	CCK OFDM	--	max	1	6	13	12.3
<input checked="" type="checkbox"/>	WLAN US	2412	2462	2412	2462	CCK OFDM	--	max	--	6	--	12.3
<input checked="" type="checkbox"/>	WLAN	5180	5240	5180	5240	OFDM	--	max	--	48	--	8.4
<input checked="" type="checkbox"/>	WLAN	5260	5320	5260	5320	OFDM	--	max	--	64	--	8.5
<input checked="" type="checkbox"/>	WLAN	5500	5700	5500	5700	OFDM	--	max	--	120	--	9.5
<input checked="" type="checkbox"/>	WLAN	5745	5825	5745	5825	OFDM	--	max	--	153	--	7.6
<input type="checkbox"/>	BT	2402	2480	2402	2480	GFSK	3	max	0	39	78	-5.9

### 3 Test standards/ procedures references

Test Standard	Version	Test Standard Description
IEEE 1528-2003	2003-04	Recommended Practice for Determining the Peak Spatial-Average Specific Absorption Rate (SAR) in the Human Head from Wireless Communications Devices: Measurement Techniques
IEEE 1528-2013	2014-06	Recommended Practice for Determining the Peak Spatial-Average Specific Absorption Rate (SAR) in the Human Head from Wireless Communications Devices: Measurement Techniques
RSS-102 Issue 4	2010-03	Radio Frequency Exposure Compliance of Radiocommunication Apparatus (All Frequency Bands)
Canada's Safety Code No. 6	99-EHD-237	Limits of Human Exposure to Radiofrequency Electromagnetic Fields in the Frequency Range from 3 kHz to 300 GHz
IEEE Std. C95-3	2002	IEEE Recommended Practice for the Measurement of Potentially Hazardous Electromagnetic Fields – RF and Microwave
IEEE Std. C95-1	1992	IEEE Standard for Safety Levels with Respect to Human Exposure to Radio Frequency Electromagnetic Fields, 3 kHz to 300 GHz.
IEC 62209-2	2010	Human exposure to radio frequency fields from hand-held and bodymounted wireless communication devices. Human models, instrumentation, and procedures. Procedure to determine the specific absorption rate (SAR) for wireless communication devices used in close proximity to the human body (frequency range of 30 MHz to 6 GHz)
FCC KDBs:		
KDB 865664D01v01	February 7, 2014	FCC OET SAR measurement requirements 100 MHz to 6 GHz
KDB 865664D02v01	May 28, 2013	RF Exposure Compliance Reporting and Documentation Considerations
KDB 447498D01v05	February 7, 2014	Mobile and Portable Devices RF Exposure Procedures and Equipment Authorization Policies
KDB 648474D04v01	May 28, 2013	SAR Evaluation Considerations for Wireless Handsets
KDB 941225D07v01	May 28, 2013	UMPS Mini Tablet
KDB 248227D01v01	February, 2008	SAR Measurement Procedures for 802.11 a/b/g Transmitters
KDB 450824D01v01	January, 2007	SAR Probe Calibration and System Verification considerations for measurements from 150 MHz to 3 GHz
KDB 450824D01v01	March 4, 2012	Dipole Requirements for SAR System Validation and Verification
KDB 616217D03v01	November13, 2009	SAR Evaluation Considerations for Laptop Computers with Antennas Built-in on Display Screens

### 3.1 RF exposure limits

Human Exposure	Uncontrolled Environment General Population	Controlled Environment Occupational
Spatial Peak SAR* (Brain and Trunk)	<b>1.60 mW/g</b>	8.00 mW/g
Spatial Average SAR** (Whole Body)	0.08 mW/g	0.40 mW/g
Spatial Peak SAR*** (Hands/Feet/Ankle/Wrist)	4.00 mW/g	20.00 mW/g

Table 1: RF exposure limits

The limit applied in this test report is shown in bold letters

Notes:

- \* The Spatial Peak value of the SAR averaged over any 1 gram of tissue (defined as a tissue volume in the shape of a cube) and over the appropriate averaging time
- \*\* The Spatial Average value of the SAR averaged over the whole body.
- \*\*\* The Spatial Peak value of the SAR averaged over any 10 grams of tissue (defined as a tissue volume in the shape of a cube) and over the appropriate averaging time.

Uncontrolled Environments are defined as locations where there is the exposure of individuals who have no knowledge or control of their exposure.

Controlled Environments are defined as locations where there is exposure that may be incurred by persons who are aware of the potential for exposure, (i.e. as a result of employment or occupation).

#### 4 Summary of Measurement Results

<input checked="" type="checkbox"/>	<b>No deviations from the technical specifications ascertained</b>		
<input type="checkbox"/>	Deviations from the technical specifications ascertained		
<b>Maximum SAR value reported for 1g (W/kg)</b>			
	<b>PCE</b>	<b>DTS</b>	<b>UNII</b>
<b>body worn 0 mm distance</b>	---	<b>0.096</b>	<b>0.146</b>

#### 5 Test Environment

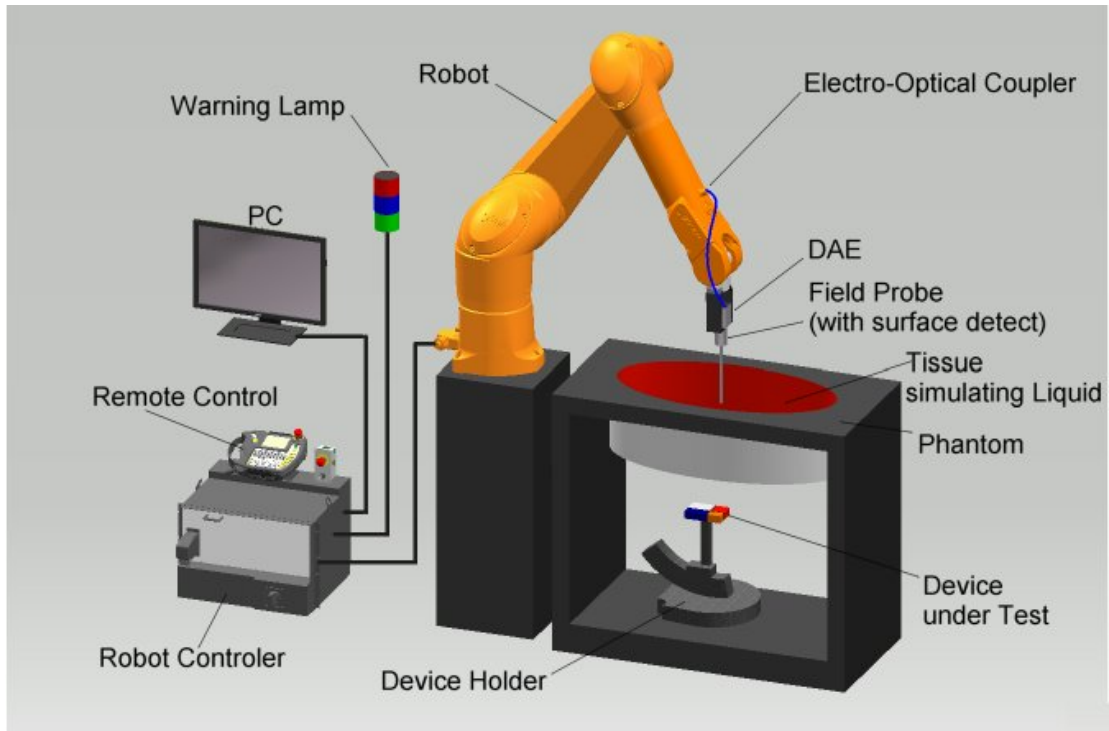
Ambient temperature:	20 – 24 °C
Tissue Simulating liquid:	20 – 24 °C
Relative humidity content:	40 – 50 %
Air pressure:	not relevant for this kind of testing
Power supply:	230 V / 50 Hz

Exact temperature values for each test are shown in the table(s) under 7.1 and/or on the measurement plots.

## 6 Test Set-up

### 6.1 Measurement system

#### 6.1.1 System Description



- The DASYS system for performing compliance tests consists of the following items:
- A standard high precision 6-axis robot (Stäubli RX family) with controller and software. An arm extension for accommodating the data acquisition electronics (DAE).
- A dosimetric probe, i.e. an isotropic E-field probe optimized and calibrated for usage in tissue simulating liquid. The probe is equipped with an optical surface detector system.
- A data acquisition electronic (DAE) which performs the signal amplification, signal multiplexing, AD-conversion, offset measurements, mechanical surface detection, collision detection, etc. The unit is battery powered with standard or rechargeable batteries. The signal is optically transmitted to the EOC.
- A unit to operate the optical surface detector which is connected to the EOC.
- The Electro-Optical Coupler (EOC) performs the conversion from the optical into a digital electric signal of the DAE. The EOC is connected to the DASYS measurement server.
- The DASYS measurement server, which performs all real-time data evaluation for field measurements and surface detection, controls robot movements and handles safety operation. A computer operating Windows 7.
- DASYS software and SEMCAD data evaluation software.
- Remote control with teach panel and additional circuitry for robot safety such as warning lamps, etc.
- The generic twin phantom enabling the testing of left-hand and right-hand usage.
- The device holder for handheld mobile phones.
- Tissue simulating liquid mixed according to the given recipes.
- System check dipoles allowing to validate the proper functioning of the system.



### 6.1.2 Test environment

The DASY measurement system is placed at the head end of a room with dimensions: 5 x 2.5 x 3 m<sup>3</sup>, the SAM phantom is placed in a distance of 75 cm from the side walls and 1.1m from the rear wall. Above the test system a 1.5 x 1.5 m<sup>2</sup> array of pyramid absorbers is installed to reduce reflections from the ceiling.

Picture 1 of the photo documentation shows a complete view of the test environment.

The system allows the measurement of SAR values larger than 0.005 mW/g.

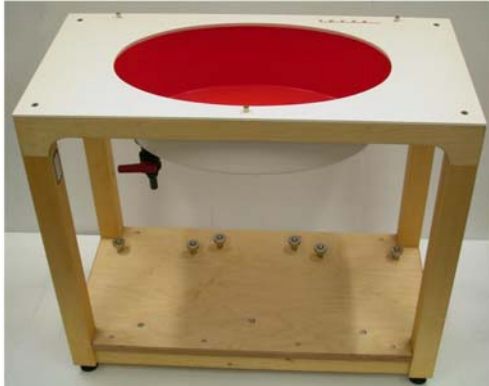
### 6.1.3 Probe description

Isotropic E-Field Probe ET3DV6 for Dosimetric Measurements

Technical data according to manufacturer information	
Construction	Symmetrical design with triangular core Built-in optical fiber for surface detection system Built-in shielding against static charges PEEK enclosure material (resistant to organic solvents, e.g., glycoether)
Calibration	In air from 10 MHz to 2.5 GHz In head tissue simulating liquid (HSL) at 900 (800-1000) MHz and 1.8 GHz (1700-1910 MHz) (accuracy $\pm 9.5\%$ ; k=2) Calibration for other liquids and frequencies upon request
Frequency	10 MHz to 3 GHz (dosimetry); Linearity: $\pm 0.2$ dB (30 MHz to 3 GHz)
Directivity	$\pm 0.2$ dB in HSL (rotation around probe axis) $\pm 0.4$ dB in HSL (rotation normal to probe axis)
Dynamic range	5 $\mu$ W/g to > 100 mW/g; Linearity: $\pm 0.2$ dB
Optical Surface Detection	$\pm 0.2$ mm repeatability in air and clear liquids over diffuse reflecting surfaces (ET3DV6 only)
Dimensions	Overall length: 330 mm Tip length: 16 mm Body diameter: 12 mm Tip diameter: 6.8 mm Distance from probe tip to dipole centers: 2.7 mm
Application	General dosimetry up to 3 GHz Compliance tests of mobile phones Fast automatic scanning in arbitrary phantoms (ET3DV6)

### 6.1.4 Phantom description

The used ELI4 Phantom meets the requirements specified in KDB865664 D01 for Specific Absorption Rate (SAR) measurements. The phantom consists of a fibreglass shell integrated in a wooden table.



The ELI4 phantom is intended for compliance testing of handheld and body-mounted wireless devices in the frequency range of 30MHz to 6 GHz. ELI4 is fully compatible with the standard IEC 62209-2 and all known tissue simulating liquids.

### 6.1.5 Device holder description

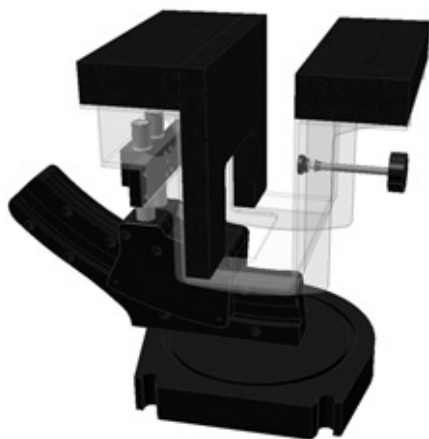


The DASY device holder has two scales for device rotation (with respect to the body axis) and the device inclination (with respect to the line between the ear openings). The plane between the ear openings and the mouth tip has a rotation angle of 65°. The bottom plate contains three pair of bolts for locking the device holder. The device holder positions are adjusted to the standard measurement positions in the three sections. This device holder is used for standard mobile phones or PDA's only. If necessary an additional support of polystyrene material is used.

Larger DUT's (e.g. notebooks) cannot be tested using the device holder without the extension kit described below.

### 6.1.6 Laptop Extension Kit for Device holder

SPEAG released a simple but effective extension for their Mounting Device that facilitates the testing of larger devices according to IEC 62209-2 (e.g., laptops, cameras, etc).



The extension is lightweight and made of POM, PET-G acrylic glass and foam. It fits easily on the upper part of the Mounting Device in place of the phone positioner.

### 6.1.7 Scanning procedure

- The DASY installation includes predefined files with recommended procedures for measurements and system check. They are read-only document files and destined as fully defined but unmeasured masks. All test positions (head or body-worn) are tested with the same configuration of test steps differing only in the grid definition for the different test positions.
- The „reference“ and „drift“ measurements are located at the beginning and end of the batch process. They measure the field drift at one single point in the liquid over the complete procedure. The indicated drift is mainly the variation of the DUT's output power and should vary max. +/- 5 %.
- The „surface check“ measurement tests the optical surface detection system of the DASY system by repeatedly detecting the surface with the optical and mechanical surface detector and comparing the results. The output gives the detecting heights of both systems, the difference between the two systems and the standard deviation of the detection repeatability. Air bubbles or refraction in the liquid due to separation of the sugar-water mixture gives poor repeatability (above  $\pm 0.1\text{mm}$ ). To prevent wrong results tests are only executed when the liquid is free of air bubbles. The difference between the optical surface detection and the actual surface depends on the probe and is specified with each probe. (It does not depend on the surface reflectivity or the probe angle to the surface within  $\pm 30^\circ$ .)
- The „area scan“ measures the SAR above the DUT or verification dipole on a parallel plane to the surface. It is used to locate the approximate location of the peak SAR with 2D spline interpolation. The robot performs a stepped movement along one grid axis while the local electrical field strength is measured by the probe. The probe is touching the surface of the SAM during acquisition of measurement values. The standard scan uses large grid spacing for faster measurement. Standard grid spacing for head measurements is 15 mm in x- and y- dimension. If a finer resolution is needed, the grid spacing can be reduced. Grid spacing and orientation have no influence on the SAR result. For special applications where the standard scan method does not find the peak SAR within the grid, e.g. mobile phones with flip cover, the grid can be adapted in orientation. Results of this coarse scan are shown in annex 2.
- A „7x7x7 zoom scan“ measures the field in a volume around the 2D peak SAR value acquired in the previous „coarse“ scan. This is a fine 7x7 grid where the robot additionally moves the probe in 7 steps along the z-axis away from the bottom of the Phantom. Grid spacing for the cube measurement is 5 mm / 4 mm in x and y-direction and 5 mm / 2 mm in z-direction. DASY is also able to perform repeated zoom scans if more than 1 peak is found during area scan. In this document, the evaluated peak 1g and 10g averaged SAR values are shown in the 2D-graphics in annex 2. Test results relevant for the specified standard (see section 3) are shown in table form in section 7.
- A Z-axis scan measures the total SAR value at the x-and y-position of the maximum SAR value found during the cube 7x7x7 scan. The probe is moved away in z-direction from the bottom of the SAM phantom in 2mm steps. This measurement shows the continuity of the liquid and can - depending in the field strength – also show the liquid depth. A z-axis scan of the measurement with maximum SAR value is shown in annex 2.

### 6.1.8 Spatial Peak SAR Evaluation

The spatial peak SAR - value for 1 and 10 g is evaluated after the Cube measurements have been done. The basis of the evaluation are the SAR values measured at the points of the fine cube grid consisting of 7 x 7 x 7 points. The algorithm that finds the maximal averaged volume is separated into three different stages.

- The data between the dipole center of the probe and the surface of the phantom are extrapolated. This data cannot be measured since the center of the dipole is 2.7 mm away from the tip of the probe and the distance between the surface and the lowest measuring point is about 1 mm (see probe calibration sheet). The extrapolated data from a cube measurement can be visualized by selecting 'Graph Evaluated'.
- The maximum interpolated value is searched with a straight-forward algorithm. Around this maximum the SAR - values averaged over the spatial volumes (1g or 10 g) are computed using the 3d-spline interpolation algorithm. If the volume cannot be evaluated (i.e., if a part of the grid was cut off by the boundary of the measurement area) the evaluation will be started on the corners of the bottom plane of the cube.
- All neighbouring volumes are evaluated until no neighbouring volume with a higher average value is found.

#### Extrapolation

The extrapolation is based on a least square algorithm [W. Gander, Computermathematik, p.168-180]. Through the points in the first 3 cm along the z-axis, polynomials of order four are calculated. These polynomials are then used to evaluate the points between the surface and the probe tip. The points, calculated from the surface, have a distance of 1 mm from each other.

#### Interpolation

The interpolation of the points is done with a 3d-Spline. The 3d-Spline is composed of three one-dimensional splines with the "Not a knot"-condition [W. Gander, Computermathematik, p.141-150] (x, y and z -direction) [Numerical Recipes in C, Second Edition, p.123ff ].

#### Volume Averaging

At First the size of the cube is calculated. Then the volume is integrated with the trapezoidal algorithm. 8000 points (20x20x20) are interpolated to calculate the average.

#### Advanced Extrapolation

DASY uses the advanced extrapolation option which is able to compensate boundary effects on E-field probes.

## 6.1.9 Data Storage and Evaluation

### Data Storage

The DASY software stores the acquired data from the data acquisition electronics as raw data (in microvolt readings from the probe sensors), together with all necessary software parameters for the data evaluation (probe calibration data, liquid parameters and device frequency and modulation data) in measurement files with the extension ".DA4", ".DA5x". The software evaluates the desired unit and format for output each time the data is visualized or exported. This allows verification of the complete software setup even after the measurement and allows correction of incorrect parameter settings. For example, if a measurement has been performed with a wrong crest factor parameter in the device setup, the parameter can be corrected afterwards and the data can be re-evaluated.

The measured data can be visualized or exported in different units or formats, depending on the selected probe type ([V/m], [A/m], [°C], [mW/g], [mW/cm<sup>2</sup>], [dBrel], etc.). Some of these units are not available in certain situations or show meaningless results, e.g., a SAR output in a lossless media will always be zero. Raw data can also be exported to perform the evaluation with other software packages.

### Data Evaluation by SEMCAD

The SEMCAD software automatically executes the following procedures to calculate the field units from the microvolt readings at the probe connector. The parameters used in the evaluation are stored in the configuration modules of the software:

Probe parameters:	- Sensitivity	$\text{Norm}_i, a_{i0}, a_{i1}, a_{i2}$
	- Conversion factor	$\text{ConvF}_i$
	- Diode compression point	$\text{Dcpi}$
Device parameters:	- Frequency	$f$
	- Crest factor	$cf$
Media parameters:	- Conductivity	$\sigma$
	- Density	$\rho$

These parameters must be set correctly in the software. They can be found in the component documents or they can be imported into the software from the configuration files issued for the DASY components. In the direct measuring mode of the multimeter option, the parameters of the actual system setup are used. In the scan visualization and export modes, the parameters stored in the corresponding document files are used.

The first step of the evaluation is a linearization of the filtered input signal to account for the compression characteristics of the detector diode. The compensation depends on the input signal, the diode type and the DC-transmission factor from the diode to the evaluation electronics.

If the exciting field is pulsed, the crest factor of the signal must be known to correctly compensate for peak power. The formula for each channel can be given as:

$$V_i = U_i + U_i^2 \cdot cf/dcp_i$$

with  $V_i$  = compensated signal of channel i (i = x, y, z)  
 $U_i$  = input signal of channel i (i = x, y, z)  
 cf = crest factor of exciting field (DASY parameter)  
 $dcp_i$  = diode compression point (DASY parameter)

From the compensated input signals the primary field data for each channel can be evaluated:

E-field probes:  $E_i = (V_i / Norm_i \cdot ConvF)^{1/2}$

H-field probes:  $H_i = (V_i)^{1/2} \cdot (a_{i0} + a_{i1}f + a_{i2}f^2)/f$

with  $V_i$  = compensated signal of channel i (i = x, y, z)  
 $Norm_i$  = sensor sensitivity of channel i (i = x, y, z)  
 [mV/(V/m)<sup>2</sup>] for E-field Probes  
 $ConvF$  = sensitivity enhancement in solution  
 $a_{ij}$  = sensor sensitivity factors for H-field probes  
 $f$  = carrier frequency [GHz]  
 $E_i$  = electric field strength of channel i in V/m  
 $H_i$  = magnetic field strength of channel i in A/m

The RSS value of the field components gives the total field strength (Hermitian magnitude):

$$E_{tot} = (E_x^2 + E_y^2 + E_z^2)^{1/2}$$

The primary field data are used to calculate the derived field units.

$$SAR = (E_{tot}^2 \cdot \sigma) / (\rho \cdot 1000)$$

with SAR = local specific absorption rate in mW/g  
 $E_{tot}$  = total field strength in V/m  
 $\sigma$  = conductivity in [mho/m] or [Siemens/m]  
 $\rho$  = equivalent tissue density in g/cm<sup>3</sup>

Note that the density is normally set to 1 (or 1.06), to account for actual brain density rather than the density of the simulation liquid. The power flow density is calculated assuming the excitation field to be a free space field.

$$P_{pwe} = E_{tot}^2 / 3770 \quad \text{or} \quad P_{pwe} = H_{tot}^2 \cdot 37.7$$

with  $P_{pwe}$  = equivalent power density of a plane wave in mW/cm<sup>2</sup>  
 $E_{tot}$  = total electric field strength in V/m  
 $H_{tot}$  = total magnetic field strength in A/m

### 6.1.10 Tissue simulating liquids: dielectric properties

The following materials are used for producing the tissue-equivalent materials.

(Liquids used for tests described in section 7. are marked with ☒) :

Ingredients (% of weight)	Frequency (MHz)								
	<input type="checkbox"/> 450	<input type="checkbox"/> 750	<input type="checkbox"/> 835	<input type="checkbox"/> 900	<input type="checkbox"/> 1450	<input type="checkbox"/> 1750	<input type="checkbox"/> 1900	<input checked="" type="checkbox"/> 2450	<input checked="" type="checkbox"/> 5000
frequency band									
Water	51.16	51.7	52.4	56.0	71.40	71.45	71.56	71.65	64 - 78
Salt (NaCl)	1.49	0.9	1.40	0.76	0.55	0.5	0.39	0.3	2 - 3
Sugar	46.78	47.2	45.0	41.76	0.0	0.0	0.0	0.0	0.0
HEC	0.52	0.0	1.0	1.21	0.0	0.0	0.0	0.0	0.0
Bactericide	0.05	0.1	0.1	0.27	0.1	0.1	0.1	0.1	0.0
Tween 20	0.0	0.0	0.0	0.0	27.95	27.95	27.95	27.95	0.0
Emulsifiers	0.0	0.0	0.0	0.0	0.0	0.0	0.0	0.0	9 - 15
Mineral Oil	0.0	0.0	0.0	0.0	0.0	0.0	0.0	0.0	11 - 18

Table 2: Body tissue dielectric properties

Salt: 99+% Pure Sodium Chloride

Water: De-ionized, 16MΩ+ resistivity

Sugar: 98+% Pure Sucrose

HEC: Hydroxyethyl Cellulose

Tween 20: Polyoxyethylene (20) sorbitan monolaurate

### 6.1.11 Tissue simulating liquids: parameters

Liquid MSL	Freq. (MHz)	Target body tissue		Measurement body tissue					Measurement date
		Permittivity	Conductivity (S/m)	Permittivity	Dev. %	Conductivity		Dev. %	
						ε"	(S/m)		
2450	2412	52.75	1.91	51.1	-3.2%	14.72	1.97	3.2%	2014-10-15
	2437	52.72	1.94	51.0	-3.4%	14.77	2.00	3.3%	
	2462	52.68	1.97	50.9	-3.4%	14.79	2.03	3.0%	
	2472	52.67	1.98	50.9	-3.4%	14.82	2.04	2.9%	
5GHz	5200	35.99	4.66	37.5	4.1%	16.30	4.71	1.3%	2014-10-21
	5240	35.94	4.70	37.3	3.7%	16.47	4.80	2.2%	
	5320	35.85	4.78	37.3	3.9%	16.32	4.83	1.1%	
	5500	35.64	4.96	37.0	3.8%	16.51	5.05	1.8%	
	5600	35.53	5.07	36.8	3.5%	16.50	5.14	1.5%	
	5765	35.34	5.23	36.8	4.0%	16.60	5.32	1.7%	
	5800	35.30	5.27	36.7	4.0%	16.46	5.31	0.8%	

Table 3: Parameter of the body tissue simulating liquid

Note: The dielectric properties have been measured using the contact probe method at 22°C.

### 6.1.12 Measurement uncertainty evaluation for SAR test

Relative DASY5 Uncertainty Budget for SAR Tests								
According to IEEE 1528/2011 and IEC62209-1/2011 (0.3-3GHz range)								
Error Description	Uncertainty Value	Probability Distribution	Divisor	$c_i$	$c_i$	Standard Uncertainty		$v_i^2$ or $v_{eff}$
				(1g)	(10g)	± %, (1g)	± %, (10g)	
<b>Measurement System</b>								
Probe calibration	± 6.0 %	Normal	1	1	1	± 6.0 %	± 6.0 %	∞
Axial isotropy	± 4.7 %	Rectangular	√ 3	0.7	0.7	± 1.9 %	± 1.9 %	∞
Hemispherical isotropy	± 9.6 %	Rectangular	√ 3	0.7	0.7	± 3.9 %	± 3.9 %	∞
Boundary effects	± 1.0 %	Rectangular	√ 3	1	1	± 0.6 %	± 0.6 %	∞
Probe linearity	± 4.7 %	Rectangular	√ 3	1	1	± 2.7 %	± 2.7 %	∞
System detection limits	± 1.0 %	Rectangular	√ 3	1	1	± 0.6 %	± 0.6 %	∞
Modulation Response	± 2.4 %	Rectangular	√ 3	1	1	± 1.4 %	± 1.4 %	∞
Readout electronics	± 0.3 %	Normal	1	1	1	± 0.3 %	± 0.3 %	∞
Response time	± 0.8 %	Rectangular	√ 3	1	1	± 0.5 %	± 0.5 %	∞
Integration time	± 2.6 %	Rectangular	√ 3	1	1	± 1.5 %	± 1.5 %	∞
RF ambient noise	± 3.0 %	Rectangular	√ 3	1	1	± 1.7 %	± 1.7 %	∞
RF ambient reflections	± 3.0 %	Rectangular	√ 3	1	1	± 1.7 %	± 1.7 %	∞
Probe positioner	± 0.4 %	Rectangular	√ 3	1	1	± 0.2 %	± 0.2 %	∞
Probe positioning	± 2.9 %	Rectangular	√ 3	1	1	± 1.7 %	± 1.7 %	∞
Max. SAR evaluation	± 2.0 %	Rectangular	√ 3	1	1	± 1.2 %	± 1.2 %	∞
<b>Test Sample Related</b>								
Device positioning	± 2.9 %	Normal	1	1	1	± 2.9 %	± 2.9 %	145
Device holder uncertainty	± 3.6 %	Normal	1	1	1	± 3.6 %	± 3.6 %	5
Power drift	± 5.0 %	Rectangular	√ 3	1	1	± 2.9 %	± 2.9 %	∞
<b>Phantom and Set-up</b>								
Phantom uncertainty	± 6.1 %	Rectangular	√ 3	1	1	± 3.5 %	± 3.5 %	∞
SAR correction	± 1.9 %	Rectangular	√ 3	1	0.84	± 1.1 %	± 0.9 %	∞
Liquid conductivity (meas.)	± 5.0 %	Rectangular	√ 3	0.78	0.71	± 2.3 %	± 2.0 %	∞
Liquid permittivity (meas.)	± 5.0 %	Rectangular	√ 3	0.26	0.26	± 0.8 %	± 0.8 %	∞
Temp. Unc. - Conductivity	± 3.4 %	Rectangular	√ 3	0.78	0.71	± 1.5 %	± 1.4 %	∞
Temp. Unc. - Permittivity	± 0.4 %	Rectangular	√ 3	0.23	0.26	± 0.1 %	± 0.1 %	∞
<b>Combined Uncertainty</b>						± 11.3 %	± 11.3 %	330
<b>Expanded Std. Uncertainty</b>						± 22.7 %	± 22.5 %	

Table 4: Measurement uncertainties

Worst-Case uncertainty budget for DASY5 assessed according to IEEE 1528/2011 and IEC 62209-1/2011 draft standards. The budget is valid for the frequency range 300MHz -3 GHz and represents a worst-case analysis. For specific tests and configurations, the uncertainty could be considerable smaller.



Relative DASY5 Uncertainty Budget for SAR Tests								
According to IEC62209-2/2010 (30 MHz - 6 GHz range)								
Error Description	Uncertainty Value	Probability Distribution	Divisor	$C_i$	$C_i$	Standard Uncertainty		$v_i^2$ or $v_{eff}$
				(1g)	(10g)	± %, (1g)	± %, (10g)	
<b>Measurement System</b>								
Probe calibration	± 6.6 %	Normal	1	1	1	± 6.6 %	± 6.6 %	∞
Axial isotropy	± 4.7 %	Rectangular	√ 3	0.7	0.7	± 1.9 %	± 1.9 %	∞
Hemispherical isotropy	± 9.6 %	Rectangular	√ 3	0.7	0.7	± 3.9 %	± 3.9 %	∞
Boundary effects	± 2.0 %	Rectangular	√ 3	1	1	± 1.2 %	± 1.2 %	∞
Probe linearity	± 4.7 %	Rectangular	√ 3	1	1	± 2.7 %	± 2.7 %	∞
System detection limits	± 1.0 %	Rectangular	√ 3	1	1	± 0.6 %	± 0.6 %	∞
Modulation Response	± 2.4 %	Rectangular	√ 3	1	1	± 1.4 %	± 1.4 %	∞
Readout electronics	± 0.3 %	Normal	1	1	1	± 0.3 %	± 0.3 %	∞
Response time	± 0.8 %	Rectangular	√ 3	1	1	± 0.5 %	± 0.5 %	∞
Integration time	± 2.6 %	Rectangular	√ 3	1	1	± 1.5 %	± 1.5 %	∞
RF ambient noise	± 3.0 %	Rectangular	√ 3	1	1	± 1.7 %	± 1.7 %	∞
RF ambient reflections	± 3.0 %	Rectangular	√ 3	1	1	± 1.7 %	± 1.7 %	∞
Probe positioner	± 0.8 %	Rectangular	√ 3	1	1	± 0.5 %	± 0.5 %	∞
Probe positioning	± 6.7 %	Rectangular	√ 3	1	1	± 3.9 %	± 3.9 %	∞
Post-processing	± 4.0 %	Rectangular	√ 3	1	1	± 2.3 %	± 2.3 %	∞
<b>Test Sample Related</b>								
Device positioning	± 2.9 %	Normal	1	1	1	± 2.9 %	± 2.9 %	145
Device holder uncertainty	± 3.6 %	Normal	1	1	1	± 3.6 %	± 3.6 %	5
Power drift	± 5.0 %	Rectangular	√ 3	1	1	± 2.9 %	± 2.9 %	∞
<b>Phantom and Set-up</b>								
Phantom uncertainty	± 7.9 %	Rectangular	√ 3	1	1	± 4.6 %	± 4.6 %	∞
SAR correction	± 1.9 %	Rectangular	√ 3	1	0.84	± 1.1 %	± 0.9 %	∞
Liquid conductivity (meas.)	± 5.0 %	Rectangular	√ 3	0.78	0.71	± 2.3 %	± 2.0 %	∞
Liquid permittivity (meas.)	± 5.0 %	Rectangular	√ 3	0.26	0.26	± 0.8 %	± 0.8 %	∞
Temp. Unc. - Conductivity	± 3.4 %	Rectangular	√ 3	0.78	0.71	± 1.5 %	± 1.4 %	∞
Temp. Unc. - Permittivity	± 0.4 %	Rectangular	√ 3	0.23	0.26	± 0.1 %	± 0.1 %	∞
<b>Combined Uncertainty</b>						± 12.7 %	± 12.6 %	330
<b>Expanded Std. Uncertainty</b>						± 25.4 %	± 25.3 %	

Table 5: Measurement uncertainties. Worst-Case uncertainty budget for DASY5 assessed according to according to IEC 62209-2/2010 standard. The budget is valid for the frequency range 30MHz - 6 GHz and represents a worst-case analysis. For specific tests and configurations, the uncertainty could be considerable smaller.

Relative DASY5 Uncertainty Budget for SAR Tests								
According to IEEE 1528-2003, IEC 62209-1 for the 3-6 GHz range								
Error Description	Uncertainty Value	Probability Distribution	Divisor	$c_i$	$c_i$	Standard Uncertainty		$v_i^2$ or
				(1g)	(10g)	± %, (1g)	± %, (10g)	$v_{eff}$
<b>Measurement System</b>								
Probe calibration	± 6.6 %	Normal	1	1	1	± 6.6 %	± 6.6 %	∞
Axial isotropy	± 4.7 %	Rectangular	√ 3	0.7	0.7	± 1.9 %	± 1.9 %	∞
Hemispherical isotropy	± 9.6 %	Rectangular	√ 3	0.7	0.7	± 3.9 %	± 3.9 %	∞
Boundary effects	± 2.0 %	Rectangular	√ 3	1	1	± 1.2 %	± 1.2 %	∞
Probe linearity	± 4.7 %	Rectangular	√ 3	1	1	± 2.7 %	± 2.7 %	∞
System detection limits	± 1.0 %	Rectangular	√ 3	1	1	± 0.6 %	± 0.6 %	∞
Readout electronics	± 0.3 %	Normal	1	1	1	± 0.3 %	± 0.3 %	∞
Response time	± 0.8 %	Rectangular	√ 3	1	1	± 0.5 %	± 0.5 %	∞
Integration time	± 2.6 %	Rectangular	√ 3	1	1	± 1.5 %	± 1.5 %	∞
RF ambient noise	± 3.0 %	Rectangular	√ 3	1	1	± 1.7 %	± 1.7 %	∞
RF ambient reflections	± 3.0 %	Rectangular	√ 3	1	1	± 1.7 %	± 1.7 %	∞
Probe positioner	± 0.8 %	Rectangular	√ 3	1	1	± 0.5 %	± 0.5 %	∞
Probe positioning	± 6.7 %	Rectangular	√ 3	1	1	± 3.9 %	± 3.9 %	∞
Max. SAR evaluation	± 4.0 %	Rectangular	√ 3	1	1	± 2.3 %	± 2.3 %	∞
<b>Test Sample Related</b>								
Device positioning	± 2.9 %	Normal	1	1	1	± 2.9 %	± 2.9 %	145
Device holder uncertainty	± 3.6 %	Normal	1	1	1	± 3.6 %	± 3.6 %	5
Power drift	± 5.0 %	Rectangular	√ 3	1	1	± 2.9 %	± 2.9 %	∞
<b>Phantom and Set-up</b>								
Phantom uncertainty	± 4.0 %	Rectangular	√ 3	1	1	± 2.3 %	± 2.3 %	∞
Liquid conductivity (target)	± 5.0 %	Rectangular	√ 3	0.64	0.43	± 1.8 %	± 1.2 %	∞
Liquid conductivity (meas.)	± 5.0 %	Rectangular	√ 3	0.64	0.43	± 1.8 %	± 1.2 %	∞
Liquid permittivity (target)	± 5.0 %	Rectangular	√ 3	0.6	0.49	± 1.7 %	± 1.4 %	∞
Liquid permittivity (meas.)	± 5.0 %	Rectangular	√ 3	0.6	0.49	± 1.7 %	± 1.4 %	∞
<b>Combined Uncertainty</b>						± 12.1 %	± 11.9 %	330
<b>Expanded Std. Uncertainty</b>						± 24.3 %	± 23.8 %	

Table 6: Measurement uncertainties

Worst-Case uncertainty budget for DASY5 valid for 3G communication signals and frequency range 3 - 6 GHz. Probe calibration error reflects uncertainty of the EX3D probe. For specific tests and configurations, the uncertainty could be considerable smaller.

Relative DASY5 Uncertainty Budget for SAR Tests								
According to IEEE 1528/2011 and IEC62209-1/2011 (3-6GHz range)								
Error Description	Uncertainty Value	Probability Distribution	Divisor	$C_i$	$C_i$	Standard Uncertainty		$v_i^2$ or $v_{eff}$
				(1g)	(10g)	± %, (1g)	± %, (10g)	
<b>Measurement System</b>								
Probe calibration	± 6.6 %	Normal	1	1	1	± 6.6 %	± 6.6 %	∞
Axial isotropy	± 4.7 %	Rectangular	√ 3	0.7	0.7	± 1.9 %	± 1.9 %	∞
Hemispherical isotropy	± 9.6 %	Rectangular	√ 3	0.7	0.7	± 3.9 %	± 3.9 %	∞
Boundary effects	± 2.0 %	Rectangular	√ 3	1	1	± 1.2 %	± 1.2 %	∞
Probe linearity	± 4.7 %	Rectangular	√ 3	1	1	± 2.7 %	± 2.7 %	∞
System detection limits	± 1.0 %	Rectangular	√ 3	1	1	± 0.6 %	± 0.6 %	∞
Modulation Response	± 2.4 %	Rectangular	√ 3	1	1	± 1.4 %	± 1.4 %	∞
Readout electronics	± 0.3 %	Normal	1	1	1	± 0.3 %	± 0.3 %	∞
Response time	± 0.8 %	Rectangular	√ 3	1	1	± 0.5 %	± 0.5 %	∞
Integration time	± 2.6 %	Rectangular	√ 3	1	1	± 1.5 %	± 1.5 %	∞
RF ambient noise	± 3.0 %	Rectangular	√ 3	1	1	± 1.7 %	± 1.7 %	∞
RF ambient reflections	± 3.0 %	Rectangular	√ 3	1	1	± 1.7 %	± 1.7 %	∞
Probe positioner	± 0.8 %	Rectangular	√ 3	1	1	± 0.5 %	± 0.5 %	∞
Probe positioning	± 6.7 %	Rectangular	√ 3	1	1	± 3.9 %	± 3.9 %	∞
Max. SAR evaluation	± 4.0 %	Rectangular	√ 3	1	1	± 2.3 %	± 2.3 %	∞
<b>Test Sample Related</b>								
Device positioning	± 2.9 %	Normal	1	1	1	± 2.9 %	± 2.9 %	145
Device holder uncertainty	± 3.6 %	Normal	1	1	1	± 3.6 %	± 3.6 %	5
Power drift	± 5.0 %	Rectangular	√ 3	1	1	± 2.9 %	± 2.9 %	∞
<b>Phantom and Set-up</b>								
Phantom uncertainty	± 6.6 %	Rectangular	√ 3	1	1	± 3.8 %	± 3.8 %	∞
SAR correction	± 1.9 %	Rectangular	√ 3	1	0.84	± 1.1 %	± 0.9 %	∞
Liquid conductivity (meas.)	± 5.0 %	Rectangular	√ 3	0.78	0.71	± 2.3 %	± 2.0 %	∞
Liquid permittivity (meas.)	± 5.0 %	Rectangular	√ 3	0.26	0.26	± 0.8 %	± 0.8 %	∞
Temp. Unc. - Conductivity	± 3.4 %	Rectangular	√ 3	0.78	0.71	± 1.5 %	± 1.4 %	∞
Temp. Unc. - Permittivity	± 0.4 %	Rectangular	√ 3	0.23	0.26	± 0.1 %	± 0.1 %	∞
<b>Combined Uncertainty</b>						± 12.4 %	± 12.4 %	330
<b>Expanded Std. Uncertainty</b>						± 24.9 %	± 24.8 %	

Table 7: Measurement uncertainties

Worst-Case uncertainty budget for DASY5 assessed according to IEEE 1528/2011 and IEC 62209-1/2011 draft standards. The budget is valid for the frequency range 3GHz -6GHz and represents a worst-case analysis. For specific tests and configurations, the uncertainty could be considerable smaller.

### 6.1.13 Measurement uncertainty evaluation for System Check

Uncertainty of a System Performance Check with DASY5 System for the 0.3 - 3 GHz range								
Source of uncertainty	Uncertainty Value	Probability Distribution	Divisor	$c_i$	$c_i$	Standard Uncertainty		$v_i^2$ or $v_{eff}$
				(1g)	(10g)	± %, (1g)	± %, (10g)	
<b>Measurement System</b>								
Probe calibration	± 6.0 %	Normal	1	1	1	± 6.0 %	± 6.0 %	∞
Axial isotropy	± 4.7 %	Rectangular	√ 3	0.7	0.7	± 1.9 %	± 1.9 %	∞
Hemispherical isotropy	± 0.0 %	Rectangular	√ 3	0.7	0.7	± 0.0 %	± 0.0 %	∞
Boundary effects	± 1.0 %	Rectangular	√ 3	1	1	± 0.6 %	± 0.6 %	∞
Probe linearity	± 4.7 %	Rectangular	√ 3	1	1	± 2.7 %	± 2.7 %	∞
System detection limits	± 1.0 %	Rectangular	√ 3	1	1	± 0.6 %	± 0.6 %	∞
Readout electronics	± 0.3 %	Normal	1	1	1	± 0.3 %	± 0.3 %	∞
Response time	± 0.0 %	Rectangular	√ 3	1	1	± 0.0 %	± 0.0 %	∞
Integration time	± 0.0 %	Rectangular	√ 3	1	1	± 0.0 %	± 0.0 %	∞
RF ambient conditions	± 3.0 %	Rectangular	√ 3	1	1	± 1.7 %	± 1.7 %	∞
Probe positioner	± 0.4 %	Rectangular	√ 3	1	1	± 0.2 %	± 0.2 %	∞
Probe positioning	± 2.9 %	Rectangular	√ 3	1	1	± 1.7 %	± 1.7 %	∞
Max. SAR evaluation	± 1.0 %	Rectangular	√ 3	1	1	± 0.6 %	± 0.6 %	∞
<b>Test Sample Related</b>								
Dev. of experimental dipole	± 0.0 %	Rectangular	√ 3	1	1	± 0.0 %	± 0.0 %	∞
Source to liquid distance	± 2.0 %	Rectangular	√ 3	1	1	± 1.2 %	± 1.2 %	∞
Power drift	± 3.4 %	Rectangular	√ 3	1	1	± 2.0 %	± 2.0 %	∞
<b>Phantom and Set-up</b>								
Phantom uncertainty	± 4.0 %	Rectangular	√ 3	1	1	± 2.3 %	± 2.3 %	∞
SAR correction	± 1.9 %	Rectangular	√ 3	1	0.84	± 1.1 %	± 0.9 %	∞
Liquid conductivity (meas.)	± 5.0 %	Normal	1	0.78	0.71	± 3.9 %	± 3.6 %	∞
Liquid permittivity (meas.)	± 5.0 %	Normal	1	0.26	0.26	± 1.3 %	± 1.3 %	∞
Temp. unc. - Conductivity	± 1.7 %	Rectangular	√ 3	0.78	0.71	± 0.8 %	± 0.7 %	∞
Temp. unc. - Permittivity	± 0.3 %	Rectangular	√ 3	0.23	0.26	± 0.0 %	± 0.0 %	∞
<b>Combined Uncertainty</b>						± 9.1 %	± 8.9 %	330
<b>Expanded Std. Uncertainty</b>						± 18.2 %	± 17.9 %	

Table 8: Measurement uncertainties of the System Check with DASY5 (0.3-3GHz)

Uncertainty of a System Performance Check with DASY5 System for the 3 - 6 GHz range								
Source of uncertainty	Uncertainty Value	Probability Distribution	Divisor	$c_i$	$c_i$	Standard Uncertainty		$v_i^2$ or $v_{eff}$
				(1g)	(10g)	± %, (1g)	± %, (10g)	
<b>Measurement System</b>								
Probe calibration	± 6.6 %	Normal	1	1	1	± 6.6 %	± 6.6 %	∞
Axial isotropy	± 4.7 %	Rectangular	√ 3	0.7	0.7	± 1.9 %	± 1.9 %	∞
Hemispherical isotropy	± 0.0 %	Rectangular	√ 3	0.7	0.7	± 0.0 %	± 0.0 %	∞
Boundary effects	± 1.0 %	Rectangular	√ 3	1	1	± 0.6 %	± 0.6 %	∞
Probe linearity	± 4.7 %	Rectangular	√ 3	1	1	± 2.7 %	± 2.7 %	∞
System detection limits	± 1.0 %	Rectangular	√ 3	1	1	± 0.6 %	± 0.6 %	∞
Readout electronics	± 0.3 %	Normal	1	1	1	± 0.3 %	± 0.3 %	∞
Response time	± 0.0 %	Rectangular	√ 3	1	1	± 0.0 %	± 0.0 %	∞
Integration time	± 0.0 %	Rectangular	√ 3	1	1	± 0.0 %	± 0.0 %	∞
RF ambient conditions	± 3.0 %	Rectangular	√ 3	1	1	± 1.7 %	± 1.7 %	∞
Probe positioner	± 0.8 %	Rectangular	√ 3	1	1	± 0.5 %	± 0.5 %	∞
Probe positioning	± 6.7 %	Rectangular	√ 3	1	1	± 3.9 %	± 3.9 %	∞
Max. SAR evaluation	± 1.0 %	Rectangular	√ 3	1	1	± 0.6 %	± 0.6 %	∞
<b>Test Sample Related</b>								
Dev. of experimental dipole	± 0.0 %	Rectangular	√ 3	1	1	± 0.0 %	± 0.0 %	∞
Source to liquid distance	± 2.0 %	Rectangular	√ 3	1	1	± 1.2 %	± 1.2 %	∞
Power drift	± 3.4 %	Rectangular	√ 3	1	1	± 2.0 %	± 2.0 %	∞
<b>Phantom and Set-up</b>								
Phantom uncertainty	± 4.0 %	Rectangular	√ 3	1	1	± 2.3 %	± 2.3 %	∞
SAR correction	± 1.9 %	Rectangular	√ 3	1	0.84	± 1.1 %	± 0.9 %	∞
Liquid conductivity (meas.)	± 5.0 %	Normal	1	0.78	0.71	± 3.9 %	± 3.6 %	∞
Liquid permittivity (meas.)	± 5.0 %	Normal	1	0.26	0.26	± 1.3 %	± 1.3 %	∞
Temp. unc. - Conductivity	± 1.7 %	Rectangular	√ 3	0.78	0.71	± 0.8 %	± 0.7 %	∞
Temp. unc. - Permittivity	± 0.3 %	Rectangular	√ 3	0.23	0.26	± 0.0 %	± 0.0 %	∞
<b>Combined Uncertainty</b>						± 10.1 %	± 10.0 %	330
<b>Expanded Std. Uncertainty</b>						± 20.2 %	± 19.9 %	

Table 9: Measurement uncertainties of the System Check with DASY5 (3-6GHz)

Note: Worst case probe calibration uncertainty has been applied for all probes used during the measurements.

### 6.1.14 System check

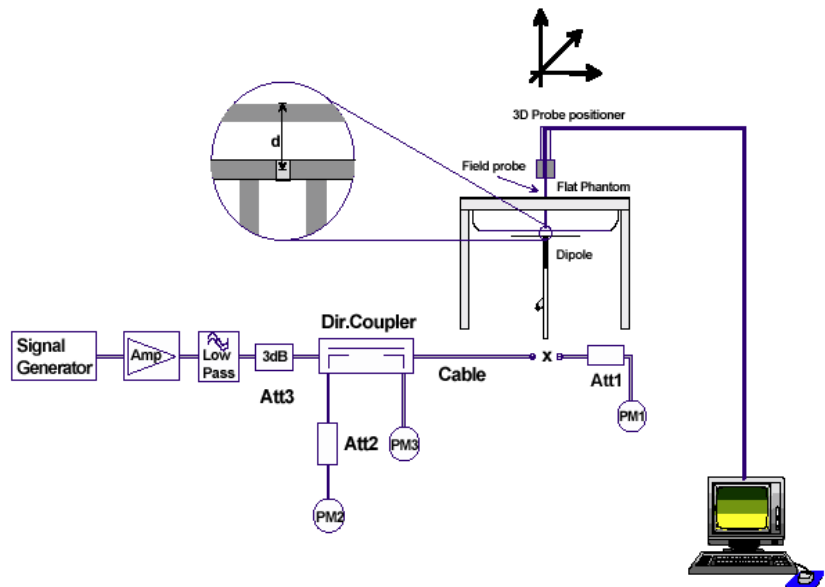
The system check is performed for verifying the accuracy of the complete measurement system and performance of the software. The system check is performed with tissue equivalent material according to IEEE 1528. The following table shows system check results for all frequency bands and tissue liquids used during the tests (plot(s) see annex A).

System performance check (1000 mW)								
System validation Kit	Frequency	Target SAR <sub>1g</sub> /mW/g (+/- 10%)	Target SAR <sub>10g</sub> /mW/g (+/- 10%)	Measured SAR <sub>1g</sub> / mW/g	SAR <sub>1g</sub> dev.	Measured SAR <sub>10g</sub> / mW/g	SAR <sub>10g</sub> dev.	Measured date
D2450V2 S/N: 710	2450 MHz body	51.20	23.90	53.20	3.9%	24.80	3.8%	2014-10-16
D5GHzV2 S/N: 1055	5200 MHz body	74.20	20.80	75.70	2.0%	21.40	2.9%	2014-10-21
D5GHzV2 S/N: 1055	5200 MHz body	74.20	20.80	76.70	3.4%	21.50	3.4%	2014-10-24
D5GHzV2 S/N: 1055	5500 MHz body	77.90	21.70	80.80	3.7%	22.40	3.2%	2014-10-24
D5GHzV2 S/N: 1055	5800 MHz body	73.30	20.20	77.00	5.0%	21.40	5.9%	2014-10-28

Table 10: Results system check

### 6.1.15 System check procedure

The system check is performed by using a validation dipole which is positioned parallel to the planar part of the SAM phantom at the reference point. The distance of the dipole to the SAM phantom is determined by a plexiglass spacer. The dipole is connected to the signal source consisting of signal generator and amplifier via a directional coupler, N-connector cable and adaption to SMA. It is fed with a power of 1000 mW for frequencies below 2 GHz or 100 mW for frequencies above 2 GHz. To adjust this power a power meter is used. The power sensor is connected to the cable before the system check to measure the power at this point and do adjustments at the signal generator. At the outputs of the directional coupler both return loss as well as forward power are controlled during the validation to make sure that emitted power at the dipole is kept constant. This can also be checked by the power drift measurement after the test (result on plot). System check results have to be equal or near the values determined during dipole calibration (target SAR in table above) with the relevant liquids and test system.



### 6.1.16 System validation

The system validation is performed in a similar way as a system check. It needs to be performed once a SAR measurement system has been established and allows an evaluation of the system accuracy with all components used together with the specified system. It has to be repeated at least once a year or when new system components are used (DAE, probe, phantom, dipole, liquid type).

In addition to the procedure used during system check a system validation also includes checks of probe isotropy, probe modulation factor and RF signal.

The following table lists the system validations relevant for this test report:

Frequency (MHz)	Test System	DASY SW	Dipole Type /SN	Probe Type / SN	Calibrated signal type(s)	DAE unit Type / SN	head validation	body validation
2450	Saarbrücken / SAR-1	V52.8.7	D2450V2 / 710	EX3DV4 / 3944	CW	DAE3 / 413	2014-07-26	2014-08-26
5200	Saarbrücken / SAR-1	V52.8.7	D5GHzV2 / 1055	EX3DV4 / 3944	CW	DAE3 / 413	2014-09-05	2014-09-02
5500	Saarbrücken / SAR-1	V52.8.7	D5GHzV2 / 1055	EX3DV4 / 3944	CW	DAE3 / 413	2014-09-08	2014-09-03
5800	Saarbrücken / SAR-1	V52.8.7	D5GHzV2 / 1055	EX3DV4 / 3944	CW	DAE3 / 413	2014-09-09	2014-09-03



## 7 Detailed Test Results

### 7.1 Conducted power measurements

802.11b		maximum average conducted output power [dBm]			
Band	Ch	1Mbps	2Mbps	5.5Mbps	11Mbps
2450MHz	1	12.1	12.2	11.9	11.6
	6	<b>12.3</b>	12.2	11.8	11.6
	11	12.0	12.0	11.7	11.4

Table 11: Test results conducted power measurement 802.11b

802.11g		maximum average conducted output power [dBm]							
Band	Ch	6Mbps	9Mbps	12Mbps	18Mbps	24Mbps	36Mbps	48Mbps	54Mbps
2450MHz	1	9.9	9.6	9.3	9.0	8.2	7.6	7.1	6.8
	6	9.9	9.4	9.4	9.0	8.3	7.5	7.0	6.8
	11	9.8	9.3	9.2	8.7	8.1	7.4	6.8	6.7

Table 12: Test results conducted power measurement 802.11g

802.11n HT-20		maximum average conducted output power [dBm]							
Band	Ch	MCS-0 6.5Mbps	MCS-1 13Mbps	MCS-2 19.5Mbps	MCS-3 26Mbps	MCS-4 39Mbps	MCS-5 52Mbps	MCS-6 58.5Mbps	MCS-7 65Mbps
2450MHz	1	9.9	9.6	8.9	8.7	7.8	7.3	7.0	6.9
	6	9.9	9.4	9.1	8.6	7.8	7.2	7.0	6.9
	11	9.7	9.3	8.8	8.4	7.7	7.0	6.9	6.8

Table 13: Test results conducted power measurement 802.11n HT-20

### 7.1.1 Conducted power measurements WLAN 5 GHz

802.11a		maximum average conducted output power [dBm]							
Band	Ch	6Mbps	9Mbps	12Mbps	18Mbps	24Mbps	36Mbps	48Mbps	54Mbps
5200	36	8.4	7.8	7.7	7.2	6.8	6.3	5.7	5.4
	40	8.4	7.8	7.6	7.2	6.8	6.2	5.6	5.4
	44	8.4	7.8	7.7	7.1	6.7	6.3	5.7	5.3
	48	<b>8.4</b>	7.9	7.7	7.3	6.8	6.4	5.7	5.5
5300	52	8.4	8.2	8.1	7.7	6.8	6.7	6.1	5.9
	56	8.5	8.2	8.0	7.6	6.9	6.7	6.0	5.8
	60	8.4	8.2	8.1	7.6	6.8	6.7	6.1	5.8
	64	<b>8.5</b>	8.3	8.2	7.7	6.9	6.8	6.2	5.9
5600	100	8.8	8.4	8.1	7.8	7.2	6.9	6.1	6.0
	104	8.8	8.7	8.2	7.9	7.2	7.2	6.2	6.1
	108	9.0	8.5	8.4	7.9	7.4	7.0	6.4	6.1
	112	8.8	8.7	8.6	8.0	7.2	7.2	6.6	6.2
	116	9.1	8.9	8.7	8.0	7.5	7.4	6.7	6.2
	120	<b>9.5</b>	9.4	9.2	8.9	7.9	7.9	7.2	7.1
	124	9.5	9.2	9.0	8.8	7.9	7.7	7.0	7.0
	128	9.3	9.0	9.1	8.7	7.7	7.5	7.1	6.9
	132	9.0	8.8	8.8	8.5	7.4	7.3	6.8	6.7
	136	8.6	8.5	8.4	8.2	7.0	7.0	6.4	6.4
5800	140	8.8	8.6	8.3	8.1	7.2	7.1	6.3	6.3
	149	7.4	7.5	7.4	7.1	5.8	6.0	5.3	5.3
	153	<b>7.6</b>	7.5	7.3	7.0	6.0	6.0	5.3	5.2
	157	7.5	7.1	7.0	6.6	5.9	5.6	5.0	4.8
	161	7.1	6.8	6.6	6.2	5.5	5.3	4.6	4.4
	165	7.0	6.7	6.6	6.3	5.4	5.2	4.6	4.5

Table 14: Test results conducted power measurement 802.11a

802.11n HT-20 / 802.11ac VHT-20										
maximum average conducted output power [dBm]										
Band [MHz]	Ch	MCS-0 6.5Mbps	MCS-1 13Mbps	MCS-2 19.5Mbps	MCS-3 26Mbps	MCS-4 39Mbps	MCS-5 52Mbps	MCS-6 58.5Mbps	MCS-7 65Mbps	MCS-8 78Mbps
5200	36	8.4	7.7	7.5	7.1	6.4	6.0	5.6	5.3	
	40	8.4	7.6	7.4	7.1	6.4	5.9	5.5	5.3	
	44	8.3	7.7	7.5	7.0	6.3	6.0	5.6	5.2	
	48	8.4	7.8	7.5	7.2	6.4	6.1	5.6	5.4	
5300	52	8.4	8.1	7.8	7.6	6.2	6.4	6.0	5.8	
	56	8.5	8.0	7.8	7.5	6.5	6.3	5.9	5.7	
	60	8.4	8.1	7.9	7.5	6.4	6.4	6.1	5.7	
	64	8.5	8.2	8.0	7.6	6.5	6.5	6.1	5.8	
5600	100	9.1	8.3	7.9	7.7	6.8	6.6	6.0	5.9	
	104	8.9	8.6	8.0	7.8	6.8	6.9	6.1	6.1	
	108	9.2	8.4	8.2	7.8	7.0	6.7	6.3	6.0	
	112	9.3	8.6	8.4	7.9	6.8	6.9	6.5	6.1	
	116	9.3	8.8	8.5	7.9	7.1	7.1	6.6	6.1	
	120	9.4	9.3	9.0	8.8	7.5	7.6	7.1	7.0	
	124	9.4	9.1	8.8	8.7	7.5	7.4	6.9	6.9	
	128	9.3	8.9	8.9	8.6	7.3	7.2	7.0	6.8	
	132	9.4	8.7	8.6	8.4	7.0	7.0	6.7	6.6	
	136	9.3	8.4	8.2	8.1	6.6	6.7	6.3	6.3	
140	9.2	8.5	8.1	8.0	6.8	6.8	6.2	6.2		
5800	149	7.6	7.4	7.1	7.1	5.4	5.8	5.2	5.2	
	153	7.6	7.3	7.1	6.9	5.6	5.7	5.2	5.1	
	157	7.4	7.0	6.8	6.5	5.5	5.3	4.9	4.7	
	161	7.3	6.7	6.4	6.1	5.1	5.1	4.5	4.3	
	165	7.1	6.6	6.4	6.2	5.0	4.9	4.5	4.4	

Table 15: Test results conducted power measurement 802.11n HT-20 / 802.11ac VHT-20

802.11n HT-40 / 802.11ac VHT-40											
maximum average conducted output power [dBm]											
Band [MHz]	Ch	MCS-0 13.5Mbps	MCS-1 27Mbps	MCS-2 40.5Mbps	MCS-3 54Mbps	MCS-4 81Mbps	MCS-5 108Mbps	MCS-6 121.5Mbps	MCS-7 135Mbps	MCS-8 162Mbps	MCS-9 180Mbps
5200	38	6.9	6.2	5.7	5.3	4.6	3.9	3.7	3.1		
	46	6.9	6.2	5.6	5.2	4.6	4.1	3.6	3.5		
5300	54	8.6	7.9	7.4	7.3	7	6.4	5.7	5.5		
	62	8.4	7.7	7.2	7.1	6.8	6.2	5.5	5.3		
5600	102	9.9	9.2	8.7	8.6	8.3	7.7	7	6.8		
	110	10.5	9.8	9.3	9.2	8.9	8.3	7.6	7.3		
	118	10.7	10	9.4	9.4	9.1	8.4	7.7	7.6		
	126	<b>10.8</b>	10.1	9.6	9.4	9.2	8.6	7.9	7.7		
134	10.4	9.7	9.2	9.1	8.8	8.2	7.5	7.3			
5800	151	9.5	8.8	8.3	8.2	7.9	7.3	6.6	6.4		
	159	8.5	7.8	7.3	7.2	6.9	6.3	5.6	5.4		

Table 16: Test results conducted power measurement 802.11n HT-40 / 802.11ac VHT-40

## 7.1.2 Standalone SAR Test Exclusion

Standalone SAR test exclusion considerations for <b>Body worn</b> position						
Communication system	freq. (MHz)	distance (mm)	$P_{avg}^*$ (dBm)	$P_{avg}^*$ (mW)	threshold <sub>1-g</sub> comparison value	SAR test exclusion
WLAN 2450	2450	0	14.2	26.3	8.2	no
WLAN 5.2 GHz	5200	0	10.3	10.7	4.9	no
WLAN 5.3 GHz	5300	0	10.4	11.0	5.0	no
WLAN 5.6 GHz	5600	0	11.4	13.8	6.5	no
WLAN 5.8 GHz	5800	0	9.4	8.7	4.2	no
Bluetooth 2450	2450	0	-5.9	0.26	0.1	yes

Table 17: Standalone SAR test exclusion considerations in **body position**

$P_{avg}^*$  - maximum possible output power declared by manufacturer

The **1-g SAR test exclusion thresholds** for 100 MHz to 6 GHz at *test separation distances*  $\leq 50$  mm are determined by:

$[(\text{max. power of channel, including tune-up tolerance, mW}) / (\text{min. test separation distance, mm})] \cdot [\sqrt{f(\text{GHz})}] \leq 3.0$  for 1-g SAR, where:

- $f(\text{GHz})$  is the RF channel transmit frequency in GHz
- Power and distance are rounded to the nearest mW and mm before calculation
- The result is rounded to one decimal place for comparison
- When the minimum test separation distance is  $< 5$  mm, a distance of 5 mm is applied to determine SAR test exclusion

## 7.2 SAR test results

### 7.2.1 Results overview

measured / extrapolated SAR numbers - Body worn - WLAN 2450 MHz												
Ch.	Freq. (MHz)	test cond.	Position	cond. P <sub>max</sub> (dBm)		SAR <sub>1q</sub> results(W/kg)		SAR <sub>10g</sub> (W/kg)		power drift (dB)	liquid (°C)	dist. (mm)
				declared**	meas.	meas.	extrap.	meas.	extrap.			
6	2437	1Mbit/s	rear	14.2	12.3	0.030	0.047	0.002	0.004	-0.190	21.4	0
6	2437	1Mbit/s	top	14.2	12.3	0.014	0.022	0.007	0.011	-0.150	21.4	0
6	2437	1Mbit/s	bottom	14.2	12.3	0.003	0.004	0.002	0.003	-0.120	21.4	0
6	2437	1Mbit/s	left	14.2	12.3	<b>0.062</b>	<b>0.096</b>	0.026	0.040	-0.080	21.4	0
6	2437	1Mbit/s	right	14.2	12.3	0.003	0.005	0.002	0.004	-0.190	21.4	0

Table 18: Test results body worn SAR WLAN 2450 MHz (see max. SAR plot in Annex B.1: WLAN 2450MHz page 36)

\*\* - maximum possible output power declared by manufacturer

measured / extrapolated SAR numbers - Body worn - WLAN 5 GHz												
Ch.	Freq. (MHz)	test cond.	Position	cond. P <sub>max</sub> (dBm)		SAR <sub>1q</sub> results(W/kg)		SAR <sub>10g</sub> (W/kg)		power drift (dB)	liquid (°C)	dist. (mm)
				declared**	meas.	meas.	extrap.	meas.	extrap.			
48	5240	6Mbit/s	rear	10.3	8.4	0.008	0.013	0.005	0.009	-0.160	21.7	0
48	5240	6Mbit/s	top	10.3	8.4	0.035	0.054	0.014	0.022	-0.120	21.7	0
48	5240	6Mbit/s	bottom	10.3	8.4	0.009	0.014	0.006	0.010	-0.180	21.7	0
48	5240	6Mbit/s	left	10.3	8.4	0.009	0.014	0.007	0.011	-0.140	21.7	0
48	5240	6Mbit/s	right	10.3	8.4	0.009	0.014	0.007	0.010	-0.160	21.7	0
64	5320	6Mbit/s	rear	10.4	8.5	0.008	0.012	0.055	0.085	-0.100	21.9	0
64	5320	6Mbit/s	top	10.4	8.5	0.031	0.048	0.015	0.023	-0.120	21.9	0
64	5320	6Mbit/s	bottom	10.4	8.5	0.009	0.013	0.006	0.010	-0.190	21.9	0
64	5320	6Mbit/s	left	10.4	8.5	0.013	0.020	0.006	0.010	-0.120	21.9	0
64	5320	6Mbit/s	right	10.4	8.5	0.007	0.010	0.005	0.007	-0.190	21.9	0
120	5600	6Mbit/s	rear	11.4	9.5	0.012	0.019	0.008	0.013	-0.140	21.9	0
120	5600	6Mbit/s	top	11.4	9.5	<b>0.094</b>	<b>0.146</b>	0.040	0.062	-0.180	21.9	0
120	5600	6Mbit/s	bottom	11.4	9.5	0.010	0.015	0.007	0.010	-0.150	21.9	0
120	5600	6Mbit/s	left	11.4	9.5	0.045	0.070	0.018	0.028	0.100	21.9	0
120	5600	6Mbit/s	right	11.4	9.5	0.008	0.012	0.005	0.008	-0.190	21.9	0
153	5765	6Mbit/s	rear	9.4	7.6	0.009	0.014	0.007	0.010	-0.190	21.6	0
153	5765	6Mbit/s	top	9.4	7.6	0.031	0.047	0.014	0.021	-0.170	21.6	0
153	5765	6Mbit/s	bottom	9.4	7.6	0.009	0.014	0.006	0.010	-0.170	21.6	0
153	5765	6Mbit/s	left	9.4	7.6	0.046	0.070	0.019	0.029	-0.170	21.6	0
153	5765	6Mbit/s	right	9.4	7.6	0.004	0.006	0.002	0.003	-0.140	21.6	0

Table 19: Test results body worn SAR WLAN 5 GHz (see max. SAR plot in Annex B.2: WLAN 5GHz page 37)

\*\* - maximum possible output power declared by manufacturer

### 7.2.2 General description of test procedures

- Test positions as described in the tables above are in accordance with the specified test standard.
- WLAN was tested in 802.11a/b mode with 1 MBit/s and 6 MBit/s. According to KDB 248227 the SAR testing for 802.11g/n is not required since the maximum power of 802.11g/n is less ¼ dB higher than maximum power of 802.11a/b.
- Required WLAN test channels were selected according to KDB 248227

## 8 Test equipment and ancillaries used for tests

To simplify the identification of the test equipment and/or ancillaries which were used, the reporting of the relevant test cases only refer to the test item number as specified in the table below.

Equipment	Type	Manufacturer	Serial No.	Last Calibration	Frequency (months)
Dosimetric E-Field Probe	EX3DV4	Schmid & Partner Engineering AG	3944	August 19, 2014	12
2450 MHz System Validation Dipole	D2450V2	Schmid & Partner Engineering AG	710	August 11, 2014	24
5 GHz System Validation Dipole	D5GHzV2	Schmid & Partner Engineering AG	1055	August 19, 2013	24
Data acquisition electronics	DAE3V1	Schmid & Partner Engineering AG	413	May 22, 2014	12
Software	DASY52 52.8.7	Schmid & Partner Engineering AG	---	N/A	--
Phantom ELI 4.0	QDOVA0 01BA	Schmid & Partner Engineering AG	1046	N/A	--
Network Analyser 300 kHz to 6 GHz	8753ES	Hewlett Packard)*	US39174436	January 28, 2014	24
Dielectric Probe Kit	85070C	Hewlett Packard	US99360146	N/A	12
Signal Generator	8671B	Hewlett Packard	2823A00656	January 22, 2014	24
Amplifier	25S1G4 (25 Watt)	Amplifier Reasearch	20452	N/A	--
Power Meter	NRP	Rohde & Schwarz	101367	January 21, 2014	24
Power Meter Sensor	NRP Z22	Rohde & Schwarz	100227	January 21, 2014	12
Power Meter Sensor	NRP Z22	Rohde & Schwarz	100234	January 21, 2014	12
Directional Coupler	778D	Hewlett Packard	19171	January 21, 2014	12

)\* : Network analyzer probe calibration against air, distilled water and a shorting block performed before measuring liquid parameters.

## 9 Observations

No observations exceeding those reported with the single test cases have been made.

## Annex A: System performance check

Date/Time: 16.10.2014 18:24:50

### SystemPerformanceCheck-D2450 body 2014-10-16

**DUT: Dipole 2450 MHz; Type: D2450V2; Serial: 710**

Communication System: UID 0, CW (0); Communication System Band: D2450 (2450.0 MHz); Frequency: 2450 MHz; Communication System PAR: 0 dB; PMF: 1

Medium parameters used:  $f = 2450$  MHz;  $\sigma = 2.013$  S/m;  $\epsilon_r = 50.889$ ;  $\rho = 1000$  kg/m<sup>3</sup>

Phantom section: Flat Section

Measurement Standard: DASYS

DASY5 Configuration:

- Probe: EX3DV4 - SN3944; ConvF(7.43, 7.43, 7.43); Calibrated: 19.08.2014;
- Sensor-Surface: 4mm (Mechanical Surface Detection),  $z = 1.0, 31.0$
- Electronics: DAE3 Sn413; Calibrated: 22.05.2014
- Phantom: ELI 4.0; Type: QDOVA001BA; Serial: 1046
- DASY52 52.8.7(1137); SEMCAD X 14.6.10(7164)

### MSL2450/d=10mm, Pin=1000 mW, dist=4.0mm/Area Scan (81x81x1):

Interpolated grid:  $dx=1.000$  mm,  $dy=1.000$  mm

Maximum value of SAR (interpolated) = 61.5 W/kg

### MSL2450/d=10mm, Pin=1000 mW, dist=4.0mm/Zoom Scan (7x7x7)/Cube 0:

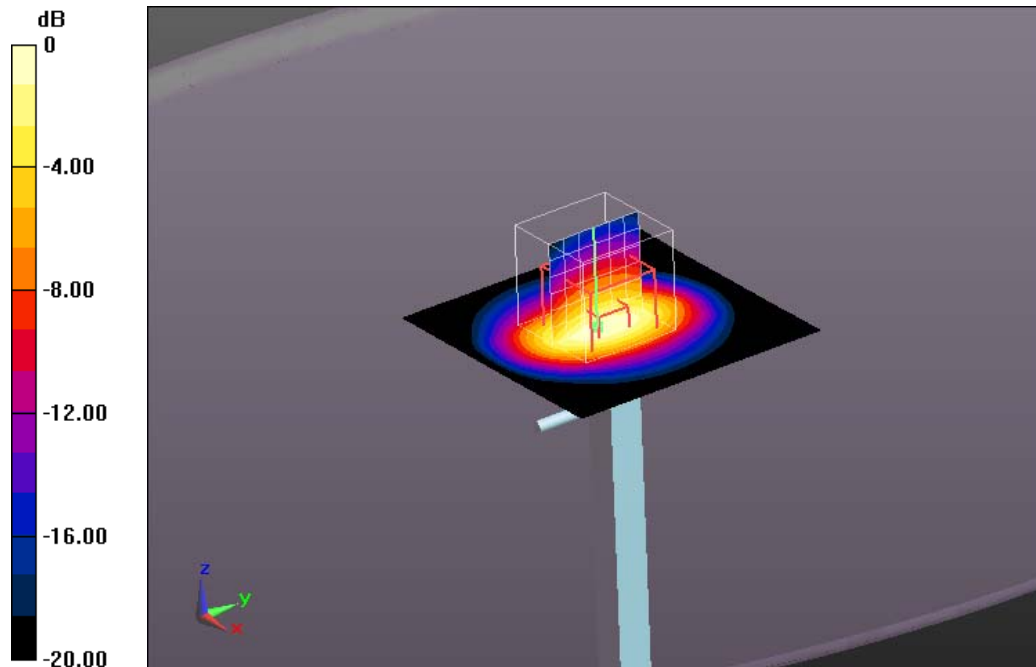
Measurement grid:  $dx=5$ mm,  $dy=5$ mm,  $dz=5$ mm

Reference Value = 172.2 V/m; Power Drift = -0.01 dB

Peak SAR (extrapolated) = 107 W/kg

**SAR(1 g) = 53.2 W/kg; SAR(10 g) = 24.8 W/kg**

Maximum value of SAR (measured) = 60.7 W/kg



0 dB = 60.7 W/kg = 17.83 dBW/kg

#### Additional information:

ambient temperature: 22.6°C; liquid temperature: 21.4°C

Date/Time: 21.10.2014 13:53:49

## SystemPerformanceCheck-D5GHz body 2014-10-21

**DUT: Dipole 5 GHz; Type: D5GHzV2; Serial: 1055**

Communication System: UID 0, CW (0); Communication System Band: D5GHz (5000.0 - 6000.0 MHz);

Frequency: 5200 MHz; Communication System PAR: 0 dB; PMF: 1

Medium parameters used:  $f = 5200$  MHz;  $\sigma = 5.171$  S/m;  $\epsilon_r = 49.434$ ;  $\rho = 1000$  kg/m<sup>3</sup>

Phantom section: Flat Section

Measurement Standard: DASYS5

DASY5 Configuration:

- Probe: EX3DV4 - SN3944; ConvF(4.56, 4.56, 4.56); Calibrated: 19.08.2014;
- Sensor-Surface: 2mm (Mechanical Surface Detection (Locations From Previous Scan Used)), Sensor-Surface: 2mm (Mechanical Surface Detection),  $z = 1.0, 23.0$
- Electronics: DAE3 Sn413; Calibrated: 22.05.2014
- Phantom: ELI 4.0; Type: QDOVA001BA; Serial: 1046
- DASY52 52.8.7(1137); SEMCAD X 14.6.10(7164)

### MSL 5GHz/d=10mm, Pin=100mW 5.2GHz/Area Scan (61x61x1): Interpolated grid:

$dx=1.000$  mm,  $dy=1.000$  mm

Maximum value of SAR (interpolated) = 17.5 W/kg

### MSL 5GHz/d=10mm, Pin=100mW 5.2GHz/Zoom Scan (7x7x12)/Cube 0:

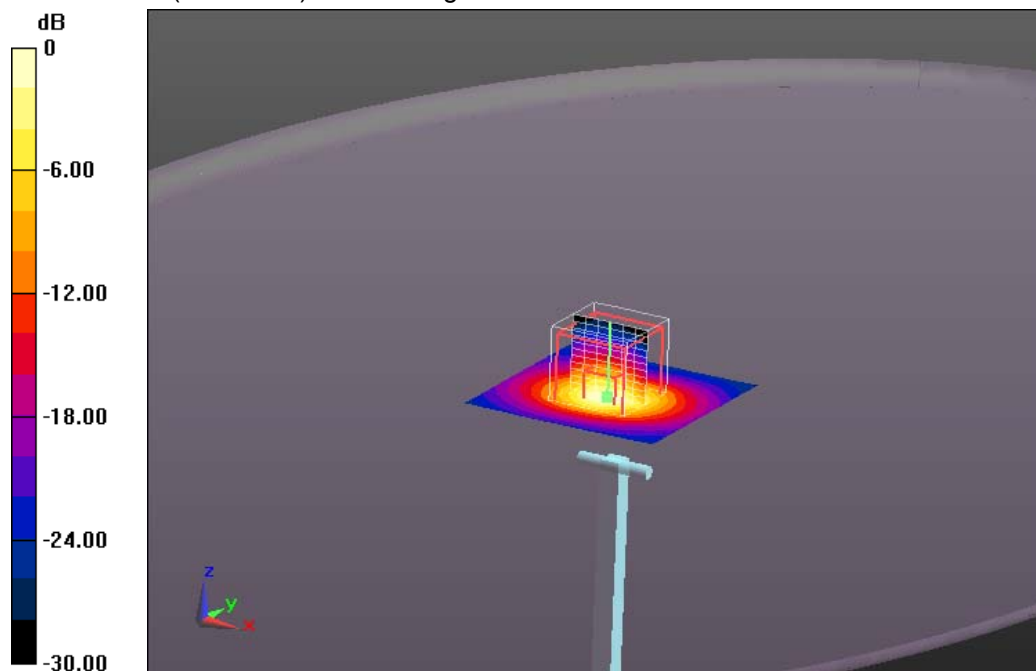
Measurement grid:  $dx=4$ mm,  $dy=4$ mm,  $dz=2$ mm

Reference Value = 59.195 V/m; Power Drift = -0.17 dB

Peak SAR (extrapolated) = 30.4 W/kg

**SAR(1 g) = 7.57 W/kg; SAR(10 g) = 2.14 W/kg**

Maximum value of SAR (measured) = 15.7 W/kg



0 dB = 15.7 W/kg = 11.96 dBW/kg

#### Additional information:

ambient temperature: 22.4°C; liquid temperature: 21.7°C



Date/Time: 24.10.2014 06:36:39

## SystemPerformanceCheck-D5GHz body 2014-10-24

**DUT: Dipole 5 GHz; Type: D5GHzV2; Serial: 1055**

Communication System: UID 0, CW (0); Communication System Band: D5GHz (5000.0 - 6000.0 MHz);

Frequency: 5200 MHz; Communication System PAR: 0 dB; PMF: 1

Medium parameters used:  $f = 5200$  MHz;  $\sigma = 5.171$  S/m;  $\epsilon_r = 49.434$ ;  $\rho = 1000$  kg/m<sup>3</sup>

Phantom section: Flat Section

Measurement Standard: DASYS

DASY5 Configuration:

- Probe: EX3DV4 - SN3944; ConvF(4.56, 4.56, 4.56); Calibrated: 19.08.2014;
- Sensor-Surface: 2mm (Mechanical Surface Detection),  $z = 1.0, 23.0$
- Electronics: DAE3 Sn413; Calibrated: 22.05.2014
- Phantom: ELI 4.0; Type: QDOVA001BA; Serial: 1046
- DASYS52 52.8.7(1137); SEMCAD X 14.6.10(7164)

### MSL 5GHz/d=10mm, Pin=100mW 5.2GHz/Area Scan (61x61x1): Interpolated grid:

$dx=1.000$  mm,  $dy=1.000$  mm

Maximum value of SAR (interpolated) = 18.2 W/kg

### MSL 5GHz/d=10mm, Pin=100mW 5.2GHz/Zoom Scan (7x7x12)/Cube 0:

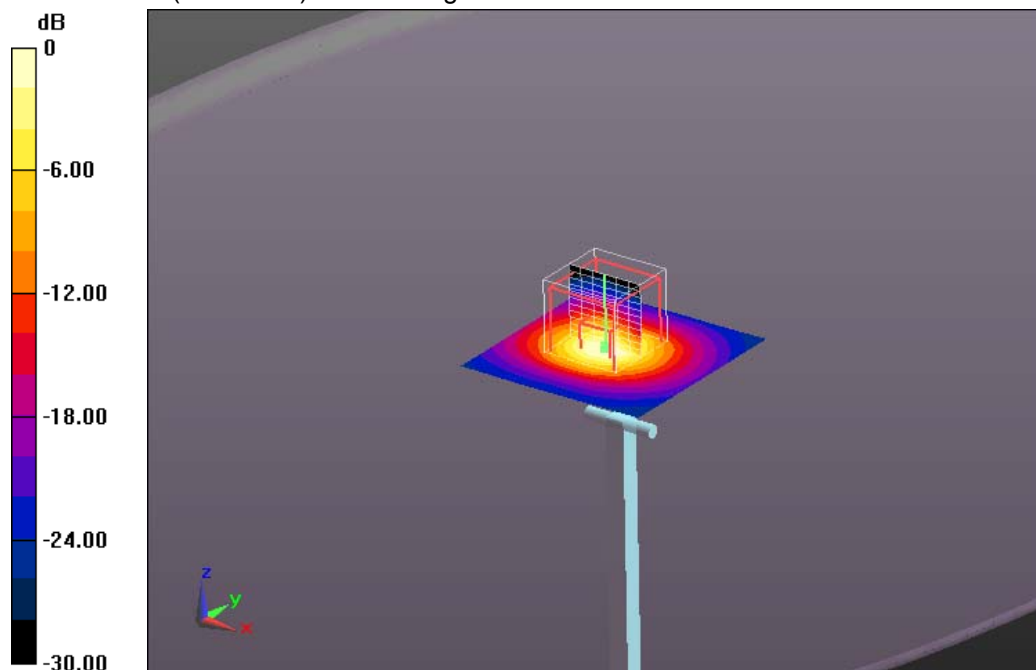
Measurement grid:  $dx=4$ mm,  $dy=4$ mm,  $dz=2$ mm

Reference Value = 55.720 V/m; Power Drift = -0.10 dB

Peak SAR (extrapolated) = 31.7 W/kg

**SAR(1 g) = 7.67 W/kg; SAR(10 g) = 2.15 W/kg**

Maximum value of SAR (measured) = 16.3 W/kg



0 dB = 16.3 W/kg = 12.12 dBW/kg

#### Additional information:

ambient temperature: 22.6°C; liquid temperature: 21.9°C

Date/Time: 24.10.2014 07:16:29

## SystemPerformanceCheck-D5GHz body 2014-10-24

**DUT: Dipole 5 GHz; Type: D5GHzV2; Serial: 1055**

Communication System: UID 0, CW (0); Communication System Band: D5GHz (5000.0 - 6000.0 MHz);

Frequency: 5500 MHz; Communication System PAR: 0 dB; PMF: 1

Medium parameters used:  $f = 5500$  MHz;  $\sigma = 5.563$  S/m;  $\epsilon_r = 48.938$ ;  $\rho = 1000$  kg/m<sup>3</sup>

Phantom section: Flat Section

Measurement Standard: DASYS

DASY5 Configuration:

- Probe: EX3DV4 - SN3944; ConvF(4.15, 4.15, 4.15); Calibrated: 19.08.2014;
- Sensor-Surface: 2mm (Mechanical Surface Detection (Locations From Previous Scan Used)), Sensor-Surface: 2mm (Mechanical Surface Detection),  $z = 1.0, 23.0$
- Electronics: DAE3 Sn413; Calibrated: 22.05.2014
- Phantom: ELI 4.0; Type: QDOVA001BA; Serial: 1046
- DASYS2 52.8.7(1137); SEMCAD X 14.6.10(7164)

### MSL 5GHz/d=10mm, Pin=100mW 5.5GHz/Area Scan (61x61x1): Interpolated grid:

$dx=1.000$  mm,  $dy=1.000$  mm

Maximum value of SAR (interpolated) = 17.7 W/kg

### MSL 5GHz/d=10mm, Pin=100mW 5.5GHz/Zoom Scan (9x9x12)/Cube 0:

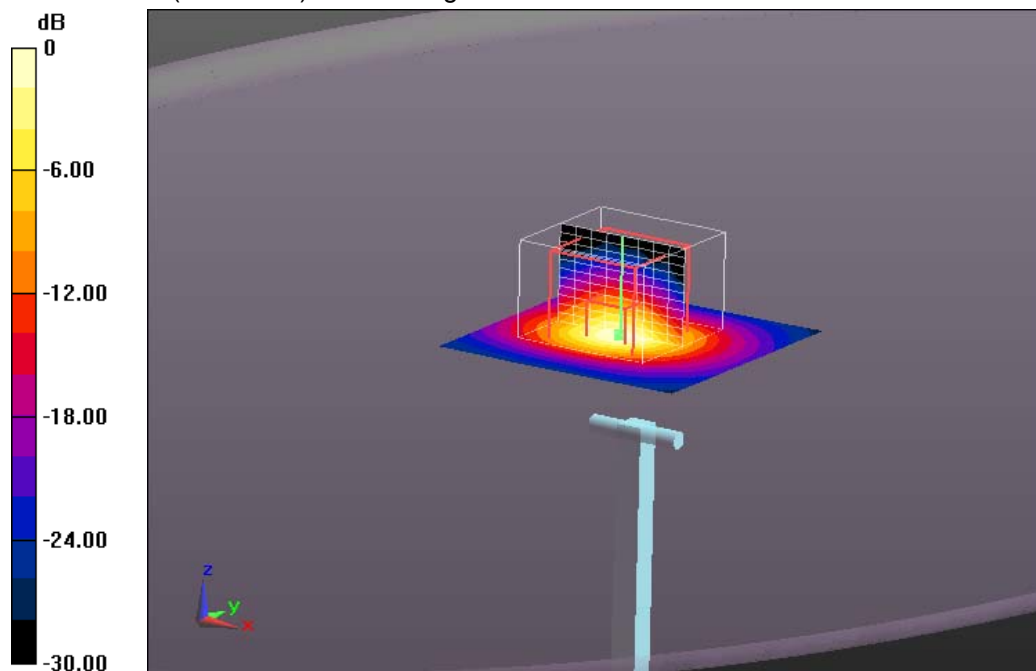
Measurement grid:  $dx=4$ mm,  $dy=4$ mm,  $dz=2$ mm

Reference Value = 53.696 V/m; Power Drift = 0.01 dB

Peak SAR (extrapolated) = 34.6 W/kg

**SAR(1 g) = 8.08 W/kg; SAR(10 g) = 2.24 W/kg**

Maximum value of SAR (measured) = 17.3 W/kg



0 dB = 17.3 W/kg = 12.38 dBW/kg

#### Additional information:

ambient temperature: 22.6°C; liquid temperature: 21.9°C

Date/Time: 28.10.2014 11:35:02

### SystemPerformanceCheck-D5GHz body 2014-10-28

**DUT: Dipole 5 GHz; Type: D5GHzV2; Serial: 1055**

Communication System: UID 0, CW (0); Communication System Band: D5GHz (5000.0 - 6000.0 MHz);

Frequency: 5800 MHz; Communication System PAR: 0 dB; PMF: 1

Medium parameters used:  $f = 5800$  MHz;  $\sigma = 5.994$  S/m;  $\epsilon_r = 48.48$ ;  $\rho = 1000$  kg/m<sup>3</sup>

Phantom section: Flat Section

Measurement Standard: DASY5

DASY5 Configuration:

- Probe: EX3DV4 - SN3944; ConvF(4.02, 4.02, 4.02); Calibrated: 19.08.2014;
- Sensor-Surface: 2mm (Mechanical Surface Detection (Locations From Previous Scan Used)), Sensor-Surface: 2mm (Mechanical Surface Detection),  $z = 1.0, 23.0$
- Electronics: DAE3 Sn413; Calibrated: 22.05.2014
- Phantom: ELI 4.0; Type: QDOVA001BA; Serial: 1046
- DASY52 52.8.7(1137); SEMCAD X 14.6.10(7164)

### MSL 5GHz/d=10mm, Pin=100mW 5.8GHz/Area Scan (61x61x1): Interpolated grid:

$dx=1.000$  mm,  $dy=1.000$  mm

Maximum value of SAR (interpolated) = 18.1 W/kg

### MSL 5GHz/d=10mm, Pin=100mW 5.8GHz/Zoom Scan (7x7x12)/Cube 0:

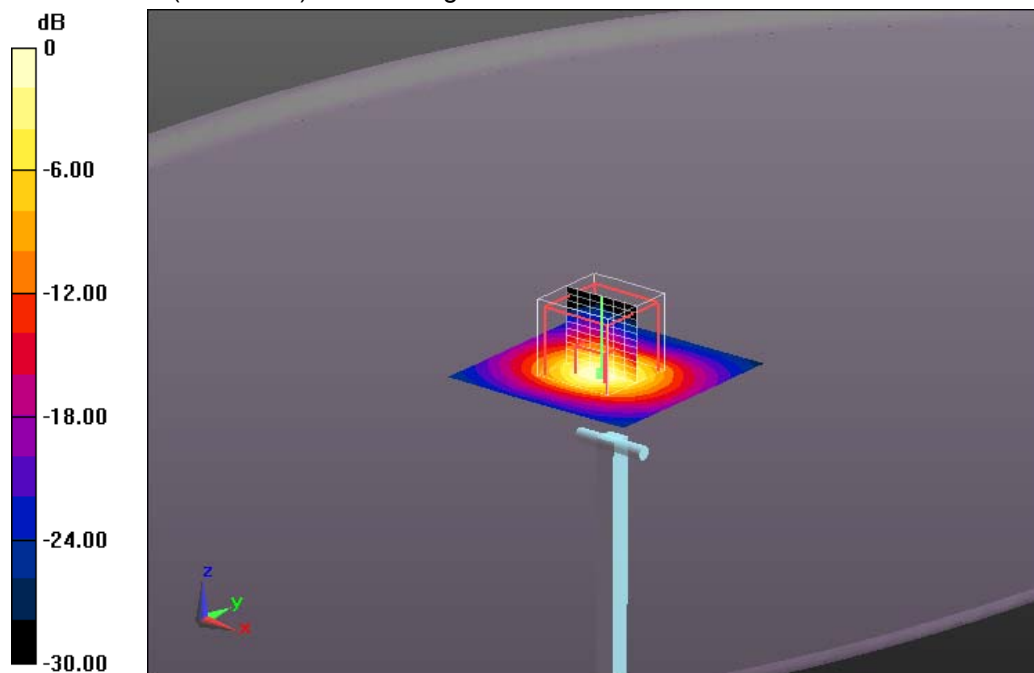
Measurement grid:  $dx=4$ mm,  $dy=4$ mm,  $dz=2$ mm

Reference Value = 56.775 V/m; Power Drift = 0.03 dB

Peak SAR (extrapolated) = 33.0 W/kg

**SAR(1 g) = 7.7 W/kg; SAR(10 g) = 2.14 W/kg**

Maximum value of SAR (measured) = 16.5 W/kg



0 dB = 16.5 W/kg = 12.17 dBW/kg

#### Additional information:

ambient temperature: 22.8°C; liquid temperature: 21.6°C

## Annex B: DASY5 measurement results

### Annex B.1: WLAN 2450MHz

Date/Time: 16.10.2014 11:08:14

#### FCC\_EN62209-2 WLAN2450 body worn

**DUT: eSolution; Type: SDIS1; Serial: #4**

Communication System: UID 0, WLAN 2450 (0); Communication System Band: 2.4 GHz; Frequency: 2437 MHz; Communication System PAR: 0 dB; PMF: 1

Medium parameters used:  $f = 2437$  MHz;  $\sigma = 2.003$  S/m;  $\epsilon_r = 50.948$ ;  $\rho = 1000$  kg/m<sup>3</sup>

Phantom section: Flat Section

Measurement Standard: DASY5

DASY5 Configuration:

- Probe: EX3DV4 - SN3944; ConvF(7.43, 7.43, 7.43); Calibrated: 19.08.2014;
- Sensor-Surface: 4mm (Mechanical Surface Detection (Locations From Previous Scan Used)), Sensor-Surface: 4mm (Mechanical Surface Detection),  $z = 1.0, 31.0$
- Electronics: DAE3 Sn413; Calibrated: 22.05.2014
- Phantom: ELI 4.0; Type: QDOVA001BA; Serial: 1046
- DASY52 52.8.7(1137); SEMCAD X 14.6.10(7164)

**MSL2450/Left Middle 0mm/Area Scan (121x361x1):** Interpolated grid:  $dx=1.000$  mm,  $dy=1.000$  mm

Maximum value of SAR (interpolated) = 0.0845 W/kg

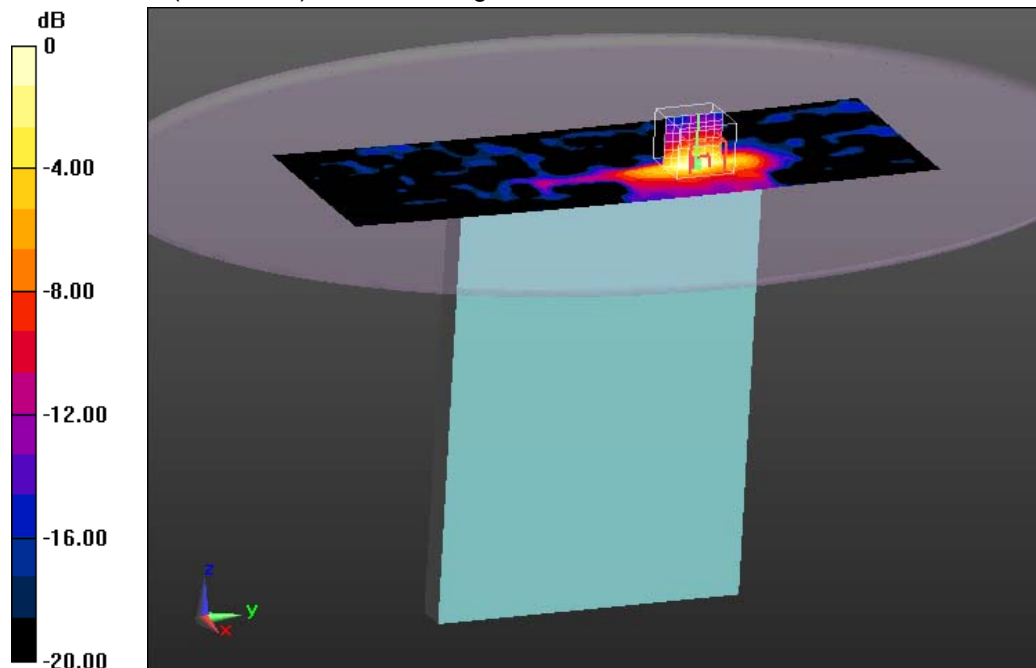
**MSL2450/Left Middle 0mm/Zoom Scan (8x8x7)/Cube 0:** Measurement grid:  $dx=5$ mm,  $dy=5$ mm,  $dz=5$ mm

Reference Value = 5.923 V/m; Power Drift = -0.08 dB

Peak SAR (extrapolated) = 0.157 W/kg

**SAR(1 g) = 0.062 W/kg; SAR(10 g) = 0.026 W/kg**

Maximum value of SAR (measured) = 0.0760 W/kg



0 dB = 0.0760 W/kg = -11.19 dBW/kg

#### Additional information:

position or distance of DUT to SAM: 0mm

ambient temperature: 22.6°C; liquid temperature: 21.4°C

## Annex B.2: WLAN 5GHz

Date/Time: 21.10.2014 08:47:49

### FCC\_EN62209-2 WLAN5GHz body worn

**DUT: eSolution; Type: SDIS1; Serial: #4**

Communication System: UID 0, WLAN 5GHz (0); Communication System Band: 5 GHz Band; Frequency: 5240 MHz; Communication System PAR: 0 dB; PMF: 1

Medium parameters used:  $f = 5240$  MHz;  $\sigma = 5.234$  S/m;  $\epsilon_r = 49.323$ ;  $\rho = 1000$  kg/m<sup>3</sup>

Phantom section: Flat Section

Measurement Standard: DASYS5

DASY5 Configuration:

- Probe: EX3DV4 - SN3944; ConvF(4.56, 4.56, 4.56); Calibrated: 19.08.2014;
- Sensor-Surface: 2mm (Mechanical Surface Detection (Locations From Previous Scan Used)), Sensor-Surface: 2mm (Mechanical Surface Detection),  $z = 1.0, 23.0$
- Electronics: DAE3 Sn413; Calibrated: 22.05.2014
- Phantom: ELI 4.0; Type: QDOVA001BA; Serial: 1046
- DASYS5 52.8.7(1137); SEMCAD X 14.6.10(7164)

**MSL/Top Ch 48 - 0mm/Area Scan (261x361x1):** Interpolated grid:  $dx=1.000$  mm,  $dy=1.000$  mm

Maximum value of SAR (interpolated) = 0.0697 W/kg

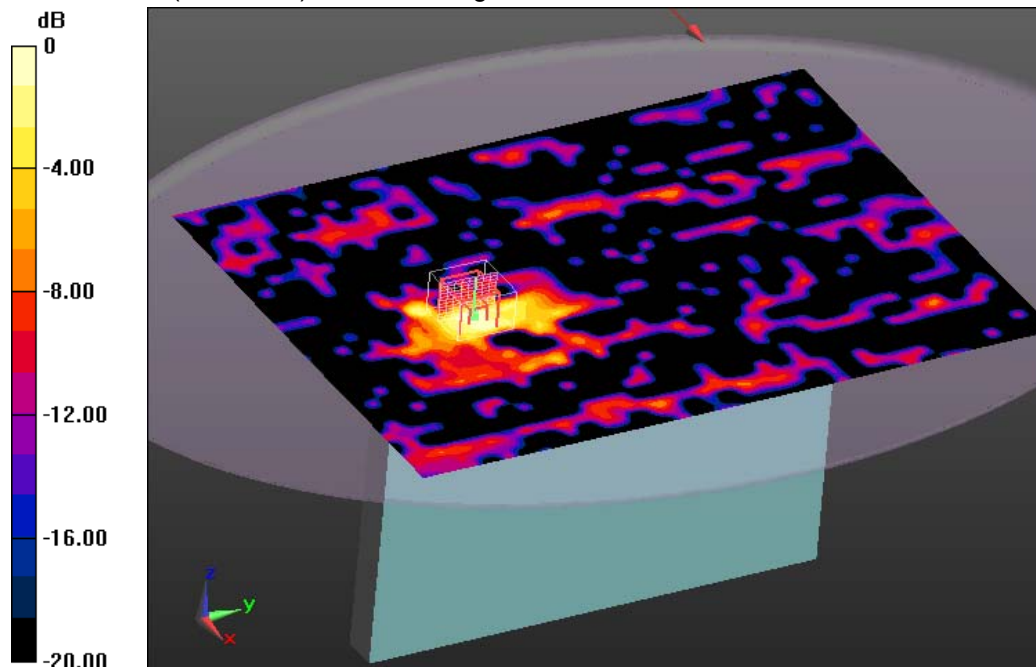
**MSL/Top Ch 48 - 0mm/Zoom Scan (9x9x12)/Cube 0:** Measurement grid:  $dx=4$ mm,  $dy=4$ mm,  $dz=2$ mm

Reference Value = 3.322 V/m; Power Drift = -0.12 dB

Peak SAR (extrapolated) = 0.147 W/kg

**SAR(1 g) = 0.035 W/kg; SAR(10 g) = 0.014 W/kg**

Maximum value of SAR (measured) = 0.0599 W/kg



0 dB = 0.0599 W/kg = -12.23 dBW/kg

#### Additional information:

position or distance of DUT to SAM: 0mm

ambient temperature: 22.4°C; liquid temperature: 21.7°C

Date/Time: 24.10.2014 15:07:50

## FCC\_EN62209-2 WLAN5GHz body worn

**DUT: eSolution; Type: SDIS1; Serial: #4**

Communication System: UID 0, WLAN 5GHz (0); Communication System Band: 5 GHz Band; Frequency: 5320 MHz; Communication System PAR: 0 dB; PMF: 1

Medium parameters used:  $f = 5320$  MHz;  $\sigma = 5.326$  S/m;  $\epsilon_r = 49.193$ ;  $\rho = 1000$  kg/m<sup>3</sup>

Phantom section: Flat Section

Measurement Standard: DASYS

DASY5 Configuration:

- Probe: EX3DV4 - SN3944; ConvF(4.4, 4.4, 4.4); Calibrated: 19.08.2014;
- Sensor-Surface: 2mm (Mechanical Surface Detection (Locations From Previous Scan Used)), Sensor-Surface: 2mm (Mechanical Surface Detection),  $z = 1.0, 23.0$
- Electronics: DAE3 Sn413; Calibrated: 22.05.2014
- Phantom: ELI 4.0; Type: QDOVA001BA; Serial: 1046
- DASY52 52.8.7(1137); SEMCAD X 14.6.10(7164)

**MSL/top Ch 64 - 0mm/Area Scan (101x331x1):** Interpolated grid:  $dx=1.000$  mm,  $dy=1.000$  mm

Maximum value of SAR (interpolated) = 0.162 W/kg

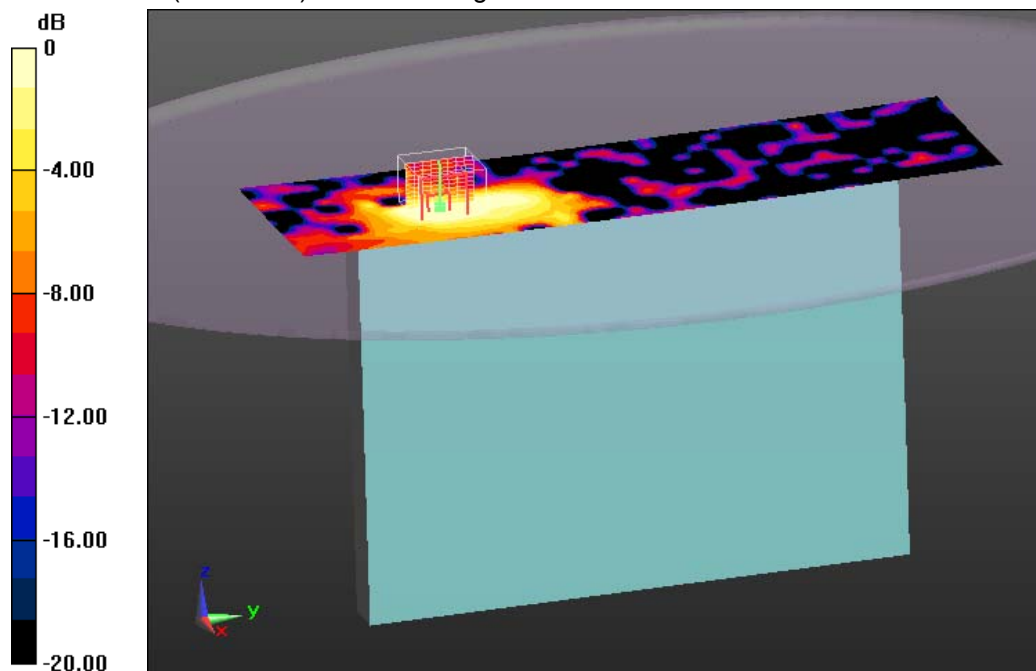
**MSL/top Ch 64 - 0mm/Zoom Scan (9x9x12)/Cube 0:** Measurement grid:  $dx=4$ mm,  $dy=4$ mm,  $dz=2$ mm

Reference Value = 5.140 V/m; Power Drift = -0.12 dB

Peak SAR (extrapolated) = 0.138 W/kg

**SAR(1 g) = 0.031 W/kg; SAR(10 g) = 0.015 W/kg**

Maximum value of SAR (measured) = 0.0530 W/kg



0 dB = 0.0530 W/kg = -12.76 dBW/kg

### Additional information:

position or distance of DUT to SAM: 0mm

ambient temperature: 22.6°C; liquid temperature: 21.9°C

Date/Time: 24.10.2014 18:28:11

## FCC\_EN62209-2 WLAN5GHz body worn

**DUT: eSolution; Type: SDIS1; Serial: #4**

Communication System: UID 0, WLAN 5GHz (0); Communication System Band: 5 GHz Band; Frequency: 5600 MHz; Communication System PAR: 0 dB; PMF: 1

Medium parameters used:  $f = 5600$  MHz;  $\sigma = 5.71$  S/m;  $\epsilon_r = 48.766$ ;  $\rho = 1000$  kg/m<sup>3</sup>

Phantom section: Flat Section

Measurement Standard: DASYS

DASY5 Configuration:

- Probe: EX3DV4 - SN3944; ConvF(4.06, 4.06, 4.06); Calibrated: 19.08.2014;
- Sensor-Surface: 2mm (Mechanical Surface Detection (Locations From Previous Scan Used)), Sensor-Surface: 2mm (Mechanical Surface Detection),  $z = 1.0, 23.0$
- Electronics: DAE3 Sn413; Calibrated: 22.05.2014
- Phantom: ELI 4.0; Type: QDOVA001BA; Serial: 1046
- DASYS2 52.8.7(1137); SEMCAD X 14.6.10(7164)

**MSL/top Ch 120 - 0mm/Area Scan (101x331x1):** Interpolated grid:  $dx=1.000$  mm,  $dy=1.000$  mm

Maximum value of SAR (interpolated) = 0.216 W/kg

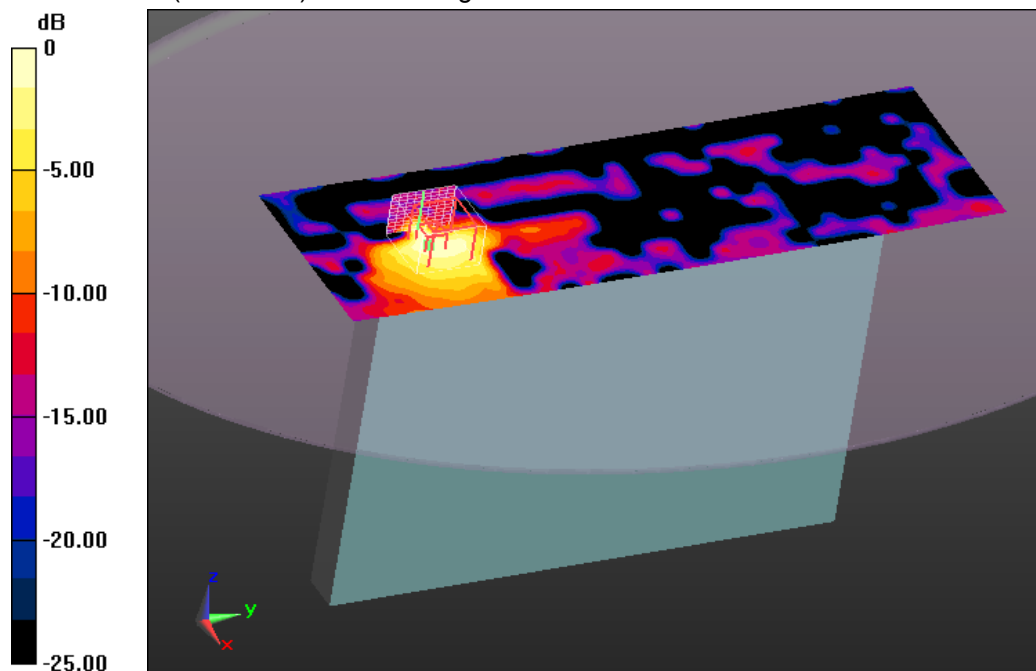
**MSL/top Ch 120 - 0mm/Zoom Scan (9x9x12)/Cube 0:** Measurement grid:  $dx=4$ mm,  $dy=4$ mm,  $dz=2$ mm

Reference Value = 6.049 V/m; Power Drift = -0.18 dB

Peak SAR (extrapolated) = 0.648 W/kg

**SAR(1 g) = 0.094 W/kg; SAR(10 g) = 0.040 W/kg**

Maximum value of SAR (measured) = 0.181 W/kg



0 dB = 0.181 W/kg = -7.42 dBW/kg

### Additional information:

position or distance of DUT to SAM: 0mm

ambient temperature: 22.6°C; liquid temperature: 21.9°C



Date/Time: 28.10.2014 16:58:38

## FCC\_EN62209-2 WLAN5GHz body worn

**DUT: eSolution; Type: SDIS1; Serial: #4**

Communication System: UID 0, WLAN 5GHz (0); Communication System Band: 5 GHz Band; Frequency: 5765 MHz; Communication System PAR: 0 dB; PMF: 1

Medium parameters used:  $f = 5765$  MHz;  $\sigma = 5.944$  S/m;  $\epsilon_r = 48.536$ ;  $\rho = 1000$  kg/m<sup>3</sup>

Phantom section: Flat Section

Measurement Standard: DASYS

DASY5 Configuration:

- Probe: EX3DV4 - SN3944; ConvF(4.02, 4.02, 4.02); Calibrated: 19.08.2014;
- Sensor-Surface: 2mm (Mechanical Surface Detection (Locations From Previous Scan Used)), Sensor-Surface: 2mm (Mechanical Surface Detection),  $z = 1.0, 23.0$
- Electronics: DAE3 Sn413; Calibrated: 22.05.2014
- Phantom: ELI 4.0; Type: QDOVA001BA; Serial: 1046
- DASYS2 52.8.7(1137); SEMCAD X 14.6.10(7164)

### MSL/Left Ch 153 - 0mm/Area Scan (81x231x1):

Interpolated grid:  $dx=1.000$  mm,  
 $dy=1.000$  mm

Maximum value of SAR (interpolated) = 0.0903 W/kg

### MSL/Left Ch 153 - 0mm/Zoom Scan (7x7x12)/Cube 0:

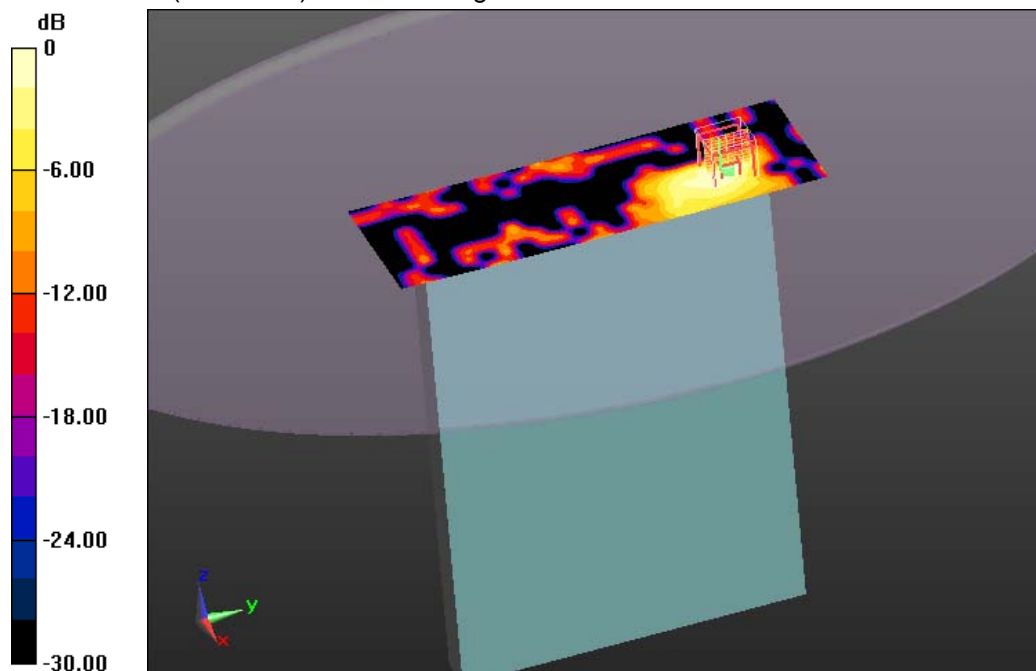
Measurement grid:  $dx=4$ mm,  
 $dy=4$ mm,  $dz=2$ mm

Reference Value = 4.241 V/m; Power Drift = 0.17 dB

Peak SAR (extrapolated) = 0.186 W/kg

**SAR(1 g) = 0.046 W/kg; SAR(10 g) = 0.019 W/kg**

Maximum value of SAR (measured) = 0.0906 W/kg



0 dB = 0.0906 W/kg = -10.43 dBW/kg

#### Additional information:

position or distance of DUT to SAM: 0mm

ambient temperature: 22.8°C; liquid temperature: 21.6°C



**Annex B.3: Liquid depth**

Photo 1: Liquid depth 2450 MHz body simulating liquid

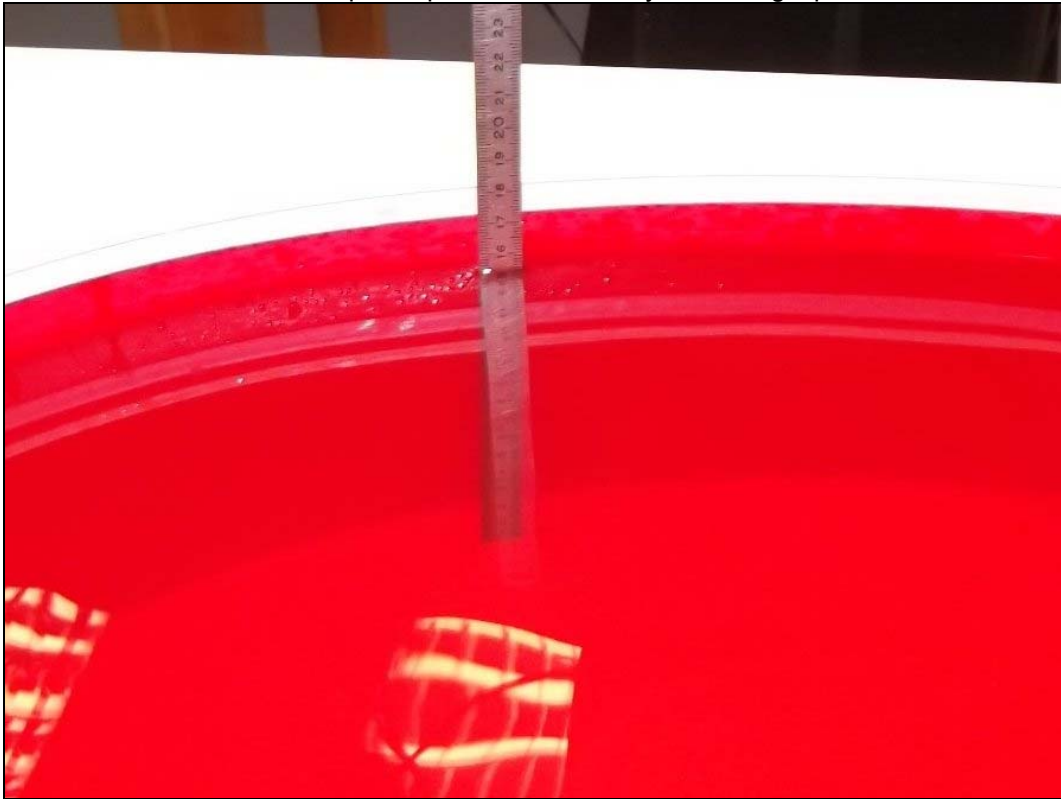
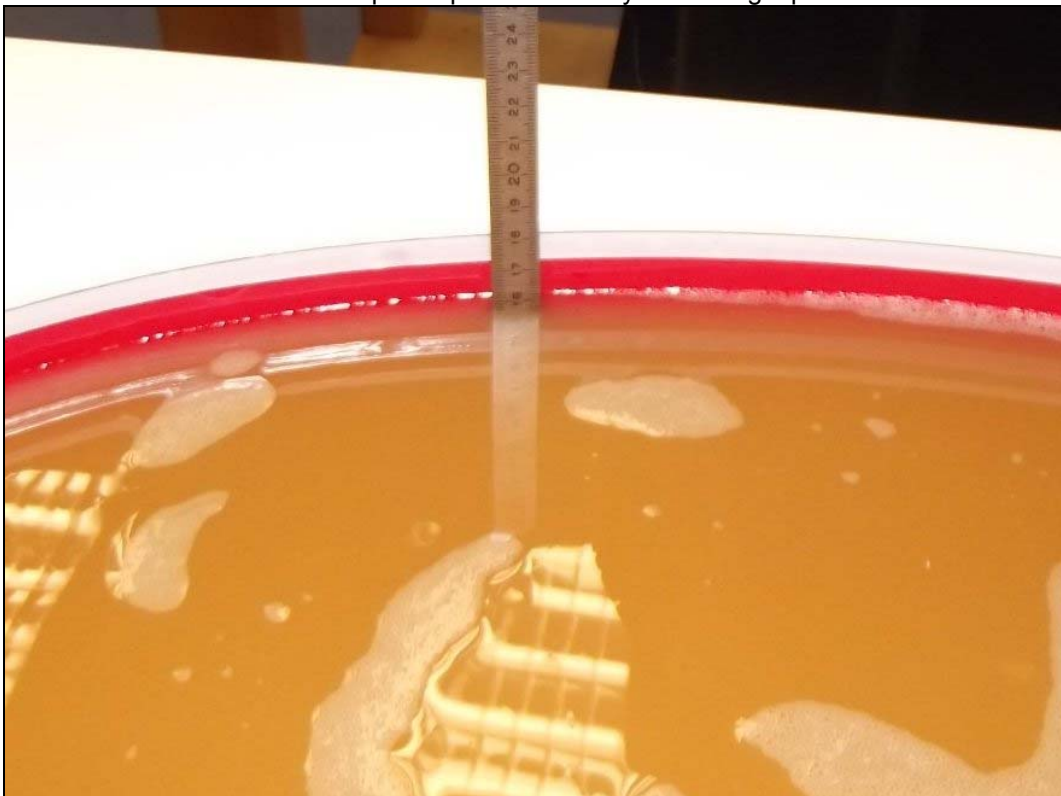


Photo 2: Liquid depth 5 GHz body simulating liquid



## **Annex C: Photo documentation**

Photo documentation is described in the additional document:

### **Appendix to test report no. 1-6160/13-01-19 Photo documentation**

## **Annex D: Calibration parameters**

Calibration parameters are described in the additional document:

### **Appendix to test report no. 1-6160/13-01-19 Calibration data, Phantom certificate and detail information of the DASY5 System**

## Annex E: RF Technical Brief Cover Sheet acc. to RSS-102 Annex A

1. COMPANY NUMBER: **7582A**
2. MODEL NUMBER: **SDIS1**
3. MANUFACTURER: **Fehler! Verweisquelle konnte nicht gefunden werden.**
4. TYPE OF EVALUATION:

SAR Evaluation: **Body-Worn Device**

- Multiple transmitters: Yes  No
- Evaluated against exposure limits: General Public Use  Controlled Use
- Duty cycle used in evaluation: 100 %
- Standard used for evaluation: RSS-102 Issue 4 (2010-03)
- SAR value: **0.146 W/kg.** Measured  Computed  Calculated

### Annex E.1: Declaration of RF Exposure Compliance

ATTESTATION: I attest that the information provided in Annex E: is correct; that a Technical Brief was prepared and the information it contains is correct; that the device evaluation was performed or supervised by me; that applicable measurement methods and evaluation methodologies have been followed and that the device meets the SAR and/or RF exposure limits of RSS-102.

Signature:

NAME : **Oleksandr Hnatovskiy**

TITLE : Dipl.-Ing. (FH)

COMPANY : CETECOM ICT Services GmbH

## Annex F: Document History

Version	Applied Changes	Date of Release
	Initial Release	2014-11-11

## Annex G: Further Information

### Glossary

BW	-	Bandwidth
DTS	-	Distributed Transmission System
DUT	-	Device under Test
EUT	-	Equipment under Test
FCC	-	Federal Communication Commission
FCC ID	-	Company Identifier at FCC
HW	-	Hardware
IC	-	Industry Canada
Inv. No.	-	Inventory number
LTE	-	Long Term Evolution
N/A	-	not applicable
PCE	-	Personal Consumption Expenditure
OET	-	Office of Engineering and Technology
RB	-	resource block(s)
SAR	-	Specific Absorption Rate
S/N	-	Serial Number
SPLSR <sub>i</sub>	-	SAR-to-(peak-locations spacing) ratio
SW	-	Software
UNII	-	Unlicensed National Information Infrastructure