

System Check_Head_1750MHz

DUT: D1750V2 - SN1112

Communication System: CW; Frequency: 1750.000 MHz; Duty Cycle: 1:1
Medium: HSL_1750_230515 Medium parameters used: $f=1750.000$ MHz; $\sigma=1.38$ S/m; $\epsilon_r=40.4$

Ambient Temperature: 23.3°C; Liquid Temperature: 22.3°C

DASY6 Configuration:

- Probe: EX3DV4 - SN3728; ConvF(8.06, 8.06, 8.06); Calibrated: 2023-03-22
- Sensor-Surface: 1.4 mm
- Electronics: DAE4 Sn1424; Calibrated: 2023-01-19
- Phantom: Twin-SAM V4.0 (30deg probe tilt); Serial: 1488; Section: Flat
- Measurement Software: 16.2.4.2448
- UID: , 0--

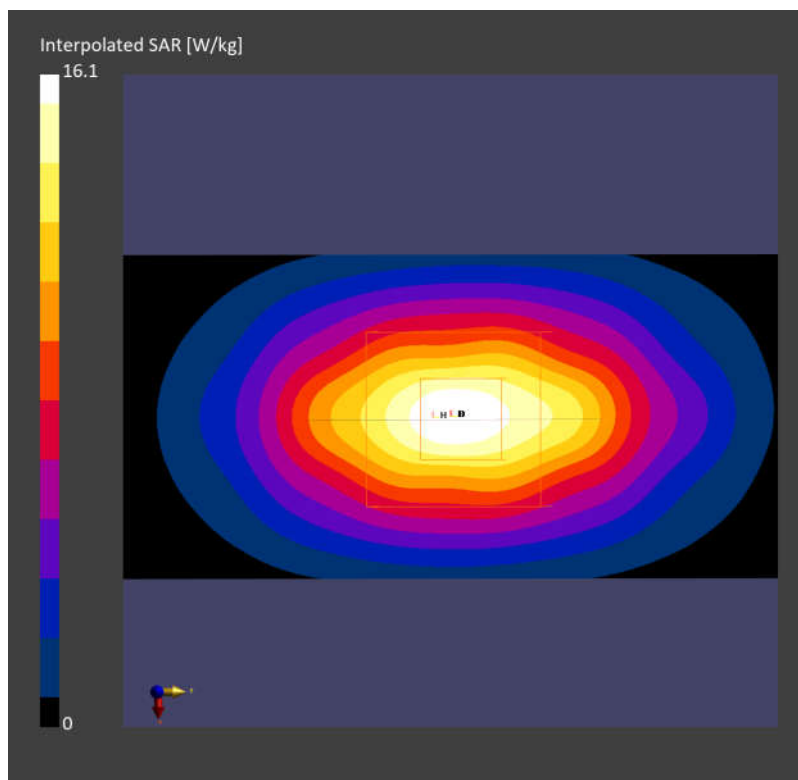
Area Scan (40.0 mm x 90.0 mm): Measurement Grid: 10.0 mm x 15.0 mm

SAR (1g) = 9.15 W/kg; SAR (10g) = 5.15 W/kg;

Zoom Scan (32.0 mm x 32.0 mm x 30.0 mm): Measurement Grid: 6.0 mm x 6.0 mm x 1.5 mm

Power Drift = -0.05 dB

SAR (1g) = 9.53 W/kg; SAR (10g) = 5.14 W/kg



System Check_Head_2600MHz

DUT: D2600V2 - SN1008

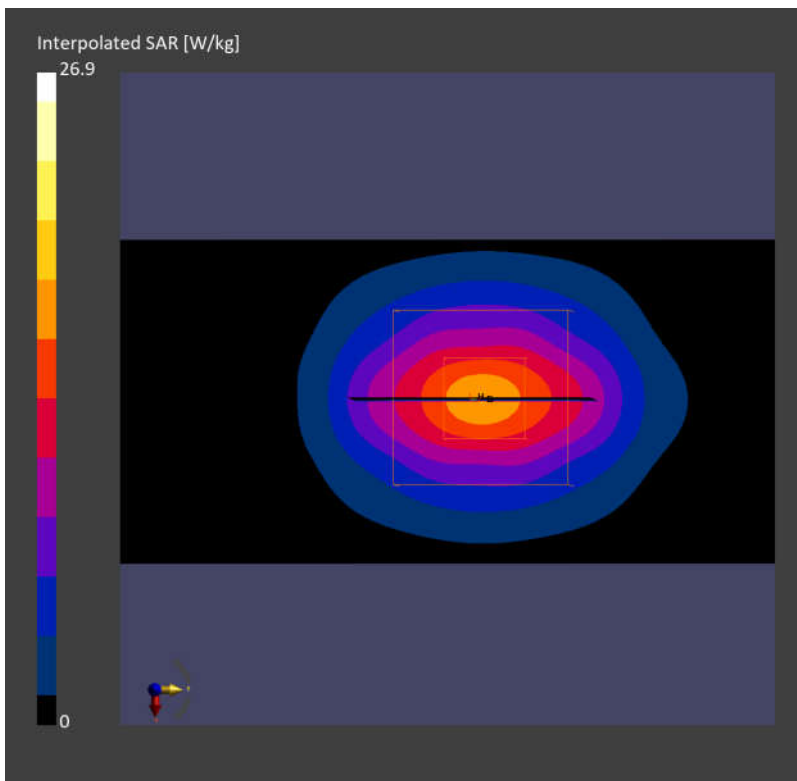
Communication System: CW; Frequency: 2600.000 MHz; Duty Cycle: 1:1
Medium: HSL_2600_230515 Medium parameters used: $f = 2600.000$ MHz; $\sigma = 1.96$ S/m; $\epsilon_r = 38.5$
Ambient Temperature: 23.3°C; Liquid Temperature: 22.3°C

DASY6 Configuration:

- Probe: EX3DV4 - SN3728; ConvF(7.25, 7.25, 7.25); Calibrated: 2023-03-22
- Sensor-Surface: 1.4 mm
- Electronics: DAE4 Sn1424; Calibrated: 2023-01-19
- Phantom: Twin-SAM V4.0 (30deg probe tilt); Serial: 1488; Section: Flat
- Measurement Software: 16.2.4.2448
- UID: , 0--

Area Scan (40.0 mm x 96.0 mm): Measurement Grid: 10.0 mm x 12.0 mm
SAR (1g) = 13.41 W/kg; SAR (10g) = 6.18 W/kg;

Zoom Scan (30.0 mm x 30.0 mm x 30.0 mm): Measurement Grid: 5.0 mm x 5.0 mm x 1.5 mm
Power Drift = -0.12 dB
SAR (1g) = 13.52 W/kg; SAR (10g) = 6.29 W/kg



System Check_Head_3500MHz

DUT: D3500V2 - SN1014

Communication System: CW; Frequency: 3500.000 MHz; Duty Cycle: 1:1
Medium: HSL_3500_230515 Medium parameters used: $f=3500.000$ MHz; $\sigma=2.95$ S/m; $\epsilon_r=37.8$
Ambient Temperature: 23.3°C; Liquid Temperature: 22.3°C

DASY6 Configuration:

- Probe: EX3DV4 - SN3728; ConvF(6.54, 6.54, 6.54); Calibrated: 2023-03-22
- Sensor-Surface: 1.4 mm
- Electronics: DAE4 Sn1424; Calibrated: 2023-01-19
- Phantom: Twin-SAM V4.0 (30deg probe tilt); Serial: 1488; Section: Flat
- Measurement Software: 16.2.4.2448
- UID: , 0--

Area Scan (40.0 mm x 80.0 mm): Measurement Grid: 10.0 mm x 10.0 mm
SAR (1g) = 6.66 W/kg; SAR (10g) = 2.55 W/kg;

Zoom Scan (28.0 mm x 28.0 mm x 28.0 mm): Measurement Grid: 5.0 mm x 5.0 mm x 1.4 mm
Power Drift = -0.01 dB
SAR (1g) = 6.82 W/kg; SAR (10g) = 2.61 W/kg

